

» Overview

Order number: 1002408517
Order completed: 14.04.2026 09:25
Report number: 10415342
VIN: WVGZZZ5N4PM052428



Front Left 3/4



Rear Right 3/4



Mileage



Assessment

- Vehicle Inspection Report -

Number: 10415342
From: 14.04.2026

» Vehicle Data

Vehicle category:	Passenger Car
Vehicle type:	SUV
Make:	Volkswagen
Model:	Tiguan
Manufacturers and type code:	0603 / CLD
Date of first registration:	31.03.2023
Mileage:	82,494 km
Proof of mileage:	ReadOff
Exterior colour:	Platinum Grey Metallic
Roof colour:	Platinum Grey Metallic
Propulsion:	4 Wheel-drive
Fuel:	Diesel
Engine size (cc):	2,000 ccm
Performance:	147 kW (200 PS)
Length:	
Height:	
Width:	
Permitted total weight:	
Wheelbase:	
Number of powered axles:	2
Cylinders:	4
Euronorm:	Euro 6
Number of doors:	4
Number of seats:	5
Gearbox:	Automatic 7-speed
Upholstery type:	Lining semi-leather
Interior colour:	Titanschwarz-Kristallgrau/Titanschwarz/ Schwarz/Titanschwarz
Number of keys:	2

» Documents & Maintenance

Statutory inspection date:	03.2026
Registration certificate available:	No
Registration certificate received:	No
License plate:	None
Maintenance book:	Digital
Maintenance:	Not testable
Maintenance last date:	
Maintenance last mileage:	
Remainder until next maintenance:	6,600 KM



Assessment

- Vehicle Inspection Report -

Number: 10415342
From: 14.04.2026

12 V outlet in center console in rear and in luggage compartment	Carrier frequency 433.92 MHz-434.42 Mhz
2 LED reading lights in front and 2 in rear	Center armrest in front
2 USB-C ports in the front, 1 USB-C charging socket on the center console in the rear	Chrome trims on the side windows
230-V outlet	CO2 variant
30-color ambient lighting	Comfort telephony with LTE and wireless charging
3-point seat belt for center rear seat	Cornering light and poor weather light
3-point seat belts in front with height adjustment and seat belt pretensioners	Dark Red LED rear combination lamps
3-point seat belts with seat belt pretensioners for the outer rear seats	Decorative inserts "Carbon Gray" for dashboard and front door trim panels
4 alloy wheels "Valencia" 8.5J x 19, Volkswagen R	Digital radio reception
4 winter wheels "Auckland" 7J x 19 (addition.), snow tires 235/50 R19 H	Disc brakes in front
4-cylinder diesel engine 2.0 I	Disc brakes in rear
4-cylinder diesel engine 2.0 I TDI, 147 kW	Door and side trim panel in foam film, insert in leatherette
7-speed automatic transmission or dual-clutch transmission DSG for four-wheel drive, note: PR family EDF	Driver alert system
Active climate seats in front	Driver+front passenger airbag with fr. passenger airbag deactivation, incl. knee airbag on driver+fr. passenger side
Adaptive Chassis Control DCC incl. Driving Mode Selection	Driving on the right
Adaptive cruise control (with "follow-to-stop") and speed limiter	Dual-clutch transmission DSG DQ381
Additional luggage compartment light, removable and usable as a flashlight	Dynamic headlight range control with dynamic cornering light
Advanced high-beam control Dynamic Light Assist for LED matrix headlamps	Dynamic steering
Air Care Climatronic 3 zone automatic climate control w/ allergen filter, enhanced air filter a. controls in rear	Easy Open & Close - sensor controlled luggage compartment opening and closing with remote unlocking
AirStop® tires 255/45 R19, low rolling resistance	Easy Open & Close package with SAFELOCK
Alternator 180 A	ECO function
Antenna for FM reception only, diversity	Electromechanical parking brake with Auto Hold function
Anti-theft alarm system with interior monitoring, backup horn and towing protection	Electronic Stability Control w/ driver steering recommendation, ABS, ASR, EDL, EDTC and trailer stabilization
Anti-theft alarm system with SAFELOCK	Elimination of nameplate for engine designation on luggage compartment lid
App-Connect incl. App-Connect Wireless for Apple CarPlay and Android Auto	Elimination of overhead storage compartment
Aspherical exterior mirror on driver side	Emission standard EU6 AP
Automatic headlight control with LED separate daytime running light and exit and entry lighting	Equipment options subset for Germany
Autonomous Emergency Braking Front Assist (for Adaptive Cruise Control ACC up to 210 km/h)	Exterior mirror housings painted in Silver
Battery 380 A (68 Ah)	Exterior mirrors, power-adjustable, folding and heated, with memory feature and surround lighting
Black headliner	First aid kit with warning triangle and safety vest
Black rear spoiler in "R" style	Four-wheel drive 4MOTION
Bracket for first aid kit and warning triangle	Front scuff plates in aluminum, with "R-Line" logo
Breakaway interior rearview mirror, auto-dimming	Front seats with power adjustment, with memory feature; front seat convenience entry function on driver side
Bright roof rails	Front stabilizer bar
Bumpers and sill extension in "R" style, Black wheel housing flaring	Front-end underbody cladding incl. stone guard
Business Premium package incl. navigation system	Fuel system for diesel engine
Carpet mats in front and rear with decorative stitching in Gray	Gearshift knob in leather
	Harman Kardon sound system, 8+1 speakers, 480 W total power output, digital 16-chan. amplifier, subwoofer
	Hatchback



Assessment

Number: 10415342
From: 14.04.2026

- Vehicle Inspection Report -

Head-up display	Parking heater and ventilation with radio remote control and timer
Heated front and outer rear seats	Parking heater and ventilation with radio remote control and timer
Heated washer nozzles in front	Part set without country-specific prescriptive standard
Hill Descent Control	Pedals in brushed stainless steel
Illuminated molding between headlamps	Pedestrian Monitoring
Initial standard fuel filling	Power-adjustable lumbar supports in front
Inserts of front seats and outer rear seats in perforated leather "Vienna", "R-Line" logo in front	Premium comfort seats in front
Instrument cluster, km/h speedometer	Preparation for We Connect and We Connect Plus
IQ.DRIVE assistance systems package incl. semi-automated vehicle assistance in a medical emergency Emergency Assist	Private emergency call system
IQ.LIGHT - LED Matrix headlamps with LED sep. daytime running light, dynamic cornering light and dynamic turn signal	Proactive passenger protection system in combination with Front Assist and Side Assist
ISOFIX anchorage points for mounting of 2 child seats on rear bench seat, also for i-Size child seats	Protective side molding
Keyless locking and starting system Keyless Access with SAFELOCK	Radiator grille
Laminated safety glass windshield, heat- and sound-insulating	Radio
Lane change assist	Rear bench seat asymm. split folding, longitudinally movable and folding with load-through hatch and center armrest
Lane keeping system plus semi-automatic vehicle control in a medical emergency and traffic jam assist	Rear fog lamp
Leather package "Vienna", Volkswagen R, incl. front seats with memory feature	Rear shock absorption
Leather-wrapped multi-function sports steering wheel, heated, with touch control and shifting paddles	Rear stabilizer bar
LED license plate lighting	Refrigerant R1234yf
Left-hand drive	Regional code " ECE " for radio
License plate carrier in front and rear (ECE)	Remote unlocking for rear seat backrest
Light unit in front footwell	Right exterior mirror, convex
LongLife Service Regime	R-line equipment
Luggage compartment cover	Safety-optimized front head restraints, longitudinally and height adjustable
Luggage compartment floor adjustable in 2 heights	Service indicator 30 000 km or 2 years (variable)
Luggage net	Shock absorption in front
Manual in German	Side airbags for outer seats of 2nd row of seats, incl. side airbags in front and curtain airbag system
Mexico manufacturing sequence	Side windows in heat-insulating glass, from B-pillar and rear window dark tinted
Multi-color Digital Cockpit "Pro" selection of different info profiles possible	Space- and weight-saving spare wheel
Multifunction camera	Space- and weight-saving spare wheel
Navigation system "Discover Pro" incl. Streaming & Internet	Special identification label for EC for M1 passenger vehicles
Navigation system "Discover Pro" incl. Streaming & Internet	Standard battery/alternator capacity
Net partition	Standard climatic zones
No special edition	Standard curb weight range
No special purpose vehicle, standard equipment	Standard engine starter
Non-folding front passenger seat backrest	Standard paint coating
Non-smoker's package: Storage compartment and 12-V outlet in front	Standard wheel bolts
Not hot country	Start-stop system with regenerative braking
Online service, with OCU, with head unit coding, without engine immobilizer interconnection	Storage compartment with cover on dashboard
Operating permit, alteration	Styling elements on the power mirror switch, window regulator switches and door pulls
Park Assist with Park Distance Control	Sun visors with mirror, illuminated, with airbag label on sun visor and B-pillar



Assessment

- Vehicle Inspection Report -

Number: 10415342
From: 14.04.2026

Suspension range 06 installation control only, no requirement forecast
Without storage compartment package/box

Textile luggage compartment trim
Without vehicle inlet

Three rear head restraints

Tilting and sliding panoramic sunroof with rear panoramic sunroof

Tire Pressure Monitoring System

Tire Pressure Monitoring System for original equipment tires and winter wheels

Tires without specification of tire brand

Tool kit and jack

Top package

Trailer hitch mechanically swiveling and power-detachable

Trims for alloy wheels

Two-tone horn

Type approval country Germany

Vehicle class differentiation -55N-

Vehicles with special upgrade measures

Voice control

VWD model year change

Warning lamp for washer fluid level

Warning signal and warning lamp for front and rear seat belts not fastened

Weight range 21 installation control only, no requirement forecast

Wheelbase

Windshield wiper intermittent control with light/rain sensor

Winter package, additionally with heated outer rear seats

Winter wheels "Auckland" 7J x 19 (additional), snow tires 235/50 R19 H

With additional transport protection measures

With dynamic road sign display

With front and rear view camera system and two side cameras

Without activated carbon canister with SCR

Without alternative drive system

Without country code (no DVD player in the vehicle)

Without decals and emblems

Without delivery equipment

Without drawers under front seats

Without electronic steering column lock

Without fire extinguisher

Without folding table on front seat backrest

Without garage door opener

Without headlamp washer system

Without heat accumulator/auxiliary heater

Without second battery

Without special body measures



Assessment

- Vehicle Inspection Report -

Number: 10415342
From: 14.04.2026

» Tyres

MOUNTED TYRES

Make	Location	Position	Type	Rim	Dimensions	Profile depth
Pirelli	Front	Left	Winter	Aluminium	235/50 R 19 103 H	4.5 mm
Pirelli	Front	Right	Winter	Aluminium	235/50 R 19 103 H	5.0 mm
Pirelli	Rear	Left	Winter	Aluminium	235/50 R 19 103 H	7.5 mm
Pirelli	Rear	Right	Winter	Aluminium	235/50 R 19 103 H	7.0 mm

Permitted: Yes

Roadworthy: Yes

UNMOUNTED TYRES

Make	Location	Position	Type	Rim	Dimensions	Profile depth
Pirelli			Summer	Aluminium	255/45 R 19 100 V	3.0 mm
Pirelli			Summer	Aluminium	255/45 R 19 100 V	4.0 mm
Pirelli			Summer	Aluminium	255/45 R 19 100 V	4.0 mm
Pirelli			Summer	Aluminium	255/45 R 19 100 V	3.0 mm

Permitted: Yes

Roadworthy: Yes

SPARE/EMERGENCY TYRE & ACCESSORIES

Permitted: Yes

Roadworthy: Yes

Emergency tyre provided: Yes

Toolkit present: Yes

Jack present: Yes



Assessment

- Vehicle Inspection Report -

Number: 10415342
From: 14.04.2026

» Devaluation Factors

Nr	Location	Damage type	Repair type
1	Bumper F	Dent(s) and scratch(es)	Repair and paint (complete)
2	Wing FL	Dent(s)	Repair and paint (complete)
3	Preparationtime bodywork	Paint preparation	Execute
4	Engine	Noise	Diagnosis Damage extension possible
5	Bumper R	Scratch(es)	Repair and paint (partial)
6	MOT certificate	Expired	Renew
7	Wing trim FL	Dent(s)	Replace Safety relevant damage

» Usage Damages

Nr	Location	Damage type	Repair type
1	Boot lid covering R	Scratch(es)	Acceptable
2	Side wall RR	Dent(s)	Acceptable



Assessment

- Vehicle Inspection Report -

Number: 10415342
From: 14.04.2026

» Commercial devaluation

Known previous damages:	No
Previous damages detectable:	Yes
Repainting present:	Yes
Repainting professionally executed:	Yes
Paint thickness measurement performed:	Yes - with abnormalities/deviations

PAINTTHICKNESS MEASUREMENT RESULTS

Part	Paint (µm)
Paint thickness Door RR (µm)	343.0
At least 3 measurements were carried out per component.	



Assessment

- Vehicle Inspection Report -

Number: 10415342
From: 14.04.2026

» Notes On The Assessment

Details of the assignment and the scope of the assessment:

The order was placed to prepare a condition report on the described vehicle.

The vehicle condition assessment was carried out in accordance with the order on the basis of the standards for vehicle assessments specified by the client. The expert makes the findings in the individual case on the basis of his own expertise and at his own expert discretion.

Vehicle identification:

WVGZZZ5N4PM052428

VIN checked and matches documentation

Vehicle condition:

Cleaned

Inspection condition:

Wet, Restricted

Lifting platform/lifting equipment used:

No

Testdrive carried out:

No

Engine test carried out:

Yes



Assessment

- Vehicle Inspection Report -

Number: 10415342
From: 14.04.2026

» Remarks

This copy was generated electronically. It is valid without an original signature.

Additional notes on the condition report:

(14.04.2026 09:02) Fahrzeug weist rundum eine leicht erhöhte Lackschichtdicke auf

» Commercial Pictures



Front Left 3/4



Front Right 3/4



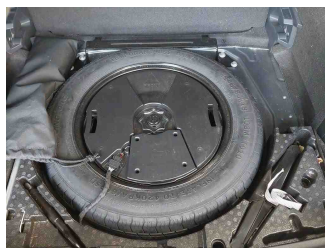
Rear Left 3/4



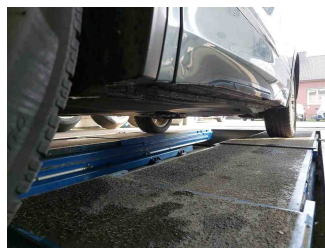
Rear Right 3/4



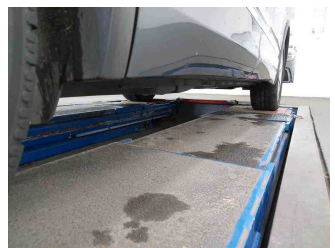
Mileage



Tools



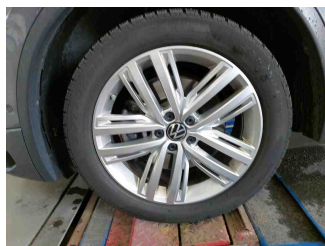
Sill outer L



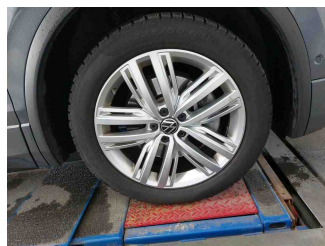
Sill outer R



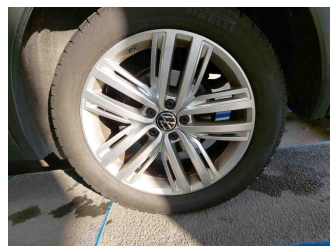
Chassis nr



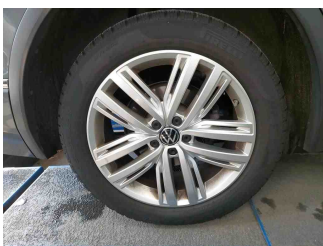
Wheel FL



Wheel FR



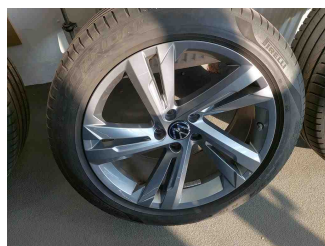
Wheel RL



Wheel RR



Additional wheel 1



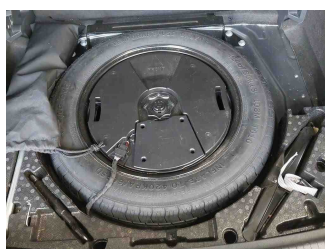
Additional wheel 2



Additional wheel 3



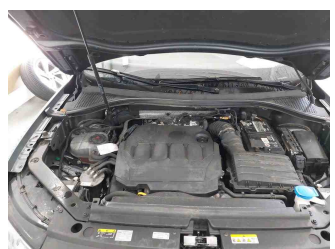
Additional wheel 4



Spare wheel



Central console

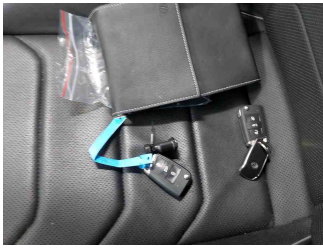


Engine compartment

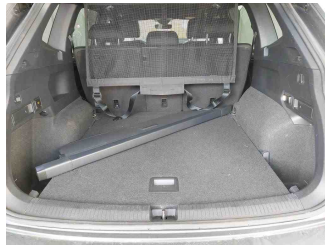
Assessment

- Vehicle Inspection Report -

Number: 10415342
From: 14.04.2026



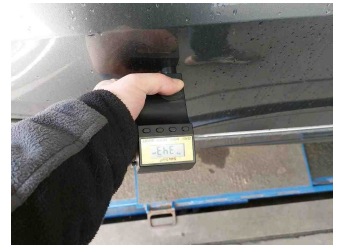
Documents



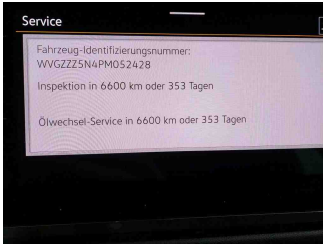
Interior arrangement



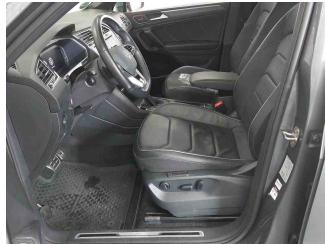
Towbar



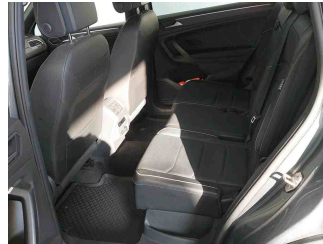
Paint thickness Door RR



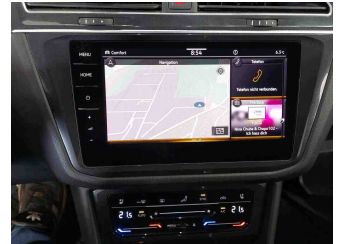
History Maintenance



Interior - front



Interior - rear



GPS/Radio

» Devaluation Damages

DEVALUATION FACTORS

1 - Bumper F - Dent(s) and scratch(es) - Repair and paint (complete)



2 - Wing FL - Dent(s) - Repair and paint (complete)

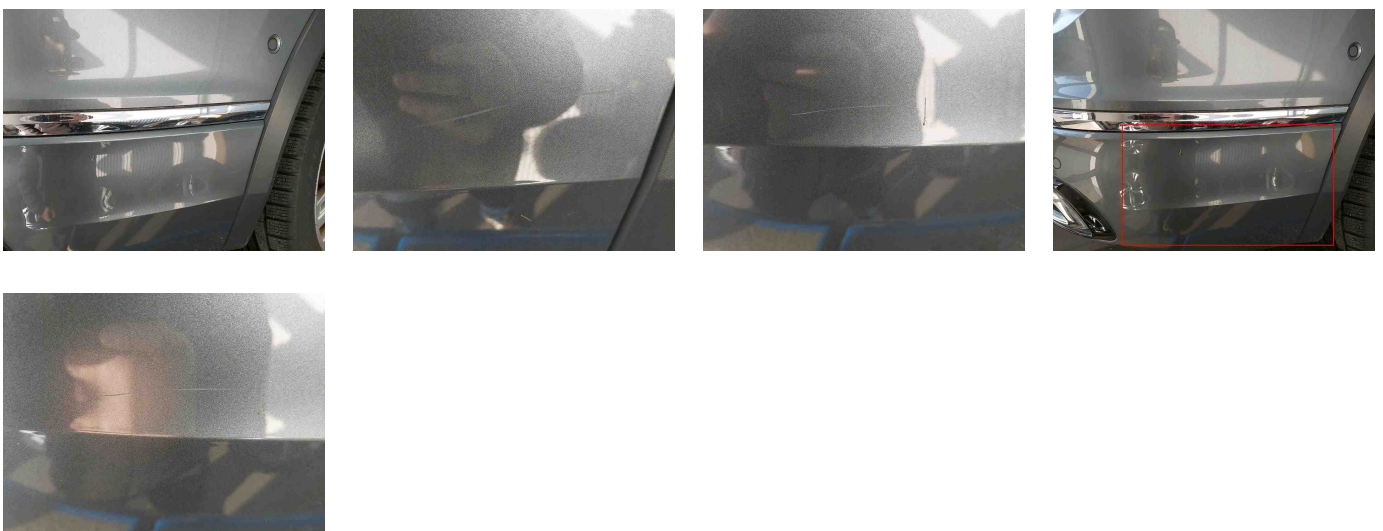


3 - Preparationtime bodywork - Paint preparation - Execute

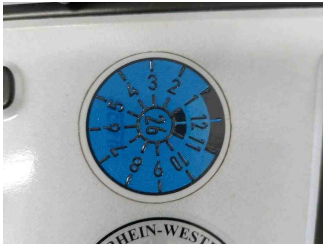
4 - Engine - Noise - Diagnosis
Damage extension possible

Comment	Schleifgeräusche aus Riementrieb
---------	----------------------------------

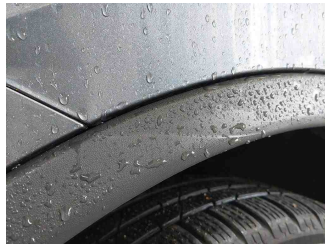
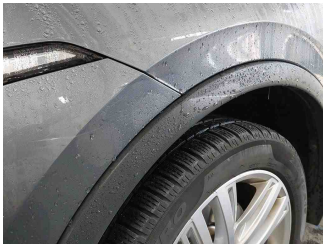
5 - Bumper R - Scratch(es) - Repair and paint (partial)



6 - MOT certificate - Expired - Renew

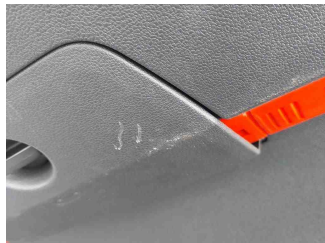
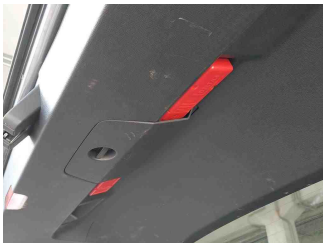


7 - Wing trim FL - Dent(s) - Replace
Safety relevant damage



USAGE DAMAGES

1 - Boot lid covering R - Scratch(es) - Acceptable



2 - Side wall RR - Dent(s) - Acceptable

