

Expertise

Protocol number: 45947108
Order No. / Reference: 26413234
Inspection date: 15 Jun 2026

Manufacturer: Volkswagen

Model: Passat Variant 2.0 TDI SCR DSG Business

VIN: WVVZZZ3CZNE063593



Vehicle details

Manufacturer / Type / Model / Equipment

Volkswagen Passat Variant 2.0 TDI SCR DSG Business

Vehicle Identification number WVVZZZ3CZNE063593

Mileage (Read) 172,847 km

First registration 11 May 2022

Number of holders 2

Next periodical technical inspection 05/2027

(Report not on hand)

Power / Engine displacement 110 kw / 1,968 ccm

Fuel type / Cylinder Diesel / 4

Gearbox / Number of gears Automatic / 7

Type of drive Front drive

Type of vehicle Station wagon

Colour / colour code Mangangrau-metallic

Doors / Seats 5 / 5

Upholstery type Cloth

Colour of upholstery Anthracite-Black

Re-import no

readiness to drive Roadworthy



Vehicle details			
Maintenance booklet / proof	digital proof / complete	Next maintenance in	13,400 km
Last service on / at	02/2025 at 157,588 km		
Key is / should be	3 / 3	FZG documents	ZB#2 (B) was available (copy), ZB#1 (S) was not available.
		Letter No.	GJ130051
Previous damage / Accident	None detectable	Repainting	None detectable
Inspection conditions	sufficient	Lifting equipment / pit	No
Test drive	Not performed	Engine function test	Performed
readiness to drive	Roadworthy		
Manufacturer key number/ type code number	0603 / BQS 02203		
Emission standard	EURO6;WLTP;AP;PI/CI; M, N1 I	fine dust sticker	
Permitted total weight	2,200 kg	Empty weight	

Tyres

Mounted tyres

#	Tyre size	Type of tyre	Manufacturer	Tread depth
1)	215/60 R16 95V	Summer tyres on Light alloy	Dunlop	7mm / 7mm
2)	215/60 R16 95V	Summer tyres on Light alloy	Dunlop	7mm / 7mm

Additional tyres

#	Tyre size	Type of tyre	Manufacturer	Tread depth
1)	215/60 R16 95H	Winter tyres on Light alloy	Dunlop	5mm / 5mm
2)	215/60 R16 95H	Winter tyres on Light alloy	Dunlop	7mm / 7mm

Replacement

Typ	Tyre size	Type of tyre	Manufacturer	Tread depth
E	215/60 R16 95V	Summer tyres on Steel	Continental	6 mm

Legend: Tread depth information for the left tire is listed first, for the right tire it is listed second on the axle in the direction of travel.



Equipment

Standard equipment

- Airbag for driver and front passenger
- Anti-lock braking system (ABS)
- Adaptive Cruise Control (ACC) "stop & go", including speed limiter
- Cup holders (2) front
- third brake light
- Headliner in Mistral Grey
- Diesel particulate filter
- Parking aid - warning signals for obstacles in the front and rear area
- Electronic stability program and electromechanical brake booster
- Windscreen made of laminated safety glass, heat and sound insulating
- Transmission: 7-speed DSG
- ISOFIX mounting points
- Rear headrests (3)
- LED fog lights and cornering lights
- LED headlights with daytime running lights
- Headlight range control
- Front center armrest, height and length adjustable, with storage box
- Mesh partition
- Emergency braking assistant "Front Assist" (for automatic distance control ACC up to 210 km/h)
- Upholstery: "Business" fabric
- Radio "Composition"
- Radio accessories: Digital radio reception DAB+
- Wheels: 4 light alloy wheels "Sepang" 6.5 J x 16
- Rear bench seat, undivided, backrest asymmetrically split and foldable, with center armrest
- Power steering
- Seats: Comfort seats in the front
- Seats: Front seats are height-adjustable
- Start-stop system
- Telephone interface
- First aid kit, warning triangle and high-visibility vest
- Electronic immobilizer
- Airbag, head airbag system for front and rear passengers
- App-Connect
- Electrically adjustable and heated exterior mirrors, ambient lighting
- Hill start assist
- Chrome trim on the side windows
- black roof rails
- Tachometer
- Entry/warning lights in LED technology in the front doors
- Electronic parking brake including auto-hold function
- Automatic headlight control
- Remote release for luggage compartment lid
- Pedestrian detection
- Adjustable luggage compartment floor
- Interior lights with delayed shut-off and dimming function
- Air conditioning
- Front headrests
- LED taillights
- Steering wheel: Multifunction steering wheel in leather, with paddle shifters
- "Premium" multifunction display with multicolor screen
- Fatigue detection
- Non-smoking version
- Emergency call service
- Package: Light and Sight Package "Plus"
- Proactive occupant protection system in conjunction with "Front Assist"
- Tire pressure monitoring system (passive)
- Wheels: Tire Mobility Set
- Gearshift knob in leather
- Keyless start system without safe locking
- Seat belts: Three-point automatic seat belt
- Seats: Lumbar support in the front
- Lane keeping assistant "Lane Assist"
- 12V power outlet on the rear of the center console
- Textile floor mats
- Warning tone and light for unfastened seat belts front and rear



Extra equipment

- Towbar, foldable (with electric release)
- Paint finish: Special metallic paint
- Navigation system "Discover Pro" incl. "Streaming & Internet" (4x20 Watt App-Con. Wireless Digital Cockpit. Operation with proximity sensor. Dual tuner with phase differentiation. DAB. Vehicle menu. Speed. Volume adjustment. Gestures. 32 GB SSD hard drive. Map 2D display. Tone control. 3-way TFT display with touchscreen. MP3. Navigation for Europe. Voice control. Telephone contact. Address. Telephone interface. "Comfort" with inductive charging. 2 USB iPod/iPhone. Traffic sign recognition. "We Connect Plus" incl. "We Connect". Dynamic route guidance. RDS. TMC tuner. Mobile key pre-activation, vehicle via smartphone.)
- Wheels: Spare wheel in driving tire size, steel
- Voice control
- Anti-theft alarm system (interior monitoring, backup horn and tow-away protection - illuminated make-up mirror in the sun visors, extendable sun visors)
- Package: "Business Premium" package incl. navigation (from Business trim level) (2 USB-C ports in the front, 1 USB-C charging port in the rear, 230V socket, App-Connect incl. wireless, Apple CarPlay, Android Auto, "Travel Assist" driver assistance system and "Lane Assist" lane keeping system, Air Care Climatronic with 3-zone temperature control, allergen filter and rear controls, lumbar support in the front, electric on the driver's side, massage function on the driver's side, "Rear View" reversing camera, heated windshield washer nozzles, Comfort telephone interface, inductive charging function, heated front seats)
- Keyless start system with safe locking

Brief expert findings

Documents submitted	At the time of the inspection, the vehicle registration certificate Part 2 (title) was available, but the vehicle registration certificate Part 1 (document) was not. (Copy)
VIN comparison	The vehicle identification number (VIN) was read from the vehicle and its conformity with the submitted documents was confirmed by the undersigned during the inspection.
Inspection	The inspection conditions were sufficient for the assessment of the vehicle. No lifting equipment or pit was available for inspecting the vehicle. Therefore, inspection of the vehicle's underside was only possible to a limited extent.
Test drive	No test drive/shunting maneuver was carried out during the inspection of the vehicle.
Engine function test	An engine test run was performed.
readiness to drive	The vehicle was roadworthy at the time of inspection.

Value reducing factors

No.	Component group	Description
1	Side panel - rear right side	Side panel - Scratch(es) - Smart repair
2	Roof	Roof rail - right side - dent(s) - Smooth repair work
3	Front bumper	Front bumper - Scratch(es) - Paint
4	Roof	Roof - Stone chips - Repair and paint

Wear and tear

No.	Component group	Description
1	Bonnet	Bonnet - Stone chips - No deduction
2	Vehicle glazing	Windscreen - Stone chips - No deduction
3	Interior	Interior - Scratch(es) - No deduction
4	Sill - left side	Sill - Scratch(es) - No deduction
5	Rear bumper	Rear bumper - Scratch(es) - No deduction

The vehicle shows signs of wear and tear commensurate with its age and use.



Order/Scope of Order

An order was placed to prepare a sales report for the described vehicle. This report includes the following:

- Description of key vehicle information
- Documentation of equipment features
(Delivery by third-party service providers)
- Documentation of damage, defects, missing parts
- Documentation of prior damage, unrepaired prior damage, repainting
- A brief visual or functional inspection of the equipment details, if possible.
(Functional testing of driver assistance systems is not included in the scope of services!)
- a photographic documentation of the vehicle

Basis for the order

This product is based on the guidelines for vehicle returns and valuations published by Alphabet Fleet GmbH. The expert makes the specific findings in each individual case objectively, within the framework of the prescribed standards, based on their own expertise.

The vehicle inspection takes place in a fully assembled, unassembled state.

Damage or defects that can only be detected during disassembly/diagnostic work or through further investigation remain within the realm of prognostic risk. An increased risk exists due to concealed defects caused by fraudulent misrepresentation and which were not identifiable by the expert.

Damage or defects resulting from normal use or wear and tear of the vehicle will be accepted in accordance with the applicable standard.

There was no explicit identification or monetary consideration of the expected features within the product.

Features which, in their nature and extent, slightly exceed normal use but do not constitute unacceptable damage, will be documented and indicated as signs of wear, if applicable.

Damage or defects that, according to the applicable standard, can no longer be attributed to normal use or wear and tear are listed under "Value Reducing Factors" in the product description.

Depending on the product specification, a monetary ID can be provided. If this takes place, the costs can be 100% d or pro rata depending on the vehicle's age and mileage.

Previous damages

No apparent prior damage that had been repaired could be found on the vehicle.

Comments

- Die Unterbodenbesichtigung war nur ebenerdig und eingeschränkt möglich - Mehrkosten möglich.



Figure 1: Diagonal front (left)



Figure 2: Diagonal front (right)



Figure 3: Diagonal rear (left)



Figure 4: Diagonal rear (right)



Figure 5: Interior - front



Figure 6: Interior - rear



Figure 7: Instrument cluster



Figure 8: Instrument panel



Figure 9: Interior 360° view



Figure 10: Cargo area

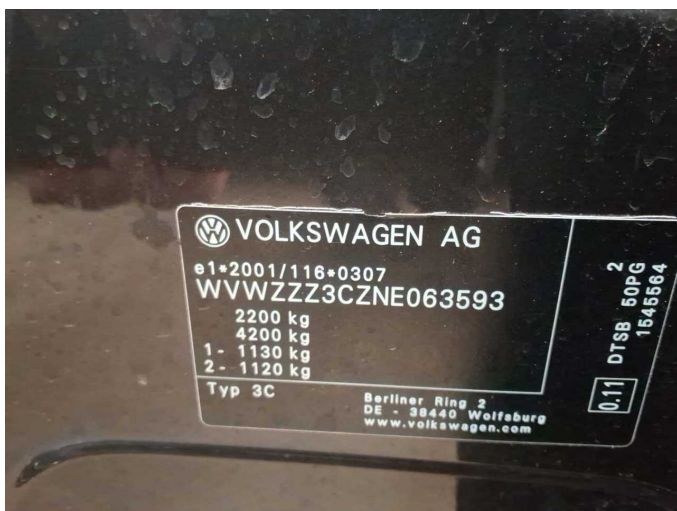


Figure 11: VIN



Figure 12: Mounted tyres



Figure 13: Documents

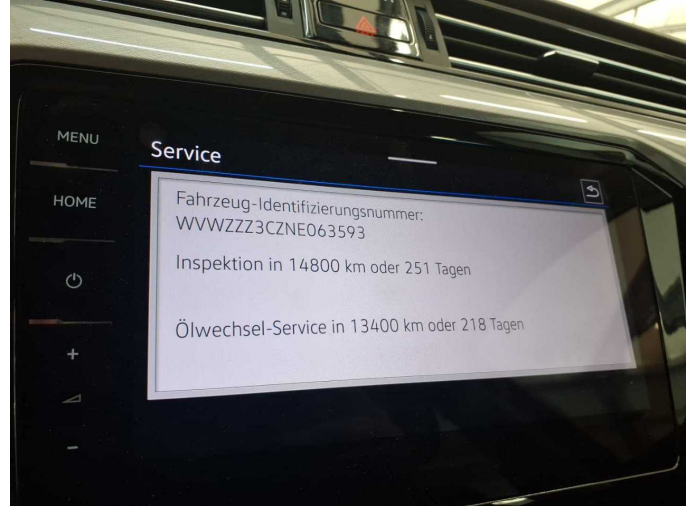


Figure 14: Documents



Figure 15: Documents



Figure 16: Additional tyres



Figure 17: Navigation

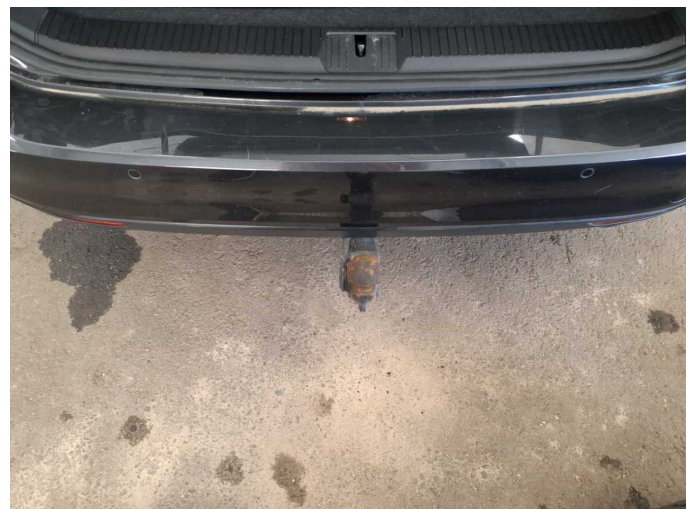


Figure 18: Misc.



Figure 19: Misc.



Figure 20: Misc.



Figure 21: Misc.



Figure 22: Misc.

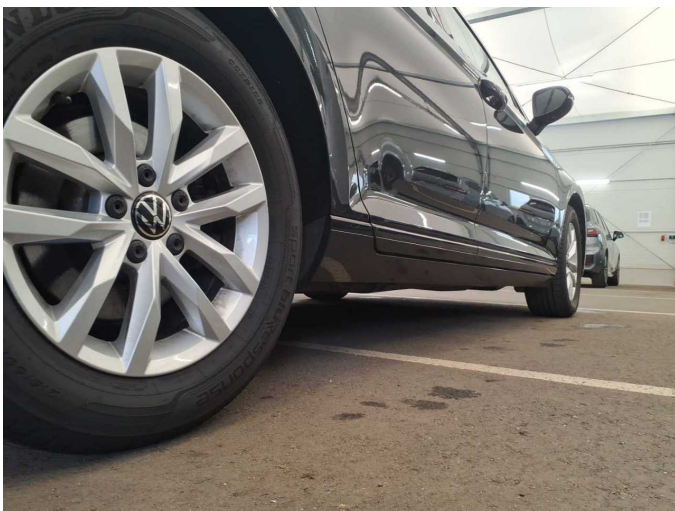


Figure 23: Misc.



Figure 24: Misc.



Figure 25: Misc.



Figure 26: Misc.



Figure 27: Misc.



Figure 28: Misc.

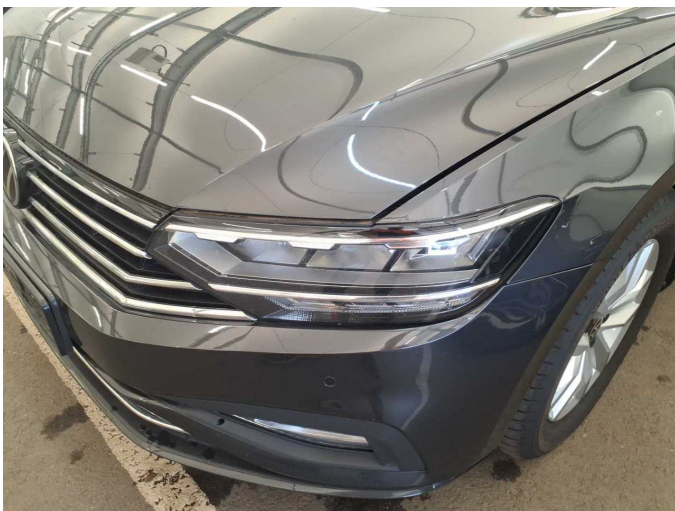


Figure 29: Misc.

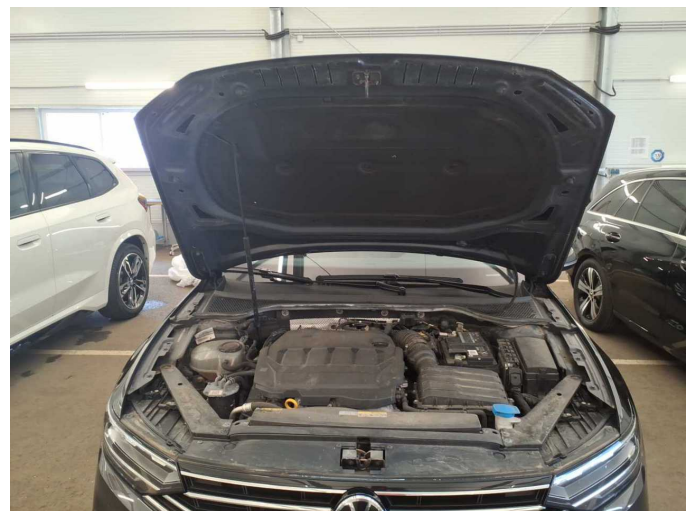


Figure 30: Misc.



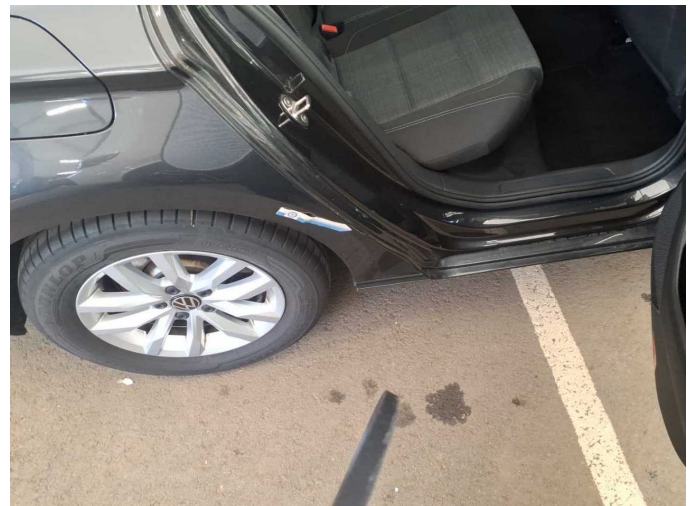
Figure 31: Misc.



Figure 32: Misc.



Damage 1: Side panel - rear right side: Side panel - Scratch(es) - Smart repair



Damage 1: Side panel - rear right side: Side panel - Scratch(es) - Smart repair



Damage 2: Roof: Roof rail - right side - dent(s) - Smooth repair work



Damage 2: Roof: Roof rail - right side - dent(s) - Smooth repair work



Damage 2: Roof: Roof rail - right side - dent(s) - Smooth repair work



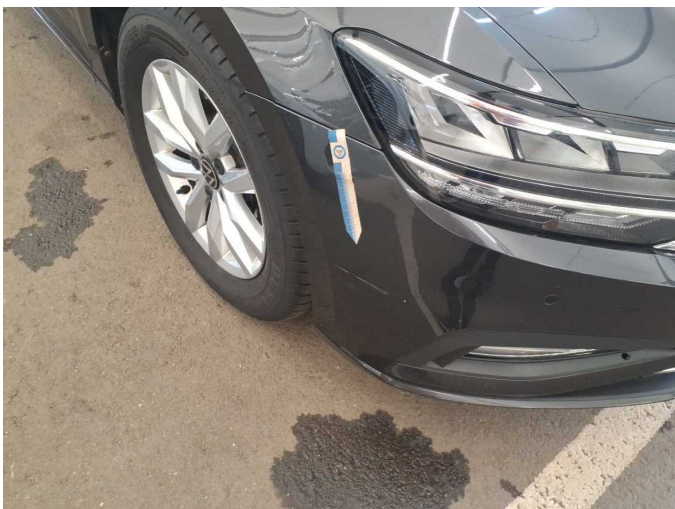
Damage 2: Roof: Roof rail - right side - dent(s) - Smooth repair work



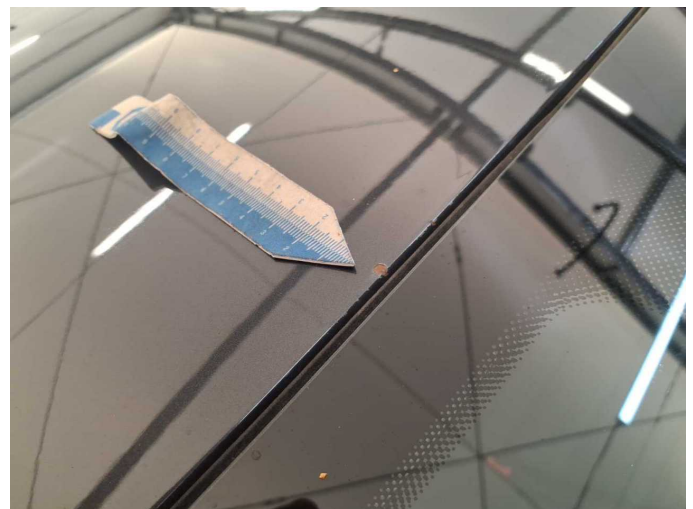
Damage 2: Roof: Roof rail - right side - dent(s) - Smooth repair work



Damage 3: Front bumper: Front bumper - Scratch(es) - Paint



Damage 3: Front bumper: Front bumper - Scratch(es) - Paint



Damage 4: Roof: Roof - Stone chips - Repair and paint



Damage 4: Roof: Roof - Stone chips - Repair and paint



Damage 4: Roof: Roof - Stone chips - Repair and paint



Damage 4: Roof: Roof - Stone chips - Repair and paint



Damage 4: Roof: Roof - Stone chips - Repair and paint



Wartungshistorie

(gemäß Auftraggeber Informationen)

Fahrgestellnummer: WVWZZZ3CZNE063593
Hersteller / Modell: VOLKSWAGEN VOLKSWAGEN Passat Variant 2.0 TDI SCR DSG Business

Datum	KM-Stand	Beschreibung
13.05.2025	167.990	AU
21.02.2025	157.588	Motoröl b. Wartung; Ölfilter ern; Regelwartungsdienst; Systemtest/Eigendiagnose; Wartung Sonstiges
25.11.2024	142.998	Bremse Sonstiges; Bremsklötze hinten; Bremsklötze vorne; Bremsscheiben hinten; Bremsscheiben vorne
05.08.2024	130.880	Bremsflüssigkeit; Bremsflüssigkeit ern; Getriebeöl ern/prüfen; Ladeluftschlauch ern; Luftfiltereinsatz ern; Motoröl b. Wartung; Ölfilter ern; Regelwartungsdienst; Reparatur Sonstiges; Systemtest/Eigendiagnose; Wartung Sonstiges
06.02.2024	99.835	Bremse Sonstiges; Bremsklötze vorne; Bremsscheiben vorne; Kraftstofffilter ern; Luftfiltereinsatz ern; Motoröl b. Wartung; Ölfilter ern; Regelwartungsdienst; Systemtest/Eigendiagnose; Wartung Sonstiges
02.06.2023	61.821	Bremse Sonstiges; Bremsklötze hinten; Bremsklötze vorne; Bremsscheiben + Klötze h; Bremsscheiben + Klötze v; Bremsscheiben hinten; Bremsscheiben vorne; Motoröl b. Wartung; Ölfilter ern; Regelwartungsdienst; Wartung Sonstiges
06.12.2022	30.531	Motoröl b. Wartung; Ölfilter ern; Regelwartungsdienst; Wartung Sonstiges
28.07.2022	11.374	Reparatur Sonstiges; Systemtest/Eigendiagnose