

Expertise

Protocol number: 46111604
Order No. / Reference: 26542619
Inspection date: 23 Jun 2026

Manufacturer: Opel

Model: Combo Cargo 1.5 D EHZ

VIN: W0VEFYHT2NJ542720



Vehicle details

Manufacturer / Type / Model / Equipment

Opel Combo Cargo 1.5 D EHZ

Vehicle Identification number W0VEFYHT2NJ542720

Mileage (Read) 104,223 km

First registration 5 Apr 2022

Number of holders 1

Next periodical technical inspection 08/2026

(Report not on hand)

Power / Engine displacement 75 kw / 1,499 ccm

Fuel type / Cylinder Diesel / 4

Gearbox / Number of gears Manual / 6

Type of drive Front drive

Type of vehicle Van

Colour / colour code Jade Weiß

Doors / Seats 4 / 3

Upholstery type Cloth

Colour of upholstery Grey-Anthracite

Re-import no

readiness to drive Roadworthy



Vehicle details

Maintenance booklet / proof	digital proof / complete	Next maintenance in	30,740 km
Last service on / at	01/2026 at 94,980 km		
Key is / should be	2 / 2	FZG documents	ZB#2 (B) was available (copy), ZB#1 (S) was not available.
		Letter No.	GJ632335
Previous damage / Accident	None detectable	Repainting	None detectable
Inspection conditions	sufficient	Lifting equipment / pit	yes
Test drive	Not performed	Engine function test	With complaint
readiness to drive	Roadworthy		
Manufacturer key number/ type code number	1844 / AIQ 00885		
Emission standard	EURO6;WLTP;AQ;PI/CI; N1 II	fine dust sticker	
Permitted total weight	2,355 kg	Empty weight	

Tyres

Mounted tyres

#	Tyre size	Type of tyre	Manufacturer	Tread depth
1)	205/55 R16 96V	Summer tyres on Steel	Bridgestone	5mm / 5mm
2)	205/55 R16 96V	Summer tyres on Steel	Bridgestone	5mm / 5mm

Legend: Tread depth information for the left tire is listed first, for the right tire it is listed second on the axle in the direction of travel.



Equipment

Standard equipment

- Cover strip for sliding door track - in black
- ABS including brake assist and adaptive brake light
- Airbag, driver and passenger side, as well as side airbags
- Anti-lock braking system (ABS) with cornering brake control and brake assist
- Automatic dipped headlights
- Exterior mirror housings in black
- Hill Start Assist
- On-board computer
- Tachometer
- Three-point seat belts in all seats - Belt force limiter, front - Double belt tensioners, front - Warning tone and light for unfastened seat belts, front
- Speed limiter
- Seat belts: 3-point seat belts in the rear of the 2nd row of seats
- Heating and ventilation system with particle and odor filter, front
- Steering wheel remote control
- Air outlet nozzles in the second row of seats in the floor
- Radio BT Audio: - Bluetooth audio streaming Phone: - Hands-free calling via Bluetooth interface - Display of phonebook and call lists - Up to 5 mobile phones can be paired General: - Use of voice control of the paired smartphone possible (e.g. Siri, Google Assistant) - USB interface - 4 speakers
- Speed-sensitive power steering
- Seats: Driver's seat adjustable in 6 ways: length, height and backrest angle - with lumbar support and armrest
- Seats: Bench seat in the 2nd row with 3 seats - backrest split 60:40, foldable - height-adjustable headrests, rear
- Daytime running light
- Partition grille - longitudinally adjustable behind the 1st or 2nd row of seats - pass-through function via folding down the single passenger seat - protective bag for the load to be attached to the pass-through function
- Immobiliser
- Central locking with remote control

Extra equipment

- Air conditioning, front, with particle and odor filter - recirculation function, manual - glove compartment, split
- Electric windows, front, with one-touch function and anti-pinch protection, as well as comfort closing function via remote control of the central locking system - Electrically adjustable, heated and folding exterior mirrors
- Rear parking pilot

- Storage compartments - Storage compartment in the center console, front - Storage shelf above the windshield, open (not in conjunction with radio removal) - Storage compartment in the front doors, suitable for 1.5-liter beverage bottles - Glove compartment, open - Storage compartment on the dashboard, passenger side, closed
- Battery discharge protection
- Flooring: Plastic floor in the cargo area
- Diesel particulate filter, maintenance-free, including SCR catalytic converter with AdBlue
- Third brake light
- Electronic Stability Program (ESP Plus)
- Electric front windows
- Transmission: 6-speed transmission
- Rear wing doors, asymmetrically split, glazed, 180° opening angle - rear window wiper - rear window heater
- Headrests (2), front, height adjustable
- Paint finish: Solid color paint
- Steering column, adjustable for reach and height
- Upholstery: Cloth
- Wheels: Tire repair kit - with tire sealant and 12-volt compressor (without jack)
- Wheels: Steel wheels 6.5 J x 16 - Tires 205/60 R16 XL 96H - Wheel hub cover
- Side impact protection
- Side protection strips - in black
- Seats: Front passenger seat 4-way adjustable with armrest and foldable - adjustable in length and backrest angle
- Start/Stop System
- 12-volt power outlet in the center console
- Traction control with engine and brake intervention (TC Plus)
- Doors: Sliding door, passenger side with fixed window
- Doors: Sliding door, driver's side with fixed window
- Lashing eyes (6) in the cargo area
- Heat-insulating glazing, tinted
- Central locking: Ignition keys (2), one of which is foldable

- Radio: Multimedia radio with 8" color touchscreen display. Automatic music recognition (title, album, artist, cover art) for audio devices with USB connection. Bluetooth audio streaming. Hands-free calling via Bluetooth interface. Phonebook and call list display. Up to 10 mobile phones can be paired. Display of pictures/movies/videos via USB interface. Smartphone integration via Apple CarPlay and Android Auto. USB interface. Dual tuner. Graphic equalizer. 4 speakers. Cruise control. Steering wheel remote control.



Brief expert findings

Documents submitted	At the time of the inspection, the vehicle registration certificate Part 2 (title) was available, but the vehicle registration certificate Part 1 (document) was not. (Copy)
VIN comparison	The vehicle identification number (VIN) was read from the vehicle and its conformity with the submitted documents was confirmed by the undersigned during the inspection.
Inspection	The inspection conditions were sufficient for the assessment of the vehicle. Lifting equipment and/or a pit were available for examining the vehicle.
Test drive	No test drive/shunting maneuver was carried out during the inspection of the vehicle.
Engine function test	An engine test run was performed, problem has been detected
readiness to drive	The vehicle was roadworthy at the time of inspection.

Value reducing factors

No.	Component group	Description
1	Door - rear right side	Brightware - lower - Scratch(es) - Smart repair
2	Front bumper	Spoiler - Deformed - Loss in value
3	Wing mirror - right side	Cap - Scratched - Smart repair
4	Front bumper	Front bumper - Scratch(es) - Smart repair
5	Boot lid / rear door	Rear door - right side - Deformed - Repair and paint
6	Door - front left side	Door - Deformed - Repair and paint

Wear and tear

No.	Component group	Description
1	Body	Body - Abrasion - No deduction
2	Bonnet	Bonnet - Stone chips - No deduction
3	Rear bumper	Rear bumper (unpainted) - Scratch(es) - No deduction
4	Interior	Interior - Scratch(es) - No deduction

The vehicle shows signs of wear and tear commensurate with its age and use.

Missing parts

Description

Documents - Log book

Equipment - Tirefit complete

Order/Scope of Order

An order was placed to prepare a sales report for the described vehicle. This report includes the following:

- Description of key vehicle information
- Documentation of equipment features
(*Delivery by third-party service providers*)
- Documentation of damage, defects, missing parts
- Documentation of prior damage, unrepaired prior damage, repainting
- A brief visual or functional inspection of the equipment details, if possible.
(*Functional testing of driver assistance systems is not included in the scope of services!*)
- a photographic documentation of the vehicle



Basis for the order

This product is based on the guidelines for vehicle returns and valuations of light commercial vehicles published by Alphabet Fleet Management GmbH. The expert makes the specific findings in each individual case objectively, within the framework of the prescribed standards, based on their own expertise.

The vehicle inspection takes place in a fully assembled, unassembled state.

Damage or defects that can only be detected during disassembly/diagnostic work or through further investigation remain within the realm of prognostic risk. An increased risk exists due to concealed defects caused by fraudulent misrepresentation and which were not identifiable by the expert.

Damage or defects resulting from normal use or wear and tear of the vehicle will be accepted in accordance with the applicable standard.

There was no explicit identification or monetary consideration of the expected features within the product.

Features which, in their nature and extent, slightly exceed normal use but do not constitute unacceptable damage, will be documented and indicated as signs of wear, if applicable.

Damage or defects that, according to the applicable standard, can no longer be attributed to normal use or wear and tear are listed under "Value Reducing Factors" in the product description.

Depending on the product specification, a monetary ID can be provided. If this takes place, the costs can be 100% d or pro rata depending on the vehicle's age and mileage.

Previous damages

No apparent prior damage that had been repaired could be found on the vehicle.



Figure 1: Diagonal front (left)



Figure 2: Diagonal front (right)



Figure 3: Diagonal rear (left)



Figure 4: Diagonal rear (right)

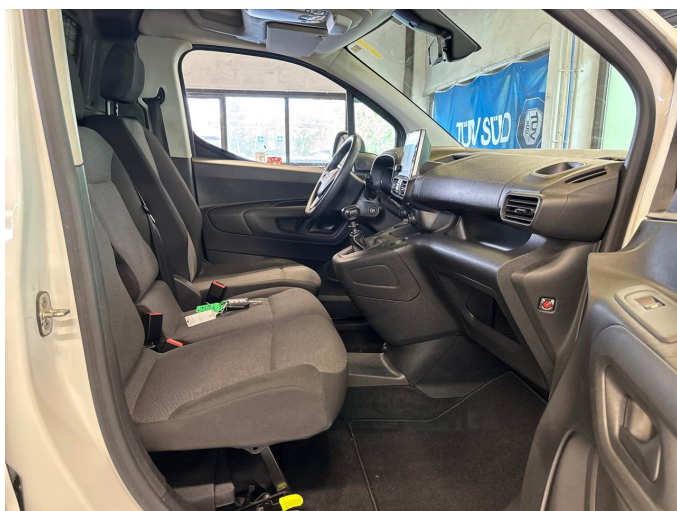


Figure 5: Interior - front



Figure 6: Interior - rear



Figure 7: Instrument cluster



Figure 8: Instrument panel



Figure 9: Interior 360° view



Figure 10: Cargo area



Figure 11: Cargo area

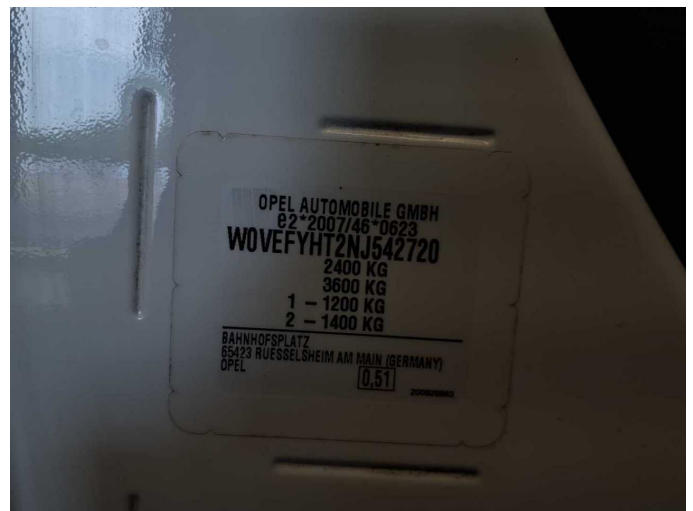


Figure 12: VIN



Figure 13: Mounted tyres



Figure 14: Documents

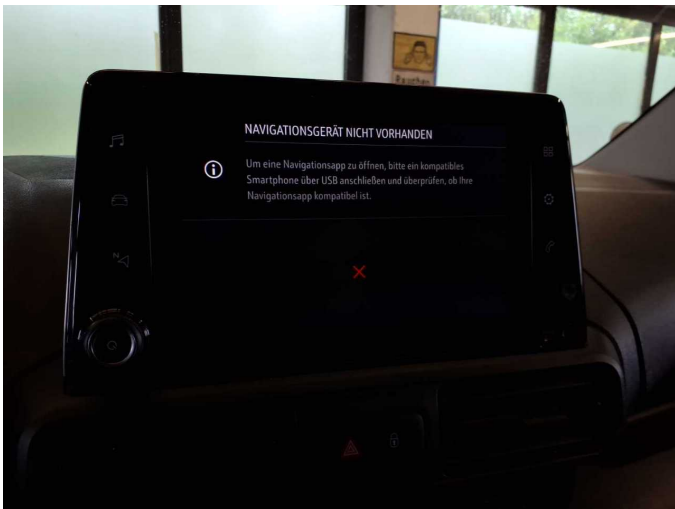


Figure 15: Navigation

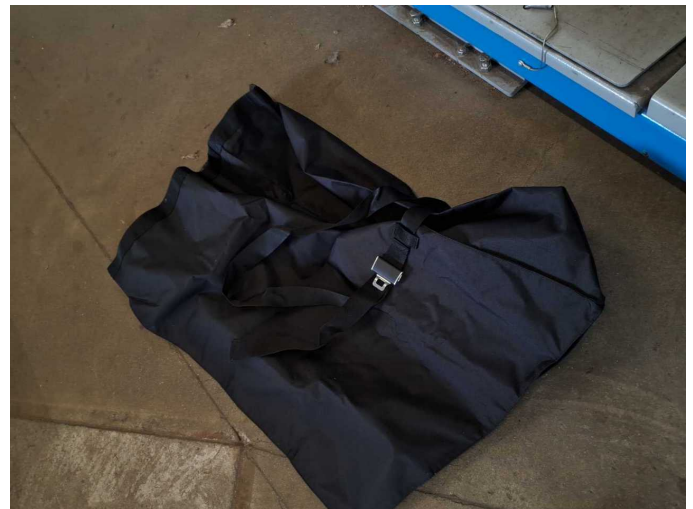


Figure 16: Misc.



Figure 17: Misc.

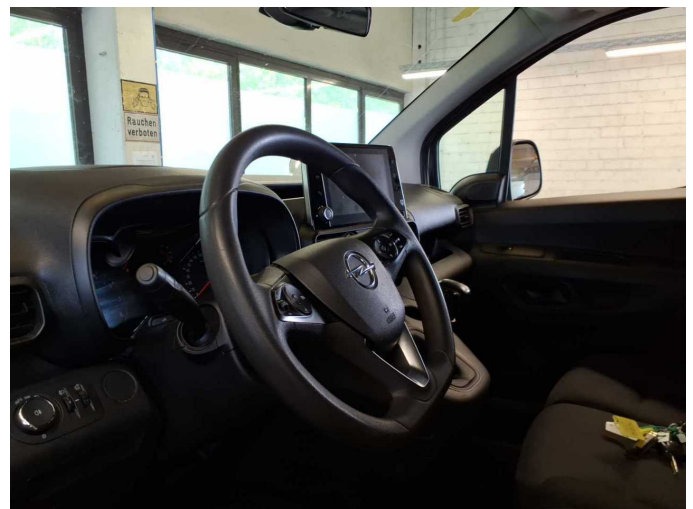


Figure 18: Misc.



Figure 19: Misc.



Figure 20: Misc.



Figure 21: Misc.



Figure 22: Misc.



Figure 23: Misc.



Figure 24: Misc.



Figure 25: Misc.



Figure 26: Misc.



Damage 1: Door - rear right side: Brightware - lower - Scratch(es) - Smart repair



Damage 1: Door - rear right side: Brightware - lower - Scratch(es) - Smart repair



Damage 2: Front bumper: Spoiler - Deformed - Loss in value



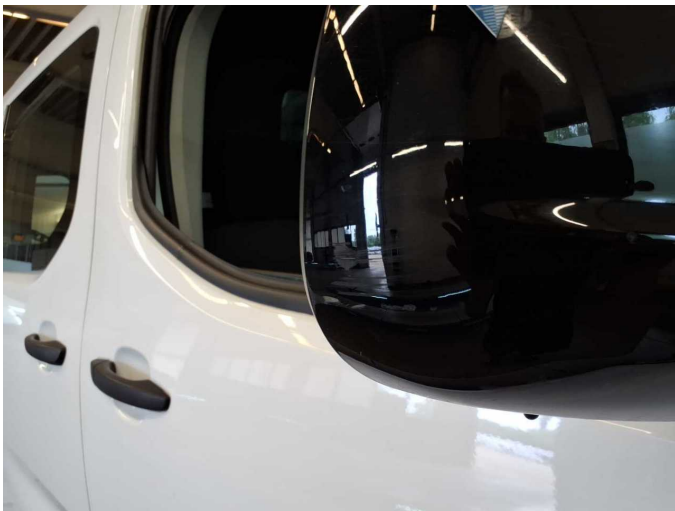
Damage 2: Front bumper: Spoiler - Deformed - Loss in value



Damage 2: Front bumper: Spoiler - Deformed - Loss in value



Damage 3: Wing mirror - right side: Cap - Scratched - Smart repair



Damage 3: Wing mirror - right side: Cap - Scratched - Smart repair



Damage 4: Front bumper: Front bumper - Scratch(es) - Smart repair



Damage 4: Front bumper: Front bumper - Scratch(es) - Smart repair



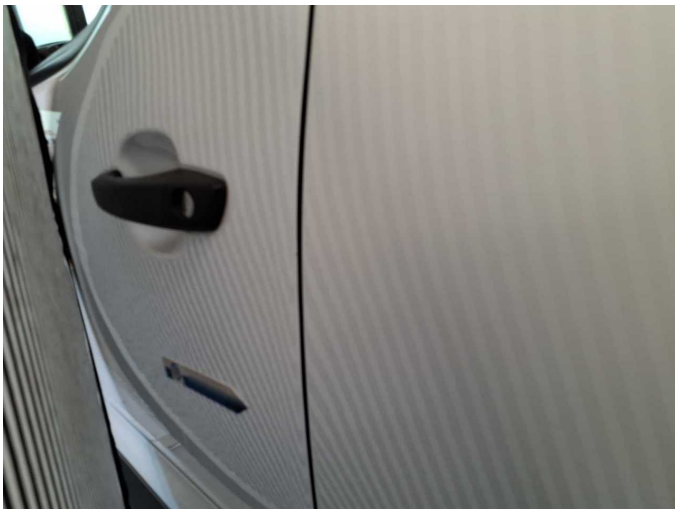
Damage 5: Boot lid / rear door: Rear door - right side - Deformed - Repair and paint



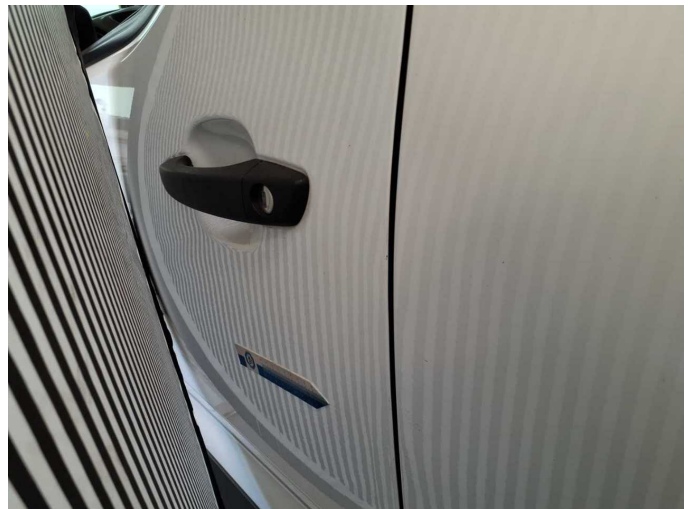
Damage 5: Boot lid / rear door: Rear door - right side - Deformed - Repair and paint



Damage 6: Door - front left side: Door - Deformed - Repair and paint



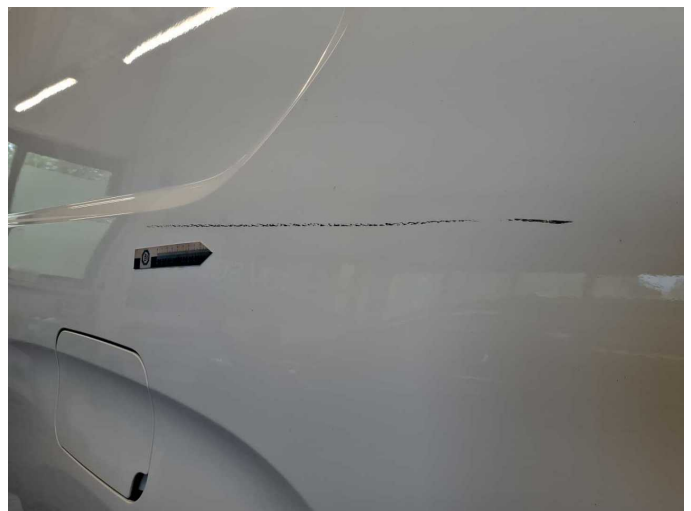
Damage 6: Door - front left side: Door - Deformed - Repair and paint



Damage 6: Door - front left side: Door - Deformed - Repair and paint



Wear and tear 1: Body: Body - Abrasion - No deduction



Wear and tear 1: Body: Body - Abrasion - No deduction



Wear and tear 2: Bonnet: Bonnet - Stone chips - No deduction



Wear and tear 2: Bonnet: Bonnet - Stone chips - No deduction



Wear and tear 3: Rear bumper: Rear bumper (unpainted) - Scratch(es) - No deduction



Wear and tear 3: Rear bumper: Rear bumper (unpainted) - Scratch(es) - No deduction



Wear and tear 3: Rear bumper: Rear bumper (unpainted) - Scratch(es) - No deduction



Wartungshistorie

(gemäß Auftraggeber Informationen)

Fahrgestellnummer: W0VEFYHT2NJ542720

Hersteller / Modell: OPEL OPEL Combo Cargo XL 1.5 D EHZ Edition

Datum	KM-Stand	Beschreibung
23.01.2026	94.980	Kraftstofffilter ern; Luftfiltereinsatz ern; Motoröl b. Wartung; Ölfilter ern; Regelwartungsdienst; Wartung Sonstiges
27.08.2024	51.980	Bremsflüssigkeit; Bremsflüssigkeit ern; Bremsklötze hinten; Bremsklötze vorne; Bremsscheiben + Klötze h; Bremsscheiben + Klötze v; Bremsscheiben hinten; Bremsscheiben vorne; Kraftstofffilter ern; Luftfiltereinsatz ern; Motoröl b. Wartung; Ölfilter ern; Regelwartungsdienst; Wartung Sonstiges; Wartung Sonstiges
16.08.2024	51.980	HU + AU