

Expertise

Protocol number: 46233713
Order No. / Reference: 26562194
Inspection date: 29 Jun 2026

Manufacturer: Ford

Model: S-Max 2.5 Duratec FHEV TITANIUM

VIN: WF0JXXWPCHPD51308



Vehicle details

Manufacturer / Type / Model / Equipment

Ford S-Max 2.5 Duratec FHEV TITANIUM

Vehicle Identification number WF0JXXWPCHPD51308

Mileage (Read) 59,700 km

First registration 4 May 2023

Number of holders 1

Power / Engine displacement 110 kw / 2,488 ccm

Fuel type / Cylinder Hybrid Petrol / E / 4

Gearbox / Number of gears Automatic / 1

Type of drive Front drive

Type of vehicle Van

Colour / colour code Moondust Silver Metallic

Doors / Seats 5 / 5

Upholstery type Cloth

Colour of upholstery Black

TÜV SÜD Auto Partner GmbH
Wiesenring 2
04159 Leipzig

Inspection location
Hartmann Fleet Professionals GmbH
Leerenstraße 25
29683 Bad Fallingbommel



Equipment



Standard equipment

- Ambient lighting in the front (including door storage, front door handle and footwell lighting)
- Exterior mirrors in body color, driver and passenger side, electrically adjustable and heated (with integrated turn signals and ambient lighting and electrically foldable)
- Attachment points for safety partition grilles (attachment points 2nd row of seats)
- Hill start assist
- Overhead console with glasses storage compartment and child observation mirror
- Lane Assist including Lane Keeping Assist and Driver Alert (warns the driver of an unintentional lane change via short steering wheel vibrations (without activation of the turn signal) - additionally, active steering support assists in returning to the lane)
- Ford EasyFold: 2nd row seat backrests fold down electrically at the touch of a button.
- Ford Power Start function with Ford Key Free system (keyless starting and locking/unlocking)
- FordPass Connect including eCall and Wi-Fi hotspot (information about the current status or location of the vehicle as well as control of selected vehicle functions via smartphone with the FordPass app - eCall emergency call system to send an emergency call in the event of an accident or when manually activated - Wi-Fi hotspot (up to 4G/LTE7, for up to 10 mobile devices))
- Interior mirror, automatically dimming
- Isofix mounting (on all seats in the 2nd row)
- Electric child safety lock
- Air conditioning with automatic temperature control (separately adjustable for driver and passenger side (2-zone automatic climate control))
- Rear headrests (3)
- Front headrests, 4-way height and tilt adjustable
- Steering wheel: Multifunction leather steering wheel
- Front and rear reading lights (with LED technology)
- MyKey key system (individually programmable second key) (setting options include: - Limiting the maximum speed and radio volume (to max. volume 15 out of 32) - Speed warning (when the set speed limit is exceeded) - Safety assistance systems cannot be deactivated - Extended warning system for unfastened seat belts)
- Fog lights with LED technology
- Emergency brake light (pulsating illumination of the brake lights during hard braking)
- Package: Winter (Heated windscreen - Heated leather steering wheel - Individually and variably heated front seats)
- Radio: Ford SYNC 3 (AppLink (Android Auto and Apple CarPlay) - 8" touchscreen (20.3 cm screen diagonal) - Digital radio reception DAB/DAB+ (Digital Audio Broadcasting) - 8 speakers - Steering wheel controls - Bluetooth hands-free system and audio streaming - 2 USB ports - Voice control for audio and phone - SMS text-to-speech function)
- Anti-lock braking system (ABS) (with Electronic Stability Program (ESP), Roll Stability Control (RSC) and Traction Control System (TCS))
- Attachment points for safety partition grilles (attachment points 1st row of seats)
- Tires: 7.5 J x 17 alloy wheels (4) with 235/55 R 17 tires (in 5x2-spoke design)
- third brake light
- Roof rails "aluminum look"
- Tachometer
- Electric front and rear windows (with anti-pinch protection and automatic opening and closing function)
- High Beam Assist
- Electronic parking brake
- Ford Easy Fuel (The Ford Easy Fuel convenience refueling system eliminates the need for a separate internal fuel filler cap and prevents misfueling by detecting the size difference between petrol and diesel nozzles. The filler neck only opens when the correct fuel is used.)
- Luggage compartment cover (removable)
- Luggage compartment lighting
- Cruise control system with intelligent speed limiter
- Transmission: CVT automatic
- Back window, heater
- rear window wiper
- Interior lighting with delay circuit
- Intelligent Protection System (IPS) (front airbag for driver and front passenger - knee airbag for driver - head and shoulder airbags in the front and for the 2nd row of seats - side airbags for driver and front passenger - side airbags on the outer seats of the 2nd row of seats - seat belt tensioners and belt force limiters in the front - 3-point seat belts in all seats, height-adjustable in the front)
- Steering wheel: Steering column, adjustable in height and reach
- Front center console with padded armrest (storage compartment and 2 cup holders)
- Ford navigation system including Ford SYNC 3 (AppLink (Android Auto and Apple CarPlay) - Touchscreen - Digital radio reception DAB/DAB+ (Digital Audio Broadcasting) - Acoustic and visual route guidance, dynamic navigation, lane guidance, road map for Europe - FordPass Connect additionally with live traffic information - Enhanced voice control - Enhanced voice output - Michelin travel guide for Europe - Quick destination search of addresses and points of interest in one input field (One Box Search))
- Front and rear parking pilot system
- Upholstery: Cloth
- Tire repair kit (for use at a maximum speed of 80 km/h)
- Tire Pressure Monitoring System (TPMS)
- LED taillights
- Windscreen wipers with rain sensor
- Headlight dipped beam with switch-off delay including "greeting function"



- Side skirts and bumpers painted in body color
- Seats: 2nd row of seats with 3 individual seats (FoldFlat System)
- Seats: Front sports seats (with enhanced lateral support)
- Seats: Front seats can be heated individually and variably.
- Power outlet: 12-volt connection in the luggage compartment and in the center console
- Premium carpet floor mats front and rear (as well as in the 3rd row of seats if ordered as an optional extra)
- Warning system for unfastened seat belts for the 1st and 2nd rows of seats (as well as the 3rd row of seats if ordered as an optional extra)
- Cigarette lighter (and ashtray in the center console)

- Headlight assistant with day/night sensor
- Electro-mechanical power steering (EPAS - Electric Power Assisted Steering)
- Seats: Driver and front passenger seats, 4-way manually adjustable (with manually adjustable lumbar support)
- 230 volt socket
- Trays on the front seatbacks
- LED daytime running lights
- Traffic sign recognition system
- Lashing eyes in the luggage compartment
- Immobiliser
- Central locking with remote control (remote luggage compartment release - second folding vehicle key)

Extra equipment

- Package: Business Package I (Ford navigation system including Ford SYNC 3 with AppLink, touchscreen, DAB/DAB+, audible and visual route guidance, live traffic in conjunction with FordPass, enhanced voice control and voice output, Michelin travel guide, quick destination search for addresses and points of interest in a single input field - LED daytime running lights integrated into the headlights - Park Assist with automatic parking sensors - Pre-Collision Assist (distance display and distance warning, collision warning system and active emergency braking assist) - Rearview camera)

- Detachable towbar (including ESP trailer stabilization)
- Paint finish: Metallic

Brief expert findings

| | |
|----------------------|-----------------------------------------------------------------------------------------------------------------------------------------------------------------------------------------------------------------------------------------------|
| Documents submitted | At the time of the inspection, the vehicle registration certificate Part 2 (title) was available, but the vehicle registration certificate Part 1 (document) was not. (Copy) |
| VIN comparison | The vehicle identification number (VIN) was read from the vehicle and its conformity with the submitted documents was confirmed by the undersigned during the inspection. |
| Inspection | The inspection conditions were sufficient for the assessment of the vehicle. No lifting equipment or pit was available for inspecting the vehicle. Therefore, inspection of the vehicle's underside was only possible to a limited extent. |
| Test drive | No test drive/shunting maneuver was carried out during the inspection of the vehicle. |
| Engine function test | An engine test run was performed. |

Value reducing factors

| No. | Component group | Description |
|-----|-------------------------|------------------------------------------|
| 1 | Door - rear left side | Door - dent(s) - Smooth repair work |
| 2 | Roof | Roof - dent(s) - Smooth repair work |
| 3 | Rear bumper | Rear bumper - Scratch(es) - Smart repair |
| 4 | Door - front right side | Door - Scratch(es) - Smart repair |
| 5 | Bonnet | Bonnet - dent(s) - Smart repair |

Wear and tear

| No. | Component group | Description |
|-----|------------------------------|-----------------------------------------------|
| 1 | Side panel - rear right side | Sill - Dent / paintcoat damage - No deduction |
| 2 | Front bumper | Front bumper - Stone chips - No deduction |

The vehicle shows signs of wear and tear commensurate with its age and use.



Order/Scope of Order

An order was placed to prepare a sales report for the described vehicle. This report includes the following:

- Description of key vehicle information
- Documentation of equipment features
(Delivery by third-party service providers)
- Documentation of damage, defects, missing parts
- Documentation of prior damage, unrepaired prior damage, repainting
- A brief visual or functional inspection of the equipment details, if possible.
(Functional testing of driver assistance systems is not included in the scope of services!)
- a photographic documentation of the vehicle

Basis for the order

This product is based on the guidelines for vehicle returns and valuations published by Alphabet Fleet GmbH. The expert makes the specific findings in each individual case objectively, within the framework of the prescribed standards, based on their own expertise.

The vehicle inspection takes place in a fully assembled, unassembled state.

Damage or defects that can only be detected during disassembly/diagnostic work or through further investigation remain within the realm of prognostic risk. An increased risk exists due to concealed defects caused by fraudulent misrepresentation and which were not identifiable by the expert.

Damage or defects resulting from normal use or wear and tear of the vehicle will be accepted in accordance with the applicable standard.

There was no explicit identification or monetary consideration of the expected features within the product.

Features which, in their nature and extent, slightly exceed normal use but do not constitute unacceptable damage, will be documented and indicated as signs of wear, if applicable.

Damage or defects that, according to the applicable standard, can no longer be attributed to normal use or wear and tear are listed under "Value Reducing Factors" in the product description.

Depending on the product specification, a monetary ID can be provided. If this takes place, the costs can be 100% or pro rata depending on the vehicle's age and mileage.

Previous damages

No apparent prior damage that had been repaired could be found on the vehicle.

Comments

- Winterradsatz ist kein Bestandteil des Auslieferungsumfanges.



Figure 1: Diagonal front (left)



Figure 2: Diagonal front (right)



Figure 3: Diagonal rear (left)



Figure 4: Diagonal rear (right)

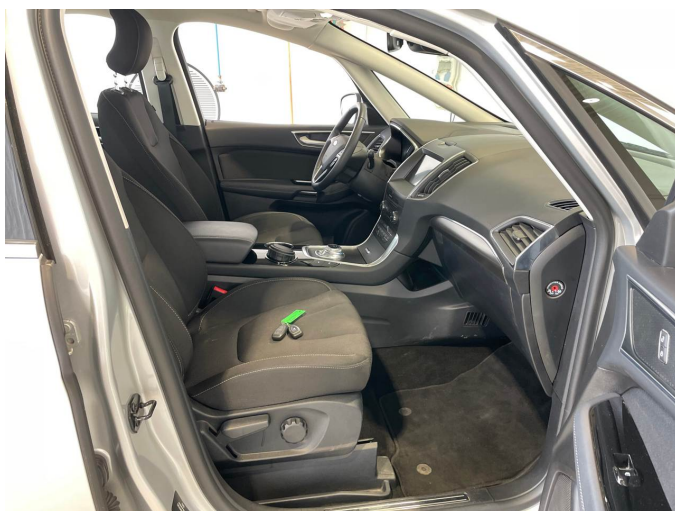


Figure 5: Interior - front

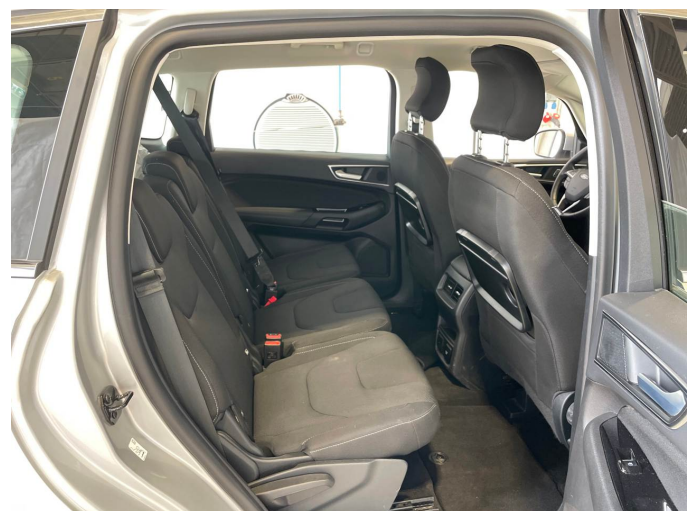


Figure 6: Interior - rear



Figure 7: Instrument cluster



Figure 8: Instrument panel



Figure 9: Interior 360° view



Figure 10: Cargo area



Figure 11: VIN

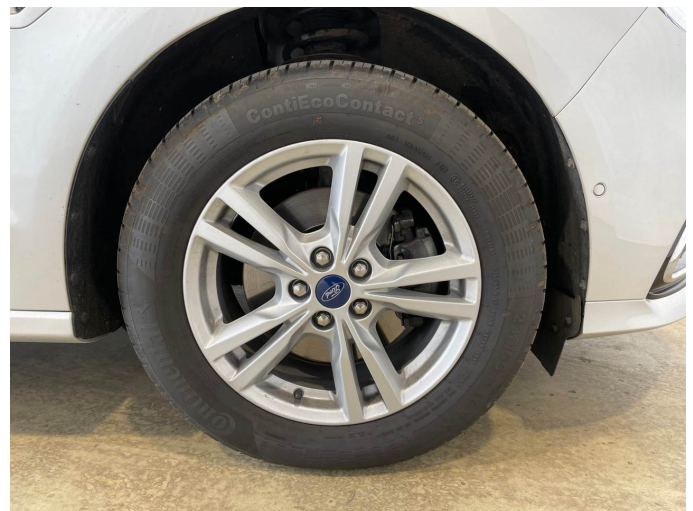


Figure 12: Mounted tyres



Figure 13: Documents



Figure 14: Additional tyres



Figure 15: Additional tyres



Figure 16: Additional tyres

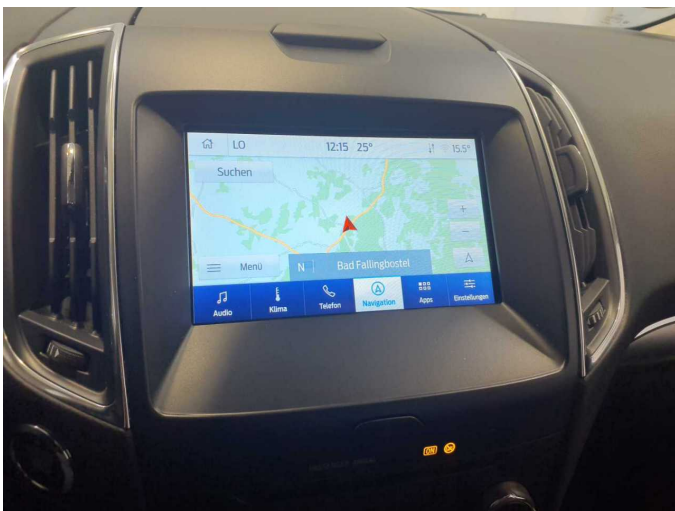


Figure 17: Navigation



Figure 18: Misc.



Figure 19: Misc.



Figure 20: Misc.

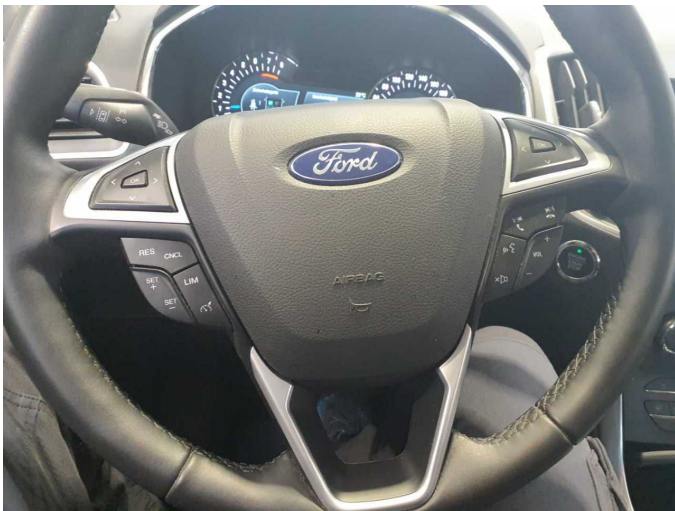


Figure 21: Misc.



Figure 22: Misc.

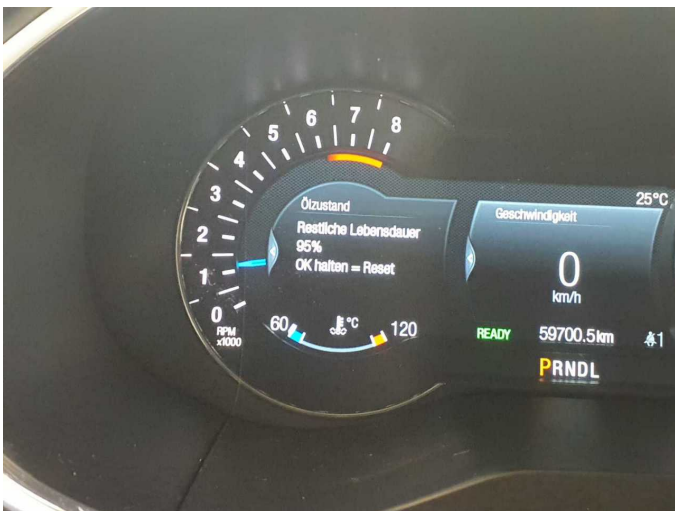


Figure 23: Misc.

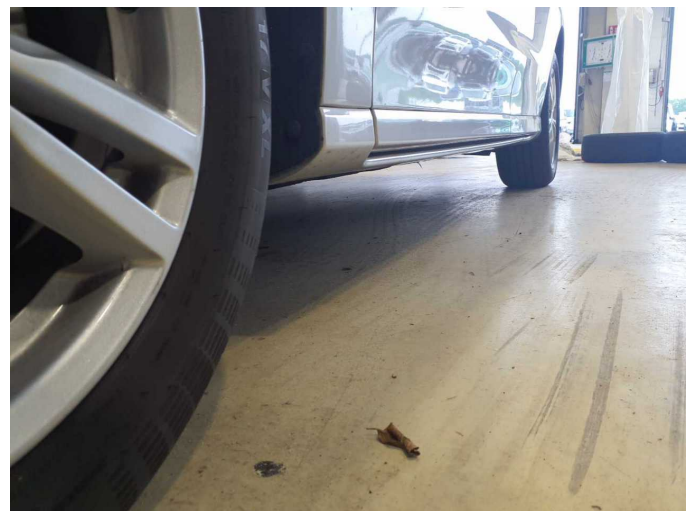


Figure 24: Misc.



Figure 25: Misc.



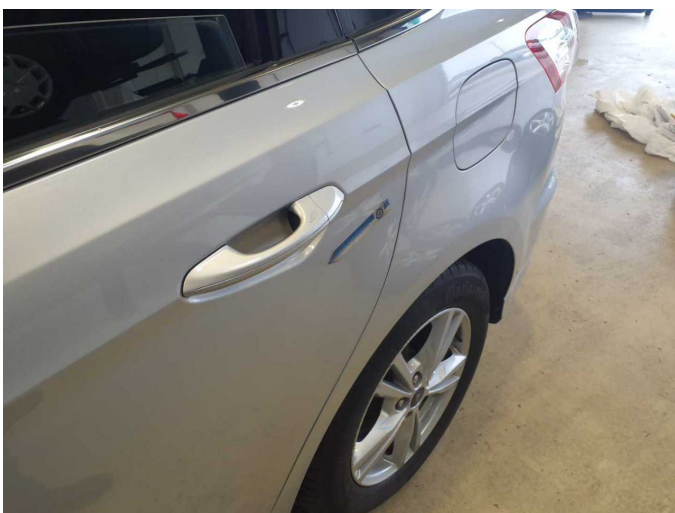
Figure 26: Misc.



Figure 27: Misc.



Figure 28: Misc.



Damage 1: Door - rear left side: Door - dent(s) - Smooth repair work



Damage 1: Door - rear left side: Door - dent(s) - Smooth repair work



Damage 2: Roof: Roof - dent(s) - Smooth repair work



Damage 2: Roof: Roof - dent(s) - Smooth repair work



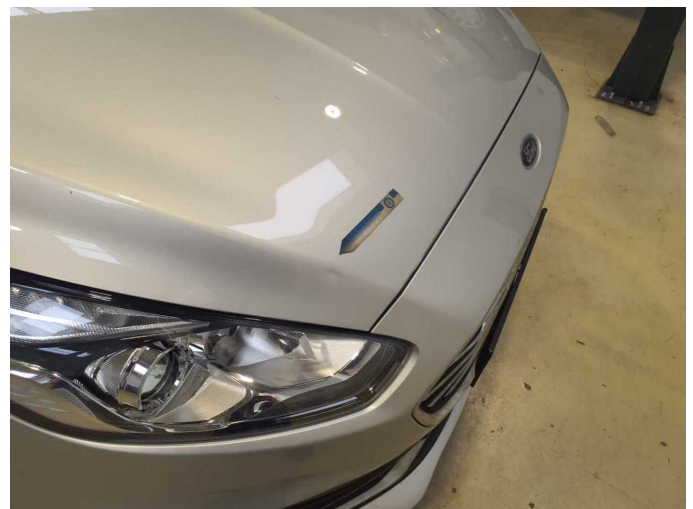
Damage 3: Rear bumper: Rear bumper - Scratch(es) - Smart repair



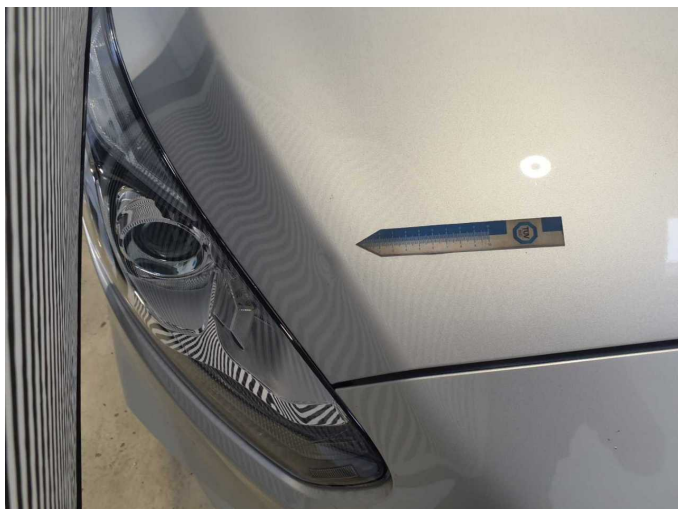
Damage 3: Rear bumper: Rear bumper - Scratch(es) - Smart repair



Damage 4: Door - front right side: Door - Scratch(es) - Smart repair



Damage 5: Bonnet: Bonnet - dent(s) - Smart repair



Damage 5: Bonnet: Bonnet - dent(s) - Smart repair