

## Expertise

Protocol number: 46292222  
Order No. / Reference: MW3031479  
Inspection date: 1 Jul 2026

Manufacturer: Mercedes-Benz

Model: GLE 350 de 4Matic 9G-TRONIC AMG Line

VIN: W1N1671171A456112



### Vehicle details

#### Manufacturer / Type / Model / Equipment

Mercedes-Benz GLE 350 de 4Matic 9G-TRONIC AMG Line

<b>Vehicle Identification number</b>	W1N1671171A456112
<b>Mileage (Read)</b>	181,199 km
<b>First registration</b>	28 May 2021
<b>Number of holders</b>	2
<b>Next periodical technical inspection</b> (Report on hand)	06/2026

<b>Power / Engine displacement</b>	143 kw / 1,950 ccm
<b>Fuel type / Cylinder</b>	Hybr.D/E ext.auf1 / 4
<b>Gearbox / Number of gears</b>	Automatic / 9
<b>Type of drive</b>	All-wheel drive
<b>Type of vehicle</b>	SUV

<b>Colour / colour code</b>	Iridiumsilber Metallic
<b>Doors / Seats</b>	5 / 5
<b>Upholstery type</b>	Alcantara / Leather
<b>Colour of upholstery</b>	Black-Anthracite

<b>Re-import</b>	no
<b>readiness to drive</b>	Not roadworthy / moveable





## Equipment

### Standard equipment

- Exhaust system with 2 chrome-plated tailpipe trims
- Adaptive Highbeam Assist
- Airbag: Driver and passenger side
- Airbag: Sidebag for driver and front passenger (combined thorax/pelvisbag)
- Active Lane Keeping Assist
- 4MATIC permanent all-wheel drive
- AMG sports pedal assembly made of brushed stainless steel with black rubber studs
- Foldable armrest for driver and front passenger
- ATTENTION ASSIST
- Electrically adjustable and heated exterior mirrors
- Roof rails in aluminum look
- Downhill Speed Regulation (DSR)
- Third brake light
- EASY-Pack cargo cover (removable)
- ECO start/stop function
- Electronic Stability Program
- Electronic traction system for all-wheel drive (4ETS)
- electric parking brake
- Transmission: 9G-TRONIC
- Rear window heated
- Rear window wiper with intermittent function
- KEYLESS-GO start function
- Climate: THERMATIC automatic climate control
- Headrests 5-way
- Radiator grille with 2 chrome-plated louvers in SUV design
- Charging system: AC on-board charger 7.4 kW
- Mercedes-Benz emergency call system
- Navigation accessories: Extended MBUX functions
- Navigation: Hard disk navigation
- Package: Chrome
- Package: Mirror Package
- PRE-SAFE system
- Radio accessories: Additional USB ports
- Remote Services Plus
- Power steering
- Seats: Heated seats for driver and front passenger seats
- Seats: Sports seats for driver and front passenger with specific seat graphics
- High-visibility vest for drivers
- Widescreen Cockpit
- Decorative elements: Brushed aluminum with light longitudinal grain
- ADAPTIVE BRAKE
- Adaptive brake light
- Airbag: Kneebag for driver
- Airbag: Windowbags
- Active Brake Assist
- Acoustic environmental protection
- Ambient lighting
- Anti-lock braking system
- Traction control (ASR)
- Rear armrest
- Automatic passenger airbag deactivation
- Brake Assist BAS
- Diesel particulate filter
- Tachometer
- EASY-Pack tailgate with electric operation for opening and closing
- Front door sills with "Mercedes-Benz" lettering illuminated in white
- Electric windows, front and rear
- Speed Limit Assistant
- Lockable, air-conditioned and illuminated glove compartment
- Interior headliner fabric crystal grey
- Mechanical child safety lock in the rear doors
- Communication module (LTE) for the use of Mercedes me connect services
- Charging cable for household socket, 5m, smooth
- Steering column mechanically adjustable lengthwise and heightwise.
- Navigation accessories: Pre-installation for navigation services
- Package: Chrome Interior Package
- Upholstery: ARTICO leatherette/DINAMICA microfiber
- Radio accessories: Digital radio (DAB)
- Tire pressure monitoring system (TPMS)
- Windscreen wipers with rain sensor
- 3-point seat belts
- Seats: Rear seat backrests foldable
- Phone accessories: Smartphone integration
- Cruise control with variable speed limiter
- Immobiliser
- Central locking with interior switch



## Extra equipment

- Tempered cupholders for driver and front passenger (Cool or warm drinks always within easy reach – this is the comfort drivers and front passengers enjoy with the tempered cupholders. Bottles, cans and cups up to 0.5 l are securely held in the center console. The temperature is maintained between 8° and 55° C, depending on preference.)
- Charging system: DC on-board charger (DC charging)
- Steering wheel: Multifunction sports steering wheel in Nappa leather (The multifunction sports steering wheel in Nappa leather with black control panels will delight you with every glance and every touch. The soft Nappa leather is of exquisite quality. The steering wheel thus conveys a passion for high-quality automotive details at all times.)
- Package: AIRMATIC package (air suspension system with adaptive damping system ADS+ - automatic level control, depending on - payload: load detection for a constant chassis level - driving speed: lowering for higher driving speeds - DYNAMIC SELECT driving program: lowering in the "Sport"/"Sport plus" program or raising in the "Offroad"/"Offroad plus" program - demand-based level control: - rear lowering for loading and unloading - individual selection of the chassis level)
- Package: AMG Line Exterior (diamond grille with chrome pins, integrated Mercedes star and one louvre painted in matte iridium silver with chrome inserts) - AMG Styling: AMG front apron with chrome trim strip, sporty and distinctive air intakes in the wheel arch trims, front and rear fender flares in body paint, AMG side sill trims, AMG rear apron with diffuser-look insert in black and chrome trim strip
- Package: Driving Assistance Package Plus (Active Distance Assist DISTRONIC - Active Steering Assist - Active Brake Assist - Evasive Steering Assist - Active Lane Keeping Assist - Active Blind Spot Assist - PRE-SAFE PLUS - Active Traffic Jam Assist)
- Package: MBUX Innovation Package (MBUX Interior Assistant - Head-up Display - MBUX Augmented Reality for Navigation - Full-screen navigation in the instrument cluster). Enjoy touchless operating convenience with the MBUX Interior Assistant: the innovative system detects and interprets your hand and arm movements. Selected functions can thus be activated literally in the blink of an eye. The system can distinguish between driver and front passenger – so that you access precisely the menus you want to use.)
- Package: Public Charging (Includes charging cable for wallbox and public charging stations, 5m, smooth and Remote and Charging Services Plus)
- Double sun visor (flexible glare protection for driver and front passenger)
- Instrument panel and door sills in ARTICO leatherette (Instrument panel in ARTICO leatherette - Door sills in ARTICO leatherette)
- Paint finish: Metallic
- Cargo area cover (with additional partition net).
- Steering wheel: Steering wheel heating
- MAGIC VISION CONTROL (heated, adaptive windscreen wiper system including heated wiper blades)
- MULTIBEAM LED (84 individually controllable high-performance LEDs per headlight - low beam and high beam in LED projection technology - Adaptive Highbeam Assist Plus - ULTRA RANGE high beam with a range of 650 m (maximum legally permissible beam range) - cornering light or cornering light with roundabout and intersection function - active curve illumination - extended fog light, city light, country road light, motorway light and bad weather light - off-road light - adaptive full-LED taillights)
- Package: Acoustic Comfort Package (Laminated safety glass with infrared-reflecting film for the windshield - Laminated safety glass with infrared-absorbing film for the side windows - Additional soundproofing measures)
- Package: ENERGIZING Package (ENERGIZING Comfort Programs: -Freshness -Vitality -Training: Video instructions, e.g., for muscle relaxation (only available when stationary) -Tips: 3-minute audio information for the sustainable promotion of health and well-being in everyday life; for the body regions head, shoulders, upper body, lower back and pelvis -Seat heating for driver and front passenger -AIR-BALANCE package for fragrance, ionization and purification of the air -Ambient lighting with program-specific light.)
- Package: KEYLESS-GO Comfort Package (vehicle key with KEYLESS-GO functionality - KEYLESS-GO access and drive authorization system - start/stop button - comfort opening and closing - door handles with chrome inlay - HANDS-FREE ACCESS - handle recess lighting - remote trunk lid closing - EASY-PACK tailgate)
- Package: Parking Package with 360° camera (12 sensors: four front, four rear, two on the sides in the front/rear bumper; detects parking spaces up to 35 km/h; steering control; in conjunction with automatic transmission, assists with acceleration, braking, and gear changes; 360° camera; visual/audible warning of detected obstacles in front of/ behind the vehicle up to approx. 10 km/h; Rear Cross Traffic Alert warns of detected cross traffic; Drive Away Assist (only in conjunction with automatic transmission); button on the center console or on the control panel for the assistance systems)
- Wheels: 55.9 cm (22") AMG light-alloy wheels in 5-twin-spoke design (tremolite grey painted and high-sheen finish with front axle 285/40 R 22 on 10.0 J x 22 ET 56.1, rear axle 325/35 R 22 on 11.0 J x 22 ET 50)



- Radio accessories: Burmester surround sound system (with 13 speakers and 590 watts system power. Experience enhanced performance and exclusivity with legendary Burmester sound. The high-performance speakers create a first-class surround sound experience. This can be specifically optimized for the front and rear seats, intensifying the listening experience. A quality that is also visible thanks to the high-quality Burmester logos.)
- Telephone: Multifunctional telephony (wireless connection of mobile phone with external antenna - wireless charging for compatible mobile phones - Bluetooth and WLAN pairing wirelessly via NFC (Near Field Communication) technology)
- Heat-insulating dark tinted glass
- Sunroof: Panoramic sunroof (large glass module made of heat-insulating, tinted safety glass - mesh wind deflector in the front area - electric sunshade with one-touch operation - comprehensive protection concept: - anti-pinch protection - automatic rain closing - PRE-SAFE closing function (only in conjunction with PRE-SAFE system))
- Illuminated running boards in aluminum look with rubber studs

### Brief expert findings

Documents submitted	At the time of the inspection, the vehicle registration certificate Part 2 (title) was available, but the vehicle registration certificate Part 1 (document) was not. (Copy)
VIN comparison	The vehicle identification number (VIN) was read from the vehicle and its conformity with the submitted documents was confirmed by the undersigned during the inspection.
Inspection	The inspection conditions were sufficient for the assessment of the vehicle. Lifting equipment and/or a pit were available for examining the vehicle.
Test drive	No test drive/shunting maneuver was carried out during the inspection of the vehicle.
Engine function test	An engine test run was performed.
readiness to drive	The vehicle was not capable of driving under its own power at the time of inspection, but can be moved on its own axle with the aid of assistance.

### Value reducing factors

No.	Component group	Description
1	Body	Identification plate - Damaged - Replace
2	Interior	Interior - Differs from the original configuration - Un- / install
3	Sill - right side	Sill - Scratch(es) - Smart repair
4	Side panel - rear left side	Sill - dent(s) - Smooth repair work
5	Rear bumper	Rear bumper - Scratch(es) - Smart repair
6	Misc.	Main inspection - Due - Perform
7	Boot lid / rear door	Boot lid - Dent / paintcoat damage - Smart repair
8	Instrument panel	Indicator light (MKL) - on - Perform diagnosis
9	Wheel / tyres	Alloy rim - front left side - Scratch(es) - Loss in value
10	Trim / covers	Brightware / decorative strip (+ lose (Stoßstange vorne)) - Paint defect - Replace
11	Front bumper	Front bumper - Scratch(es) - Paint
12	Wheel / tyres	Alloy rim - front right side - Damaged - Replace



## Wear and tear

No.	Component group	Description
1	Trim / covers	Door trim - front left side - Scratched - No deduction
2	Sill - left side	Sill - Scratch(es) - No deduction
3	Vehicle glazing	Windscreen - Stone chips - No deduction
4	Trim / covers	Door trim - rear right side - Scratched - No deduction
5	Trim / covers	Door trim - front right side - Scratched - No deduction
6	Trim / covers	Boot lid - interior trim - Scratch(es) - No deduction

The vehicle shows signs of wear and tear commensurate with its age and use.

## Order/Scope of Order

An order was placed to prepare a sales report for the described vehicle. This report includes the following:

- Description of key vehicle information
- Documentation of equipment features  
(*Delivery by third-party service providers*)
- Documentation of damage, defects, missing parts
- Documentation of prior damage, unrepaired prior damage, repainting
- A brief visual or functional inspection of the equipment details, if possible.  
(*Functional testing of driver assistance systems is not included in the scope of services!*)
- a photographic documentation of the vehicle

## Basis for the order

This product is based on the guidelines for vehicle returns and valuations published by Alphabet Fleet GmbH. The expert makes the specific findings in each individual case objectively, within the framework of the prescribed standards, based on their own expertise.

The vehicle inspection takes place in a fully assembled, unassembled state.

Damage or defects that can only be detected during disassembly/diagnostic work or through further investigation remain within the realm of prognostic risk. An increased risk exists due to concealed defects caused by fraudulent misrepresentation and which were not identifiable by the expert.

Damage or defects resulting from normal use or wear and tear of the vehicle will be accepted in accordance with the applicable standard.

There was no explicit identification or monetary consideration of the expected features within the product.

Features which, in their nature and extent, slightly exceed normal use but do not constitute unacceptable damage, will be documented and indicated as signs of wear, if applicable.

Damage or defects that, according to the applicable standard, can no longer be attributed to normal use or wear and tear are listed under "Value Reducing Factors" in the product description.

Depending on the product specification, a monetary ID can be provided. If this takes place, the costs can be 100% or pro rata depending on the vehicle's age and mileage.

## Previous damages

No apparent prior damage that had been repaired could be found on the vehicle.

## Comments

- Winterradsatz ist kein Bestandteil des Auslieferungsumfangs.



Figure 1: Diagonal front (left)



Figure 2: Diagonal front (right)



Figure 3: Diagonal rear (left)



Figure 4: Diagonal rear (right)

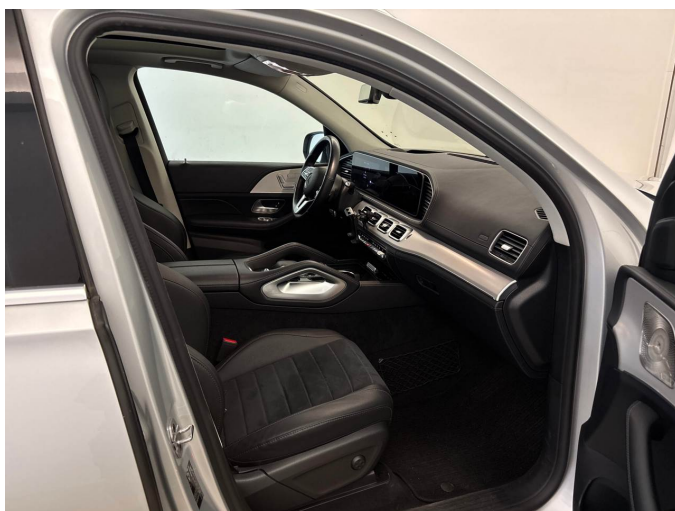


Figure 5: Interior - front

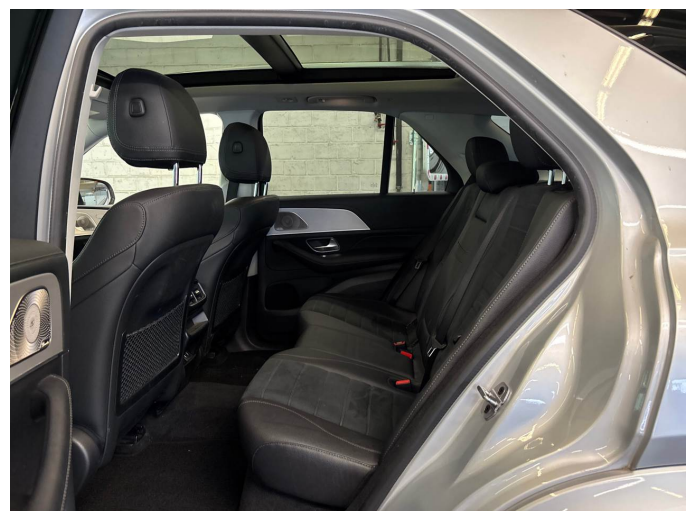


Figure 6: Interior - rear



Figure 7: Instrument cluster



Figure 8: Instrument panel



Figure 9: Interior 360° view



Figure 10: Cargo area



Figure 11: VIN

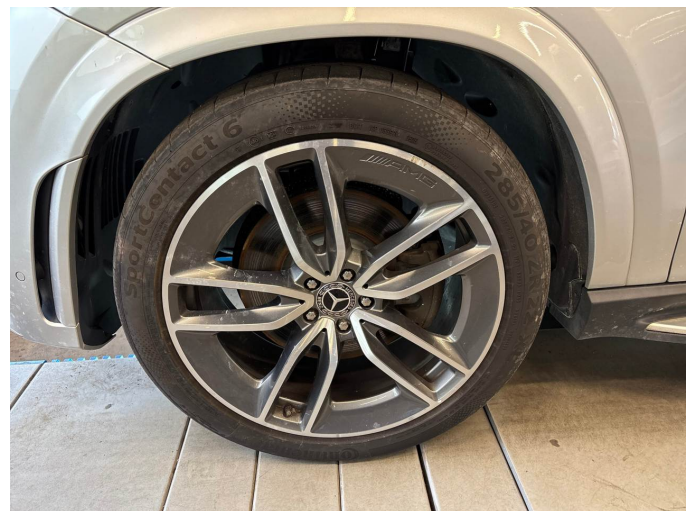


Figure 12: Mounted tyres



Figure 13: Documents

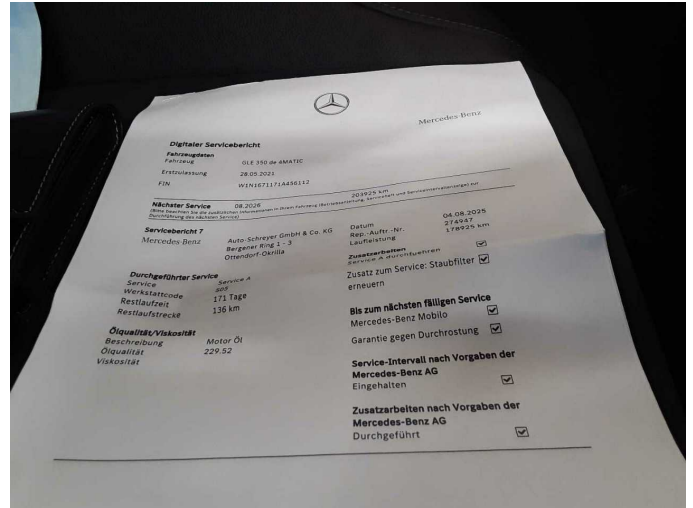


Figure 14: Documents

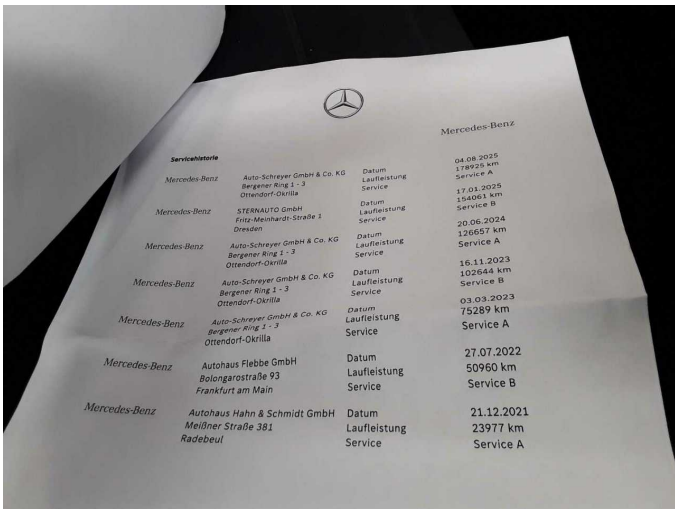


Figure 15: Documents



Figure 16: Documents



Figure 17: Additional tyres



Figure 18: Navigation



Figure 19: Misc.



Figure 20: Misc.



Figure 21: Misc.



Figure 22: Misc.



Figure 23: Misc.



Figure 24: Misc.



Figure 25: Misc.



Figure 26: Misc.

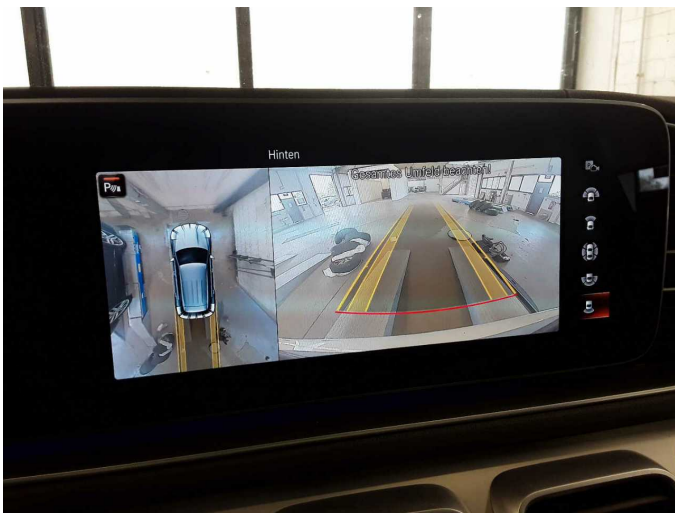


Figure 27: Misc.



Figure 28: Misc.



Figure 29: Misc.



Figure 30: Misc.



Figure 31: Misc.



Figure 32: Misc.



Figure 33: Misc.



Figure 34: Misc.



Figure 35: Misc.



Figure 36: Misc.



Figure 37: Misc.



Figure 38: Misc.



Damage 1: Body: Identification plate - Damaged - Replace



Damage 1: Body: Identification plate - Damaged - Replace



Damage 2: Interior: Interior - Differs from the original configuration - Un- / install



Damage 3: Sill - right side: Sill - Scratch(es) - Smart repair



**Damage 3:** Sill - right side: Sill - Scratch(es) - Smart repair



**Damage 4:** Side panel - rear left side: Sill - dent(s) - Smooth repair work



**Damage 4:** Side panel - rear left side: Sill - dent(s) - Smooth repair work



**Damage 5:** Rear bumper: Rear bumper - Scratch(es) - Smart repair



**Damage 5:** Rear bumper: Rear bumper - Scratch(es) - Smart repair



**Damage 7:** Boot lid / rear door: Boot lid - Dent / paintcoat damage - Smart repair



**Damage 7:** Boot lid / rear door: Boot lid - Dent / paintcoat damage - Smart repair



**Damage 8:** Instrument panel: Indicator light (MKL) - on - Perform diagnosis



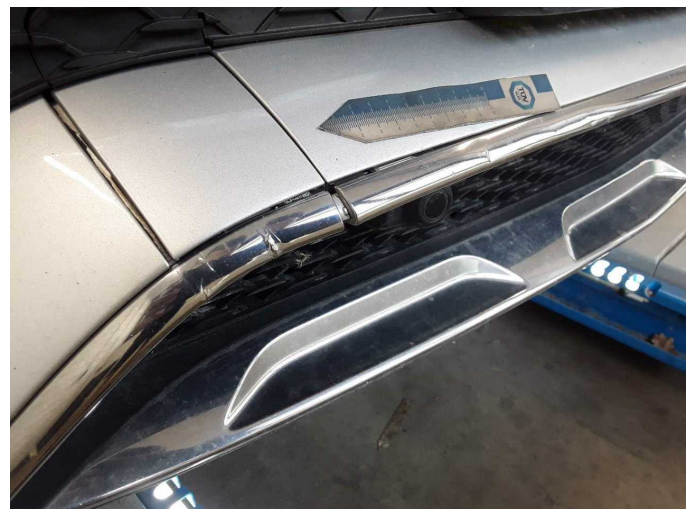
**Damage 9:** Wheel / tyres: Alloy rim - front left side - Scratch(es) - Loss in value



**Damage 9:** Wheel / tyres: Alloy rim - front left side - Scratch(es) - Loss in value



**Damage 10:** Trim / covers: Brightware / decorative strip (+ lose (Stoßstange vorne)) - Paint defect - Replace



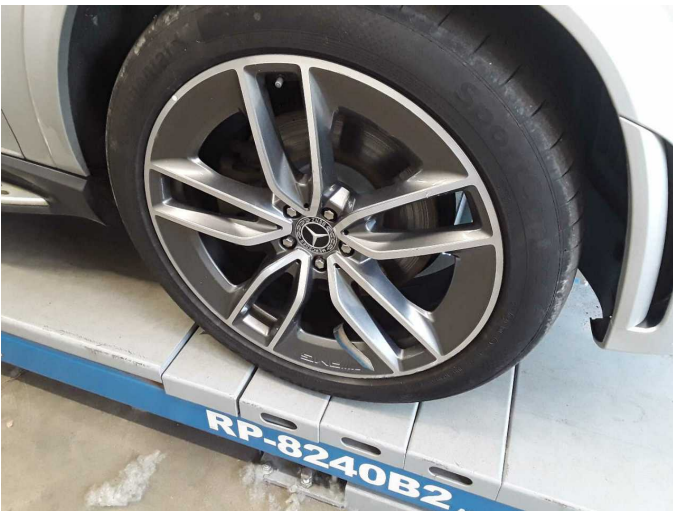
**Damage 10:** Trim / covers: Brightware / decorative strip (+ lose (Stoßstange vorne)) - Paint defect - Replace



**Damage 11:** Front bumper: Front bumper - Scratch(es) - Paint



**Damage 11:** Front bumper: Front bumper - Scratch(es) - Paint



**Damage 12:** Wheel / tyres: Alloy rim - front right side - Damaged - Replace



**Damage 12:** Wheel / tyres: Alloy rim - front right side - Damaged - Replace