

## Expertise

Protocol number: 46360470  
Order No. / Reference: 26644827  
Inspection date: 6 Jul 2026

Manufacturer: Skoda

Model: Superb Combi 2.0 TDI DSG Ambition

VIN: TMBJH9NP1N7036219



### Vehicle details

#### Manufacturer / Type / Model / Equipment

Skoda Superb Combi 2.0 TDI DSG Ambition

<b>Vehicle Identification number</b>	TMBJH9NP1N7036219
<b>Mileage (Read)</b>	144,096 km
<b>First registration</b>	16 May 2022
<b>Number of holders</b>	2
<b>Next periodical technical inspection</b>	05/2027 (Report not on hand)

<b>Power / Engine displacement</b>	110 kw / 1,968 ccm
------------------------------------	--------------------

<b>Fuel type / Cylinder</b>	Diesel / 4
-----------------------------	------------

<b>Gearbox / Number of gears</b>	Automatic / 7
----------------------------------	---------------

<b>Type of drive</b>	Front drive
----------------------	-------------

<b>Type of vehicle</b>	Station wagon
------------------------	---------------

<b>Colour / colour code</b>	Lava-Blau Metallic
-----------------------------	--------------------

<b>Doors / Seats</b>	5 / 5
----------------------	-------

<b>Upholstery type</b>	Cloth
------------------------	-------

<b>Colour of upholstery</b>	Black
-----------------------------	-------

<b>readiness to drive</b>	Roadworthy
---------------------------	------------



Vehicle details			
<b>Maintenance booklet / proof</b>	digital proof / complete	<b>Next maintenance in</b>	9,400 km
<b>Last service on / at</b>	12/2025 at 124,556 km		
<b>Key is / should be</b>	2 / 2	<b>FZG documents</b>	ZB#2 (B) was available (copy), ZB#1 (S) was not available.
		<b>Letter No.</b>	GJ966905
<b>Previous damage / Accident</b>	None detectable	<b>Repainting</b>	None detectable
<b>Inspection conditions</b>	sufficient	<b>Lifting equipment / pit</b>	No
<b>Test drive</b>	Not performed	<b>Engine function test</b>	Performed
<b>readiness to drive</b>	Roadworthy		
<b>Manufacturer key number/ type code number</b>	8004 / APL 01649		
<b>Emission standard</b>	EURO6;WLTP;AP;PI/CI; M, N1 I	<b>fine dust sticker</b>	
<b>Permitted total weight</b>	2,196 kg	<b>Empty weight</b>	

## Tyres

Mounted tyres				
#	Tyre size	Type of tyre	Manufacturer	Tread depth
1)	215/60 R16 95V	Summer tyres on Light alloy	Continental	3mm / 3mm
2)	215/60 R16 95V	Summer tyres on Light alloy	Continental	5mm / 5mm
Additional tyres				
#	Tyre size	Type of tyre	Manufacturer	Tread depth
1)	215/60 R16 99H	Winter tyres on Light alloy	Michelin	5mm / 5mm
2)	215/60 R16 99H	Winter tyres on Light alloy	Michelin	6mm / 6mm
Replacement				
Typ	Tyre size	Type of tyre	Manufacturer	Tread depth
	Tirefit	Expiration date 02/2026		

**Legend: Tread depth information for the left tire is listed first, for the right tire it is listed second on the axle in the direction of travel.**

TÜV SÜD Auto Partner GmbH  
Wiesenring 2  
04159 Leipzig

Inspection location  
Hartmann Fleet Professionals GmbH  
Leerenstraße 25  
29683 Bad Fallingbommel



## Equipment



## Standard equipment

- Closed storage compartments behind the wheel arches in the trunk, including cargo elements
- Airbag, driver and switchable passenger airbag
- Airbag, driver's knee airbag
- Airbag, head airbags
- Airbag, front side airbags
- Anti-lock braking system (ABS)
- Traction control (ASR)
- Electrically adjustable and heated exterior mirrors
- Exterior mirrors and door handles in body color
- Electrically folding exterior mirrors (with boarding lights - interior and exterior mirrors with automatic dimming)
- Hydraulic brake assist (HBA)
- Roof rails, black
- Diesel particulate filter and SCR catalyst
- Tachometer
- Easy Start (start-stop button instead of ignition lock)
- Electronic transverse differential lock (XDS+)
- Driving light assistant and rain sensor (tunnel light, coming and leaving home function)
- Front radar assist including city emergency braking function (The front radar assist warns of impending collisions and initiates braking to reduce the force of an unavoidable impact. The front radar assist continuously monitors the distance to the vehicle ahead using a radar sensor integrated into the radiator grille.)
- ISOFIX preparation on the outer rear seats, including top tether
- Boot cover, roll-up and removable, semi-automatic
- Front and rear headrests are height-adjustable.
- LED low beam
- LED taillights
- Steering wheel: height and reach adjustable
- Reading lights at the front and rear of the headliner
- Rear center armrest with cup holders and pass-through option
- Multi-collision brake
- Rear parking sensors
- Radio: Bolero infotainment system (capacitive 8" touch display in glass design - Wireless Smartlink (Apple CarPlay, Android Auto))
- Radio accessories: USB ports at the front (Type-C) and USB charging port (Type-A) in the center armrest
- Tire mobility kit (tire repair spray incl. compressor)
- Heated windshield washer nozzles
- Electromechanical power steering
- Seats: Adjustable lumbar support in the front seats
- Seats: Height-adjustable front seats
- Seats: Rear seat backrest split 60:40, foldable
- Sun visor on driver and passenger side with illuminated make-up mirror
- Start/stop system including brake energy recuperation
- 12V socket in the trunk
- 12V socket in the center console, front and rear
- Storage compartments (ticket holder on the windshield, 4 roof grab handles, rear with coat hooks, coat hooks on the B-pillar, holder for the warning vests in the front doors, glasses compartment in the headliner, storage compartments in the door panels (front and rear) with 1.5l bottle holders, cup holder in the front center console with easy-open bottle opening, storage pockets on the front seat backrests, storage compartments behind the wheel arches in the trunk including cargo elements, illuminated trunk)
- Illuminated glove compartment
- Hill start assist
- Grey headliner
- Decorative inlay silver brushed
- Digital instrument cluster (Virtual Cockpit) 10.2"
- Third brake light
- Electronic parking brake including auto-hold function
- Electronic Stability Control (ESC)
- Electric windows front and rear, including anti-pinch protection and child safety lock
- Cruise control system (cruise control) including speed limiter
- Transmission: 7-speed dual-clutch transmission (DSG)
- Tinted windows
- Heated rear window
- Rear window wiper including windshield washer system
- Child safety lock for rear doors & windows, electric
- Air Care Climatronic air conditioning (2-zone) (fully automatic, separately adjustable for driver and front passenger, including odor and allergen filter and air-conditioned glove compartment)
- Steering wheel: 2-spoke leather steering wheel with multifunction buttons (including gearshift and handbrake levers in leather)
- Front center armrest with storage compartment
- Engine drag torque control (MSR)
- LED fog lights with integrated cornering lights
- Upholstery: Cloth
- Radio accessories: Digital radio reception DAB+
- Radio accessories: In-car communication
- Radio accessories: Voice control
- Radio accessories: Wireless SmartLink for Apple CarPlay
- Tire pressure monitoring
- Wheels: 16" Orion alloy wheels (6.5J x 16" ET 41 with 215/60 R16 tires)
- Superb safety belts (Height-adjustable three-point front seat belts with belt tensioners - Three three-point rear seat belts - Belt fastening indicator for all seats)



- Telephone: Convenient hands-free phone system with Bluetooth (without connection to an external antenna)
- Chrome-plated elements (on air vents, light switches, music or navigation systems, air conditioning)
- Immobiliser

- SKODA Care Connect (SOS emergency call function (Emergency Call incl. automatic activation in the event of an accident with airbag deployment), Mobility service (connection for rapid assistance in case of breakdown), Information service (connection to the hotline for all questions relating to vehicle functions), Free remote vehicle access for 1 year (Remote Access) with access to vehicle data and functions via smartphone, e.g. parking position, activating hazard warning lights, current fuel level)
- Lashing eyes in the trunk
- Central locking with remote control

### Extra equipment

- Swiveling trailer hitch including trailer stabilization
- Electric tailgate opening (including boot cover and multifunction storage compartment)
- Package: Safety (Proactive occupant protection - rear side airbags - Isofix anchorage for passenger seat)
- Package: Transport (Combi) (Interior waste bin - Boot net - Variable loading floor - Luggage net partition)
- Front and rear parking sensors
- Reversing camera with washer nozzle
- Seats: Heated front seats
- Heated windshield
- Paint finish: Metallic
- Package: Business Amundsen (DSG) (Amundsen navigation system - voice control - Wi-Fi hotspot - Wireless Smartlink for Apple CarPlay - 8" capacitive touchscreen in glass design - Phonebox - Traveller assistance system (traffic sign recognition, predictive lane keeping assist pACC, adaptive lane keeping assist, emergency and traffic jam assist, capacitive steering wheel with hands-off detection) - 230 V socket and 3 USB ports, tablet holder - Sunset - Infotainment Online (3-year subscription))

### Brief expert findings

Documents submitted	At the time of the inspection, the vehicle registration certificate Part 2 (title) was available, but the vehicle registration certificate Part 1 (document) was not. (Copy)
VIN comparison	The vehicle identification number (VIN) was read from the vehicle and its conformity with the submitted documents was confirmed by the undersigned during the inspection.
Inspection	The inspection conditions were sufficient for the assessment of the vehicle. No lifting equipment or pit was available for inspecting the vehicle. Therefore, inspection of the vehicle's underside was only possible to a limited extent.
Test drive	No test drive/shunting maneuver was carried out during the inspection of the vehicle.
Engine function test	An engine test run was performed.
readiness to drive	The vehicle was roadworthy at the time of inspection.

### Value reducing factors

No.	Component group	Description
1	Misc.	Inspection / maintenance (2. Wartung überzogen)
2	Equipment	Tirefit filler - Expired - Replace
3	Side panel - rear right side	Side panel - dent(s) - Smart repair
4	Front bumper	Front bumper - Scratch(es) - Smart repair

### Wear and tear

No.	Component group	Description
1	Side panel - rear left side	Side panel - Scratch(es) - No deduction
2	Vehicle glazing	Windscreen - Stone chips - No deduction
3	Vehicle glazing	Rear window - Scratch(es) - No deduction

The vehicle shows signs of wear and tear commensurate with its age and use.



## Missing parts

### Description

Equipment - Umbrella

## Order/Scope of Order

An order was placed to prepare a sales report for the described vehicle. This report includes the following:

- Description of key vehicle information
- Documentation of equipment features  
(*Delivery by third-party service providers*)
- Documentation of damage, defects, missing parts
- Documentation of prior damage, unrepaired prior damage, repainting
- A brief visual or functional inspection of the equipment details, if possible.  
(*Functional testing of driver assistance systems is not included in the scope of services!*)
- a photographic documentation of the vehicle

## Basis for the order

This product is based on the guidelines for vehicle returns and valuations published by Alphabet Fleet GmbH. The expert makes the specific findings in each individual case objectively, within the framework of the prescribed standards, based on their own expertise.

The vehicle inspection takes place in a fully assembled, unassembled state.

Damage or defects that can only be detected during disassembly/diagnostic work or through further investigation remain within the realm of prognostic risk. An increased risk exists due to concealed defects caused by fraudulent misrepresentation and which were not identifiable by the expert.

Damage or defects resulting from normal use or wear and tear of the vehicle will be accepted in accordance with the applicable standard.

There was no explicit identification or monetary consideration of the expected features within the product.

Features which, in their nature and extent, slightly exceed normal use but do not constitute unacceptable damage, will be documented and indicated as signs of wear, if applicable.

Damage or defects that, according to the applicable standard, can no longer be attributed to normal use or wear and tear are listed under "Value Reducing Factors" in the product description.

Depending on the product specification, a monetary ID can be provided. If this takes place, the costs can be 100% d or pro rata depending on the vehicle's age and mileage.

## Previous damages

No apparent prior damage that had been repaired could be found on the vehicle.

## Comments

Der beiliegende Winterradsatz ist nicht Bestandteil der Ausstattung.



Figure 1: Diagonal front (left)



Figure 2: Diagonal front (right)



Figure 3: Diagonal rear (left)



Figure 4: Diagonal rear (right)



Figure 5: Interior - front



Figure 6: Interior - rear



Figure 7: Instrument cluster



Figure 8: Instrument panel



Figure 9: Interior 360° view



Figure 10: Cargo area

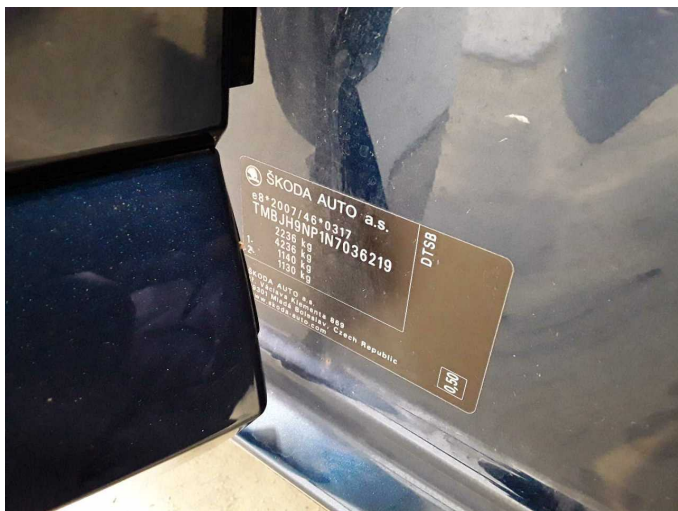


Figure 11: VIN



Figure 12: Mounted tyres



Figure 13: Documents



Figure 14: Documents



Figure 15: Documents



Figure 16: Additional tyres



Figure 17: Navigation

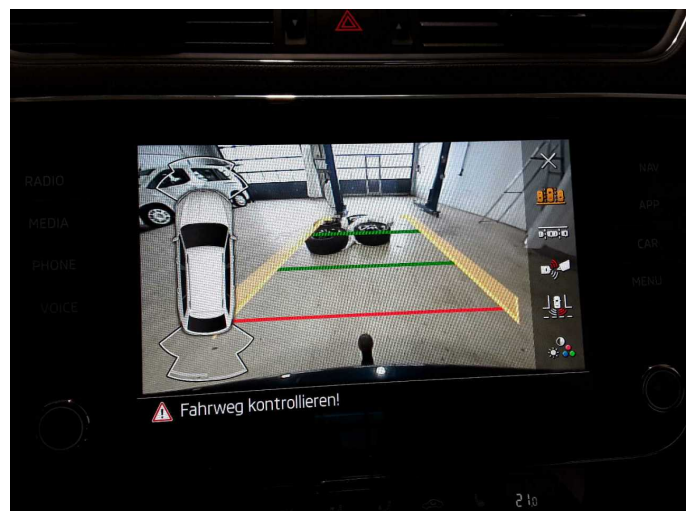


Figure 18: Misc.



Figure 19: Misc.

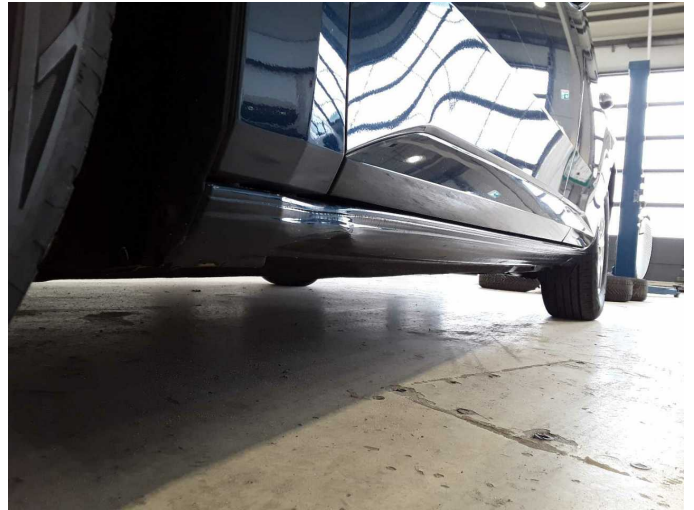


Figure 20: Misc.

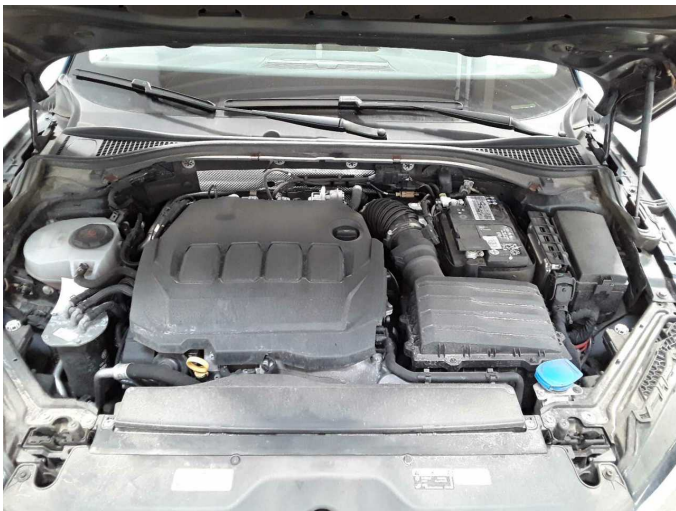


Figure 21: Misc.



Figure 22: Misc.



Figure 23: Misc.



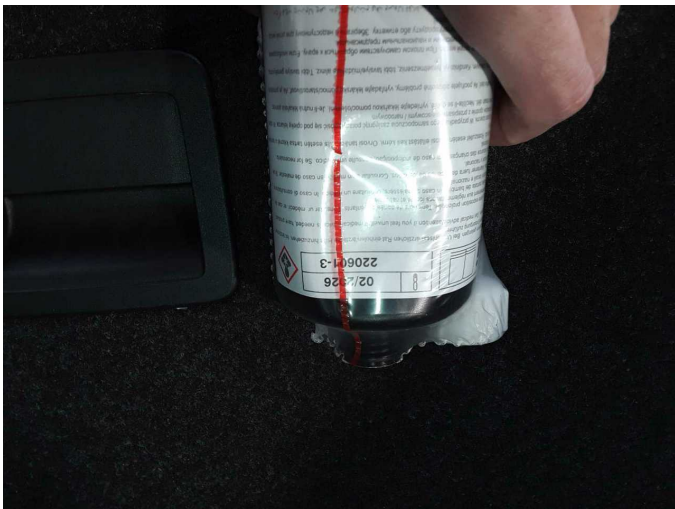
Figure 24: Misc.



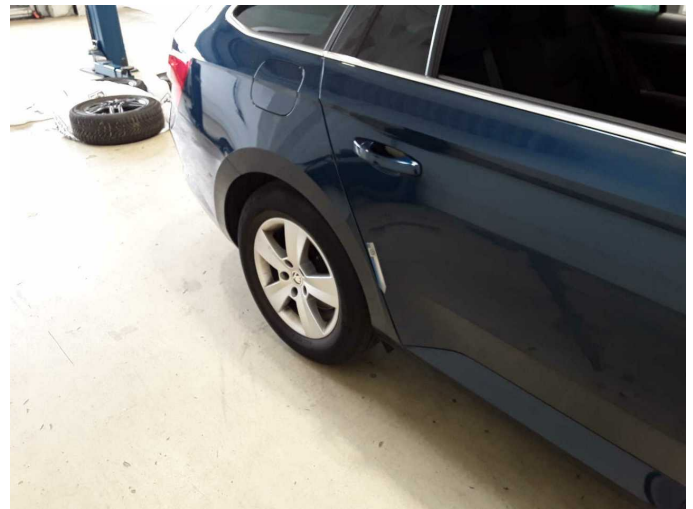
Figure 25: Misc.



Figure 26: Misc.



Damage 2: Equipment: Tirefit filler - Expired - Replace



Damage 3: Side panel - rear right side: Side panel - dent(s) - Smart repair



Damage 3: Side panel - rear right side: Side panel - dent(s) - Smart repair



Damage 4: Front bumper: Front bumper - Scratch(es) - Smart repair



**Damage 4:** Front bumper: Front bumper - Scratch(es) - Smart repair



# Wartungshistorie

(gemäß Auftraggeber Informationen)

Fahrgestellnummer: TMBJH9NP1N7036219

Hersteller / Modell: SKODA SKODA Superb Combi 2.0 TDI DSG Ambition

Datum	KM-Stand	Beschreibung
24.12.2025	124.556	Getriebeöl ern/prüfen; Motoröl b. Wartung; Ölfilter ern; Regelwartungsdienst; Wartung Sonstiges
23.05.2025	95.123	AU; Wartung Sonstiges
31.03.2025	93.242	Kraftstofffilter ern; Luftfiltereinsatz ern; Motoröl b. Wartung; Ölfilter ern; Regelwartungsdienst; Systemtest/Eigendiagnose; Wartung Sonstiges
14.06.2024	63.410	Bremse Sonstiges; Bremsflüssigkeit; Bremsflüssigkeit ern; Bremsklötze hinten; Bremsscheiben hinten; Motoröl b. Wartung; Ölfilter ern; Regelwartungsdienst; Wartung Sonstiges
07.06.2023	31.823	Motoröl b. Wartung; Ölfilter ern; Regelwartungsdienst; Wartung Sonstiges