

Expertise

Protocol number: 45582947
Order No. / Reference: 26382470
Inspection date: 22 May 2026

Manufacturer: Audi

Model: A4 Avant 35 TDI S tronic advanced

VIN: WAUZZZF49NA014943



Vehicle details

Manufacturer / Type / Model / Equipment

Audi A4 Avant 35 TDI S tronic advanced

Vehicle Identification number WAUZZZF49NA014943

Mileage (Read) 118,187 km

First registration 14 Jan 2022

Number of holders 1

Next periodical technical inspection 01/2027
(Report on hand)

Power / Engine displacement 120 kw / 1,968 ccm

Fuel type / Cylinder Hybrid Diesel / E / 4

Gearbox / Number of gears Automatic / 7

Type of drive Front drive

Type of vehicle Station wagon

Colour / colour code Ibisweiß

Doors / Seats 5 / 5

Upholstery type Cloth

Colour of upholstery Anthracite-Black



Vehicle details

Maintenance booklet / proof	digital proof / complete	Next maintenance in	1,900 km
Last service on / at	12/2025 at 110,996 km		
Key is / should be	2 / 2	FZG documents	ZB#2 (B) was available (copy), ZB#1 (S) was not available.
		Letter No.	GF435975
Previous damage / Accident	None detectable	Repainting	None detectable
Inspection conditions	sufficient	Lifting equipment / pit	yes
Test drive	Not performed	Engine function test	Performed
Manufacturer key number/ type code number	0588 / BPK 00669		
Emission standard	EURO6;WLTP;AP;PI/CI; M, N1 I	fine dust sticker	
Permitted total weight	2,165 kg	Empty weight	

Tyres

Mounted tyres

#	Tyre size	Type of tyre	Manufacturer	Tread depth
1)	225/50 R17 94Y	Summer tyres on Light alloy	Hankook	3mm / 3mm
2)	225/50 R17 94Y	Summer tyres on Light alloy	Hankook	4mm / 4mm

Additional tyres

#	Tyre size	Type of tyre	Manufacturer	Tread depth
1)	205/60 R16 92H	Winter tyres on Light alloy	Continental	5mm / 5mm
2)	205/60 R16 92H	Winter tyres on Light alloy	Continental	5mm / 5mm

Replacement

Typ	Tyre size	Type of tyre	Manufacturer	Tread depth
	Tirefit	Expiration date 09/2025		

Legend: Tread depth information for the left tire is listed first, for the right tire it is listed second on the axle in the direction of travel.



Equipment

Standard equipment

- Airbag for driver and front passenger
 - Accent areas matte black
 - Traction control (ASR)
 - Audi pre sense city
 - Exterior mirror housings in body color
 - third brake light, raised
 - Black roof rails
 - Diesel particulate filter (DPF)
 - Door sill trims with aluminum inlay at the front
 - Electronic Differential Lock (EDS)
 - Chassis: Standard chassis
 - Window channel strips in black (rubber)
 - Remote key, without SafeLock
 - Cruise control system including speed limiter
 - rear window wiper
 - Interior lighting
 - Child lock
 - Automatic air conditioning
 - boot floor mat
 - Steering column, manually adjustable in height and axis
 - Mild hybrid
 - Non-smoking version
 - Radio: MMI Radio plus
 - Radio accessories: Digital radio reception (DAB)
 - Tire repair kit
 - Seats: Rear seat backrest foldable
 - Start-stop system
 - Electronic immobilizer
 - Central locking "Keyless-Go" without deadbolt
- Airbag: Front side airbags and head airbag system
 - Anti-lock braking system (ABS)
 - Audi connect emergency call & service with Audi connect Remote & Control
 - Vehicle tool kit
 - Fabric headliner
 - Decorative inlays diamond lacquer silver grey
 - Tachometer
 - Electromechanical parking brake
 - Electronic Stability Control (ESC)
 - electric window regulator
 - Windscreen with acoustic glazing
 - front and rear floor mats
 - Transmission: S tronic 7-speed
 - Top speed limited to 210 km/h
 - Interior mirror dimming
 - ISOFIX child seat attachment and Top Tether for the outer rear seats
 - Manual cargo cover
 - Light/rain sensor
 - front center armrest
 - Wheel: Tires optimized for rolling resistance, speed-limited
 - Radio accessories: 8 speakers (passive) front and rear
 - Tire pressure monitoring system
 - Electromechanical power steering
 - Seats: Front seats manually adjustable
 - First aid kit with warning triangle
 - Reversible loading floor



Extra equipment

- AdBlue tank (24 liters) (larger tank for AdBlue solution to reduce nitrogen oxides in the exhaust gas using an SCR system)
- Audi virtual cockpit plus (fully digital 12.3-inch instrument cluster in full HD resolution with additional graphic display options: Classic, Sport and Dynamic design for flexible and needs-based display of the respective information according to the driver's needs: speed/RPM, map display, Audi connect services, radio/media information, etc. 2 different sized instrument display options. Configuration of on-board computer values in the tachometer is possible, including break recommendation).
- Electrically operated tailgate (The tailgate can be opened electrically by pressing the button on the vehicle key, in the driver's door, or the soft-touch button on the tailgate handle. Closing the tailgate is just as easy and convenient: simply press the button on the inside of the tailgate, the button in the driver's door, or the button on the vehicle key. A soft-close mechanism makes manual closing easier when necessary.)
- Front sports seats (with manual adjustment of seat height, seat longitudinal position, seat tilt, backrest tilt, headrest and belt height; with pronounced seat side bolsters for better lateral support in curves, extendable thigh support)
- Headrests: variable headrests for front seats (with manual adjustment of headrest height and distance)
- Mechanically swiveling towbar (The mechanically swiveling towbar can be conveniently locked and unlocked via a release mechanism. - Ball head mechanically swiveling with electric release - Ball rod and head made of forged steel, operated via a button in the luggage compartment - Trailer stabilization via the electronic stability control (ESC))
- Package: Ambient Lighting Package Plus (3 predefined color profiles; additional interactive and individual color profiles. The interactive color profile is controlled by the Audi drive select modes. 30 colors are available for the individual color profile. The color adjustments apply to the following contour and ambient lighting elements: - Entry lights on the underside of the rear doors (white) - Rear footwell lighting - Front cupholders (multicolor) - Ambient door lighting front/rear (multicolor) - Contour lighting (multicolor))
- Seat covers in fabric system (seat center panels in fabric system black or black-red - seat side bolsters, thigh support, headrests in solid black fabric)
- Steering wheel: Leather steering wheel in 3-spoke design with multifunction plus, shift paddles and steering wheel heating (height and distance of the steering wheel are manually adjustable - leather of the steering wheel and gear selector knob is color-matched to the selected color of the dashboard top - 12 multifunction buttons for convenient operation of the available infotainment features - shift paddles for manual changing of the driving modes)
- Airbags: Front and rear side airbags and head airbag system (Side airbags in the rear offer additional protection for rear passengers. Front side airbags are integrated into the seatbacks and rear side airbags into the side bolsters. With head airbag system: deploys in front of the side window area (front and rear) and thus protects front and outboard rear passengers in a side impact.)
- Assistance Package City / Parking PCZ
- Audi drive select (For individual vehicle tuning, with more dynamics or more comfort; allows the desired vehicle characteristics to be set in the available modes: - Auto - Comfort - Dynamic - Efficiency - Individual - Offroad (for Allroad quattro))
- Auxiliary heating/ventilation (The auxiliary heater warms the interior and defrosts the windows without starting the engine. The auxiliary ventilation supplies fresh air and lowers the interior temperature. Both functions can be activated via a timer or separate remote control. An intelligent control system with timer and departure time programming calculates the heating duration efficiently in terms of time and energy. Two heating modes are selectable: defrost (defrost mode for the windows only) and warm (warm-up mode for additional preheating of the interior).
- Business Package (MMI Navigation plus with MMI touch (including driver information system with color display) - Audi phone box - Leather steering wheel in 3-spoke design with multifunction plus - Heated front seats - Automatically dimming, frameless interior mirror - Electrically adjustable, heated and folding exterior mirrors, automatically dimming on both sides - Rear parking aid - High-beam assistant - Manual sunshade for the rear door windows)
- Comfort center armrest in the front (adjustable in tilt and longitudinally movable)
- Electrically adjustable, heated and folding exterior mirrors, automatically dimming on both sides (including curb view function for passenger-side exterior mirror with integrated LED turn signal, including heated windshield washer nozzles; the curb view function folds the passenger-side mirror down when reverse gear is engaged, giving the driver a better view of the curb edge)
- Front seat heating (heats seat and backrest center panels; with leather upholstery, sport seats and S sport seats also seat side bolsters - individually adjustable in multiple stages for driver and front passenger side via the climate control unit)
- Glazing: Privacy glazing (tinted windows) (rear window, rear door and side windows tinted)
- Hold assist (holds the vehicle indefinitely after stopping on typical road inclines and declines. The system is activated by pressing a button and allows the driver to start off comfortably.)



- Storage and luggage compartment package (flexible transport of items and comfort while traveling, consisting of: - storage net on the back of the front seatbacks - cupholder in the rear center armrest - storage compartment on the driver's side - lockable glove compartment in the luggage compartment: - luggage compartment net - net recesses left and right - tension strap right)
- Telephone: Audi Phone Box (features as per Bluetooth interface; additional functions: - inductive charging function (Qi standard) with 5 watts including forget-to-charge warning and charging status display in the MMI - telephone cradle measuring 170 × 87 mm in the front center armrest - hands-free calling with up to 2 connected mobile phones possible including vehicle-internal coupling antenna for connecting the mobile phone to the external antenna, resulting in low radiation in the vehicle interior and significantly improved reception quality; with LTE support)
- Telephone: Audi smartphone interface in conjunction with MMI Navigation plus with MMI touch (The Audi smartphone interface (Android Auto and Apple CarPlay) connects your smartphone to your Audi and seamlessly displays your smartphone content directly on the MMI display. Navigation, telephony, music, and selected third-party apps can be conveniently controlled via the MMI touchscreen and voice control. The connection can be established either using a suitable USB cable or wirelessly.)
- Wheel: Deselect low rolling resistance tires, remove speed limiter (17 inch) (Tires 225/50 R 17 94Y)
- LED matrix headlights, LED taillights and headlight cleaning system (Matrix LED technology combines a camera system with LED light sources and precise optics for highly adaptive light distribution. In addition to the matrix LED function, the headlights offer the following features: - visually enhanced daytime running lights - low beam - high beam - position lights - dynamic turn signals - cornering lights - all-weather lights - static cornering lights - motorway lights - automatic dynamic headlight range control - coming home/leaving home function)
- Luggage compartment mat, variably foldable (foldable and collapsible in several segments; usable in full length to cover the luggage compartment floor even with the rear seat backrest folded down, used for variable division of the load space; protective length sufficient also for the loading edge and the bumper.)
- Package: Assistance Package Tour iV Business PCN
- Parking assistant including parking aid plus (automatic steering during parking. Ultrasonic sensors search for suitable parallel or perpendicular parking spaces. For perpendicular spaces, the ideal parking path is calculated; for parallel spaces, the ideal entry and exit paths are calculated. The driver must accelerate, shift gears, and brake, as well as monitor the parking process. The system takes over the steering. The surround view warns of obstacles in front of and behind, and, depending on the steering angle, also of obstacles to the side.)
- Seats: Pneumatic lumbar support 816

Brief expert findings

Documents submitted	At the time of the inspection, the vehicle registration certificate Part 2 (title) was available, but the vehicle registration certificate Part 1 (document) was not. (Copy)
VIN comparison	The vehicle identification number (VIN) was read from the vehicle and its conformity with the submitted documents was confirmed by the undersigned during the inspection.
Inspection	The inspection conditions were sufficient for the assessment of the vehicle. Lifting equipment and/or a pit were available for examining the vehicle.
Test drive	No test drive/shunting maneuver was carried out during the inspection of the vehicle.
Engine function test	An engine test run was performed.

Value reducing factors

No.	Component group	Description
1	Equipment	Tirefit filler - Expired - Replace
2	Side panel - rear right side	Side panel - dent(s) - Smooth repair work
3	Door - rear left side	Door - Scratch(es) - Smart repair
4	Interior	Interior (Tiergeruch im Innenraum wahrnehmbar / Hunde Geruch) - Odour - Ozone treatment
5	Vehicle glazing	Windscreen (Mit Rissbildung im Fahrersichtfeld, nach Smart Repair) - Unprofessionally repaired - Replace
6	Rear bumper	Rear bumper - Scratch(es) - Paint



Wear and tear

No.	Component group	Description
1	Bonnet	Bonnet - Stone chips - No deduction
2	Front bumper	Front bumper - Stone chips - No deduction
3	Mudguard - left side	Mudguard - left side - Stone chips - No deduction

The vehicle shows signs of wear and tear commensurate with its age and use.

Order/Scope of Order

An order was placed to prepare a sales report for the described vehicle. This report includes the following:

- Description of key vehicle information
- Documentation of equipment features
(*Delivery by third-party service providers*)
- Documentation of damage, defects, missing parts
- Documentation of prior damage, unrepaired prior damage, repainting
- A brief visual or functional inspection of the equipment details, if possible.
(*Functional testing of driver assistance systems is not included in the scope of services!*)
- a photographic documentation of the vehicle

Basis for the order

This product is based on the guidelines for vehicle returns and valuations published by Alphabet Fleet GmbH. The expert makes the specific findings in each individual case objectively, within the framework of the prescribed standards, based on their own expertise.

The vehicle inspection takes place in a fully assembled, unassembled state.

Damage or defects that can only be detected during disassembly/diagnostic work or through further investigation remain within the realm of prognostic risk. An increased risk exists due to concealed defects caused by fraudulent misrepresentation and which were not identifiable by the expert.

Damage or defects resulting from normal use or wear and tear of the vehicle will be accepted in accordance with the applicable standard.

There was no explicit identification or monetary consideration of the expected features within the product.

Features which, in their nature and extent, slightly exceed normal use but do not constitute unacceptable damage, will be documented and indicated as signs of wear, if applicable.

Damage or defects that, according to the applicable standard, can no longer be attributed to normal use or wear and tear are listed under "Value Reducing Factors" in the product description.

Depending on the product specification, a monetary ID can be provided. If this takes place, the costs can be 100% or pro rata depending on the vehicle's age and mileage.

Previous damages

No apparent prior damage that had been repaired could be found on the vehicle.



Figure 1: Diagonal front (left)



Figure 2: Diagonal front (right)



Figure 3: Diagonal rear (left)



Figure 4: Diagonal rear (right)



Figure 5: Interior - front



Figure 6: Interior - rear



Figure 7: Instrument cluster



Figure 8: Instrument panel



Figure 9: Interior 360° view



Figure 10: Cargo area



Figure 11: VIN



Figure 12: Mounted tyres



Figure 13: Documents



Figure 14: Documents



Figure 15: Documents



Figure 16: Documents

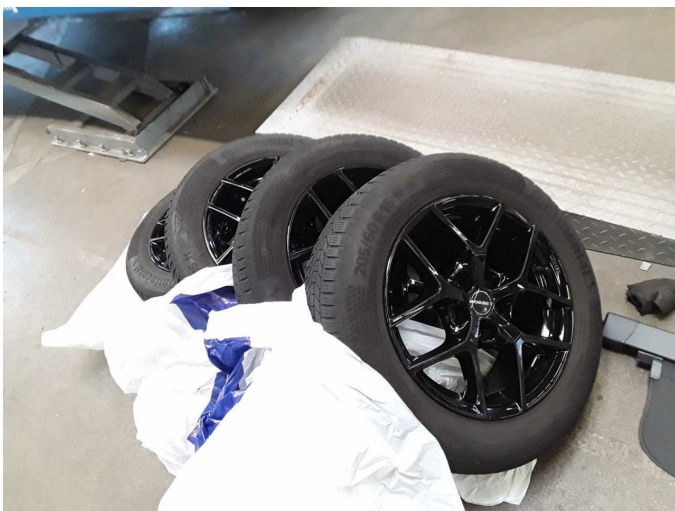


Figure 17: Additional tyres



Figure 18: Navigation



Figure 19: Misc.



Figure 20: Misc.



Figure 21: Misc.



Figure 22: Misc.



Figure 23: Misc.



Figure 24: Misc.



Figure 25: Misc.



Figure 26: Misc.



Figure 27: Misc.



Figure 28: Misc.



Figure 29: Misc.



Figure 30: Misc.



Figure 31: Misc.



Figure 32: Misc.



Figure 33: Misc.



Figure 34: Misc.



Figure 35: Misc.

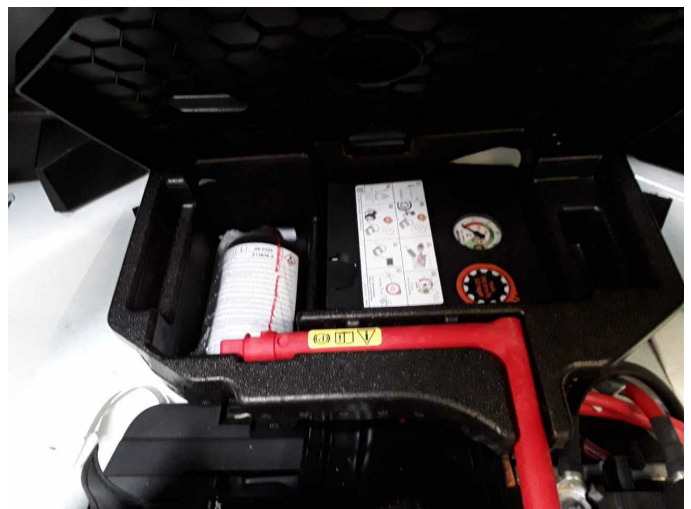


Figure 36: Misc.



Figure 37: Misc.



Damage 1: Equipment: Tirefit filler - Expired - Replace



Damage 2: Side panel - rear right side: Side panel - dent(s) - Smooth repair work



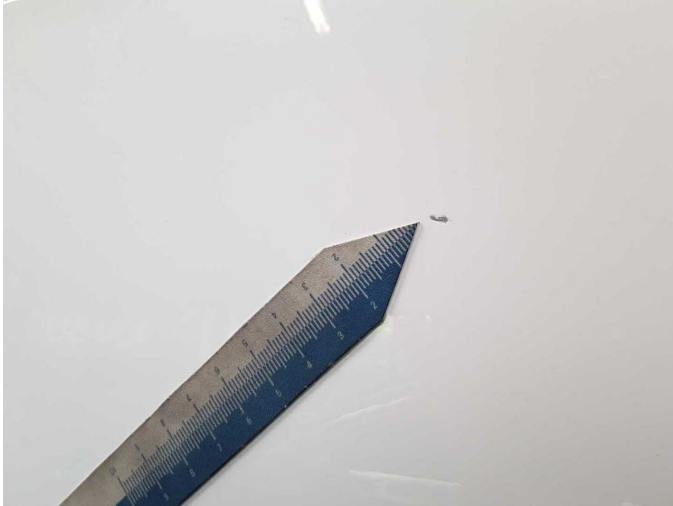
Damage 2: Side panel - rear right side: Side panel - dent(s) - Smooth repair work



Damage 3: Door - rear left side: Door - Scratch(es) - Smart repair



Damage 3: Door - rear left side: Door - Scratch(es) - Smart repair



Damage 3: Door - rear left side: Door - Scratch(es) - Smart repair



Damage 5: Vehicle glazing: Windscreen (Mit Rissbildung im Fahrersichtfeld, nach Smart Repair) - Unprofessionally repaired - Replace



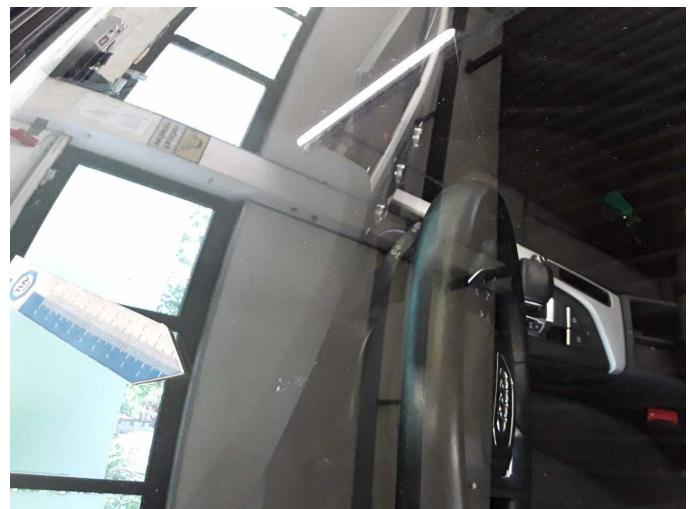
Damage 5: Vehicle glazing: Windscreen (Mit Rissbildung im Fahrersichtfeld, nach Smart Repair) - Unprofessionally repaired - Replace



Damage 5: Vehicle glazing: Windscreen (Mit Rissbildung im Fahrersichtfeld, nach Smart Repair) - Unprofessionally repaired - Replace



Damage 5: Vehicle glazing: Windscreen (Mit Rissbildung im Fahrersichtfeld, nach Smart Repair) - Unprofessionally repaired - Replace



Damage 5: Vehicle glazing: Windscreen (Mit Rissbildung im Fahrersichtfeld, nach Smart Repair) - Unprofessionally repaired - Replace



Damage 5: Vehicle glazing: Windscreen (Mit Rissbildung im Fahrersichtfeld, nach Smart Repair) - Unprofessionally repaired - Replace



Damage 6: Rear bumper: Rear bumper - Scratch(es) - Paint



Damage 6: Rear bumper: Rear bumper - Scratch(es) - Paint



Wear and tear 1: Bonnet: Bonnet - Stone chips - No deduction



Wear and tear 1: Bonnet: Bonnet - Stone chips - No deduction



Wear and tear 2: Front bumper: Front bumper - Stone chips - No deduction



Wear and tear 2: Front bumper: Front bumper - Stone chips - No deduction



Wartungshistorie

(gemäß Auftraggeber Informationen)

Fahrgestellnummer: WAUZZZF49NA014943
Hersteller / Modell: AUDI AUDI A4 Avant 35 TDI S tronic advanced

Datum	KM-Stand	Beschreibung
15.12.2025	110.996	Bremsflüssigkeit; Bremsflüssigkeit ern; Motoröl b. Wartung; Ölfilter ern; Regelwartungsdienst; Wartung Sonstiges
06.08.2025	98.165	Motoröl b. Wartung; Ölfilter ern; Ölwechsel; Wartung Sonstiges
27.01.2025	84.416	Reparatur Sonstiges; Systemtest/Eigendiagnose
24.01.2025	84.416	Bremsbelagfühler ern; Bremse Sonstiges; Bremsklötze hinten; Bremsklötze vorne; Bremsscheiben hinten; Bremsscheiben vorne; HU + AU; Luftfiltereinsatz ern; Motoröl b. Wartung; Ölfilter ern; Regelwartungsdienst; Wartung Sonstiges
07.12.2023	58.279	Bremsflüssigkeit; Bremsflüssigkeit ern; Getriebeöl ern/prüfen; Kraftstofffilter ern; Motoröl b. Wartung; Ölfilter ern; Regelwartungsdienst; Reparatur Sonstiges; Wartung Sonstiges
17.07.2023	43.472	Motoröl b. Wartung; Ölfilter ern; Ölwechsel; Wartung Sonstiges
10.02.2023	28.466	Motoröl b. Wartung; Ölfilter ern; Regelwartungsdienst; Wartung Sonstiges
30.09.2022	14.479	Motoröl b. Wartung; Ölfilter ern; Ölwechsel; Wartung Sonstiges