

Expertise

Protocol number: 46047313
Order No. / Reference: 26488495
Inspection date: 17 Jun 2026

Manufacturer: Ford

Model: Transit Custom 280 L1H1 LKW VA Trend

VIN: WF0YXXTTGYNT01459



Vehicle details

Manufacturer / Type / Model / Equipment

Ford Transit Custom 280 L1H1 LKW VA Trend

Vehicle Identification number WF0YXXTTGYNT01459

Mileage (Read) 129,405 km

First registration 22 Nov 2022

Number of holders 1

Power / Engine displacement 96 kw / 1,995 ccm

Fuel type / Cylinder Diesel / 4

Gearbox / Number of gears Manual / 6

Type of drive Front drive

Type of vehicle Van

Colour / colour code Frost-Weiß

Doors / Seats 4 / 3

Upholstery type Cloth

Colour of upholstery Black-Grey



Vehicle details

Maintenance booklet / proof	digital proof / complete	Next maintenance in	25,000 km
Last service on / at	11/2025 at 111,241 km		
Key is / should be	2 / 2	FZG documents	ZB#2 (B) was available (copy), ZB#1 (S) was not available.
		Letter No.	GP476984
Previous damage / Accident	Detectable	Repainting	Detectable
Inspection conditions	sufficient	Lifting equipment / pit	yes
Test drive	Not performed	Engine function test	Performed
Manufacturer key number/ type code number	8566 / BMU 07069		
Emission standard	EURO6;WLTP;AR;PI/CI;N1 III, N2	fine dust sticker	
Permitted total weight	2,800 kg	Empty weight	

Tyres

Mounted tyres

#	Tyre size	Type of tyre	Manufacturer	Tread depth
1)	215/65 R15 104T	Winter tyres on Steel rim with wheel cover	Goodyear	5mm / 5mm
2)	215/65 R15 104T	Winter tyres on Steel rim with wheel cover	Goodyear	3mm / 3mm

Additional tyres

#	Tyre size	Type of tyre	Manufacturer	Tread depth
1)	215/65 R15 104T	Summer tyres on Steel	Goodyear	3mm / 3mm
2)	215/65 R15 104T	Summer tyres on Steel	Goodyear	6mm / 6mm

Replacement

Typ	Tyre size	Type of tyre	Manufacturer	Tread depth
E	215/65 R15 104T	Summer tyres on Steel	Goodyear	6 mm

Legend: Tread depth information for the left tire is listed first, for the right tire it is listed second on the axle in the direction of travel.



Equipment

Standard equipment

- 1 battery
- Anti-lock braking system with electronic brake force distribution (EBD)
- roof, flat
- Double-leaf rear door with 180° opening angle (without window)
- Electronic Stability Program (ESP) with Traction Control System (TCS)
- FordPass Connect
- Generator, 240 A
- Cruise control including imitation leather steering wheel
- Lockable glove compartment with lid
- Front air conditioning
- Paint finish: Solid color paint
- Cargo area floor: Vinyl floor covering, sealed, "Easy Clean"
- Emergency brake assist including emergency brake light
- Front and rear parking pilot system including fog lights
- Radio: Audio system 13 additionally with DAB/DAB+
- Wheels/Tires: Spare wheel, steel wheel
- Headlights: Halogen projector headlights
- Sliding door: Sliding door, right
- Mud flaps front and rear
- Half-height side wall cladding
- Seat belts
- Start-stop system
- Power outlet: 12-volt connection
- Immobiliser
- Central locking with remote control
- Second key with remote control

Extra equipment

- Radio: Audio System 24: Ford audio system including Ford SYNC 3 with AppLink, DAB/DAB+, navigation system. (Radio (FM/AM) 8" touchscreen multifunction display (20.32 cm), 4 speakers, FordPass Connect Wi-Fi hotspot, integrated control panel and audio remote control on the steering wheel, Ford SYNC 3 with touchscreen (hands-free system with voice control, SMS readout/sending function, Bluetooth, Emergency Assistance...), AppLink (advanced voice control, privacy mode, Android Auto and Apple CarPlay support, capacitive touchscreen technology,...), dynamic navigation, lane guidance, road map for Western Europe)

Retrofitted equipment

- All-weather floor mats
- Winter complete wheels steel

- Driver's side airbag
- Exterior mirrors, electrically adjustable and heated
- On-board computer
- Headliner in driver's cab
- Tachometer
- Third brake light
- Front electric windows
- Ford Easy Fuel
- Warranty: 2-year Ford new car warranty including Ford Assistance mobility guarantee
- Transmission: 6-speed transmission
- Interior lighting with delay circuit
- Fuel tank 70 l
- Cargo area lighting with activatable switch-off delay
- Steering column, adjustable in height and reach
- Package: Style-Color Package
- Particulate filter: diesel particulate filter
- Wheel trims
- Wheels: Steel wheels 6.5 J x 15 with 215/65 R 15 tires
- Sliding door entry light automatically illuminates when the door is opened
- Side protection strips
- Power steering
- Seats: Seat package 13 - partition (load-through flap), without window (Custom Truck Trend)
- Lashing eyes 8
- Heat-insulating glazing, lightly tinted
- Auxiliary heater, electric

- Airbag (passenger side)
- LED lights in the cargo area
- Package: Service Line (shelving systems (left and right) - vise - ventilation for transporting gas cylinders - HDF wall cladding - screen-printed wooden floor in the cargo area (the standard lashing eyes are omitted))
- Power outlet: 12-volt connection in the cargo area (D-pillar)
- Rear swing door without window (without interior mirror)
- Voltage converter (230 V/150 Watt (socket))

- Fire extinguisher 1 kg



Brief expert findings

Documents submitted	At the time of the inspection, the vehicle registration certificate Part 2 (title) was available, but the vehicle registration certificate Part 1 (document) was not. (Copy)
VIN comparison	The vehicle identification number (VIN) was read from the vehicle and its conformity with the submitted documents was confirmed by the undersigned during the inspection.
Inspection	The inspection conditions were sufficient for the assessment of the vehicle. Lifting equipment and/or a pit were available for examining the vehicle.
Test drive	No test drive/shunting maneuver was carried out during the inspection of the vehicle.
Engine function test	An engine test run was performed.

Value reducing factors

No.	Component group	Description
1	Trim / covers	Trim / covers - Missing - Replace
2	Side panel - rear right side	Side panel - dent(s) - Smooth repair work
3	Rear bumper	Rear bumper - Scratch(es) - Smart repair
4	Front bumper	Front bumper - Scratch(es) - Smart repair
5	Wheel / tyres	Tyre - right (Winterreifen Profiltiefe <4mm) - Does not meet the leasing specifications - Replace
6	Body	Body - Glued / labelled - De-glue / neutralise
7	Boot lid / rear door	Boot lid - Dent / paintcoat damage - Paint
8	Vehicle glazing	Windscreen - Broken / torn - Replace

Wear and tear

No.	Component group	Description
1	Door - front left side	Door - dent(s) - No deduction
2	Bonnet	Bonnet - Stone chips - No deduction
3	Sliding door, right	Sliding door (Farb unterschied und seitenwand) - No deduction
4	Body	Body - Stone chips - No deduction
5	Wheel / tyres	Wheel cover - rear right side - Scratch(es) - No deduction
6	Wheel / tyres	Wheel cover - front right side - Scratch(es) - No deduction

The vehicle shows signs of wear and tear commensurate with its age and use.

Previous damages

No.	Previous damage	Extent of damage (Net)
1	Rear, Side right, Professionally repaired, Invoice of repair done Non-existent, from 9 Feb 2026	2.253,85 €
2	Side right, Professionally repaired, Invoice of repair done Non-existent, from 8 Feb 2024	3.991,31 €
3	Side right, Professionally repaired, Invoice of repair done Non-existent, from 10 Jul 2024	7.380,46 €

Repainting

No.	Repainting
1	Side panel - rear right side, Professionally carried out, Invoice of repair done Non-existent
2	Door - rear right side, Professionally carried out, Invoice of repair done Non-existent

Paint coat thickness measurement

Side panel - rear right side	236 µm	Door - rear right side	171 µm
------------------------------	--------	------------------------	--------



Order/Scope of Order

An order was placed to prepare a sales report for the described vehicle. This report includes the following:

- Description of key vehicle information
- Documentation of equipment features
(Delivery by third-party service providers)
- Documentation of damage, defects, missing parts
- Documentation of prior damage, unrepaired prior damage, repainting
- A brief visual or functional inspection of the equipment details, if possible.
(Functional testing of driver assistance systems is not included in the scope of services!)
- a photographic documentation of the vehicle

Basis for the order

This product is based on the guidelines for vehicle returns and valuations of light commercial vehicles published by Alphabet Fleet Management GmbH. The expert makes the specific findings in each individual case objectively, within the framework of the prescribed standards, based on their own expertise.

The vehicle inspection takes place in a fully assembled, unassembled state.

Damage or defects that can only be detected during disassembly/diagnostic work or through further investigation remain within the realm of prognostic risk. An increased risk exists due to concealed defects caused by fraudulent misrepresentation and which were not identifiable by the expert.

Damage or defects resulting from normal use or wear and tear of the vehicle will be accepted in accordance with the applicable standard.

There was no explicit identification or monetary consideration of the expected features within the product.

Features which, in their nature and extent, slightly exceed normal use but do not constitute unacceptable damage, will be documented and indicated as signs of wear, if applicable.

Damage or defects that, according to the applicable standard, can no longer be attributed to normal use or wear and tear are listed under "Value Reducing Factors" in the product description.

Depending on the product specification, a monetary ID can be provided. If this takes place, the costs can be 100% or pro rata depending on the vehicle's age and mileage.

Previous damages

Professionally repaired previous damages were found at the vehicle.



Figure 1: Diagonal front (left)



Figure 2: Diagonal front (right)



Figure 3: Diagonal rear (left)



Figure 4: Diagonal rear (right)

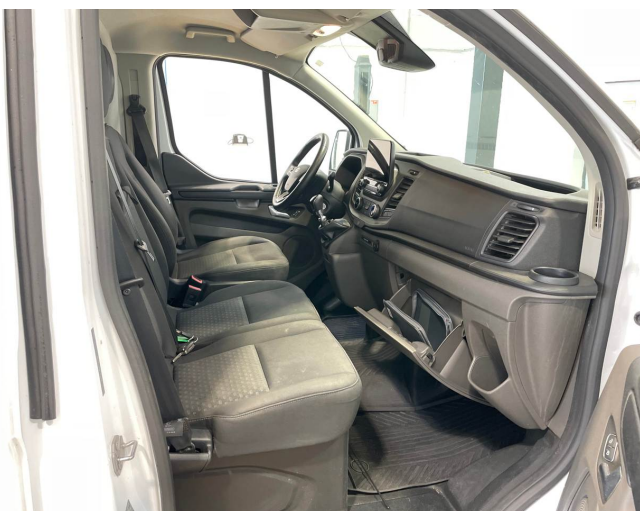


Figure 5: Interior - front

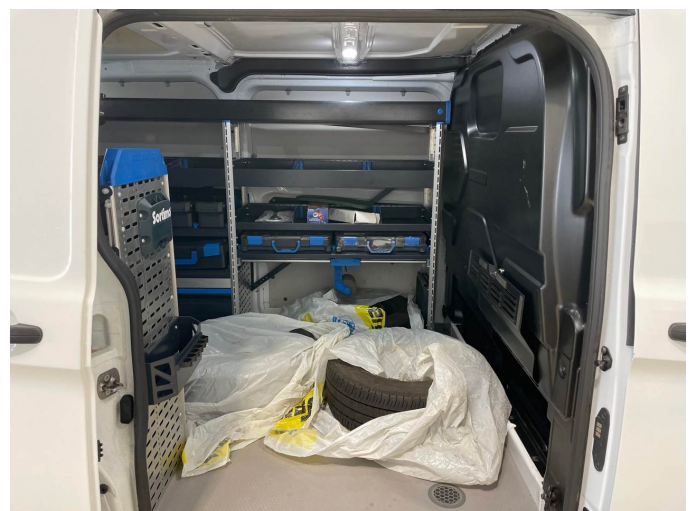


Figure 6: Interior - rear



Figure 7: Instrument cluster



Figure 8: Instrument panel



Figure 9: Interior 360° view



Figure 10: Cargo area



Figure 11: VIN



Figure 12: Mounted tyres



Figure 13: Documents



Figure 14: Additional tyres



Figure 15: Additional tyres



Figure 16: Navigation



Figure 17: Misc.



Figure 18: Misc.



Figure 19: Misc.



Figure 20: Misc.



Figure 21: Misc.



Figure 22: Misc.



Figure 23: Misc.



Figure 24: Misc.



Figure 25: Misc.



Figure 26: Misc.



Figure 27: Misc.



Figure 28: Misc.

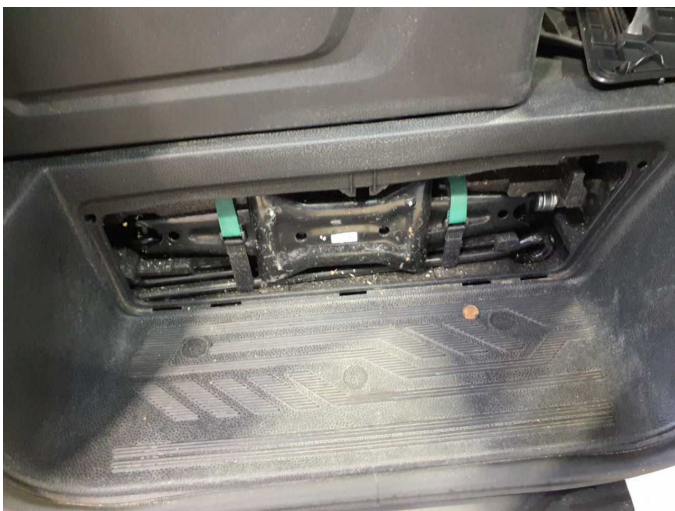


Figure 29: Misc.



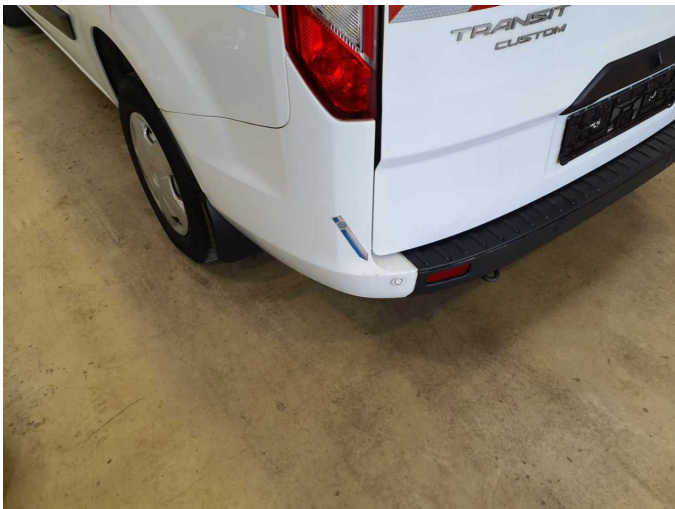
Damage 1: Trim / covers: Trim / covers - Missing - Replace



Damage 2: Side panel - rear right side: Side panel - dent(s) - Smooth repair work



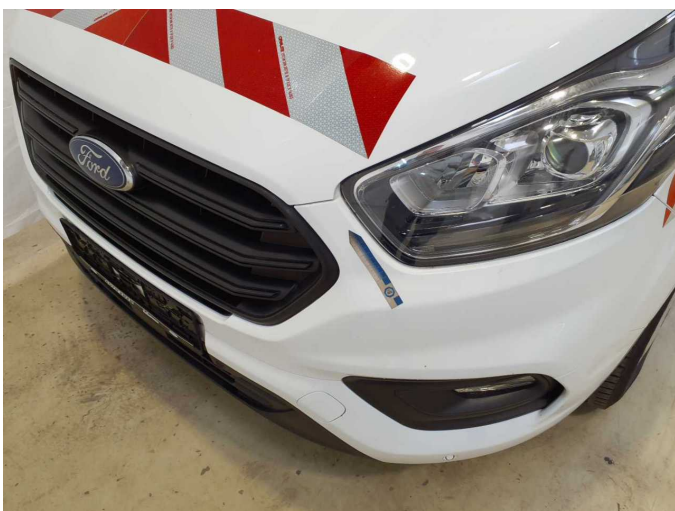
Damage 2: Side panel - rear right side: Side panel - dent(s) - Smooth repair work



Damage 3: Rear bumper: Rear bumper - Scratch(es) - Smart repair



Damage 3: Rear bumper: Rear bumper - Scratch(es) - Smart repair



Damage 4: Front bumper: Front bumper - Scratch(es) - Smart repair



Damage 4: Front bumper: Front bumper - Scratch(es) - Smart repair



Damage 4: Front bumper: Front bumper - Scratch(es) - Smart repair



Damage 5: Wheel / tyres: Tyre - right (Winterreifen Profiltiefe <4mm) - Does not meet the leasing specifications - Replace



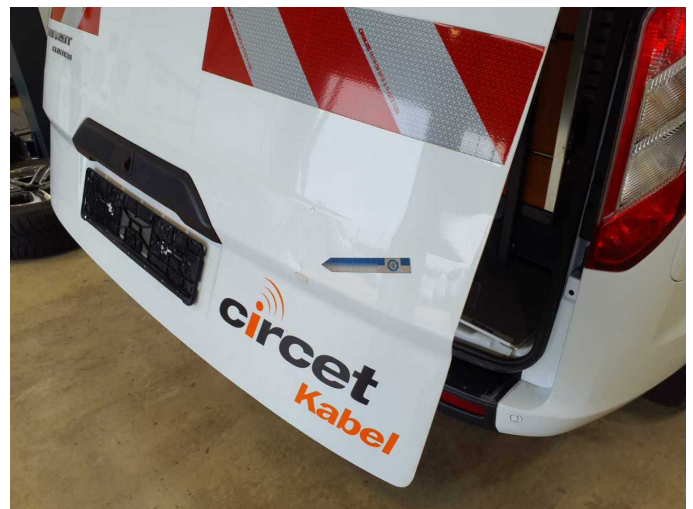
Damage 5: Wheel / tyres: Tyre - right (Winterreifen Profiltiefe <4mm) - Does not meet the leasing specifications - Replace



Damage 6: Body: Body - Glued / labelled - De-glug / neutralise



Damage 6: Body: Body - Glued / labelled - De-glug / neutralise



Damage 7: Boot lid / rear door: Boot lid - Dent / paintcoat damage - Paint



Damage 7: Boot lid / rear door: Boot lid - Dent / paintcoat damage - Paint



Damage 7: Boot lid / rear door: Boot lid - Dent / paintcoat damage - Paint



Damage 8: Vehicle glazing: Windscreen - Broken / torn - Replace



Damage 8: Vehicle glazing: Windscreen - Broken / torn - Replace



Wear and tear 3: Sliding door, right: Sliding door (Farb unterschied und seitenwand) - No deduction



Wear and tear 4: Body: Body - Stone chips - No deduction



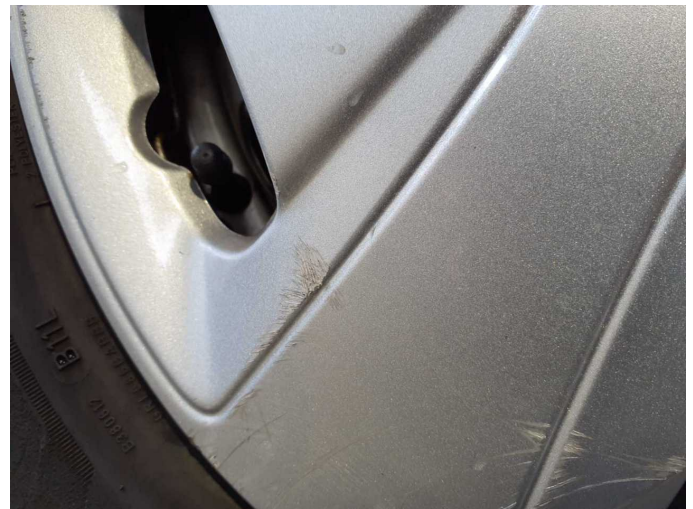
Wear and tear 4: Body: Body - Stone chips - No deduction



Wear and tear 5: Wheel / tyres: Wheel cover - rear right side - Scratch(es) - No deduction



Wear and tear 5: Wheel / tyres: Wheel cover - rear right side - Scratch(es) - No deduction



Wear and tear 5: Wheel / tyres: Wheel cover - rear right side - Scratch(es) - No deduction



Wear and tear 6: Wheel / tyres: Wheel cover - front right side - Scratch(es) - No deduction



Wear and tear 6: Wheel / tyres: Wheel cover - front right side - Scratch(es) - No deduction



Wear and tear 6: Wheel / tyres: Wheel cover - front right side -
Scratch(es) - No deduction



Repainting 1: Side panel - rear right side



Repainting 1: Side panel - rear right side



Repainting 2: Door - rear right side



Repainting 2: Door - rear right side



Wartungshistorie

(gemäß Auftraggeber Informationen)

Fahrgestellnummer: WF0YXXTTGYNT01459

Hersteller / Modell: FORD FORD Transit Custom 280 L1H1 LKW VA Trend

Datum	KM-Stand	Beschreibung
12.11.2025	111.241	Bremse Sonstiges; Bremsklötze hinten; Bremsklötze vorne; Bremsscheiben + Klötze h; Bremsscheiben + Klötze v; Bremsscheiben hinten; Bremsscheiben vorne; Motoröl b. Wartung; Ölfilter ern; Regelwartungsdienst; Wartung Sonstiges
01.04.2025	87.594	HU + AU
28.11.2024	76.405	Luftfiltereinsatz ern; Motoröl b. Wartung; Ölfilter ern; Regelwartungsdienst; Wartung Sonstiges
28.12.2023	42.547	Motoröl b. Wartung; Ölfilter ern; Regelwartungsdienst; Wartung Sonstiges