

Expertise

Protocol number: 45934518
Order No. / Reference: 26308171-1
Inspection date: 9 Jun 2026

Manufacturer: Ford

Model: Kuga 2.0 EcoBlue 4x4 Aut. ST-LINE

VIN: WF0FXXWPMFLK68479



Vehicle details

Manufacturer / Type / Model / Equipment

Ford Kuga 2.0 EcoBlue 4x4 Aut. ST-LINE

Vehicle Identification number WF0FXXWPMFLK68479

Mileage (Read) 258,732 km

First registration 21 Jul 2020

Number of holders 2

Next periodical technical inspection 07/2027

(Report not on hand)

Power / Engine displacement 140 kw / 1,995 ccm

Fuel type / Cylinder Diesel / 4

Gearbox / Number of gears Automatic / 8

Type of drive All-wheel drive

Type of vehicle Saloon car

Colour / colour code Frost-Weiß

Doors / Seats 5 / 5

Upholstery type Cloth

Colour of upholstery Black-Anthracite

Re-import no

readiness to drive Not roadworthy / not moveable



Vehicle details			
Maintenance booklet / proof	digital proof / complete	Next maintenance in	24 %
Last service on / at	09/2025 at 235,808 km		
Key is / should be	1 / 2	FZG documents	ZB#2 (B) was available (copy), ZB#1 (S) was not available.
		Letter No.	FV055463
Previous damage / Accident	None detectable	Repainting	None detectable
Inspection conditions	sufficient	Lifting equipment / pit	No
Test drive	Not performed	Engine function test	Performed
readiness to drive	Not roadworthy / not moveable		
Manufacturer key number/ type code number	8566 / BTH 00017		
Emission standard	EURO6;WLTP;DG;PI/CI; M, N1 I	fine dust sticker	
Permitted total weight	2,245 kg	Empty weight	

Tyres

Mounted tyres				
#	Tyre size	Type of tyre	Manufacturer	Tread depth
1)	225/60 R18 104W	All-season tyres on Light alloy	Hankook	6mm / 6mm
2)	225/60 R18 104W	All-season tyres on Light alloy	Michelin	6mm / 6mm
Replacement				
Typ	Tyre size	Type of tyre	Manufacturer	Tread depth
	Tirefit	Expiration date 10/2028		

Legend: Tread depth information for the left tire is listed first, for the right tire it is listed second on the axle in the direction of travel.



Equipment

Standard equipment

- All-wheel drive
- Anti-lock braking system
- Passenger airbag deactivation
- Tires: Tire repair kit
- Body styling kit
- Fabric headliner
- Roof rails, black
- Diesel particulate filter
- Dual exhaust system
- Front door sill trim
- Lane keeping assist including lane keeping assist
- Electric parking brake with auto hold function
- Ford EcoCoach
- FordPass Connect
- Luggage compartment lighting
- Transmission: 8-speed automatic
- Heated rear window
- Inductive charging station for mobile devices
- Intelligent Protection System (IPS)
- Air conditioning with automatic temperature control
- Front and rear headrests (5) height adjustable
- LED taillights
- Leather steering wheel, ST-Line design, flattened at the bottom and with red decorative stitching
- Front center console with integrated armrest
- Navigation system: Ford navigation system including Ford SYNC 3
- Front and rear parking pilot system
- Upholstery: Cloth
- Pre-Collision Assist
- Windscreen wipers with rain sensor
- Headlight assistant with day/night sensor
- Seats: Driver and passenger seats, 8-way manually adjustable
- Seats: Rear bench seat, sliding, with split-folding backrest
- Seats: Front seats, individually and variably heated
- Start-stop system
- Carpet floor mats front and rear
- Electric door child safety lock
- Immobiliser
- Ambient lighting
- Electrically adjustable, heated and folding exterior mirrors
- Tires: 7.5 J x 18 alloy wheels (4) in 5x2-spoke design in rock metallic
- third brake light
- Overhead console with glasses storage compartment
- Roof spoiler
- 12.3-inch digital instrument panel
- Tachometer
- Electronic Stability Program (ESP)
- Electric windows front and rear
- Ford Easy Fuel
- Ford Power Start Function & Ford Key Free System
- Luggage compartment cover, roller blind, removable
- Cruise control
- Illuminated glove compartment
- rear window wiper
- Interior mirror, automatically dimming
- ISOFIX mounts including top tether attachment points on the outer seats of the 2nd row.
- Paint finish: Solid
- LED fog lights
- Steering wheel: Paddle shifters on the steering wheel
- Steering column, adjustable in height and reach
- MyKey key system
- Emergency brake light, pulsating illumination of the brake lights during hard braking
- Pedal assembly with aluminum surface
- Post-Collision Assist
- Tire Pressure Monitoring System (TPMS)
- Headlights with delayed shut-off
- Power steering
- Seats: Map pockets on the driver's and front passenger's seat backrests
- Seats: Front sports seats with integrated headrests
- Sun visor on driver and passenger side
- Power outlet: 12-volt connection in the luggage compartment
- Black trim around the side windows
- Central locking with remote control and remote luggage compartment release



Extra equipment

- Package: Driver Assistance (Automatic Transmission) (Intelligent Adaptive Cruise Control with Traffic Sign Recognition - Traffic Jam Assist with Stop & Go Function and Lane Keeping Assist - Wrong-Way Driver Warning - Evasive Steering Assist - Driver Alert (standard on Titanium X and ST-Line X) - Blind Spot Assist including Cross Traffic Alert - Active Park Assist with parallel and perpendicular parking function and semi-automated driving - Front camera with split-view technology and rear-view camera - Door edge protectors)
- Paint finish: Solid color, special color
- Electric tailgate, sensor-controlled (opens and closes via foot movement)
- Package: Winter (Heated windscreen - Heated leather steering wheel - Heated outer rear seats)
- Reversible luggage compartment mat
- Safety barrier
- Side windows from the 2nd row of seats and rear window, dark tinted.
- Swiveling towbar (incl. ESP trailer stabilization)
- Tires: 4 all-season tires 225/60 R 18 100V

Brief expert findings

Documents submitted	At the time of the inspection, the vehicle registration certificate Part 2 (title) was available, but the vehicle registration certificate Part 1 (document) was not. (Copy)
VIN comparison	The vehicle identification number (VIN) was read from the vehicle and its conformity with the submitted documents was confirmed by the undersigned during the inspection.
Inspection	The inspection conditions were sufficient for the assessment of the vehicle. No lifting equipment or pit was available for inspecting the vehicle. Therefore, inspection of the vehicle's underside was only possible to a limited extent.
Test drive	No test drive/shunting maneuver was carried out during the inspection of the vehicle.
Engine function test	An engine test run was performed.
readiness to drive	The vehicle was not roadworthy at the time of inspection, but only capable of being towed.

Value reducing factors

No.	Component group	Description
1	Interior	Interior - Soiled - Conditioning
2	Vehicle glazing	Windscreen - Broken / torn - Replace
3	Gearbox	Gearbox - Defective - repair according to calculation

Wear and tear

No.	Component group	Description
1	Trim / covers	Boot lid - interior trim - Scratch(es) - No deduction
2	Front bumper	Front bumper - Stone chips - No deduction
3	Body	A-pillar - left side - Stone chips - No deduction

The vehicle shows signs of wear and tear commensurate with its age and use.

Missing parts

Description

Equipment - Vehicle key



Order/Scope of Order

An order was placed to prepare a sales report for the described vehicle. This report includes the following:

- Description of key vehicle information
- Documentation of equipment features
(Delivery by third-party service providers)
- Documentation of damage, defects, missing parts
- Documentation of prior damage, unrepaired prior damage, repainting
- A brief visual or functional inspection of the equipment details, if possible.
(Functional testing of driver assistance systems is not included in the scope of services!)
- a photographic documentation of the vehicle

Basis for the order

This product is based on the guidelines for vehicle returns and valuations published by Alphabet Fleet GmbH. The expert makes the specific findings in each individual case objectively, within the framework of the prescribed standards, based on their own expertise.

The vehicle inspection takes place in a fully assembled, unassembled state.

Damage or defects that can only be detected during disassembly/diagnostic work or through further investigation remain within the realm of prognostic risk. An increased risk exists due to concealed defects caused by fraudulent misrepresentation and which were not identifiable by the expert.

Damage or defects resulting from normal use or wear and tear of the vehicle will be accepted in accordance with the applicable standard.

There was no explicit identification or monetary consideration of the expected features within the product.

Features which, in their nature and extent, slightly exceed normal use but do not constitute unacceptable damage, will be documented and indicated as signs of wear, if applicable.

Damage or defects that, according to the applicable standard, can no longer be attributed to normal use or wear and tear are listed under "Value Reducing Factors" in the product description.

Depending on the product specification, a monetary ID can be provided. If this takes place, the costs can be 100% or pro rata depending on the vehicle's age and mileage.

Previous damages

No apparent prior damage that had been repaired could be found on the vehicle.



Figure 1: Diagonal front (left)



Figure 2: Diagonal front (right)



Figure 3: Diagonal rear (left)



Figure 4: Diagonal rear (right)



Figure 5: Interior - front



Figure 6: Interior - rear



Figure 7: Instrument cluster



Figure 8: Instrument panel



Figure 9: Interior 360° view



Figure 10: Cargo area



Figure 11: VIN

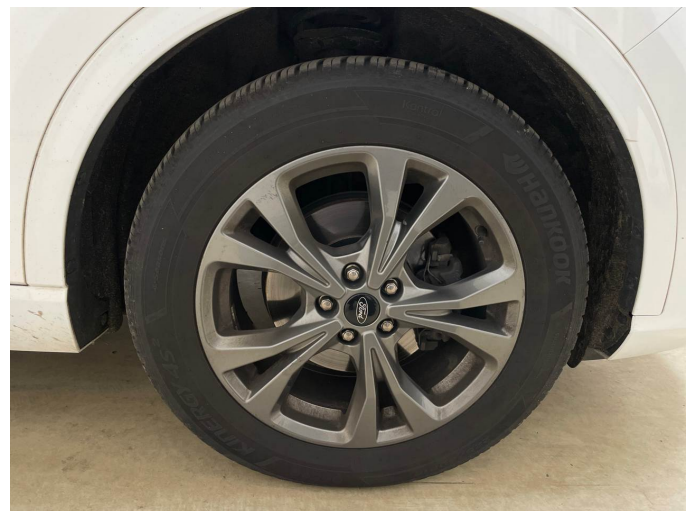


Figure 12: Mounted tyres



Figure 13: Documents



Figure 14: Documents

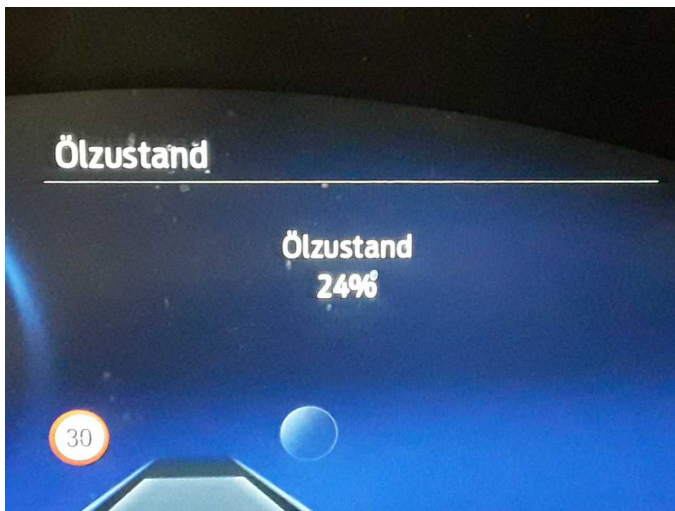


Figure 15: Documents



Figure 16: Navigation

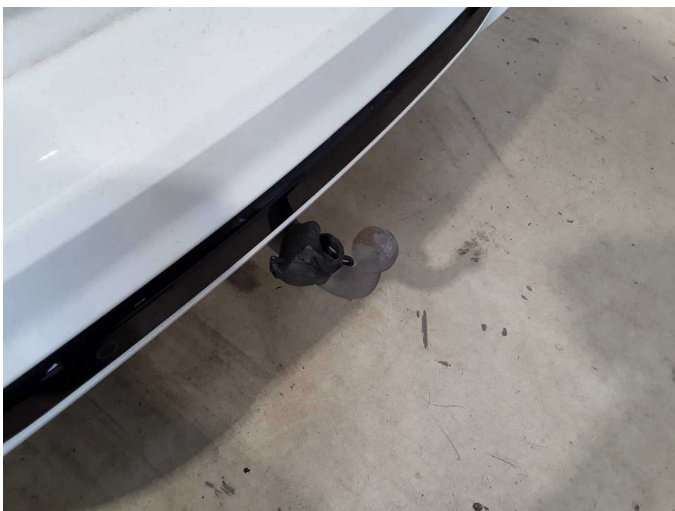


Figure 17: Misc.



Figure 18: Misc.



Figure 19: Misc.



Figure 20: Misc.



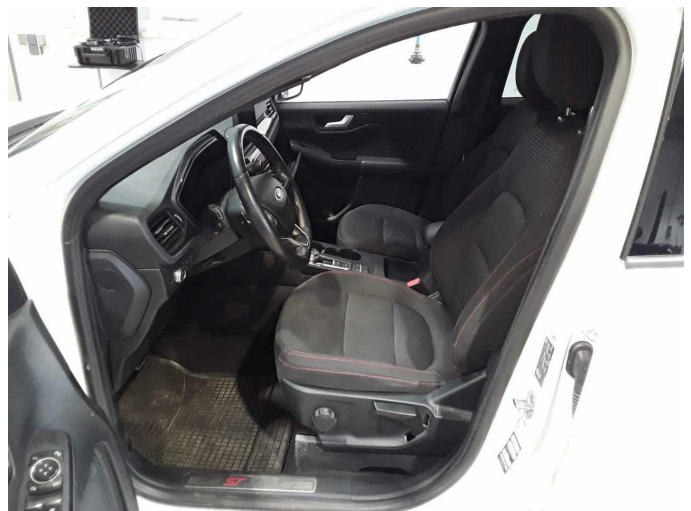
Figure 21: Misc.



Figure 22: Misc.



Figure 23: Misc.



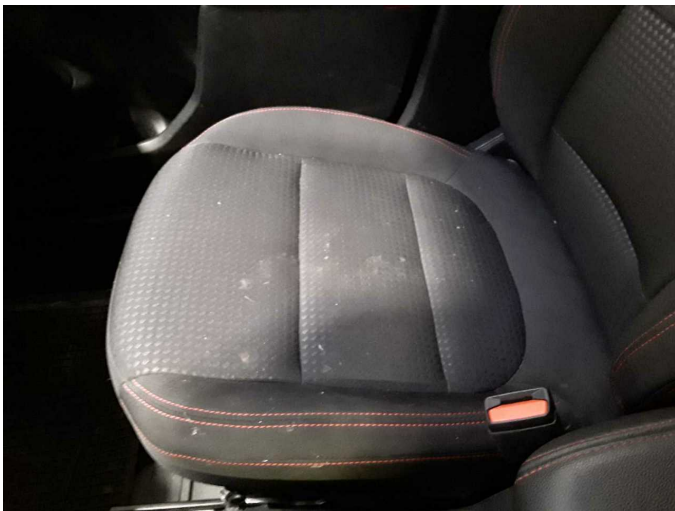
Damage 1: Interior: Interior - Soiled - Conditioning



Damage 1: Interior: Interior - Soiled - Conditioning



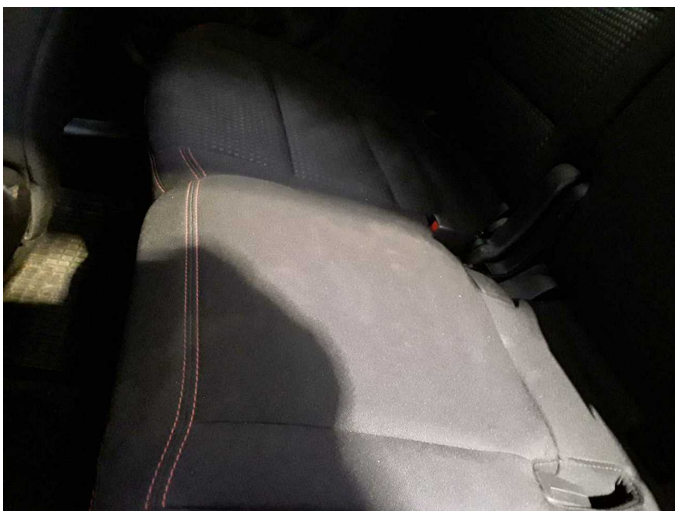
Damage 1: Interior: Interior - Soiled - Conditioning



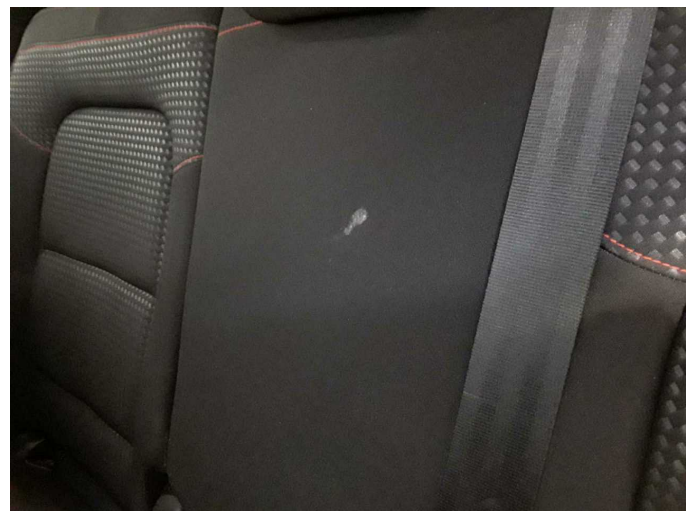
Damage 1: Interior: Interior - Soiled - Conditioning



Damage 1: Interior: Interior - Soiled - Conditioning



Damage 1: Interior: Interior - Soiled - Conditioning



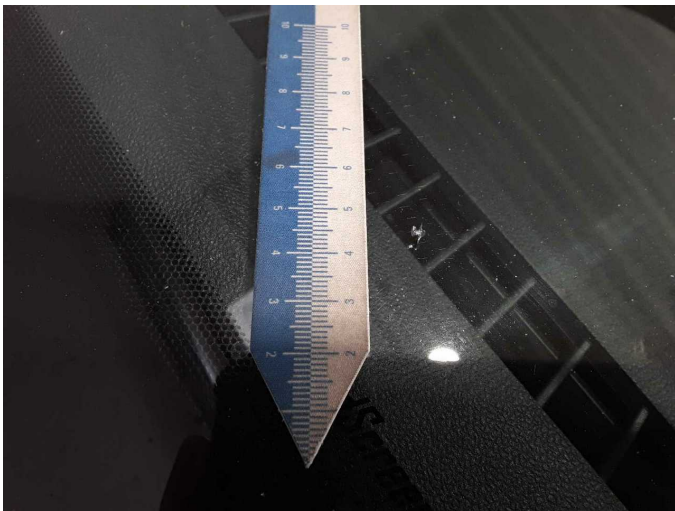
Damage 1: Interior: Interior - Soiled - Conditioning



Damage 2: Vehicle glazing: Windscreen - Broken / torn - Replace



Damage 2: Vehicle glazing: Windscreen - Broken / torn - Replace



Damage 2: Vehicle glazing: Windscreen - Broken / torn - Replace