

Expertise

Protocol number: 46332650
Order No. / Reference: 26487366
Inspection date: 3 Jul 2026

Manufacturer: Mercedes-Benz

Model: GLA 180 d 8G-DCT Style

VIN: W1N4N1AB9PJ539111



Vehicle details

Manufacturer / Type / Model / Equipment

Mercedes-Benz GLA 180 d 8G-DCT Style

Vehicle Identification number W1N4N1AB9PJ539111

Mileage (Read) 69,918 km

First registration 14 Jun 2024

Number of holders 1

Power / Engine displacement 85 kw / 1,950 ccm

Fuel type / Cylinder Diesel / 4

Gearbox / Number of gears Automatic / 8

Type of drive Front drive

Type of vehicle SUV

Colour / colour code MOUNTAINGRAU -
METALLICLACK

Doors / Seats 5 / 5

Upholstery type Cloth / leather
combination

Colour of upholstery Black-Dark grey



Vehicle details

Maintenance booklet / proof	digital proof / complete	Next maintenance in	63 Tag(e)
Last service on / at	08/2025 at 49,648 km		
Key is / should be	2 / 2	FZG documents	ZB#2 (B) was available (copy), ZB#1 (S) was not available.
		Letter No.	GV717149
Previous damage / Accident	None detectable	Repainting	Detectable
Inspection conditions	sufficient	Lifting equipment / pit	No
Test drive	Not performed	Engine function test	Performed
Manufacturer key number/ type code number	2222 / ATH 00069		
Emission standard	EURO6;WLTP;AP;PI/CI; M, N1 I	fine dust sticker	
Permitted total weight	2,135 kg	Empty weight	

Tyres

Mounted tyres				
#	Tyre size	Type of tyre	Manufacturer	Tread depth
1)	215/65 R17 99H	Winter tyres on Light alloy	Michelin	7mm / 7mm
2)	215/65 R17 99H	Winter tyres on Light alloy	Michelin	6mm / 6mm

Additional tyres				
#	Tyre size	Type of tyre	Manufacturer	Tread depth
1)	215/65 R17 99V	Summer tyres on Light alloy	Continental	4mm / 4mm
2)	215/65 R17 99V	Summer tyres on Light alloy	Continental	4mm / 4mm

Replacement				
Typ	Tyre size	Type of tyre	Manufacturer	Tread depth
	Tirefit	Expiration date 09/2028		

Legend: Tread depth information for the left tire is listed first, for the right tire it is listed second on the axle in the direction of travel.

TÜV SÜD Auto Partner GmbH
Gutenbergstraße 13
70771 Leinfelden-Echterdingen

Inspection location
ARS Altmann AG Automobillogistik
Römerstraße 3
64560 Riedstadt



Equipment



Standard equipment

- ADAPTIVE BRAKE with HOLD function, hill start assist, pre-filling and drying brakes in wet conditions
- Airbag: Kneebag for driver
- Airbag: Windowbags (left/right)
- Active Brake Assist
- Anti-lock braking system (ABS)
- Center console armrest for driver and front passenger with integrated storage compartment
- Outdoor temperature display
- Border trim strip in silver chrome
- Roof rails in polished aluminum
- Double cup holder
- Third brake light in LED technology
- ECO start/stop function
- Door sills with "Mercedes-Benz" lettering
- Electronic Stability Program (ESP) (ESP Curve Dynamic Assist)
- Chassis: Comfort chassis
- Electric windows (4-way)
- electric parking brake
- Windscreen laminated glass
- Velour floor mats
- Luggage net on driver and passenger seatbacks
- Transmission: 8G-DCT dual-clutch automatic transmission, 8-speed
- Halogen headlights including integrated LED daytime running lights
- Illuminated glove box
- Rear window wiper with intermittent function (and automatic activation when reversing)
- Interior headliner fabric crystal grey
- KEYLESS-GO start function
- Climate: THERMATIC automatic climate control (1-zone climate control - automatically controlled air distribution - recirculation function - tunnel mode in conjunction with navigation system - fine dust filter)
- Headrests 5-way adjustable (for driver and front passenger in height and longitudinal direction, as well as height-adjustable and middle one retractable in the rear)
- Steering wheel: Multifunction sports steering wheel in leather (The elegant leather covering makes the multifunction sports steering wheel even more premium, turning it into a highlight of the interior. As a driver, you benefit in two ways: What looks good must also feel good. Among other things, the touch control buttons on the left and right operate a variety of functions, from navigation and telephony to entertainment. Last but not least, you can set the speed and distance control: Everything under control without taking your hands off the steering wheel.)
- Adaptive brake light flashing
- Airbag for driver and front passenger
- Airbag: Sidebag for driver and front passenger (combined thorax/pelvisbag)
- Active Lane Keeping Assist
- Traction control (ASR)
- Automatic passenger airbag deactivation
- Heated exterior mirrors on the left and right, electrically adjustable from the inside (with aspherically curved mirror glass and integrated turn signal light)
- Diesel particulate filter
- Tachometer
- DYNAMIC SELECT (DYNAMIC SELECT rocker switch in the center console for selecting four different driving programs: ECO, Comfort, Sport and Individual - the driving programs affect the engine, transmission, steering, ECO start/stop function, climate control and, depending on the equipment/model, the suspension (with adjustable damping) - additional off-road driving program, adjustable via DYNAMIC SELECT, which adapts the power delivery and ABS control for light off-road terrain, only in conjunction with the Off-Road Engineering Package (430))
- Speed Limit Assist (The Speed Limit Assist makes it easy for you to comply with the regulations and avoid unnecessary speeding tickets. The system shows what is permitted: It can detect the current speed limit via the camera and display it in the instrument cluster. Additional restrictive signs for special weather conditions such as wet conditions are also detected.)
- Heated rear window with timer
- ISOFIX child seat anchorages with Top Tether in the rear
- Mechanical child safety lock (in the rear doors and electric for the rear window regulators)
- Communication module (LTE) for the use of Mercedes me connect services (communication module with permanently installed SIM card of the mobile communications standard LTE - two mobile communications antennas)
- Cargo area cover
- Steering column mechanically adjustable in height and length
- Steering: Parameter steering (with speed-dependent power steering)
- Mercedes-Benz emergency call system
- Navigation accessories: Extended MBUX functions (personalization (profiles) and prediction functions - LINGUATRONIC with natural language understanding - activation via "Hey Mercedes" - Wi-Fi hotspot - internet radio)
- Package: Non-smoking (incl. 12V socket and storage compartment at the front)
- Package: Seating comfort (height adjustment for passenger seat - seat cushion tilt adjustment for driver and passenger seats - seat cushion depth adjustment for driver and passenger seats)
- Upholstery: ARTICO leatherette/fabric



- Package: Light and Sight Package (Overhead control unit "4 light stones" (including glasses compartment) - Interior light/reading light rear in mounting plate (rear/left/right) - Touchpad lighting (front) - Reading lights (front/left/right), console ambient light - Make-up lights (front/left/right) - Signal and ambient light - Exit signal light (front/left/right) - Handle recess/pull-out handle lighting (front/rear/left/right) - Footwell lighting (front/left/right) - Cupholder/storage compartment lighting - Spontaneous storage compartment lighting)
 - Radio accessories: Digital radio
 - Radio accessories: Touchpad
 - Rain and light sensor
 - Tire pressure monitoring system (continuously monitors the inflation pressure of all four tires)
 - Remote Services Plus (The Remote Services Plus package transforms mobility into a new experience, offering greater comfort and safety. Status queries provide information about the remaining range. You can remotely control certain functions and locate your vehicle. Services such as maintenance management coordinate service appointments, saving you valuable time.)
 - Seats: Comfort seats (The comfort seat offers excellent long-distance comfort and comprehensive adjustments in length and height. You can also adjust the seat cushion angle and even extend it. The selection of upholstery and optional comfort features such as seat climate control or multi-contour seats is also impressive.)
 - High-visibility vest for drivers
 - Electronic immobilizer (including locking system with radio remote control in the electronic key in chrome look, optical locking feedback and emergency opening (approved by AZT and TÜV))
 - Central locking (with interior switch, automatic locking (can be deactivated) and crash sensor with emergency opening)
- Radio: MBUX multimedia system (instrument display with 17.78 cm diagonal - media display with 17.78 cm diagonal and touch function - touch control buttons on the steering wheel - radio - USB interface in the center console under the armrest - Bluetooth telephony with contact transfer and audio streaming of music files - display of vehicle functions (driver assistance systems, driving programs and vehicle settings) - favorites storage - smartphone-related voice control - activated by long press on the voice button on the steering wheel)
 - Wheels: 43.2 cm (17") alloy wheels (215/65 R 17 on 6.5 J x 17 ET 44)
 - Service interval indicator ASSYST
 - GLA-Class seat belts (3-point seat belts including mechanical belt height adjustment, pyrotechnic retractor tensioning and belt force limitation, and electrically reversible belt retractor tensioner)
 - Seats: Rear seat backrests foldable (40/20/40 split)
 - 12V power outlet in center console
 - Cruise control (Drive relaxed and fuel-efficiently, especially on longer journeys. Simply select your desired speed and your vehicle will regulate it. In addition to the cruising speed, the speed limiter helps you maintain a maximum speed. This increases road safety and protects you from expensive speeding tickets.)
 - Heat-insulating glass, green all around (rear window single-pane safety glass (ESG))



Extra equipment

- LED High Performance headlights (low beam in LED projection technology - high beam with LED reflector technology - daytime running lights, position lights and direction indicators in LED technology - automatic adjustment of the light intensity of the rear lights to the surroundings)
- Package: Cargo area (chrome-look loading sill protector - 12V socket - reversible mat - nets on left and right sides - storage compartment under left net - net on boot floor (not for plug-in hybrid) - tension straps on left and right sides)
- Package: MBUX High-End Package (Hard drive navigation - Smartphone integration - Wireless charging system for mobile devices - Preparation for digital key handover - Connectivity package navigation - Central Media Display 10.25" - Fully digital instrument display with high-resolution 10.25" display - MBUX Augmented Reality for navigation - Traffic sign assistant - Preparation for live traffic information)
- Pre-installation for digital key handover (Share your vehicle with friends and family members more easily than ever before – no matter where you are. You retain full control and decide conveniently via app whether you consent to its use. You can also unlock your vehicle remotely via the mobile application. Only then will a stored key be activated. Service is free of charge for 3 years from activation.)
- 17" alloy wheel set (complete winter wheels)
- Cargo net (This feature protects you from loose items in the luggage compartment. The cargo net is very easy to use. You can attach or remove it in just a few steps.)
- Heated windshield washer system
- Package: Business (Hard drive navigation - Smartphone integration - Traffic sign assistant - Preparation for digital key handover - Connectivity package navigation - Seat heating for driver and front passenger - Parking assistant with PARKTRONIC - Preparation for live traffic information)
- Package: Parking package with reversing camera (Active Parking Assist with PARKTRONIC)
- Paint finish: Metallic (according to sample card)
- Phone accessories: Wireless charging system for mobile devices (in the off-the-shelf section)
- Storage compartment in center console with roller blind (The roller blind for the storage compartment in the center console offers you an elegant privacy screen made of high-quality material. This looks good, the interior appears even tidier, and everything important is within easy reach. Typical everyday items such as a smartphone, wallet, or various keys fit into the practical storage compartment.)
- TIREFIT with tire inflation compressor
- Type designation removed from luggage compartment lid

Brief expert findings

Documents submitted	At the time of the inspection, the vehicle registration certificate Part 2 (title) was available, but the vehicle registration certificate Part 1 (document) was not. (Copy)
VIN comparison	The vehicle identification number (VIN) was read from the vehicle and its conformity with the submitted documents was confirmed by the undersigned during the inspection.
Inspection	The inspection conditions were sufficient for the assessment of the vehicle. No lifting equipment or pit was available for inspecting the vehicle. Therefore, inspection of the vehicle's underside was only possible to a limited extent.
Test drive	No test drive/shunting maneuver was carried out during the inspection of the vehicle.
Engine function test	An engine test run was performed.

Value reducing factors

No.	Component group	Description
1	Misc.	Main inspection - No evidence - No deduction

Repainting

No.	Repainting
1	Door - rear right side, Door - front right side, Professionally carried out, Invoice of repair done Non-existent

Paint coat thickness measurement

Door - rear right side	256 µm	Door - front right side	198 µm
------------------------	--------	-------------------------	--------



Order/Scope of Order

An order was placed to prepare a sales report for the described vehicle. This report includes the following:

- Description of key vehicle information
- Documentation of equipment features
(Delivery by third-party service providers)
- Documentation of damage, defects, missing parts
- Documentation of prior damage, unrepaired prior damage, repainting
- A brief visual or functional inspection of the equipment details, if possible.
(Functional testing of driver assistance systems is not included in the scope of services!)
- a photographic documentation of the vehicle

Basis for the order

This product is based on the guidelines for vehicle returns and valuations published by Alphabet Fleet GmbH. The expert makes the specific findings in each individual case objectively, within the framework of the prescribed standards, based on their own expertise.

The vehicle inspection takes place in a fully assembled, unassembled state.

Damage or defects that can only be detected during disassembly/diagnostic work or through further investigation remain within the realm of prognostic risk. An increased risk exists due to concealed defects caused by fraudulent misrepresentation and which were not identifiable by the expert.

Damage or defects resulting from normal use or wear and tear of the vehicle will be accepted in accordance with the applicable standard.

There was no explicit identification or monetary consideration of the expected features within the product.

Features which, in their nature and extent, slightly exceed normal use but do not constitute unacceptable damage, will be documented and indicated as signs of wear, if applicable.

Damage or defects that, according to the applicable standard, can no longer be attributed to normal use or wear and tear are listed under "Value Reducing Factors" in the product description.

Depending on the product specification, a monetary ID can be provided. If this takes place, the costs can be 100% d or pro rata depending on the vehicle's age and mileage.

Previous damages

No apparent prior damage that had been repaired could be found on the vehicle.

Comments

- Die Unterbodenbesichtigung war nur ebenerdig & eingeschränkt möglich. Mehrkosten möglich.



Figure 1: Diagonal front (left)



Figure 2: Diagonal front (right)



Figure 3: Diagonal rear (left)



Figure 4: Diagonal rear (right)

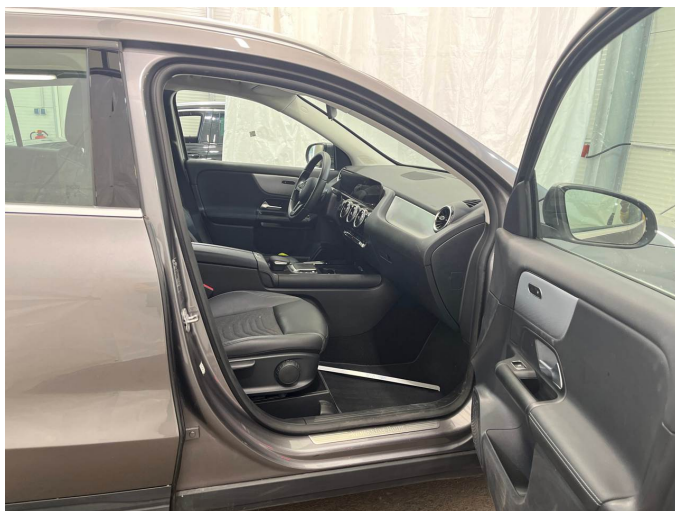


Figure 5: Interior - front



Figure 6: Interior - rear



Figure 7: Instrument cluster



Figure 8: Instrument panel



Figure 9: Interior 360° view



Figure 10: Cargo area

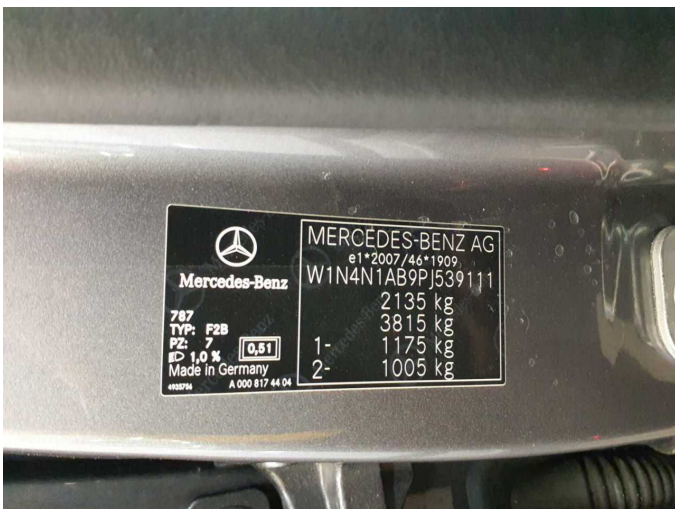


Figure 11: VIN



Figure 12: Mounted tyres

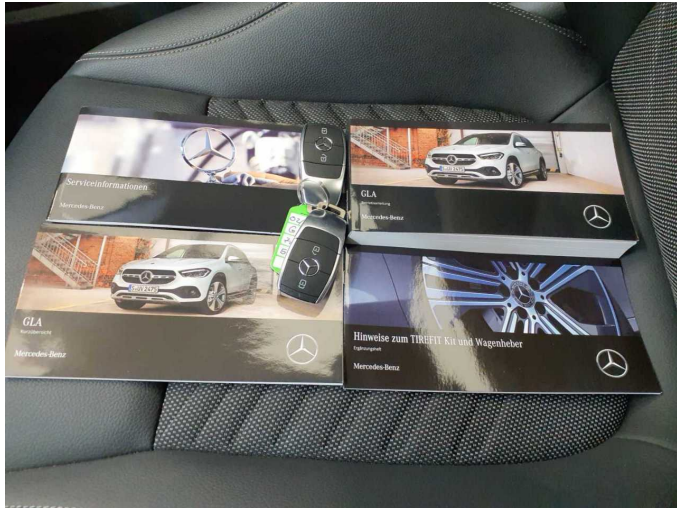


Figure 13: Documents



Figure 14: Additional tyres



Figure 15: Additional tyres



Figure 16: Navigation

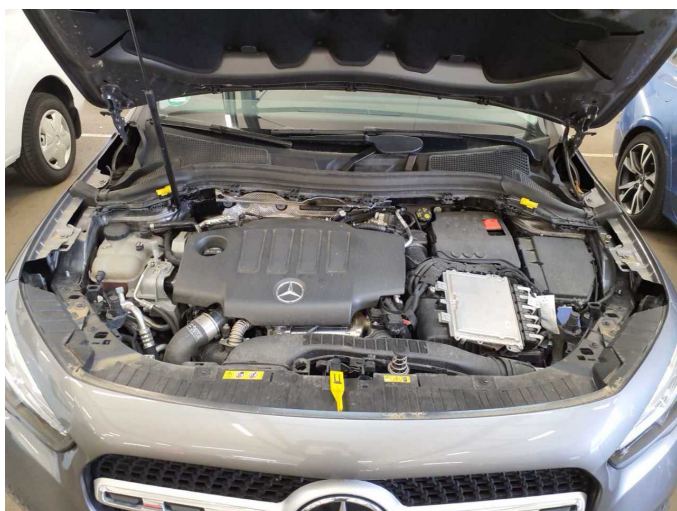


Figure 17: Misc.



Figure 18: Misc.



Figure 19: Misc.



Figure 20: Misc.



Figure 21: Misc.

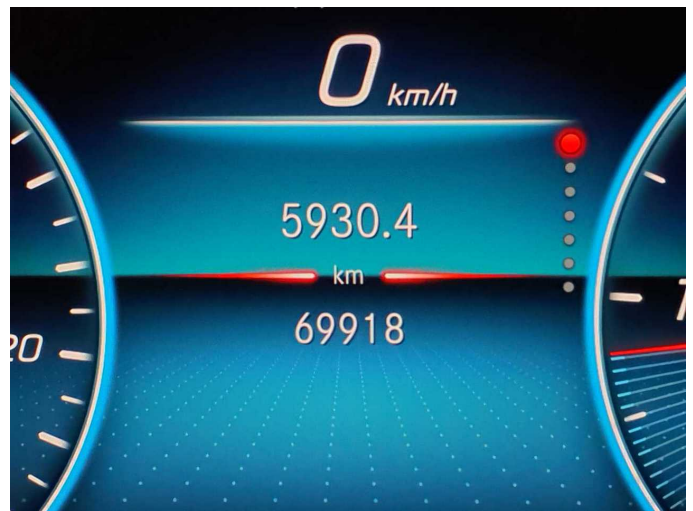


Figure 22: Misc.



Figure 23: Misc.



Figure 24: Misc.



Repainting 1: Door - rear right side, Door - front right side



Repainting 1: Door - rear right side, Door - front right side



Repainting 1: Door - rear right side, Door - front right side



Repainting 1: Door - rear right side, Door - front right side



Wartungshistorie

(gemäß Auftraggeber Informationen)

Fahrgestellnummer: W1N4N1AB9PJ539111

Hersteller / Modell: MERCEDES-BENZ MERCEDES-BENZ GLA 180 d 8G-DCT Style

Datum	KM-Stand	Beschreibung
22.08.2025	49.648	Regelwartungsdienst
13.02.2025	25.392	Regelwartungsdienst