

Expertise

Protocol number: 46295236
Order No. / Reference: 26588406
Inspection date: 30 Jun 2026

Manufacturer: Mercedes-Benz

Model: C 300 d T 9G-TRONIC

VIN: W1KAH0GB0PF102562



Vehicle details

Manufacturer / Type / Model / Equipment

Mercedes-Benz C 300 d T 9G-TRONIC

Vehicle Identification number W1KAH0GB0PF102562

Mileage (Read) 123,546 km

First registration 29 Mar 2023

Number of holders 1

Power / Engine displacement 195 kw / 1,993 ccm

Fuel type / Cylinder Hybrid Diesel / E / 4

Gearbox / Number of gears Automatic / 9

Type of drive Rear drive

Type of vehicle Station wagon

Colour / colour code SPEKTRALLBLAU
METALLIC

Doors / Seats 5 / 5

Upholstery type Cloth

Colour of upholstery Black



Vehicle details

Maintenance booklet / proof	digital proof / complete	Next maintenance in	15,603 km
Last service on / at	03/2026 at 114,149 km		
Key is / should be	2 / 2	FZG documents	ZB#2 (B) was available (copy), ZB#1 (S) was not available.
		Letter No.	GS685569
Previous damage / Accident	Detectable	Repainting	Detectable
Inspection conditions	sufficient	Lifting equipment / pit	No
Test drive	Not performed	Engine function test	Performed
Manufacturer key number/ type code number	2222 / AY1 00149		
Emission standard	EURO6;WLTP;AP;PI/CI; M, N1 I	fine dust sticker	
Permitted total weight	2,400 kg	Empty weight	
Dimensions	4793 x 1900 x 1491		

Tyres

Mounted tyres

#	Tyre size	Type of tyre	Manufacturer	Tread depth
1)	225/45 R18 95Y	Summer tyres on Light alloy	Pirelli	5mm / 5mm
2)	245/40 R18 97Y	Summer tyres on Light alloy	Pirelli	5mm / 5mm

Additional tyres

#	Tyre size	Type of tyre	Manufacturer	Tread depth
1)	225/45 R18 95H	Winter tyres on Light alloy	Goodyear	5mm / 5mm
2)	225/45 R18 95H	Winter tyres on Light alloy	Goodyear	5mm / 5mm

Legend: Tread depth information for the left tire is listed first, for the right tire it is listed second on the axle in the direction of travel.

TÜV SÜD Auto Partner GmbH
Wiesenring 2
04159 Leipzig

Inspection location
Hartmann Fleet Professionals GmbH
Leerenstraße 25
29683 Bad Fallingbommel



Equipment



Standard equipment

- Airbag for driver and front passenger
- Airbag: Center airbag (Additional airbag for increased front occupant protection in the event of a side impact)
- Airbag: Sidebag for driver and front passenger (combined thorax/pelvisbag)
- Airbag: Windowbag for driver and front passenger
- Ambient lighting with 64 light colors
- Left and right exterior mirrors are heated and electrically adjustable
- Brake assist, active
- Roof rails in polished aluminum
- Double cup holder at the front
- EASY-PACK tailgate (with electric operation for opening and closing)
- Electronic Stability Program (ESP) (including Anti-lock Braking System (ABS) and Traction Control System (ASR))
- Speed Limit Assistant (The Speed Limit Assistant detects and displays speed limits.)
- Rear bumper in body color (rear bumper painted in body color with centrally positioned trim panel (wing) in glossy chrome)
- KEYLESS-GO start function
- THERMATIC automatic climate control with 1 climate zone (controlled via the central display or the climate control unit in the center console) - Sensor system for detecting, for example, interior/ exterior temperature, solar radiation, humidity and dew point - Ventilation system consisting of: 3 center vents in the center area and 2 side vents, 2 ventilation openings each in the footwell for driver and front passenger - Fine dust filter for filtering dust, soot and pollen - Dew point sensor, continuous defroster vent under the windshield and 2 fixed defroster vents)
- Steering wheel: Multifunction sports steering wheel in leather (sporty steering wheel in 3-spoke design - leather finish - black grained shift paddles - control via touch panels: left: driver display, cruise control and limiter or active distance assist DISTRONIC; right: MBUX multimedia system (e.g. audio volume and track selection, telephony and navigation), touch sensitivity adjustable via central display)
- Center console in high-gloss black
- Package: Storage (storage compartment with net on the left in the load compartment - double cup holder in the center console for 2 x 750 ml - elastic tension strap on the right in the load compartment - folding box under the load floor - 1 additional bag hook on the right in the load compartment - recess including storage tray on the right in the load compartment - map pockets on the backs of the front seats - reversible mat in the boot floor)
- Airbag: Automatic passenger airbag deactivation (The system automatically deactivates the passenger airbag as soon as it detects a rear-facing child seat or registers that the passenger seat is unoccupied. A transponder in the child seat is not necessary. If it detects that an adult is taking the seat, the airbag is automatically activated, reducing the risk of incorrect operation.)
- Basic services (breakdown management, maintenance management, accident management, telediagnosis, remote vehicle diagnostics)
- Diesel particulate filter
- DYNAMIC SELECT (consisting of driving programs: Comfort, Sport, Eco mode)
- ECO start/stop function
- Electric windows (4-way)
- Velour floor mats
- Transmission: 9-speed automatic, 9G-TRONIC
- rear window wiper
- Heated rear window
- Interior headliner fabric crystal grey
- ISOFIX child seat attachment with top tether in the rear
- Mechanical child safety lock for the rear doors
- Rear headrests (3)
- Front headrests
- Cargo area cover including EASY-PACK safety net
- LED High Performance headlights (The elements of the LED High Performance headlights: - Torch and trifunctional light guide for daytime running lights, position lights and turn signals - Multi-chamber reflector system with 4 individual reflectors each) for low beam and high beam. The elements of the rear lights in LED technology: - All light functions in full LED technology - Tail light - Brake light and parking light - Rear fog light (only on the left side) - Turn signals - Reversing light - 3rd brake light)
- Mercedes-Benz Emergency Call System (can provide a crucial time advantage in an emergency. A communication module with its own SIM card automatically triggers an emergency call upon detection of an accident, which can shorten the time until emergency services arrive. The emergency call can also be triggered manually to organize assistance.)
- Package: AVANTGARDE Exterior (radiator grille with integrated Mercedes star and a chrome-plated louvre, radiator grille frame in chrome - 43.2 cm (17") 5-spoke alloy wheels, high-gloss black paint and gloss coating, 225/50 R 17 on 7 J x 17 ET 44.5 - Dynamic front bumper with centrally positioned trim strip in high-gloss chrome and diamond-pattern air intakes in black. - AGILITY CONTROL suspension with 15 mm lowering and selective damping system. - Strip on the rear side windows in high-gloss black.)
- Upholstery: ARTICO leatherette/fabric



- Package: Interior lighting package (Illuminated glove compartment - Lighting for wireless mobile interface or mobile phone storage - Lighting for the storage compartment in the center console or the double cupholders - Lighting for the storage compartment under the center console armrest - Two vanity lights in front - Two reading lights in the overhead control unit - Two reading lights in the interior mirror in conjunction with mirror parking - Two reading lights and interior light function in the rear grab handles - Lighting for the trunk or cargo area)
- Radio: MBUX (fully digital instrument display with 26 cm (10.25") color LCD display and a resolution of 1440 x 540 pixels - Bluetooth telephony / audio - WLAN hotspot)
- Radio accessories: Central display (High-resolution central display, slightly inclined towards the driver with a 24 cm (9.5") screen diagonal, with MBUX multimedia system - touch display with LCD technology)
- Tire pressure monitoring system (TPMS)
- Remote Services Plus (Communication module - Mercedes me services: remote vehicle status query, programming of auxiliary heating/ventilation, remote door locking and unlocking, sunroof/windows with remote locking and opening including ventilation remote control, personalization, vehicle location, vehicle tracking, geographic vehicle monitoring, parking service monitoring, finder function (Remote Vehicle Finder), notification when exceeding the driving speed, Send2Car function)
- Central locking with remote control

Extra equipment

- Active Distance Assist DISTRONIC (Automatically regulates the distance to the vehicle in front.)
- Paint finish: MANUFAKTUR metallic
- Package: Advanced Comfort Package (Heated seats for driver and front passenger - Seat Comfort Package: - Numerous electric and manual adjustment options for the front seats to adapt to the specific body and comfort requirements of the driver and front passenger - Electro-pneumatic 4-way lumbar support and lateral support adjustment with control element on the seat - Electric seat cushion tilt adjustment - Electric height adjustment - Electric backrest adjustment - Electric seat cushion depth adjustment - Mechanical longitudinal adjustment - Mechanical headrest adjustment)
- Package: Infotainment Package
- Package: Park
- Package: Mirror package (both exterior mirrors electrically folding (button in the driver's door control panel) - interior mirror and exterior mirror on the driver's side automatically dimming continuously - ambient lighting of the exterior mirror to illuminate the entry area with projection of the Mercedes-Benz logo)
- Wheels: Complete winter wheel sets fitted at the factory
- Type designation removed from trunk lid
- Heat and noise insulating acoustic glass (for windshield and front doors)

- Radio: Extended MBUX functions (personalization (profiles) and prediction functions - MBUX voice assistant "LINGUATRONIC" with natural language understanding - activation via Hey Mercedes - learning function of the MBUX voice assistant through connection with a cloud-based online dictionary, Mercedes me connect service free of charge for 3 years from activation - Wi-Fi hotspot - internet radio)
- Radio accessories: Digital radio (DAB)
- Radio accessory: Communication module (LTE) for using Mercedes me connect services (The communication module with a vehicle-integrated, LTE-enabled SIM card offers you added comfort and safety. It continuously connects you to your vehicle – and the vehicle to infrastructure such as the Mercedes-Benz server or the internet. This allows you to use services such as Mercedes me connect Live Traffic Information.)
- Windscreen wipers with rain sensor
- Power steering
- Seats: Rear seat backrests foldable
- Lane Keeping Assist, active
- Cruise control
- High-visibility vest for drivers
- Electronic immobilizer
- Decorative elements in diamond pattern, silver-grey

- KEYLESS-GO (access and driving authorization system)
- Fuel tank with larger capacity
- Paint finish: Metallic
- Package: Assistance (Blind Spot Assist: The system can warn you of side collisions with other road users in your blind spot, especially as soon as you activate the turn signal. Even after driving, the system remains vigilant and warns you if you open the door at the wrong moment. An important safety feature – especially for cyclists.)
- Package: Driving Assistance (Active Distance Assist DISTRONIC, Active Speed Limit Assist, Extended Automatic Restart on Highways, Route-Based Speed Adaptation with Traffic Jam End Function, Active Traffic Jam Assist, Active Steering Assist, Active Lane Change Assist, Active Emergency Stop Assist, Emergency Lane Function, Active Brake Assist with Vehicle, Bicycle and Pedestrian Detection; Intersection Function, Turn Function, Traffic Jam End Emergency Braking Function, Evasive Steering Assist, Active Lane Keeping Assist, Active Blind Spot Assist, Exit Warning Function)
- Wheels: 45.7 cm (18") alloy wheels in a 5-spoke design
- zusätzlich Räder: Winterkomplett Räder M+S 4fach 45,7 cm (18") Leichtmetallräder im Vielspeichen-Design (schwarz lackiert und glanzgedreht mit 225/45 R 18 auf 7, 5 J x 18 ET 40)
- Heat-insulating dark tinted glass



Brief expert findings

Documents submitted	At the time of the inspection, the vehicle registration certificate Part 2 (title) was available, but the vehicle registration certificate Part 1 (document) was not. (Copy)
VIN comparison	The vehicle identification number (VIN) was read from the vehicle and its conformity with the submitted documents was confirmed by the undersigned during the inspection.
Inspection	The inspection conditions were sufficient for the assessment of the vehicle. No lifting equipment or pit was available for inspecting the vehicle. Therefore, inspection of the vehicle's underside was only possible to a limited extent.
Test drive	No test drive/shunting maneuver was carried out during the inspection of the vehicle.
Engine function test	An engine test run was performed.

Value reducing factors

No.	Component group	Description
1	Misc.	Main inspection - No evidence - No deduction
2	Instrument panel	Indicator light (Reifendruck) - on - Perform diagnosis
3	Seat - rear	Back seat - Soiled - Clean
4	Wing mirror - right side	Cap - Scratch(es) - Smart repair
5	2nd wheel set	1 alloy rim - Scratch(es) - Loss in value
6	Wheel / tyres	Tyre - front - Porous / cracked - Replace
7	Indicator - front	Mirror - right side - Scratch(es) - Replace
8	Front axle	Axles / undercarriage (wegen der beschädigten Felgen) - Specify findings - Measure
9	2nd wheel set	2 tyres - Porous / cracked - Replace
10	Wheel / tyres	Alloy rim - rear right side - Scratch(es) - Loss in value
11	Wheel / tyres	Alloy rim - front right side - Scratch(es) - Replace
12	2nd wheel set	1 alloy rim - Scratch(es) - Replace
13	2nd wheel set	1 alloy rim - Scratch(es) - Replace
14	Door - rear left side	Door (Zusätzlich Schachtleiste Kratzer) - Scratch(es) - Paint
15	Rear bumper	Rear bumper - Dent / paintcoat damage - Repair and paint
16	Door - front left side	Door - Scratch(es) - Paint
17	Front bumper	Front bumper - Scratch(es) - Paint
18	Vehicle glazing	Windscreen - Broken / torn - repair according to calculation

Wear and tear

No.	Component group	Description
1	Roof	Roof rail - right side - Scratch(es) - No deduction
2	Bonnet	Bonnet - Stone chips - No deduction
3	Headlight	Headlight - right side - Stone chips - No deduction
4	Headlight	Headlight - left side - Stone chips - No deduction
5	Tail light	Tail lamp - right side - Scratch(es) - No deduction
6	Tail light	Tail lamp - left side - Scratch(es) - No deduction
7	Sill - left side	Trim - Scratch(es) - No deduction
8	Door - rear right side	Door - Dent / paintcoat damage - No deduction

The vehicle shows signs of wear and tear commensurate with its age and use.



Previous damages

No.	Previous damage	Extent of damage (Net)
1	Side right, Professionally repaired	

Repainting

No.	Repainting
1	Roof rail - right side, Mudguard - right side, Side panel - rear right side, Professionally carried out

Paint coat thickness measurement

Roof rail - right side	167 µm	Mudguard - right side	168 µm
Side panel - rear right side	180 µm		

Order/Scope of Order

An order was placed to prepare a sales report for the described vehicle. This report includes the following:

- Description of key vehicle information
- Documentation of equipment features
(*Delivery by third-party service providers*)
- Documentation of damage, defects, missing parts
- Documentation of prior damage, unrepaired prior damage, repainting
- A brief visual or functional inspection of the equipment details, if possible.
(*Functional testing of driver assistance systems is not included in the scope of services!*)
- a photographic documentation of the vehicle

Basis for the order

This product is based on the guidelines for vehicle returns and valuations published by Alphabet Fleet GmbH. The expert makes the specific findings in each individual case objectively, within the framework of the prescribed standards, based on their own expertise.

The vehicle inspection takes place in a fully assembled, unassembled state.

Damage or defects that can only be detected during disassembly/diagnostic work or through further investigation remain within the realm of prognostic risk. An increased risk exists due to concealed defects caused by fraudulent misrepresentation and which were not identifiable by the expert.

Damage or defects resulting from normal use or wear and tear of the vehicle will be accepted in accordance with the applicable standard.

There was no explicit identification or monetary consideration of the expected features within the product.

Features which, in their nature and extent, slightly exceed normal use but do not constitute unacceptable damage, will be documented and indicated as signs of wear, if applicable.

Damage or defects that, according to the applicable standard, can no longer be attributed to normal use or wear and tear are listed under "Value Reducing Factors" in the product description.

Depending on the product specification, a monetary ID can be provided. If this takes place, the costs can be 100% d or pro rata depending on the vehicle's age and mileage.

Previous damages

Professionally repaired previous damages were found at the vehicle.



Figure 1: Diagonal front (left)



Figure 2: Diagonal front (right)



Figure 3: Diagonal rear (left)



Figure 4: Diagonal rear (right)



Figure 5: Interior - front



Figure 6: Interior - rear



Figure 7: Instrument cluster



Figure 8: Instrument panel



Figure 9: Interior 360° view



Figure 10: Cargo area



Figure 11: VIN



Figure 12: Mounted tyres

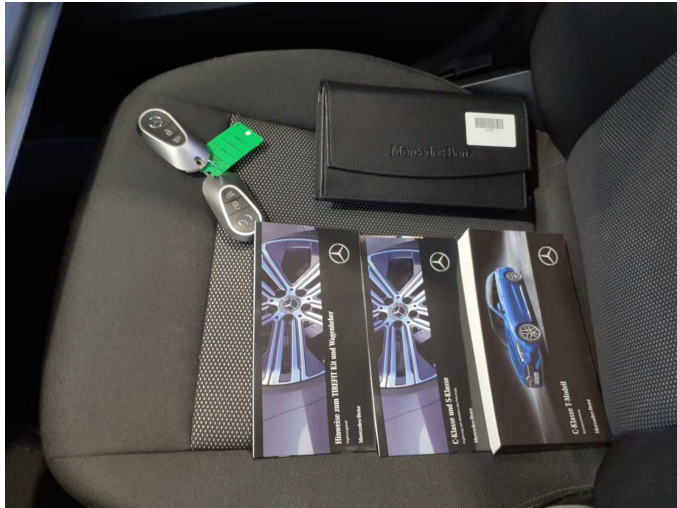


Figure 13: Documents



Figure 14: Additional tyres

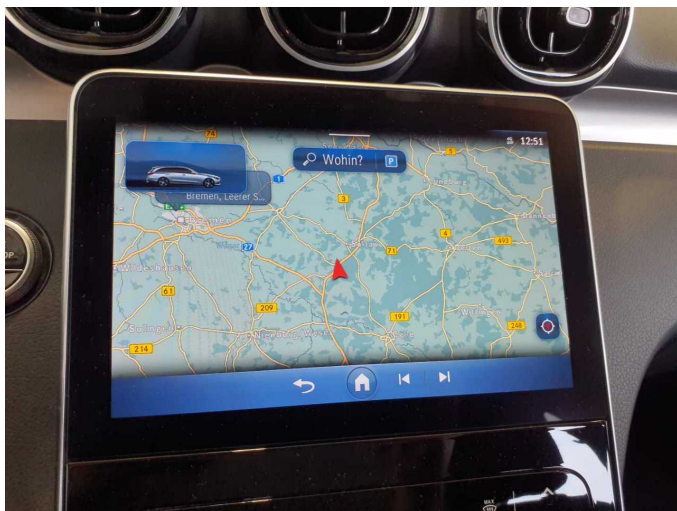


Figure 15: Navigation

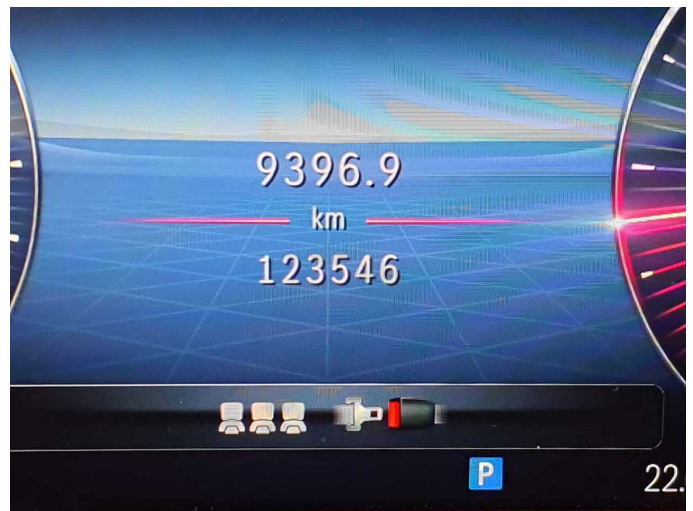


Figure 16: Misc.

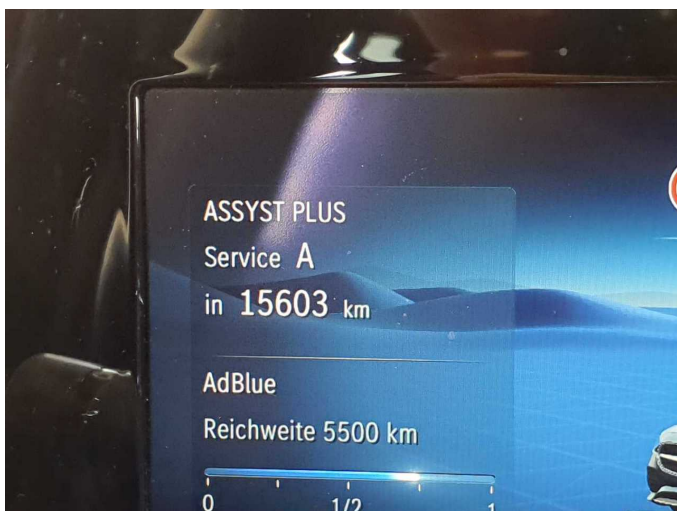


Figure 17: Misc.

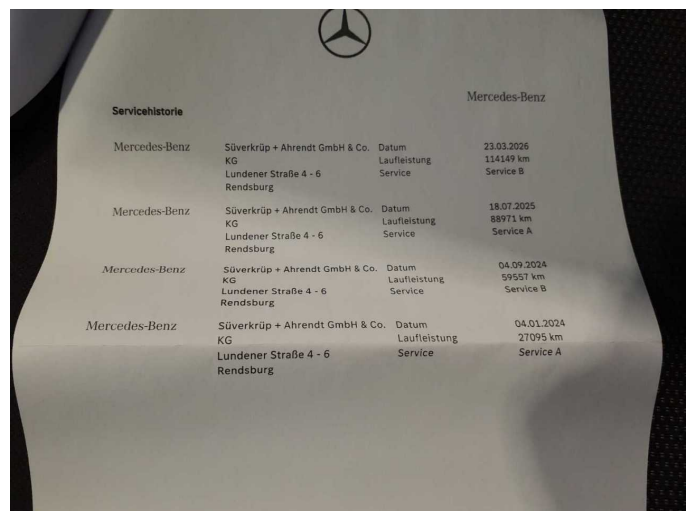


Figure 18: Misc.

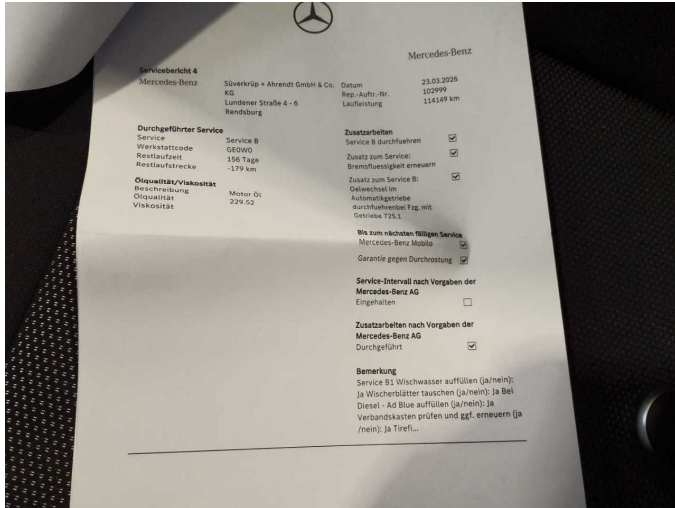


Figure 19: Misc.

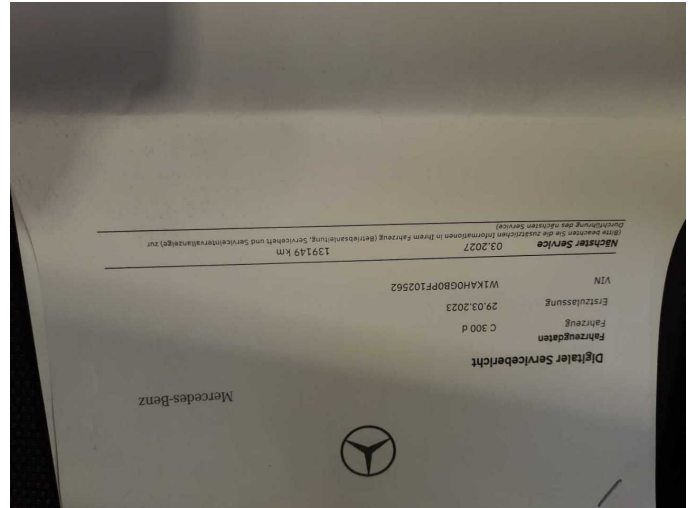


Figure 20: Misc.



Figure 21: Misc.



Figure 22: Misc.



Figure 23: Misc.



Figure 24: Misc.



Figure 25: Misc.



Figure 26: Misc.



Figure 27: Misc.



Figure 28: Misc.



Figure 29: Misc.



Damage 2: Instrument panel: Indicator light (Reifendruck) - on - Perform diagnosis



Damage 3: Seat - rear: Back seat - Soiled - Clean



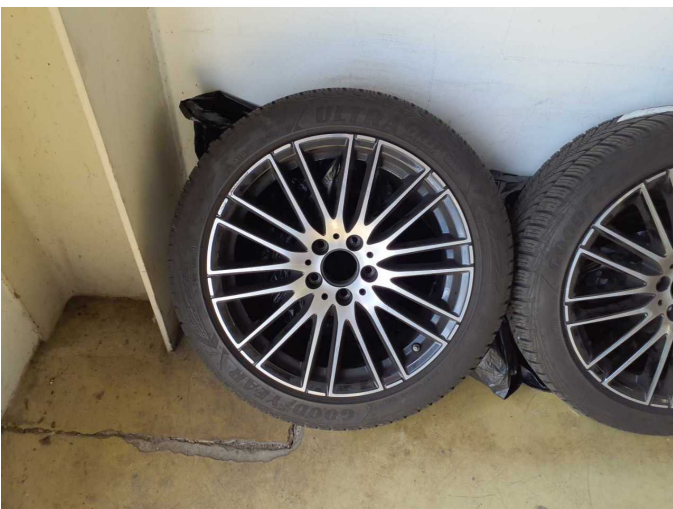
Damage 3: Seat - rear: Back seat - Soiled - Clean



Damage 4: Wing mirror - right side: Cap - Scratch(es) - Smart repair



Damage 4: Wing mirror - right side: Cap - Scratch(es) - Smart repair



Damage 5: 2nd wheel set: 1 alloy rim - Scratch(es) - Loss in value



Damage 5: 2nd wheel set: 1 alloy rim - Scratch(es) - Loss in value



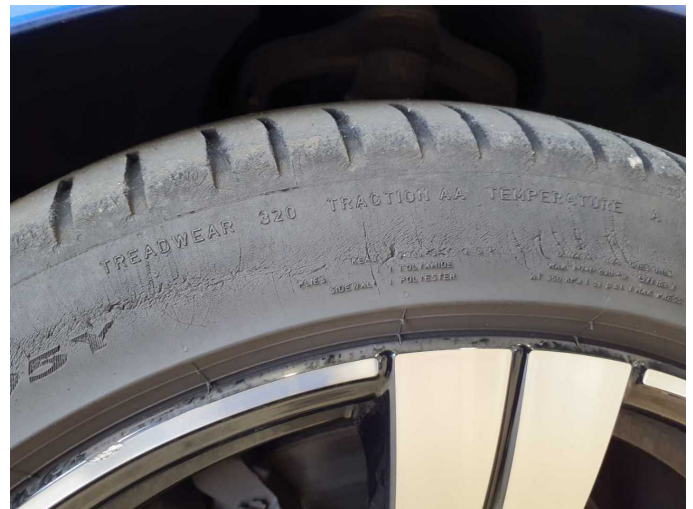
Damage 6: Wheel / tyres: Tyre - front - Porous / cracked - Replace



Damage 6: Wheel / tyres: Tyre - front - Porous / cracked - Replace



Damage 6: Wheel / tyres: Tyre - front - Porous / cracked - Replace



Damage 6: Wheel / tyres: Tyre - front - Porous / cracked - Replace



Damage 6: Wheel / tyres: Tyre - front - Porous / cracked - Replace



Damage 6: Wheel / tyres: Tyre - front - Porous / cracked - Replace



Damage 6: Wheel / tyres: Tyre - front - Porous / cracked - Replace



Damage 7: Indicator - front: Mirror - right side - Scratch(es) - Replace



Damage 7: Indicator - front: Mirror - right side - Scratch(es) - Replace



Damage 9: 2nd wheel set: 2 tyres - Porous / cracked - Replace



Damage 9: 2nd wheel set: 2 tyres - Porous / cracked - Replace



Damage 9: 2nd wheel set: 2 tyres - Porous / cracked - Replace



Damage 10: Wheel / tyres: Alloy rim - rear right side - Scratch(es) - Loss in value



Damage 10: Wheel / tyres: Alloy rim - rear right side - Scratch(es) - Loss in value



Damage 10: Wheel / tyres: Alloy rim - rear right side - Scratch(es) - Loss in value



Damage 10: Wheel / tyres: Alloy rim - rear right side - Scratch(es) - Loss in value



Damage 10: Wheel / tyres: Alloy rim - rear right side - Scratch(es) - Loss in value



Damage 10: Wheel / tyres: Alloy rim - rear right side - Scratch(es) - Loss in value



Damage 11: Wheel / tyres: Alloy rim - front right side - Scratch(es) - Replace



Damage 11: Wheel / tyres: Alloy rim - front right side - Scratch(es) - Replace



Damage 11: Wheel / tyres: Alloy rim - front right side - Scratch(es) - Replace



Damage 11: Wheel / tyres: Alloy rim - front right side - Scratch(es) - Replace



Damage 11: Wheel / tyres: Alloy rim - front right side - Scratch(es) - Replace



Damage 12: 2nd wheel set: 1 alloy rim - Scratch(es) - Replace



Damage 12: 2nd wheel set: 1 alloy rim - Scratch(es) - Replace



Damage 12: 2nd wheel set: 1 alloy rim - Scratch(es) - Replace



Damage 13: 2nd wheel set: 1 alloy rim - Scratch(es) - Replace



Damage 13: 2nd wheel set: 1 alloy rim - Scratch(es) - Replace



Damage 13: 2nd wheel set: 1 alloy rim - Scratch(es) - Replace



Damage 14: Door - rear left side: Door (Zusätzlich Schachtleiste Kratzer) - Scratch(es) - Paint



Damage 14: Door - rear left side: Door (Zusätzlich Schachtleiste Kratzer)
- Scratch(es) - Paint



Damage 14: Door - rear left side: Door (Zusätzlich Schachtleiste Kratzer)
- Scratch(es) - Paint



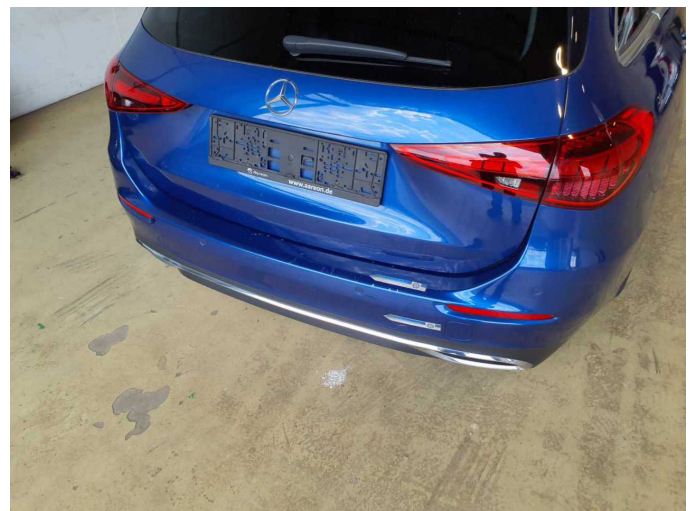
Damage 15: Rear bumper: Rear bumper - Dent / paintcoat damage -
Repair and paint



Damage 15: Rear bumper: Rear bumper - Dent / paintcoat damage -
Repair and paint



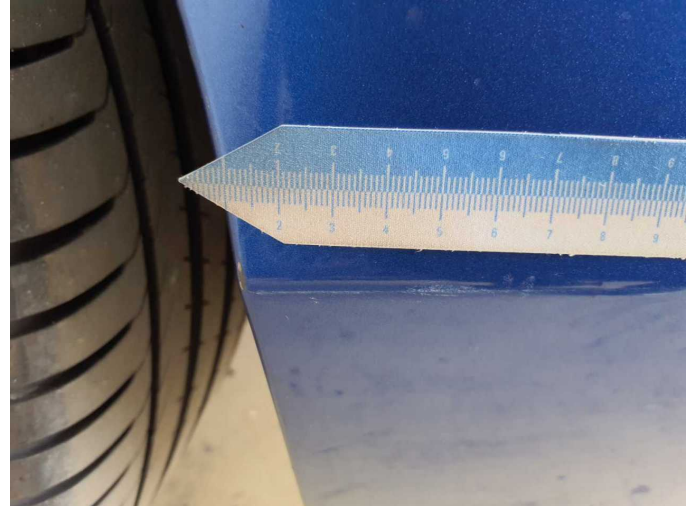
Damage 15: Rear bumper: Rear bumper - Dent / paintcoat damage -
Repair and paint



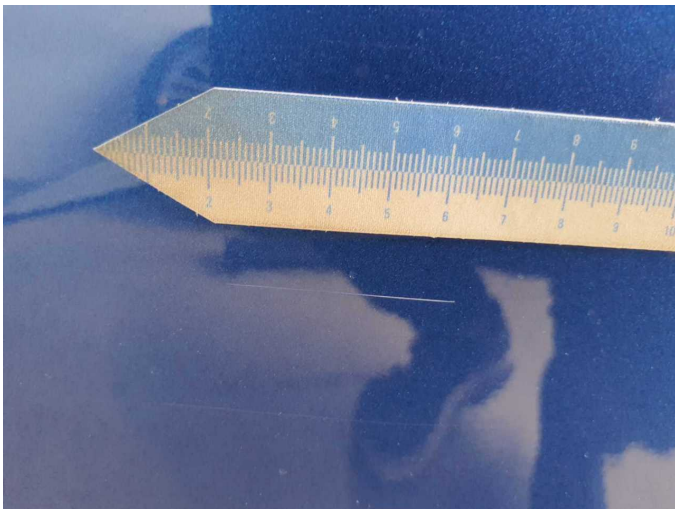
Damage 15: Rear bumper: Rear bumper - Dent / paintcoat damage -
Repair and paint



Damage 15: Rear bumper: Rear bumper - Dent / paintcoat damage - Repair and paint



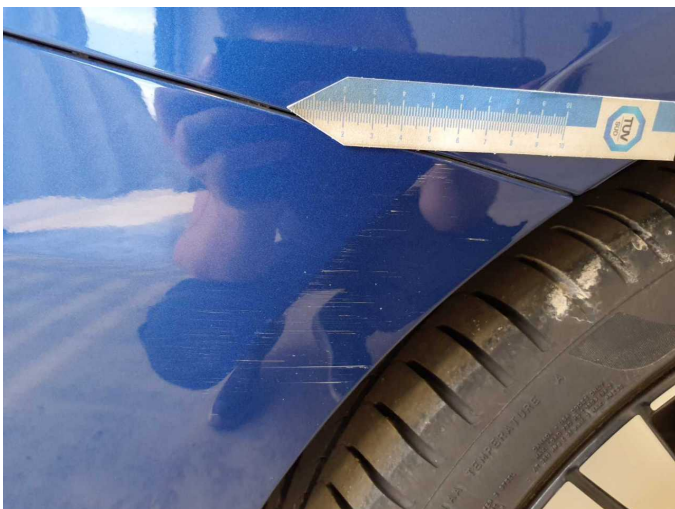
Damage 15: Rear bumper: Rear bumper - Dent / paintcoat damage - Repair and paint



Damage 15: Rear bumper: Rear bumper - Dent / paintcoat damage - Repair and paint



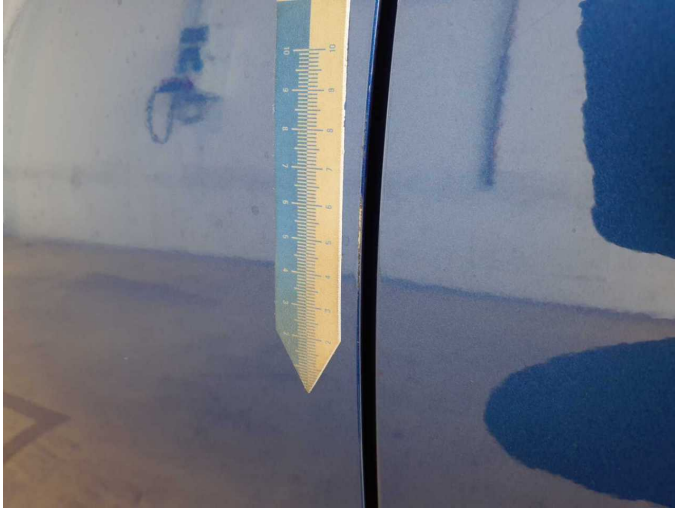
Damage 15: Rear bumper: Rear bumper - Dent / paintcoat damage - Repair and paint



Damage 15: Rear bumper: Rear bumper - Dent / paintcoat damage - Repair and paint



Damage 16: Door - front left side: Door - Scratch(es) - Paint



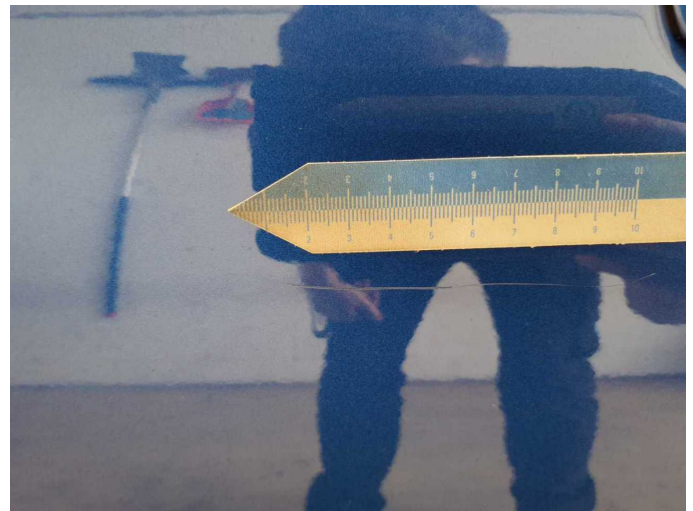
Damage 16: Door - front left side: Door - Scratch(es) - Paint



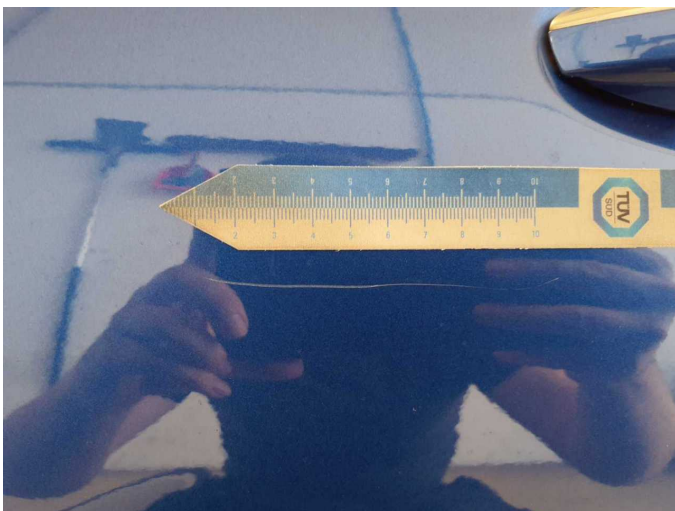
Damage 16: Door - front left side: Door - Scratch(es) - Paint



Damage 16: Door - front left side: Door - Scratch(es) - Paint



Damage 16: Door - front left side: Door - Scratch(es) - Paint



Damage 16: Door - front left side: Door - Scratch(es) - Paint



Damage 17: Front bumper: Front bumper - Scratch(es) - Paint



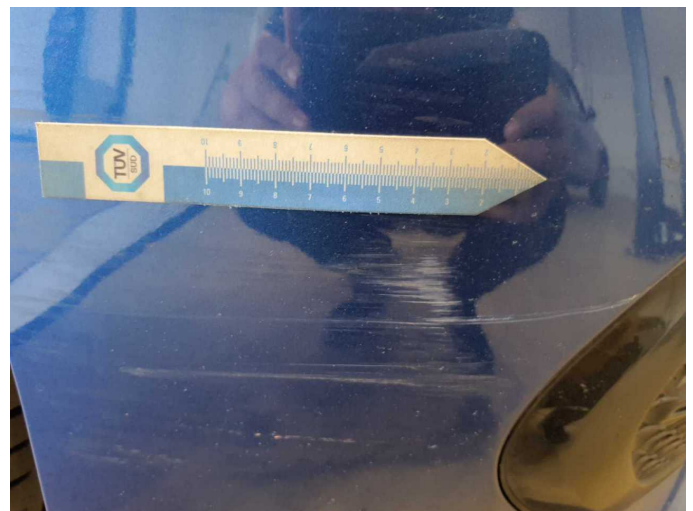
Damage 17: Front bumper: Front bumper - Scratch(es) - Paint



Damage 17: Front bumper: Front bumper - Scratch(es) - Paint



Damage 17: Front bumper: Front bumper - Scratch(es) - Paint



Damage 17: Front bumper: Front bumper - Scratch(es) - Paint



Damage 18: Vehicle glazing: Windscreen - Broken / torn - repair according to calculation



Damage 18: Vehicle glazing: Windscreen - Broken / torn - repair according to calculation



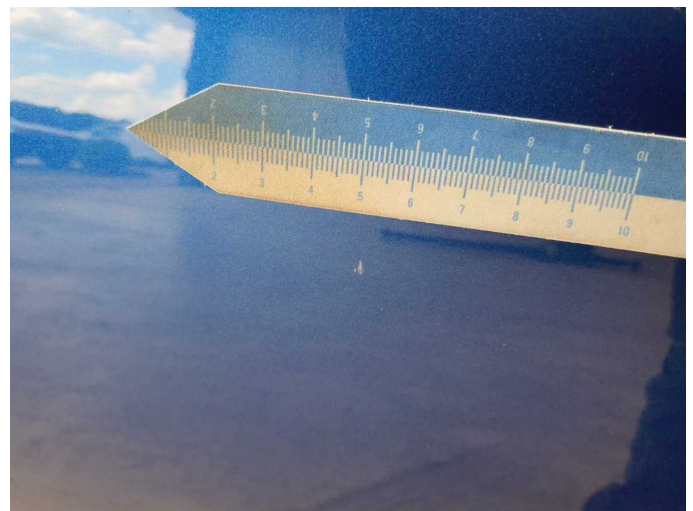
Wear and tear 8: Door - rear right side: Door - Dent / paintcoat damage - No deduction



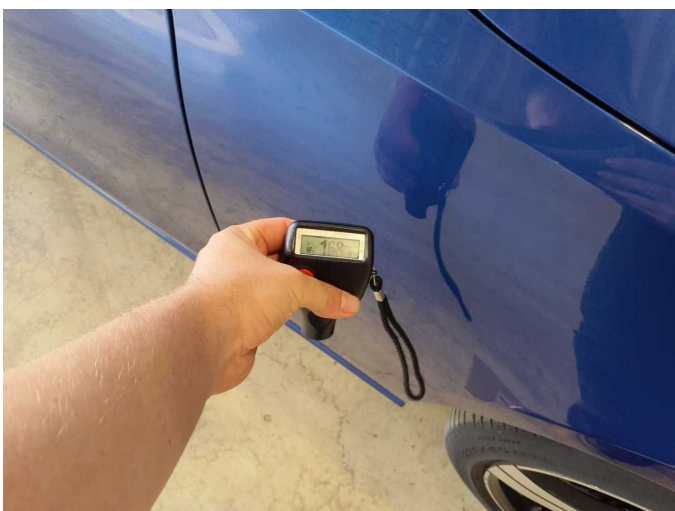
Wear and tear 8: Door - rear right side: Door - Dent / paintcoat damage - No deduction



Wear and tear 8: Door - rear right side: Door - Dent / paintcoat damage - No deduction



Wear and tear 8: Door - rear right side: Door - Dent / paintcoat damage - No deduction



Repainting 1: Roof rail - right side, Mudguard - right side, Side panel - rear right side



Repainting 1: Roof rail - right side, Mudguard - right side, Side panel - rear right side



Repainting 1: Roof rail - right side, Mudguard - right side, Side panel - rear right side



Repainting 1: Roof rail - right side, Mudguard - right side, Side panel - rear right side



Repainting 1: Roof rail - right side, Mudguard - right side, Side panel - rear right side



Repainting 1: Roof rail - right side, Mudguard - right side, Side panel - rear right side