

## Expertise

Protocol number: 46047230  
Order No. / Reference: 26482677  
Inspection date: 19 Jun 2026

Manufacturer: Skoda

Model: Kodiaq 2.0 TDI DSG Selection

VIN: TMBJJ9PSXST014888



### Vehicle details

#### Manufacturer / Type / Model / Equipment

Skoda Kodiaq 2.0 TDI DSG Selection

**Vehicle Identification number** TMBJJ9PSXST014888

**Mileage (Read)** 37,912 km

**First registration** 9 Oct 2024

**Number of holders** 1

**Power / Engine displacement** 110 kw / 1,968 ccm

**Fuel type / Cylinder** Diesel / 4

**Gearbox / Number of gears** Automatic / 7

**Type of drive** Front drive

**Type of vehicle** SUV

**Colour / colour code** Graphite Grau Metallic (F7C)

**Doors / Seats** 5 / 5

**Upholstery type** Leather

**Colour of upholstery** Black



## Vehicle details

<b>Maintenance booklet / proof</b>	digital proof / complete	<b>Next maintenance in</b>	10,700 km
<b>Last service on / at</b>	10/2025 at 25,670 km		
<b>Key is / should be</b>	2 / 2	<b>FZG documents</b>	ZB#2 (B) was available (copy), ZB#1 (S) was not available.
		<b>Letter No.</b>	HG809643
<b>Previous damage / Accident</b>	None detectable	<b>Repainting</b>	None detectable
<b>Inspection conditions</b>	sufficient	<b>Lifting equipment / pit</b>	yes
<b>Test drive</b>	Not performed	<b>Engine function test</b>	Performed
<b>Manufacturer key number/ type code number</b>	8004 / AYG 00211		
<b>Emission standard</b>	EURO6;WLTP;EA;PI/CI;M, N1, N2	<b>fine dust sticker</b>	
<b>Permitted total weight</b>	2,230 kg	<b>Empty weight</b>	

## Tyres

### Mounted tyres

#	Tyre size	Type of tyre	Manufacturer	Tread depth
1)	235/55 R18 100V	Summer tyres on Light alloy	Continental	4mm / 4mm
2)	235/55 R18 100V	Summer tyres on Light alloy	Continental	5mm / 5mm

### Additional tyres

#	Tyre size	Type of tyre	Manufacturer	Tread depth
1)	235/55 R18 104H	Winter tyres on Light alloy	Pirelli	5mm / 5mm
2)	235/55 R18 104H	Winter tyres on Light alloy	Pirelli	7mm / 7mm

### Replacement

Typ	Tyre size	Type of tyre	Manufacturer	Tread depth
E	145/85 R18 103M	Summer tyres on Steel	Sonstige	4 mm

**Legend: Tread depth information for the left tire is listed first, for the right tire it is listed second on the axle in the direction of travel.**



## Equipment

### Standard equipment

- Turning assistant including evasive steering support
- Airbag, driver and passenger
- Airbag, front side airbags
- Trailer hitch preparation
- Traction control (ASR)
- Electrically adjustable, heated and folding exterior mirrors
- Hill start assist
- Glasses compartment in the headliner
- Diesel particulate filter
- Digital rotary controls (Smart Dials)
- Electronic parking brake including auto-hold function
- ESC Electronic Stability Control
- Front radar assistant including city emergency braking function with pedestrian and cyclist detection
- Heated rear window
- Automatic interior mirror dimming
- Interior Design Selection Loft
- Isofix anchorage on the outer rear seats including top tether
- Front and rear headrests are height-adjustable.
- Paint finish: Uni Energy Blue
- LED headlights with driving light assistant
- Rear center armrest with cup holders
- Front center armrest including cup holder
- Multi-collision brake
- Phonebox with inductive fast charging function for 2 smartphones including cooling
- Radio accessories: 2 x USB-C ports in the front and 2 x USB-C charging ports in the rear.
- Rain sensor and driving light assistant (Easy Light Assist)
- Tire pressure monitoring
- Rear view camera
- Seat belts
- Seats: Remote release of the rear seat backrests (2nd row) in the boot
- Skoda Care Connect
- Sun visors with illuminated make-up mirror on driver and passenger side
- 12V power outlet in the luggage compartment and on the back of the center console
- Textile floor mats
- Traffic sign recognition
- Preparation for an alcohol test
- Central locking including remote control integrated into the key
- Airbag, center airbag front
- Airbag, front and rear head airbags
- Ambient lighting inside and logo projector outside
- Anti-lock braking system (ABS)
- Attention and fatigue detection
- Exterior mirrors and door handles painted in body color
- Hydraulic brake assist
- Roof rails, black
- Digital Cockpit Plus (10")
- Third brake light
- Electronic transverse differential lock (XDS+)
- Electric windows front and rear
- Transmission: 7-speed dual-clutch transmission (DSG)
- Illuminated glove compartment
- rear window wiper
- Intelligent Speed Assist (ISA)
- Isofix anchorage on the front passenger seat
- Electric child safety lock for the rear doors and windows
- Climatronic air conditioning (3-zone)
- Crossroad Assist
- LED taillights with black strip between the lights
- Steering wheel: Leather steering wheel with multifunction buttons including paddle shifters.
- Engine drag torque control (MSR)
- Front and rear parking sensors with maneuvering brake function
- Radio: Basic infotainment system
- Radio accessories: Wireless SmartLink
- Umbrella compartment in the driver's door
- Tire Mobility Kit
- Wheels: 18" Mazeno Aero alloy wheels, silver polished
- Electromechanical power steering
- Seats: Heated front seats
- Seats: Rear seat backrest split 40:20:40, foldable
- Seats: Front seats are height-adjustable, including manually adjustable lumbar support.
- Lane keeping assistant (Lane Assist)
- Lane change assist (Side Assist) and parking assist, as well as exit warning.
- Pockets on the back of the front seats including smartphone pockets
- Lashing eyes in the luggage compartment
- Immobiliser
- Electric auxiliary heater



### Extra equipment

- Acoustic glazing in the front side windows and Sunset ((rear window and rear side windows dark tinted))
- Luggage net partition
- Paint finish: Metallic
- Steering wheel: Leather steering wheel with multifunction buttons in sport design (with decorative stitching in black - infotainment and driver assistance system operation - height and length adjustable - including shift paddles)
- Package: Driver Assistance (Proactive occupant protection Travel Assist with: - Adaptive Cruise Control ACC (cruise control system deleted) - Adaptive Lane Assist (Lane Assist+) - Traffic Jam and Emergency Assist)
- Package: Infotainment Plus (Navigation system - 13" infotainment display - Display cleaner - Head-up display - Infotainment Online (3-year subscription) - ChatGPT integration)
- Package: Light & Sight Plus (Matrix LED headlights - Dynamic Light Assist - LED taillights with animated turn signals and red crystal structure strip between the lights - Front grille with horizontal light strip (Selection - with Unique Dark Chrome elements))
- Swiveling trailer hitch (with electric release, including trailer stabilization)
- Interior Design Selection Suite Black (Leather/imitation leather seat covers in black, perforated with black stitching - Black imitation leather pad - Grey trim and black door panels - Grey headliner)
- Package: Chrome (gloss black trim strip at the top of the windows - silver anodized roof rails - D-pillar in Unique Dark Chrome - front door sill trims)
- Package: Family (Sun protection roller blind for rear side windows - Door edge protection - Waste bin - Tablet holder - Rear side airbag - Storage box for 2nd row of seats)
- Package: Comfort Plus (KESY, keyless entry and start-stop system - anti-theft alarm system - electric tailgate operation with comfort opening - electrically adjustable front seats with memory function and electrically adjustable lumbar support - Canton sound system - 18" spare wheel - variable load floor)
- Wheels: 18" Soira Aero alloy wheels, anthracite, diamond-cut finish

### Brief expert findings

Documents submitted	At the time of the inspection, the vehicle registration certificate Part 2 (title) was available, but the vehicle registration certificate Part 1 (document) was not. (Copy)
VIN comparison	The vehicle identification number (VIN) was read from the vehicle and its conformity with the submitted documents was confirmed by the undersigned during the inspection.
Inspection	The inspection conditions were sufficient for the assessment of the vehicle. Lifting equipment and/or a pit were available for examining the vehicle.
Test drive	No test drive/shunting maneuver was carried out during the inspection of the vehicle.
Engine function test	An engine test run was performed.

### Value reducing factors

No.	Component group	Description
1	Vehicle glazing	Windscreen (Keine Rissbildung) - Stone chips - No deduction
2	Door - front left side	Door (Kantenschutz schleift) - Malposition - Set / adjust
3	Door - rear right side	Door edge - Scratch(es) - Smart repair
4	Side panel - rear right side	Side panel - Scratch(es) - Smart repair
5	Side panel - rear right side	Sill - Scratch(es) - Smart repair
6	Rear bumper	Rear bumper - Scratched - Smart repair
7	Side panel - rear right side	Wheel well extension (+ Türe HR) - Scratched - Replace



## Wear and tear

No.	Component group	Description
1	Wheel / tyres	Alloy rim - rear left side - Scratch(es) - No deduction
2	Trim / covers	Boot lid - interior trim - Abrasion - No deduction
3	Front bumper	Front bumper - Scratch(es) - No deduction
4	Door - front left side	Door - dent(s) - No deduction
5	Wheel / tyres	Tyre - front right side (produktionsbedingt) - Deformed - No deduction
6	Door - front right side	Door - dent(s) - No deduction

The vehicle shows signs of wear and tear commensurate with its age and use.

## Order/Scope of Order

An order was placed to prepare a sales report for the described vehicle. This report includes the following:

- Description of key vehicle information
- Documentation of equipment features  
(*Delivery by third-party service providers*)
- Documentation of damage, defects, missing parts
- Documentation of prior damage, unrepaired prior damage, repainting
- A brief visual or functional inspection of the equipment details, if possible.  
(*Functional testing of driver assistance systems is not included in the scope of services!*)
- a photographic documentation of the vehicle

## Basis for the order

This product is based on the guidelines for vehicle returns and valuations published by Alphabet Fleet GmbH. The expert makes the specific findings in each individual case objectively, within the framework of the prescribed standards, based on their own expertise.

The vehicle inspection takes place in a fully assembled, unassembled state.

Damage or defects that can only be detected during disassembly/diagnostic work or through further investigation remain within the realm of prognostic risk. An increased risk exists due to concealed defects caused by fraudulent misrepresentation and which were not identifiable by the expert.

Damage or defects resulting from normal use or wear and tear of the vehicle will be accepted in accordance with the applicable standard.

There was no explicit identification or monetary consideration of the expected features within the product.

Features which, in their nature and extent, slightly exceed normal use but do not constitute unacceptable damage, will be documented and indicated as signs of wear, if applicable.

Damage or defects that, according to the applicable standard, can no longer be attributed to normal use or wear and tear are listed under "Value Reducing Factors" in the product description.

Depending on the product specification, a monetary ID can be provided. If this takes place, the costs can be 100% or pro rata depending on the vehicle's age and mileage.

## Previous damages

No apparent prior damage that had been repaired could be found on the vehicle.

## Comments

- Winterradsatz ist kein Bestandteil des Auslieferungsumfangs.



Figure 1: Diagonal front (left)



Figure 2: Diagonal front (right)



Figure 3: Diagonal rear (left)



Figure 4: Diagonal rear (right)



Figure 5: Interior - front



Figure 6: Interior - rear



Figure 7: Instrument cluster



Figure 8: Instrument panel



Figure 9: Interior 360° view



Figure 10: Cargo area



Figure 11: VIN



Figure 12: Mounted tyres



Figure 13: Documents



Figure 14: Additional tyres

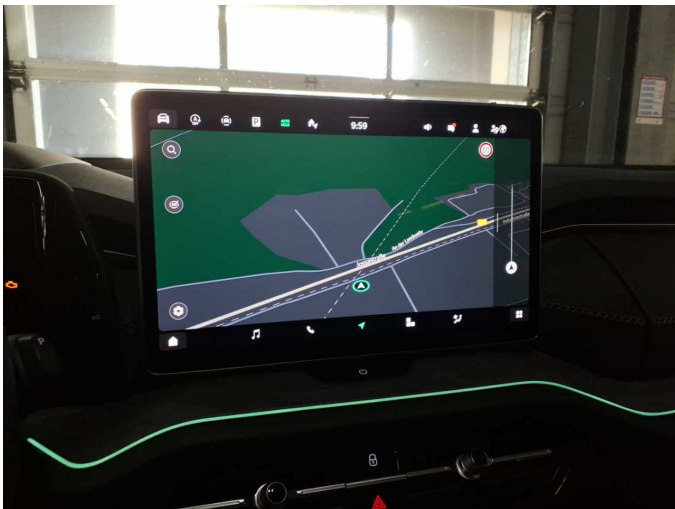


Figure 15: Navigation

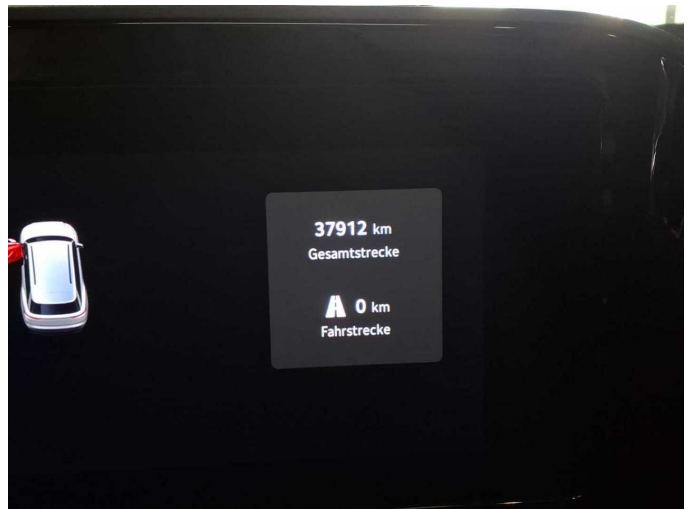


Figure 16: Misc.

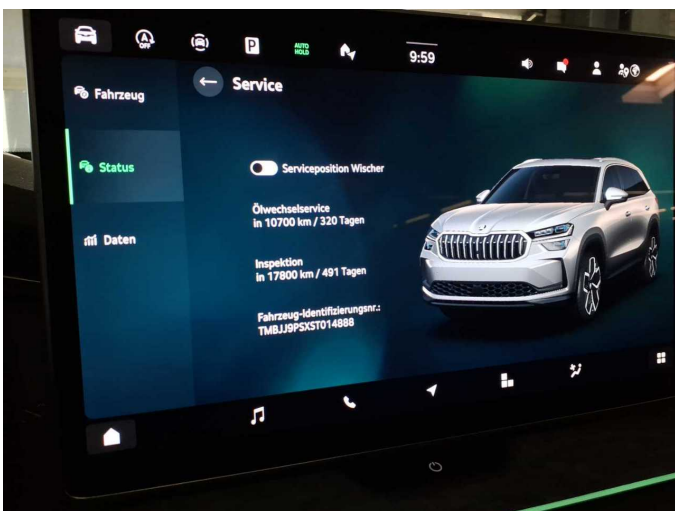


Figure 17: Misc.



Figure 18: Misc.



Figure 19: Misc.



Figure 20: Misc.



Figure 21: Misc.



Figure 22: Misc.

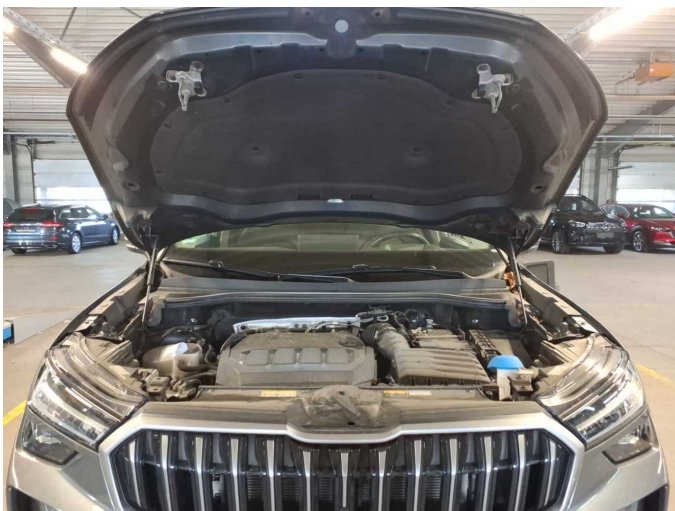


Figure 23: Misc.



Figure 24: Misc.



Figure 25: Misc.



Figure 26: Misc.



Figure 27: Misc.



Figure 28: Misc.



Damage 2: Door - front left side: Door (Kantenschutz schleift) - Malposition - Set / adjust



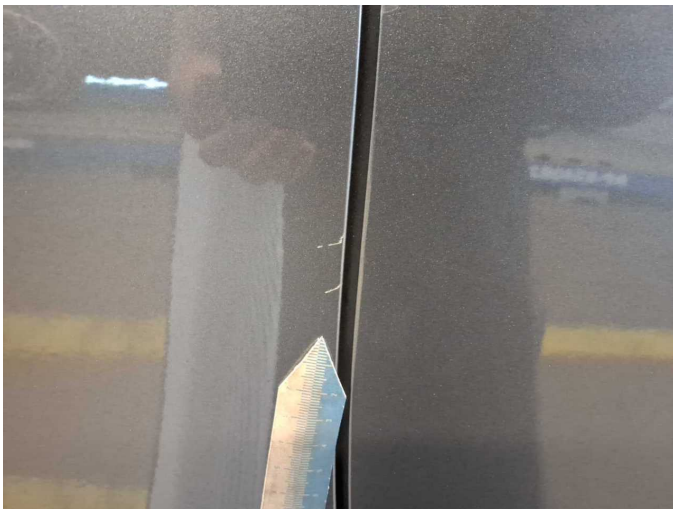
Damage 2: Door - front left side: Door (Kantenschutz schleift) - Malposition - Set / adjust



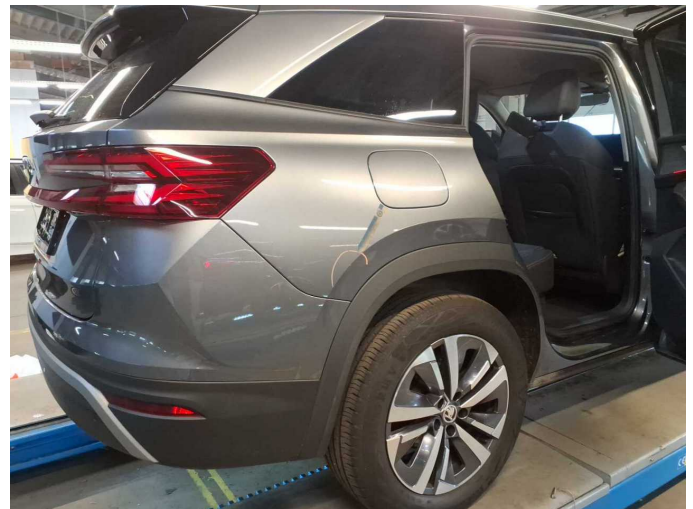
**Damage 2:** Door - front left side: Door (Kantenschutz schleift) - Malposition - Set / adjust



**Damage 3:** Door - rear right side: Door edge - Scratch(es) - Smart repair



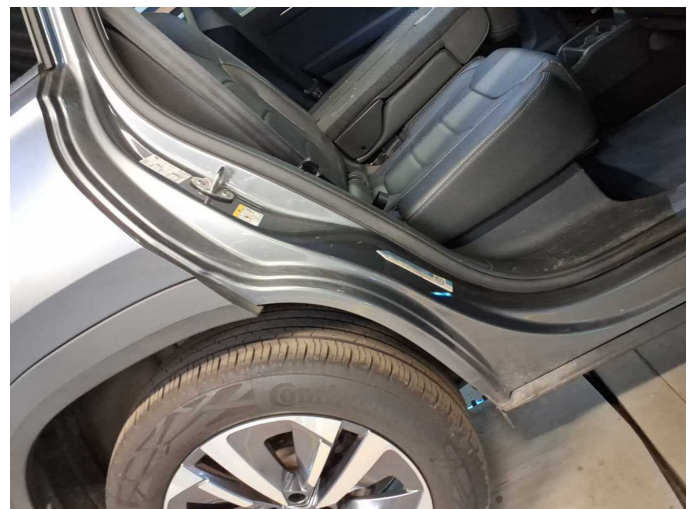
**Damage 3:** Door - rear right side: Door edge - Scratch(es) - Smart repair



**Damage 4:** Side panel - rear right side: Side panel - Scratch(es) - Smart repair



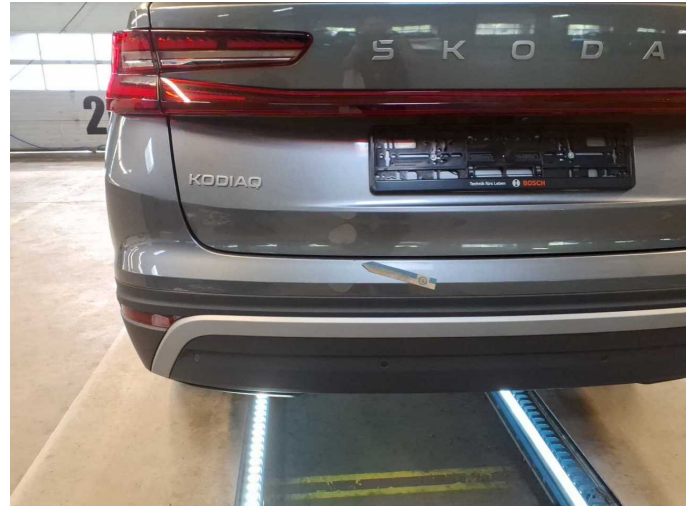
**Damage 4:** Side panel - rear right side: Side panel - Scratch(es) - Smart repair



**Damage 5:** Side panel - rear right side: Sill - Scratch(es) - Smart repair



**Damage 5:** Side panel - rear right side: Sill - Scratch(es) - Smart repair



**Damage 6:** Rear bumper: Rear bumper - Scratched - Smart repair



**Damage 6:** Rear bumper: Rear bumper - Scratched - Smart repair



**Damage 6:** Rear bumper: Rear bumper - Scratched - Smart repair



**Damage 6:** Rear bumper: Rear bumper - Scratched - Smart repair



**Damage 7:** Side panel - rear right side: Wheel well extension (+ Türe HR)  
- Scratched - Replace



**Damage 7:** Side panel - rear right side: Wheel well extension (+ Türe HR)  
- Scratched - Replace



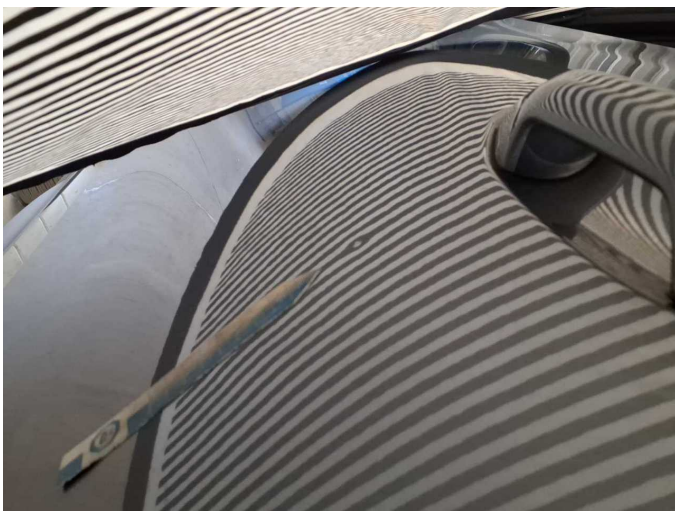
**Damage 7:** Side panel - rear right side: Wheel well extension (+ Türe HR)  
- Scratched - Replace



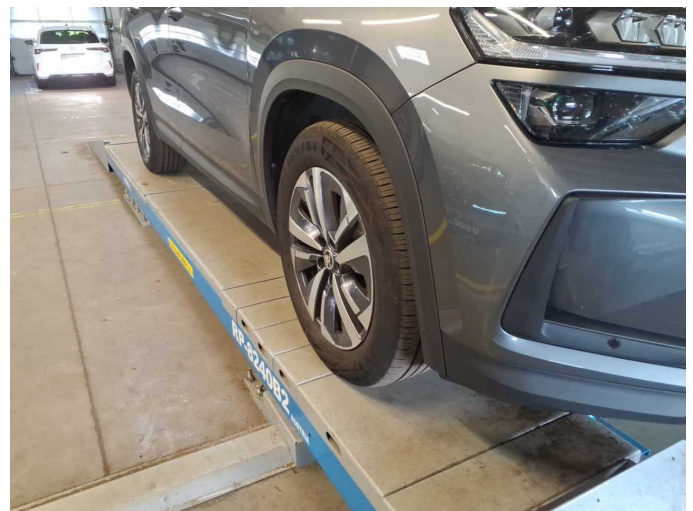
**Damage 7:** Side panel - rear right side: Wheel well extension (+ Türe HR)  
- Scratched - Replace



**Wear and tear 4:** Door - front left side: Door - dent(s) - No deduction



**Wear and tear 4:** Door - front left side: Door - dent(s) - No deduction



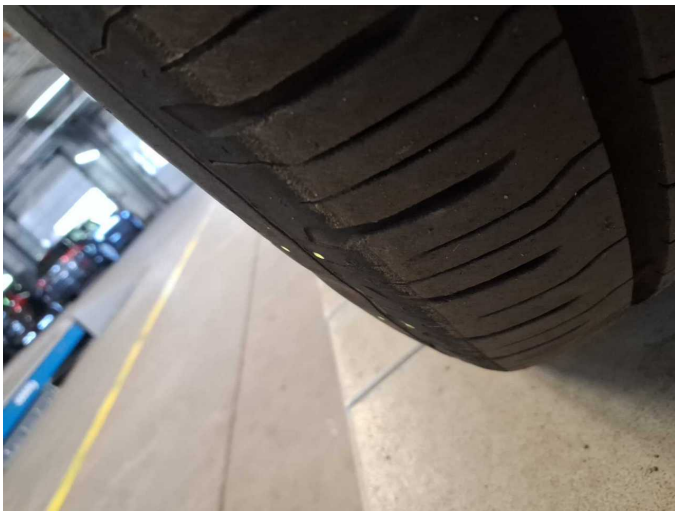
**Wear and tear 5:** Wheel / tyres: Tyre - front right side (produktionsbedingt) - Deformed - No deduction



**Wear and tear 5:** Wheel / tyres: Tyre - front right side (produktionsbedingt) - Deformed - No deduction



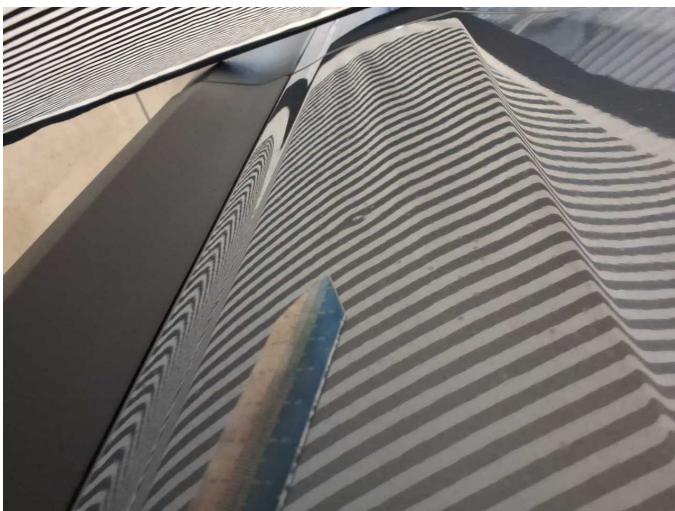
**Wear and tear 5:** Wheel / tyres: Tyre - front right side (produktionsbedingt) - Deformed - No deduction



**Wear and tear 5:** Wheel / tyres: Tyre - front right side (produktionsbedingt) - Deformed - No deduction



**Wear and tear 6:** Door - front right side: Door - dent(s) - No deduction



**Wear and tear 6:** Door - front right side: Door - dent(s) - No deduction



# Wartungshistorie

(gemäß Auftraggeber Informationen)

Fahrgestellnummer: TMBJJ9PSXST014888

Hersteller / Modell: SKODA SKODA Kodiaq 2.0 TDI DSG Selection

Datum	KM-Stand	Beschreibung
23.10.2025	25.670	Motoröl b. Wartung; Ölfilter ern; Regelwartungsdienst; Wartung Sonstiges