

## Expertise

Protocol number: 45522200  
Order No. / Reference: 26260602  
Inspection date: 13 May 2026

Manufacturer: Ford

Model: Focus Turnier 1.5 EcoBlue Start-Stopp-System Aut. TITANIUM X

VIN: WF0PXXGCHPNA25078



### Vehicle details

#### Manufacturer / Type / Model / Equipment

Ford Focus Turnier 1.5 EcoBlue Start-Stopp-System Aut. TITANIUM X

**Vehicle Identification number** WF0PXXGCHPNA25078

**Mileage (Read)** 132,293 km

**First registration** 20 Jan 2023

**Number of holders** 1

**Next periodical technical inspection** 01/2028

(Report on hand)

**Power / Engine displacement** 85 kw / 1,499 ccm

**Fuel type / Cylinder** Diesel / 4

**Gearbox / Number of gears** Automatic / 8

**Type of drive** Front drive

**Type of vehicle** Station wagon

**Colour / colour code** Frost-Weiß

**Doors / Seats** 5 / 5

**Upholstery type** Cloth

**Colour of upholstery** Anthracite-Black



## Vehicle details

<b>Maintenance booklet / proof</b>	digital proof / complete	<b>Next maintenance in</b>	59 %
<b>Last service on / at</b>	12/2025 at 122,486 km		
<b>Key is / should be</b>	2 / 2	<b>FZG documents</b>	ZB#2 (B) was available (copy), ZB#1 (S) was not available.
		<b>Letter No.</b>	GP499214
<b>Previous damage / Accident</b>	None detectable	<b>Repainting</b>	None detectable
<b>Inspection conditions</b>	sufficient	<b>Lifting equipment / pit</b>	yes
<b>Test drive</b>	Not performed	<b>Engine function test</b>	Performed
<b>Manufacturer key number/ type code number</b>	8566 / BYE 00005		
<b>Emission standard</b>	EURO6;WLTP;AP;PI/CI; M, N1 I	<b>fine dust sticker</b>	
<b>Permitted total weight</b>	2,035 kg	<b>Empty weight</b>	

## Tyres

**Mounted tyres**

#	Tyre size	Type of tyre	Manufacturer	Tread depth
1)	205/60 R16 96H	Winter tires (with run-flat tires) on Light alloy	Pirelli	4mm / 4mm
2)	205/60 R16 96H	Winter tires (with run-flat tires) on Light alloy	Pirelli	5mm / 5mm

**Additional tyres**

#	Tyre size	Type of tyre	Manufacturer	Tread depth
1)	205/60 R16 92V	Summer tyres on Light alloy	Pirelli	3mm / 3mm
2)	205/60 R16 92V	Summer tyres on Light alloy	Pirelli	4mm / 4mm

**Replacement**

Typ	Tyre size	Type of tyre	Manufacturer	Tread depth
	Tirefit	Expiration date 12/2026		

**Legend: Tread depth information for the left tire is listed first, for the right tire it is listed second on the axle in the direction of travel.**



## Equipment

### Standard equipment

- Airbag: Passenger airbag deactivation
- Anti-lock braking system (ABS) with electronic brake force distribution (EBD)
- Attachment points behind the second row of seats for mounting the safety partition net
- Fabric headliner
- Roof spoiler painted in car color
- Digital instrument panel 12.3" (31.2 cm screen diagonal)
- Electronic Shifter
- Lane keeping assist including lane keeping assist
- Electric parking brake with auto-hold function
- FordPass Connect including live traffic information
- Luggage compartment lighting
- Cruise control
- Illuminated glove compartment
- rear window wiper
- Interior mirror, automatically dimming
- Isofix bracket
- Knee pads on the center console
- LED taillights
- Adjustable steering column
- Armrest - centre, rear
- MyKey key system (individually programmable second key)
- Emergency call assistant
- Front and rear parking pilot system
- Post-Collision Assist
- Tire repair kit
- Rear view camera
- Headlight low beam
- Side windows from the 2nd row of seats and rear window, dark tinted.
- Seats: Passenger seat height-adjustable, manually
- Seats: Rear seat backrest
- 12-volt power outlet in the luggage compartment
- Carpet floor mats front and rear, velour
- 2 USB ports in the center console, rear
- Lashing eyes in the luggage compartment
- Electronic immobilizer
- Central locking with remote control and remote luggage compartment release
- Ambient lighting, front
- Exterior mirrors painted in body color, electrically adjustable, heated and foldable
- Tires: 6.5 J x 16 design wheels (4) with 205/60 R16 tires
- Hill start assist
- Roof rails, aluminum
- Diesel particulate filter (DPF)
- Tachometer
- Electronic Safety and Stability Program (ESP)
- Electric windows front and rear
- FordKeyFree system including Ford Power start function
- Luggage compartment cover
- Speed limiter
- Transmission: 8-speed automatic transmission
- Back window, heater
- Interior lighting with LED technology
- Intelligent security system
- Air conditioning with automatic temperature control
- Headrests: 2 front and 3 rear, height adjustable
- Steering wheel: 3-spoke design
- Make-up mirrors in driver and passenger sun visors
- Center console "Premium" front
- Navigation: Ford SYNC 4 including Ford navigation system with AppLink, 13.2" touchscreen and DAB/DAB+
- Upholstery: Cloth
- Pre-Collision Assist
- Tire Pressure Monitoring System (TMPS)
- Windscreen wipers with rain sensor (sensitivity adjustable)
- Headlight assistant with day/night sensor
- Selective driving mode switch
- Electromechanical speed-dependent power steering
- Seats: Driver's seat height adjustable
- Start-stop system
- Phone accessories: Inductive charging station for mobile devices
- Variable radiator air intake
- Warning system for unfastened seat belts for the 1st and 2nd rows of seats



### Extra equipment

- 2 kg powder fire extinguisher
- Anti-theft alarm system including interior monitoring
- Head-up display
- LED matrix headlights, adaptive (LED matrix low beam - LED matrix high beam - LED matrix cornering light, dynamic - LED daytime running lights incl. integrated LED turn signals at the front - LED cornering light, static, incl. maneuvering and bad weather light - Automatic headlight range control - High beam assist, glare-free)
- lettering
- Paint finish: Frozen White
- Radio: B&O Sound System (675 Watt premium sound system with 10 speakers, including subwoofer - based on the renowned sound and design expertise of Bang & Olufsen)
- Transparent protective film for rear bumper
- Mounting points behind the 1st row of seats (according to ISO 27955, required for the installation of the safety partition available as an accessory from your Ford partner)
- Package: Easy Parking (Active Parking Assist with parking and exiting function (in conjunction with 8-speed automatic transmission including semi-automated vehicle guidance) - Door edge protection - Rearview camera with "Split View" technology)
- Package: Winter (heated windscreen - heated steering wheel - individually and variably heated front seats)
- Safety partition behind the 1st row of seats
- Seats: Ford ergonomic seat (driver and front passenger seat, 18-way adjustable: - position, height and tilt of the backrest and seat cushion manually adjustable (in conjunction with EcoBoost Hybrid - front passenger seat, 2-way adjustable) - thigh support, manually extendable - lumbar support, 4-way electrically adjustable)
- Security package

### Brief expert findings

Documents submitted	At the time of the inspection, the vehicle registration certificate Part 2 (title) was available, but the vehicle registration certificate Part 1 (document) was not. (Copy)
VIN comparison	The vehicle identification number (VIN) was read from the vehicle and its conformity with the submitted documents was confirmed by the undersigned during the inspection.
Inspection	The inspection conditions were sufficient for the assessment of the vehicle. Lifting equipment and/or a pit were available for examining the vehicle.
Test drive	No test drive/shunting maneuver was carried out during the inspection of the vehicle.
Engine function test	An engine test run was performed.

### Value reducing factors

No.	Component group	Description
1	Engine	Engine cover (Isolierung) - Damaged - Replace
2	Engine	Engine - Leaking - Diagnosed and repair if necessary
3	Bonnet	Bonnet (Vermehrte steinschläge) - Stone chips - Paint

### Wear and tear

No.	Component group	Description
1	Front bumper	Front bumper - Stone chips - No deduction
2	Vehicle glazing	Windscreen - Stone chips - No deduction
3	Roof	Roof - Stone chips - No deduction

The vehicle shows signs of wear and tear commensurate with its age and use.



## Order/Scope of Order

An order was placed to prepare a sales report for the described vehicle. This report includes the following:

- Description of key vehicle information
- Documentation of equipment features  
*(Delivery by third-party service providers)*
- Documentation of damage, defects, missing parts
- Documentation of prior damage, unrepaired prior damage, repainting
- A brief visual or functional inspection of the equipment details, if possible.  
*(Functional testing of driver assistance systems is not included in the scope of services!)*
- a photographic documentation of the vehicle

## Basis for the order

This product is based on the guidelines for vehicle returns and valuations published by Alphabet Fleet GmbH. The expert makes the specific findings in each individual case objectively, within the framework of the prescribed standards, based on their own expertise.

The vehicle inspection takes place in a fully assembled, unassembled state.

Damage or defects that can only be detected during disassembly/diagnostic work or through further investigation remain within the realm of prognostic risk. An increased risk exists due to concealed defects caused by fraudulent misrepresentation and which were not identifiable by the expert.

Damage or defects resulting from normal use or wear and tear of the vehicle will be accepted in accordance with the applicable standard.

There was no explicit identification or monetary consideration of the expected features within the product.

Features which, in their nature and extent, slightly exceed normal use but do not constitute unacceptable damage, will be documented and indicated as signs of wear, if applicable.

Damage or defects that, according to the applicable standard, can no longer be attributed to normal use or wear and tear are listed under "Value Reducing Factors" in the product description.

Depending on the product specification, a monetary ID can be provided. If this takes place, the costs can be 100% or pro rata depending on the vehicle's age and mileage.

## Previous damages

No apparent prior damage that had been repaired could be found on the vehicle.

## Comments

Der montierte Winterradsatz ist kein Bestandteil der Ausstattung.



Figure 1: Diagonal front (left)



Figure 2: Diagonal front (right)



Figure 3: Diagonal rear (left)



Figure 4: Diagonal rear (right)



Figure 5: Interior - front



Figure 6: Interior - rear



Figure 7: Instrument cluster



Figure 8: Instrument panel



Figure 9: Interior 360° view



Figure 10: Cargo area



Figure 11: VIN



Figure 12: Mounted tyres



Figure 13: Documents



Figure 14: Navigation



Figure 15: Misc.



Figure 16: Misc.



Figure 17: Misc.



Figure 18: Misc.



Figure 19: Misc.



Figure 20: Misc.



Figure 21: Misc.



Figure 22: Misc.



Figure 23: Misc.



Figure 24: Misc.



Figure 25: Misc.



Figure 26: Misc.



Figure 27: Misc.



Figure 28: Misc.

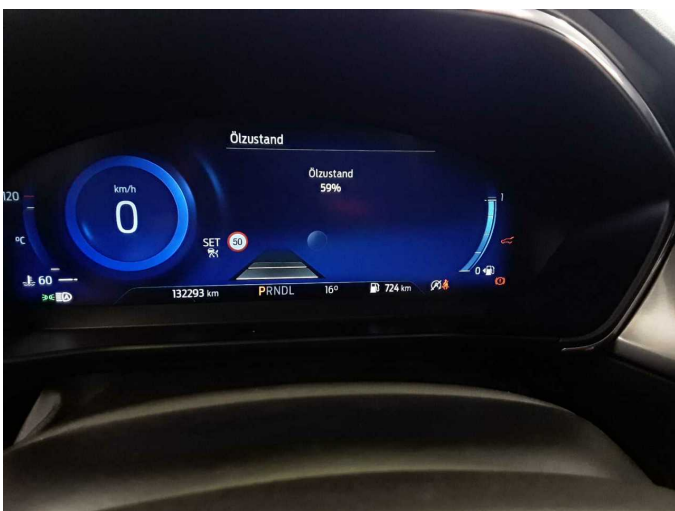
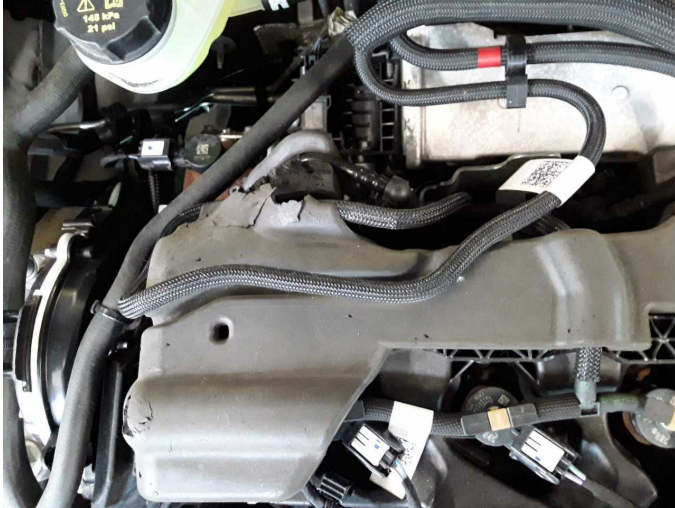


Figure 29: Misc.



Damage 1: Engine: Engine cover (Isolierung) - Damaged - Replace



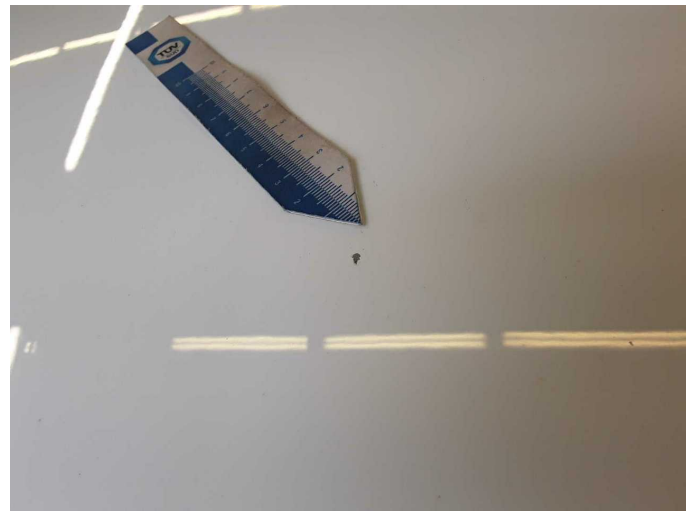
**Damage 1:** Engine: Engine cover (Isolierung) - Damaged - Replace



**Damage 2:** Engine: Engine - Leaking - Diagnosed and repair if necessary



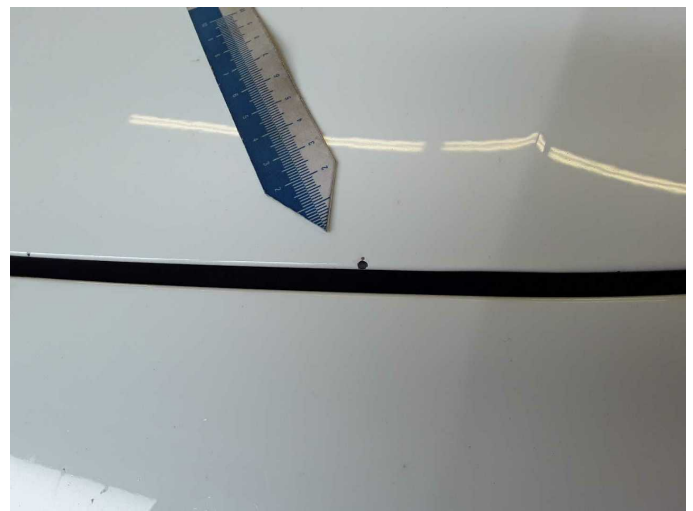
**Damage 3:** Bonnet: Bonnet (Vermehrte steinschläge) - Stone chips - Paint



**Damage 3:** Bonnet: Bonnet (Vermehrte steinschläge) - Stone chips - Paint



**Damage 3:** Bonnet: Bonnet (Vermehrte steinschläge) - Stone chips - Paint



**Damage 3:** Bonnet: Bonnet (Vermehrte steinschläge) - Stone chips - Paint



**Damage 3:** Bonnet: Bonnet (Vermehrte steinschläge) - Stone chips - Paint



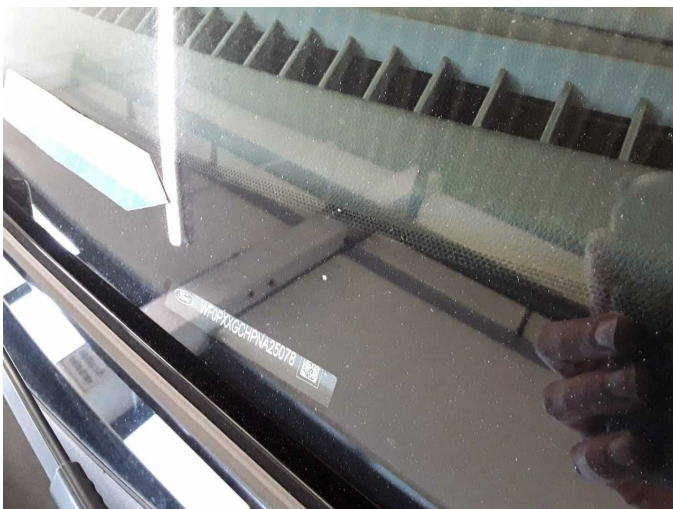
**Wear and tear 1:** Front bumper: Front bumper - Stone chips - No deduction



**Wear and tear 1:** Front bumper: Front bumper - Stone chips - No deduction



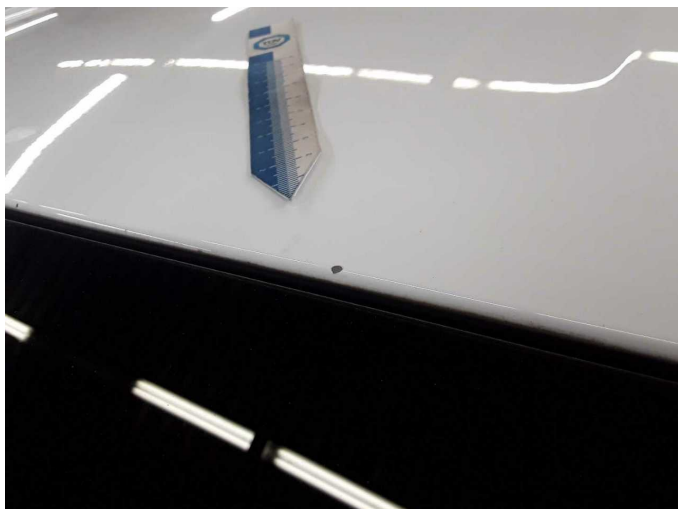
**Wear and tear 2:** Vehicle glazing: Windscreen - Stone chips - No deduction



**Wear and tear 2:** Vehicle glazing: Windscreen - Stone chips - No deduction



**Wear and tear 3:** Roof: Roof - Stone chips - No deduction



**Wear and tear 3:** Roof: Roof - Stone chips - No deduction



# Wartungshistorie

(gemäß Auftraggeber Informationen)

Fahrgestellnummer: WF0PXXGCHPNA25078  
Hersteller / Modell: FORD FORD Focus Turnier 1.5 EcoBlue Start-Stopp-System Aut.  
TITANIUM X

Datum	KM-Stand	Beschreibung
29.01.2026	125.305	AU; Bremse Sonstiges; Bremsscheiben hinten; Bremsscheiben vorne; Systemtest/Eigendiagnose
04.12.2025	122.486	Bremsinspektion vo + hi; Bremse Sonstiges; Bremsklötze hinten; Bremsklötze vorne; Kraftstofffilter ern; Luftfiltereinsatz ern; Motoröl b. Wartung; Ölfilter ern; Regelwartungsdienst; Wartung Sonstiges
25.02.2025	92.111	Bremsflüssigkeit; Bremsflüssigkeit ern; Motoröl b. Wartung; Ölfilter ern; Regelwartungsdienst; Wartung Sonstiges
17.06.2024	60.000	Bremse Sonstiges; Bremsklötze hinten; Bremsklötze vorne; Bremsscheiben + Klötze h; Bremsscheiben hinten; Kraftstofffilter ern; Luftfiltereinsatz ern; Motoröl b. Wartung; Ölfilter ern; Regelwartungsdienst; Wartung Sonstiges
09.11.2023	29.668	Motoröl b. Wartung; Ölfilter ern; Regelwartungsdienst; Wartung Sonstiges