

## Expertise

Protocol number: 45916531  
Order No. / Reference: 26393432  
Inspection date: 9 Jun 2026

Manufacturer: Volkswagen

Model: Touran 2.0 TDI SCR DSG Comfortline

VIN: WVGZZZ1TZNW011173



### Vehicle details

#### Manufacturer / Type / Model / Equipment

Volkswagen Touran 2.0 TDI SCR DSG Comfortline

<b>Vehicle Identification number</b>	WVGZZZ1TZNW011173
<b>Mileage (Read)</b>	155,848 km
<b>First registration</b>	24 Mar 2022
<b>Number of holders</b>	1
<b>Next periodical technical inspection</b>	03/2027 (Report not on hand)

<b>Power / Engine displacement</b>	110 kw / 1,968 ccm
------------------------------------	--------------------

<b>Fuel type / Cylinder</b>	Diesel / 4
-----------------------------	------------

<b>Gearbox / Number of gears</b>	Automatic / 7
----------------------------------	---------------

<b>Type of drive</b>	Front drive
----------------------	-------------

<b>Type of vehicle</b>	Station wagon
------------------------	---------------

<b>Colour / colour code</b>	Reflexsilber-metallic (A7W)
-----------------------------	--------------------------------

<b>Doors / Seats</b>	5 / 5
----------------------	-------

<b>Upholstery type</b>	Cloth
------------------------	-------

<b>Colour of upholstery</b>	Black-Grey
-----------------------------	------------

<b>Re-import</b>	no
------------------	----

<b>readiness to drive</b>	Roadworthy
---------------------------	------------



Vehicle details			
<b>Maintenance booklet / proof</b>	digital proof / complete	<b>Next maintenance in</b>	6,100 km
<b>Last service on / at</b>	01/2026 at 133,061 km		
<b>Key is / should be</b>	2 / 2	<b>FZG documents</b>	ZB#2 (B) was available (copy), ZB#1 (S) was not available.
		<b>Letter No.</b>	GJ064388
<b>Previous damage / Accident</b>	Detectable	<b>Repainting</b>	None detectable
<b>Inspection conditions</b>	sufficient	<b>Lifting equipment / pit</b>	No
<b>Test drive</b>	Not performed	<b>Engine function test</b>	Performed
<b>readiness to drive</b>	Roadworthy		
<b>Manufacturer key number/ type code number</b>	0603 / BWR 00369		
<b>Emission standard</b>	EURO6;WLTP;AP;PI/CI; M, N1 I	<b>fine dust sticker</b>	
<b>Permitted total weight</b>	2,230 kg	<b>Empty weight</b>	

## Tyres

Mounted tyres				
#	Tyre size	Type of tyre	Manufacturer	Tread depth
1)	205/60 R16 96H	Winter tires (with run-flat tires) on Light alloy	Pirelli	5mm / 5mm
2)	205/60 R16 96H	Winter tires (with run-flat tires) on Light alloy	Pirelli	7mm / 7mm

Additional tyres				
#	Tyre size	Type of tyre	Manufacturer	Tread depth
1)	205/60 R16 96V	Summer tyres on Light alloy	Pirelli	0mm / 0mm
2)	205/60 R16 96V	Summer tyres on Light alloy	Pirelli	4mm / 4mm

Replacement				
Typ	Tyre size	Type of tyre	Manufacturer	Tread depth
	Tirefit	Expiration date 01/2026		

**Legend: Tread depth information for the left tire is listed first, for the right tire it is listed second on the axle in the direction of travel.**



## Equipment

### Standard equipment

- 2 USB-C ports on the front
- Storage compartments in the overhead console
- Airbag, head airbag system for front and rear passengers
- Exterior mirror housings and door handles in body color
- Headliner in Storm Grey
- Decorative inlays "New Brushed Design"
- Diesel particulate filter
- Parking assistance
- Electronic Stability Program (ESP) with counter-steering support
- Luggage compartment cover
- Height-adjustable luggage compartment floor
- Transmission: 7-speed DSG
- Rear window heated
- Interior lights with delayed shut-off and dimming function, 2 reading lights front and rear
- Headrests (3) in the 2nd row of seats
- Black radiator grille with chrome strips on the slats
- Steering wheel: Leather
- Illuminated makeup mirrors in the sun visors
- Multifunction display "Plus"
- Non-smoking version
- Emergency call service
- Proactive occupant protection system in conjunction with "Front Assist"
- Tire pressure monitoring system (passive)
- Wheels: Tire Mobility Set
- Drawers under the front seats
- Seat belts: 3 three-point automatic seat belts in the rear
- Seats: Front passenger seat backrest folds down completely
- Seats: Lumbar support in the front
- Start-stop system
- Bumpers in body color
- Textile floor mats
- Prepared for "We Connect" and "We Connect Plus"
- Electronic immobilizer
- Green thermal insulation glazing
- Black trim strips on the side windows
- Storage compartment with lid on the instrument panel
- Airbag for driver and front passenger
- Electrically adjustable and heated exterior mirrors
- Third brake light
- Black roof rails
- Decorative inlays "Piano Black"
- Tachometer
- Electronic parking brake including auto-hold function
- Windscreen in heat-insulating glass
- Baggage management package
- Additional luggage compartment lighting
- Speed limiter
- Glove compartment with cooling option
- Rear window wiper with intermittent function
- ISOFIX mounting points on rear seats
- Air conditioning
- Front headrests
- Paint finish: Solid
- Headlight range control
- Front center armrest
- Fatigue detection
- Emergency braking assistant "Front Assist"
- Upholstery: Cloth
- Radio "Composition"
- Radio accessories: 8 speakers
- Wheels: Light alloy (4) "Karlstad" 6.5 J x 16
- Gearshift knob in leather
- electromechanical power steering
- Seats: 3 individual seats in the 2nd row
- Seats: Folding tables on the backs of the front seats
- Seats: Comfort seats in the front
- Seats: Front seats are height-adjustable
- 12V power outlet on the rear of the center console
- Daytime running light
- First aid kit, warning triangle and high-visibility vest
- Warning tone and light for unfastened seat belts front and rear
- Central locking without safe locking, with remote control and 2 remote folding keys



## Extra equipment

- High beam control "Light Assist" (automatic headlight control with daytime running lights, "Leaving home" function and manual "Coming home" function - High beam control "Light Assist" - Interior mirror automatically dimming - Multifunction camera - Rain sensor)
- Package: Business (Air Care Climatronic air conditioning with active combination filter, rear controls and 3-zone temperature control - cargo net partition - automatically heated front windshield washer nozzles - headlight cleaning system - heated front seats - washer fluid level warning light)
- Auxiliary heating and ventilation (auxiliary heating and ventilation with radio remote control and timer)
- Paint finish: Metallic
- Navigation system "Discover Media" incl. "Streaming & Internet" (screen diagonal 20.3 cm - touchscreen - FM radio reception - dual tuner with phase diversity - MP3 playback - SD card slot - USB-C with Apple compatibility - output power 4x20 watts - map with 2D display - traffic sign display - telephone interface - 3-way sound control - DAB+ digital radio reception)
- Wheels: Winter wheels (additional) LM "Karlstad" 6.5 J x 16 (4 light alloy wheels 6.5 J x 16 - on-board tools and jack - AirStop winter tires 205/60 R 16 H)
- "Comfort" telephone interface with inductive charging function

## Brief expert findings

Documents submitted	At the time of the inspection, the vehicle registration certificate Part 2 (title) was available, but the vehicle registration certificate Part 1 (document) was not. (Copy)
VIN comparison	The vehicle identification number (VIN) was read from the vehicle and its conformity with the submitted documents was confirmed by the undersigned during the inspection.
Inspection	The inspection conditions were sufficient for the assessment of the vehicle. No lifting equipment or pit was available for inspecting the vehicle. Therefore, inspection of the vehicle's underside was only possible to a limited extent.
Test drive	No test drive/shunting maneuver was carried out during the inspection of the vehicle.
Engine function test	An engine test run was performed.
readiness to drive	The vehicle was roadworthy at the time of inspection.

## Value reducing factors

No.	Component group	Description
1	Screen cleaning	Wiper blades - rear (Deckel fehlt) - Differs from the original configuration - Replace
2	Equipment	Tirefit filler - Expired - Replace
3	Front bumper	Front bumper - Scratch(es) - Smart repair
4	2nd wheel set	2 tyres (Innen abgefahren) - Worn - Replace
5	Bonnet	Bonnet - Stone chips - Paint

## Wear and tear

No.	Component group	Description
1	Mudguard - left side	Mudguard - left side - Stone chips - No deduction
2	Rear bumper	Rear bumper - Scratch(es) - No deduction

The vehicle shows signs of wear and tear commensurate with its age and use.

## Accident damages

No.	Accident
1	Side right



## Order/Scope of Order

An order was placed to prepare a sales report for the described vehicle. This report includes the following:

- Description of key vehicle information
- Documentation of equipment features  
*(Delivery by third-party service providers)*
- Documentation of damage, defects, missing parts
- Documentation of prior damage, unrepaired prior damage, repainting
- A brief visual or functional inspection of the equipment details, if possible.  
*(Functional testing of driver assistance systems is not included in the scope of services!)*
- a photographic documentation of the vehicle

## Basis for the order

This product is based on the guidelines for vehicle returns and valuations published by Alphabet Fleet GmbH. The expert makes the specific findings in each individual case objectively, within the framework of the prescribed standards, based on their own expertise.

The vehicle inspection takes place in a fully assembled, unassembled state.

Damage or defects that can only be detected during disassembly/diagnostic work or through further investigation remain within the realm of prognostic risk. An increased risk exists due to concealed defects caused by fraudulent misrepresentation and which were not identifiable by the expert.

Damage or defects resulting from normal use or wear and tear of the vehicle will be accepted in accordance with the applicable standard.

There was no explicit identification or monetary consideration of the expected features within the product.

Features which, in their nature and extent, slightly exceed normal use but do not constitute unacceptable damage, will be documented and indicated as signs of wear, if applicable.

Damage or defects that, according to the applicable standard, can no longer be attributed to normal use or wear and tear are listed under "Value Reducing Factors" in the product description.

Depending on the product specification, a monetary ID can be provided. If this takes place, the costs can be 100% or pro rata depending on the vehicle's age and mileage.

## Previous damages

Non-repaired previous damages were found at the vehicle. The necessary repair costs are listed in the expert report or if necessary, are listed in detail in a separately enclosed repair cost calculation.



Figure 1: Diagonal front (left)



Figure 2: Diagonal front (right)



Figure 3: Diagonal rear (left)



Figure 4: Diagonal rear (right)



Figure 5: Interior - front



Figure 6: Interior - rear



Figure 7: Instrument cluster



Figure 8: Instrument panel



Figure 9: Interior 360° view



Figure 10: Cargo area



Figure 11: VIN



Figure 12: Mounted tyres



Figure 13: Documents



Figure 14: Documents

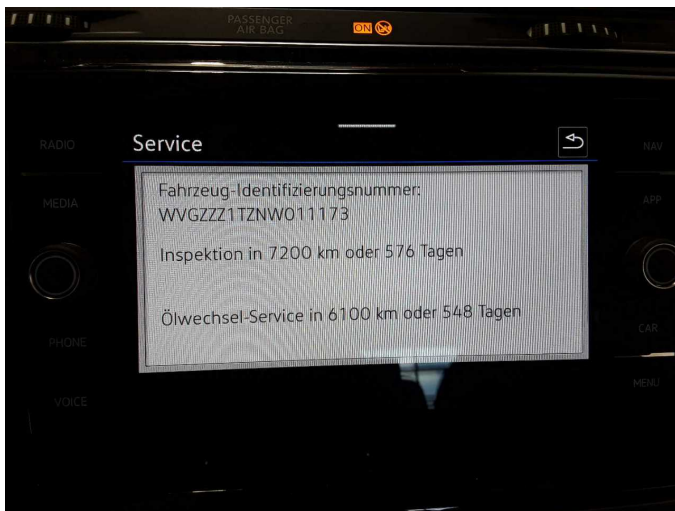


Figure 15: Documents



Figure 16: Additional tyres



Figure 17: Navigation



Figure 18: Misc.



Figure 19: Misc.



Figure 20: Misc.



Figure 21: Misc.

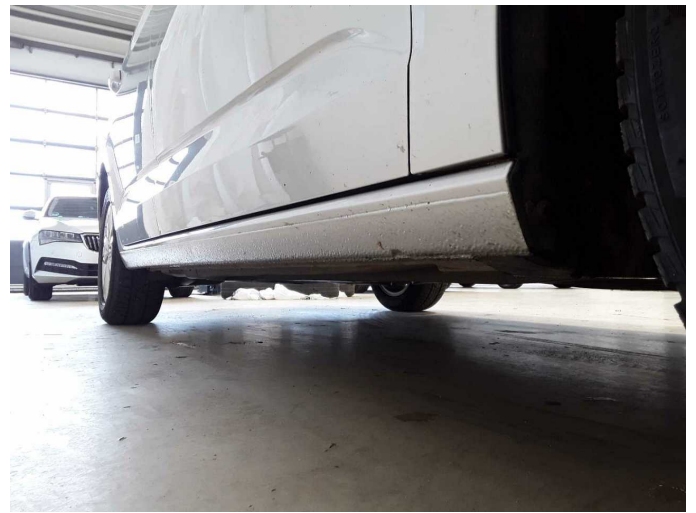


Figure 22: Misc.



Figure 23: Misc.



Figure 24: Misc.



**Damage 1:** Screen cleaning: Wiper blades - rear (Deckel fehlt) - Differs from the original configuration - Replace



**Damage 2:** Equipment: Tirefit filler - Expired - Replace



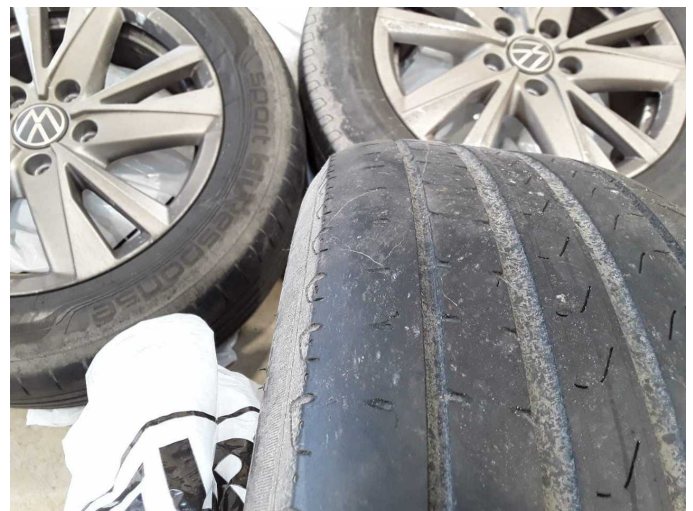
**Damage 3:** Front bumper: Front bumper - Scratch(es) - Smart repair



**Damage 3:** Front bumper: Front bumper - Scratch(es) - Smart repair



**Damage 4:** 2nd wheel set: 2 tyres (Innen abgefahren) - Worn - Replace



**Damage 4:** 2nd wheel set: 2 tyres (Innen abgefahren) - Worn - Replace



**Damage 4:** 2nd wheel set: 2 tyres (Innen abgefahren) - Worn - Replace



**Damage 5:** Bonnet: Bonnet - Stone chips - Paint



**Damage 5:** Bonnet: Bonnet - Stone chips - Paint



**Damage 5:** Bonnet: Bonnet - Stone chips - Paint



**Accident 1:** Side right



**Accident 1:** Side right



Accident 1: Side right



Accident 1: Side right



Accident 1: Side right



Accident 1: Side right



Accident 1: Side right



Accident 1: Side right



**Accident 1: Side right**



# Wartungshistorie

(gemäß Auftraggeber Informationen)

Fahrgestellnummer: WVGZZZ1TZNW011173

Hersteller / Modell: VOLKSWAGEN VW Touran 2.0 TDI SCR DSG Comfortline

Datum	KM-Stand	Beschreibung
06.01.2026	133.061	Getriebeöl ern/prüfen; Motoröl b. Wartung; Ölfilter ern; Regelwartungsdienst; Wartung Sonstiges
30.07.2025	105.201	Motoröl b. Wartung; Ölfilter ern; Ölwechsel; Wartung Sonstiges
05.03.2025	98.088	HU + AU; Kraftstofffilter ern; Luftfiltereinsatz ern; Regelwartungsdienst; Systemtest/Eigendiagnose; Wartung Sonstiges
28.06.2024	79.793	Motoröl b. Wartung; Ölfilter ern; Ölwechsel; Wartung Sonstiges
20.02.2024	66.058	Bremsflüssigkeit; Bremsflüssigkeit ern; Regelwartungsdienst; Wartung Sonstiges
19.10.2023	50.913	Bremse Sonstiges; Bremsklötze hinten; Bremsklötze vorne; Motoröl b. Wartung; Ölfilter ern; Ölwechsel; Wartung Sonstiges
11.09.2023	44.570	Systemtest/Eigendiagnose
10.05.2023	30.834	Regelwartungsdienst; Wartung Sonstiges
13.02.2023	22.201	Motoröl b. Wartung; Ölfilter ern; Ölwechsel; Wartung Sonstiges