

Expertise

Protocol number: 46065889
Order No. / Reference: 26574490
Inspection date: 22 Jun 2026

Manufacturer: Mercedes-Benz

Model: C 300 e T 9G-TRONIC Avantgarde

VIN: W1KAH5EB4PF084034



ALPHABET



ALPHABET

Vehicle details

Manufacturer / Type / Model / Equipment

Mercedes-Benz C 300 e T 9G-TRONIC Avantgarde

Vehicle Identification number W1KAH5EB4PF084034

Mileage (Read) 156,075 km

First registration 9 Nov 2022

Number of holders 1

Next periodical technical inspection 12/2027

(Report on hand)

Power / Engine displacement 150 kw / 1,999 ccm

Fuel type / Cylinder Hybr.B/E ext.auf / 4

Gearbox / Number of gears Automatic / 9

Type of drive Rear drive

Type of vehicle Station wagon

Colour / colour code SPEKTRALLBLAU

METALLIC

Doors / Seats 5 / 5

Upholstery type Artificial leather

Colour of upholstery Beige-Anthracite

Vehicle with smoke odor no



Vehicle details			
Maintenance booklet / proof	Non-existent	Next maintenance in	338 Tag(e)
Key is / should be	2 / 2	FZG documents	ZB#2 (B) was available (copy), ZB#1 (S) was not available.
		Letter No.	GM965113
Previous damage / Accident	Detectable	Repainting	Detectable
Inspection conditions	sufficient	Lifting equipment / pit	yes
Test drive	short drive on the company premises	Engine function test	Performed
Manufacturer key number/ type code number	2222 / BEP 00035		
Emission standard	EURO6;WLTP;AP;PI/CI; M, N1 I	fine dust sticker	
Permitted total weight	2,655 kg	Empty weight	

Tyres

Mounted tyres				
#	Tyre size	Type of tyre	Manufacturer	Tread depth
1)	225/45 R18 95Y	Summer tyres on Light alloy	Goodyear	5mm / 6mm
2)	255/40 R18 99Y	Summer tyres on Light alloy	Goodyear	4mm / 4mm
Additional tyres				
#	Tyre size	Type of tyre	Manufacturer	Tread depth
1)	225/50 R17 98H	Winter tyres on Light alloy	Goodyear	6mm / 6mm
2)	245/45 R17 99H	Winter tyres on Light alloy	Goodyear	3mm / 3mm

Legend: Tread depth information for the left tire is listed first, for the right tire it is listed second on the axle in the direction of travel.



Equipment

Standard equipment

- Airbag for driver and front passenger
- Airbag: Center airbag
- Airbag: Windowbag for driver and front passenger
- Ambient lighting with 64 light colors
- Basic services
- Brake assist, active
- Double cup holder at the front
- EASY-PACK tailgate
- Electronic Stability Program (ESP)
- Velour floor mats
- Transmission: 9-speed automatic, 9G-TRONIC
- Rear bumper in body color
- Interior headliner fabric crystal grey
- KEYLESS-GO start function
- THERMATIC automatic climate control with 2 climate zones
- Front headrests
- Charging cable for household socket, 5m, smooth
- Charging system: AC charging system 11kW
- Steering wheel: Multifunction sports steering wheel in leather
- Otto particulate filter
- Package: AVANTGARDE Exterior (300e)
- Package: Park
- Radio: Extended MBUX functions
- Radio accessories: Digital radio (DAB)
- Radio accessories: Central display
- Tire pressure monitoring system (TPMS)
- Windscreen wipers with rain sensor
- Seats: Rear seat backrests foldable
- Cruise control
- Electronic immobilizer
- Decorative elements in diamond pattern, silver-grey
- Airbag: Automatic passenger airbag deactivation
- Airbag: Side airbag for driver and front passenger
- Acoustic environmental protection
- Left and right exterior mirrors are heated and electrically adjustable
- Roof rails in polished aluminum
- DYNAMIC SELECT
- ECO start/stop function
- Electric windows (4-way)
- Speed Limit Assistant
- rear window wiper
- Heated rear window
- ISOFIX child seat attachment with top tether in the rear
- Mechanical child safety lock for the rear doors
- Rear headrests (3)
- Paint finish: Solid
- Cargo area cover including EASY-PACK safety net
- LED High Performance Headlights
- Mercedes-Benz emergency call system
- Center console in high-gloss black
- Package: Storage
- Package: Interior lighting package
- Upholstery: ARTICO leatherette/fabric
- Radio: MBUX
- Radio accessories: Communication module (LTE) for using Mercedes me connect services
- Remote Services Plus
- Power steering
- Lane Keeping Assist, active
- High-visibility vest for drivers
- Central locking with remote control



Extra equipment

- Ambient lighting with 64 light colors (with directly illuminated light lines.)
- Head-up display
- THERMOTRONIC automatic climate control with 4 climate zones (controlled via the central display or the climate control unit in the center console, with Auto button for automatic control of temperature, air volume and air distribution - control unit on the back of the center console - automatic recirculation when a tunnel is detected via GPS, only in conjunction with navigation system - sensors for detecting e.g. inside/outside temperature - fine dust activated carbon filter - ventilation system - dew point sensors - residual heat function for efficient use of engine waste heat)
- Package: Advanced Comfort Package (Heated seats for driver and front passenger - Seat Comfort Package: - Numerous electric and manual adjustment options for the front seats to adapt to the specific body and comfort requirements of the driver and front passenger - Electro-pneumatic 4-way lumbar support and lateral support adjustment with control element on the seat - Electric seat cushion tilt adjustment - Electric height adjustment - Electric backrest adjustment - Electric seat cushion depth adjustment - Mechanical longitudinal adjustment - Mechanical headrest adjustment)
- Package: Business (300e) (Mirror Package: Electrically folding exterior mirrors with automatic dimming function, ambient lighting with Mercedes-Benz logo projection - Advanced Comfort Package: Heated seats for driver and front passenger, 4-way lumbar support, seat comfort package - Infotainment Package: MBUX Navigation Premium, traffic sign assist, smartphone integration - Public Charging Package)
- Package: Luggage compartment comfort (electrically folding rear seat backrests via switches on the right and left in the control panel in the load compartment - electric opening and closing of the load compartment roller blind - 12V socket on the left in the control panel in the load compartment - reversible mat, with a rubberized, non-slip side and a soft velour side)
- Package: Light (Adaptive Highbeam Assist - automatic switching of the high beams, camera on the inside of the windshield, detects oncoming and preceding illuminated vehicles, activated by pressing the steering wheel control lever to the high beam position)
- Sunroof: Electric panoramic sunroof
- Seats: Comfort seats
- Towbar with ESP trailer stabilization
- Fire extinguisher
- KEYLESS-GO (access and driving authorization system)
- Paint finish: Metallic
- Charging cable for wallbox and public charging station, 5m, smooth 11kW (This charging cable, also called Mode 3 cable, allows you to charge the vehicle battery at the wallbox or at public charging stations with up to 11 kW (Type 2, 3-phase, 16 A).)
- Center console diamond pattern silver grey
- Multifunctional telephony
- Package: Advanced Infotainment Package (MBUX Navigation Premium (hard drive navigation, pre-installation for Live Traffic Information), Traffic Sign Assist, Smartphone Integration (connects the mobile phone wirelessly to the multimedia system via Apple CarPlay and Android Auto), Driver Display - 31.2 cm (12.3") color LCD display, Central Display - 30.2 cm (11.9") touch display with LCD technology)
- Package: Advanced Parking Package (12 ultrasonic sensors - 360° camera - Active Parking Assist with PARKTRONIC: detects free parking spaces, assisted parking, visual and acoustic warning, display of camera and ultrasonic data in the media display - Cross traffic warning: can provide visual and acoustic warnings when reversing out of a parking space and, if necessary, automatically initiate emergency braking - Reverse maneuvering brake: can trigger a braking process - Drive-away assist)
- Package: Driving Assistance Package Plus (Active Distance Assist DISTRONIC, Active Speed Limit Assist, Extended Automatic Restart on Highways, Route-Based Speed Adaptation with Traffic Jam End Function, Active Traffic Jam Assist, Active Steering Assist, Active Lane Change Assist, Active Emergency Stop Assist, Emergency Lane Function, Active Brake Assist with Vehicle, Bicycle and Pedestrian Detection; Intersection Function, Turn Function, Traffic Jam End Emergency Braking Function, Evasive Steering Assist, Active Lane Keeping Assist, Active Blind Spot Assist, PRE-SAFE Impulse Side)
- Upholstery: ARTICO two-tone imitation leather (including black fabric headliner)
- Radio accessories: Advanced sound system (with 9 speakers and 225 watts system power)
- Wheels: 45.7 cm (18") light alloy wheels in 5-twin-spoke design (black painted and polished with front axle 225/45 R 18 on 7.5 J x 18 ET 40, rear axle 255/40 R 18 on 9 J x 18 ET 58)



Brief expert findings

Documents submitted	At the time of the inspection, the vehicle registration certificate Part 2 (title) was available, but the vehicle registration certificate Part 1 (document) was not. (Copy)
VIN comparison	The vehicle identification number (VIN) was read from the vehicle and its conformity with the submitted documents was confirmed by the undersigned during the inspection.
Inspection	The inspection conditions were sufficient for the assessment of the vehicle. Lifting equipment and/or a pit were available for examining the vehicle.
Test drive	A short maneuvering and shunting exercise was carried out on the company premises.
Engine function test	An engine test run was performed.

Value reducing factors

No.	Component group	Description
1	Front bumper	Front bumper (Unterhalb) - Scratched - Smart repair
2	Wheel / tyres	Alloy rim - front right side - Scratched - Loss in value
3	Door - front right side	Door - Scratch(es) - Paint
4	Bonnet	Bonnet - Stone chips - Paint

Wear and tear

No.	Component group	Description
1	Door - rear left side	Door handle - outside - Scratch(es) - No deduction
2	2nd wheel set	2 tyres (Unter 4mm-Kein Teil der Ausstattung) - Worn - No deduction
3	2nd wheel set	1 alloy rim (Kein Teil der Ausstattung) - Scratched - No deduction
4	Documents	Service book - No evidence - No deduction
5	Wheel / tyres	Alloy rim - rear right side - Scratch(es) - No deduction
6	Wheel / tyres	Alloy rim - front left side - Scratch(es) - No deduction
7	Body	Body - Scratch(es) - No deduction
8	Vehicle glazing	Windscreen - Stone chips - No deduction

The vehicle shows signs of wear and tear commensurate with its age and use.

Previous damages

No.	Previous damage	Extent of damage (Net)
1	Side - left, Provided by user / customer, from 28 Mar 2025	758,70 €
2	Rear, Provided by user / customer, from 18 Mar 2025	1.621,20 €
3	Front, Provided by user / customer, from 18 Mar 2025	2.589,50 €
4	Side - left, Provided by user / customer, from 30 Aug 2025	2.910,70 €
5	Side - left, Provided by user / customer, from 14 Jul 2025	2.934,86 €
6	Rear, Provided by user / customer, from 11 Apr 2025	5.570,36 €

Repainting

No.	Repainting
1	Boot lid / rear door
2	Mudguard - left side
3	Side panel - rear left side
4	Door - rear left side
5	Door - front left side



Paint coat thickness measurement

Boot lid / rear door	208 µm	Mudguard - left side	180 µm
Side panel - rear left side	212 µm	Door - rear left side	280 µm
Door - front left side	322 µm		

Order/Scope of Order

An order was placed to prepare a sales report for the described vehicle. This report includes the following:

- Description of key vehicle information
- Documentation of equipment features
(*Delivery by third-party service providers*)
- Documentation of damage, defects, missing parts
- Documentation of prior damage, unrepaired prior damage, repainting
- A brief visual or functional inspection of the equipment details, if possible.
(*Functional testing of driver assistance systems is not included in the scope of services!*)
- a photographic documentation of the vehicle

Basis for the order

This product is based on the guidelines for vehicle returns and valuations published by Alphabet Fleet GmbH. The expert makes the specific findings in each individual case objectively, within the framework of the prescribed standards, based on their own expertise.

The vehicle inspection takes place in a fully assembled, unassembled state.

Damage or defects that can only be detected during disassembly/diagnostic work or through further investigation remain within the realm of prognostic risk. An increased risk exists due to concealed defects caused by fraudulent misrepresentation and which were not identifiable by the expert.

Damage or defects resulting from normal use or wear and tear of the vehicle will be accepted in accordance with the applicable standard.

There was no explicit identification or monetary consideration of the expected features within the product.

Features which, in their nature and extent, slightly exceed normal use but do not constitute unacceptable damage, will be documented and indicated as signs of wear, if applicable.

Damage or defects that, according to the applicable standard, can no longer be attributed to normal use or wear and tear are listed under "Value Reducing Factors" in the product description.

Depending on the product specification, a monetary ID can be provided. If this takes place, the costs can be 100% d or pro rata depending on the vehicle's age and mileage.

Previous damages

According to available information previous damages were repaired at the vehicle. Traces of repairs, which allow conclusions about the area of repair, were not recognizable during the inspection.

Comments

- Winterradsatz ist kein Bestandteil des Auslieferungsumfangs.



Figure 1: Diagonal front (left)



Figure 2: Diagonal front (right)



Figure 3: Diagonal rear (left)



Figure 4: Diagonal rear (right)



Figure 5: Interior - front



Figure 6: Interior - rear



Figure 7: Instrument cluster



Figure 8: Instrument panel



Figure 9: Interior 360° view



Figure 10: Cargo area



Figure 11: VIN



Figure 12: Mounted tyres



Figure 13: Documents



Figure 14: Documents

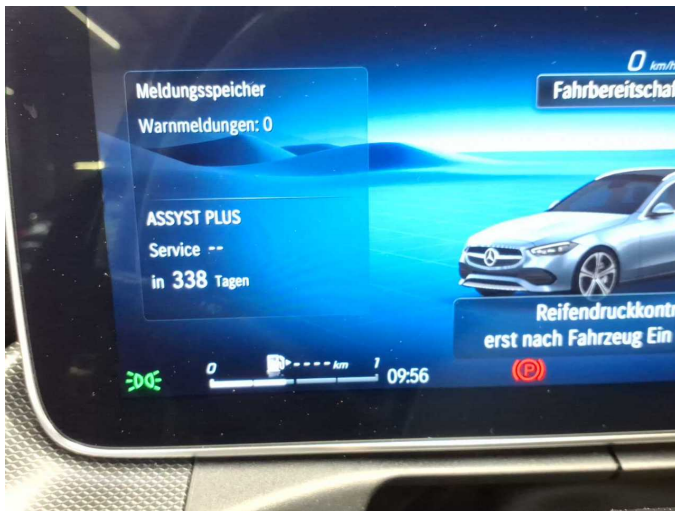


Figure 15: Documents



Figure 16: Additional tyres

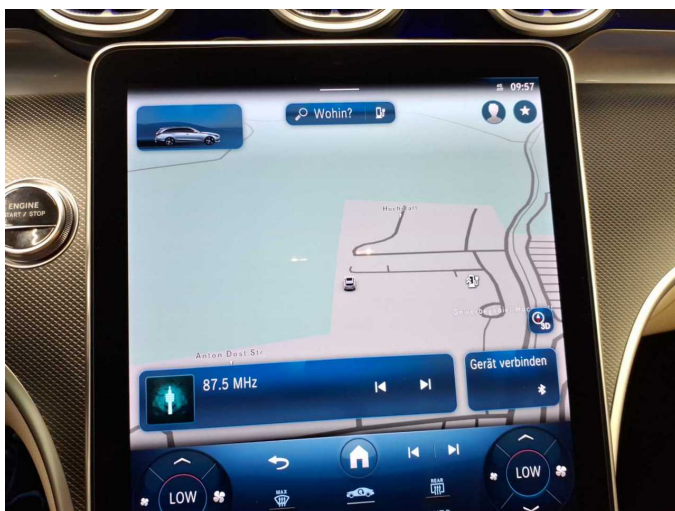


Figure 17: Navigation



Figure 18: Misc.

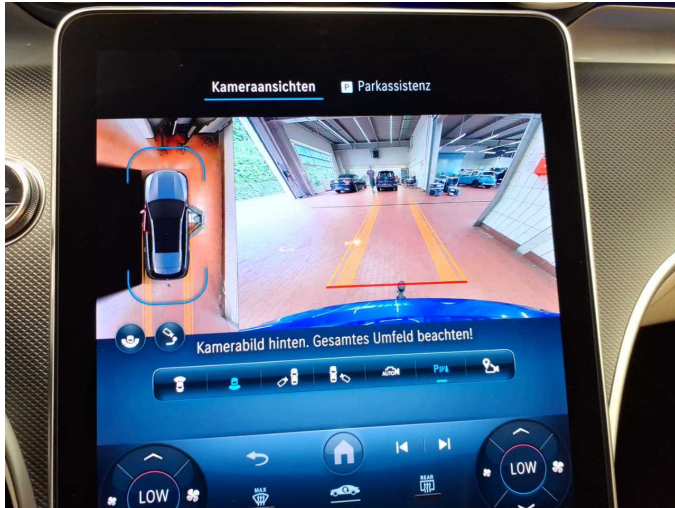


Figure 19: Misc.



Figure 20: Misc.



Figure 21: Misc.

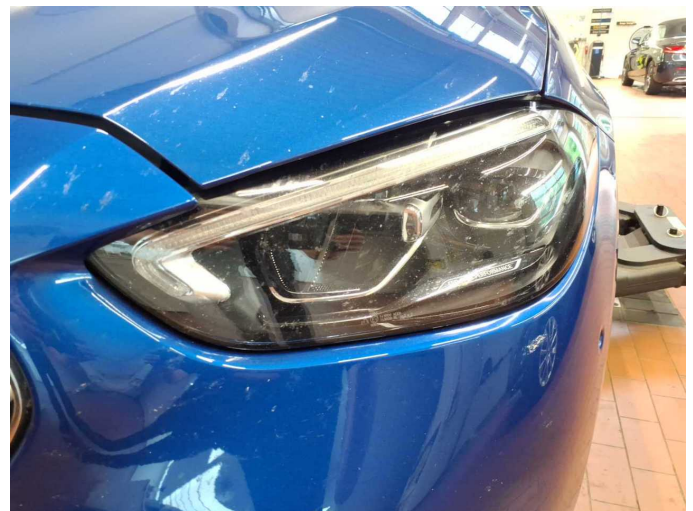


Figure 22: Misc.



Figure 23: Misc.



Figure 24: Misc.



Figure 25: Misc.



Figure 26: Misc.



Figure 27: Misc.



Figure 28: Misc.



Figure 29: Misc.



Figure 30: Misc.



Figure 31: Misc.



Figure 32: Misc.



Figure 33: Misc.



Figure 34: Misc.



Damage 1: Front bumper: Front bumper (Unterhalb) - Scratched - Smart repair



Damage 1: Front bumper: Front bumper (Unterhalb) - Scratched - Smart repair



Damage 2: Wheel / tyres: Alloy rim - front right side - Scratched - Loss in value



Damage 2: Wheel / tyres: Alloy rim - front right side - Scratched - Loss in value



Damage 3: Door - front right side: Door - Scratch(es) - Paint



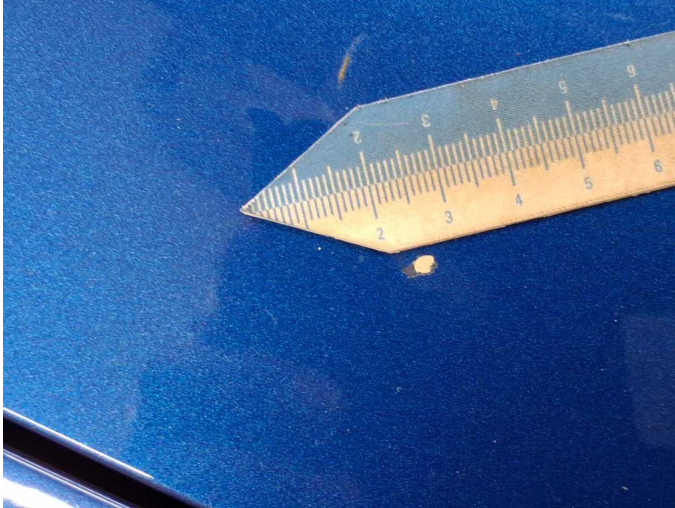
Damage 3: Door - front right side: Door - Scratch(es) - Paint



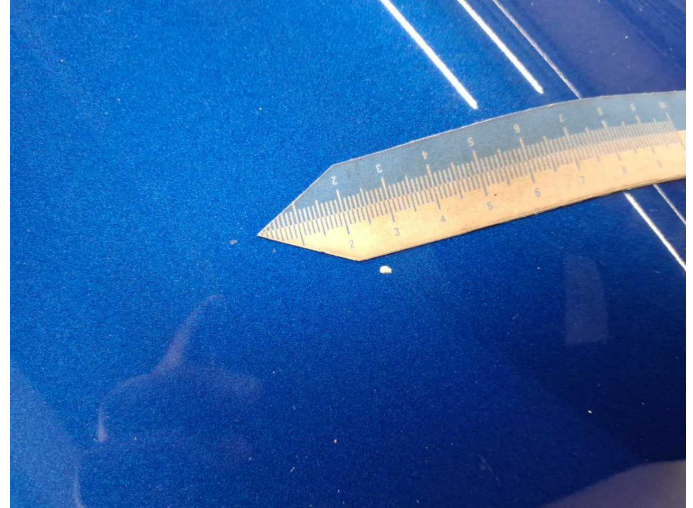
Damage 3: Door - front right side: Door - Scratch(es) - Paint



Damage 4: Bonnet: Bonnet - Stone chips - Paint



Damage 4: Bonnet: Bonnet - Stone chips - Paint



Damage 4: Bonnet: Bonnet - Stone chips - Paint



Repainting 1: Boot lid / rear door



Repainting 2: Mudguard - left side



Repainting 3: Side panel - rear left side



Repainting 4: Door - rear left side



Repainting 5: Door - front left side