



Ford Mustang: L264KH

Vinnumber:	WF0TK1EM2MMA16708	Versionname:	Mustang Mach-E 190kW/ 75,7kWh RWD automaat
First Registrationdate:	25/06/2021	Fiscalpower:	
Expertise Mileage:	108635	Power Kw:	190
Bodytype:		Body colour:	Shadow Black
Gearbox:	Automatic	Paint type:	Metalic
Transmission:		Type of rims (mounted):	Aluminium
Fueltype:	Electric	Parking lot:	722
Number of seats:	5		
Type of rims (mounted):	Aluminium		
Maintenance needed:	No		

Options

Number of keys total	2	Lining leather
GPS		Rear parking sensors
Autom climate control		
Radio multimedia		

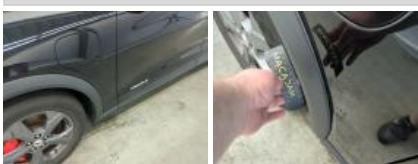
Tyres

Location	Position	Measures	Depth	Make	Type
Front	Left	225 / 60 / 18 / 104 / V / Aluminium	5,2 mm	Continental	Summer
	Right	225 / 60 / 18 / 104 / V / Aluminium	4,3 mm	Continental	Summer
Rear	Left	225 / 60 / 18 / 104 / V / Aluminium	5,9 mm	Continental	Summer
	Right	225 / 60 / 18 / 104 / V / Aluminium	5,1 mm	Continental	Summer

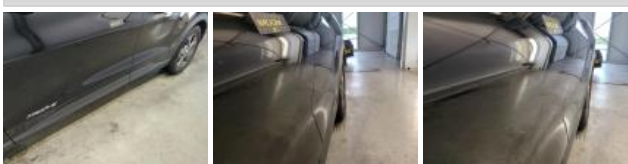
Assistance equipment

Number of charging cables (normal)	0
Number of charging cables (rapid charge)	1

Wheel arch cover FL, Broken, Replace



Door FL, Dent(s) and scratch(es), Repair and paint (complete)



Wing RL, Scratch(es), Repair and paint (complete)



Wing FL, Scratch(es), Repair and paint (complete)



Bonnet, Scratch(es), Polish



Door FR, Dent(s) and scratch(es), Repair and paint (complete)



Kenteken	L264KH
Merk Model	Ford Mustang Mach-E 198kW/ 75,7kWh RWD automatisch
Brandstofsoort	Elektrisch
Datum deel1	25-06-21

Datum reparatie	Kilometerstand	Reparatie omschrijving
17-06-25	86.747	APK
17-06-25	86.747	Ruitenwischerblad(en) achterzijde
17-06-25	86.747	Ruitenwischerblad(en) voorzijde
17-06-25	86.747	Vervanging band
17-02-25	79.532	Sleutelbatterij
19-06-24	66.609	Reparatie band(en)
06-12-23	54.512	Vervanging band
14-03-23	37.203	High Voltage lader aansluiting
26-08-21	0	Accu