

Expertise

Protocol number: 46221104
Order No. / Reference: 26518091
Inspection date: 30 Jun 2026

Manufacturer: Ford

Model: S-Max 2.0 EcoBlue Aut. ST-LINE

VIN: WF0JXXWPCJNY67042



Vehicle details

Manufacturer / Type / Model / Equipment

Ford S-Max 2.0 EcoBlue Aut. ST-LINE

Vehicle Identification number WF0JXXWPCJNY67042

Mileage (Read) 115,974 km

First registration 26 Apr 2022

Number of holders 1

Next periodical technical inspection 04/2027
(Report on hand)

Power / Engine displacement 140 kw / 1,995 ccm

Fuel type / Cylinder Diesel / 4

Gearbox / Number of gears Automatic / 8

Type of drive Front drive

Type of vehicle Station wagon

Colour / colour code Frost-Weiß

Doors / Seats 5 / 5

Upholstery type Part leather

Colour of upholstery Black

Re-import no

readiness to drive Roadworthy



Vehicle details

Maintenance booklet / proof	digital proof / complete	Next maintenance in	
Last service on / at	08/2025 at 91,131 km		
Key is / should be	2 / 2	FZG documents	ZB#2 (B) was available (copy), ZB#1 (S) was not available.
		Letter No.	GH429818
Previous damage / Accident	None detectable	Repainting	Detectable
Inspection conditions	sufficient	Lifting equipment / pit	yes
Test drive	Not performed	Engine function test	Performed
readiness to drive	Roadworthy		
Manufacturer key number/ type code number	8566 / BQR 00323		
Emission standard	EURO6;WLTP;AP;PI/CI; M, N1 I	fine dust sticker	
Permitted total weight	2,555 kg	Empty weight	

Tyres

Mounted tyres

#	Tyre size	Type of tyre	Manufacturer	Tread depth
1)	235/50 R18 101Y	Summer tyres on Light alloy	Pirelli	6mm / 6mm
2)	235/50 R18 101Y	Summer tyres on Light alloy	Pirelli	6mm / 6mm

Additional tyres

#	Tyre size	Type of tyre	Manufacturer	Tread depth
1)	235/55 R17 103V	Winter tyres on Light alloy	Pirelli	7mm / 7mm
2)	235/55 R17 103V	Winter tyres on Light alloy	Pirelli	7mm / 7mm

Replacement

Typ	Tyre size	Type of tyre	Manufacturer	Tread depth
Tirefit		Expiration date 02/2026		

Legend: Tread depth information for the left tire is listed first, for the right tire it is listed second on the axle in the direction of travel.

TÜV SÜD Auto Partner GmbH
Wiesenring 2
04159 Leipzig

Inspection location
Mosolf SE & Co.KG
August-Horch-Straße 1
04519 Rackwitz



Equipment



Standard equipment

- Storage compartments (illuminated glove compartment - map pockets on the driver's and passenger's seat backrests)
- Exterior mirrors in body color, driver and passenger side, electrically adjustable and heated (with integrated turn signals and ambient lighting and electrically foldable)
- Attachment points for safety partition grilles (attachment points 2nd row of seats)
- Hill start assist
- Body styling kit (front apron in special design and painted in body color - rear apron painted in body color with glossy black diffuser (not in conjunction with trailer hitch, removable) - fog lights with LED technology with glossy black painted surround - radiator grille (upper and lower part) in special honeycomb design, painted glossy black)
- Roof rails, black
- Diesel particulate filter (DPF)
- Front door sill trims with ST-Line design
- Driver information system display 25.4 cm color (on-board computer with fuel consumption and mileage information as well as outside temperature display)
- Chassis: Sport chassis
- Electric front and rear windows (with anti-pinch protection and automatic opening and closing function)
- Electronic parking brake
- Ford EasyFold: 2nd row seat backrests fold down electrically at the touch of a button.
- Ford Power Start function (keyless start)
- Ford Power Start function with Ford Key Free system (keyless starting and locking/unlocking)
- Luggage compartment lighting
- Transmission: 8-speed automatic transmission (with manual shift option)
- Back window, heater
- Rear spoiler
- Interior mirror, automatically dimming
- Isofix mounting (on all seats in the 2nd row)
- Electric child safety lock
- Air conditioning with automatic temperature control (separately adjustable for driver and passenger side (2-zone automatic climate control))
- Paint finish: Solid
- Steering wheel: Steering column, adjustable in height and reach
- Steering wheel: Paddle shifters on the steering wheel
- Front center console with padded armrest (storage compartment and 2 cup holders)
- Ambient lighting in the front (including door storage, front door handle and footwell lighting)
- Anti-lock braking system (ABS) (with Electronic Stability Program (ESP), Roll Stability Control (RSC) and Traction Control System (TCS))
- Attachment points for safety partition grilles (attachment points 1st row of seats)
- Tires: 7.5 J x 18 alloy wheels (4) with 235/50 R 18 tires (10-spoke design in pearl grey premium paint finish, diamond-turned; with matte black pockets)
- third brake light
- Brake calipers, painted red
- Black woven fabric headliner
- Overhead console (with glasses storage compartment and fold-out additional mirror for eye contact with rear passengers)
- Tachometer
- Electronic Shifter
- Lane Assist including Lane Keeping Assist and Driver Alert (warns the driver of an unintentional lane change via short steering wheel vibrations (without activation of the turn signal) - additionally, active steering support assists in returning to the lane)
- High Beam Assist
- Ford Easy Fuel (The Ford Easy Fuel convenience refueling system eliminates the need for a separate internal fuel filler cap and prevents misfueling by detecting the size difference between petrol and diesel nozzles. The filler neck only opens when the correct fuel is used.)
- Luggage compartment cover (removable)
- Cruise control system with intelligent speed limiter (interior mirror, automatically dimming - traffic sign recognition system)
- rear window wiper
- Interior lighting with delay circuit
- Intelligent Protection System (IPS): - Front headrests, 4-way height and tilt adjustable - Front airbag for driver and front passenger - Driver's knee airbag - Head and shoulder airbags, front and for 2nd row of seats - Side airbag for driver and front passenger - Side airbag for outer rear seats of the 2nd row - Seat belt tensioners and belt force limiters, front - 3-point seat belts on all seats, height adjustable in the front)
- Steering wheel: Multifunction leather steering wheel
- Front and rear reading lights (with LED technology)
- MyKey key system (individually programmable second key) (setting options include: - Limiting the maximum speed and radio volume (to max. volume 15 out of 32) - Speed warning (when the set speed limit is exceeded) - Safety assistance systems cannot be deactivated - Extended warning system for unfastened seat belts)
- Fog light
- Emergency brake light (pulsating illumination of the brake lights during hard braking)
- Package: Winter (Heated windscreen - Heated leather steering wheel - Individually and variably heated front seats)



- Ford navigation system including Ford SYNC 3 with AppLink, touchscreen, DAB/DAB+ and FordPass Connect (communication and entertainment with voice control - Android Auto, Apple CarPlay - Bluetooth hands-free system and audio streaming - eCall emergency call system - live traffic - Wi-Fi hotspot - radio/CD player, 2 USB ports, 8 speakers, steering wheel controls - 20.3 cm screen - DAB/DAB+ - acoustic and visual route guidance, dynamic navigation, lane keeping assist, road map for Europe - extended voice control and voice output - Michelin travel guide for Europe - quick address search)
- Pedal assembly with aluminum pads
- Tire repair kit (for use at a maximum speed of 80 km/h)
- Tire Pressure Monitoring System (TPMS)
- LED taillights
- Windscreen wipers with rain sensor
- Headlight assistant with day/night sensor
- Side windows from the 2nd row of seats and rear window, dark tinted.
- Seats: Flexible seating system "FoldFlatSystem (FFS)" (2nd row of seats with 3 individual seats - adjustable longitudinally - seat backrests adjustable for tilt and individually foldable - headrests retractable)
- Power outlet: 12-volt connection in the luggage compartment and in the center console
- LED daytime running lights
- Traffic sign recognition system
- Lashing eyes in the luggage compartment
- Immobiliser
- Central locking with remote control (remote luggage compartment release - second folding vehicle key)

Extra equipment

- Package: Business III (Automatic) (Sony Navigation incl. Ford SYNC 3, AppLink, Touchscreen, Voice Control, Radio/CD Player, MP3-compatible, 2 USB ports, 390-watt premium sound system, 12 speakers, steering wheel remote control, Bluetooth hands-free system, FordPass Connect, eCall, DAB/DAB+, Adaptive LED headlights with glare-free high beam, ACC, Traffic Jam Assist, Pre-Collision Assist, Forward Collision Warning, Emergency Brake Assist, Front and Rear View Camera, Blind Spot Assist, Cross Traffic Alert, Dynamic Distance Control, Power Tailgate with Sensors, Ford Key Free System, Park Assist)

- Front and rear parking pilot system
- Upholstery: Leather/fabric in suede look (seat center panels in fabric (suede look) and seat bolsters in leather - driver's seat, 10-way electrically adjustable with memory function - passenger seat, 10-way electrically adjustable)
- Headlight dipped beam with switch-off delay including "greeting function"
- Electro-mechanical power steering (EPAS - Electric Power Assisted Steering)
- Seats: Front sports seats (with enhanced lateral support)
- Seats: Front seats can be heated individually and variably.
- Start-stop system
- 230 volt socket
- Bumpers painted in body color
- Trays on the front seatbacks
- Premium carpet floor mats front and rear (as well as in the 3rd row of seats if ordered as an optional extra)
- Warning system for unfastened seat belts for the 1st and 2nd rows of seats (as well as the 3rd row of seats if ordered as an optional extra)
- Cigarette lighter (and ashtray in the center console)

- Detachable towbar (including ESP trailer stabilization)
- Fuel-operated auxiliary heater (including remote control and heated windscreen)
- Paint finish: Frost White
- Panoramic roof (not openable)
- Safety partition net behind the 2nd row of seats



Brief expert findings

Documents submitted	At the time of the inspection, the vehicle registration certificate Part 2 (title) was available, but the vehicle registration certificate Part 1 (document) was not. (Copy)
VIN comparison	The vehicle identification number (VIN) was read from the vehicle and its conformity with the submitted documents was confirmed by the undersigned during the inspection.
Inspection	The inspection conditions were sufficient for the assessment of the vehicle. Lifting equipment and/or a pit were available for examining the vehicle.
Test drive	No test drive/shunting maneuver was carried out during the inspection of the vehicle.
Engine function test	An engine test run was performed.
readiness to drive	The vehicle was roadworthy at the time of inspection.

Value reducing factors

No.	Component group	Description
1	Seat - front	Seat cover - right side - Soiled - Clean
2	Equipment	Tirefit filler - Due - Replace
3	Door - front left side	Brightware - lower - Scratch(es) - Smart repair
4	Sill - right side	Trim - Scratch(es) - Smart repair
5	Braking system	Brake discs and brake pads - front - Worn - Replace

Wear and tear

No.	Component group	Description
1	Front bumper	Spoiler (Unten) - Scratch(es) - No deduction
2	Body	Body (Flugrost) - Soiled - No deduction
3	Vehicle glazing	Windscreen - Stone chips - No deduction
4	Steering system	Steering wheel sheath - Scratch(es) - No deduction
5	2nd wheel set	1 alloy rim - Scratched - No deduction
6	2nd wheel set	1 alloy rim - Scratched - No deduction
7	2nd wheel set	1 alloy rim - Scratch(es) - No deduction

The vehicle shows signs of wear and tear commensurate with its age and use.

Repainting

No. Repainting

1	Roof rail - left side, Professionally carried out
---	---

Paint coat thickness measurement

Roof rail - left side	176 µm
-----------------------	--------

Order/Scope of Order

An order was placed to prepare a sales report for the described vehicle. This report includes the following:

- Description of key vehicle information
- Documentation of equipment features
(*Delivery by third-party service providers*)
- Documentation of damage, defects, missing parts
- Documentation of prior damage, unrepaired prior damage, repainting
- A brief visual or functional inspection of the equipment details, if possible.
(*Functional testing of driver assistance systems is not included in the scope of services!*)
- a photographic documentation of the vehicle



Basis for the order

This product is based on the guidelines for vehicle returns and valuations published by Alphabet Fleet GmbH. The expert makes the specific findings in each individual case objectively, within the framework of the prescribed standards, based on their own expertise.

The vehicle inspection takes place in a fully assembled, unassembled state.

Damage or defects that can only be detected during disassembly/diagnostic work or through further investigation remain within the realm of prognostic risk. An increased risk exists due to concealed defects caused by fraudulent misrepresentation and which were not identifiable by the expert.

Damage or defects resulting from normal use or wear and tear of the vehicle will be accepted in accordance with the applicable standard.

There was no explicit identification or monetary consideration of the expected features within the product.

Features which, in their nature and extent, slightly exceed normal use but do not constitute unacceptable damage, will be documented and indicated as signs of wear, if applicable.

Damage or defects that, according to the applicable standard, can no longer be attributed to normal use or wear and tear are listed under "Value Reducing Factors" in the product description.

Depending on the product specification, a monetary ID can be provided. If this takes place, the costs can be 100% d or pro rata depending on the vehicle's age and mileage.

Previous damages

No apparent prior damage that had been repaired could be found on the vehicle.

Comments

- Winterradsatz ist kein Bestandteil des Auslieferungsumfangs.



Figure 1: Diagonal front (left)



Figure 2: Diagonal front (right)



Figure 3: Diagonal rear (left)



Figure 4: Diagonal rear (right)



Figure 5: Interior - front



Figure 6: Interior - rear



Figure 7: Instrument cluster



Figure 8: Instrument panel



Figure 9: Interior 360° view



Figure 10: Cargo area



Figure 11: VIN



Figure 12: Mounted tyres



Figure 13: Documents

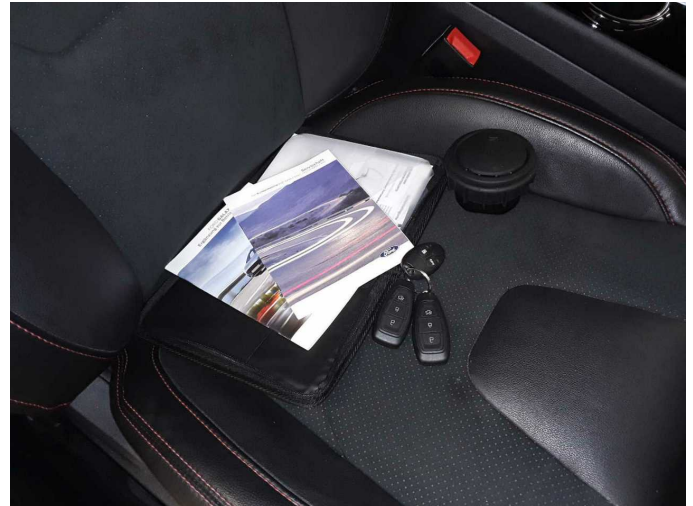


Figure 14: Documents



Figure 15: Documents



Figure 16: Documents



Figure 17: Additional tyres

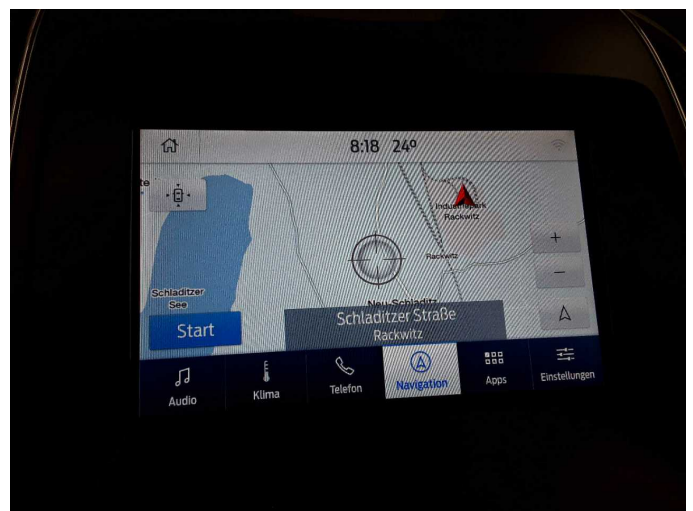


Figure 18: Navigation



Figure 19: Misc.



Figure 20: Misc.

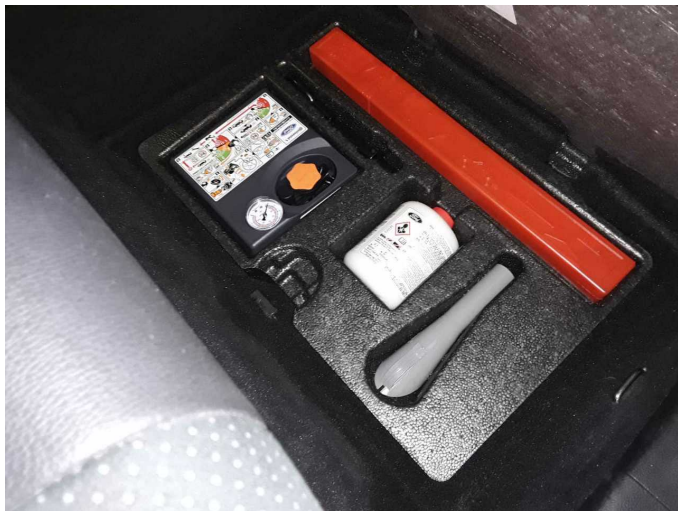


Figure 21: Misc.

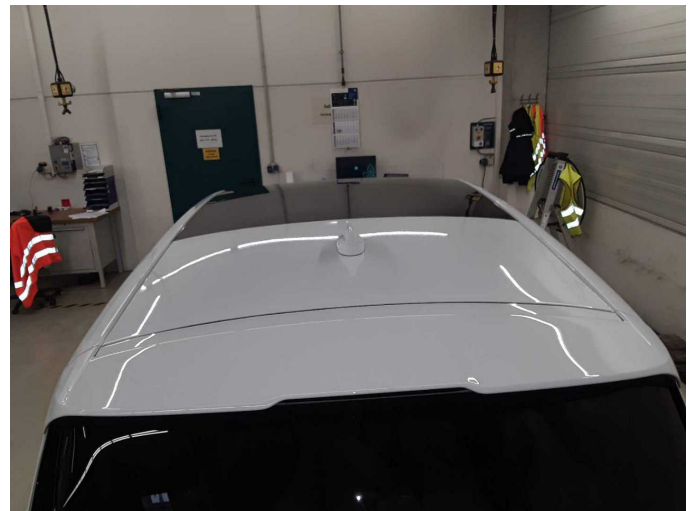


Figure 22: Misc.



Figure 23: Misc.



Figure 24: Misc.



Figure 25: Misc.



Figure 26: Misc.



Figure 27: Misc.



Figure 28: Misc.



Figure 29: Misc.



Figure 30: Misc.



Figure 31: Misc.



Figure 32: Misc.



Figure 33: Misc.



Damage 1: Seat - front: Seat cover - right side - Soiled - Clean



Damage 1: Seat - front: Seat cover - right side - Soiled - Clean



Damage 2: Equipment: Tirefit filler - Due - Replace



Damage 3: Door - front left side: Brightware - lower - Scratch(es) - Smart repair



Damage 3: Door - front left side: Brightware - lower - Scratch(es) - Smart repair



Damage 4: Sill - right side: Trim - Scratch(es) - Smart repair



Damage 4: Sill - right side: Trim - Scratch(es) - Smart repair



Damage 5: Braking system: Brake discs and brake pads - front - Worn - Replace



Damage 5: Braking system: Brake discs and brake pads - front - Worn - Replace



Damage 5: Braking system: Brake discs and brake pads - front - Worn - Replace



Damage 5: Braking system: Brake discs and brake pads - front - Worn - Replace



Damage 5: Braking system: Brake discs and brake pads - front - Worn - Replace



Damage 5: Braking system: Brake discs and brake pads - front - Worn - Replace



Damage 5: Braking system: Brake discs and brake pads - front - Worn - Replace



Wear and tear 1: Front bumper: Spoiler (Unten) - Scratch(es) - No deduction



Wear and tear 1: Front bumper: Spoiler (Unten) - Scratch(es) - No deduction



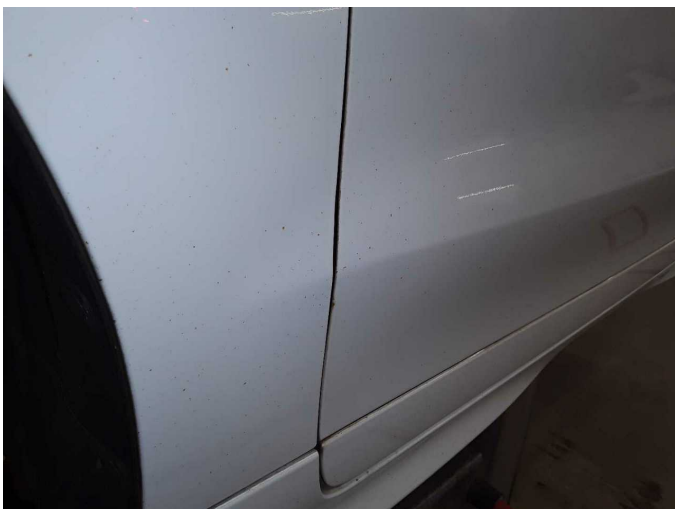
Wear and tear 2: Body: Body (Flugrost) - Soiled - No deduction



Wear and tear 2: Body: Body (Flugrost) - Soiled - No deduction



Wear and tear 2: Body: Body (Flugrost) - Soiled - No deduction



Wear and tear 2: Body: Body (Flugrost) - Soiled - No deduction



Wear and tear 5: 2nd wheel set: 1 alloy rim - Scratched - No deduction



Wear and tear 5: 2nd wheel set: 1 alloy rim - Scratched - No deduction



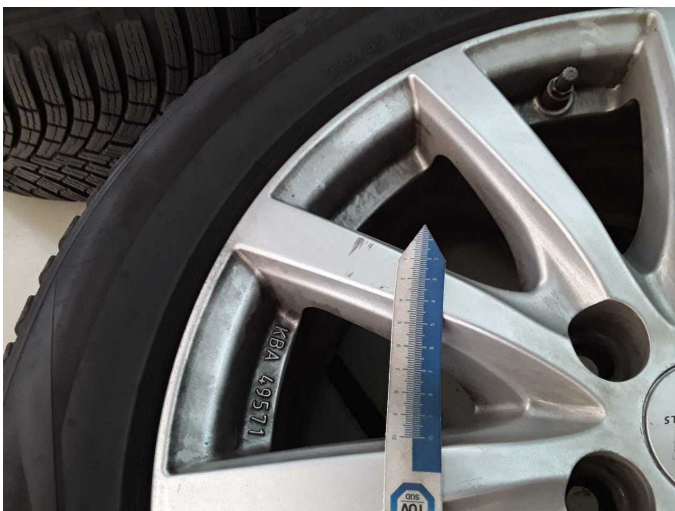
Wear and tear 6: 2nd wheel set: 1 alloy rim - Scratched - No deduction



Wear and tear 6: 2nd wheel set: 1 alloy rim - Scratched - No deduction



Wear and tear 7: 2nd wheel set: 1 alloy rim - Scratch(es) - No deduction



Wear and tear 7: 2nd wheel set: 1 alloy rim - Scratch(es) - No deduction



Wear and tear 7: 2nd wheel set: 1 alloy rim - Scratch(es) - No deduction



Roof rail - left side: 176 µm



Wartungshistorie

(gemäß Auftraggeber Informationen)

Fahrgestellnummer: WF0JXXWPCJNY67042

Hersteller / Modell: FORD FORD S-Max 2.0 EcoBlue Aut. ST-LINE

Datum	KM-Stand	Beschreibung
02.03.2026	110.729	Batterie ern
11.08.2025	91.131	Bremse Sonstiges; Bremsklötze hinten; Bremsscheiben + Klötze h; Bremsscheiben hinten; Motoröl b. Wartung; Ölfilter ern; Regelwartungsdienst; Wartung Sonstiges
15.04.2025	83.423	AU
18.06.2024	62.080	Bremsflüssigkeit; Bremsflüssigkeit ern; Kraftstofffilter ern; Luftfiltereinsatz ern; Motoröl b. Wartung; Ölfilter ern; Regelwartungsdienst; Systemtest/ Eigendiagnose; Wartung Sonstiges
02.06.2023	31.378	Motoröl b. Wartung; Ölfilter ern; Regelwartungsdienst; Wartung Sonstiges