

Expertise

Protocol number: 45990630
Order No. / Reference: 26506994
Inspection date: 17 Jun 2026

Manufacturer: Opel

Model: Astra Sports Tourer 1.5 D Automatik Business Elegance

VIN: VXKFCYHZTP1100911



Vehicle details

Manufacturer / Type / Model / Equipment

Opel Astra Sports Tourer 1.5 D Automatik Business Elegance

Vehicle Identification number VXKFCYHZTP1100911

Mileage (Read) 119,681 km

First registration 7 May 2024

Number of holders 1

Power / Engine displacement 96 kw / 1,498 ccm

Fuel type / Cylinder Diesel / 4

Gearbox / Number of gears Automatic / 8

Type of drive Front drive

Type of vehicle Station wagon

Colour / colour code TYPE HABILLAGE
EXTERIEUR
METALLISEE VERNIS

Doors / Seats 5 / 5

Upholstery type Cloth / leather
combination

Colour of upholstery Grey-Black

Vehicle with smoke odor no



Vehicle details

Maintenance booklet / proof	Available / complete	Next maintenance in	15,700 km
Last service on / at	02/2026 at 105,390 km		
Key is / should be	2 / 2	FZG documents	ZB#2 (B) was available (copy), ZB#1 (S) was not available.
		Letter No.	HB423611
Previous damage / Accident	Detectable	Repainting	Detectable
Inspection conditions	sufficient	Lifting equipment / pit	yes
Test drive	Not performed	Engine function test	Performed
Manufacturer key number/ type code number	1889 / AEY 00107		
Emission standard	EURO6;WLTP;EA;PI/CI;M, N1, N2	fine dust sticker	
Permitted total weight	1,980 kg	Empty weight	

Tyres

Mounted tyres

#	Tyre size	Type of tyre	Manufacturer	Tread depth
1)	205/55 R16 94V	All-season tyres on Light alloy	Sonstige	5mm / 5mm
2)	205/55 R16 94V	All-season tyres on Light alloy	Sonstige	5mm / 5mm

Replacement

Typ	Tyre size	Type of tyre	Manufacturer	Tread depth
Tirefit		Expiration date 05/2029		

Legend: Tread depth information for the left tire is listed first, for the right tire it is listed second on the axle in the direction of travel.

TÜV SÜD Auto Partner GmbH
Wiesenring 2
04159 Leipzig

Inspection location
Mosolf SE & Co.KG
Faberweg 25
73230 Kirchheim unter Teck



Equipment



Standard equipment

- Storage compartments (storage compartment in the center console, in the front doors suitable for 1.5-liter beverage bottles, in the rear doors suitable for 0.5-liter beverage bottles, glove compartment with LED lighting)
- Airbag: Front and rear outer head airbags
- Anti-lock braking system (ABS) (including brake assist)
- Exterior mirrors, electrically adjustable, heated and folding
- Exterior mirror housings in black
- Hill Start Assist
- third brake light
- Diesel particulate filter (DPF) maintenance-free (exhaust aftertreatment via SCR (Selective Catalytic Reduction) catalyst with AdBlue (urea injection). Vehicles with BlueInjection technology require refilling of the AdBlue fluid between regular service intervals. A display in the vehicle informs the driver in good time when refilling is necessary.)
- Front Collision Warning (with automatic emergency braking, pedestrian detection, lane keeping assist, traffic sign recognition and driver fatigue detection, as well as automatic speed assist with stop function)
- Wiring harness for trailer hitch
- Dual-zone automatic climate control (dual-zone automatic climate control with separate temperature control for driver and front passenger - recirculation mode, manual - particle/activated carbon filter - automatic air distribution - sun position sensor - humidity sensor)
- LED headlights (LED headlights - LED daytime running lights - LED taillights - LED turn signals - manual headlight range control - high beam assist - automatic low beam - rain sensor)
- Steering wheel heating
- Center armrest, front and rear (front center armrest with USB port and 2 USB chargers - front and rear cup holders - storage compartments - rear center armrest with pass-through)
- Fog light
- Electric parking brake
- Tire repair kit (including tire sealant and 12-volt compressor (without jack))
- Tire pressure monitoring system
- 180-degree reversing camera (parking pilot, front and rear parking aid)
- Keyless locking and starting system Keyless Open & Start
- safety net
- Seats: Ergonomic active driver's seat in Isabella fabric/premium leatherette (certified by the German Campaign for Healthy Backs (AGR) - adjustable length, height, tilt, backrest angle, and seat cushion angle - electro-pneumatically adjustable lumbar support (height and length) - extendable thigh support - pockets on the backs of the front seats, driver and front passenger - Isabella fabric/ premium leatherette, black - heated front seats and heated steering wheel)
- Airbag: Chest-pelvis side airbags, driver and front passenger (side airbag, front passenger can be manually deactivated)
- Airbag: Front airbags, driver and front passenger (front passenger airbag can be manually deactivated)
- Automatic activation of the hazard warning lights (and unlocking of the doors after deployment of the airbag or seatbelt pretensioner)
- On-board computer
- Roof rails
- Tachometer
- Electronic brake force distribution (EBD)
- Electronic Stability Program (ESP) and Traction Control with engine and brake intervention (TCPlus)
- Electric windows front and rear (with one-touch function and anti-pinch protection)
- Transmission: 8-speed automatic transmission
- Back window, heater
- rear window wiper
- Interior rearview mirror, automatically dimming
- Air conditioning: Intelli-Air air quality system "Clean Cabin" (incl. air quality monitoring and air filtration system)
- Front headrests and 3 rear headrests, height adjustable
- LED ambient lighting (front doors, adjustable in 8 colors)
- LED interior lighting (including reading lights, front and rear, as well as trunk lighting and lighting in the front footwell)
- Steering wheel: Leather steering wheel, flattened, perforated, with steering wheel remote control and paddle shifters
- Illuminated makeup mirrors in both sun visors
- Navigation system (Multimedia infotainment system with 10" color touchscreen display and 10" driver information display; navigation system with integrated memory; 3D map display for Europe and Russia; dynamic route guidance via map and/or arrow display and voice prompts; TomTom Online Traffic; online POI search and route guidance; parking information; fuel price information; live weather; over-the-air map updates; intelligent voice control; "Hey Opel" shortcut button; 6 functions; active route suggestions)
- Rear seat backrest folds forward in a 40:20:40 split
- Seat belts: Three-point seat belts in all seats (belt force limiter and belt tensioner in the front and on the outer rear seats - warning tone and light for unfastened seat belts in all seats)
- Heated seats for driver and front passenger (multi-stage adjustable)
- Solar Protect heat-insulating glazing (in the rear, heavily tinted)
- Start/Stop system (Driving assistant - Reinforced starter - AGM high-performance battery - eco switch to deactivate the start/stop function - Brake energy recuperation)
- Pre-installation for ISOFIX child seat mounting system (incl. top tether attachment points, rear outer)
- Central locking with remote control (and interior switch)



- 12V power outlet in the center console
- Electronic immobilizer
- Wireless Charging

Extra equipment

- Intelli-Drive 1.0 (Forward Collision Warning with Automatic Emergency Braking, Pedestrian Detection, Active Lane Keeping Assist, Traffic Sign Recognition and Driver Alert System, Cross Traffic Alert and Automatic Speed Assist with Stop Function, Blind Spot Warning)
- Paint finish: Metallic
- Wheels: Alloy wheels 7 J x 16 (5 double spokes) in silver with all-weather tires (with all-weather tires 205/55 R 16)

Brief expert findings

Documents submitted	At the time of the inspection, the vehicle registration certificate Part 2 (title) was available, but the vehicle registration certificate Part 1 (document) was not. (Copy)
VIN comparison	The vehicle identification number (VIN) was read from the vehicle and its conformity with the submitted documents was confirmed by the undersigned during the inspection.
Inspection	The inspection conditions were sufficient for the assessment of the vehicle. Lifting equipment and/or a pit were available for examining the vehicle.
Test drive	No test drive/shunting maneuver was carried out during the inspection of the vehicle.
Engine function test	An engine test run was performed.

Value reducing factors

No.	Component group	Description
1	Door - rear right side	Door (Ein leichter knick zusehen) - dent(s) - Smooth repair work
2	Door - front left side	Door - dent(s) - Smooth repair work

Previous damages

No.	Previous damage	Extent of damage (Net)
1	Front, Side - left, Provided by user / customer, from 3 Jul 2024	6.171,05 €

Repainting

No.	Repainting
1	Bonnet, Professionally carried out

Paint coat thickness measurement

Bonnet	239 µm
--------	--------

Order/Scope of Order

An order was placed to prepare a sales report for the described vehicle. This report includes the following:

- Description of key vehicle information
- Documentation of equipment features
(*Delivery by third-party service providers*)
- Documentation of damage, defects, missing parts
- Documentation of prior damage, unrepaired prior damage, repainting
- A brief visual or functional inspection of the equipment details, if possible.
(*Functional testing of driver assistance systems is not included in the scope of services!*)
- a photographic documentation of the vehicle



Basis for the order

This product is based on the guidelines for vehicle returns and valuations published by Alphabet Fleet GmbH. The expert makes the specific findings in each individual case objectively, within the framework of the prescribed standards, based on their own expertise.

The vehicle inspection takes place in a fully assembled, unassembled state.

Damage or defects that can only be detected during disassembly/diagnostic work or through further investigation remain within the realm of prognostic risk. An increased risk exists due to concealed defects caused by fraudulent misrepresentation and which were not identifiable by the expert.

Damage or defects resulting from normal use or wear and tear of the vehicle will be accepted in accordance with the applicable standard.

There was no explicit identification or monetary consideration of the expected features within the product.

Features which, in their nature and extent, slightly exceed normal use but do not constitute unacceptable damage, will be documented and indicated as signs of wear, if applicable.

Damage or defects that, according to the applicable standard, can no longer be attributed to normal use or wear and tear are listed under "Value Reducing Factors" in the product description.

Depending on the product specification, a monetary ID can be provided. If this takes place, the costs can be 100% d or pro rata depending on the vehicle's age and mileage.

Previous damages

According to available information previous damages were repaired at the vehicle. Traces of repairs, which allow conclusions about the area of repair, were not recognizable during the inspection.

Comments

Die Erstzulassung des Fahrzeuges liegt weit nach dem Produktionsende. Produktionszeitraum 12/2021 bis 04/2023.



Figure 1: Diagonal front (left)



Figure 2: Diagonal front (right)



Figure 3: Diagonal rear (left)



Figure 4: Diagonal rear (right)



Figure 5: Interior - front



Figure 6: Interior - rear



Figure 7: Instrument cluster



Figure 8: Instrument panel

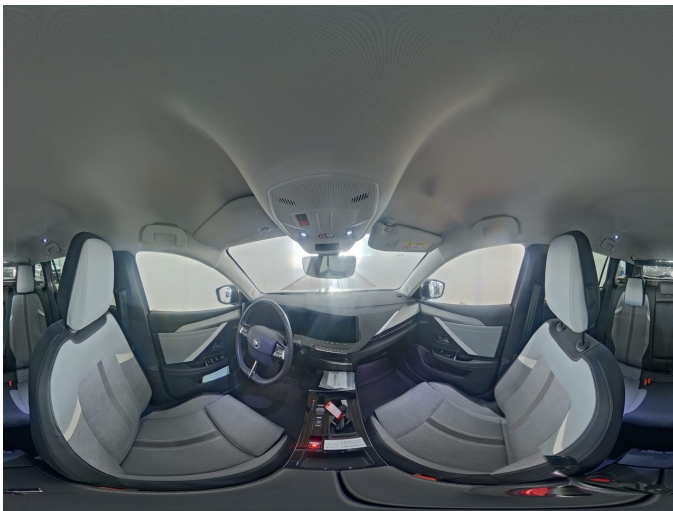


Figure 9: Interior 360° view



Figure 10: Cargo area

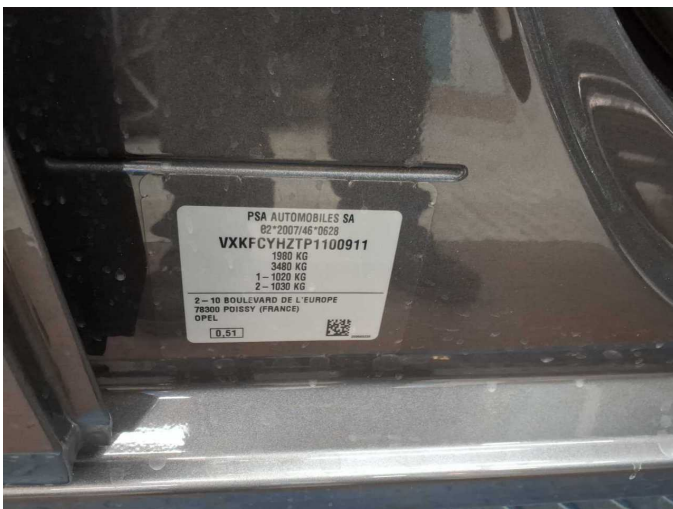


Figure 11: VIN



Figure 12: Mounted tyres

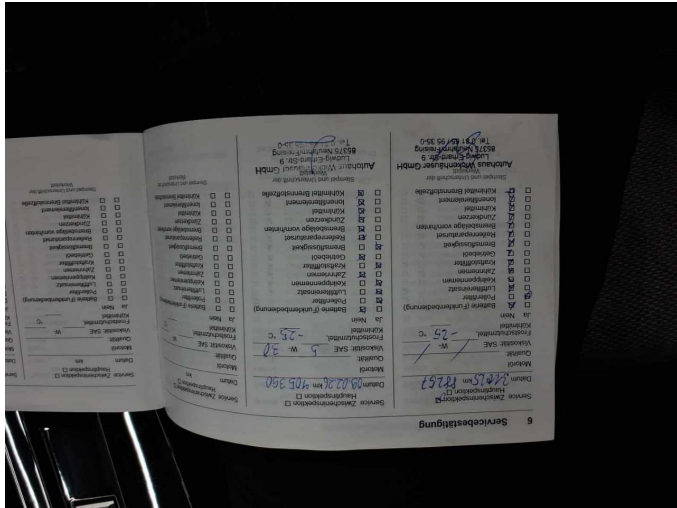


Figure 13: Documents



Figure 14: Documents



Figure 15: Documents



Figure 16: Navigation



Figure 17: Misc.



Figure 18: Misc.



Figure 19: Misc.



Figure 20: Misc.



Figure 21: Misc.



Figure 22: Misc.



Figure 23: Misc.



Figure 24: Misc.



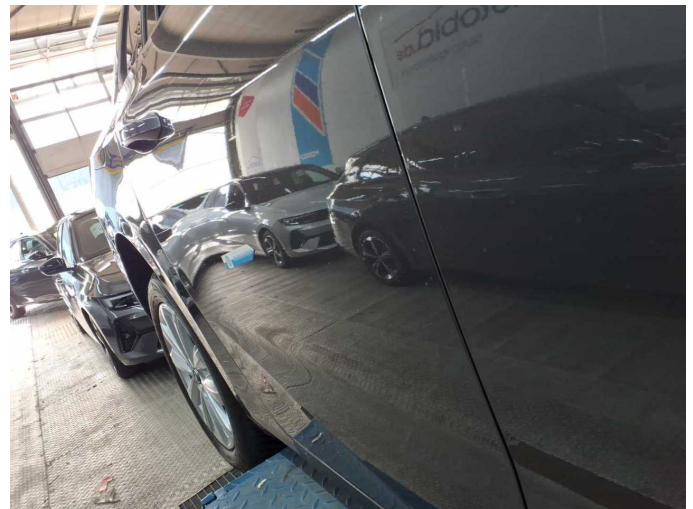
Figure 25: Misc.



Damage 1: Door - rear right side: Door (Ein leichter knick zusehen) - dent(s) - Smooth repair work



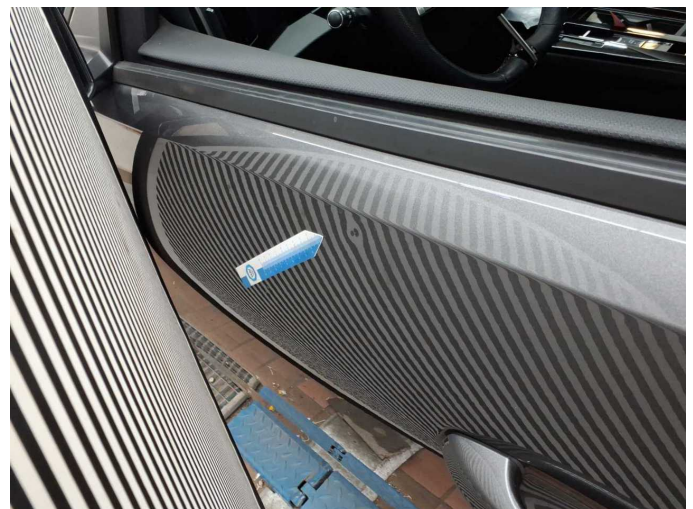
Damage 1: Door - rear right side: Door (Ein leichter knick zusehen) - dent(s) - Smooth repair work



Damage 1: Door - rear right side: Door (Ein leichter knick zusehen) - dent(s) - Smooth repair work



Damage 2: Door - front left side: Door - dent(s) - Smooth repair work



Damage 2: Door - front left side: Door - dent(s) - Smooth repair work



Repainting 1: Bonnet



Repainting 1: Bonnet