

Expertise

Protocol number: 45490018
Order No. / Reference: 26389562
Inspection date: 13 May 2026

Manufacturer: Mercedes-Benz

Model: GLE 350 de 4Matic 9G-TRONIC

VIN: W1N1671171A666892



Vehicle details

Manufacturer / Type / Model / Equipment

Mercedes-Benz GLE 350 de 4Matic 9G-TRONIC

Vehicle Identification number	W1N1671171A666892
Mileage (Read)	139,612 km
First registration	30 Mar 2022
Number of holders	1
Next periodical technical inspection (Report on hand)	03/2027

Power / Engine displacement	143 kw / 1,950 ccm
Fuel type / Cylinder	Hybr.D/E ext.auf1 / 4
Gearbox / Number of gears	Automatic / 9
Type of drive	All-wheel drive
Type of vehicle	SUV

Colour / colour code	MANUFAKTUR hyazinthrot metallic
Doors / Seats	5 / 5
Upholstery type	Leather
Colour of upholstery	Black



Vehicle details

Maintenance booklet / proof	digital proof / complete	Next maintenance in	144 Tag(e)
Last service on / at	09/2025 at 120,308 km		
Key is / should be	2 / 2	FZG documents	ZB#2 (B) was available (copy), ZB#1 (S) was not available.
		Letter No.	GF810456
Previous damage / Accident	None detectable	Repainting	None detectable
Inspection conditions	sufficient	Lifting equipment / pit	yes
Test drive	Not performed	Engine function test	Performed
Manufacturer key number/ type code number	2222 / AFH 00093		
Emission standard	EURO6;WLTP;AP;PI/CI; M, N1 I	fine dust sticker	
Permitted total weight	3,260 kg	Empty weight	

Tyres

Mounted tyres

#	Tyre size	Type of tyre	Manufacturer	Tread depth
1)	275/50 R20 113W	Summer tyres on Light alloy	Pirelli	4mm / 4mm
2)	275/50 R20 113W	Summer tyres on Light alloy	Pirelli	4mm / 4mm

Additional tyres

#	Tyre size	Type of tyre	Manufacturer	Tread depth
1)	275/50 R20 113V	Winter tyres on Light alloy	Continental	4mm / 4mm
2)	275/50 R20 113V	Winter tyres on Light alloy	Continental	6mm / 6mm

Legend: Tread depth information for the left tire is listed first, for the right tire it is listed second on the axle in the direction of travel.



Equipment

Standard equipment

- Exhaust system with 2 chrome-plated tailpipe trims
- Adaptive Highbeam Assist
- Airbag: Driver and passenger side
- Airbag: Sidebag for driver and front passenger (combined thorax/pelvisbag)
- Active Lane Keeping Assist
- 4MATIC permanent all-wheel drive
- Anti-lock braking system
- Foldable armrest for driver and front passenger
- ATTENTION ASSIST
- Brake Assist BAS
- Diesel particulate filter
- Tachometer
- EASY-Pack tailgate with electric operation for opening and closing
- Front door sills with "Mercedes-Benz" lettering illuminated in white
- Chassis with steel springs and lowered suspension
- electric parking brake
- Speed Limit Assistant
- Lockable, air-conditioned and illuminated glove compartment
- Mechanical child safety lock in the rear doors
- Communication module (LTE) for the use of Mercedes me connect services
- Charging cable for household socket, 5m, smooth
- Charging system: AC on-board charger 7.4 kW
- LED High Performance Headlights
- Steering column mechanically adjustable lengthwise and heightwise.
- Navigation accessories: Extended MBUX functions
- Navigation: Hard disk navigation
- Package: Chrome
- Package: Mirror Package
- Radio accessories: Digital radio (DAB)
- Tire pressure monitoring system (TPMS)
- Rear view camera
- Power steering
- Seats: 4-way lumbar support for driver and front passenger
- Seats: Rear seat backrests foldable
- Phone accessories: Smartphone integration
- High-visibility vest for drivers
- Widescreen Cockpit
- Central locking with interior switch
- ADAPTIVE BRAKE
- Adaptive brake light
- Airbag: Kneebag for driver
- Airbag: Windowbags
- Active Brake Assist
- Acoustic environmental protection
- Ambient lighting
- Traction control (ASR)
- Rear armrest
- Automatic passenger airbag deactivation
- Roof rails in aluminum look
- Downhill speed regulation (DSR)
- Third brake light
- EASY-Pack cargo cover (removable)
- ECO start/stop function
- Electronic Stability Program
- Electronic traction system for all-wheel drive (4ETS)
- Electric windows, front and rear
- Velour floor mats
- Transmission: 9G-TRONIC
- Rear window heated
- Rear window wiper with intermittent function
- Climate: THERMATIC automatic climate control
- Headrests 5-way
- Radiator grille with 2 chrome-plated louvers in SUV design
- Charging cable for wallboxes and public charging stations, 5m, smooth
- Steering wheel: Multifunction sports steering wheel in Nappa leather
- Mercedes-Benz emergency call system
- Navigation accessories: Pre-installation for navigation services
- Package: Public Charging
- PRE-SAFE system
- Radio accessories: Additional USB ports
- Remote Services Plus
- Windscreen wipers with rain sensor
- 3-point seat belts
- Seats: Heated seats for driver and front passenger seats
- Seats: Front seats electrically adjustable
- Cruise control with variable speed limiter
- Immobiliser
- Heat-insulating glass, all around



Extra equipment

- Towbar with ESP trailer stabilization
- Paint finish: MANUFAKTUR hyacinth red metallic
- Cargo area cover (with additional partition net).
- Steering wheel: Steering wheel heating
- Package: AMG Line Exterior (diamond grille with chrome pins, integrated Mercedes star and one louvre painted in matte iridium silver with chrome inserts - AMG Styling: AMG front apron with chrome trim strip, sporty and distinctive air intakes in the wheel arch trims, fender flares front and rear in body paint, AMG side sill trims, AMG rear apron with diffuser-look insert in black and chrome trim strip - AMG light-alloy wheels in 5-twin-spoke design, painted tremolite grey and polished with front axle 275/50 R 20 on 9 J x 20 ET 57, rear axle 275/50 R 20 on 9 J x 20 ET 44)
- Package: Memory Package in conjunction with leather upholstery (driver and front passenger seats, steering column and exterior mirrors electrically adjustable and storable - seat longitudinal position and headrest height additionally electrically adjustable - 4-way lumbar support for driver and front passenger - seat cushion depth adjustment with gapless cushion - PRE-SAFE positioning function for the front passenger seat - front passenger seat controls for driver)
- Package: Parking Package with 360° camera (12 sensors: four front, four rear, two on the sides in the front/rear bumper; detects parking spaces up to 35 km/h; steering control; in conjunction with automatic transmission, assists with acceleration, braking, and gear changes; 360° camera; visual/audible warning of detected obstacles in front of/behind the vehicle up to approx. 10 km/h; Rear Cross Traffic Alert warns of detected cross traffic; Drive Away Assist (only in conjunction with automatic transmission); button on the center console or on the control panel for the assistance systems)
- Radio accessories: Burmester surround sound system (with 13 speakers and 590 watts system power. Experience enhanced performance and exclusivity with legendary Burmester sound. The high-performance speakers create a first-class surround sound experience. This can be specifically optimized for the front and rear seats, intensifying the listening experience. A quality that is also visible thanks to the high-quality Burmester logos.)
- Protection and preservation (The reversible mat helps in two ways: With its fine velour side, it effectively protects the cargo area from dirt, while its rubberized side prevents cargo from slipping. The foldable zigzag loading sill protector with Velcro fastening can prevent clothing from getting dirty or the paintwork from being scratched during loading and unloading.)
- Roof rack (Expand your transport options. You can combine the base carrier with a variety of Mercedes-Benz roof accessories – such as roof boxes, bicycle carriers or ski racks. It is precisely matched to the body and offers the best possible safety and aerodynamics.)
- Heat-insulating dark tinted glass
- Decorative elements: Open-pore anthracite oak wood
- Black fabric headliner
- Charging cable for wallbox and public charging stations, 8m, smooth (This charging cable, also called Mode 3 cable, allows you to charge the vehicle battery at the wallbox or at public charging stations with up to 11 kW (Type 2, 3-phase, 16 A).)
- Package: Driving Assistance Package Plus (Active Distance Assist DISTRONIC - Active Steering Assist - Active Brake Assist - Evasive Steering Assist - Active Lane Keeping Assist - Active Blind Spot Assist - PRE-SAFE PLUS - Active Traffic Jam Assist)
- Package: KEYLESS-GO Comfort Package (vehicle key with KEYLESS-GO functionality - KEYLESS-GO access and drive authorization system - start/stop button - comfort opening and closing - door handles with chrome inlay - HANDS-FREE ACCESS - handle recess lighting - remote trunk lid closing - EASY-PACK luggage compartment lid)
- Package: Night (Diamond grille with chrome pins and high-gloss black louvre; AMG light-alloy wheels in 5-twin-spoke design, high-gloss black lacquer and gloss black, with front axle 275/50 R 20 on 9.0 x 20 ET 57, rear axle 275/50 R 20 on 9.0 x 20 ET 44; AMG front windscreen in A-wing design with high-gloss black trim strip; AMG rear windscreen with high-gloss black diffuser and high-gloss black trim strip; air intakes in radiator grille and front windscreen; roof rails in matte black; heat-insulating dark-tinted glass from the B-pillar; exterior mirror housings in high-gloss black; window trim and beltline trim in black)
- Upholstery: Leather (seat cushion depth and front headrests electrically adjustable)
- PRE-SAFE Impulse Side (can prepare you and your front passenger for a side impact with a lateral impulse and reduce the risk of injury. The system can move you from the side facing the accident towards the center of the vehicle. This can have a positive effect in a side impact.)
- Wheels: 50.8 cm (20") AMG light-alloy wheels in 5-twin-spoke design (tremolite grey painted and high-sheen finish with front axle 275/50 R 20 on 9.0 J x 20 ET 57, rear axle 275/50 R 20 on 9.0 J x 20 ET 44)
- Heated windshield washer system (including washer fluid reservoir, washer nozzles and washer fluid hoses)
- Sunroof: Panoramic sunroof (large glass module made of heat-insulating, tinted safety glass - mesh wind deflector in the front area - electric sunshade with one-touch operation - comprehensive protection concept: - anti-pinch protection - automatic rain closing - PRE-SAFE closing function (only in conjunction with PRE-SAFE system))



- Seats: Multicontour seats for driver and front passenger (driver and front passenger seats fully electrically adjustable via the switches in the door control panel: - Seat cushion depth adjustment - Seat cushion tilt adjustment - Seat longitudinal adjustment - Seat height adjustment - Seat backrest tilt adjustment - Headrest adjustment (horizontal and vertical) - 4-way lumbar support - Comfort headrests - Active cushions with inflatable air chambers in the lower seat back and side bolsters - Hot stone massage effect in the lumbar region - Seat heating plus - Front seat ventilation)

Brief expert findings

Documents submitted	At the time of the inspection, the vehicle registration certificate Part 2 (title) was available, but the vehicle registration certificate Part 1 (document) was not. (Copy)
VIN comparison	The vehicle identification number (VIN) was read from the vehicle and its conformity with the submitted documents was confirmed by the undersigned during the inspection.
Inspection	The inspection conditions were sufficient for the assessment of the vehicle. Lifting equipment and/or a pit were available for examining the vehicle.
Test drive	No test drive/shunting maneuver was carried out during the inspection of the vehicle.
Engine function test	An engine test run was performed.

Value reducing factors

No.	Component group	Description
1	Rear bumper	Spoiler - Scratch(es) - Loss in value
2	Seat - front	Backrest cover - left side (Lehnenschale) - Scratch(es) - Smart repair
3	Seat - front	Backrest cover - right side (Lehnenschale) - Scratched - Replace

Wear and tear

No.	Component group	Description
1	Front bumper	Front bumper - Stone chips - No deduction
2	Bonnet	Bonnet - Stone chips - No deduction
3	Vehicle glazing	Windscreen - Stone chips - No deduction
4	Door - rear right side	Door - Stone chips - No deduction

The vehicle shows signs of wear and tear commensurate with its age and use.

Order/Scope of Order

An order was placed to prepare a sales report for the described vehicle. This report includes the following:

- Description of key vehicle information
- Documentation of equipment features
(*Delivery by third-party service providers*)
- Documentation of damage, defects, missing parts
- Documentation of prior damage, unrepaired prior damage, repainting
- A brief visual or functional inspection of the equipment details, if possible.
(*Functional testing of driver assistance systems is not included in the scope of services!*)
- a photographic documentation of the vehicle



Basis for the order

This product is based on the guidelines for vehicle returns and valuations published by Alphabet Fleet GmbH. The expert makes the specific findings in each individual case objectively, within the framework of the prescribed standards, based on their own expertise.

The vehicle inspection takes place in a fully assembled, unassembled state.

Damage or defects that can only be detected during disassembly/diagnostic work or through further investigation remain within the realm of prognostic risk. An increased risk exists due to concealed defects caused by fraudulent misrepresentation and which were not identifiable by the expert.

Damage or defects resulting from normal use or wear and tear of the vehicle will be accepted in accordance with the applicable standard.

There was no explicit identification or monetary consideration of the expected features within the product.

Features which, in their nature and extent, slightly exceed normal use but do not constitute unacceptable damage, will be documented and indicated as signs of wear, if applicable.

Damage or defects that, according to the applicable standard, can no longer be attributed to normal use or wear and tear are listed under "Value Reducing Factors" in the product description.

Depending on the product specification, a monetary ID can be provided. If this takes place, the costs can be 100% d or pro rata depending on the vehicle's age and mileage.

Previous damages

No apparent prior damage that had been repaired could be found on the vehicle.



Figure 1: Diagonal front (left)



Figure 2: Diagonal front (right)



Figure 3: Diagonal rear (left)



Figure 4: Diagonal rear (right)

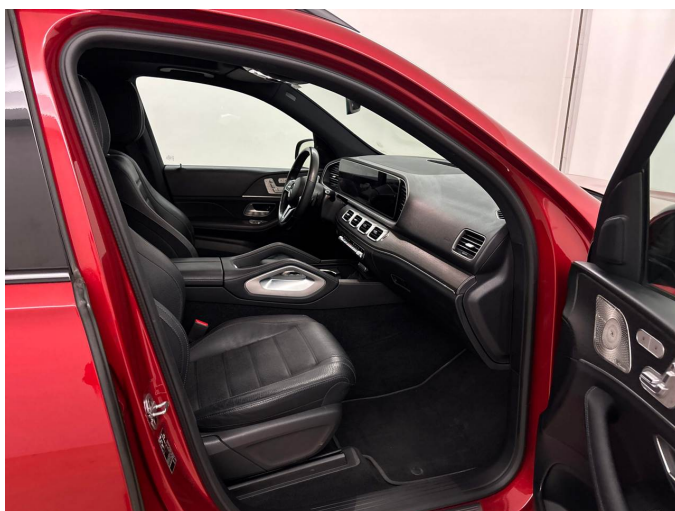


Figure 5: Interior - front



Figure 6: Interior - rear



Figure 7: Instrument cluster



Figure 8: Instrument panel



Figure 9: Interior 360° view



Figure 10: Cargo area



Figure 11: VIN



Figure 12: Mounted tyres



Figure 13: Documents



Figure 14: Documents

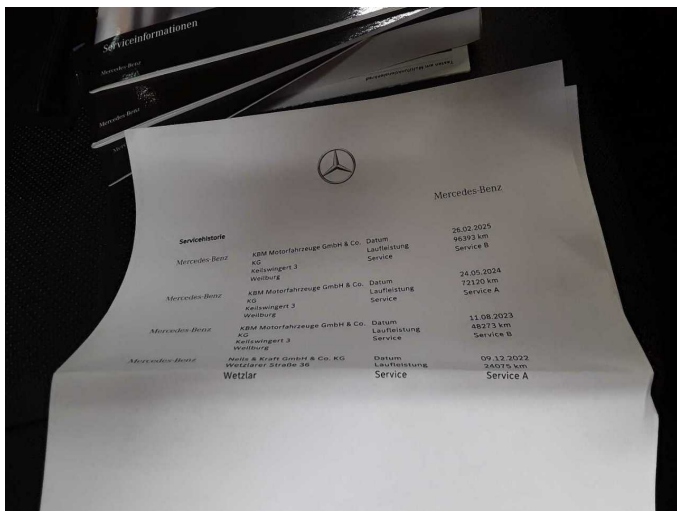


Figure 15: Documents

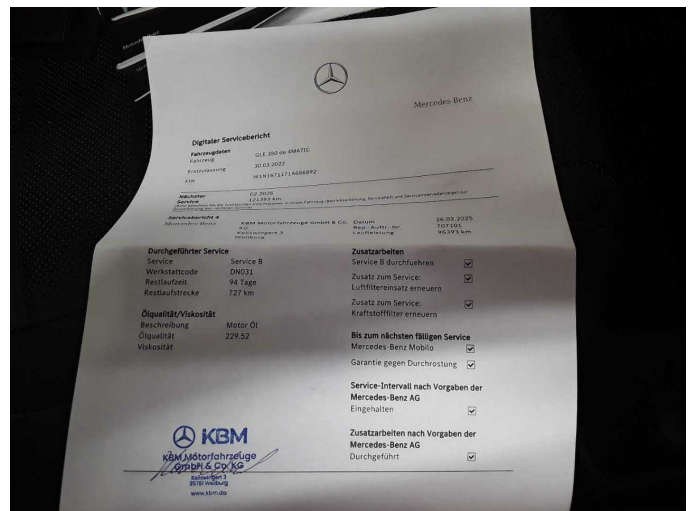


Figure 16: Documents



Figure 17: Documents



Figure 18: Additional tyres



Figure 19: Navigation



Figure 20: Misc.

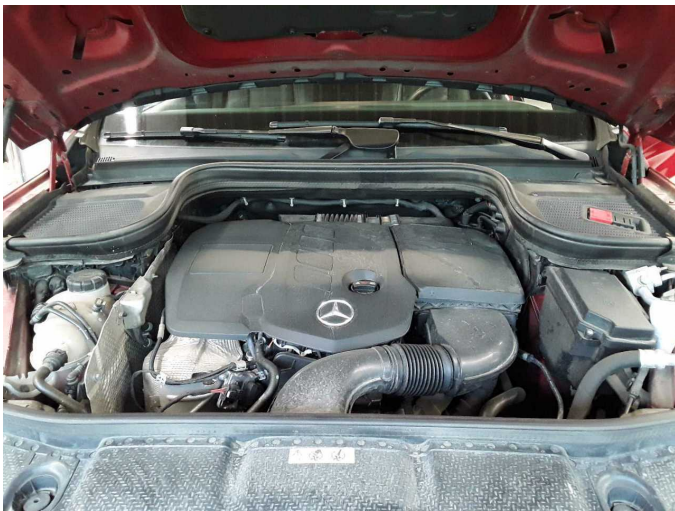


Figure 21: Misc.



Figure 22: Misc.



Figure 23: Misc.



Figure 24: Misc.

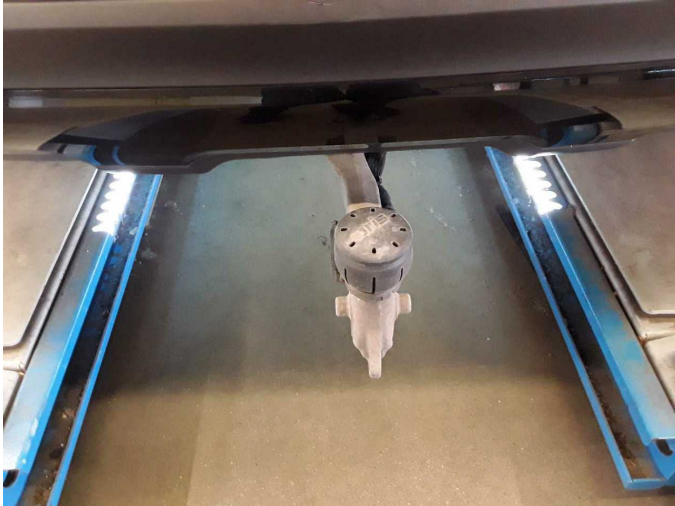


Figure 25: Misc.



Figure 26: Misc.



Figure 27: Misc.



Figure 28: Misc.

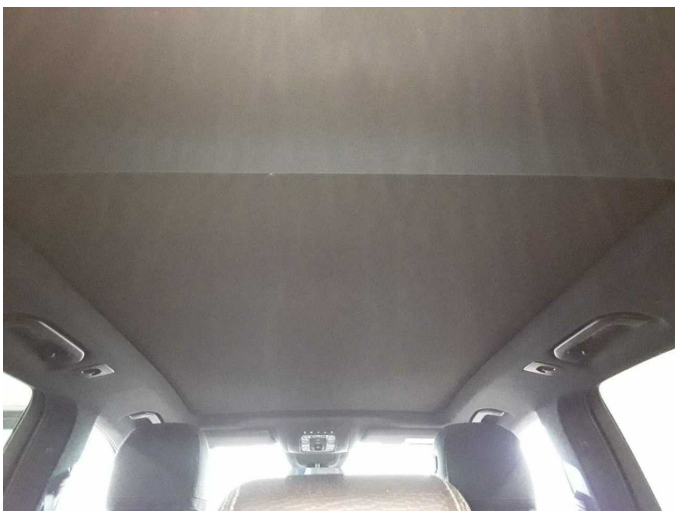


Figure 29: Misc.



Figure 30: Misc.



Figure 31: Misc.



Figure 32: Misc.



Figure 33: Misc.



Figure 34: Misc.



Figure 35: Misc.



Figure 36: Misc.



Figure 37: Misc.



Figure 38: Misc.



Figure 39: Misc.



Figure 40: Misc.



Figure 41: Misc.



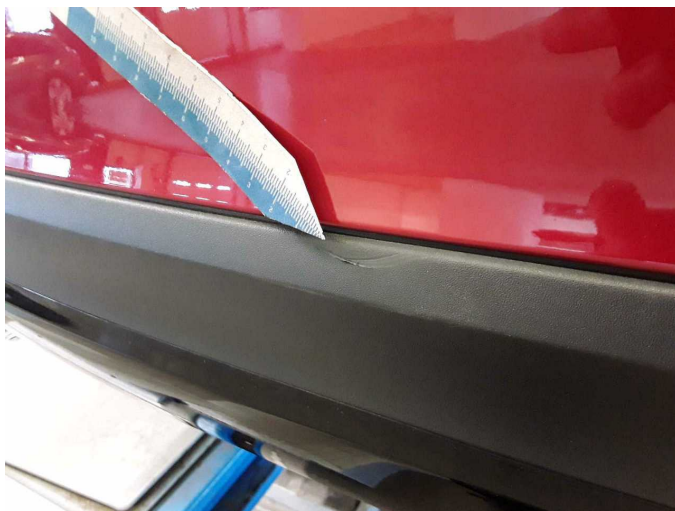
Figure 42: Misc.



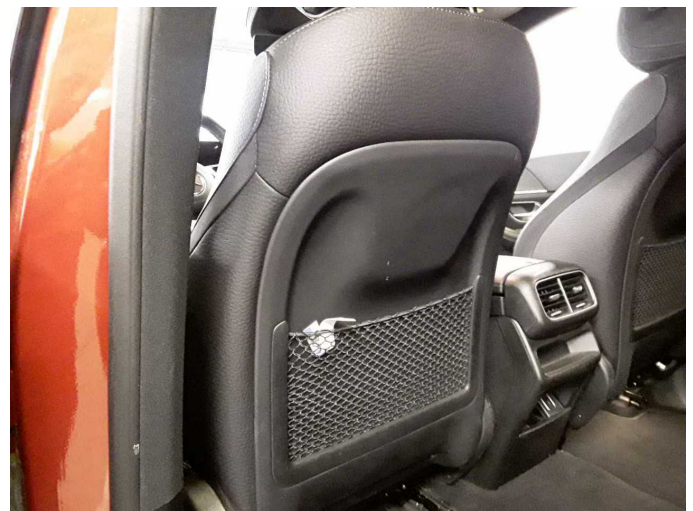
Figure 43: Misc.



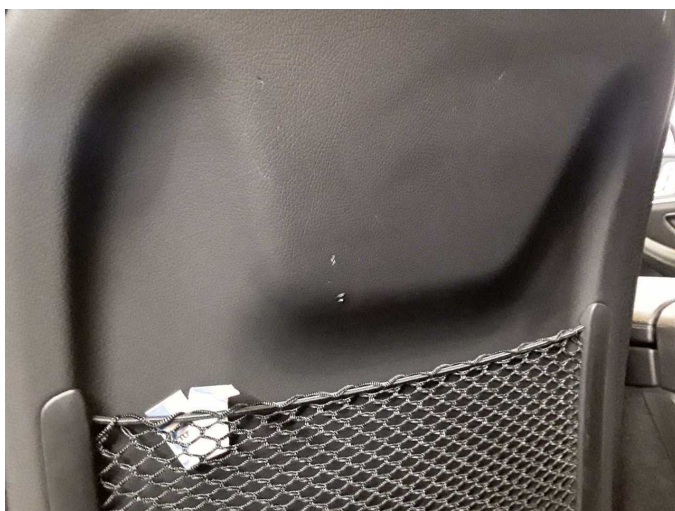
Damage 1: Rear bumper: Spoiler - Scratch(es) - Loss in value



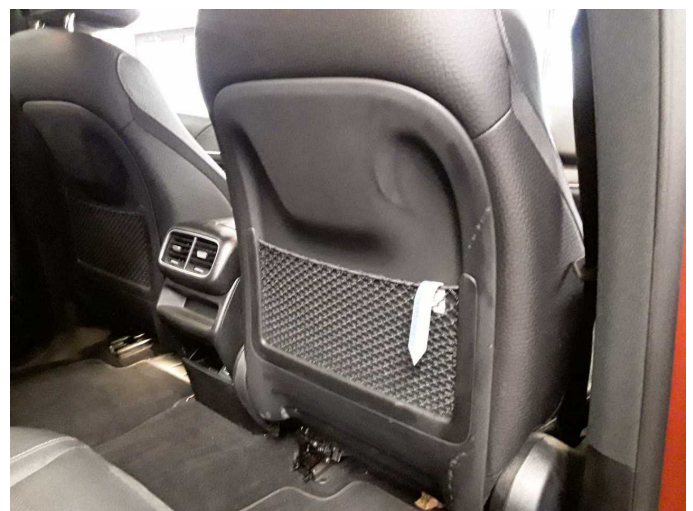
Damage 1: Rear bumper: Spoiler - Scratch(es) - Loss in value



Damage 2: Seat - front: Backrest cover - left side (Lehnenschale) - Scratch(es) - Smart repair



Damage 2: Seat - front: Backrest cover - left side (Lehnenschale) - Scratch(es) - Smart repair



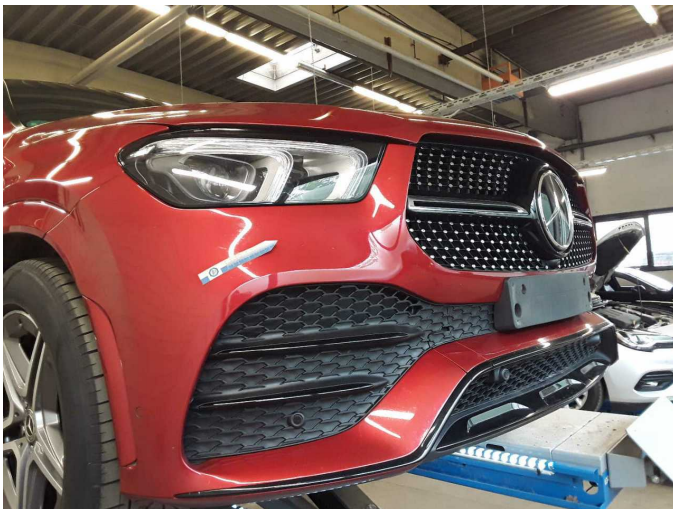
Damage 3: Seat - front: Backrest cover - right side (Lehnenschale) - Scratched - Replace



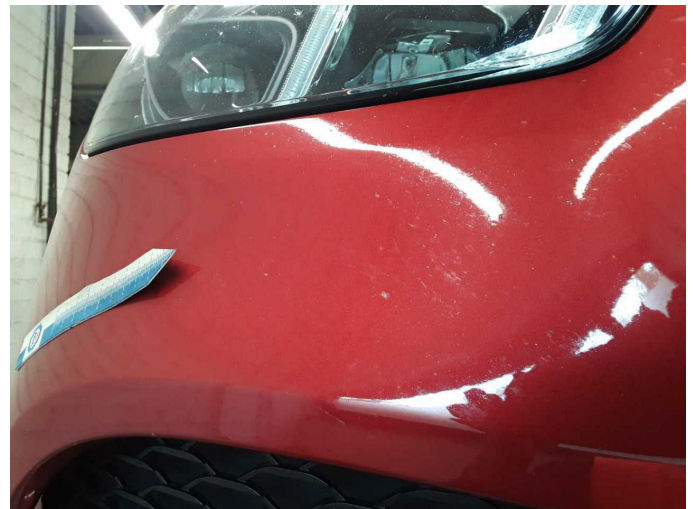
Damage 3: Seat - front: Backrest cover - right side (Lehenschale) - Scratched - Replace



Damage 3: Seat - front: Backrest cover - right side (Lehenschale) - Scratched - Replace



Wear and tear 1: Front bumper: Front bumper - Stone chips - No deduction



Wear and tear 1: Front bumper: Front bumper - Stone chips - No deduction



Wear and tear 1: Front bumper: Front bumper - Stone chips - No deduction



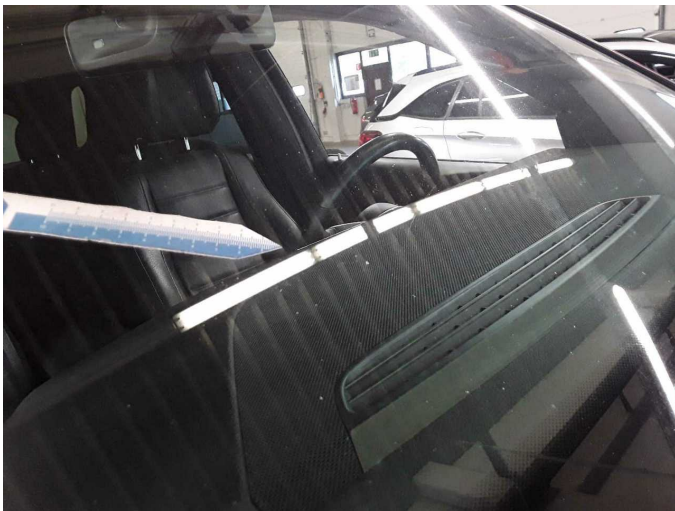
Wear and tear 2: Bonnet: Bonnet - Stone chips - No deduction



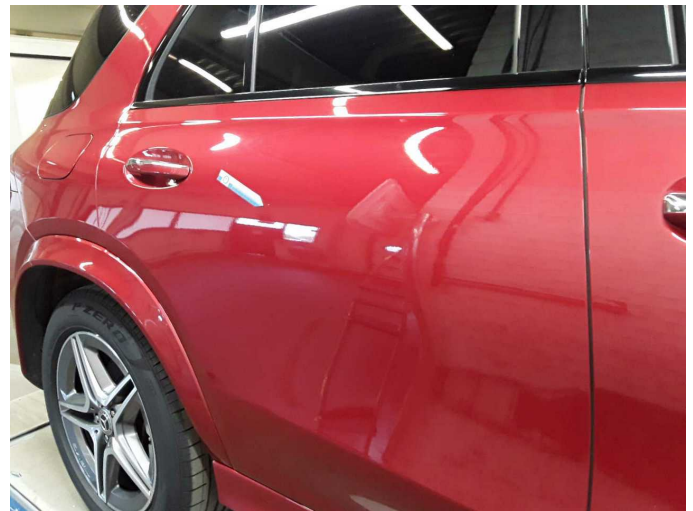
Wear and tear 2: Bonnet: Bonnet - Stone chips - No deduction



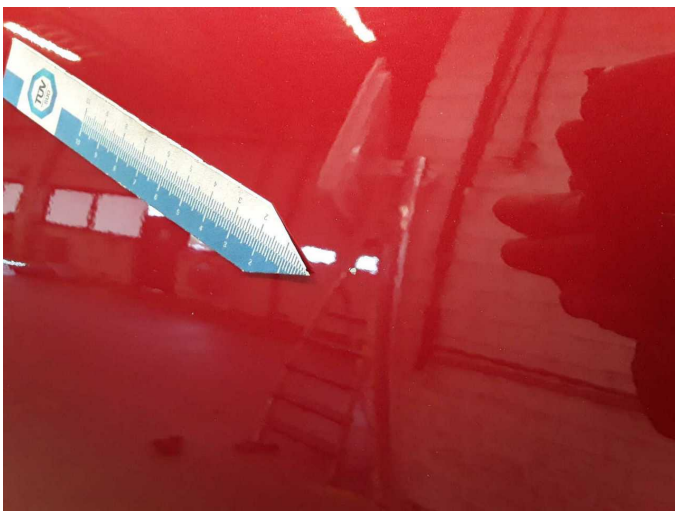
Wear and tear 3: Vehicle glazing: Windscreen - Stone chips - No deduction



Wear and tear 3: Vehicle glazing: Windscreen - Stone chips - No deduction



Wear and tear 4: Door - rear right side: Door - Stone chips - No deduction



Wear and tear 4: Door - rear right side: Door - Stone chips - No deduction



Wartungshistorie

(gemäß Auftraggeber Informationen)

Fahrgestellnummer: W1N1671171A666892
Hersteller / Modell: MERCEDES-BENZ MERCEDES-BENZ GLE 350 de 4Matic 9G-TRONIC

Datum	KM-Stand	Beschreibung
08.10.2025	120.308	Systemtest/Eigendiagnose; Wartung Sonstiges
29.09.2025	120.308	Regelwartungsdienst
14.03.2025	96.393	AU
26.02.2025	96.393	Regelwartungsdienst
31.12.2024	89.347	Reparatur Sonstiges; Systemtest/Eigendiagnose
24.05.2024	72.120	Regelwartungsdienst
11.08.2023	48.273	Regelwartungsdienst
09.12.2022	24.078	Regelwartungsdienst