

Expertise

Protocol number: 46315606
Order No. / Reference: 26527816
Inspection date: 3 Jul 2026

Manufacturer: Opel

Model: Astra 1.2 Turbo Automatik Business Elegance

VIN: VXKFPHNSTP1007412



Vehicle details

Manufacturer / Type / Model / Equipment

Opel Astra 1.2 Turbo Automatik Business Elegance

Vehicle Identification number VXKFPHNSTP1007412

Mileage (Read) 84,908 km

First registration 19 May 2023

Number of holders 1

Power / Engine displacement 96 kw / 1,199 ccm

Fuel type / Cylinder Petrol / 3

Gearbox / Number of gears Automatic / 8

Type of drive Front drive

Type of vehicle Saloon car

Colour / colour code Kardio Rot Metallic

Doors / Seats 5 / 5

Upholstery type Cloth / leather combination

Colour of upholstery Grey-Black



Equipment

Equipment

- Klimaanlage

Standard equipment

- Storage compartments
- Airbag: Front airbags, driver and front passenger
- Airbag: Front and rear outer head airbags
- Automatic activation of the hazard warning lights
- Exterior mirror housings in black
- On-board computer
- Tachometer
- Electronic Stability Program (ESP) and Traction Control with engine and brake intervention (TCPlus)
- Transmission: 8-speed automatic transmission
- rear window wiper
- Wiring harness for trailer hitch
- Dual-zone automatic climate control
- Paintwork: Roof in car color
- LED interior lighting
- Steering wheel: Leather steering wheel, flattened, perforated, with steering wheel remote control and paddle shifters
- Navigation system
- Otto particulate filter
- Tire repair kit
- Wheels: Alloy wheels 7.5 J x 17 (5 spokes) in silver/black
- Rear seat backrest folds forward in a 60:40 split
- Seat belts: Three-point seat belts in all seats
- Heated seats, driver and passenger
- Solar Protect thermal insulation glazing
- 12V power outlet in the center console
- Electronic immobilizer
- Central locking with remote control
- Airbag: Chest-pelvis-side airbags, driver and front passenger
- Anti-lock braking system (ABS)
- Exterior mirrors, electrically adjustable, heated and folding
- Hill Start Assist
- third brake light
- Electronic brake force distribution (EBD)
- Electric windows front and rear
- Front collision warning system
- Back window, heater
- Interior rearview mirror, automatically dimming
- Air conditioning: Intelli-Air air quality system "Clean Cabin"
- Front headrests and 3 rear headrests, height adjustable
- LED ambient lighting
- LED headlights
- Steering wheel heating
- Illuminated makeup mirrors in both sun visors
- Center armrest, front and rear
- Fog light
- Electric parking brake
- Tire pressure monitoring system
- 180-degree reversing camera
- Keyless locking and starting system Keyless Open & Start
- Seats: Ergonomic active driver's seat, fabric/premium leatherette Isabella
- Start/Stop System
- Pre-wiring for ISOFIX child seat mounting system
- Wireless Charging

Extra equipment

- Intelli-Drive 1.0 (Forward Collision Warning with Automatic Emergency Braking, Pedestrian Detection, Active Lane Keeping Assist, Traffic Sign Recognition and Driver Alert System, Cross Traffic Alert and Automatic Speed Assist with Stop Function, Blind Spot Warning)
- Paint finish: Metallic Cardio Red

Brief expert findings

Documents submitted	At the time of the inspection, the vehicle registration certificate Part 2 (title) was available, but the vehicle registration certificate Part 1 (document) was not. (Copy)
VIN comparison	The vehicle identification number (VIN) was read from the vehicle and its conformity with the submitted documents was confirmed by the undersigned during the inspection.
Inspection	The inspection conditions were sufficient for the assessment of the vehicle. Lifting equipment and/or a pit were available for examining the vehicle.
Test drive	No test drive/shunting maneuver was carried out during the inspection of the vehicle.
Engine function test	An engine test run was performed.



Value reducing factors

No.	Component group	Description
1	2nd wheel set	1 alloy rim (gehört nicht zur Ausstattung) - Scratched - No deduction
2	Instrument panel	Indicator light (Reifenfruck) - on - Perform diagnosis
3	Engine	Engine cover - Damaged - Replace
4	Wheel / tyres	Tyre - front right side (Flanke) - Damaged - Replace

Wear and tear

No.	Component group	Description
1	Bonnet	Bonnet - Stone chips - No deduction
2	Body	A-pillar - right side - Stone chips - No deduction

The vehicle shows signs of wear and tear commensurate with its age and use.

Previous damages

No.	Previous damage	Extent of damage (Net)
1	Rear, Provided by user / customer, from 11 Apr 2025	992,75 €

Order/Scope of Order

An order was placed to prepare a sales report for the described vehicle. This report includes the following:

- Description of key vehicle information
- Documentation of equipment features
(*Delivery by third-party service providers*)
- Documentation of damage, defects, missing parts
- Documentation of prior damage, unrepaired prior damage, repainting
- A brief visual or functional inspection of the equipment details, if possible.
(*Functional testing of driver assistance systems is not included in the scope of services!*)
- a photographic documentation of the vehicle

Basis for the order

This product is based on the guidelines for vehicle returns and valuations published by Alphabet Fleet GmbH. The expert makes the specific findings in each individual case objectively, within the framework of the prescribed standards, based on their own expertise.

The vehicle inspection takes place in a fully assembled, unassembled state.

Damage or defects that can only be detected during disassembly/diagnostic work or through further investigation remain within the realm of prognostic risk. An increased risk exists due to concealed defects caused by fraudulent misrepresentation and which were not identifiable by the expert.

Damage or defects resulting from normal use or wear and tear of the vehicle will be accepted in accordance with the applicable standard.

There was no explicit identification or monetary consideration of the expected features within the product.

Features which, in their nature and extent, slightly exceed normal use but do not constitute unacceptable damage, will be documented and indicated as signs of wear, if applicable.

Damage or defects that, according to the applicable standard, can no longer be attributed to normal use or wear and tear are listed under "Value Reducing Factors" in the product description.

Depending on the product specification, a monetary ID can be provided. If this takes place, the costs can be 100% d or pro rata depending on the vehicle's age and mileage.



Previous damages

According to available information previous damages were repaired at the vehicle. Traces of repairs, which allow conclusions about the area of repair, were not recognizable during the inspection.

Comments

Wartungshistorie gemäß Auftraggeber Informationen.

Der beiliegende Radsatz ist nicht Bestandteil der vorliegenden Fahrzeugausstattung.



Figure 1: Diagonal front (left)



Figure 2: Diagonal front (right)



Figure 3: Diagonal rear (left)



Figure 4: Diagonal rear (right)



Figure 5: Interior - front



Figure 6: Interior - rear



Figure 7: Instrument cluster



Figure 8: Instrument panel



Figure 9: Interior 360° view

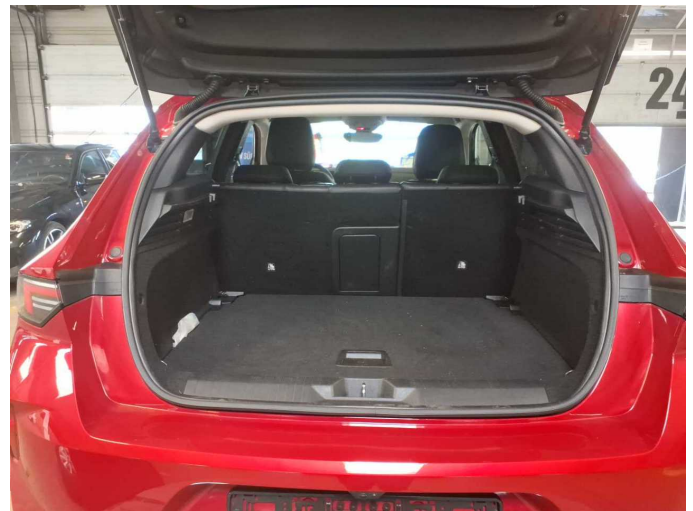


Figure 10: Cargo area

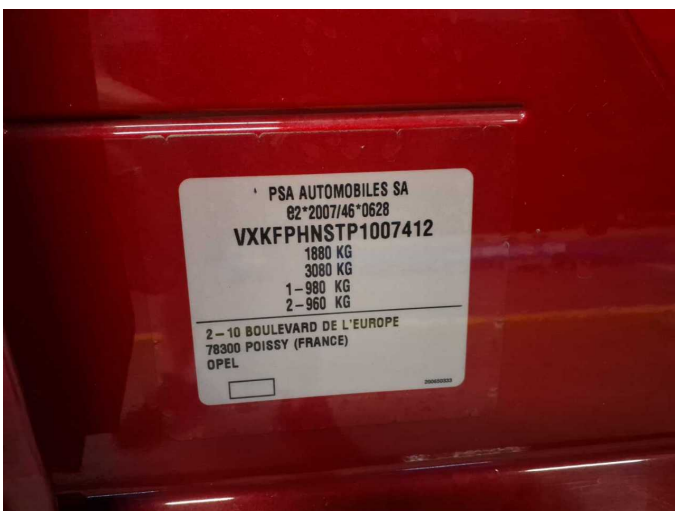


Figure 11: VIN



Figure 12: Mounted tyres



Figure 13: Documents

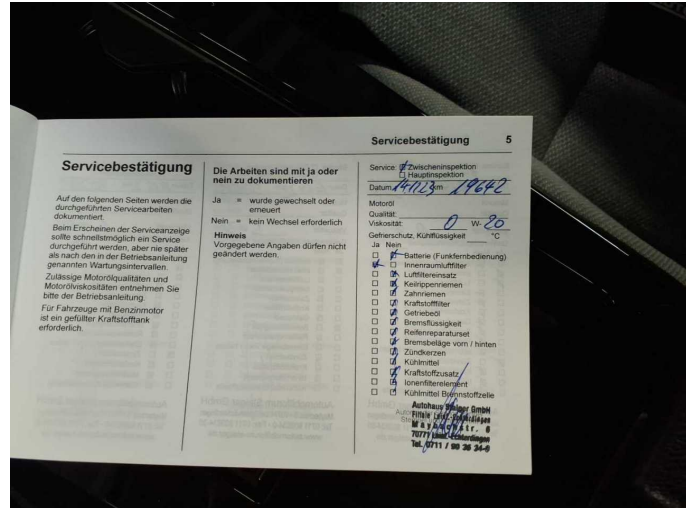


Figure 14: Documents

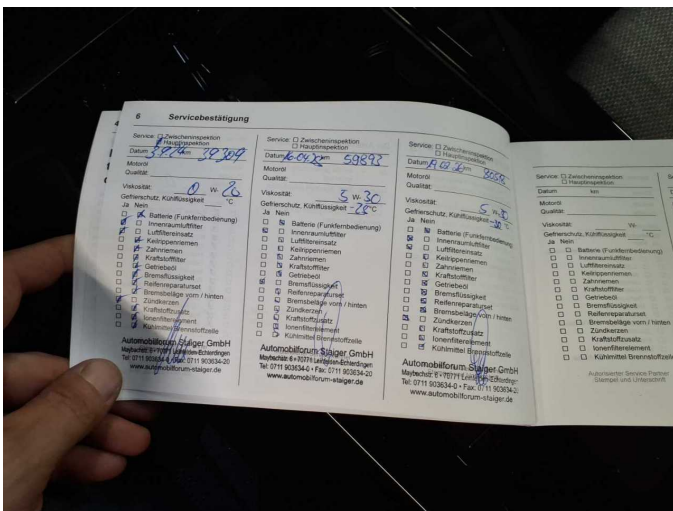


Figure 15: Documents



Figure 16: Additional tyres

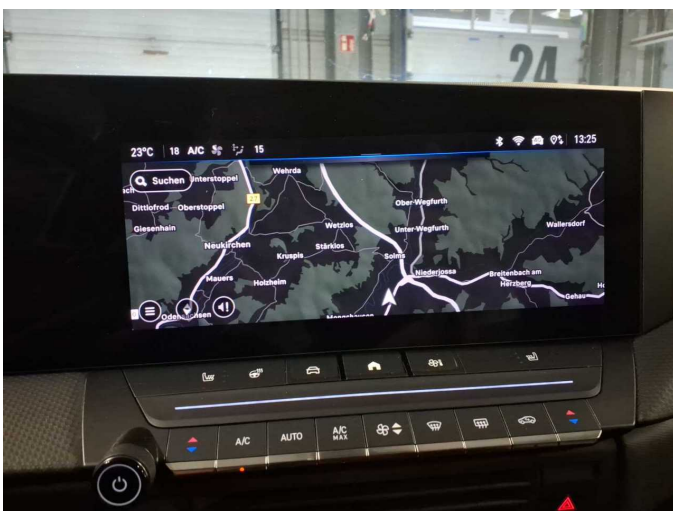


Figure 17: Navigation



Figure 18: Misc.



Figure 19: Misc.



Figure 20: Misc.

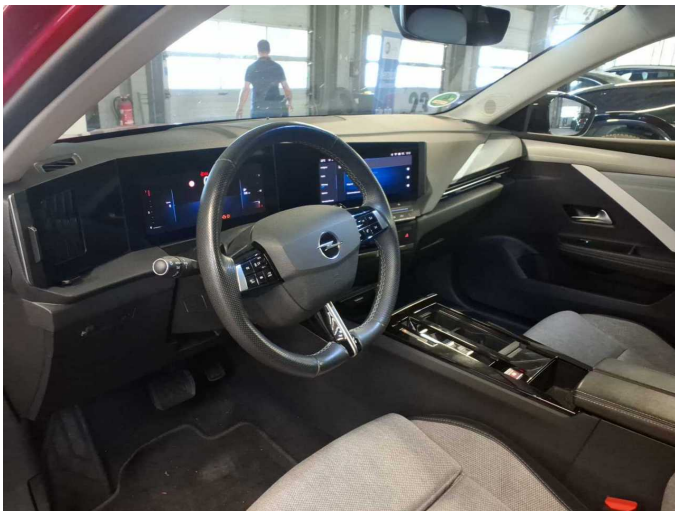


Figure 21: Misc.



Figure 22: Misc.

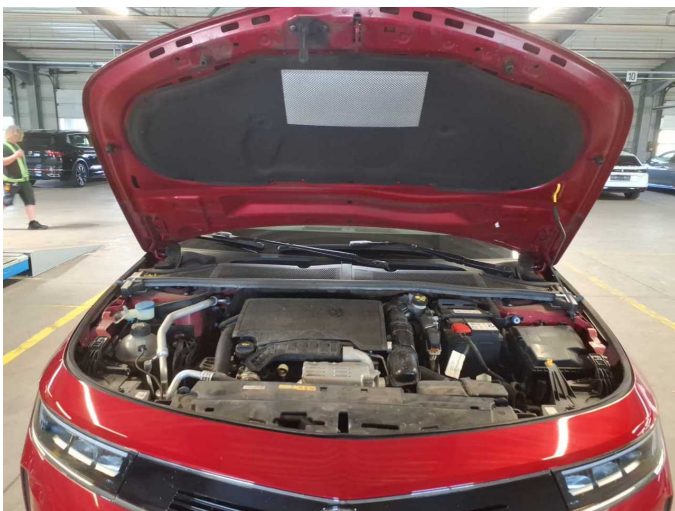


Figure 23: Misc.

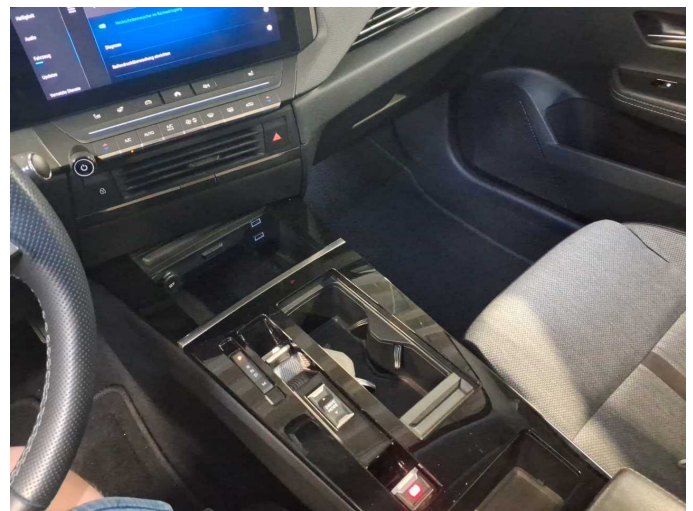


Figure 24: Misc.



Figure 25: Misc.



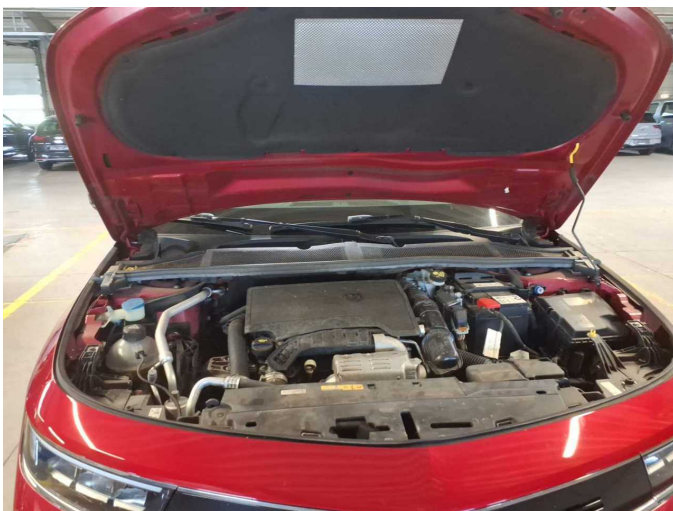
Figure 26: Misc.



Figure 27: Misc.



Figure 28: Misc.



Damage 3: Engine: Engine cover - Damaged - Replace



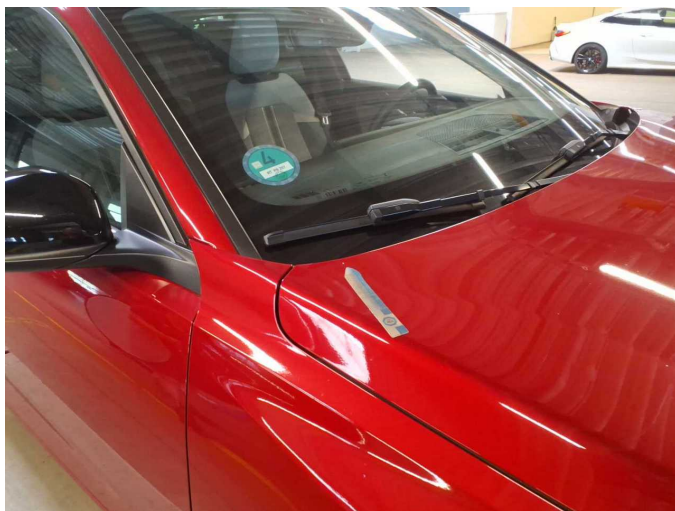
Damage 3: Engine: Engine cover - Damaged - Replace



Damage 4: Wheel / tyres: Tyre - front right side (Flanke) - Damaged - Replace



Damage 4: Wheel / tyres: Tyre - front right side (Flanke) - Damaged - Replace



Wear and tear 1: Bonnet: Bonnet - Stone chips - No deduction



Wear and tear 1: Bonnet: Bonnet - Stone chips - No deduction



Wear and tear 2: Body: A-pillar - right side - Stone chips - No deduction



Wear and tear 2: Body: A-pillar - right side - Stone chips - No deduction



Wartungshistorie

(gemäß Auftraggeber Informationen)

Fahrgestellnummer: VXXKFPHNSTP1007412

Hersteller / Modell: OPEL OPEL Astra 1.2 Turbo Automatik Business Elegance

Datum	KM-Stand	Beschreibung
19.02.2026	80.518	Luftfiltereinsatz ern; Motoröl b. Wartung; Ölfilter ern; Regelwartungsdienst; Wartung Sonstiges; Zündkerzen ern
07.05.2025	59.893	Bremse Sonstiges; Bremsflüssigkeit; Bremsflüssigkeit ern; Bremsklötze vorne; Bremsscheiben vorne; Motoröl b. Wartung; Ölfilter ern; Regelwartungsdienst; Wartung Sonstiges
03.09.2024	39.309	Luftfiltereinsatz ern; Motoröl b. Wartung; Ölfilter ern; Regelwartungsdienst; Wartung Sonstiges; Zündkerzen ern
14.12.2023	19.642	Motoröl b. Wartung; Ölfilter ern; Regelwartungsdienst; Wartung Sonstiges