

Expertise

Protocol number: 45745776
Order No. / Reference: 26521269
Inspection date: 2 Jun 2026

Manufacturer: Mercedes-Benz

Model: C 200 d T 9G-TRONIC

VIN: W1KAH0DB4PF123063



Vehicle details

Manufacturer / Type / Model / Equipment

Mercedes-Benz C 200 d T 9G-TRONIC

Vehicle Identification number W1KAH0DB4PF123063

Mileage (Read) 117,209 km

First registration 18 Jul 2023

Number of holders 1

Power / Engine displacement 120 kw / 1,993 ccm

Fuel type / Cylinder Hybrid Diesel / E / 4

Gearbox / Number of gears Automatic / 9

Type of drive Rear drive

Type of vehicle Station wagon

Colour / colour code OBSIDIANSCHWARZ -
METALLICLACK

Doors / Seats 5 / 5

Upholstery type Cloth

Colour of upholstery Black-Anthracite

Vehicle with smoke odor no



Vehicle details

Maintenance booklet / proof	digital proof / complete	Next maintenance in	117 Tag(e)
Last service on / at	08/2025 at 99,571 km		
Key is / should be	2 / 2	FZG documents	ZB#2 (B) was available (copy), ZB#1 (S) was not available.
		Letter No.	GV709086
Previous damage / Accident	Detectable	Repainting	None detectable
Inspection conditions	sufficient	Lifting equipment / pit	yes
Test drive	short drive on the company premises	Engine function test	Performed
Manufacturer key number/ type code number	2222 / BDF 00259		
Emission standard	EURO6;WLTP;AP;PI/CI; M, N1 I	fine dust sticker	
Permitted total weight	2,400 kg	Empty weight	

Tyres

Mounted tyres				
#	Tyre size	Type of tyre	Manufacturer	Tread depth
1)	205/55 R17 91H	Winter tyres on Light alloy	Continental	3mm / 3mm
2)	205/55 R17 91H	Winter tyres on Light alloy	Continental	5mm / 5mm
Additional tyres				
#	Tyre size	Type of tyre	Manufacturer	Tread depth
1)	205/55 R17 91W	Summer tyres on Light alloy	Pirelli	5mm / 5mm
2)	205/55 R17 91W	Summer tyres on Light alloy	Pirelli	5mm / 5mm

Legend: Tread depth information for the left tire is listed first, for the right tire it is listed second on the axle in the direction of travel.



Equipment

Standard equipment

- Airbag for driver and front passenger
- Airbag: Center airbag
- Airbag: Windowbag for driver and front passenger
- Basic services
- Brake assist, active
- Diesel particulate filter
- DYNAMIC SELECT
- ECO start/stop function
- Chassis: AGILITY CONTROL chassis with selective damping system and lowered suspension
- Velour floor mats
- Transmission: 9-speed automatic, 9G-TRONIC
- Rear bumper with diffuser-look insert, black grained
- Interior headliner fabric crystal grey
- KEYLESS-GO start function
- THERMATIC automatic climate control with 1 climate zone
- Front headrests
- Cargo area cover including EASY-PACK safety net
- Steering wheel: Multifunction sports steering wheel in leather
- Package: Storage
- Upholstery: Fabric Tandel
- Radio: MBUX
- Radio accessories: Communication module (LTE) for using Mercedes me connect services
- Remote Services Plus
- Windscreen wipers with rain sensor
- Seats: Rear seat backrests foldable
- Lane Keeping Assist, active
- High-visibility vest for drivers
- Central locking with remote control
- Airbag: Automatic passenger airbag deactivation
- Airbag: Side airbag for driver and front passenger
- Left and right exterior mirrors are heated and electrically adjustable
- black roof rails
- Double cup holder at the front
- EASY-PACK tailgate
- Electronic Stability Program (ESP)
- Electric windows (4-way)
- Front bumper painted in body color
- Speed Limit Assistant
- rear window wiper
- Heated rear window
- ISOFIX child seat attachment with top tether in the rear
- Mechanical child safety lock for the rear doors
- Rear headrests (3)
- Paint finish: Solid
- LED High Performance Headlights
- Mercedes-Benz emergency call system
- Center console in high-gloss black
- Package: Interior lighting package
- Radio: Extended MBUX functions
- Radio accessories: Digital radio (DAB)
- Radio accessories: Central display
- Tire pressure monitoring system (TPMS)
- Wheels: 43.2 cm (17") multi-spoke alloy wheels
- Power steering
- Seats: Front seats mechanically adjustable
- Cruise control
- Electronic immobilizer
- Decorative elements, base foil, instrument panel



Extra equipment

- Fuel tank with larger capacity
- Heat-insulating dark tinted glass
- Package: Comfort Package (heated seats for driver and front passenger - 4-way lumbar support)
- Package: Driving Assistance (Active Distance Assist DISTRONIC, Active Speed Limit Assist, Extended Automatic Restart on Highways, Route-Based Speed Adaptation with Traffic Jam End Function, Active Traffic Jam Assist, Active Steering Assist, Active Lane Change Assist, Active Emergency Stop Assist, Emergency Lane Function, Active Brake Assist with Vehicle, Bicycle and Pedestrian Detection; Intersection Function, Turn Function, Traffic Jam End Emergency Braking Function, Evasive Steering Assist, Active Lane Keeping Assist, Active Blind Spot Assist, Exit Warning Function)
- Package: Parking (12 ultrasonic sensors - reversing camera - Active Parking Assist with PARKTRONIC: detects free parking spaces, assisted parking, visual and acoustic warning, display of camera and ultrasonic data in the media display - Cross traffic warning: can provide visual and acoustic warnings when reversing out of a parking space and, if necessary, automatically initiate emergency braking - Reverse maneuvering brake: can trigger a braking process - Drive-away assist)
- Paint finish: Metallic
- Type designation removed from trunk lid
- Package: Infotainment package (MBUX Navigation Premium (hard drive navigation, pre-installation for Live Traffic Information), traffic sign assistant, smartphone integration (connects the mobile phone wirelessly to the multimedia system via Apple CarPlay and Android Auto), wireless charging system for mobile devices in the front)
- Package: Luggage compartment comfort (electrically folding rear seat backrests via switches on the right and left in the control panel in the load compartment - electric opening and closing of the load compartment roller blind - 12V socket on the left in the control panel in the load compartment - reversible mat, with a rubberized, non-slip side and a soft velour side)
- Package: Mirror package (both exterior mirrors electrically folding (button in the driver's door control panel) - interior mirror and exterior mirror on the driver's side automatically dimming continuously - ambient lighting of the exterior mirror to illuminate the entry area with projection of the Mercedes-Benz logo)
- Telephone accessories: Wireless charging system for mobile devices (wireless charging according to Qi standard for compatible mobile phones - fast connection setup between multimedia system and mobile phone via Near Field Communication (NFC) for identification of the mobile device - storage compartment for wireless charging is located in the storage compartment at the front of the center console)

Brief expert findings

Documents submitted	At the time of the inspection, the vehicle registration certificate Part 2 (title) was available, but the vehicle registration certificate Part 1 (document) was not. (Copy)
VIN comparison	The vehicle identification number (VIN) was read from the vehicle and its conformity with the submitted documents was confirmed by the undersigned during the inspection.
Inspection	The inspection conditions were sufficient for the assessment of the vehicle. Lifting equipment and/or a pit were available for examining the vehicle.
Test drive	A short maneuvering and shunting exercise was carried out on the company premises.
Engine function test	An engine test run was performed.

Value reducing factors

No.	Component group	Description
1	Vehicle glazing	Rear window - Scratch(es) - Loss in value
2	Door - rear left side	Door (+ Steinschlag Gebrauchspur) - Scratch(es) - Smart repair
3	2nd wheel set	1 alloy rim - Scratched - Loss in value
4	Bonnet	Bonnet - Stone chips - Paint
5	Front bumper	Front bumper - Scratched - Repair and paint



Wear and tear

No.	Component group	Description
1	Wheel / tyres	Tyre - front (3mm Profiltiefe) - Does not meet the leasing specifications - No deduction
2	Wheel / tyres	Alloy rim - front right side - Scratched - No deduction
3	Wheel / tyres	Alloy rim - rear right side - Scratch(es) - No deduction
4	Vehicle glazing	Windscreen - Stone chips - No deduction
5	Door - front right side	Door - Scratch(es) - No deduction

The vehicle shows signs of wear and tear commensurate with its age and use.

Missing parts

Description

Interior - Boot cover / roller cover

Order/Scope of Order

An order was placed to prepare a sales report for the described vehicle. This report includes the following:

- Description of key vehicle information
- Documentation of equipment features
(*Delivery by third-party service providers*)
- Documentation of damage, defects, missing parts
- Documentation of prior damage, unrepaired prior damage, repainting
- A brief visual or functional inspection of the equipment details, if possible.
(*Functional testing of driver assistance systems is not included in the scope of services!*)
- a photographic documentation of the vehicle

Basis for the order

This product is based on the guidelines for vehicle returns and valuations published by Alphabet Fleet GmbH. The expert makes the specific findings in each individual case objectively, within the framework of the prescribed standards, based on their own expertise.

The vehicle inspection takes place in a fully assembled, unassembled state.

Damage or defects that can only be detected during disassembly/diagnostic work or through further investigation remain within the realm of prognostic risk. An increased risk exists due to concealed defects caused by fraudulent misrepresentation and which were not identifiable by the expert.

Damage or defects resulting from normal use or wear and tear of the vehicle will be accepted in accordance with the applicable standard.

There was no explicit identification or monetary consideration of the expected features within the product.

Features which, in their nature and extent, slightly exceed normal use but do not constitute unacceptable damage, will be documented and indicated as signs of wear, if applicable.

Damage or defects that, according to the applicable standard, can no longer be attributed to normal use or wear and tear are listed under "Value Reducing Factors" in the product description.

Depending on the product specification, a monetary ID can be provided. If this takes place, the costs can be 100% d or pro rata depending on the vehicle's age and mileage.

Comments

- Winterradsatz ist kein Bestandteil des Auslieferungsumfangs.



Figure 1: Diagonal front (left)



Figure 2: Diagonal front (right)



Figure 3: Diagonal rear (left)



Figure 4: Diagonal rear (right)



Figure 5: Interior - front



Figure 6: Interior - rear



Figure 7: Instrument cluster



Figure 8: Instrument panel



Figure 9: Interior 360° view



Figure 10: Cargo area

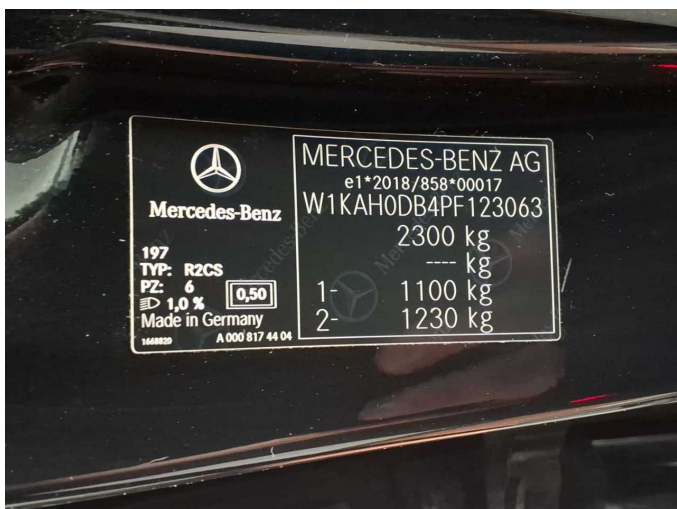


Figure 11: VIN



Figure 12: Mounted tyres



Figure 13: Documents

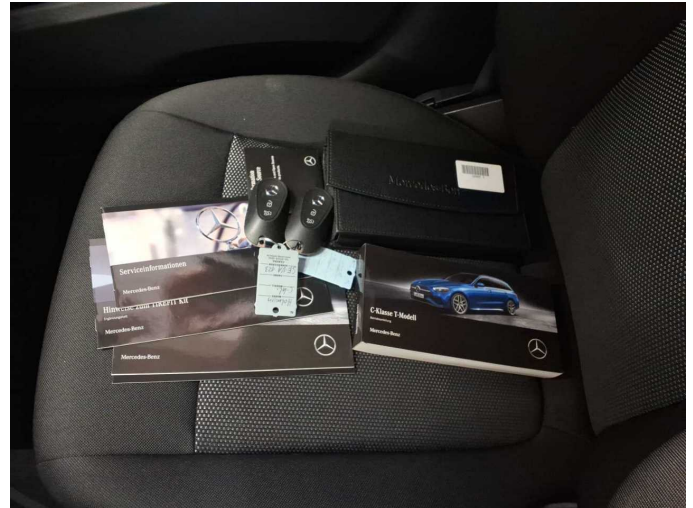


Figure 14: Documents



Figure 15: Additional tyres

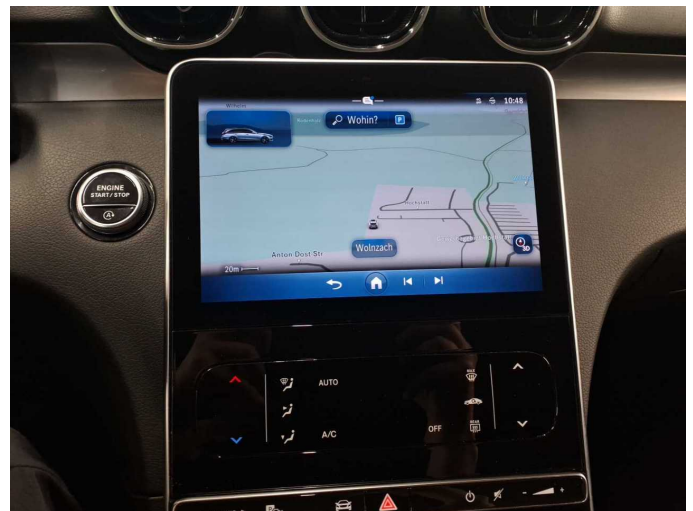


Figure 16: Navigation



Figure 17: Misc.



Figure 18: Misc.



Figure 19: Misc.

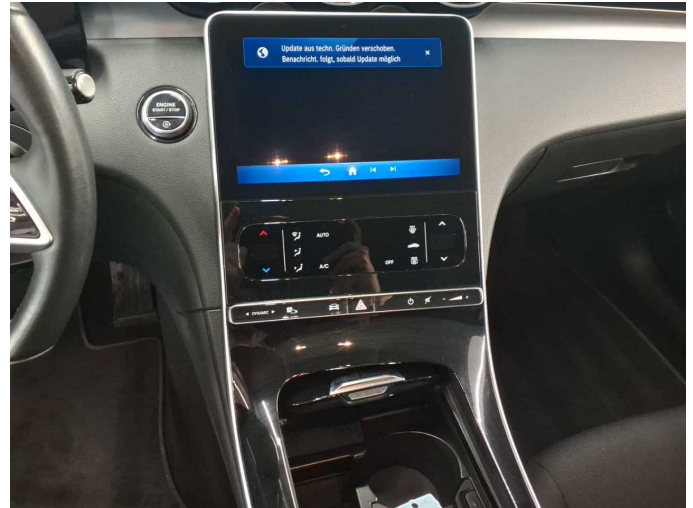


Figure 20: Misc.



Figure 21: Misc.



Figure 22: Misc.



Figure 23: Misc.



Figure 24: Misc.



Figure 25: Misc.



Figure 26: Misc.



Figure 27: Misc.



Figure 28: Misc.



Figure 29: Misc.



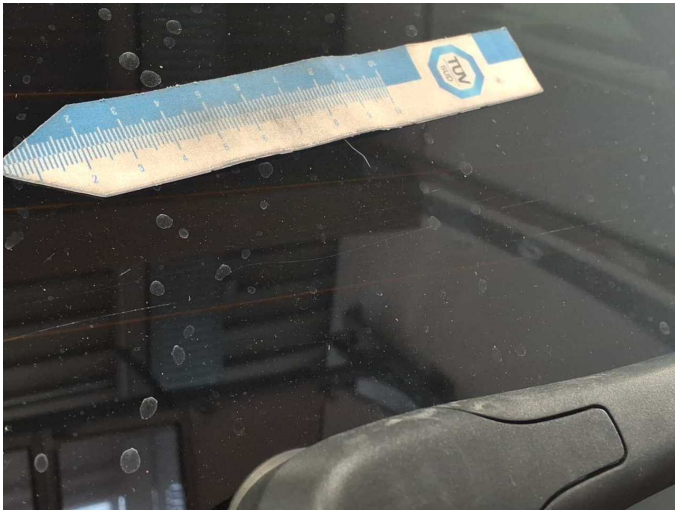
Figure 30: Misc.



Damage 1: Vehicle glazing: Rear window - Scratch(es) - Loss in value



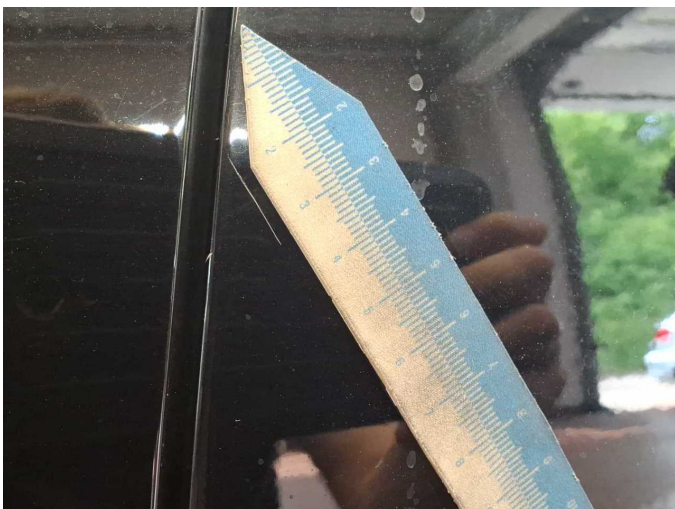
Damage 1: Vehicle glazing: Rear window - Scratch(es) - Loss in value



Damage 1: Vehicle glazing: Rear window - Scratch(es) - Loss in value



Damage 2: Door - rear left side: Door (+ Steinschlag Gebrauchspur) - Scratch(es) - Smart repair



Damage 2: Door - rear left side: Door (+ Steinschlag Gebrauchspur) - Scratch(es) - Smart repair



Damage 3: 2nd wheel set: 1 alloy rim - Scratched - Loss in value



Damage 3: 2nd wheel set: 1 alloy rim - Scratched - Loss in value



Damage 3: 2nd wheel set: 1 alloy rim - Scratched - Loss in value



Damage 3: 2nd wheel set: 1 alloy rim - Scratched - Loss in value



Damage 4: Bonnet: Bonnet - Stone chips - Paint



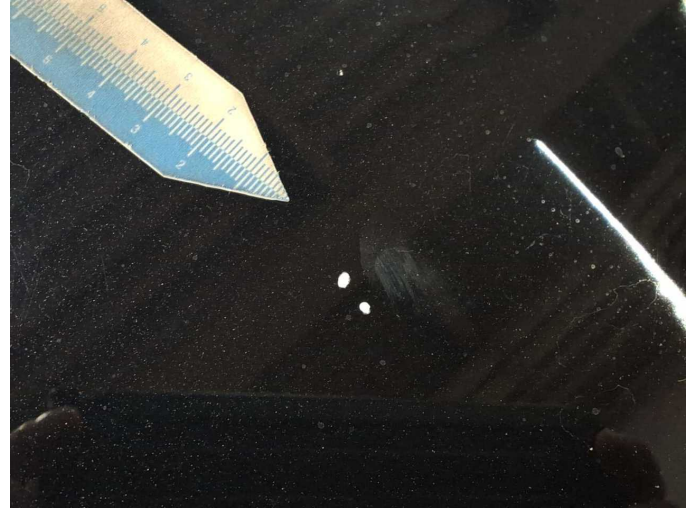
Damage 4: Bonnet: Bonnet - Stone chips - Paint



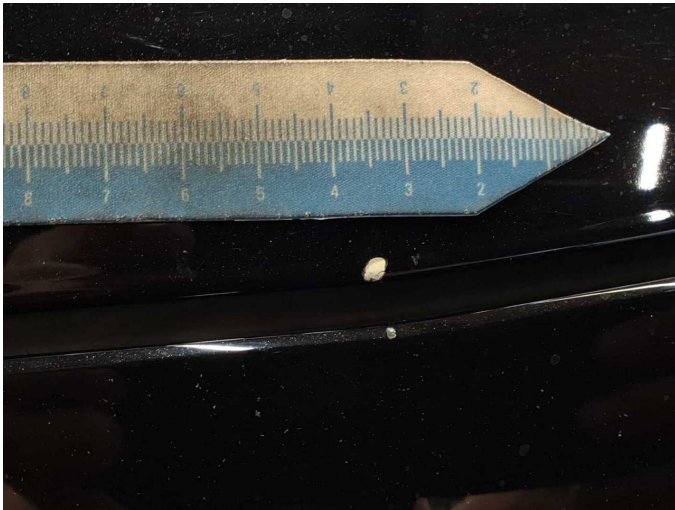
Damage 4: Bonnet: Bonnet - Stone chips - Paint



Damage 4: Bonnet: Bonnet - Stone chips - Paint



Damage 4: Bonnet: Bonnet - Stone chips - Paint



Damage 4: Bonnet: Bonnet - Stone chips - Paint



Damage 4: Bonnet: Bonnet - Stone chips - Paint



Damage 5: Front bumper: Front bumper - Scratched - Repair and paint



Damage 5: Front bumper: Front bumper - Scratched - Repair and paint



Damage 5: Front bumper: Front bumper - Scratched - Repair and paint



Wear and tear 5: Door - front right side: Door - Scratch(es) - No deduction



Wear and tear 5: Door - front right side: Door - Scratch(es) - No deduction



Wear and tear 5: Door - front right side: Door - Scratch(es) - No deduction



Wartungshistorie

(gemäß Auftraggeber Informationen)

Fahrgestellnummer: W1KAH0DB4PF123063

Hersteller / Modell: MERCEDES-BENZ MERCEDES-BENZ C 200 d T 9G-TRONIC

Datum	KM-Stand	Beschreibung
05.08.2025	99.571	Bremsscheiben hinten; Regelwartungsdienst
05.03.2025	75.594	Regelwartungsdienst
23.09.2024	50.147	Regelwartungsdienst
27.02.2024	24.032	Motoröl b. Wartung; Ölfilter ern; Regelwartungsdienst; Wartung Sonstiges