

Expertise

Protocol number: 46318788
Order No. / Reference: 26349719
Inspection date: 3 Jul 2026

Manufacturer: Ford

Model: S-Max 2.0 EcoBlue Aut. Titanium

VIN: WF0JXXWPCJNM10461



Vehicle details

Manufacturer / Type / Model / Equipment

Ford S-Max 2.0 EcoBlue Aut. Titanium

Vehicle Identification number WF0JXXWPCJNM10461

Mileage (Read) 94,572 km

First registration 24 Oct 2022

Number of holders 1

Next periodical technical inspection 10/2027
(Report not on hand)

Power / Engine displacement 140 kw / 1,995 ccm

Fuel type / Cylinder Diesel / 4

Gearbox / Number of gears Automatic / 8

Type of drive Front drive

Type of vehicle Van

Colour / colour code Lucid-Rot Metallic

Doors / Seats 5 / 5

Upholstery type Cloth

Colour of upholstery Anthracite-Black



Vehicle details

Maintenance booklet / proof	digital proof / complete	Next maintenance in	
Last service on / at	01/2026 at 84,264 km		
Key is / should be	2 / 2	FZG documents	ZB#2 (B) was available (copy), ZB#1 (S) was not available.
		Letter No.	GP440522
Previous damage / Accident	Detectable	Repainting	None detectable
Inspection conditions	sufficient	Lifting equipment / pit	yes
Test drive	Not performed	Engine function test	Performed
Manufacturer key number/ type code number	8566 / BQR 00353		
Emission standard	EURO6;WLTP;AP;PI/CI; M, N1 I	fine dust sticker	
Permitted total weight	2,555 kg	Empty weight	

Tyres

Mounted tyres

#	Tyre size	Type of tyre	Manufacturer	Tread depth
1)	235/55 R17 103V	Summer tyres on Light alloy	Continental	4mm / 4mm
2)	235/55 R17 103V	Summer tyres on Light alloy	Continental	4mm / 4mm

Additional tyres

#	Tyre size	Type of tyre	Manufacturer	Tread depth
1)	235/55 R17 103V	Winter tyres on Light alloy	Dunlop	5mm / 5mm
2)	235/55 R17 103V	Winter tyres on Light alloy	Dunlop	5mm / 5mm

Replacement

Typ	Tyre size	Type of tyre	Manufacturer	Tread depth
	Tirefit	Expiration date 08/2026		

Legend: Tread depth information for the left tire is listed first, for the right tire it is listed second on the axle in the direction of travel.



Equipment

Standard equipment

- Storage compartments
- Anti-lock braking system (ABS)
- Tires: 7.5 J x 17 alloy wheels (4) with 235/55 R 17 tires
- Hill start assist
- Diesel particulate filter (DPF)
- Tachometer
- Driver information system display 25.4 cm color
- Electric windows front and rear
- Electronic parking brake
- Ford Power start function with Ford Key Free system
- Luggage compartment lighting
- Transmission: 8-speed automatic transmission
- rear window wiper
- Intelligent security system
- Electric child safety lock
- Radiator grille
- Steering wheel: Steering column, adjustable in height and reach
- Steering wheel: Paddle shifters on the steering wheel
- Front center console with padded armrest
- Fog light
- Package: Winter
- Upholstery: Cloth
- Tire repair kit
- Tire Pressure Monitoring System (TPMS)
- Headlight dipped beam with switch-off delay including "greeting function"
- Seats: Driver and passenger seats, 4-way manually adjustable
- Seats: Front seats can be heated individually and variably.
- Storage compartment under driver and passenger seats
- LED daytime running lights
- Warning system for unfastened seat belts for the 1st and 2nd rows of seats

Extra equipment

- Paint finish: Metallic
- Safety partition net behind the 2nd row of seats
- Sunshades in the rear side doors (manual)

- Ambient lighting at the front
- Exterior mirrors in body color, driver and passenger side, electrically adjustable and heated
- third brake light
- Dual exhaust system
- Front door sill trim in chrome finish
- Lane keeping assist including lane keeping assist and driver fatigue warning
- Ford Power Start function
- luggage compartment cover
- Cruise control system with intelligent speed limiter
- Back window, heater
- Interior lighting with delay circuit
- Isofix bracket
- Air conditioning with automatic temperature control
- Radiator grille with chrome trim
- Steering wheel: Multifunction leather steering wheel and leather gear knob
- Reading lights front and rear
- MyKey key system (individually programmable second key)
- Emergency brake light
- Front and rear parking pilot system
- Radio equipment: CD audio system including Ford SYNC 3 with AppLink, touchscreen and Ford navigation system
- Windscreen wipers with rain sensor
- Headlight assistant with day/night sensor
- Electromechanical power steering
- Seats: Flexible seating system "FoldFlatSystem (FFS)"
- Seats: Front sports seats
- Start-stop system
- Power outlet: 12-volt connection at the front
- Premium carpet floor mats
- Immobiliser
- Central locking with remote control

- Side windows from the 2nd row of seats and rear window, dark tinted.



Brief expert findings

Documents submitted	At the time of the inspection, the vehicle registration certificate Part 2 (title) was available, but the vehicle registration certificate Part 1 (document) was not. (Copy)
VIN comparison	The vehicle identification number (VIN) was read from the vehicle and its conformity with the submitted documents was confirmed by the undersigned during the inspection.
Inspection	The inspection conditions were sufficient for the assessment of the vehicle. Lifting equipment and/or a pit were available for examining the vehicle.
Test drive	No test drive/shunting maneuver was carried out during the inspection of the vehicle.
Engine function test	An engine test run was performed.

Value reducing factors

No.	Component group	Description
1	Trim / covers	Floor mats - Damaged - Replace
2	Door - front left side	Door - Scratch(es) - Paint
3	Front bumper	Front bumper - Deformed - Paint
4	Boot lid / rear door	Boot lid - Scratch(es) - Paint

Wear and tear

No.	Component group	Description
1	Bonnet	Bonnet - Stone chips - No deduction
2	Vehicle glazing	Windscreen - Stone chips - No deduction
3	Interior	Interior - Scratch(es) - No deduction

The vehicle shows signs of wear and tear commensurate with its age and use.

Previous damages

No.	Previous damage	Extent of damage (Net)
1	Rear, Provided by user / customer, from 1 Mar 2024	2.891,71 €

Order/Scope of Order

An order was placed to prepare a sales report for the described vehicle. This report includes the following:

- Description of key vehicle information
- Documentation of equipment features
(*Delivery by third-party service providers*)
- Documentation of damage, defects, missing parts
- Documentation of prior damage, unrepaired prior damage, repainting
- A brief visual or functional inspection of the equipment details, if possible.
(*Functional testing of driver assistance systems is not included in the scope of services!*)
- a photographic documentation of the vehicle



Basis for the order

This product is based on the guidelines for vehicle returns and valuations published by Alphabet Fleet GmbH. The expert makes the specific findings in each individual case objectively, within the framework of the prescribed standards, based on their own expertise.

The vehicle inspection takes place in a fully assembled, unassembled state.

Damage or defects that can only be detected during disassembly/diagnostic work or through further investigation remain within the realm of prognostic risk. An increased risk exists due to concealed defects caused by fraudulent misrepresentation and which were not identifiable by the expert.

Damage or defects resulting from normal use or wear and tear of the vehicle will be accepted in accordance with the applicable standard.

There was no explicit identification or monetary consideration of the expected features within the product.

Features which, in their nature and extent, slightly exceed normal use but do not constitute unacceptable damage, will be documented and indicated as signs of wear, if applicable.

Damage or defects that, according to the applicable standard, can no longer be attributed to normal use or wear and tear are listed under "Value Reducing Factors" in the product description.

Depending on the product specification, a monetary ID can be provided. If this takes place, the costs can be 100% d or pro rata depending on the vehicle's age and mileage.

Previous damages

According to available information previous damages were repaired at the vehicle. Traces of repairs, which allow conclusions about the area of repair, were not recognizable during the inspection.

Comments

Wartungshistorie gemäß Auftraggeber Informationen.

- Winterradsatz ist kein Bestandteil des Auslieferungsumfangs.



Figure 1: Diagonal front (left)



Figure 2: Diagonal front (right)



Figure 3: Diagonal rear (left)



Figure 4: Diagonal rear (right)

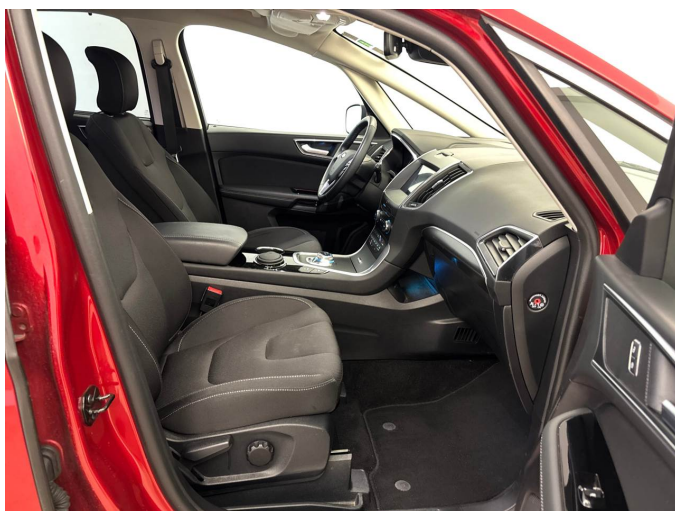


Figure 5: Interior - front

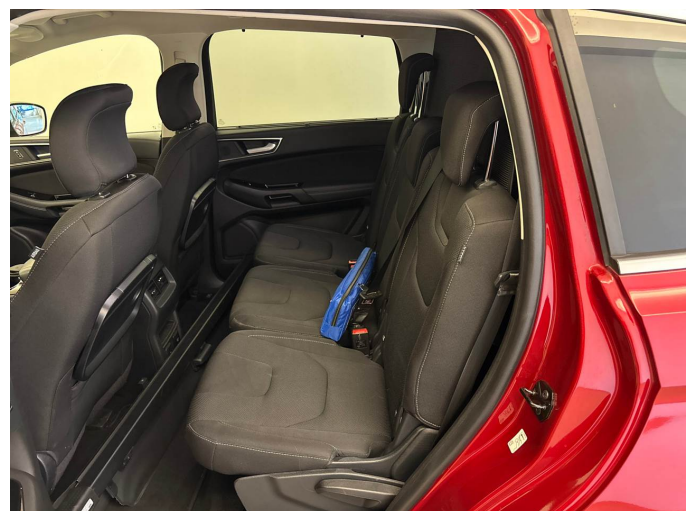


Figure 6: Interior - rear



Figure 7: Instrument cluster



Figure 8: Instrument panel



Figure 9: Interior 360° view



Figure 10: Cargo area



Figure 11: VIN



Figure 12: Mounted tyres



Figure 13: Documents



Figure 14: Additional tyres



Figure 15: Navigation



Figure 16: Misc.

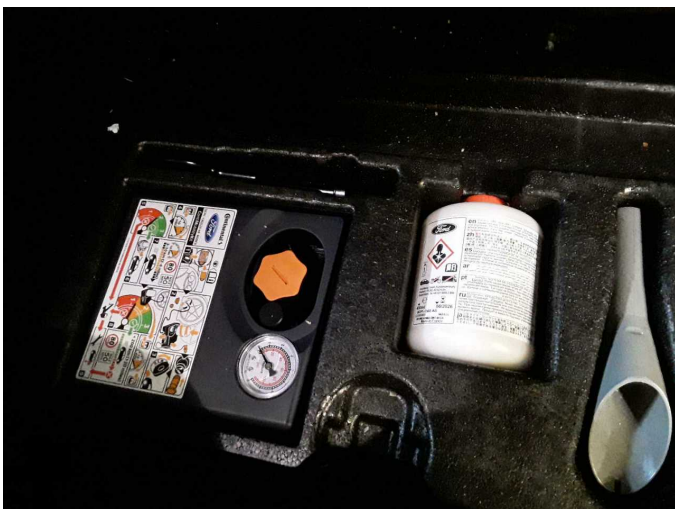


Figure 17: Misc.

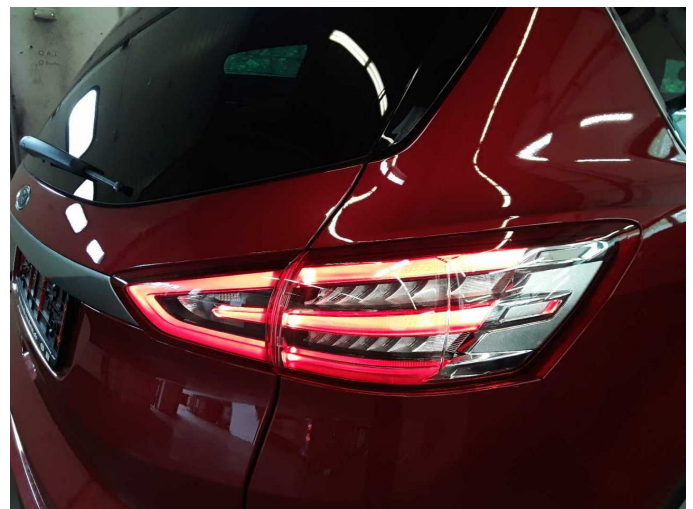


Figure 18: Misc.



Figure 19: Misc.



Figure 20: Misc.



Figure 21: Misc.



Figure 22: Misc.



Figure 23: Misc.



Figure 24: Misc.



Figure 25: Misc.



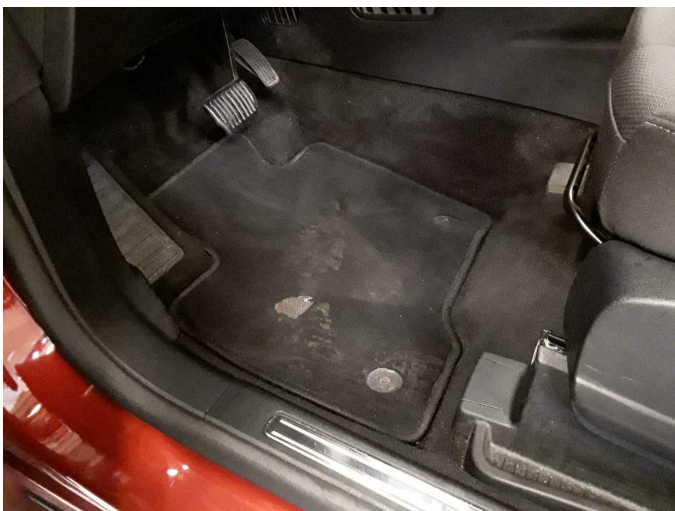
Figure 26: Misc.



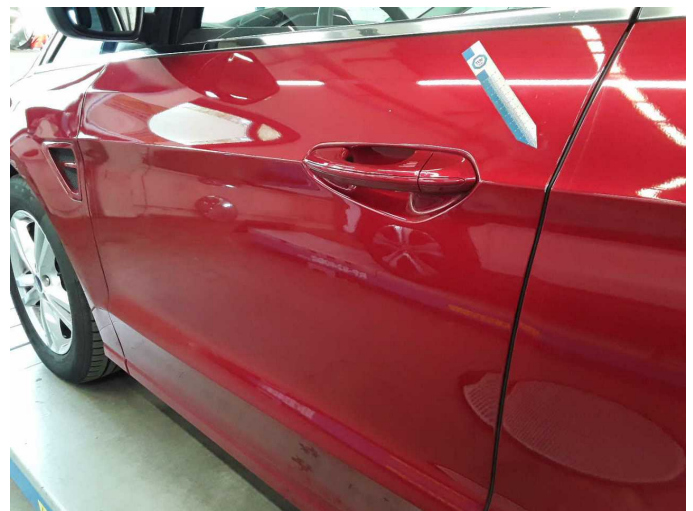
Figure 27: Misc.



Damage 1: Trim / covers: Floor mats - Damaged - Replace



Damage 1: Trim / covers: Floor mats - Damaged - Replace



Damage 2: Door - front left side: Door - Scratch(es) - Paint



Damage 2: Door - front left side: Door - Scratch(es) - Paint



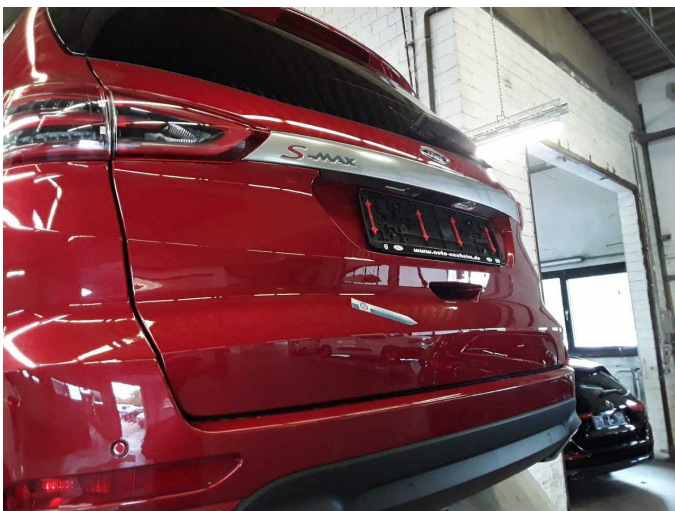
Damage 2: Door - front left side: Door - Scratch(es) - Paint



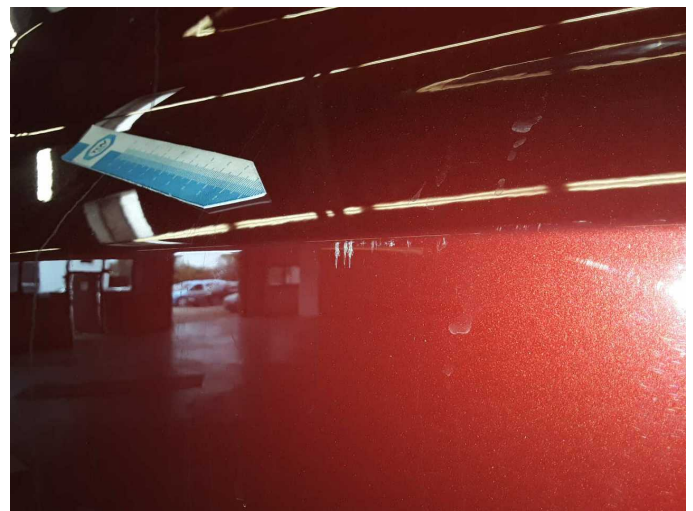
Damage 3: Front bumper: Front bumper - Deformed - Paint



Damage 3: Front bumper: Front bumper - Deformed - Paint



Damage 4: Boot lid / rear door: Boot lid - Scratch(es) - Paint



Damage 4: Boot lid / rear door: Boot lid - Scratch(es) - Paint



Wartungshistorie

(gemäß Auftraggeber Informationen)

Fahrgestellnummer: WF0JXXWPCJNM10461
Hersteller / Modell: FORD FORD S-Max 2.0 EcoBlue Aut. TITANIUM

Datum	KM-Stand	Beschreibung
20.01.2026	84.264	Bremse Sonstiges; Bremsklötze hinten; Bremsscheiben + Klötze h; Bremsscheiben hinten; Motoröl b. Wartung; Ölfilter ern; Regelwartungsdienst; Wartung Sonstiges
21.10.2025	77.403	HU + AU
20.01.2025	57.066	Bremse Sonstiges; Bremsflüssigkeit; Bremsflüssigkeit ern; Bremsklötze vorne; Bremsscheiben + Klötze v; Bremsscheiben vorne; Kraftstofffilter ern; Luftfiltereinsatz ern; Motoröl b. Wartung; Ölfilter ern; Regelwartungsdienst; Wartung Sonstiges
15.02.2024	30.627	Motoröl b. Wartung; Ölfilter ern; Regelwartungsdienst; Wartung Sonstiges