

Expertise

Protocol number: 45529429
Order No. / Reference: 26337667
Inspection date: 19 May 2026

Manufacturer: Mercedes-Benz

Model: GLE 300 d 4Matic 9G-TRONIC

VIN: W1N1671091A639318



Vehicle details

Manufacturer / Type / Model / Equipment

Mercedes-Benz GLE 300 d 4Matic 9G-TRONIC

Vehicle Identification number	W1N1671091A639318
Mileage (Read)	66,434 km
First registration	3 Mar 2022
Number of holders	1
Next periodical technical inspection (Report on hand)	03/2027

Power / Engine displacement	200 kw / 1,993 ccm
------------------------------------	--------------------

Fuel type / Cylinder	Hybrid Diesel / E / 4
-----------------------------	-----------------------

Gearbox / Number of gears	Automatic / 9
----------------------------------	---------------

Type of drive	All-wheel drive
----------------------	-----------------

Type of vehicle	SUV
------------------------	-----

Colour / colour code	POLARWEISS - UNILACK
-----------------------------	----------------------

Doors / Seats	5 / 5
----------------------	-------

Upholstery type	Artificial leather
------------------------	--------------------

Colour of upholstery	Black
-----------------------------	-------

Vehicle with smoke odor	no
--------------------------------	----



Vehicle details

Maintenance booklet / proof	digital proof / complete	Next maintenance in	32 Tag(e)
Last service on / at	06/2025 at 48,645 km		
Key is / should be	2 / 2	FZG documents	ZB#2 (B) was available (copy), ZB#1 (S) was not available.
		Letter No.	GF786244
Previous damage / Accident	Detectable	Repainting	Detectable
Inspection conditions	sufficient	Lifting equipment / pit	No
Test drive	Not performed	Engine function test	Performed
Manufacturer key number/ type code number	2222 / AXT 00005		
Emission standard	EURO6;WLTP;AP;PI/CI; M, N1 I	fine dust sticker	
Permitted total weight	3,000 kg	Empty weight	

Tyres

Mounted tyres

#	Tyre size	Type of tyre	Manufacturer	Tread depth
1)	275/50 R20 113W	Summer tyres on Light alloy	Pirelli	6mm / 6mm
2)	275/50 R20 113W	Summer tyres on Light alloy	Pirelli	5mm / 5mm

Additional tyres

#	Tyre size	Type of tyre	Manufacturer	Tread depth
1)	275/50 R20 113V	Winter tyres on Light alloy	Continental	5mm / 5mm
2)	275/50 R20 113V	Winter tyres on Light alloy	Continental	5mm / 5mm

Legend: Tread depth information for the left tire is listed first, for the right tire it is listed second on the axle in the direction of travel.

TÜV SÜD Auto Partner GmbH
Gutenbergstraße 13
70771 Leinfelden-Echterdingen

Inspection location
Mosolf SE & Co.KG
Faberweg 25
73230 Kirchheim unter Teck



Equipment



Standard equipment

- Exhaust system with 2 chrome-plated tailpipe trims
- Adaptive Highbeam Assist
- Adaptive brake light (flashing)
- Airbag: Kneebag for driver
- Airbag: Windowbags
- Active Brake Assist
- 4MATIC permanent all-wheel drive
- Anti-lock braking system
- Traction control (ASR)
- Foldable armrest for driver and front passenger (with storage compartment)
- Rear armrest (foldable)
- ATTENTION ASSIST (can detect typical signs of fatigue through driver behavior and warn the driver of increasing fatigue or inattentiveness)
- Electrically adjustable and heated exterior mirrors
- Roof rails in aluminum look
- Diesel particulate filter
- Tachometer
- Third brake light
- EASY-Pack tailgate with electric operation for opening and closing
- ECO start/stop function
- Electronic Stability Program (ESP)
- Electronic traction system for all-wheel drive (4ETS)
- Electric windows, front and rear
- electric parking brake
- Speed Limit Assistant (camera behind the windshield - uses image recognition to determine the maximum permissible speed of the currently driven route based on the corresponding signage - if there are no signs, additional information such as the lane width can be used to determine the maximum permissible speed - display of speed limits including restrictive additional signs in the instrument cluster and in the optionally available display)
- Interior headliner fabric crystal grey
- Mechanical child safety locks in the rear doors (and electric locks for the rear window regulators)
- Communication module (LTE) for using Mercedes me connect services (The communication module (LTE) offers you a clear increase in comfort and safety. It constantly connects the vehicle to the internet – so that you can use helpful services such as the Live Traffic Information from Mercedes me connect. Two mobile antennas and an LTE-enabled SIM card ensure a fast connection.)
- Headrests adjustable in 5 positions (height and tilt)
- Radiator grille with 2 chrome-plated louvers in SUV design
- Steering wheel: Multifunction sports steering wheel in Nappa leather (The multifunction sports steering wheel in Nappa leather with black control panels will delight you with every glance and every touch. The soft Nappa leather is of exquisite quality. The steering wheel thus conveys a passion for high-quality automotive details at all times.)
- ADAPTIVE BRAKE (with HOLD function - including hill start assist and drying brakes in wet conditions)
- Airbag: Driver and passenger side
- Airbag: Sidebag for driver and front passenger (combined thorax/pelvisbag)
- Active Lane Keeping Assist
- Ambient lighting (ambient lighting in 64 colors - all colors can be selected individually - brightness of the lighting zones can be selected from 0 to 100% frei - nine color schemes with different color combinations - Dynamic mode: atmospheric color change through slow, continuous transition between different colors - Climate effect: color feedback when the temperature setting is changed - Welcome effect: special lighting when entering the vehicle)
- Automatic passenger airbag deactivation
- Brake Assist BAS (with brake force support during detected emergency braking)
- Downhill Speed Regulation (DSR) (Speed setting between 2 and 18 km/h via the cruise control - switch for turning it on and off in the center console - display in the multimedia display)
- EASY-Pack cargo cover (removable)
- Front door sills with "Mercedes-Benz" lettering illuminated in white
- Chassis with steel springs and lowered suspension (steel springs with passive damping system)
- Velour floor mats (in interior color)
- Transmission: 9G-TRONIC (9-speed automatic transmission - DIRECT SELECT selector lever - DIRECT SELECT steering wheel shift paddles - DYNAMIC Select)
- Lockable, air-conditioned and illuminated glove compartment
- Heated rear window (with timer)
- Rear window wiper with intermittent function (and automatic activation when reversing)
- KEYLESS-GO start function
- Climate: THERMATIC automatic climate control (2-zone automatic climate control: allows individually adjustable temperature for driver and front passenger - climate settings controlled via the instrument panel controls or the touchscreen - sensor system for detecting, for example, interior/exterior temperature, sunlight, humidity and dew point - combination activated carbon filter for filtering dust, soot and pollen - windshield fogging sensor - recirculation mode activated by pressing the button for 2 seconds (with sunroof closing))
- LED High Performance Headlights (Signal light with trifunctional torch for daytime running light, position light and turn indicator in LED light guide technology with thick-walled optics; high beam in LED reflection technology; low beam in LED projection technology; the elements of the rear lights in LED technology: all light functions in full LED technology; tail light; brake light and parking light; rear fog light (only on the left side); turn indicator in the white light strip; reversing light in the white light strip)



- Steering column mechanically adjustable lengthwise and heightwise.
- Mercedes-Benz emergency call system
- Navigation accessories: Extended MBUX functions (personalization (profiles) and prediction functions - LINGUATRONIC with natural language understanding - activation via "Hey Mercedes" - Wi-Fi hotspot - internet radio)
- Navigation: Hard drive navigation (Mercedes-Benz look and feel of the navigation system, all map data stored on the hard drive - fast hard drive navigation - destination input via touch function or voice control - route calculation including waypoints - numerous route options and avoidance options - 3D image of the upcoming driving maneuver and lane recommendation - easy switching between 2D and 3D views - compass - route recording function (prerequisite: a USB device is connected to the multimedia system))
- Upholstery: ARTICO black leatherette
- PRE-SAFE system (with reversible belt tensioners for driver and front passenger seats and closing function for side windows)
- Tire pressure monitoring system (TPMS)
- Rear view camera
- Windscreen wipers with rain sensor
- Power steering
- 3-point safety belts (including mechanical belt height adjustment and belt force limiter for driver and front passenger as well as automatic belt height adjustment in the rear outer seats)
- Seats: Comfort seats
- Seats: Rear seat backrests foldable (40/20/40 split ratio)
- Phone accessories: Smartphone integration (Android Auto and Apple CarPlay). Smartphone integration merges the mobile phone with the media system via Apple CarPlay and Android Auto.
- Heat-insulating glass, all around
- Central locking with interior switch (including automatic locking (can be deactivated) and crash sensor with emergency opening)
- Decorative elements: Brushed aluminum with light longitudinal grain
- Navigation accessories: Pre-installation for navigation services (Wherever you go, you're always well-informed. Your vehicle answers your questions about your journey and you can find out current fuel prices at your destination, the number of available parking spaces, or the current weather. This makes trip planning even easier.)
- Package: Chrome (window line trim strip, front and rear underride protection, chrome-plated beltline trim strip)
- Package: Parking package with reversing camera (Active Parking Assist with PARKTRONIC)
- Package: Mirror package (both exterior mirrors electrically folding (button in the driver's door control panel) - automatic lowering of the passenger-side mirror glass to the parking position when reverse gear is engaged - interior mirror and driver's side exterior mirror automatically dimming - ambient lighting in both exterior mirrors: with projection of the brand logo to illuminate the entry area)
- Radio accessories: Digital radio (DAB)
- Radio accessories: Additional USB ports
- Remote Services Plus (The Remote Services Plus package transforms mobility into a new experience, offering greater comfort and safety. Status queries provide information about the remaining range. You can remotely control certain functions and locate your vehicle. Services such as maintenance management coordinate service appointments, saving you valuable time.)
- Seats: 4-way lumbar support for driver and front passenger
- Seats: Heated seats for driver and front passenger seats
- Seats: Front seats electrically adjustable
- Cruise control with variable speed limiter
- High-visibility vest for drivers
- Immobiliser
- Widescreen Cockpit (instrument display and media display as an optical unit under a continuous cover glass - display cluster consisting of two fully digital color displays in flatscreen look with a screen diagonal of 12.3 inches each and a resolution of 1920 x 720 pixels - touchscreen version for the media display - display styles: "Classic", "Sport", "Progressive" and "Discreet")



Extra equipment

- Towbar with ESP trailer stabilization
- Fuel tank with larger volume (85 l)
- Cargo area cover (with additional partition net).
- Upholstery: ARTICO man-made leather
- Heated windshield washer system (including washer fluid reservoir, washer nozzles and washer fluid hoses)
- Sunroof: Panoramic sunroof (large glass module made of heat-insulating, tinted safety glass - mesh wind deflector in the front area - electric sunshade with one-touch operation - comprehensive protection concept: - anti-pinch protection - automatic rain closing - PRE-SAFE closing function (only in conjunction with PRE-SAFE system))
- 230V power outlet in the rear
- Illuminated running boards in aluminum look with rubber studs
- Type designation removed from luggage compartment lid
- Heat-insulating dark tinted glass
- Decorative elements: Open-pore anthracite oak wood
- Brake system with larger brake discs on the front axle
- Paint finish: Special paint finish, solid color
- Steering wheel: Steering wheel heating
- Wheels: 50.8 cm (20") light alloy wheels in 5-spoke design (aerodynamically optimized, painted black and polished with front axle 275/50 R 20 on 8.5 J x 20 ET 55, rear axle 275/50 R 20 on 8.5 J x 20 ET 42)
- Electric sunshades in the rear doors, left and right (See and not be seen: The electrically operated sunshades in the two rear doors protect passengers from prying eyes and, in summer, from intense sunlight. Visibility to the outside remains possible.)
- Blind Spot Assist
- Roof rack for roof-mounted accessories, including storage bag (roof boxes, bicycle or ski carriers - the base carrier can be combined with a wide variety of Mercedes-Benz roof-mounted accessories. It is precisely matched to the body and offers the best possible safety and aerodynamics.)

Brief expert findings

Documents submitted	At the time of the inspection, the vehicle registration certificate Part 2 (title) was available, but the vehicle registration certificate Part 1 (document) was not. (Copy)
VIN comparison	The vehicle identification number (VIN) was read from the vehicle and its conformity with the submitted documents was confirmed by the undersigned during the inspection.
Inspection	The inspection conditions were sufficient for the assessment of the vehicle. No lifting equipment or pit was available for inspecting the vehicle. Therefore, inspection of the vehicle's underside was only possible to a limited extent.
Test drive	No test drive/shunting maneuver was carried out during the inspection of the vehicle.
Engine function test	An engine test run was performed.

Value reducing factors

No.	Component group	Description
1	Door - rear left side	Door - Scratch(es) - Smart repair

Wear and tear

No.	Component group	Description
1	Vehicle glazing	Windscreen - Stone chips - No deduction
2	Boot lid / rear door	Boot lid - dent(s) - No deduction
3	Door - front right side	Door - dent(s) - No deduction

The vehicle shows signs of wear and tear commensurate with its age and use.

Previous damages

No.	Previous damage	Extent of damage (Net)
1	Side right, Provided by user / customer, from 24 Aug 2023	2.056,41 €



Repainting

No. Repainting

1 Side panel - rear right side, Professionally carried out, Invoice of repair done Non-existent

Paint coat thickness measurement

Side panel - rear right side 158 µm |

Order/Scope of Order

An order was placed to prepare a sales report for the described vehicle. This report includes the following:

- Description of key vehicle information
- Documentation of equipment features
(*Delivery by third-party service providers*)
- Documentation of damage, defects, missing parts
- Documentation of prior damage, unrepaired prior damage, repainting
- A brief visual or functional inspection of the equipment details, if possible.
(*Functional testing of driver assistance systems is not included in the scope of services!*)
- a photographic documentation of the vehicle

Basis for the order

This product is based on the guidelines for vehicle returns and valuations published by Alphabet Fleet GmbH. The expert makes the specific findings in each individual case objectively, within the framework of the prescribed standards, based on their own expertise.

The vehicle inspection takes place in a fully assembled, unassembled state.

Damage or defects that can only be detected during disassembly/diagnostic work or through further investigation remain within the realm of prognostic risk. An increased risk exists due to concealed defects caused by fraudulent misrepresentation and which were not identifiable by the expert.

Damage or defects resulting from normal use or wear and tear of the vehicle will be accepted in accordance with the applicable standard.

There was no explicit identification or monetary consideration of the expected features within the product.

Features which, in their nature and extent, slightly exceed normal use but do not constitute unacceptable damage, will be documented and indicated as signs of wear, if applicable.

Damage or defects that, according to the applicable standard, can no longer be attributed to normal use or wear and tear are listed under "Value Reducing Factors" in the product description.

Depending on the product specification, a monetary ID can be provided. If this takes place, the costs can be 100% d or pro rata depending on the vehicle's age and mileage.

Previous damages

According to available information previous damages were repaired at the vehicle. Traces of repairs, which allow conclusions about the area of repair, were not recognizable during the inspection.

Comments

Der beiliegende Winterradsatz ist kein Bestandteil der Ausstattung.



Figure 1: Diagonal front (left)



Figure 2: Diagonal front (right)



Figure 3: Diagonal rear (left)



Figure 4: Diagonal rear (right)



Figure 5: Interior - front

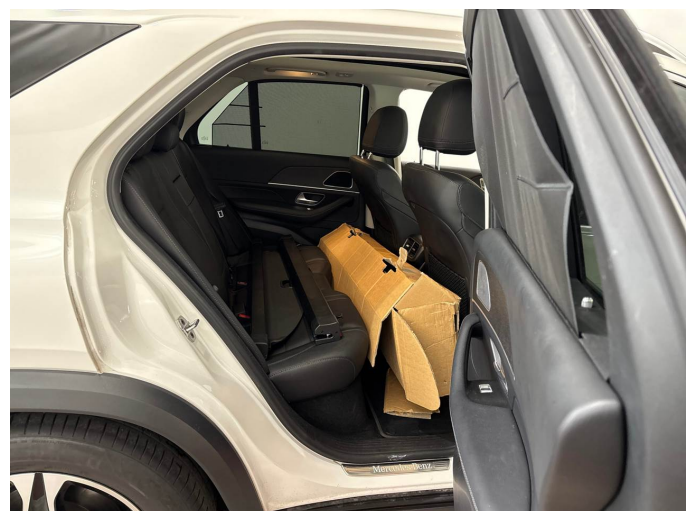


Figure 6: Interior - rear



Figure 7: Instrument cluster



Figure 8: Instrument panel



Figure 9: Interior 360° view



Figure 10: Cargo area



Figure 11: VIN



Figure 12: Mounted tyres



Figure 13: Documents



Figure 14: Documents

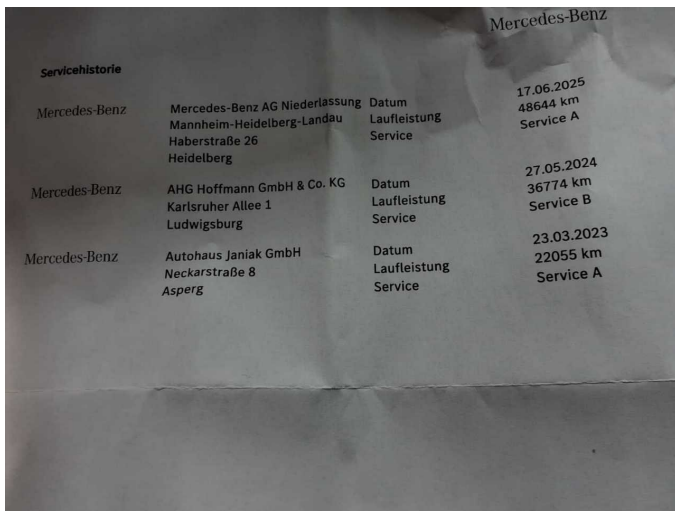


Figure 15: Documents



Figure 16: Documents



Figure 17: Additional tyres

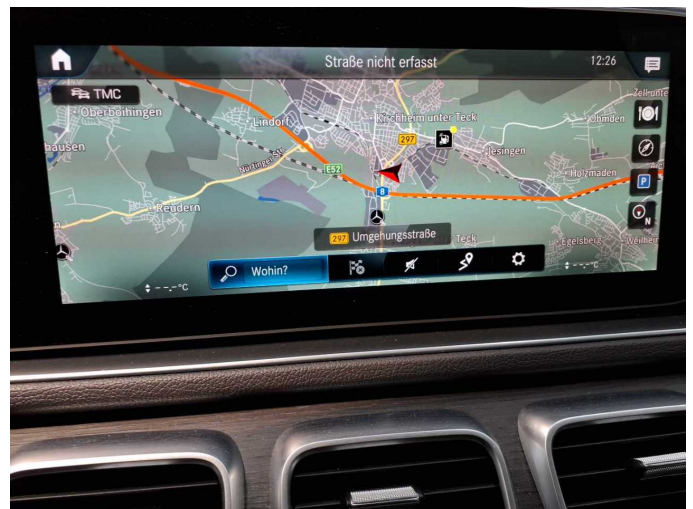


Figure 18: Navigation



Figure 19: Misc.



Figure 20: Misc.

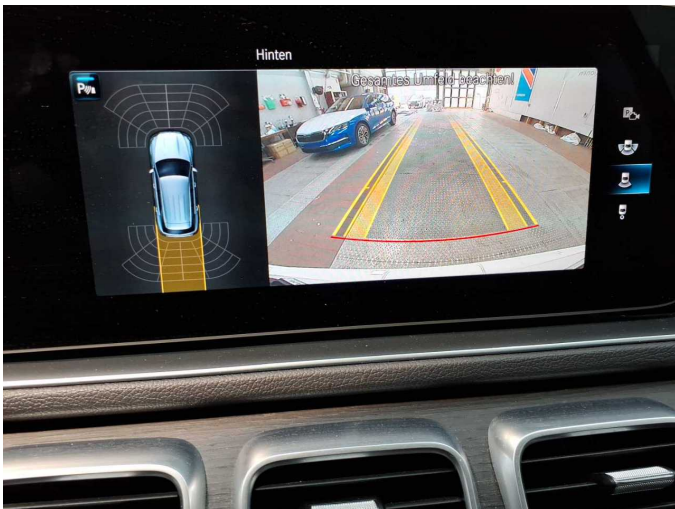


Figure 21: Misc.



Figure 22: Misc.

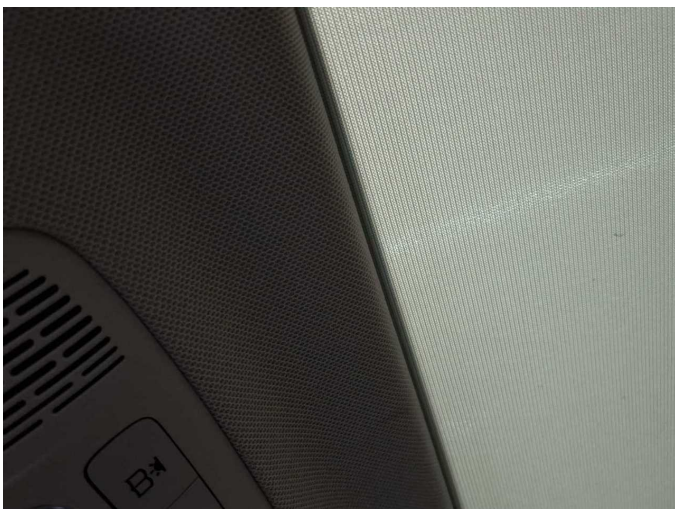


Figure 23: Misc.

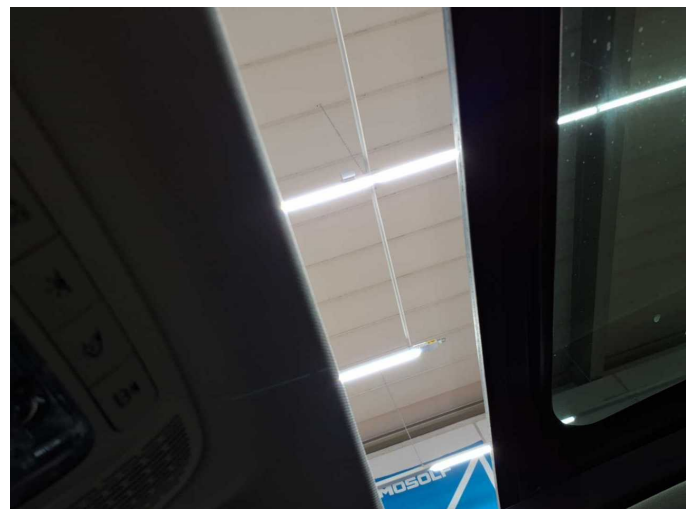


Figure 24: Misc.



Figure 25: Misc.



Figure 26: Misc.



Figure 27: Misc.



Figure 28: Misc.



Figure 29: Misc.

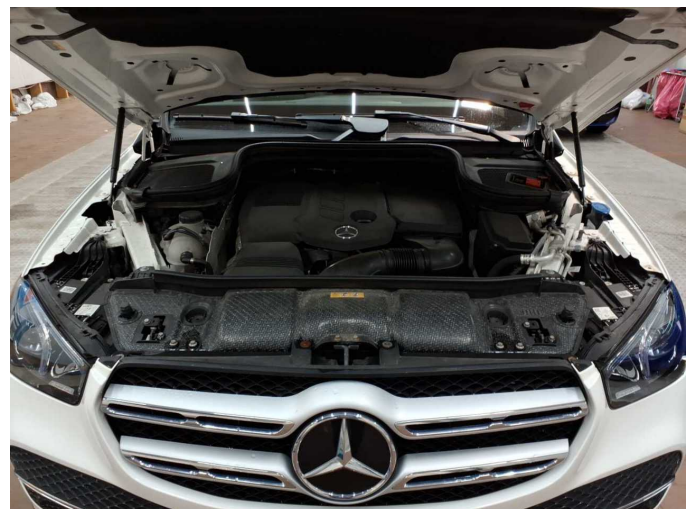


Figure 30: Misc.



Figure 31: Misc.



Figure 32: Misc.

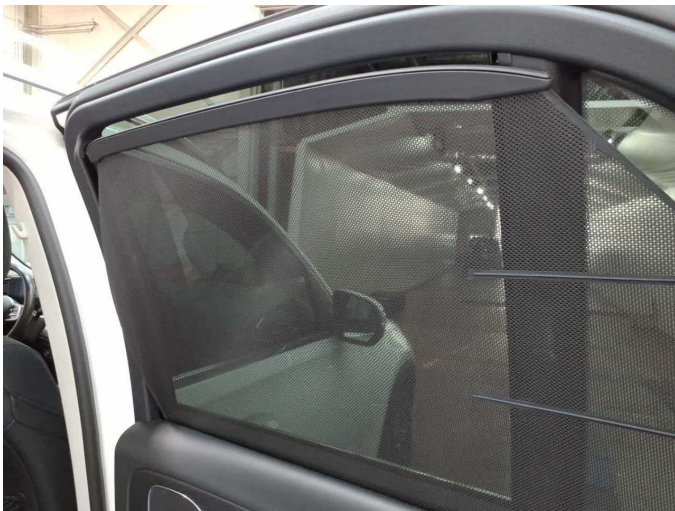


Figure 33: Misc.



Figure 34: Misc.

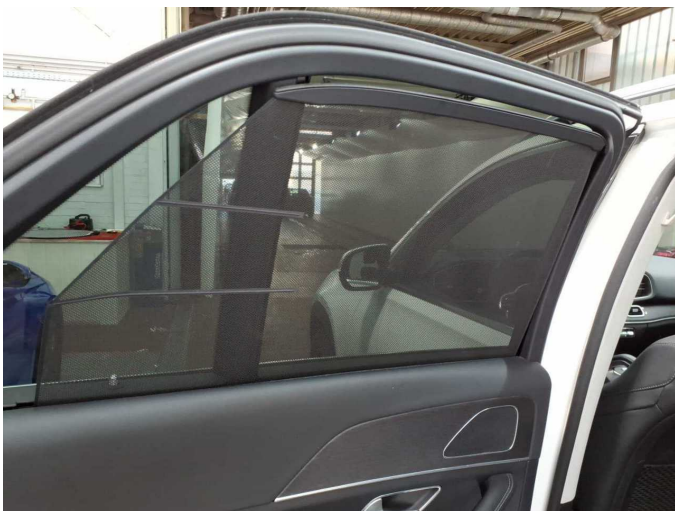


Figure 35: Misc.



Figure 36: Misc.



Figure 37: Misc.



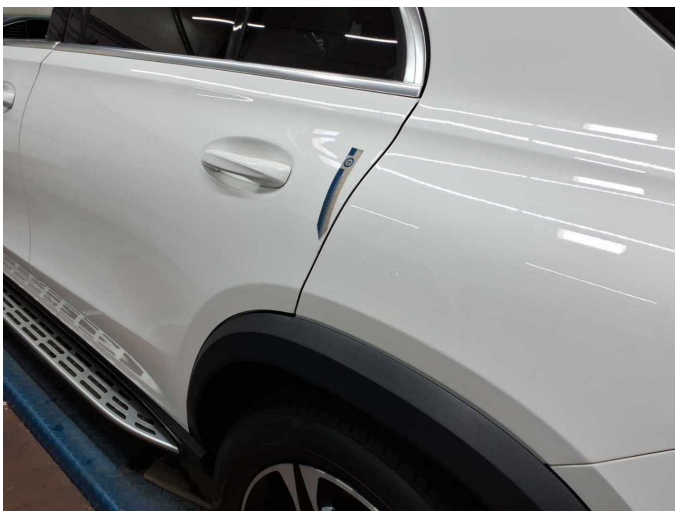
Figure 38: Misc.



Figure 39: Misc.



Figure 40: Misc.



Damage 1: Door - rear left side: Door - Scratch(es) - Smart repair



Damage 1: Door - rear left side: Door - Scratch(es) - Smart repair



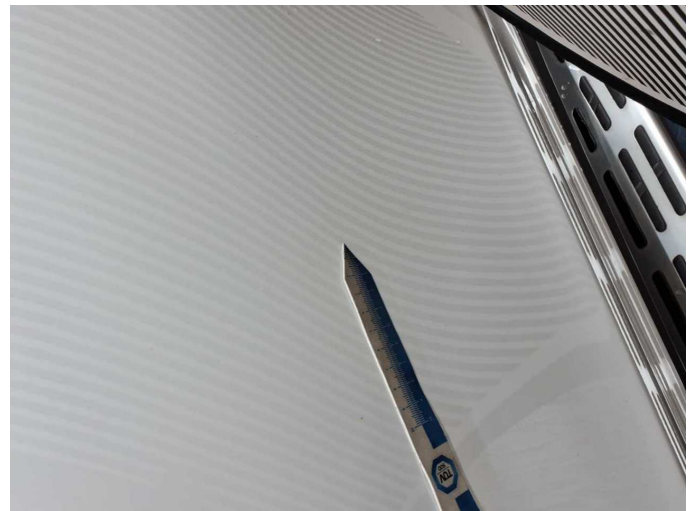
Wear and tear 2: Boot lid / rear door: Boot lid - dent(s) - No deduction



Wear and tear 2: Boot lid / rear door: Boot lid - dent(s) - No deduction



Wear and tear 3: Door - front right side: Door - dent(s) - No deduction



Wear and tear 3: Door - front right side: Door - dent(s) - No deduction



Repainting 1: Side panel - rear right side



Repainting 1: Side panel - rear right side



Wartungshistorie

(gemäß Auftraggeber Informationen)

Fahrgestellnummer: W1N1671091A639318

Hersteller / Modell: MERCEDES-BENZ MERCEDES-BENZ GLE 300 d 4Matic 9G-TRONIC

Datum	KM-Stand	Beschreibung
04.06.2025	48.645	Regelwartungsdienst
07.03.2025	44.482	AU; Reparatur Sonstiges; Reparatur Sonstiges; Systemtest/Eigendiagnose
27.05.2024	36.774	Regelwartungsdienst
23.03.2023	22.055	Regelwartungsdienst