

Expertise

Protocol number: 46365776
Order No. / Reference: 25903019-1
Inspection date: 19 Mar 2026

Manufacturer: Opel

Model: Vivaro 2.0 D Cargo M Autm. Elegance

VIN: VXEVFEHZ7N7014283



Vehicle details

Manufacturer / Type / Model / Equipment

Opel Vivaro 2.0 D Cargo M Autm. Elegance

Vehicle Identification number VXEVFEHZ7N7014283

Mileage (Read) 130,487 km

First registration 1 Jul 2022

Number of holders 2

Next periodical technical inspection 09/2026

(Report not on hand)

Power / Engine displacement 130 kw / 1,997 ccm

Fuel type / Cylinder Diesel / 4

Gearbox / Number of gears Automatic / 8

Type of drive Front drive

Type of vehicle Van

Colour / colour code Jade Weiß

Doors / Seats 4 / 3

Upholstery type Cloth

Colour of upholstery Anthracite-Black

Re-import no

readiness to drive Not roadworthy /
moveable



Vehicle details

Maintenance booklet / proof	Available / incomplete	Next maintenance in	26,980 km
Last service on / at	04/2025 at 114,907 km		
Key is / should be	2 / 2	FZG documents	ZB#2 (B) was available (copy), ZB#1 (S) was not available.
		Letter No.	GJ652913
Previous damage / Accident	None detectable	Repainting	None detectable
Inspection conditions	sufficient	Lifting equipment / pit	yes
Test drive	Not possible to drive	Engine function test	Performed
readiness to drive	Not roadworthy / moveable		
Manufacturer key number/ type code number	3003 / AXZ 01161		
Emission standard	EURO6;WLTP;AR;PI/CI;N1 III, N2	fine dust sticker	
Permitted total weight	2,790 kg	Empty weight	

Tyres

Mounted tyres

#	Tyre size	Type of tyre	Manufacturer	Tread depth
1)	215/65 R16 109T	Summer tyres on Steel rim with wheel cover	Continental	3mm / 3mm
2)	215/65 R16 109T	Summer tyres on Steel rim with wheel cover	Continental	3mm / 3mm

Additional tyres

#	Tyre size	Type of tyre	Manufacturer	Tread depth
1)	215/65 R16 109R	Winter tyres (Without wheel rim)	Semperit	6mm / 6mm
2)	215/65 R16 109T	Winter tyres (Without wheel rim)	Hankook	6mm / 6mm

Replacement

Typ	Tyre size	Type of tyre	Manufacturer	Tread depth
E	215/65 R16 109T	Summer tyres on Steel	Continental	6 mm

Legend: Tread depth information for the left tire is listed first, for the right tire it is listed second on the axle in the direction of travel.



Equipment

Standard equipment

- Storage compartments (storage compartment in the center console, front - storage shelf above the windshield, open - storage compartment in the front doors, suitable for 1.5-liter beverage bottles - glove compartment, open - storage compartment on dashboard, passenger side, closed)
- Exterior mirror housings in black
- Hill Start Assist
- third brake light
- Tachometer
- Electric parking brake
- Electronic Stability Program (ESP Plus)
- Electric front windows (with one-touch function)
- Transmission: 8-speed automatic
- Glove compartment closed at the top (cooled and illuminated)
- Steering column, adjustable for reach and height
- Fog light
- Park pilot, front and rear parking aid (with acoustic warning signal when parking forwards and backwards - blind spot warning - electrically folding exterior mirrors - fog lights)
- Radio: Multimedia radio with 7" color touchscreen display (Automatic music recognition for audio devices with USB connection, Bluetooth audio streaming, Digital radio reception DAB+, Hands-free system via Bluetooth interface, Display of phonebook and call lists, Up to 10 mobile phones can be paired, Display of pictures/films/videos via USB interface, Smartphone integration, Voice control, 1 USB interface, Dual tuner, Graphic equalizer, 4 speakers (8 in double cab Edition or Elegance))
- Seats: Comfort driver's seat and double passenger seat (comfort driver's seat adjustable in 6 ways, with armrest and lumbar support - double passenger seat with storage under the seat - height-adjustable headrests, front)
- Daytime running light
- Doors: Rear wing doors, sheet metal with a 180° opening angle
- Lashing eyes (6) in the cargo area
- Heat-insulating glazing, tinted
- Ignition key (2), foldable
- ABS including brake assist and adaptive brake light
- Driver and passenger side airbags (front airbag, passenger airbag, deactivatable)
- Anti-lock braking system (ABS) with cornering brake control and brake assist
- Exterior mirrors, electrically folding, heated and adjustable
- Battery discharge protection
- On-board computer
- Diesel particulate filter, maintenance-free
- Three-point seat belts on all seats (belt force limiter, front - double belt tensioners, front - warning tone and light for unfastened seat belts, front)
- Speed controller and limiter
- Grab handle in the first row of seats, passenger side
- Air conditioning, front with particle and odor filter (recirculation mode, manual)
- Fatigue detection level 1 coffee break
- Package: Driver Assistance Package 1 (High Beam Assist - Driver Alert System with Camera Monitoring - Lane Keeping Assist - Traffic Sign Recognition with Intelligent Speed Control - Solar Reflect Windscreen)
- Radio accessories: Digital radio reception DAB+ (Digital Audio Broadcasting) (Offers a wider selection of radio programs. Digitally broadcast radio stations and traffic information can be received.)
- Side impact protection
- Side protection strips (in black)
- Speed-sensitive power steering
- Visibility equipment (rain sensor - automatic dipped headlights)
- Sun visors, driver and passenger
- 12-volt power outlet in the center console
- 12V power outlet in the cargo area and in the lower glove compartment (2nd row of seats, left side of cargo area)
- Traction control with engine and brake intervention (TC Plus)
- Doors: Sliding door, passenger side
- Electronic immobilizer
- Central locking with remote control



Extra equipment

- Floor covering: Floor and side wall cladding (wooden floor in the cargo area, 9 mm - anti-slip coating and side wall cladding in the cargo area, 6 mm - full height with aluminum edges)
- Paint finish: Solid color paint
- Steering wheel: Multifunction leather steering wheel
- Package: Design package (front and rear bumpers in body color - door handles in body color - exterior mirror housings in black - exterior mirrors, electrically adjustable, heated and folding - side protection strip in body color - fog lights - LED daytime running lights)
- Package: Comfort Premium Package (180-degree panoramic reversing camera - electrically folding exterior mirrors - keyless open & start - fog lights - park pilot, front and rear parking aid - blind spot warning - dual-zone automatic climate control)
- Upholstery: Fabric / faux leather with black dashboard underside
- Wheels: Steel wheels 7 J x 16 with wheel cover, full surface (tires 215/65 R 16 C 106T)
- Heated seats for driver and front passenger (in conjunction with double passenger seat, the middle seat is not heated - side and head airbags, 1st row of seats)
- Windows: Side windows in the 2nd row, fixed
- Tailgate, glazed (with rear window wiper and rear window heater)
- Automatic climate control: Dual-zone automatic climate control, front (with particle and odor filter - recirculation mode, manual - automatic air distribution - sun position sensor - activated carbon filter)
- Package: INNOVATIONS package (Driver Assistance Package 2 - Head-Up Display - Park Pilot, front and rear parking aid - 180-degree panoramic reversing camera - Blind Spot Warning - Multimedia Navi Pro - Digital radio reception DAB+ - OpelConnect)
- Package: Style package (Xenon headlights with LED daytime running lights - full wheel cover - Design package: (Exterior mirrors in body color, fog lights, bumpers in body color,))
- Tire pressure monitoring system
- Wheels: Spare wheel, steel
- Keyless locking and starting system "Keyless Open & Start"
- Webasto auxiliary heater with remote control
- Partition wall: closed with window (FlexCargo function)
- Partition wall: closed with window, insulated (FlexCargo function)

Brief expert findings

Documents submitted	At the time of the inspection, the vehicle registration certificate Part 2 (title) was available, but the vehicle registration certificate Part 1 (document) was not. (Copy)
VIN comparison	The vehicle identification number (VIN) was read from the vehicle and its conformity with the submitted documents was confirmed by the undersigned during the inspection.
Inspection	The inspection conditions were sufficient for the assessment of the vehicle. Lifting equipment and/or a pit were available for examining the vehicle.
Test drive	It was not possible to drive the vehicle at the time of the inspection.
Engine function test	An engine test run was performed.
readiness to drive	The vehicle was not capable of driving under its own power at the time of inspection, but can be moved on its own axle with the aid of assistance.



Value reducing factors

No.	Component group	Description
1	Trim / covers	Floor mats - Broken / torn - Replace
2	Wheel / tyres	Wheel cover - rear left side - Scratch(es) - Replace
3	Boot lid / rear door	Boot lid - Scratch(es) - Smart repair
4	Wheel / tyres	Tyre - front right side - Damaged - Replace
5	Engine	Engine - Leaking - Perform diagnosis
6	Vehicle glazing	Rear window - Scratch(es) - Loss in value
7	Additional lamp	Daytime running light - Broken / torn - Replace
8	Sill - right side	Sill - dent(s) - Repair and paint
9	Sill - left side	Sill - dent(s) - Repair and paint
10	Interior	Interior - Soiled - Clean
11	Mudguard - left side	Mudguard - left side - Corrosion - Repair and paint
12	Rear bumper	Rear bumper - Scratched - Repair and paint
13	Engine	Engine (MKL an, AGR Ventil mit Abgaskühler muss ersetzt werden) - Sub-function - repair according to calculation
14	Front bumper	Front bumper - Scratch(es) - Paint

Wear and tear

No.	Component group	Description
1	Vehicle glazing	Windscreen with lane departure assistant - Stone chips - No deduction
2	Side panel - rear left side	Side panel - Scratch(es) - No deduction
3	Door - front left side	Door edge - Scratch(es) - No deduction
4	Door - front right side	Door - Scratch(es) - No deduction

The vehicle shows signs of wear and tear commensurate with its age and use.

Missing parts

Description

Roof - Stub aerial

Order/Scope of Order

An order was placed to prepare a sales report for the described vehicle. This report includes the following:

- Description of key vehicle information
- Documentation of equipment features
(*Delivery by third-party service providers*)
- Documentation of damage, defects, missing parts
- Documentation of prior damage, unrepaired prior damage, repainting
- A brief visual or functional inspection of the equipment details, if possible.
(*Functional testing of driver assistance systems is not included in the scope of services!*)
- a photographic documentation of the vehicle



Basis for the order

This product is based on the guidelines for vehicle returns and valuations of light commercial vehicles published by Alphabet Fleet Management GmbH. The expert makes the specific findings in each individual case objectively, within the framework of the prescribed standards, based on their own expertise.

The vehicle inspection takes place in a fully assembled, unassembled state.

Damage or defects that can only be detected during disassembly/diagnostic work or through further investigation remain within the realm of prognostic risk. An increased risk exists due to concealed defects caused by fraudulent misrepresentation and which were not identifiable by the expert.

Damage or defects resulting from normal use or wear and tear of the vehicle will be accepted in accordance with the applicable standard.

There was no explicit identification or monetary consideration of the expected features within the product.

Features which, in their nature and extent, slightly exceed normal use but do not constitute unacceptable damage, will be documented and indicated as signs of wear, if applicable.

Damage or defects that, according to the applicable standard, can no longer be attributed to normal use or wear and tear are listed under "Value Reducing Factors" in the product description.

Depending on the product specification, a monetary ID can be provided. If this takes place, the costs can be 100% or pro rata depending on the vehicle's age and mileage.

Previous damages

No apparent prior damage that had been repaired could be found on the vehicle.

Comments

- Winterreifen sind kein Bestandteil des Auslieferungsumfanges



Figure 1: Diagonal front (left)



Figure 2: Diagonal front (right)



Figure 3: Diagonal rear (left)



Figure 4: Diagonal rear (right)



Figure 5: Interior - front



Figure 6: Interior - rear



Figure 7: Instrument cluster



Figure 8: Instrument panel



Figure 9: Interior 360° view



Figure 10: Cargo area



Figure 11: VIN



Figure 12: Mounted tyres



Figure 13: Documents



Figure 14: Additional tyres



Figure 15: Additional tyres



Figure 16: Navigation



Figure 17: Misc.



Figure 18: Misc.



Figure 19: Misc.

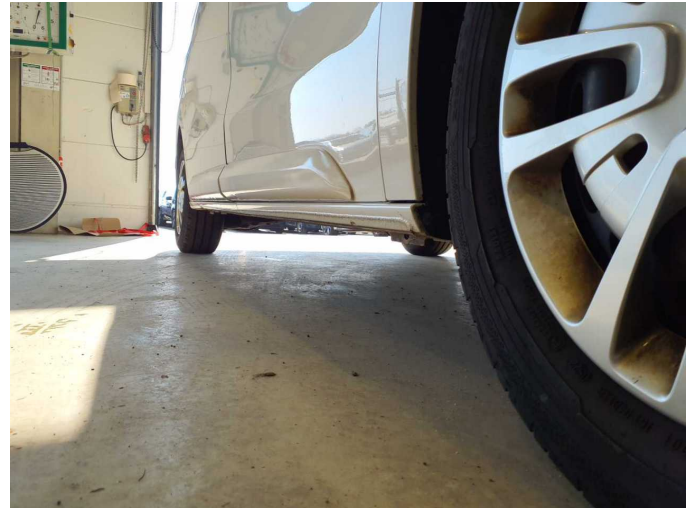


Figure 20: Misc.



Figure 21: Misc.



Figure 22: Misc.

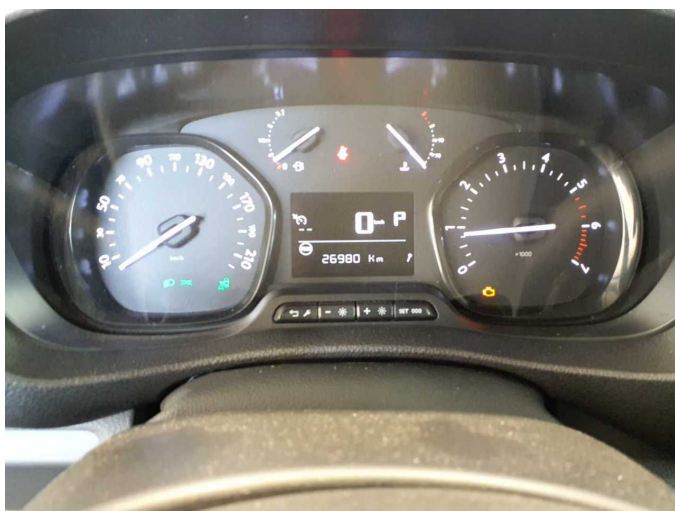


Figure 23: Misc.

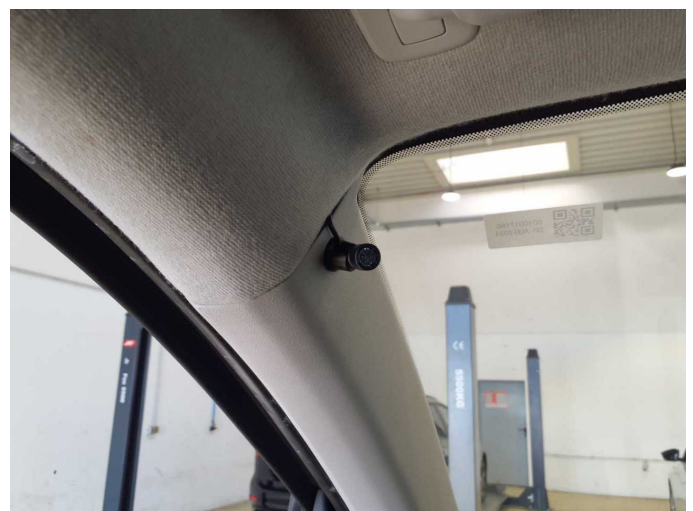


Figure 24: Misc.



Figure 25: Misc.



Figure 26: Misc.

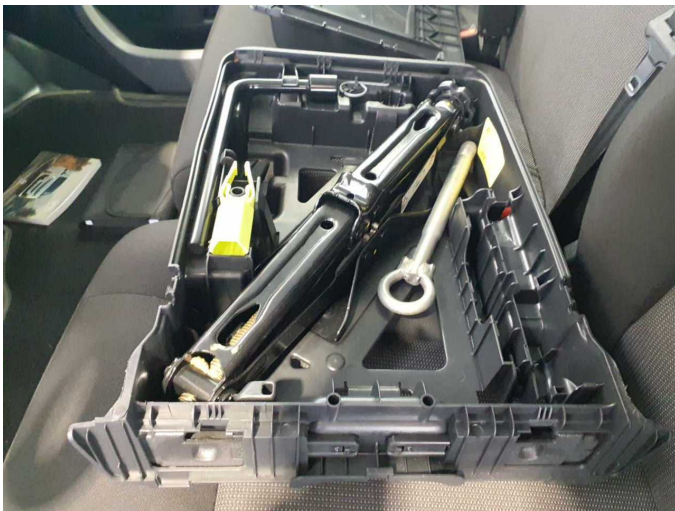


Figure 27: Misc.

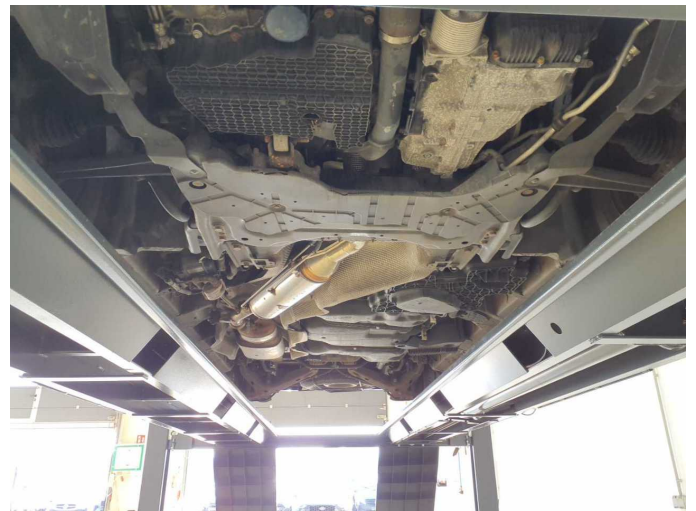


Figure 28: Misc.

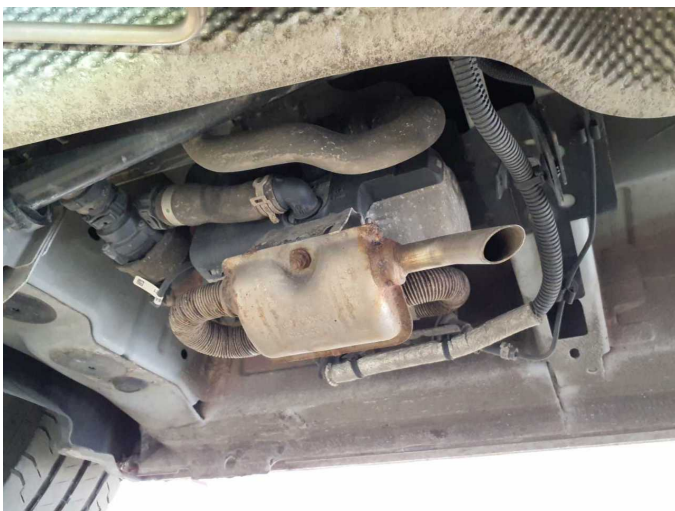


Figure 29: Misc.



Figure 30: Misc.



Damage 1: Trim / covers: Floor mats - Broken / torn - Replace



Damage 1: Trim / covers: Floor mats - Broken / torn - Replace



Damage 2: Wheel / tyres: Wheel cover - rear left side - Scratch(es) - Replace



Damage 2: Wheel / tyres: Wheel cover - rear left side - Scratch(es) - Replace



Damage 3: Boot lid / rear door: Boot lid - Scratch(es) - Smart repair



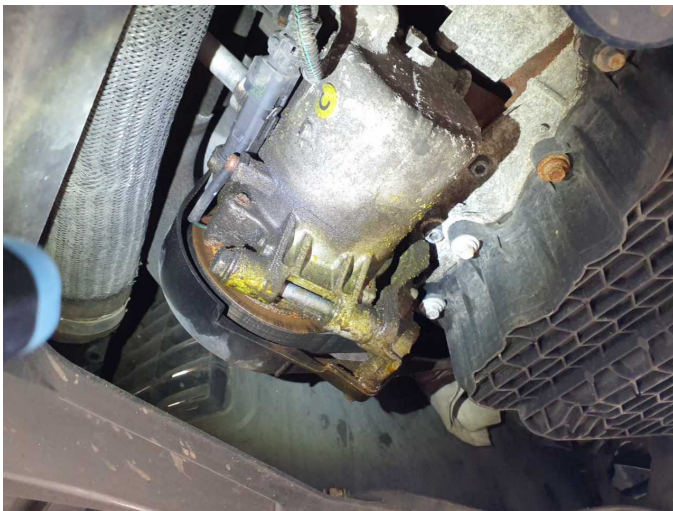
Damage 3: Boot lid / rear door: Boot lid - Scratch(es) - Smart repair



Damage 4: Wheel / tyres: Tyre - front right side - Damaged - Replace



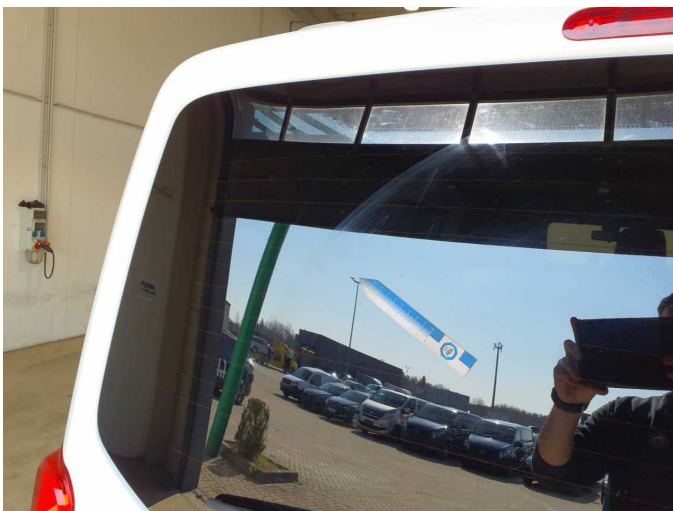
Damage 4: Wheel / tyres: Tyre - front right side - Damaged - Replace



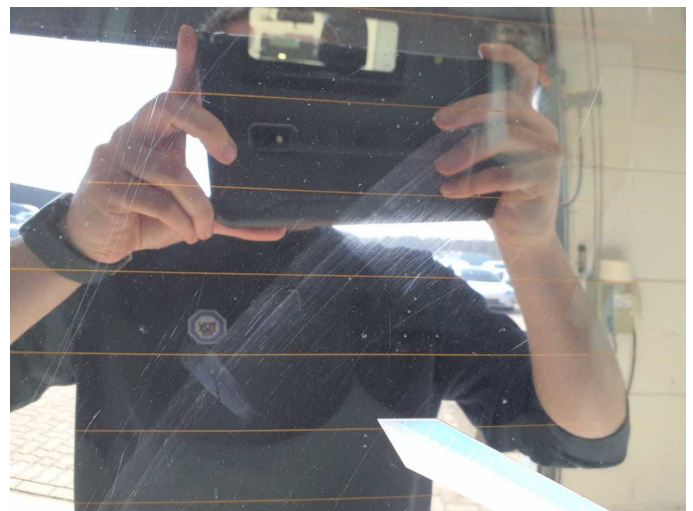
Damage 5: Engine: Engine - Leaking - Perform diagnosis



Damage 5: Engine: Engine - Leaking - Perform diagnosis



Damage 6: Vehicle glazing: Rear window - Scratch(es) - Loss in value



Damage 6: Vehicle glazing: Rear window - Scratch(es) - Loss in value



Damage 6: Vehicle glazing: Rear window - Scratch(es) - Loss in value



Damage 7: Additional lamp: Daytime running light - Broken / torn - Replace



Damage 7: Additional lamp: Daytime running light - Broken / torn - Replace



Damage 8: Sill - right side: Sill - dent(s) - Repair and paint



Damage 8: Sill - right side: Sill - dent(s) - Repair and paint



Damage 9: Sill - left side: Sill - dent(s) - Repair and paint



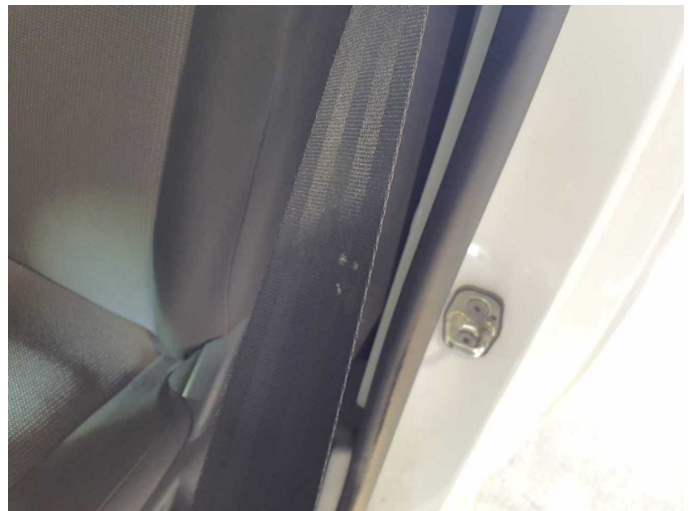
Damage 9: Sill - left side: Sill - dent(s) - Repair and paint



Damage 10: Interior: Interior - Soiled - Clean



Damage 10: Interior: Interior - Soiled - Clean



Damage 10: Interior: Interior - Soiled - Clean



Damage 11: Mudguard - left side: Mudguard - left side - Corrosion - Repair and paint



Damage 11: Mudguard - left side: Mudguard - left side - Corrosion - Repair and paint



Damage 12: Rear bumper: Rear bumper - Scratched - Repair and paint



Damage 12: Rear bumper: Rear bumper - Scratched - Repair and paint



Damage 13: Engine: Engine (MKL an, AGR Ventil mit Abgaskühler muss ersetzt werden) - Sub-function - repair according to calculation



Damage 14: Front bumper: Front bumper - Scratch(es) - Paint



Damage 14: Front bumper: Front bumper - Scratch(es) - Paint



Damage 14: Front bumper: Front bumper - Scratch(es) - Paint



Damage 14: Front bumper: Front bumper - Scratch(es) - Paint



Damage 14: Front bumper: Front bumper - Scratch(es) - Paint



Damage 14: Front bumper: Front bumper - Scratch(es) - Paint



Damage 14: Front bumper: Front bumper - Scratch(es) - Paint



Damage 14: Front bumper: Front bumper - Scratch(es) - Paint



Damage 14: Front bumper: Front bumper - Scratch(es) - Paint



Wear and tear 2: Side panel - rear left side: Side panel - Scratch(es) - No deduction



Wear and tear 2: Side panel - rear left side: Side panel - Scratch(es) - No deduction



Wear and tear 3: Door - front left side: Door edge - Scratch(es) - No deduction



Wear and tear 3: Door - front left side: Door edge - Scratch(es) - No deduction



Wear and tear 4: Door - front right side: Door - Scratch(es) - No deduction



Wear and tear 4: Door - front right side: Door - Scratch(es) - No deduction