

Expertise

Protocol number: 46225008
Order No. / Reference: 26566091
Inspection date: 29 Jun 2026

Manufacturer: Opel

Model: Combo Cargo 1.5 D EHZ Edition

VIN: W0VEFYHT2MJ913399



Vehicle details

Manufacturer / Type / Model / Equipment

Opel Combo Cargo 1.5 D EHZ Edition

Vehicle Identification number W0VEFYHT2MJ913399

Mileage (Read) 47,589 km

First registration 21 Jan 2022

Number of holders 1

Next periodical technical inspection 04/2028

(Report not on hand)

Power / Engine displacement 75 kw / 1,499 ccm

Fuel type / Cylinder Diesel / 4

Gearbox / Number of gears Manual / 5

Type of drive Front drive

Type of vehicle Van

Colour / colour code Jade Weiss

Doors / Seats 3 / 3

Upholstery type Cloth

Colour of upholstery Black-Anthracite

Re-import no

readiness to drive Roadworthy



Vehicle details

Maintenance booklet / proof	digital proof / complete	Next maintenance in	28,360 km
Last service on / at	04/2026 at 47,080 km		
Key is / should be	2 / 2	FZG documents	ZB#2 (B) was available (copy), ZB#1 (S) was not available.
		Letter No.	GF964170
Previous damage / Accident	None detectable	Repainting	None detectable
Inspection conditions	sufficient	Lifting equipment / pit	yes
Test drive	Not performed	Engine function test	Performed
readiness to drive	Roadworthy		
Manufacturer key number/ type code number	1844 / AIQ 00869		
Emission standard	EURO6;WLTP;AQ;PI/CI; N1 II	fine dust sticker	
Permitted total weight	2,390 kg	Empty weight	

Tyres

Mounted tyres

#	Tyre size	Type of tyre	Manufacturer	Tread depth
1)	205/60 R16 96H	Summer tyres on Steel	Michelin	4mm / 4mm
2)	205/60 R16 96H	Summer tyres on Steel	Michelin	4mm / 4mm

Additional tyres

#	Tyre size	Type of tyre	Manufacturer	Tread depth
1)	205/60 R16 96H	Winter tyres on Steel	Pirelli	5mm / 5mm
2)	205/60 R16 96H	Winter tyres on Steel	Pirelli	5mm / 5mm

Legend: Tread depth information for the left tire is listed first, for the right tire it is listed second on the axle in the direction of travel.



Equipment

Standard equipment

- Cover strip for sliding door track - in black
- ABS including brake assist and adaptive brake light
- Driver's side airbag
- Anti-lock braking system (ABS) with cornering brake control and brake assist
- Automatic dipped headlights
- Exterior mirrors, electrically adjustable, heated and manually folding
- Battery discharge protection
- Floor covering: Cargo area floor, painted
- Diesel particulate filter, maintenance-free, including SCR catalytic converter with AdBlue
- Third brake light
- Electronic Stability Program (ESP Plus)
- Electric front windows
- Transmission: 6-speed transmission
- Air conditioning, front, with particle and odor filter - recirculation function, manual - glove compartment, split
- Paint finish: Solid color paint
- Steering column, adjustable for reach and height
- Upholstery: Cloth
- Wheels: Steel wheels 6.5 J x 16 - Tires 205/60 R16 XL 96H - Wheel hub cover
- Side protection strips - in black
- Seats: Single passenger seat, fixed
- Start/Stop System
- 12-volt power outlet in the center console
- Traction control with engine and brake intervention (TC Plus)
- Doors: Sliding door, passenger side, sheet metal
- Immobiliser
- Central locking with remote control

Extra equipment

- Electric parking brake
- Radio: Multimedia radio with 8" color touchscreen display. Automatic music recognition (title, album, artist, cover art) for audio devices with USB connection. Bluetooth audio streaming. Hands-free calling via Bluetooth interface. Phonebook and call list display. Up to 10 mobile phones can be paired. Display of pictures/movies/videos via USB interface. Smartphone integration via Apple CarPlay and Android Auto. USB interface. Dual tuner. Graphic equalizer. 4 speakers. Cruise control. Steering wheel remote control.
- Rear wing doors, asymmetrically split, glazed, 180° opening angle - rear window wiper - rear window heater

- Storage compartments (Edition) - Storage compartment in the instrument panel, driver's side, closed - Storage compartment in the center console, front - Storage shelf above the windshield, open - Storage compartment in the front doors, suitable for 1.5-liter beverage bottles - Glove compartment, closed - Storage compartment on the dashboard, passenger side, closed
- Exterior mirror housings in black
- Hill Start Assist
- On-board computer
- Tachometer
- Three-point seat belts in all seats - Belt force limiter, front - Double belt tensioners, front - Warning tone and light for unfastened seat belts, front
- Speed limiter
- Rear wing doors, asymmetrically split, sheet metal, 180° opening angle
- Headrests (2), front, height adjustable
- Steering wheel remote control
- Rear parking pilot
- Wheels: Tire repair kit - with tire sealant and 12-volt compressor (without jack)
- Side impact protection
- Speed-sensitive power steering
- Seats: Driver's seat adjustable in 6 ways: length, height and backrest angle - with lumbar support and armrest
- Daytime running light
- Partition wall, closed
- Doors: Sheet metal insert, driver's side
- Lashing eyes (6) in the cargo area
- Heat-insulating glazing, tinted
- Central locking: Ignition keys (2), one of which is foldable

- Airbag, driver and passenger side, as well as side airbags
- Driver and passenger side airbags
- Electric windows, front, with one-touch function and anti-pinch protection, as well as comfort closing function via remote control of the central locking system - Electrically adjustable, heated and folding exterior mirrors
- Partition wall with window - Interior rearview mirror, manually dimmable
- Seats: Double passenger seat - Electric parking brake - Storage compartment on the backrest of the middle passenger seat



Brief expert findings

Documents submitted	At the time of the inspection, the vehicle registration certificate Part 2 (title) was available, but the vehicle registration certificate Part 1 (document) was not. (Copy)
VIN comparison	The vehicle identification number (VIN) was read from the vehicle and its conformity with the submitted documents was confirmed by the undersigned during the inspection.
Inspection	The inspection conditions were sufficient for the assessment of the vehicle. Lifting equipment and/or a pit were available for examining the vehicle.
Test drive	No test drive/shunting maneuver was carried out during the inspection of the vehicle.
Engine function test	An engine test run was performed.
readiness to drive	The vehicle was roadworthy at the time of inspection.

Value reducing factors

No.	Component group	Description
1	Front bumper	Front bumper (unpainted) - Scratched - Loss in value
2	Cab	Insulation lining - Damaged - Replace
3	Rear bumper	Rear bumper (unpainted) - Deformed - Replace

Missing parts

Description

Equipment - Tirefit filler
Trim / covers - Floor mats

Order/Scope of Order

An order was placed to prepare a sales report for the described vehicle. This report includes the following:

- Description of key vehicle information
- Documentation of equipment features
(*Delivery by third-party service providers*)
- Documentation of damage, defects, missing parts
- Documentation of prior damage, unrepaired prior damage, repainting
- A brief visual or functional inspection of the equipment details, if possible.
(*Functional testing of driver assistance systems is not included in the scope of services!*)
- a photographic documentation of the vehicle



Basis for the order

This product is based on the guidelines for vehicle returns and valuations published by Alphabet Fleet GmbH. The expert makes the specific findings in each individual case objectively, within the framework of the prescribed standards, based on their own expertise.

The vehicle inspection takes place in a fully assembled, unassembled state.

Damage or defects that can only be detected during disassembly/diagnostic work or through further investigation remain within the realm of prognostic risk. An increased risk exists due to concealed defects caused by fraudulent misrepresentation and which were not identifiable by the expert.

Damage or defects resulting from normal use or wear and tear of the vehicle will be accepted in accordance with the applicable standard.

There was no explicit identification or monetary consideration of the expected features within the product.

Features which, in their nature and extent, slightly exceed normal use but do not constitute unacceptable damage, will be documented and indicated as signs of wear, if applicable.

Damage or defects that, according to the applicable standard, can no longer be attributed to normal use or wear and tear are listed under "Value Reducing Factors" in the product description.

Depending on the product specification, a monetary ID can be provided. If this takes place, the costs can be 100% d or pro rata depending on the vehicle's age and mileage.

Previous damages

No apparent prior damage that had been repaired could be found on the vehicle.

Comments

- Winterradsatz ist kein Bestandteil des Auslieferungsumfangs.



Figure 1: Diagonal front (left)



Figure 2: Diagonal front (right)



Figure 3: Diagonal rear (left)



Figure 4: Diagonal rear (right)



Figure 5: Interior - front



Figure 6: Interior - rear



Figure 7: Instrument cluster



Figure 8: Instrument panel



Figure 9: Interior 360° view



Figure 10: Cargo area



Figure 11: Cargo area

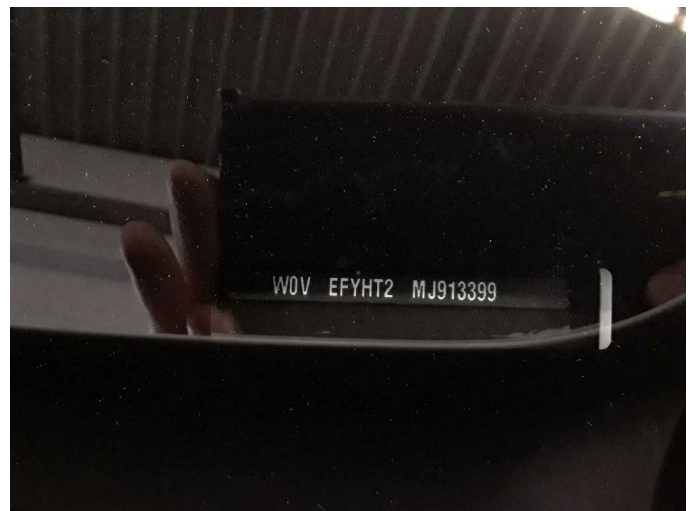


Figure 12: VIN



Figure 13: Mounted tyres

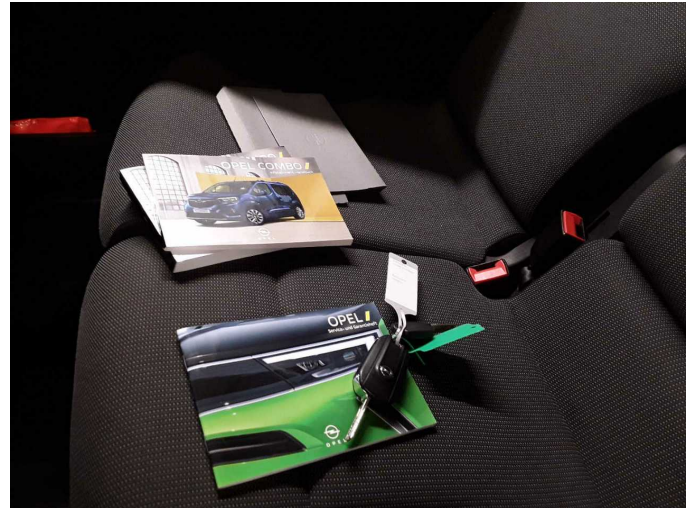


Figure 14: Documents

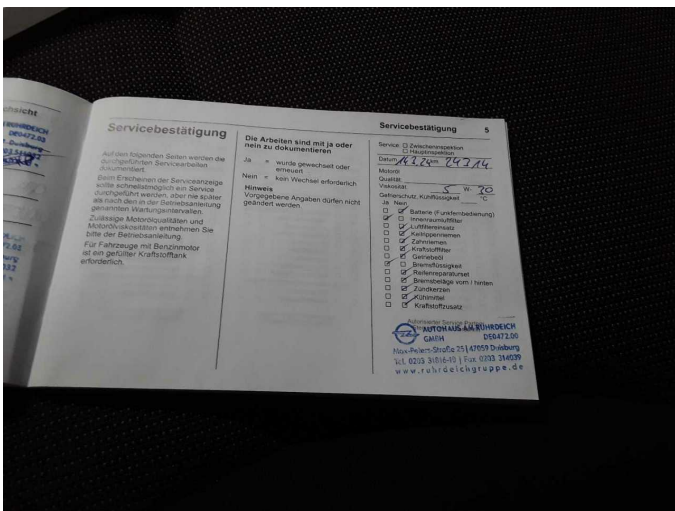


Figure 15: Documents



Figure 16: Additional tyres



Figure 17: Navigation



Figure 18: Misc.



Figure 19: Misc.



Figure 20: Misc.



Figure 21: Misc.



Figure 22: Misc.



Figure 23: Misc.



Figure 24: Misc.



Figure 25: Misc.



Figure 26: Misc.



Figure 27: Misc.



Damage 1: Front bumper: Front bumper (unpainted) - Scratched - Loss in value



Damage 1: Front bumper: Front bumper (unpainted) - Scratched - Loss in value



Damage 2: Cab: Insulation lining - Damaged - Replace



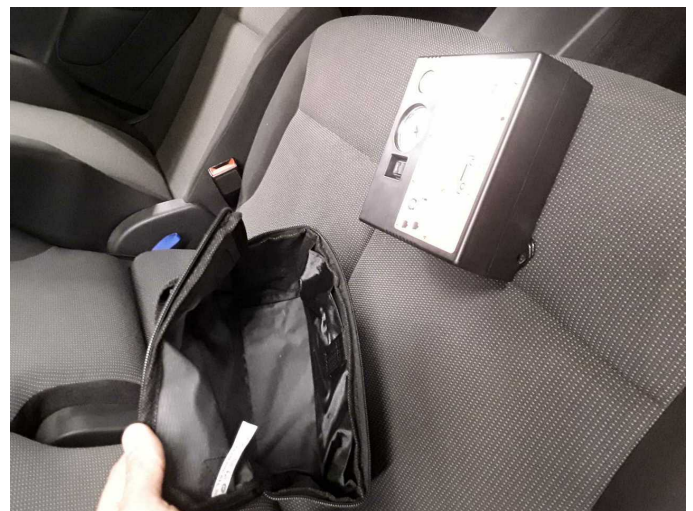
Damage 3: Rear bumper: Rear bumper (unpainted) - Deformed - Replace



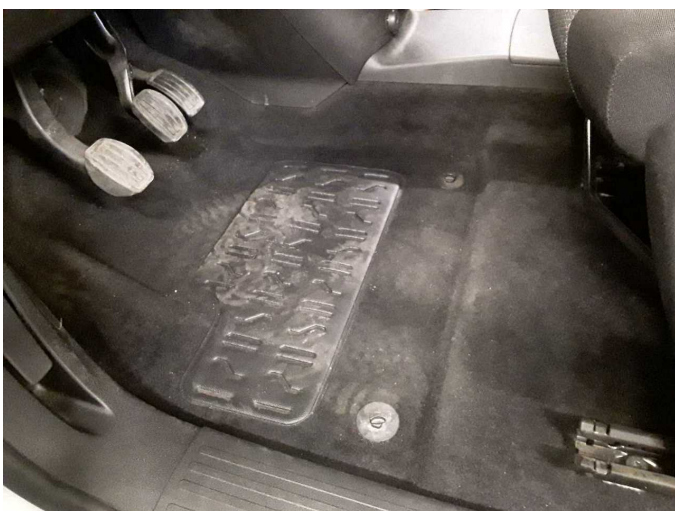
Damage 3: Rear bumper: Rear bumper (unpainted) - Deformed - Replace



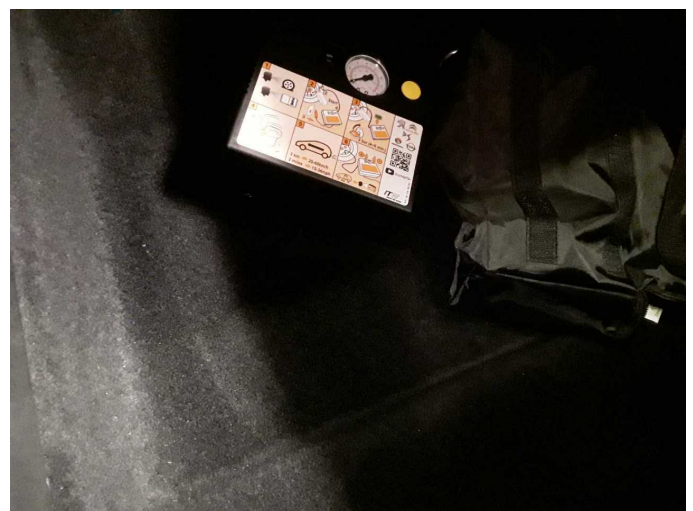
Damage 3: Rear bumper: Rear bumper (unpainted) - Deformed - Replace



Missing part 1: Equipment: Tirefit filler - Missing - Replace



Missing part 2: Trim / covers: Floor mats - Missing - Replace



Missing part 2: Trim / covers: Floor mats - Missing - Replace



Wartungshistorie

(gemäß Auftraggeber Informationen)

Fahrgestellnummer: W0VEFYHT2MJ913399
Hersteller / Modell: OPEL OPEL Combo Cargo 1.5 D EHZ Selection

Datum	KM-Stand	Beschreibung
28.04.2026	47.080	AU
05.03.2026	45.950	Bremsflüssigkeit; Bremsflüssigkeit ern; Kraftstofffilter ern; Luftfiltereinsatz ern; Motoröl b. Wartung; Ölfilter ern; Regelwartungsdienst; Systemtest/ Eigendiagnose; Wartung Sonstiges
22.04.2025	33.373	Motoröl b. Wartung; Ölfilter ern; Wartung Sonstiges
15.03.2024	24.314	Bremsflüssigkeit; Bremsflüssigkeit ern; Motoröl b. Wartung; Ölfilter ern; Regelwartungsdienst; Wartung Sonstiges