

## Expertise

Protocol number: 46008177  
Order No. / Reference: 26420102  
Inspection date: 16 Jun 2026

Manufacturer: Ford

Model: Transit Connect 240 L2 S&S Trend

VIN: WF0SXXWPGSMJ48520



### Vehicle details

#### Manufacturer / Type / Model / Equipment

Ford Transit Connect 240 L2 S&S Trend

**Vehicle Identification number** WF0SXXWPGSMJ48520

**Mileage (Read)** 19,713 km

**First registration** 4 Mar 2021

**Number of holders** 1

**Next periodical technical inspection** 09/2027  
(Report not on hand)

**Power / Engine displacement** 88 kw / 1,499 ccm

**Fuel type / Cylinder** Diesel / 4

**Gearbox / Number of gears** Manual / 6

**Type of drive** Front drive

**Type of vehicle** Van

**Colour / colour code** Frozen White

**Doors / Seats** 4 / 3

**Upholstery type** Cloth

**Colour of upholstery** Black-Anthracite

**readiness to drive** Roadworthy



## Vehicle details

<b>Maintenance booklet / proof</b>	digital proof / complete	<b>Next maintenance in</b>	62 %
<b>Last service on / at</b>	09/2025 at 17,293 km		
<b>Key is / should be</b>	2 / 2	<b>FZG documents</b>	ZB#2 (B) was available (copy), ZB#1 (S) was not available.
		<b>Letter No.</b>	FZ464134
<b>Previous damage / Accident</b>	None detectable	<b>Repainting</b>	None detectable
<b>Inspection conditions</b>	sufficient	<b>Lifting equipment / pit</b>	yes
<b>Test drive</b>	Not performed	<b>Engine function test</b>	Performed
<b>readiness to drive</b>	Roadworthy		
<b>Manufacturer key number/ type code number</b>	8566 / BMN 01615		
<b>Emission standard</b>	EURO6;WLTP;AQ;PI/CI; N1 II	<b>fine dust sticker</b>	
<b>Permitted total weight</b>	2,380 kg	<b>Empty weight</b>	
<b>Dimensions</b>	- x - x 1859		

## Tyres

Mounted tyres				
#	Tyre size	Type of tyre	Manufacturer	Tread depth
1)	205/60 R16 96H	Winter tyres on Light alloy	Goodyear	7mm / 7mm
2)	205/60 R16 96H	Winter tyres on Light alloy	Continental	8mm / 8mm
Additional tyres				
#	Tyre size	Type of tyre	Manufacturer	Tread depth
1)	205/60 R16 96H	Summer tyres on Light alloy	Continental	6mm / 6mm
2)	205/60 R16 96H	Summer tyres on Light alloy	Continental	6mm / 6mm
Replacement				
Typ	Tyre size	Type of tyre	Manufacturer	Tread depth
E	205/60 R16 96H	Summer tyres on Steel	Continental	6 mm

**Legend: Tread depth information for the left tire is listed first, for the right tire it is listed second on the axle in the direction of travel.**



## Equipment

### Standard equipment

- ABS with EBD
- Exterior mirrors, electrically adjustable and heated
- Battery, reinforced
- Rubberized flooring, front
- Diesel particulate filter (DPF) with SCR catalyst and AdBlue tank
- Third brake light
- Front electric windows - with one-touch down function for driver's side
- Ford Easy Fuel - Comfort fuel cap and misfuelling protection
- Heated windscreen including electrically adjustable and heated exterior mirrors
- Warranty: 2-year Ford new car warranty including Ford Assistance mobility guarantee
- Transmission: 6-speed transmission
- Front interior lighting with delay function
- Paint finish: Solid
- Cargo area floor protection plastic, molded
- Steering column, adjustable in height and reach
- Center console, front - open with storage area
- Emergency brake light - hazard warning flashing activation during heavy braking
- Side protection strips, plastic
- Emergency Brake Assist (EBA)
- Front seat belts height-adjustable - Front seat belt tensioners and force limiters - Warning system for unfastened driver's seat belt
- Seats: Seat Package 4 - Driver's seat, 3-way manually adjustable (forward/backward, height, backrest) - Single passenger seat, 2-way manually adjustable (forward/backward/backrest) - Height-adjustable headrests - Manual lumbar support (driver's seat) - "Capitol/City" fabric in Ebony (black) - Seatbelt warning system for driver
- Power outlet: 12-volt connection in storage compartment on dashboard (driver's side)
- Daytime running light
- Child safety lock on sliding doors
- Electronic immobilizer (EPATS)
- Central locking with remote control - door lock only on driver's door - 2 keys, including 1 remote control key
- Driver's side airbag
- Exterior mirrors, narrow mirror format
- Hill start assist
- On-board computer including outside temperature display
- Double-leaf rear doors without windows
- Tachometer
- Electronic Stability Program (ESP) with Traction Control System (TCS) including Torque Vectoring Control and Adaptive Load Control
- FordPass Connect - Information about the current status or location of the vehicle and control of selected vehicle functions via smartphone with the FordPass app - including live traffic information in real time (in conjunction with Ford navigation system including Ford SYNC 3) - including Wi-Fi hotspot
- Glove compartment with lid
- Front air conditioning including semi-electronic recirculation system
- Cargo area lining, side, half-height
- Alternator/Generator
- Fog light
- Wheels: Tire repair kit
- Sliding door at rear, right
- Electro-mechanical power steering (EPAS - Electric Power Assisted Steering)
- Automatic security door lock (45 sec.) - Automatic relocking if no door is opened within 45 seconds of unlocking via remote control.
- Mechanical limited-slip differential
- Front spoiler lip
- Start-stop system
- Dust and pollen filter
- Concealed storage compartment on dashboard
- Power outlet: 12-volt connection on the front center console
- Front bumper and rear bumper end caps painted in body color
- Partition wall to the cargo area without window
- Lashing eyes
- Heat-insulating glazing, lightly tinted
- Auxiliary electric heater (PTC), front



### Extra equipment

- Airbag: Front airbag for passenger - Front airbag for passenger including deactivation function and glove compartment with lid
- Roof rails, aluminum - without crossbars
- Lane keeping assist including lane keeping assist and driver fatigue warning
- Remote control: 2nd remote control key for central locking - instead of conventional key
- Heated rear windows
- Rear window wiper/washer system
- Air conditioning with automatic temperature control (2 zones) for driver and passenger side, separately adjustable
- Fog lights with static cornering lights
- Rear parking pilot system
- Pre-Collision Assist, radar and camera-based with pedestrian and cyclist detection including Automatic Emergency Braking (AEB), Dynamic Brake Support (DBS), Forward Collision Warning (FCW), Lane Keeping Assist including Lane Departure Warning and Driver Alert System
- Tire pressure monitoring system
- Spare wheel: Steel wheel
- Wheels: Alloy wheels 6.5 J x 16 with 205/60 R16 tires - 5x2-spoke design in Sparkle Silver look
- Headlight assistant with day/night sensor including automatically dimming interior mirror including headlights - low beam with delayed shut-off, windscreen wipers with rain sensor
- Electrically adjustable and heated exterior mirrors with blind spot assist - Blind spot assist including cross traffic alert
- Anti-theft alarm system with interior monitoring including double locking and 2 remote control keys
- Electric front windows with one-touch down function for driver and passenger side
- Adaptive cruise control with intelligent speed limiter, including radar- and camera-based pre-collision assist with pedestrian and cyclist detection, lane keeping assist including lane departure warning and driver drowsiness alert, including traffic sign recognition system, leather multifunction steering wheel with 4 spokes in aluminum trim
- Front and rear parking pilot system
- Radio: Ford Audio System 9, Ford Navigation System incl. Ford SYNC 3 with AppLink, 6" touchscreen radio (FM/AM), 2 USB ports, audio remote control on the steering wheel, Bluetooth hands-free system and audio streaming, emergency call assistant, SMS text-to-speech function, SMS sending function, voice control, reversing camera, phase diversity antenna, DAB/DAB+, acoustic and visual route guidance, road map for Europe, TMCpro live traffic, detailed 3D visualization, Michelin travel guide for Europe
- Partition wall to the cargo area with pass-through opening and window

### Brief expert findings

Documents submitted	At the time of the inspection, the vehicle registration certificate Part 2 (title) was available, but the vehicle registration certificate Part 1 (document) was not. (Copy)
VIN comparison	The vehicle identification number (VIN) was read from the vehicle and its conformity with the submitted documents was confirmed by the undersigned during the inspection.
Inspection	The inspection conditions were sufficient for the assessment of the vehicle. Lifting equipment and/or a pit were available for examining the vehicle.
Test drive	No test drive/shunting maneuver was carried out during the inspection of the vehicle.
Engine function test	An engine test run was performed.
readiness to drive	The vehicle was roadworthy at the time of inspection.

### Value reducing factors

No.	Component group	Description
1	Side panel - rear left side	Side panel (Oberhalb) - dent(s) - Smart repair
2	Boot lid / rear door	Seal - Deformed - Replace
3	Trim / covers	Floor covering - rear right side (Laderaum) - Damaged - Replace
4	Front bumper	Front bumper - Dent / paintcoat damage - Repair and paint
5	Side panel - rear left side	Side panel (Unterhalb) - dent(s) - Repair and paint



## Wear and tear

No.	Component group	Description
1	Rear bumper	Rear bumper - Scratch(es) - No deduction

The vehicle shows signs of wear and tear commensurate with its age and use.

## Missing parts

### Description

Equipment - Roof rack system (Querträger für Dachreling)

## Order/Scope of Order

An order was placed to prepare a sales report for the described vehicle. This report includes the following:

- Description of key vehicle information
- Documentation of equipment features  
(*Delivery by third-party service providers*)
- Documentation of damage, defects, missing parts
- Documentation of prior damage, unrepaired prior damage, repainting
- A brief visual or functional inspection of the equipment details, if possible.  
(*Functional testing of driver assistance systems is not included in the scope of services!*)
- a photographic documentation of the vehicle

## Basis for the order

This product is based on the guidelines for vehicle returns and valuations of light commercial vehicles published by Alphabet Fleet Management GmbH. The expert makes the specific findings in each individual case objectively, within the framework of the prescribed standards, based on their own expertise.

The vehicle inspection takes place in a fully assembled, unassembled state.

Damage or defects that can only be detected during disassembly/diagnostic work or through further investigation remain within the realm of prognostic risk. An increased risk exists due to concealed defects caused by fraudulent misrepresentation and which were not identifiable by the expert.

Damage or defects resulting from normal use or wear and tear of the vehicle will be accepted in accordance with the applicable standard.

There was no explicit identification or monetary consideration of the expected features within the product.

Features which, in their nature and extent, slightly exceed normal use but do not constitute unacceptable damage, will be documented and indicated as signs of wear, if applicable.

Damage or defects that, according to the applicable standard, can no longer be attributed to normal use or wear and tear are listed under "Value Reducing Factors" in the product description.

Depending on the product specification, a monetary ID can be provided. If this takes place, the costs can be 100% or pro rata depending on the vehicle's age and mileage.

## Previous damages

No apparent prior damage that had been repaired could be found on the vehicle.



Figure 1: Diagonal front (left)



Figure 2: Diagonal front (right)



Figure 3: Diagonal rear (left)



Figure 4: Diagonal rear (right)

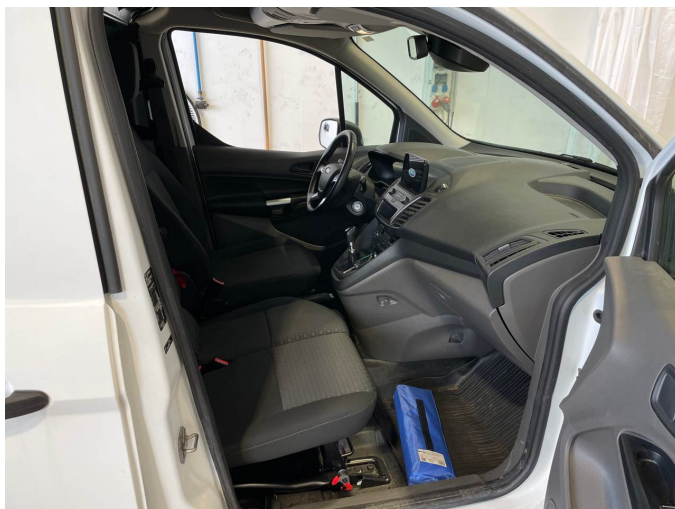


Figure 5: Interior - front



Figure 6: Interior - rear





Figure 13: Documents



Figure 14: Additional tyres



Figure 15: Navigation



Figure 16: Misc.



Figure 17: Misc.



Figure 18: Misc.



Figure 19: Misc.



Figure 20: Misc.



Figure 21: Misc.

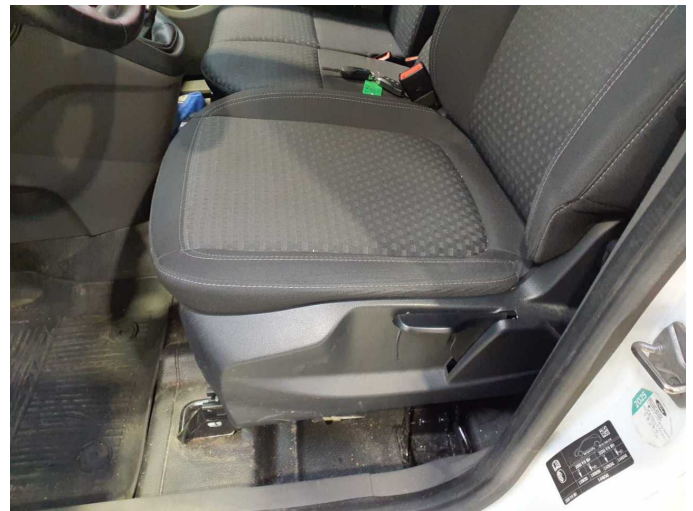


Figure 22: Misc.



Figure 23: Misc.



Figure 24: Misc.



Figure 25: Misc.



Figure 26: Misc.

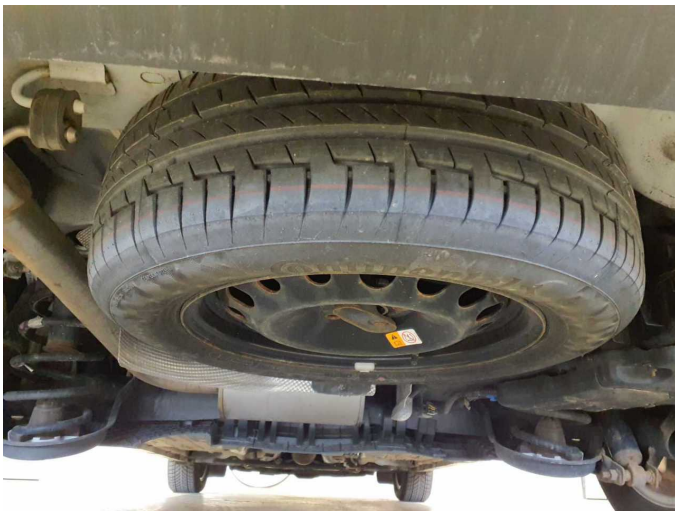


Figure 27: Misc.



Figure 28: Misc.



Figure 29: Misc.



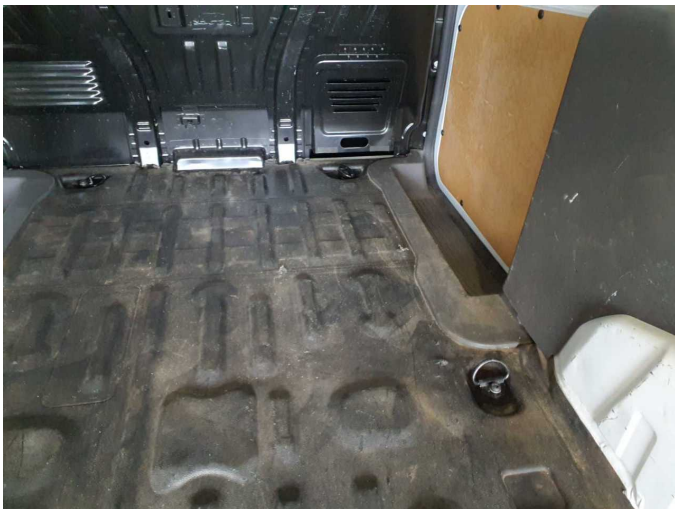
Damage 1: Side panel - rear left side: Side panel (Oberhalb) - dent(s) - Smart repair



**Damage 2:** Boot lid / rear door: Seal - Deformed - Replace



**Damage 2:** Boot lid / rear door: Seal - Deformed - Replace



**Damage 3:** Trim / covers: Floor covering - rear right side (Laderaum) - Damaged - Replace



**Damage 3:** Trim / covers: Floor covering - rear right side (Laderaum) - Damaged - Replace



**Damage 3:** Trim / covers: Floor covering - rear right side (Laderaum) - Damaged - Replace



**Damage 4:** Front bumper: Front bumper - Dent / paintcoat damage - Repair and paint



**Damage 4:** Front bumper: Front bumper - Dent / paintcoat damage - Repair and paint



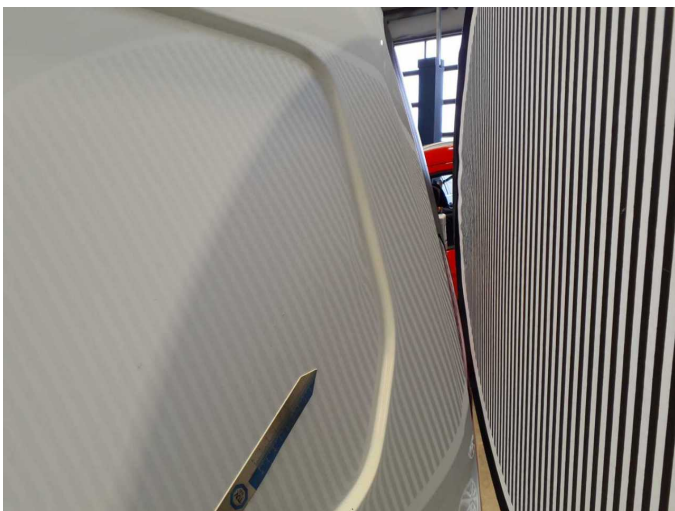
**Damage 4:** Front bumper: Front bumper - Dent / paintcoat damage - Repair and paint



**Damage 4:** Front bumper: Front bumper - Dent / paintcoat damage - Repair and paint



**Damage 5:** Side panel - rear left side: Side panel (Unterhalb) - dent(s) - Repair and paint



**Damage 5:** Side panel - rear left side: Side panel (Unterhalb) - dent(s) - Repair and paint



# Wartungshistorie

(gemäß Auftraggeber Informationen)

Fahrgestellnummer: WF0SXXWPGSMJ48520

Hersteller / Modell: FORD FORD Transit Connect 240 L2 S&S Trend

Datum	KM-Stand	Beschreibung
10.09.2025	17.293	HU + AU; Kraftstofffilter ern; Luftfiltereinsatz ern; Motoröl b. Wartung; Ölfilter ern; Regelwartungsdienst; Wartung Sonstiges
13.12.2024	148.808	Dieselpartikelfilter ern; Systemtest/Eigendiagnose
29.03.2023	7.015	Bremsflüssigkeit; Bremsflüssigkeit ern; HU + AU; Motoröl b. Wartung; Ölfilter ern; Regelwartungsdienst; Wartung Sonstiges