

Expertise

Protocol number: 45945213
Order No. / Reference: 26479198
Inspection date: 15 Jun 2026

Manufacturer: Skoda

Model: Kodiaq 2.0 TDI DSG Tour

VIN: TMBJJ7NS9P8037841



Vehicle details

Manufacturer / Type / Model / Equipment

Skoda Kodiaq 2.0 TDI DSG Tour

Vehicle Identification number TMBJJ7NS9P8037841

Mileage (Read) 148,363 km

First registration 27 Mar 2023

Number of holders 1

Power / Engine displacement 110 kw / 1,968 ccm

Fuel type / Cylinder Diesel / 4

Gearbox / Number of gears Automatic / 7

Type of drive Front drive

Type of vehicle SUV

Colour / colour code Stahl-Grau Uni

Doors / Seats 5 / 5

Upholstery type Cloth

Colour of upholstery Black



Vehicle details

Maintenance booklet / proof	digital proof / complete	Next maintenance in	1,800 km
Last service on / at	09/2025 at 120,109 km		
Key is / should be	2 / 2	FZG documents	ZB#2 (B) was available (copy), ZB#1 (S) was not available.
		Letter No.	GQ557109
Previous damage / Accident	None detectable	Repainting	None detectable
Inspection conditions	sufficient	Lifting equipment / pit	yes
Test drive	Not performed	Engine function test	Performed
Manufacturer key number/ type code number	8004 / ART 03815		
Emission standard	EURO6;WLTP;AP;PI/CI; M, N1 I	fine dust sticker	
Permitted total weight	2,360 kg	Empty weight	

Tyres

Mounted tyres

#	Tyre size	Type of tyre	Manufacturer	Tread depth
1)	235/50 R19 99V	Summer tyres on Light alloy	Pirelli	5mm / 5mm
2)	235/50 R19 99V	Summer tyres on Light alloy	Pirelli	5mm / 5mm

Additional tyres

#	Tyre size	Type of tyre	Manufacturer	Tread depth
1)	215/65 R17 103H	Winter tyres on Light alloy	Bridgestone	5mm / 5mm
2)	215/65 R17 103H	Winter tyres on Light alloy	Pirelli	6mm / 6mm

Replacement

Typ	Tyre size	Type of tyre	Manufacturer	Tread depth
E	215/65 R17 99V	Summer tyres on Steel	Nexen	7 mm

Legend: Tread depth information for the left tire is listed first, for the right tire it is listed second on the axle in the direction of travel.

TÜV SÜD Auto Partner GmbH
Wiesenring 2
04159 Leipzig

Inspection location
Hartmann Compound Professionals
Arnoldschacht 9-11
44894 Bochum



Equipment



Standard equipment

- 12V socket in the center console and in the trunk
- Storage compartments behind the wheel arches in the trunk
- Airbag for driver and front passenger (passenger airbag can be deactivated)
- Airbag, front side airbags
- Anti-lock braking system (ABS)
- Dashboard in black / black, door trim in black
- Electrically folding exterior mirrors including interior and driver's side mirrors with automatic dimming
- Electrically adjustable and heated exterior mirrors with integrated side indicators
- Hydraulic brake assist (HBA)
- Grey headliner
- Roof rails, black
- Anti-theft alarm system (with SAFE system, interior monitoring and tilt sensor)
- Third brake light (in the rear spoiler (LED))
- eCall (automatic emergency call function in case of an accident with airbag deployment)
- Electronic transverse differential lock (XDS+)
- Driving light assistant and rain sensor ((tunnel light, coming and leaving home function))
- High Beam Assist (Light Assist)
- front and rear floor mats
- Closed storage compartment on the driver's side
- Tinted windows
- Isofix anchorage on the outer rear seats including top tether
- Boot cover, roll-up and removable
- Front and rear headrests are height-adjustable.
- LED matrix headlights and dynamic high beam assist (Light Assist)
- Steering wheel: Sport leather steering wheel with multifunction buttons including shift paddles (gear lever with leather elements)
- Front center armrest, including storage compartment
- Engine drag torque control (MSR)
- Multi-collision brake
- Package: Family (Removable waste bin for the door panel - Sunshades for the rear side windows - Door edge protectors)
- Wheel arch cover (front and rear, made of plastic, black textured)
- Radio accessories: 8 speakers
- Radio accessories: Digital radio reception DAB+
- Radio accessories: SmartLink (Android Auto and Apple CarPlay)
- Wheels: 19" Procyon Aero alloy wheels, grey-gloss turned (7Jx19 tires 235/50 R19 99V ET43)
- Rear seat backrest split 60:40, foldable, longitudinally adjustable, backrest angle adjustable
- Electromechanical power steering
- Seats: Heated front and outer rear seats
- Seats: Adjustable lumbar support in the front seats
- Seats: Height-adjustable front seats
- Storage compartment on the left wheel arch
- Option to opt out of standard extended warranty
- front aero windshield wipers
- Airbag, driver's knee airbag
- Airbag, head airbags
- Allergen filter
- Traction control (ASR)
- Traveller Plus (DSG) assistance system (Adaptive Cruise Control ACC (control range up to 210 km/h) - Lane Assist - Adaptive Lane Guidance - Park Assist - Traffic Jam and Emergency Assist - Traffic Sign Recognition)
- Hill start assist
- Care Connect: Proactive services (10-year term) (Remote Access (1-year term))
- Decorative inlay Anodized Cross
- Diesel particulate filter
- Tachometer
- Easy Start (start-stop button)
- Electric tailgate operation including comfort opening
- Electronic parking brake including auto-hold function
- ESC Electronic Stability Control
- Electric windows front and rear (including anti-pinch protection and child safety lock)
- Front radar assistant including city emergency braking function with pedestrian detection
- Transmission: 7-speed dual-clutch transmission (DSG)
- Illuminated glove compartment
- Kessy - keyless entry and start-stop system
- Climatronic air conditioning (2-zone) (fully automatic, separately adjustable for driver and front passenger, including humidity sensor, odor and allergen filter and air-conditioned glove compartment)
- LED taillights in crystal glass look & LED license plate lights
- Reading lights at the front of the headliner
- Rear center armrest with cup holders and pass-through option
- Multifunction display in the instrument cluster, color
- Fog lights with integrated LED daytime running lights
- Parking assist
- Front and rear parking sensors
- Upholstery: Cloth
- Radio: Amundsen Infotainment System (Tour) (Amundsen Dynamic Radio Navigation System - 8" Capacitive Color Display - Voice Control - Infotainment Online (1-Year Subscription))
- Radio accessories: Wireless SmartLink
- Tire pressure monitoring
- Wheels: RunFlat tires with Seal technology (self-sealing tires)
- Heated windshield washer nozzles, front
- Headlights washer / wiper system
- Kodiaq safety belts (Height-adjustable three-point seat belts in the front, with belt tensioners - Three three-point seat belts in the rear - Belt fastening indicator in the front and in the second row of seats)



- Skoda Care Connect (SOS emergency call function (eCall, including automatic activation in the event of an accident with airbag deployment) - Mobility service (connection for rapid assistance in case of breakdown) - Information service (connection to the hotline for all questions regarding vehicle functions) - Free remote vehicle access for one year with access to vehicle data/functions via smartphone, e.g., parking position, activating hazard warning lights, current fuel level, etc.)
- Lashing eyes in the trunk
- Central locking with remote control (two vehicle keys)
- Sun visor on driver and passenger side with illuminated vanity mirror
- Sunshade roller blind for the rear side windows
- Sunset (rear window and rear side windows tinted dark)
- Telephone: Comfort hands-free telephone system including phone box (with inductive charging function (connection via external antenna))
- Front door sill trims
- Variable fastening concept in the trunk
- Immobiliser

Extra equipment

- 17" Premium Alloy Winter Wheels
- Paint finish: Special paint finish, solid color
- Package: Business Columbus (Tour) (Dynamic radio navigation system Columbus - 9.2" capacitive color display - Digital instrument cluster (Virtual Cockpit) - 230V socket and one USB charging port (Type-C) - Luggage net partition - Infotainment Online (3-year subscription))
- Swiveling trailer hitch (with electric release, including trailer stabilization)
- Wheels: 17" steel spare wheel (6.5Jx17 tires 215/65 R17 ET38 incl. jack, wheel bolt wrench, load floor cover replaces tire mobility kit)
- Rear view camera

Brief expert findings

Documents submitted	At the time of the inspection, the vehicle registration certificate Part 2 (title) was available, but the vehicle registration certificate Part 1 (document) was not. (Copy)
VIN comparison	The vehicle identification number (VIN) was read from the vehicle and its conformity with the submitted documents was confirmed by the undersigned during the inspection.
Inspection	The inspection conditions were sufficient for the assessment of the vehicle. Lifting equipment and/or a pit were available for examining the vehicle.
Test drive	No test drive/shunting maneuver was carried out during the inspection of the vehicle.
Engine function test	An engine test run was performed.

Value reducing factors

No.	Component group	Description
1	Door - front left side	Door seal - Broken / torn - Replace
2	Door - rear right side	Brightware - lower - Scratch(es) - Replace
3	Bonnet	Bonnet - Corrosion - Paint

Wear and tear

No.	Component group	Description
1	Door - front right side	Door - Stone chips - No deduction

The vehicle shows signs of wear and tear commensurate with its age and use.



Order/Scope of Order

An order was placed to prepare a sales report for the described vehicle. This report includes the following:

- Description of key vehicle information
- Documentation of equipment features
(Delivery by third-party service providers)
- Documentation of damage, defects, missing parts
- Documentation of prior damage, unrepaired prior damage, repainting
- A brief visual or functional inspection of the equipment details, if possible.
(Functional testing of driver assistance systems is not included in the scope of services!)
- a photographic documentation of the vehicle

Basis for the order

This product is based on the guidelines for vehicle returns and valuations published by Alphabet Fleet GmbH. The expert makes the specific findings in each individual case objectively, within the framework of the prescribed standards, based on their own expertise.

The vehicle inspection takes place in a fully assembled, unassembled state.

Damage or defects that can only be detected during disassembly/diagnostic work or through further investigation remain within the realm of prognostic risk. An increased risk exists due to concealed defects caused by fraudulent misrepresentation and which were not identifiable by the expert.

Damage or defects resulting from normal use or wear and tear of the vehicle will be accepted in accordance with the applicable standard.

There was no explicit identification or monetary consideration of the expected features within the product.

Features which, in their nature and extent, slightly exceed normal use but do not constitute unacceptable damage, will be documented and indicated as signs of wear, if applicable.

Damage or defects that, according to the applicable standard, can no longer be attributed to normal use or wear and tear are listed under "Value Reducing Factors" in the product description.

Depending on the product specification, a monetary ID can be provided. If this takes place, the costs can be 100% or pro rata depending on the vehicle's age and mileage.

Previous damages

No apparent prior damage that had been repaired could be found on the vehicle.



Figure 1: Diagonal front (left)



Figure 2: Diagonal front (right)



Figure 3: Diagonal rear (left)



Figure 4: Diagonal rear (right)



Figure 5: Interior - front



Figure 6: Interior - rear



Figure 7: Instrument cluster



Figure 8: Instrument panel



Figure 9: Interior 360° view



Figure 10: Cargo area

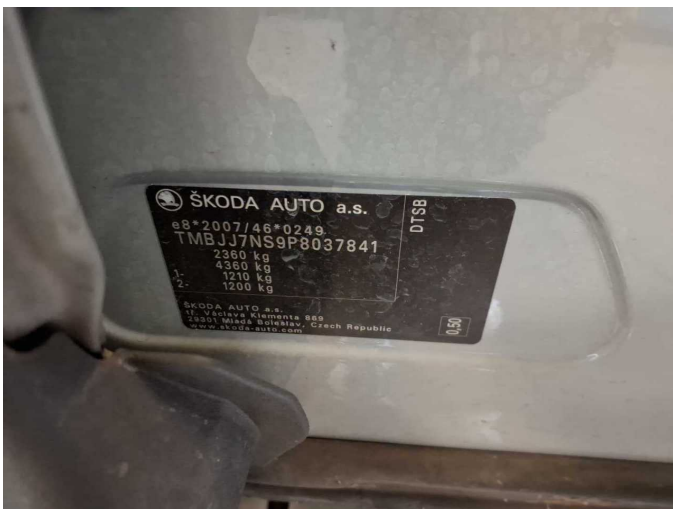


Figure 11: VIN



Figure 12: Mounted tyres



Figure 13: Documents



Figure 14: Additional tyres



Figure 15: Navigation



Figure 16: Misc.



Figure 17: Misc.



Figure 18: Misc.



Figure 19: Misc.



Figure 20: Misc.

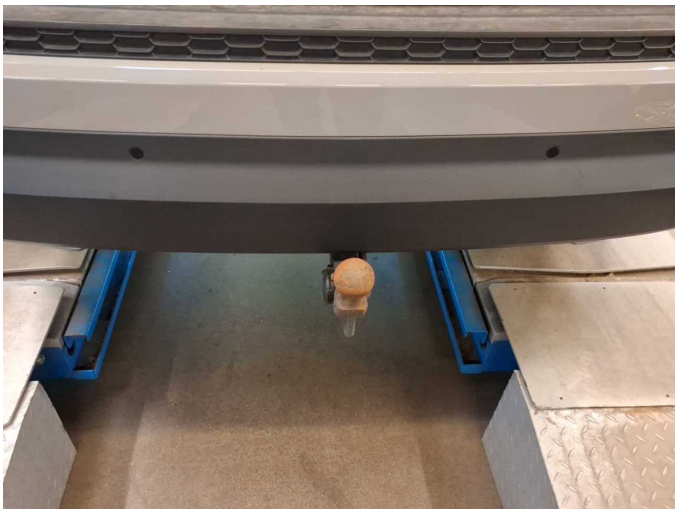


Figure 21: Misc.



Figure 22: Misc.



Figure 23: Misc.

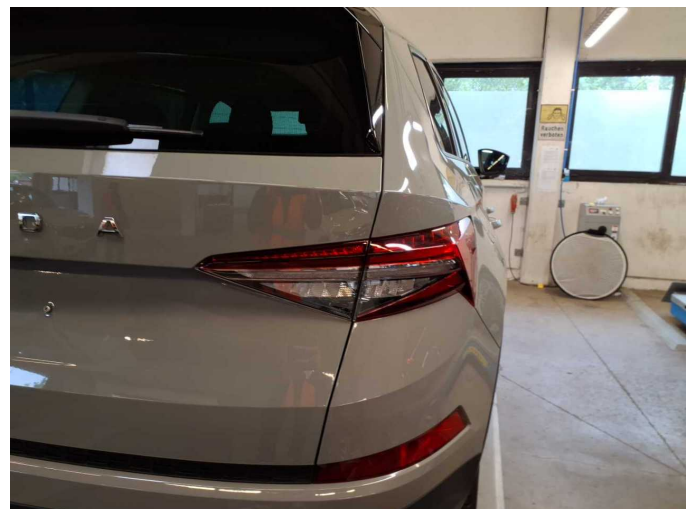


Figure 24: Misc.



Figure 25: Misc.



Figure 26: Misc.



Figure 27: Misc.

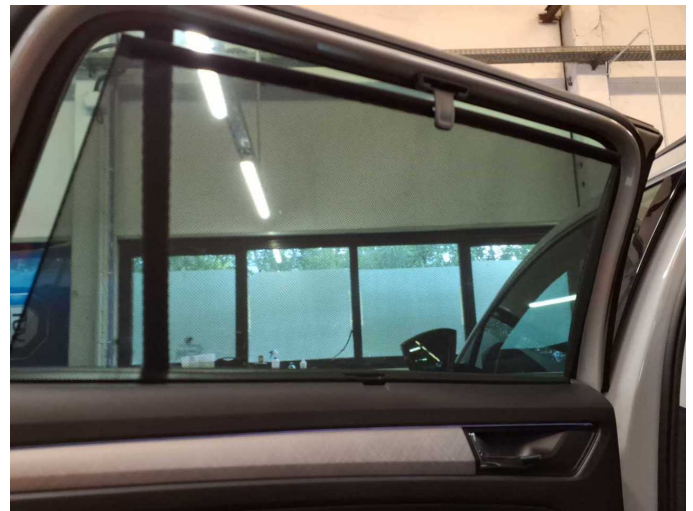


Figure 28: Misc.



Figure 29: Misc.



Figure 30: Misc.



Figure 31: Misc.



Figure 32: Misc.



Figure 33: Misc.



Figure 34: Misc.



Figure 35: Misc.

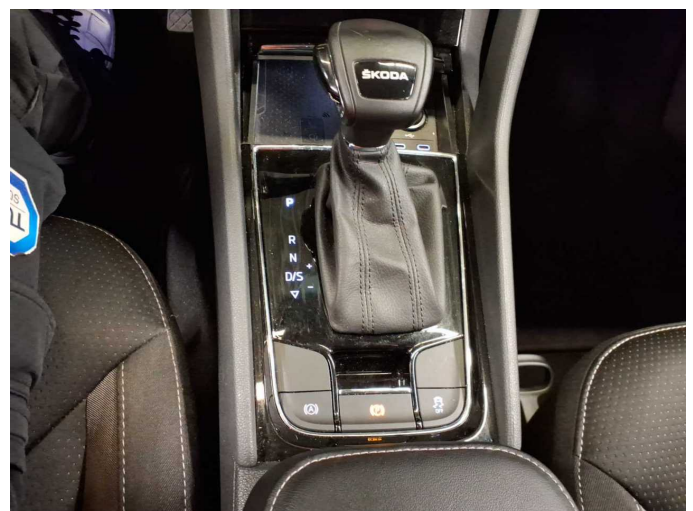


Figure 36: Misc.



Damage 1: Door - front left side: Door seal - Broken / torn - Replace



Damage 1: Door - front left side: Door seal - Broken / torn - Replace



Damage 2: Door - rear right side: Brightware - lower - Scratch(es) - Replace



Damage 2: Door - rear right side: Brightware - lower - Scratch(es) - Replace



Damage 2: Door - rear right side: Brightware - lower - Scratch(es) - Replace



Damage 3: Bonnet: Bonnet - Corrosion - Paint



Damage 3: Bonnet: Bonnet - Corrosion - Paint



Wartungshistorie

(gemäß Auftraggeber Informationen)

Fahrgestellnummer: TMBJJ7NS9P8037841
Hersteller / Modell: SKODA SKODA Kodiaq 2.0 TDI DSG Tour

Datum	KM-Stand	Beschreibung
11.09.2025	120.109	Getriebeöl ern/prüfen; Motoröl b. Wartung; Ölfilter ern; Regelwartungsdienst; Wartung Sonstiges
17.02.2025	90.765	Bremse Sonstiges; Bremsflüssigkeit; Bremsflüssigkeit ern; Bremsklötze hinten; Bremsklötze vorne; Bremsscheiben hinten; Bremsscheiben vorne; Kraftstofffilter ern; Luftfiltereinsatz ern; Motoröl b. Wartung; Ölfilter ern; Regelwartungsdienst; Systemtest/Eigendiagnose; Wartung Sonstiges
21.06.2024	60.998	Motoröl b. Wartung; Ölfilter ern; Regelwartungsdienst; Reparatur Sonstiges; Wartung Sonstiges
03.11.2023	30.819	Motoröl b. Wartung; Ölfilter ern; Regelwartungsdienst; Wartung Sonstiges