

Expertise

Protocol number: 45949178
Order No. / Reference: 26583934
Inspection date: 15 Jun 2026

Manufacturer: Volvo

Model: XC40 T5 Recharge DKG Plus Dark

VIN: YV1XZBBVXP2972612



Vehicle details

Manufacturer / Type / Model / Equipment

Volvo XC40 T5 Recharge DKG Plus Dark

Vehicle Identification number YV1XZBBVXP2972612

Mileage (Read) 42,269 km

First registration 27 Dec 2022

Number of holders 1

Next periodical technical inspection 02/2028

(Report on hand)

Power / Engine displacement 132 kw / 1,477 ccm

Fuel type / Cylinder Hybr.B/E ext.auf1 / 3

Gearbox / Number of gears Automatic / 7

Type of drive Front drive

Type of vehicle SUV

Colour / colour code Black Stone

Doors / Seats 5 / 5

Upholstery type Cloth

Colour of upholstery Grey-Anthracite

Vehicle with smoke odor no



Vehicle details			
Maintenance booklet / proof	digital proof / complete	Next maintenance in	249 Tag(e)
Last service on / at	02/2026 at 40,610 km		
Key is / should be	2 / 2	FZG documents	ZB#2 (B) was available (copy), ZB#1 (S) was not available.
		Letter No.	GQ202607
Previous damage / Accident	None detectable	Repainting	None detectable
Inspection conditions	sufficient	Lifting equipment / pit	yes
Test drive	short drive on the company premises	Engine function test	Performed
Manufacturer key number/ type code number	9101 / BOD 00027		
Emission standard	EURO6;WLTP;AP;PI/CI; M, N1 I	fine dust sticker	
Permitted total weight	2,290 kg	Empty weight	

Tyres

Mounted tyres				
#	Tyre size	Type of tyre	Manufacturer	Tread depth
1)	235/55 R18 100H	Winter tyres on Light alloy	Dunlop	6mm / 6mm
2)	235/55 R18 100H	Winter tyres on Light alloy	Dunlop	6mm / 6mm
Additional tyres				
#	Tyre size	Type of tyre	Manufacturer	Tread depth
1)	235/55 R18 104H	All-season tyres on Light alloy	Michelin	0mm / 0mm
2)	235/55 R18 104H	All-season tyres on Light alloy	Michelin	6mm / 6mm
Replacement				
Typ	Tyre size	Type of tyre	Manufacturer	Tread depth
	Tirefit	Expiration date 09/2027		

Legend: Tread depth information for the left tire is listed first, for the right tire it is listed second on the axle in the direction of travel.

TÜV SÜD Auto Partner GmbH
Wiesenring 2
04159 Leipzig

Inspection location
ARS Altmann AG Niederlassung
Wolnzach
Feierabendmühle 2
85283 Wolnzach



Equipment



Standard equipment

- Acoustic Vehicle Alerting System (AVAS)
- Airbags
- Ambient lighting
- Fold-out (bag) hook on the glove compartment
- Electrically folding exterior mirrors
- Heated exterior mirrors and rear window
- Hill start assist
- third brake light
- Roof rails in high-gloss black (integrated)
- Digital Instrumentation
- Aluminum door sill plates with Recharge lettering, front
- Electronic Stability Control
- Chassis: Dynamically designed
- Automatic emergency braking
- Transmission: 7-speed dual-clutch transmission
- Front seat belt height adjustment
- Automatic tailgate
- rear window wiper
- Interior lighting
- Keyless Drive
- Child safety lock for the rear doors (electric)
- Comfort opening/closing of the side windows via radio remote control
- Charging cable Schuko/Type 2 (Mode 2)
- Steering wheel adjustable for height and reach
- Steering wheel: Sports steering wheel
- Rear center armrest with two integrated cup holders
- Navigation: Sensus navigation system
- Emergency brake lights
- Otto particulate filter
- Package: Business Package
- Package: Seat Comfort Package
- Electric parking brake
- Radio: Premium Sound audio system by Harman Kardon
- Radio accessories: Two USB-C ports on the back of the center console
- Rain sensor
- Run-off Road Protection
- Wheels: Tire sealant
- Safety Assistance
- Side window trim in high-gloss black (bottom)
- Speed-sensitive power steering
- Seats: Driver's seat height and length adjustable including tilt adjustment
- Seats: Rear seats in a 40/60 split or fully foldable
- Seats: Whiplash Protection System WHIPS
- Sport exterior mirrors in high-gloss black
- Electric auxiliary heater with timer
- Start/Stop technology
- Textile floor mats: Sport textile floor mats front and rear
- Passenger side airbag can be deactivated
- Active safety belts with belt tensioners
- Anti-lock braking system (ABS) with electronic brake force distribution
- Electrically adjustable exterior mirrors
- Hill descent control
- LED turn signals integrated into the exterior mirrors
- Roof edge spoiler
- Deactivating the high-voltage battery
- Pass-through hatch behind the center armrest in the rear
- Electronic differential lock
- Advanced air purification system
- Electric windows front and rear
- Luggage compartment partition net
- Cup holders (two) in the center console
- Hooks for carrier bags in the luggage compartment
- Heated rear window
- Interior and exterior mirrors automatically dimming
- ISOFIX mounting for the outer rear seats
- Keyless Start
- Automatic climate control with 2-zone temperature control
- Front headrests
- Paint finish: Solid
- LED headlights "Thor's Hammer"
- Steering wheel: Multifunction buttons on the steering wheel
- Illuminated makeup mirror for driver and front passenger
- Front center armrest with integrated storage compartment
- rear fog light
- Optical underide protection front and rear in high-gloss black
- Package: Parking Assistance Package
- Package: Winter Package
- Upholstery: Textile (Rivel Chine)
- Radio accessories: Two USB ports in the front center console
- Recharge emblem on the C-pillar
- Tire pressure monitoring system
- Wheels: 18" 5-spoke alloy wheels, diamond cut/high-gloss black
- Gearshift lever made of Swedish crystal glass
- Sensus Connect infotainment system
- Seats: Adjustable (manual) leg rest for driver and front passenger seats
- Seats: Lumbar support (4-way adjustable) for driver and front passenger seats
- Sport front and rear apron
- Sport front grille with horizontal struts and grille surround in high-gloss black
- 12-volt power outlet in the luggage compartment
- Trailer Stability Assist (TSA)
- Glazing: Colored glazing
- Volvo On Call with WiFi hotspot



- First aid kit and warning triangle
- Lashing eyes (four) in the luggage compartment
- Warning tone/indicator when seat belts are not fastened (for all seats)

- Immobiliser
- Central locking system with two remote controls and integrated emergency keys

Extra equipment

- Windscreen, heater

Brief expert findings

Documents submitted	At the time of the inspection, the vehicle registration certificate Part 2 (title) was available, but the vehicle registration certificate Part 1 (document) was not. (Copy)
VIN comparison	The vehicle identification number (VIN) was read from the vehicle and its conformity with the submitted documents was confirmed by the undersigned during the inspection.
Inspection	The inspection conditions were sufficient for the assessment of the vehicle. Lifting equipment and/or a pit were available for examining the vehicle.
Test drive	A short maneuvering and shunting exercise was carried out on the company premises.
Engine function test	An engine test run was performed.

Value reducing factors

No.	Component group	Description
1	Door - front left side	Door edge - Scratch(es) - Smart repair
2	Roof	Cowl - left side - Broken / torn - Replace
3	Front bumper	Front bumper - Scratch(es) - Smart repair
4	2nd wheel set	2 tyres (Sommerreifen) - Worn - Replace
5	Rear bumper	Rear bumper - Scratched - Paint
6	Door - front right side	Door - Scratch(es) - Paint

Wear and tear

No.	Component group	Description
1	Bonnet	Bonnet - Stone chips - No deduction
2	Vehicle glazing	Windscreen - Stone chips - No deduction
3	Tail light	Tail lamp - right side - Scratch(es) - No deduction

The vehicle shows signs of wear and tear commensurate with its age and use.

Order/Scope of Order

An order was placed to prepare a sales report for the described vehicle. This report includes the following:

- Description of key vehicle information
- Documentation of equipment features
(*Delivery by third-party service providers*)
- Documentation of damage, defects, missing parts
- Documentation of prior damage, unrepaired prior damage, repainting
- A brief visual or functional inspection of the equipment details, if possible.
(*Functional testing of driver assistance systems is not included in the scope of services!*)
- a photographic documentation of the vehicle



Basis for the order

This product is based on the guidelines for vehicle returns and valuations published by Alphabet Fleet GmbH. The expert makes the specific findings in each individual case objectively, within the framework of the prescribed standards, based on their own expertise.

The vehicle inspection takes place in a fully assembled, unassembled state.

Damage or defects that can only be detected during disassembly/diagnostic work or through further investigation remain within the realm of prognostic risk. An increased risk exists due to concealed defects caused by fraudulent misrepresentation and which were not identifiable by the expert.

Damage or defects resulting from normal use or wear and tear of the vehicle will be accepted in accordance with the applicable standard.

There was no explicit identification or monetary consideration of the expected features within the product.

Features which, in their nature and extent, slightly exceed normal use but do not constitute unacceptable damage, will be documented and indicated as signs of wear, if applicable.

Damage or defects that, according to the applicable standard, can no longer be attributed to normal use or wear and tear are listed under "Value Reducing Factors" in the product description.

Depending on the product specification, a monetary ID can be provided. If this takes place, the costs can be 100% d or pro rata depending on the vehicle's age and mileage.

Previous damages

No apparent prior damage that had been repaired could be found on the vehicle.

Comments

Der montierte Winterradsatz ist kein Bestandteil der Auslieferungsumfangs.



Figure 1: Diagonal front (left)



Figure 2: Diagonal front (right)



Figure 3: Diagonal rear (left)



Figure 4: Diagonal rear (right)



Figure 5: Interior - front

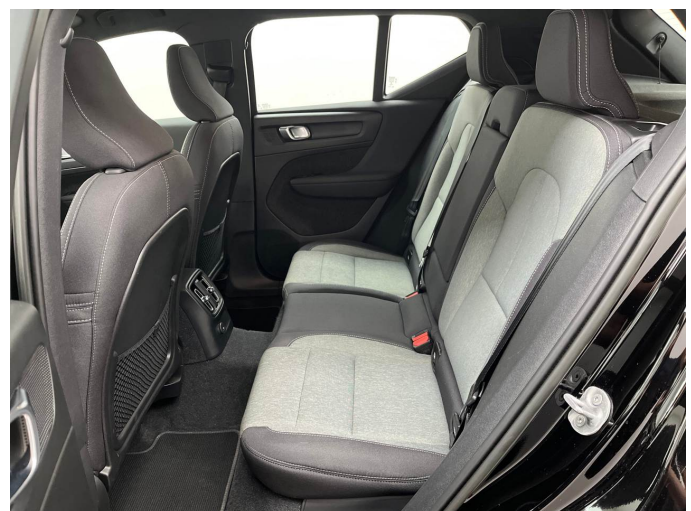


Figure 6: Interior - rear



Figure 7: Instrument cluster



Figure 8: Instrument panel



Figure 9: Interior 360° view



Figure 10: Cargo area

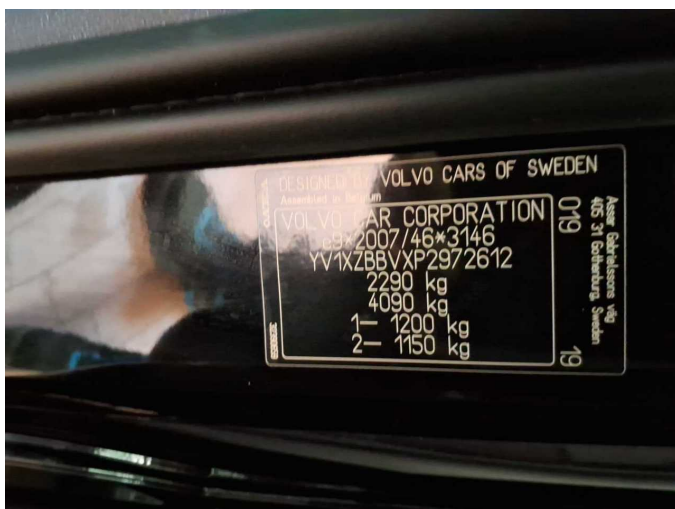


Figure 11: VIN



Figure 12: Mounted tyres



Figure 13: Documents

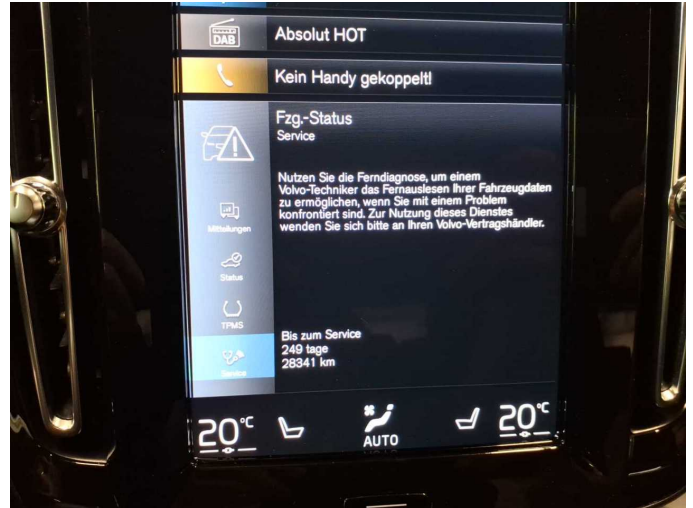


Figure 14: Documents



Figure 15: Documents



Figure 16: Additional tyres

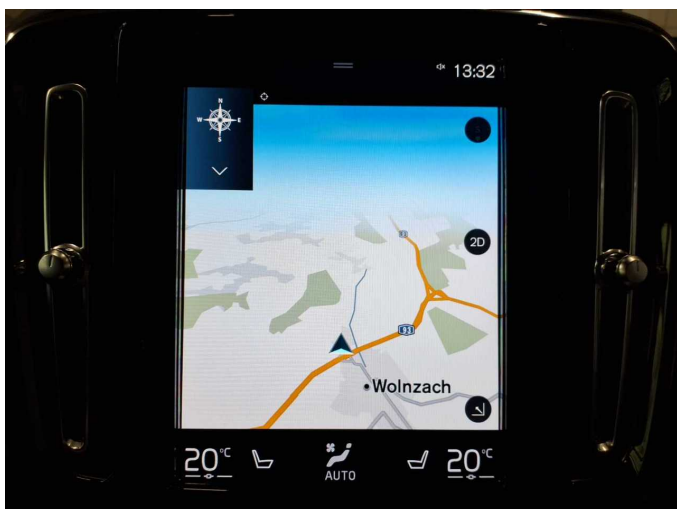


Figure 17: Navigation

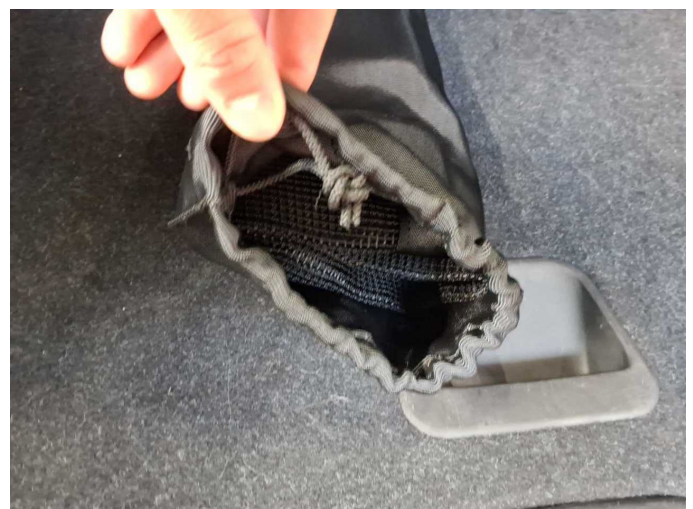


Figure 18: Misc.



Figure 19: Misc.



Figure 20: Misc.



Figure 21: Misc.



Figure 22: Misc.



Figure 23: Misc.



Figure 24: Misc.



Figure 25: Misc.



Figure 26: Misc.



Figure 27: Misc.



Figure 28: Misc.

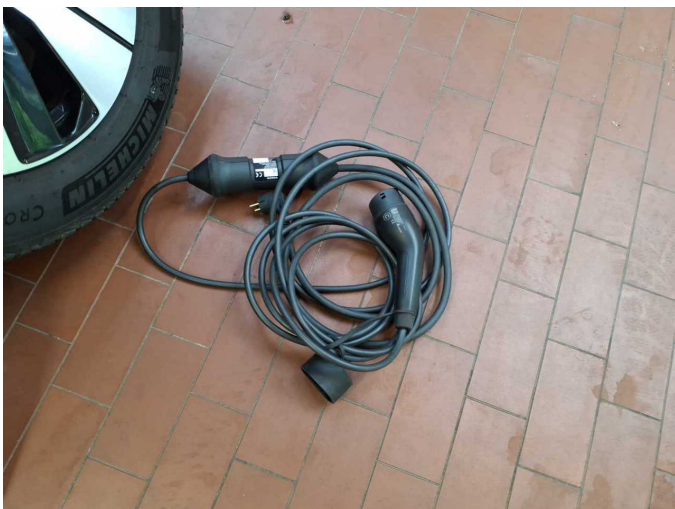


Figure 29: Misc.



Figure 30: Misc.



Figure 31: Misc.



Figure 32: Misc.



Figure 33: Misc.



Figure 34: Misc.



Damage 1: Door - front left side: Door edge - Scratch(es) - Smart repair



Damage 1: Door - front left side: Door edge - Scratch(es) - Smart repair



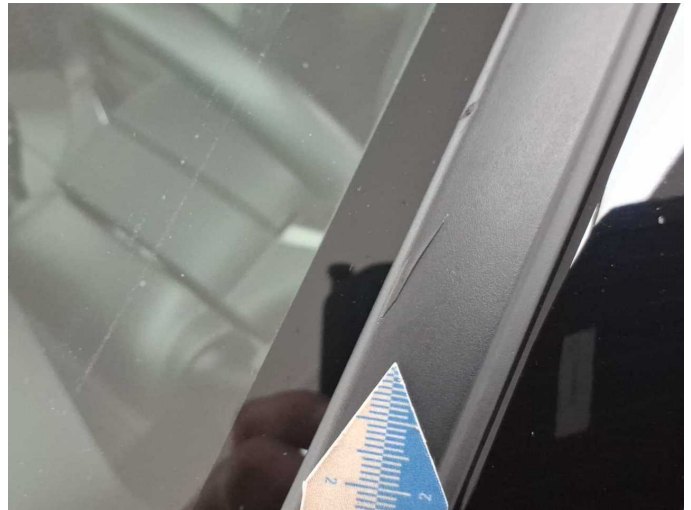
Damage 2: Roof: Cowl - left side - Broken / torn - Replace



Damage 2: Roof: Cowl - left side - Broken / torn - Replace



Damage 2: Roof: Cowl - left side - Broken / torn - Replace



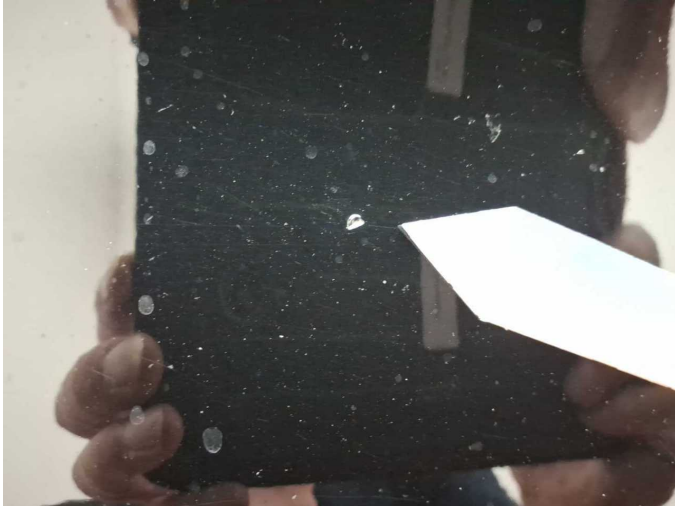
Damage 2: Roof: Cowl - left side - Broken / torn - Replace



Damage 3: Front bumper: Front bumper - Scratch(es) - Smart repair



Damage 3: Front bumper: Front bumper - Scratch(es) - Smart repair



Damage 3: Front bumper: Front bumper - Scratch(es) - Smart repair



Damage 4: 2nd wheel set: 2 tyres (Sommerreifen) - Worn - Replace



Damage 4: 2nd wheel set: 2 tyres (Sommerreifen) - Worn - Replace



Damage 4: 2nd wheel set: 2 tyres (Sommerreifen) - Worn - Replace



Damage 4: 2nd wheel set: 2 tyres (Sommerreifen) - Worn - Replace



Damage 4: 2nd wheel set: 2 tyres (Sommerreifen) - Worn - Replace



Damage 4: 2nd wheel set: 2 tyres (Sommerreifen) - Worn - Replace



Damage 5: Rear bumper: Rear bumper - Scratched - Paint



Damage 5: Rear bumper: Rear bumper - Scratched - Paint



Damage 6: Door - front right side: Door - Scratch(es) - Paint



Damage 6: Door - front right side: Door - Scratch(es) - Paint



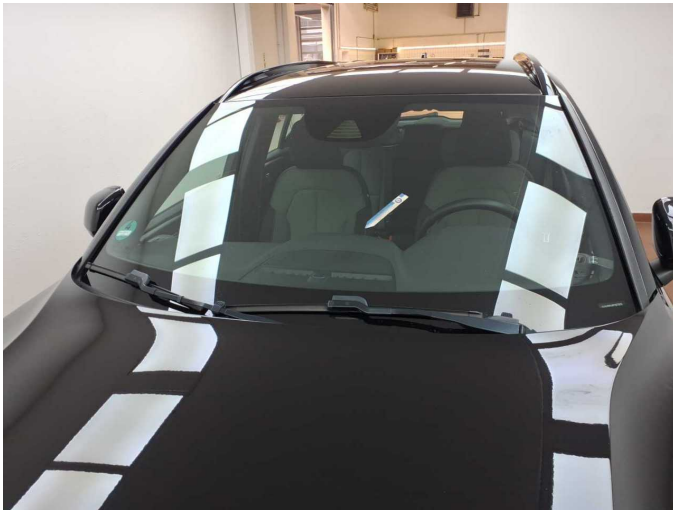
Wear and tear 1: Bonnet: Bonnet - Stone chips - No deduction



Wear and tear 1: Bonnet: Bonnet - Stone chips - No deduction



Wear and tear 1: Bonnet: Bonnet - Stone chips - No deduction



Wear and tear 2: Vehicle glazing: Windscreen - Stone chips - No deduction



Wear and tear 2: Vehicle glazing: Windscreen - Stone chips - No deduction



Wear and tear 3: Tail light: Tail lamp - right side - Scratch(es) - No deduction



Wear and tear 3: Tail light: Tail lamp - right side - Scratch(es) - No deduction



Wartungshistorie

(gemäß Auftraggeber Informationen)

Fahrgestellnummer: YV1XZBBVXP2972612

Hersteller / Modell: VOLVO VOLVO XC40 T5 Recharge DKG Plus Dark

Datum	KM-Stand	Beschreibung
24.02.2026	40.610	AU; Luftfiltereinsatz ern; Motoröl b. Wartung; Ölfilter ern; Regelwartungsdienst; Reparatur Sonstiges; Wartung Sonstiges
18.02.2025	29.413	Bremsflüssigkeit; Bremsflüssigkeit ern; Motoröl b. Wartung; Ölfilter ern; Regelwartungsdienst; Wartung Sonstiges
18.01.2024	15.623	Motoröl b. Wartung; Ölfilter ern; Regelwartungsdienst; Wartung Sonstiges