

Expertise

Protocol number: 46121763
Order No. / Reference: 26430610
Inspection date: 24 Jun 2026

Manufacturer: Mercedes-Benz

Model: C 200 4Matic 9G-TRONIC Avantgarde

VIN: W1KAF4DB2PR088034



Vehicle details

Manufacturer / Type / Model / Equipment

Mercedes-Benz C 200 4Matic 9G-TRONIC Avantgarde

Vehicle Identification number W1KAF4DB2PR088034

Mileage (Read) 81,786 km

First registration 2 Mar 2023

Number of holders 1

Power / Engine displacement 150 kw / 1,496 ccm

Fuel type / Cylinder Hybrid Petrol / E / 4

Gearbox / Number of gears Automatic / 9

Type of drive All-wheel drive

Type of vehicle Saloon car

Colour / colour code MANUFAKTUR
selenitgrau magno

Doors / Seats 4 / 5

Upholstery type Artificial leather

Colour of upholstery Black



Vehicle details

Maintenance booklet / proof	digital proof / complete	Next maintenance in	204 Tag(e)
Last service on / at	11/2025 at 70,351 km		
Key is / should be	2 / 2	FZG documents	ZB#2 (B) was available (copy), ZB#1 (S) was not available.
		Letter No.	GN001517
Previous damage / Accident	None detectable	Repainting	None detectable
Inspection conditions	sufficient	Lifting equipment / pit	No
Test drive	Not performed	Engine function test	Performed
Manufacturer key number/ type code number	2222 / AYE 00097		
Emission standard	EURO6;WLTP;AP;PI/CI; M, N1 I	fine dust sticker	
Permitted total weight	2,320 kg	Empty weight	

Tyres

Mounted tyres

#	Tyre size	Type of tyre	Manufacturer	Tread depth
1)	225/45 R18 95Y	Summer tyres on Light alloy	Pirelli	6mm / 6mm
2)	245/40 R18 97Y	Summer tyres on Light alloy	Pirelli	6mm / 6mm

Additional tyres

#	Tyre size	Type of tyre	Manufacturer	Tread depth
1)	225/50 R17 98H	Winter tyres on Light alloy	Pirelli	6mm / 6mm
2)	225/50 R17 98H	Winter tyres on Light alloy	Pirelli	6mm / 6mm

Legend: Tread depth information for the left tire is listed first, for the right tire it is listed second on the axle in the direction of travel.



Equipment

Standard equipment

- Airbag for driver and front passenger
 - Airbag: Center airbag
 - Airbag: Windowbag for driver and front passenger
 - Ambient lighting with 64 light colors
 - Basic services
 - Brake assist, active
 - DYNAMIC SELECT
 - Electronic Stability Program (ESP)
 - Velour floor mats
 - Transmission: 9-speed automatic, 9G-TRONIC
 - Interior headliner fabric crystal grey
 - Lower section of the instrument panel in black or macchiato beige with contrasting decorative stitching
 - Mechanical child safety lock for the rear doors
 - Rear headrests (3)
 - LED High Performance Headlights
 - Mercedes-Benz emergency call system
 - Center console in high-gloss black
 - Package: Storage
 - Package: Interior lighting package
 - Radio: MBUX
 - Radio accessories: Communication module (LTE) for using Mercedes me connect services
 - Remote Services Plus
 - Seats: Rear seat backrests foldable
 - Cruise control
 - Electronic immobilizer
 - Decorative elements in diamond pattern, silver-grey
- Airbag: Automatic passenger airbag deactivation
 - Airbag: Side airbag for driver and front passenger
 - 4MATIC all-wheel drive
 - Left and right exterior mirrors are heated and electrically adjustable
 - Double cup holder at the front
 - ECO start/stop function
 - Electric windows (4-way)
 - Speed Limit Assistant
 - Rear bumper in body color
 - Instrument panel upper section in black
 - ISOFIX child seat attachment with top tether in the rear
 - KEYLESS-GO start function
 - THERMATIC automatic climate control with 1 climate zone
 - Front headrests
 - Steering wheel: Multifunction sports steering wheel in leather
 - Otto particulate filter
 - Package: AVANTGARDE Exterior
 - Radio: Extended MBUX functions
 - Radio accessories: Digital radio (DAB)
 - Radio accessories: Central display
 - Tire pressure monitoring system (TPMS)
 - Windscreen wipers with rain sensor
 - Lane Keeping Assist, active
 - High-visibility vest for drivers
 - Central locking with remote control



Extra equipment

- Ambient lighting with 64 light colors (with directly illuminated light lines.)
- Decorative element, wood, ash, brown, glossy
- Fuel tank with larger capacity
- Heat-insulating dark tinted glass
- Package: Advanced Infotainment Package (MBUX Navigation Premium (hard drive navigation, pre-installation for Live Traffic Information), Traffic Sign Assist, Smartphone Integration (connects the mobile phone wirelessly to the multimedia system via Apple CarPlay and Android Auto), Wireless charging system for mobile devices in the front, Driver display - 31.2 cm (12.3") color LCD display, Central display - 30.2 cm (11.9") touch display with LCD technology)
- Package: Advanced Parking Package (12 ultrasonic sensors - 360° camera - Active Parking Assist with PARKTRONIC: detects free parking spaces, assisted parking, visual and acoustic warning, display of camera and ultrasonic data in the media display - Cross traffic warning: can provide visual and acoustic warnings when reversing out of a parking space and, if necessary, automatically initiate emergency braking - Reverse maneuvering brake: can trigger a braking process - Drive-away assist)
- Package: Night (with Avantgarde exterior) (Radiator grille: louvers in high-gloss black and trim in glossy chrome (17") 5-spoke design light-alloy wheels, black painted and diamond-turned, with 225/50 R17 tires on 7Jx17 ET44, 5 front apron with trim (wing) in high-gloss black rear bumper with trim (wing) in high-gloss black beltline trim and window surrounds in high-gloss black exterior mirror housings painted in high-gloss black heat-insulating dark tinted glass in the rear (from the B-pillar))
- Paintwork: MANUFAKTUR Magno
- Radio accessories: Advanced sound system (with 9 speakers and 225 watts system power)
- Type designation removed from trunk lid
- Upholstery: ARTICO man-made leather
- Wheels: 45.7 cm (18") light alloy wheels in 5-twin-spoke design (black painted and polished with front axle 225/45 R 18 on 7.5 J x 18 ET 40, rear axle 245/40 R 18 on 8.5 J x 18 ET 52)
- Wheels: Complete winter wheel sets fitted at the factory
- Wheels: Winter complete set of M+S wheels, 4-way 43.2 cm (17") light alloy wheels with 10-twin-spoke design (vanadium silver painted with 225/50 R 17 on 7 J x 17 ET 44, 5.)
- Package: Advanced Comfort Package (Heated seats for driver and front passenger - Seat Comfort Package: - Numerous electric and manual adjustment options for the front seats to adapt to the specific body and comfort requirements of the driver and front passenger - Electro-pneumatic 4-way lumbar support and lateral support adjustment with control element on the seat - Electric seat cushion tilt adjustment - Electric height adjustment - Electric backrest adjustment - Electric seat cushion depth adjustment - Mechanical longitudinal adjustment - Mechanical headrest adjustment)
- Package: Assistance (Blind Spot Assist: The system can warn you of side collisions with other road users in your blind spot, especially as soon as you activate the turn signal. Even after driving, the system remains vigilant and warns you if you open the door at the wrong moment. An important safety feature – especially for cyclists.)
- Package: Mirror package (both exterior mirrors electrically folding (button in the driver's door control panel) - interior mirror and exterior mirror on the driver's side automatically dimming continuously - ambient lighting of the exterior mirror to illuminate the entry area with projection of the Mercedes-Benz logo)
- Radio accessories: MBUX Entertainment (Integration of music streaming services (user account required): Spotify, Amazon Music, Apple Music, TIDAL, TuneIn (no user account required) - Extended radio information - Extended radio station tracking - Internet radio - Third-party convenience data volume)
- Sunroof: Electric panoramic sunroof
- Telephone accessories: Wireless charging system for mobile devices (wireless charging according to Qi standard for compatible mobile phones - fast connection setup between multimedia system and mobile phone via Near Field Communication (NFC) for identification of the mobile device - storage compartment for wireless charging is located in the storage compartment at the front of the center console)
- THERMATIC automatic climate control with 2 climate zones (control via the central display or the climate control unit in the center console; sensor system for detecting, for example, indoor/outdoor temperature, sunlight, humidity, and dew point; automatic recirculation (only in conjunction with navigation system); ventilation system consisting of: 3 center vents and 2 side vents; fine dust activated carbon filter for filtering dust, soot, and pollen; dew point sensor; residual heat function for efficient use of engine waste heat)



Brief expert findings

Documents submitted	At the time of the inspection, the vehicle registration certificate Part 2 (title) was available, but the vehicle registration certificate Part 1 (document) was not. (Copy)
VIN comparison	The vehicle identification number (VIN) was read from the vehicle and its conformity with the submitted documents was confirmed by the undersigned during the inspection.
Inspection	The inspection conditions were sufficient for the assessment of the vehicle. No lifting equipment or pit was available for inspecting the vehicle. Therefore, inspection of the vehicle's underside was only possible to a limited extent.
Test drive	No test drive/shunting maneuver was carried out during the inspection of the vehicle.
Engine function test	An engine test run was performed.

Value reducing factors

No.	Component group	Description
1	Wheel / tyres	Alloy rim - front right side - Scratched - Replace
2	Vehicle glazing	Windscreen with lane departure assistant - Broken / torn - Replace

Wear and tear

No.	Component group	Description
1	Front bumper	Front bumper - Stone chips - No deduction

The vehicle shows signs of wear and tear commensurate with its age and use.

Order/Scope of Order

An order was placed to prepare a sales report for the described vehicle. This report includes the following:

- Description of key vehicle information
- Documentation of equipment features
(*Delivery by third-party service providers*)
- Documentation of damage, defects, missing parts
- Documentation of prior damage, unrepaired prior damage, repainting
- A brief visual or functional inspection of the equipment details, if possible.
(*Functional testing of driver assistance systems is not included in the scope of services!*)
- a photographic documentation of the vehicle

Basis for the order

This product is based on the guidelines for vehicle returns and valuations published by Alphabet Fleet GmbH. The expert makes the specific findings in each individual case objectively, within the framework of the prescribed standards, based on their own expertise.

The vehicle inspection takes place in a fully assembled, unassembled state.

Damage or defects that can only be detected during disassembly/diagnostic work or through further investigation remain within the realm of prognostic risk. An increased risk exists due to concealed defects caused by fraudulent misrepresentation and which were not identifiable by the expert.

Damage or defects resulting from normal use or wear and tear of the vehicle will be accepted in accordance with the applicable standard.

There was no explicit identification or monetary consideration of the expected features within the product.

Features which, in their nature and extent, slightly exceed normal use but do not constitute unacceptable damage, will be documented and indicated as signs of wear, if applicable.

Damage or defects that, according to the applicable standard, can no longer be attributed to normal use or wear and tear are listed under "Value Reducing Factors" in the product description.

Depending on the product specification, a monetary ID can be provided. If this takes place, the costs can be 100% d or pro rata depending on the vehicle's age and mileage.



Previous damages

No apparent prior damage that had been repaired could be found on the vehicle.

Comments

- Die Unterbodenbesichtigung war nur ebenerdig & eingeschränkt möglich. Mehrkosten möglich.



Figure 1: Diagonal front (left)



Figure 2: Diagonal front (right)



Figure 3: Diagonal rear (left)



Figure 4: Diagonal rear (right)



Figure 5: Interior - front



Figure 6: Interior - rear



Figure 7: Instrument cluster



Figure 8: Instrument panel



Figure 9: Interior 360° view



Figure 10: Cargo area



Figure 11: VIN



Figure 12: Mounted tyres

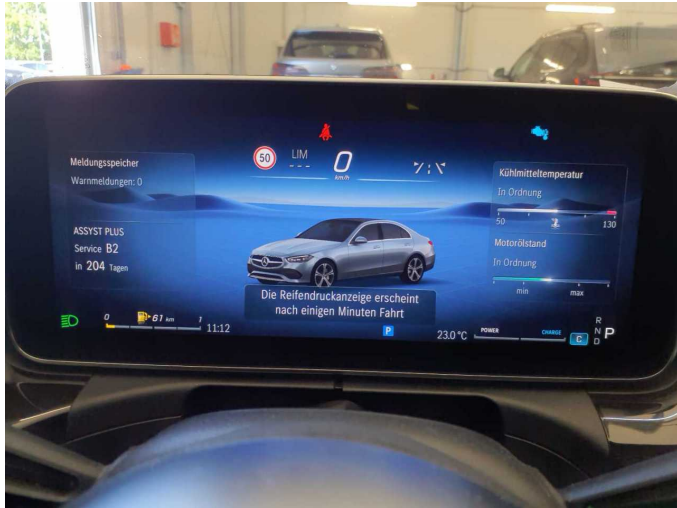


Figure 13: Documents



Figure 14: Documents



Figure 15: Additional tyres

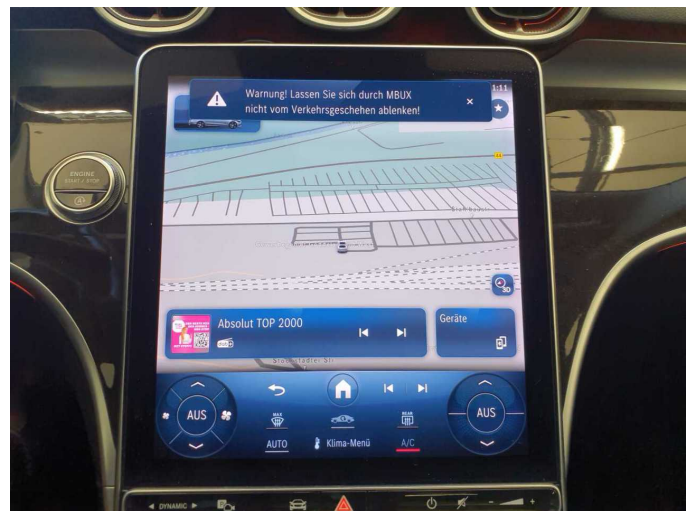


Figure 16: Navigation



Figure 17: Misc.

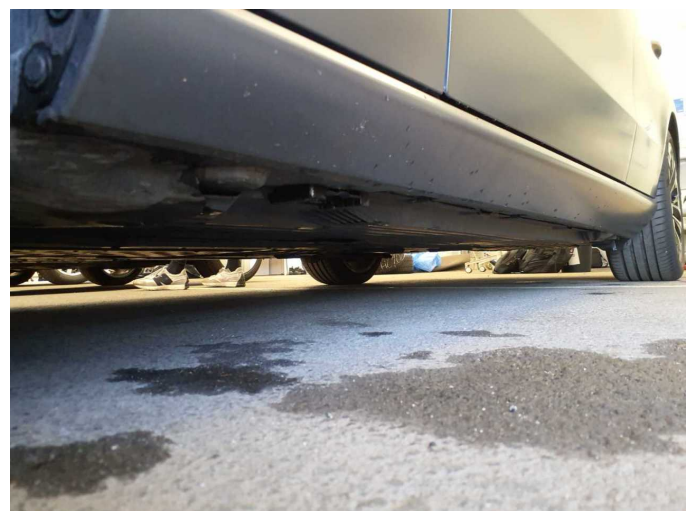


Figure 18: Misc.



Figure 19: Misc.



Figure 20: Misc.

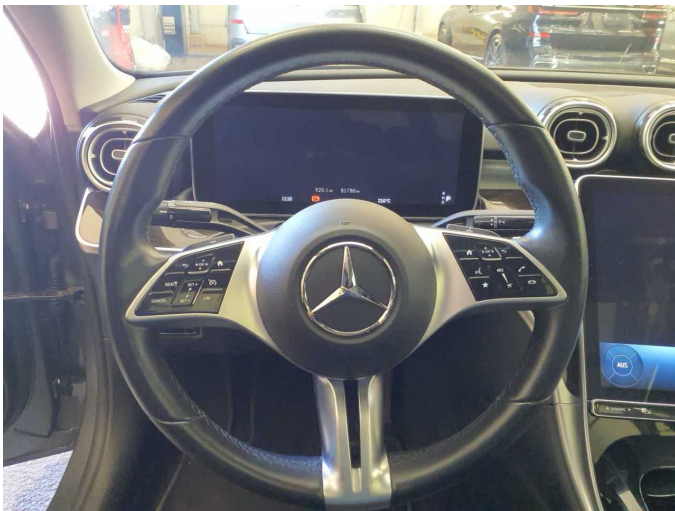


Figure 21: Misc.



Figure 22: Misc.

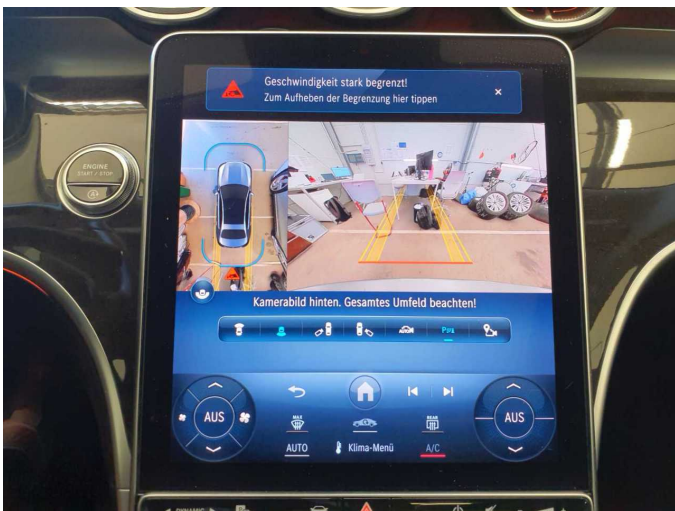


Figure 23: Misc.

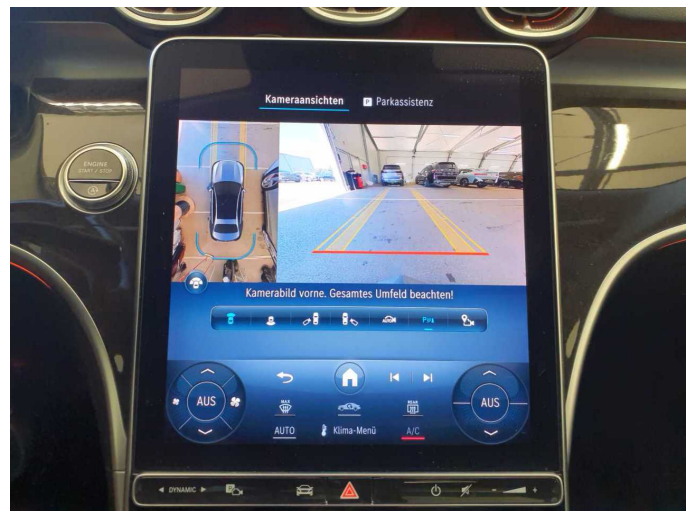


Figure 24: Misc.

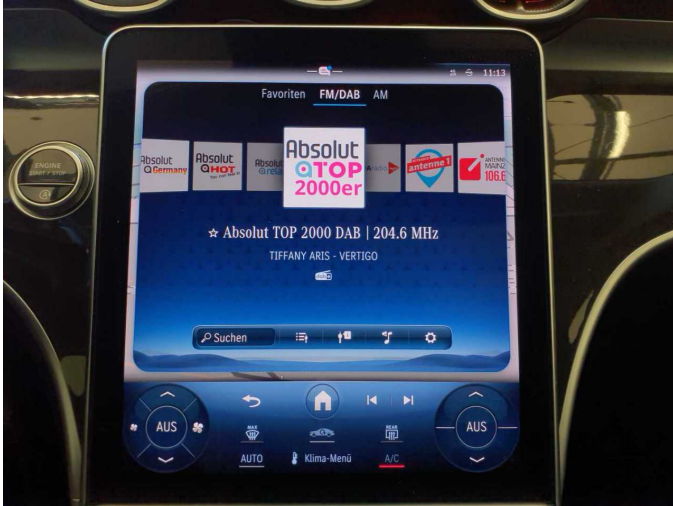


Figure 25: Misc.



Figure 26: Misc.



Figure 27: Misc.



Figure 28: Misc.



Figure 29: Misc.

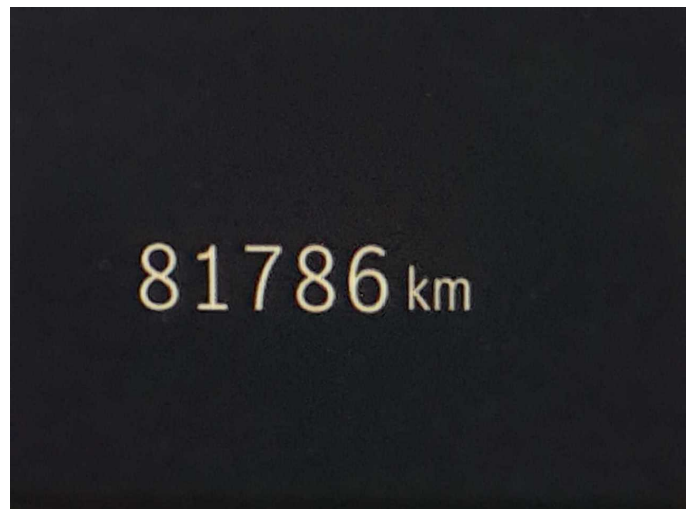


Figure 30: Misc.



Damage 1: Wheel / tyres: Alloy rim - front right side - Scratched - Replace



Damage 1: Wheel / tyres: Alloy rim - front right side - Scratched - Replace



Damage 2: Vehicle glazing: Windscreen with lane departure assistant - Broken / torn - Replace



Damage 2: Vehicle glazing: Windscreen with lane departure assistant - Broken / torn - Replace



Damage 2: Vehicle glazing: Windscreen with lane departure assistant - Broken / torn - Replace



Wartungshistorie

(gemäß Auftraggeber Informationen)

Fahrgestellnummer: W1KAF4DB2PR088034

Hersteller / Modell: MERCEDES-BENZ MERCEDES-BENZ C 200 4Matic 9G-TRONIC
Avantgarde

Datum	KM-Stand	Beschreibung
21.11.2025	70.351	Regelwartungsdienst
15.01.2025	46.841	Regelwartungsdienst
11.01.2024	25.543	Regelwartungsdienst