

Expertise

Protocol number: 45902489
Order No. / Reference: 26410512
Inspection date: 10 Jun 2026

Manufacturer: Skoda

Model: Octavia Combi 2.0 TDI Ambition

VIN: TMBJG8NX3PY074173



Vehicle details

Manufacturer / Type / Model / Equipment

Skoda Octavia Combi 2.0 TDI Ambition

Vehicle Identification number TMBJG8NX3PY074173

Mileage (Read) 64,603 km

First registration 6 Feb 2023

Number of holders 2

Power / Engine displacement 85 kw / 1,968 ccm

Fuel type / Cylinder Diesel / 4

Gearbox / Number of gears Automatic / 7

Type of drive Front drive

Type of vehicle Station wagon

Colour / colour code Graphite Grau Metallic

Doors / Seats 5 / 5

Upholstery type Cloth

Colour of upholstery Anthracite-Black



Vehicle details			
Maintenance booklet / proof	digital evidence / incomplete	Next maintenance in	7,400 km
Last service on / at	01/2025 at 41,943 km		
Key is / should be	2 / 2	FZG documents	ZB#2 (B) was available (copy), ZB#1 (S) was not available.
		Letter No.	GN459824
Previous damage / Accident	None detectable	Repainting	None detectable
Inspection conditions	sufficient	Lifting equipment / pit	No
Test drive	Not performed	Engine function test	Performed
Manufacturer key number/ type code number	8004 / AWK 00540		
Emission standard	EURO6;WLTP;AP;PI/CI; M, N1 I	fine dust sticker	
Permitted total weight	1,960 kg	Empty weight	

Tyres

Mounted tyres				
#	Tyre size	Type of tyre	Manufacturer	Tread depth
1)	205/60 R16 96H	Winter tyres on Steel	Goodyear	6mm / 6mm
2)	205/60 R16 96H	Winter tyres on Steel	Goodyear	8mm / 8mm
Additional tyres				
#	Tyre size	Type of tyre	Manufacturer	Tread depth
1)	205/60 R16 92V	Summer tyres on Light alloy	Hankook	5mm / 5mm
2)	205/60 R16 92V	Summer tyres on Light alloy	Hankook	6mm / 6mm
Replacement				
Typ	Tyre size	Type of tyre	Manufacturer	Tread depth
	Tirefit	Expiration date 10/2026		

Legend: Tread depth information for the left tire is listed first, for the right tire it is listed second on the axle in the direction of travel.

TÜV SÜD Auto Partner GmbH
Wiesenring 2
04159 Leipzig

Inspection location
Hartmann Fleet Professionals GmbH
Leerenstraße 25
29683 Bad Fallingbommel



Equipment



Standard equipment

- Storage compartment in the luggage compartment with cargo element
- Airbag for driver and front passenger (passenger airbag can be deactivated)
- Airbag, driver's knee airbag
- Airbag, front side airbags
- Anti-lock braking system (ABS)
- Electrically adjustable and heated exterior mirrors
- Heated windshield washer nozzles including 5l washer fluid reservoir
- Glasses compartment in the headliner
- AERO roof rails in black
- Diesel particulate filter
- Third brake light
- Electronic transverse differential lock (XDS+)
- Electric windows front and rear, including anti-pinch protection and child safety lock
- Cruise control system
- Tinted windows
- Heated rear window
- Rear window wiper including windshield washer system
- ISOFIX preparations on the front passenger seat and the outer rear seats including top tether anchorage
- Removable boot cover
- Headrests (5) front and rear height adjustable
- Paint finish: Solid
- LED taillights
- LED headlights with LED daytime running lights
- Steering wheel: Leather steering wheel with multifunction buttons (leather steering wheel and gearshift lever with leather elements - infotainment and driver assistance system operation)
- Multifunction display in the instrument cluster
- Rear parking sensors
- Radio: Bolero music system with 10" display
- Radio accessories: 8 speakers
- Radio accessories: Digital radio reception DAB+
- Radio accessories: Voice control
- Rain sensor and driving light assistant ((Easy Light Assist) (Tunnel light, Coming Home, Leaving Home))
- Wheels: 16" alloy wheels Twister AERO (7J x 16, ET 46 with tires 205/60 R16)
- Seats: Height-adjustable driver and passenger seats (including lumbar support)
- Speed limiter
- Lane keeping assistant (Lane Assist)
- 12V socket in the trunk
- Phone: Wireless SmartLink for Apple CarPlay
- Lashing eyes in the trunk
- Immobiliser
- Central locking including remote control integrated into the key and EASY Start
- Storage compartments (storage compartments in the front door panels with 1.5l bottle holders, storage compartments in the rear door panels with 0.5l bottle holders, storage compartments in the doors with felt lining)
- Airbag, head airbags
- Airbag: Center airbag front
- Traction control (ASR)
- Electrically folding exterior mirrors
- Hill start assist
- Hydraulic brake assist (HBA)
- Grey headliner
- Decorative strip in Goldress matte
- Tachometer
- Electronic parking brake including auto-hold function
- Electronic Stability Control (ESC)
- Front radar assistant including city emergency braking function and pedestrian and cyclist detection
- Transmission: 6-speed manual transmission
- Green tec: Start/stop system including brake energy recuperation
- Interior mirror automatically dimming
- Child safety lock for the rear doors and windows
- Climatronic air conditioning (2-zone) (fully automatic, separately adjustable for driver and front passenger, and with anti-allergen filter & activated carbon filter)
- LED fog lights
- LED license plate lights
- Steering wheel: height and reach adjustable
- Manual headlight range adjustment
- Rear center armrest with pass-through option
- Front center armrest, including storage compartment
- Engine drag torque control (MSR)
- Fatigue detection
- Upholstery: Cloth
- Radio accessories: 2 USB-C ports on the front
- Radio accessories: Bluetooth hands-free system
- Radio accessories: SmartLink (Apple CarPlay - Android Auto)
- Tire pressure monitoring
- Tire mobility kit (tire repair spray incl. compressor)
- Electromechanical power steering
- Seat belts (Three three-point seat belts in the rear)
- Seats: Rear seat backrest split 60:40, foldable
- SKODA Care Connect (SOS emergency call function (eCall+ including automatic activation in the event of an accident with airbag deployment) - Mobility service (connection option for rapid assistance in case of breakdown) - Information service (connection option to the hotline for all questions relating to vehicle functions) - Free remote vehicle access for 1 year (Remote Access) with access to vehicle data and functions via smartphone, e.g. parking position, activating hazard warning lights, current fuel level)



Extra equipment

- Package: Infotainment package Business Columbus (Columbus navigation system - Bluetooth hands-free system - Infotainment Online (3-year term), online map updates: for navigation, traffic situation, petrol stations and parking space search - Digital Cockpit Plus - 3 USB charging ports - Driving profile selection - Adaptive Cruise Control (ACC) - Phonebox with inductive charging function - Traveller assistance system (Travel Assist): - Traffic sign recognition - Adaptive lane keeping assist - Capacitate steering wheel with hands-off detection)
- Front and rear parking sensors
- Heated windscreen
- High beam assist
- Luggage net partition
- Paint finish: Metallic
- Rear view camera
- Steering wheel: Heated steering wheel including heated front seats

Brief expert findings

Documents submitted	At the time of the inspection, the vehicle registration certificate Part 2 (title) was available, but the vehicle registration certificate Part 1 (document) was not. (Copy)
VIN comparison	The vehicle identification number (VIN) was read from the vehicle and its conformity with the submitted documents was confirmed by the undersigned during the inspection.
Inspection	The inspection conditions were sufficient for the assessment of the vehicle. No lifting equipment or pit was available for inspecting the vehicle. Therefore, inspection of the vehicle's underside was only possible to a limited extent.
Test drive	No test drive/shunting maneuver was carried out during the inspection of the vehicle.
Engine function test	An engine test run was performed.

Value reducing factors

No.	Component group	Description
1	Misc.	Inspection / maintenance (Verspätet Durchgeführt) - No deduction
2	Documents	Service book (60000km Nachweis fehlt) - Incomplete - No deduction
3	Trim / covers	Floor mats - Broken / torn - Replace
4	Door - front left side	Door edge - Scratch(es) - Smart repair
5	Mudguard - left side	Mudguard - left side - Scratch(es) - Smart repair
6	Side panel - rear right side	Side panel - Dent / paintcoat damage - Smart repair
7	Rear bumper	Rear bumper - Scratch(es) - Smart repair
8	Door - rear right side	Door - dent(s) - Repair and paint
9	Bonnet	Bonnet - Stone chips - Paint

Wear and tear

No.	Component group	Description
1	Vehicle glazing	Windscreen - Stone chips - No deduction
2	Front bumper	Front bumper - Stone chips - No deduction

The vehicle shows signs of wear and tear commensurate with its age and use.



Order/Scope of Order

An order was placed to prepare a sales report for the described vehicle. This report includes the following:

- Description of key vehicle information
- Documentation of equipment features
(Delivery by third-party service providers)
- Documentation of damage, defects, missing parts
- Documentation of prior damage, unrepaired prior damage, repainting
- A brief visual or functional inspection of the equipment details, if possible.
(Functional testing of driver assistance systems is not included in the scope of services!)
- a photographic documentation of the vehicle

Basis for the order

This product is based on the guidelines for vehicle returns and valuations published by Alphabet Fleet GmbH. The expert makes the specific findings in each individual case objectively, within the framework of the prescribed standards, based on their own expertise.

The vehicle inspection takes place in a fully assembled, unassembled state.

Damage or defects that can only be detected during disassembly/diagnostic work or through further investigation remain within the realm of prognostic risk. An increased risk exists due to concealed defects caused by fraudulent misrepresentation and which were not identifiable by the expert.

Damage or defects resulting from normal use or wear and tear of the vehicle will be accepted in accordance with the applicable standard.

There was no explicit identification or monetary consideration of the expected features within the product.

Features which, in their nature and extent, slightly exceed normal use but do not constitute unacceptable damage, will be documented and indicated as signs of wear, if applicable.

Damage or defects that, according to the applicable standard, can no longer be attributed to normal use or wear and tear are listed under "Value Reducing Factors" in the product description.

Depending on the product specification, a monetary ID can be provided. If this takes place, the costs can be 100% or pro rata depending on the vehicle's age and mileage.

Previous damages

No apparent prior damage that had been repaired could be found on the vehicle.

Comments

-Der montierte Winterradsatz ist kein Bestandteil des Auslieferungsumfangs.



Figure 1: Diagonal front (left)



Figure 2: Diagonal front (right)



Figure 3: Diagonal rear (left)



Figure 4: Diagonal rear (right)



Figure 5: Interior - front



Figure 6: Interior - rear



Figure 7: Instrument cluster



Figure 8: Instrument panel



Figure 9: Interior 360° view



Figure 10: Cargo area



Figure 11: VIN



Figure 12: Mounted tyres



Figure 13: Documents



Figure 14: Additional tyres



Figure 15: Additional tyres



Figure 16: Navigation



Figure 17: Misc.



Figure 18: Misc.



Figure 19: Misc.



Figure 20: Misc.



Figure 21: Misc.



Figure 22: Misc.



Figure 23: Misc.

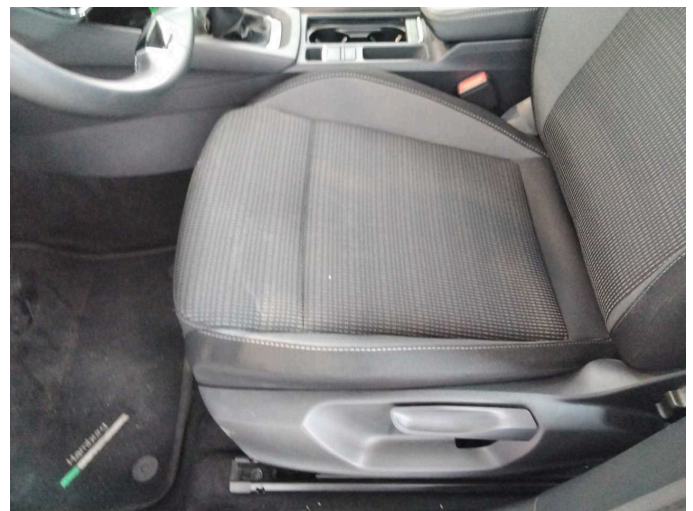


Figure 24: Misc.



Figure 25: Misc.



Figure 26: Misc.



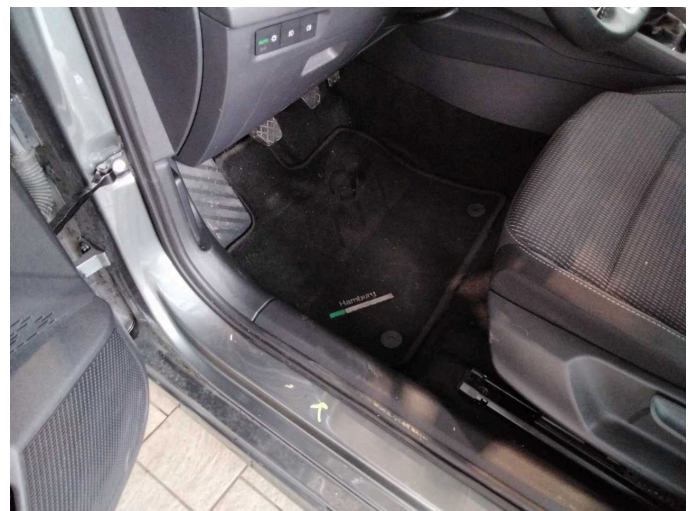
Figure 27: Misc.



Figure 28: Misc.



Figure 29: Misc.



Damage 3: Trim / covers: Floor mats - Broken / torn - Replace



Damage 3: Trim / covers: Floor mats - Broken / torn - Replace



Damage 4: Door - front left side: Door edge - Scratch(es) - Smart repair



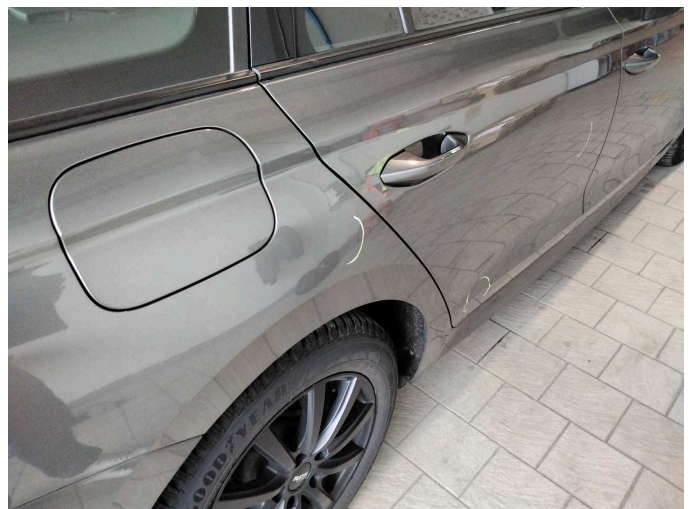
Damage 4: Door - front left side: Door edge - Scratch(es) - Smart repair



Damage 5: Mudguard - left side: Mudguard - left side - Scratch(es) - Smart repair



Damage 5: Mudguard - left side: Mudguard - left side - Scratch(es) - Smart repair



Damage 6: Side panel - rear right side: Side panel - Dent / paintcoat damage - Smart repair



Damage 6: Side panel - rear right side: Side panel - Dent / paintcoat damage - Smart repair



Damage 6: Side panel - rear right side: Side panel - Dent / paintcoat damage - Smart repair



Damage 7: Rear bumper: Rear bumper - Scratch(es) - Smart repair



Damage 7: Rear bumper: Rear bumper - Scratch(es) - Smart repair



Damage 7: Rear bumper: Rear bumper - Scratch(es) - Smart repair



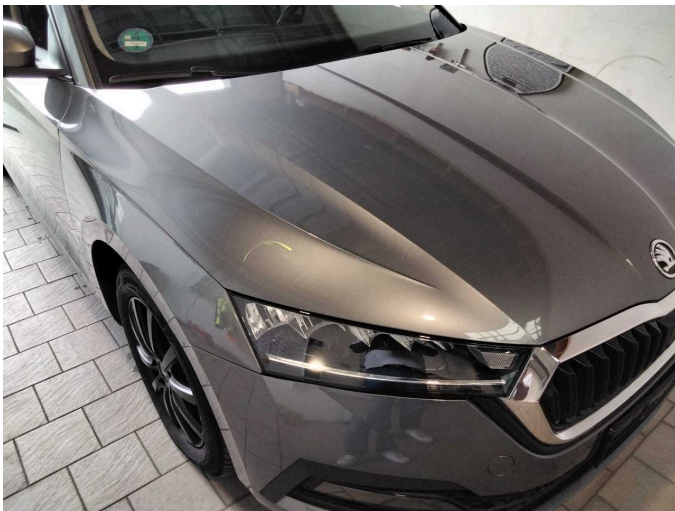
Damage 8: Door - rear right side: Door - dent(s) - Repair and paint



Damage 8: Door - rear right side: Door - dent(s) - Repair and paint



Damage 8: Door - rear right side: Door - dent(s) - Repair and paint



Damage 9: Bonnet: Bonnet - Stone chips - Paint



Damage 9: Bonnet: Bonnet - Stone chips - Paint



Damage 9: Bonnet: Bonnet - Stone chips - Paint



Wear and tear 1: Vehicle glazing: Windscreen - Stone chips - No deduction



Wear and tear 2: Front bumper: Front bumper - Stone chips - No deduction