

Expertise

Protocol number: 46121513
Order No. / Reference: 26512708
Inspection date: 24 Jun 2026

Manufacturer: Peugeot

Model: 508 SW BlueHDi 130 EAT8 GT

VIN: VR3FCYHZTPY502523



Vehicle details

Manufacturer / Type / Model / Equipment

Peugeot 508 SW BlueHDi 130 EAT8 GT

Vehicle Identification number VR3FCYHZTPY502523

Mileage (Read) 64,954 km

First registration 3 May 2023

Number of holders 1

Next periodical technical inspection 05/2028
(Report not on hand)

Power / Engine displacement 96 kw / 1,499 ccm

Fuel type / Cylinder Diesel / 4

Gearbox / Number of gears Automatic / 8

Type of drive Front drive

Type of vehicle Station wagon

Colour / colour code Platinum Grau Metallic

Doors / Seats 5 / 5

Upholstery type Cloth / leather
combination

Colour of upholstery Black-Anthracite



Vehicle details

Maintenance booklet / proof	digital proof / complete	Next maintenance in	10 Monat(e)
Last service on / at	04/2026 at 61,768 km		
Key is / should be	2 / 2	FZG documents	ZB#2 (B) was available (copy), ZB#1 (S) was not available.
		Letter No.	GG052118
Previous damage / Accident	Detectable	Repainting	None detectable
Inspection conditions	sufficient	Lifting equipment / pit	yes
Test drive	Not performed	Engine function test	Performed
Manufacturer key number/ type code number	1889 / AEA 00042		
Emission standard	EURO6;WLTP;AP;PI/CI; M, N1 I	fine dust sticker	
Permitted total weight	2,050 kg	Empty weight	

Tyres

Mounted tyres

#	Tyre size	Type of tyre	Manufacturer	Tread depth
1)	235/40 R19 96Y	Summer tyres on Light alloy	Michelin	4mm / 4mm
2)	235/40 R19 96Y	Summer tyres on Light alloy	Michelin	4mm / 4mm

Additional tyres

#	Tyre size	Type of tyre	Manufacturer	Tread depth
1)	215/55 R17 98H	Winter tyres on Light alloy	Pirelli	5mm / 5mm
2)	215/55 R17 98H	Winter tyres on Light alloy	Pirelli	5mm / 5mm

Replacement

Typ	Tyre size	Type of tyre	Manufacturer	Tread depth
	Tirefit	Expiration date 05/2028		

Legend: Tread depth information for the left tire is listed first, for the right tire it is listed second on the axle in the direction of travel.

TÜV SÜD Auto Partner GmbH
Wiesenring 2
04159 Leipzig

Inspection location
Hartmann Compound Professionals
Arnoldschacht 9-11
44894 Bochum



Equipment



Standard equipment

- ABS (Anti-lock Braking System)
- Airbag for driver and front passenger
- Airbag: Curtain airbags front and rear
- Adaptive Cruise Control (ACC) with Stop & Go function
- Electrically adjustable, heated and folding exterior mirrors
- Illuminated glove compartment
- Turn signals with lane change indicator function
- third brake light
- Roof rails in high-gloss black
- Digital instrument cluster with high-resolution 12.3" screen, adjustable and customizable
- Front parking aid, acoustic and visual
- Driving mode selector (Sport - Normal - Eco)
- Electric windows front and rear
- electric parking brake
- Front collision warning
- Guide rails in the trunk
- Cruise control system with speed limiter
- Cup holder in the center console
- GT logo on the C-pillar and on the tailgate
- Heated rear window
- rear window wiper
- Rear apron with diffuser look in black
- Frameless interior mirror
- Keyless system
- Automatic climate control (2-zone)
- LED ambient lighting in the front footwell
- Blue LED ambient lighting on the front door panels
- LED ceiling lighting at the front
- LED matrix headlights
- Steering wheel: Small multifunction leather steering wheel, flattened at the top and bottom.
- makeup mirror
- Front center armrests with illuminated storage compartment
- Fatigue warning system with fatigue detection
- Particulate filter: FAP diesel particulate filter
- Peugeot Connect Box
- Upholstery: Alcantara/synthetic leather
- Rain sensor
- Wheels: Anti-theft wheel bolts
- Electric power steering
- Seats: Driver's seat height adjustable
- Seats: Rear bench seat and backrest 40/60 split folding
- Sport mode
- Lane Positioning Assistant
- Stop&Start system
- Chrome-plated decorative exhaust tailpipes
- Traffic sign recognition
- Central locking can be activated from inside using a remote control.
- Active Safety Brake Plus
- Airbag: Side airbag
- Active Blind Spot Assist
- Automatically dimming exterior mirrors
- Exterior mirrors in Perla Nera Black
- Hill start assist
- On-board computer
- Black headliner
- Decorative inlays in carbon look
- EBV (Electronic Brakeforce Distribution)
- Rear parking aid, acoustic and visual
- Electronic Stability Program (ESP)
- Misfueling protection
- High beam assist
- Follow-me-home function (automatic)
- front and rear floor mats
- luggage compartment roller blind
- Transmission: 8-speed automatic transmission EAT8
- GT logo on the fenders and the trunk lid
- Seat belts: 3-point safety belts in all seats
- Rear window and side windows in the second row are more heavily tinted.
- Interior mirror automatically dimming
- Map pockets on the front seatbacks
- Manual child lock
- Height-adjustable headrests
- Blue LED ambient lighting on the dashboard
- LED lighting in the front footwell
- LED taillights with dynamic illumination of the three claws
- LED daytime running lights
- Steering wheel: Paddle shifters on the steering wheel
- light sensor
- Rear center armrest with pass-through flap
- Multifunctional touchscreen with 10-inch HD color display
- Multimedia: Mirror Screen
- Emergency brake assist
- Aluminum pedals and stainless steel door sills
- Peugeot i-Connect Advanced:
- Upholstery: Decorative stitching in Aikini on the dashboard,
- Tire pressure monitoring system
- Wheels: Tire repair kit (compressor + tire sealant spray)
- Seats: Passenger seat height adjustable
- Seats: Electrically adjustable lumbar support
- Seats: Rear seats
- Lane keeping assist with steering intervention
- 12-volt socket
- Technical Plug-In Hybrid Version
- Glazing: Laminated glass windshield, noise-reducing
- Immobiliser
- Decorative trim in high-gloss black on the side windows



Extra equipment

- Tailgate sensor-controlled D501
- "Augusta" 19" alloy wheels, two-tone, including spare wheel well (with tires 235/40 R 19 96Y)
- Reversing camera with 360° surround view
- Paint finish: Metallic
- Panoramic tilt/slide sunroof with electric blind
- Wheels: Spare wheel well (GT)
- Seats: Ergonomic Comfort Seats Plus (GT) WABO

Brief expert findings

Documents submitted	At the time of the inspection, the vehicle registration certificate Part 2 (title) was available, but the vehicle registration certificate Part 1 (document) was not. (Copy)
VIN comparison	The vehicle identification number (VIN) was read from the vehicle and its conformity with the submitted documents was confirmed by the undersigned during the inspection.
Inspection	The inspection conditions were sufficient for the assessment of the vehicle. Lifting equipment and/or a pit were available for examining the vehicle.
Test drive	No test drive/shunting maneuver was carried out during the inspection of the vehicle.
Engine function test	An engine test run was performed.

Value reducing factors

No.	Component group	Description
1	Door - front right side	Door - Scratch(es) - Smart repair

Wear and tear

No.	Component group	Description
1	Bonnet	Bonnet - Stone chips - No deduction
2	Vehicle glazing	Windscreen - Stone chips - No deduction
3	Front bumper	Front bumper - Stone chips - No deduction

The vehicle shows signs of wear and tear commensurate with its age and use.

Previous damages

No.	Previous damage	Extent of damage (Net)
1	Rear, Provided by user / customer	3.479,07 €

Order/Scope of Order

An order was placed to prepare a sales report for the described vehicle. This report includes the following:

- Description of key vehicle information
- Documentation of equipment features
(*Delivery by third-party service providers*)
- Documentation of damage, defects, missing parts
- Documentation of prior damage, unrepaired prior damage, repainting
- A brief visual or functional inspection of the equipment details, if possible.
(*Functional testing of driver assistance systems is not included in the scope of services!*)
- a photographic documentation of the vehicle



Basis for the order

This product is based on the guidelines for vehicle returns and valuations published by Alphabet Fleet GmbH. The expert makes the specific findings in each individual case objectively, within the framework of the prescribed standards, based on their own expertise.

The vehicle inspection takes place in a fully assembled, unassembled state.

Damage or defects that can only be detected during disassembly/diagnostic work or through further investigation remain within the realm of prognostic risk. An increased risk exists due to concealed defects caused by fraudulent misrepresentation and which were not identifiable by the expert.

Damage or defects resulting from normal use or wear and tear of the vehicle will be accepted in accordance with the applicable standard.

There was no explicit identification or monetary consideration of the expected features within the product.

Features which, in their nature and extent, slightly exceed normal use but do not constitute unacceptable damage, will be documented and indicated as signs of wear, if applicable.

Damage or defects that, according to the applicable standard, can no longer be attributed to normal use or wear and tear are listed under "Value Reducing Factors" in the product description.

Depending on the product specification, a monetary ID can be provided. If this takes place, the costs can be 100% d or pro rata depending on the vehicle's age and mileage.

Previous damages

According to available information previous damages were repaired at the vehicle. Traces of repairs, which allow conclusions about the area of repair, were not recognizable during the inspection.

Comments

- Winterradsatz ist kein Bestandteil des Auslieferungsumfangs.



Figure 1: Diagonal front (left)



Figure 2: Diagonal front (right)



Figure 3: Diagonal rear (left)



Figure 4: Diagonal rear (right)



Figure 5: Interior - front



Figure 6: Interior - rear



Figure 7: Instrument cluster



Figure 8: Instrument panel



Figure 9: Instrument panel



Figure 10: Interior 360° view



Figure 11: Cargo area

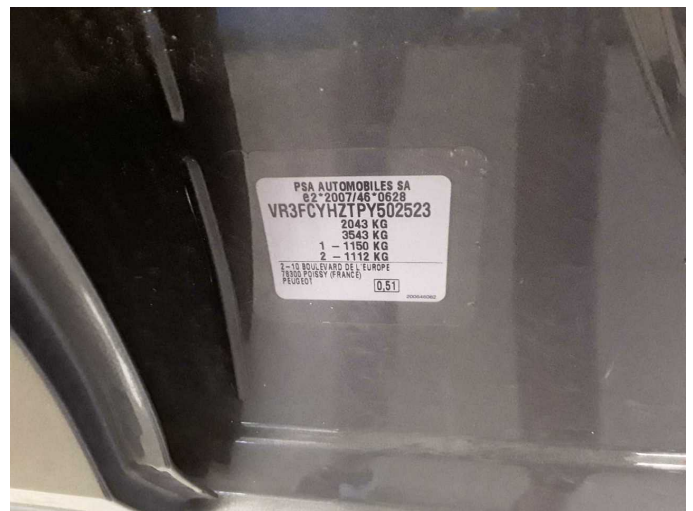


Figure 12: VIN



Figure 13: Mounted tyres

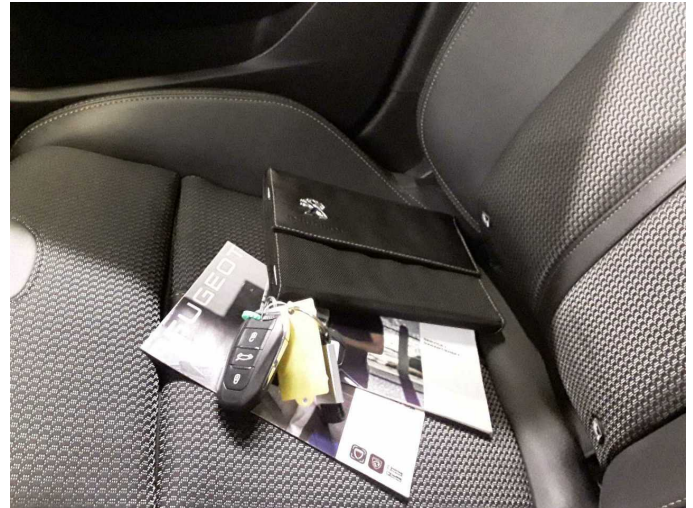


Figure 14: Documents

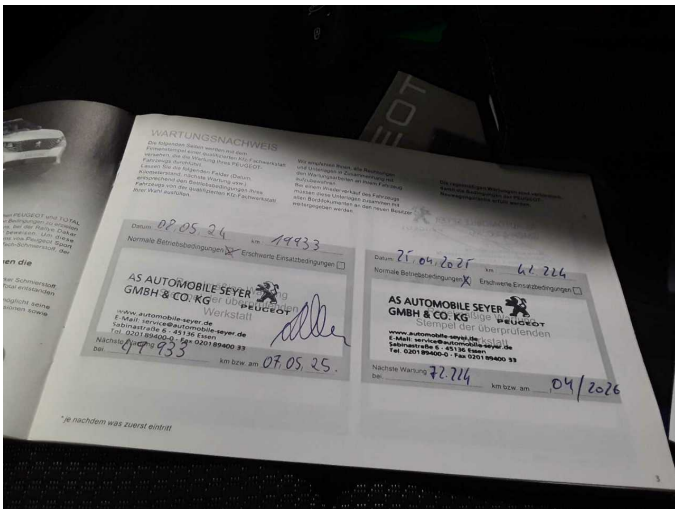


Figure 15: Documents

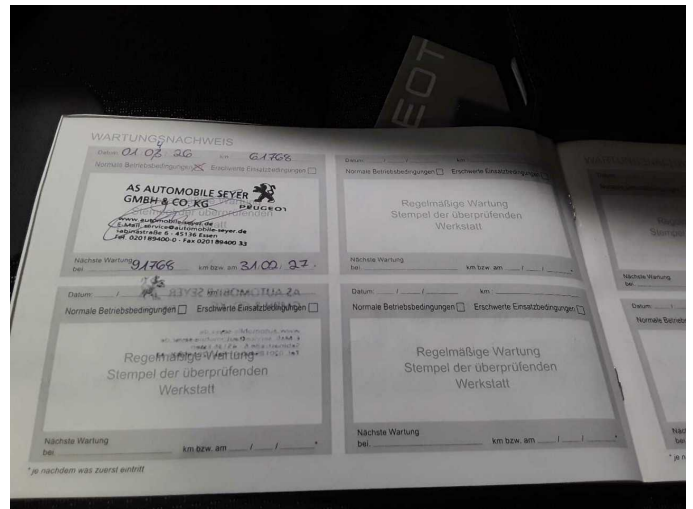


Figure 16: Documents



Figure 17: Additional tyres



Figure 18: Navigation



Figure 19: Misc.



Figure 20: Misc.



Figure 21: Misc.

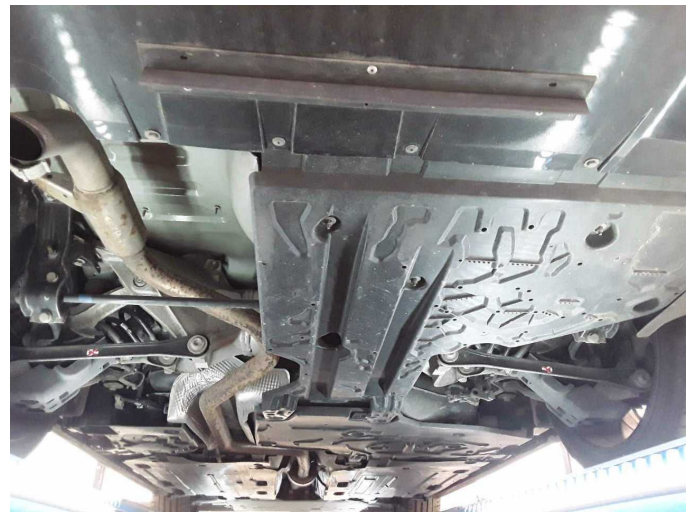


Figure 22: Misc.



Figure 23: Misc.



Figure 24: Misc.



Figure 25: Misc.

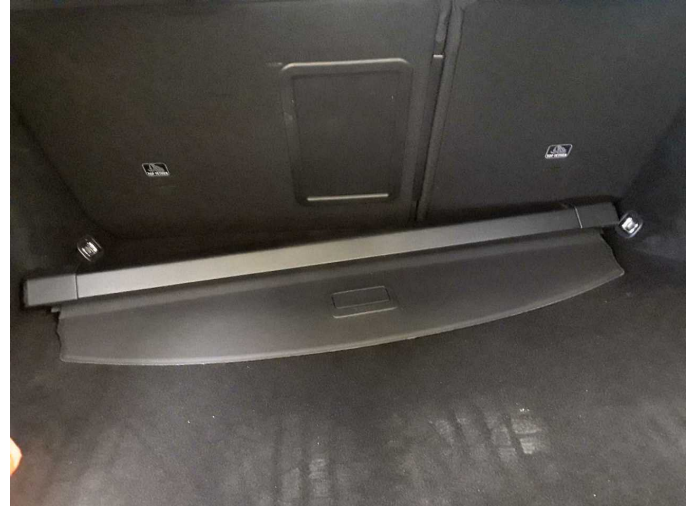


Figure 26: Misc.



Figure 27: Misc.

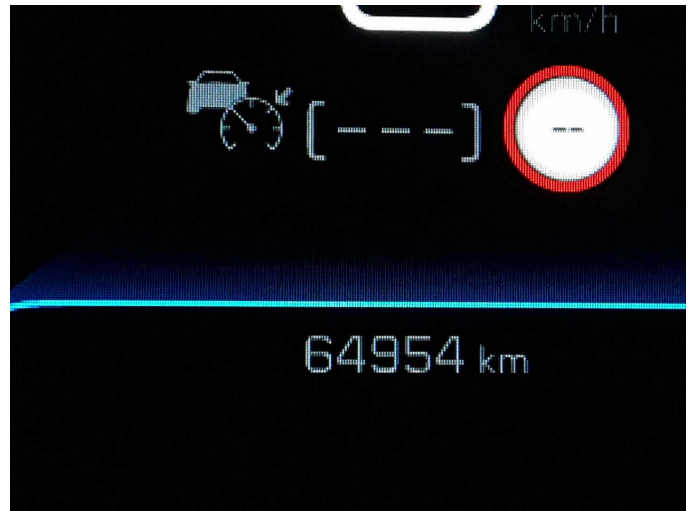


Figure 28: Misc.

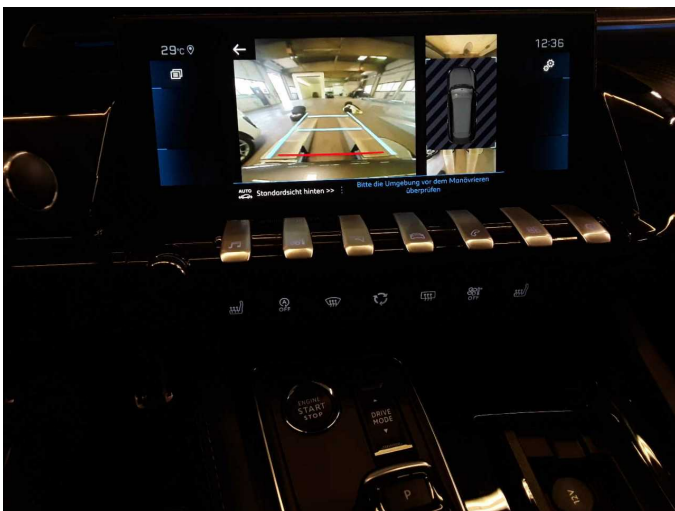


Figure 29: Misc.



Figure 30: Misc.



Figure 31: Misc.



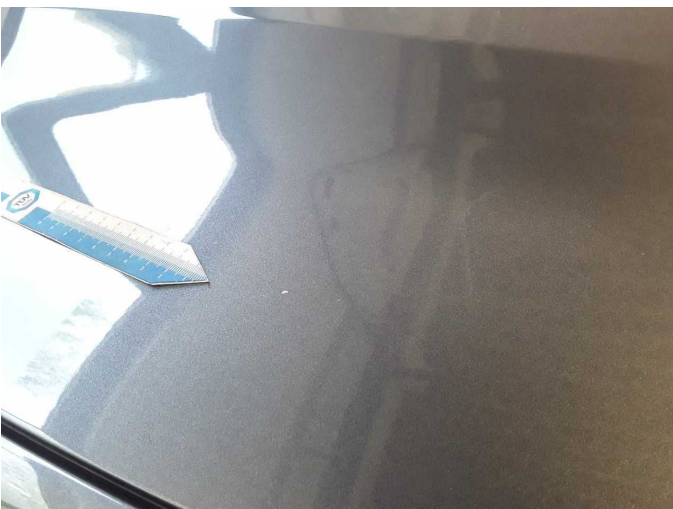
Damage 1: Door - front right side: Door - Scratch(es) - Smart repair



Damage 1: Door - front right side: Door - Scratch(es) - Smart repair



Wear and tear 1: Bonnet: Bonnet - Stone chips - No deduction



Wear and tear 1: Bonnet: Bonnet - Stone chips - No deduction



Wear and tear 2: Vehicle glazing: Windscreen - Stone chips - No deduction



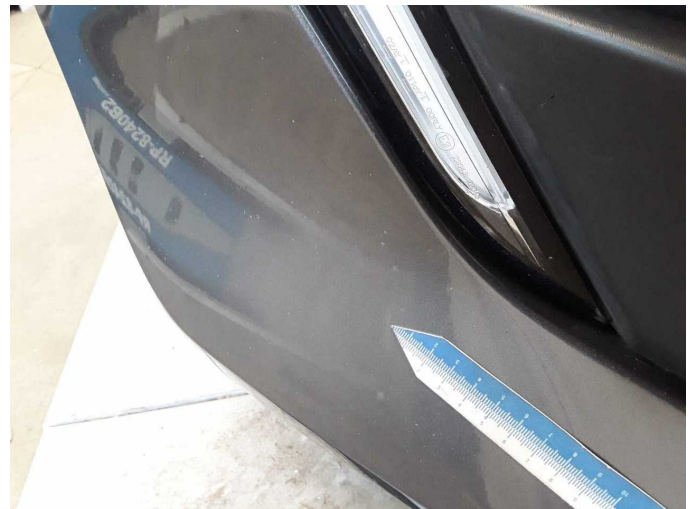
Wear and tear 2: Vehicle glazing: Windscreen - Stone chips - No deduction



Wear and tear 3: Front bumper: Front bumper - Stone chips - No deduction



Wear and tear 3: Front bumper: Front bumper - Stone chips - No deduction



Wear and tear 3: Front bumper: Front bumper - Stone chips - No deduction



Wartungshistorie

(gemäß Auftraggeber Informationen)

Fahrgestellnummer: VR3FCYHZTPY502523

Hersteller / Modell: PEUGEOT PEUGEOT 508 SW BlueHDi 130 EAT8 GT

Datum	KM-Stand	Beschreibung
06.05.2026	63.918	AU
02.04.2026	61.768	Kraftstofffilter ern; Luftfiltereinsatz ern; Motoröl b. Wartung; Ölfilter ern; Regelwartungsdienst; Wartung Sonstiges
25.04.2025	42.224	Bremsflüssigkeit; Bremsflüssigkeit ern; Motoröl b. Wartung; Ölfilter ern; Regelwartungsdienst; Wartung Sonstiges
08.05.2024	19.334	Motoröl b. Wartung; Ölfilter ern; Regelwartungsdienst; Wartung Sonstiges