

Expertise

Protocol number: 45931925
Order No. / Reference: 26463038
Inspection date: 11 Jun 2026

Manufacturer: Opel

Model: Combo-e Cargo XL (50-kWh) Edition

VIN: W0VEAZKXZPJ552780



Vehicle details

Manufacturer / Type / Model / Equipment

Opel Combo-e Cargo XL (50-kWh) Edition

Vehicle Identification number W0VEAZKXZPJ552780

Mileage (Read) 19,571 km

First registration 16 Mar 2023

Number of holders 1

Power / Engine displacement 57 kw /

Fuel type / Cylinder Electric / 0

Gearbox / Number of gears Direct drive / 1

Type of drive Front drive

Type of vehicle Van

Colour / colour code Jade Weiß

Doors / Seats 4 / 2

Upholstery type Cloth

Colour of upholstery Black-Grey



Vehicle details

Maintenance booklet / proof	digital proof / complete	Next maintenance in	
Last service on / at	04/2025 at 10,624 km		
Key is / should be	2 / 2	FZG documents	ZB#2 (B) was available (copy), ZB#1 (S) was not available.
		Letter No.	GQ370399
Previous damage / Accident	Detectable	Repainting	Detectable
Inspection conditions	sufficient	Lifting equipment / pit	yes
Test drive	Not performed	Engine function test	Performed
Manufacturer key number/ type code number	1844 / AML 00196		
Emission standard	2017/1151;WLTP;reine Elektrofz	fine dust sticker	
Permitted total weight	2,385 kg	Empty weight	

Tyres

Mounted tyres

#	Tyre size	Type of tyre	Manufacturer	Tread depth
1)	215/65 R16 98H	All-season tyres on Steel rim with wheel cover	Nexen	5mm / 5mm
2)	215/65 R16 98H	All-season tyres on Steel rim with wheel cover	Nexen	7mm / 7mm

Replacement

Typ	Tyre size	Type of tyre	Manufacturer	Tread depth
E	215/65 R16 98H	Summer tyres on Steel	Michelin	7 mm

Legend: Tread depth information for the left tire is listed first, for the right tire it is listed second on the axle in the direction of travel.

Equipment

Standard equipment

- Storage compartments (Edition) (Storage compartment in the instrument panel, driver's side, closed - Storage compartment in the center console, front - Storage shelf above the windshield, open - Storage compartment in the front doors, suitable for 1.5-liter beverage bottles - Glove compartment, closed - Storage compartment on the dashboard, passenger side, closed)
- Hill Start Assist
- On-board computer
- third brake light
- Deletion: Interior rearview mirror
- Driver information display, 3.5"
- Speed controller and limiter
- Paint finish: Solid color paint
- Electric parking brake
- Parkpilot, rear parking aid
- Radio BT (Audio: - Bluetooth audio streaming Phone: - Hands-free calling via Bluetooth interface - Display of phonebook and call lists - Up to 5 mobile phones can be paired General: - Use of the voice control of the paired smartphone possible (e.g. Siri, Google voice control) - USB interface - 4 speakers)
- Power steering
- Sun visors, driver and passenger
- Daytime running light
- Doors: Sliding door, passenger side, sheet metal
- Immobiliser
- Central locking
- Driver's side airbag
- Active pedestrian warning tone (AVAS) (ambient noise up to a driving speed of 50 km/h)
- Anti-lock braking system (ABS)
- Automatic dipped headlights
- Exterior mirrors, electrically adjustable, heated and manually folding
- Floor covering: Cargo area floor, painted
- Adaptive brake light
- Charger: Onboard charger (vehicle-integrated charging unit), 3-phase
- Electric front windows
- Transmission: Direct drive
- Charging cable: Mode 2 charging cable (Type 2, up to 1.8 kW), 6 meters long
- Upholstery: 2 seats with fabric upholstery (Edition) (Driver's seat 6-way adjustable (length, height and backrest angle) with lumbar support and armrest - Single passenger seat, fixed - Headrests, height adjustable, front)
- Radio accessories: Digital radio reception DAB+ (Digital Audio Broadcasting)
- Wheels: Steel wheels 6.5 J x 16 (tires 205/60 R16 XL 96H - wheel hub cover)
- 12-volt power outlet in the center console, front
- Doors: Sheet metal insert, driver's side
- Lashing eyes (6) in the cargo area
- Heat-insulating glazing, tinted
- Ignition keys (2), one of which is foldable

Extra equipment

- Airbag, driver and passenger side, as well as side airbags
- Anti-slip mat set
- Rear wing doors, asymmetrically split, glazed, 180° opening angle (rear window wiper - rear window heater)
- Leather steering wheel, flattened at the bottom
- Package: Grip & Go (IntelliGrip (Adaptive traction system with 5 selectable modes): - ESP off - ESP standard - Snow mode - Mud mode - Sand mode - Hill descent control - Metal underbody protection - 215/65 R 16 SL 98H off-road tires - Raised suspension)
- Retrofitting a reversing camera
- Window tinting with film in the cargo area
- Keyless locking and starting system "Keyless Open & Start" (for driver and passenger doors as well as rear wing doors or tailgate - driver and passenger airbags)
- FlexCargo partition wall with window (with pass-through function below the passenger double seat including protective bag for the load)
- All-weather tires
- Bott Interior Design
- Automatic climate control: Dual-zone automatic climate control, front (with particle and odor filter - recirculation mode, manual - automatic air distribution - sun position sensor - activated carbon filter - split glove compartment - visibility package)
- Radio: Multimedia Navi Pro with 8" color touchscreen display and voice control for audio, telephone, and navigation (automatic music recognition for audio devices with USB connection - Bluetooth audio streaming - hands-free calling via Bluetooth - phonebook and call list display - up to 10 mobile phones can be paired - image display via USB interface - navigation with integrated memory - European road map - TMC - route planning - GPS module - smartphone integration (Apple/Android) - USB interface - dual tuner - graphic equalizer - 4 speakers - steering wheel controls)



Brief expert findings

Documents submitted	At the time of the inspection, the vehicle registration certificate Part 2 (title) was available, but the vehicle registration certificate Part 1 (document) was not. (Copy)
VIN comparison	The vehicle identification number (VIN) was read from the vehicle and its conformity with the submitted documents was confirmed by the undersigned during the inspection.
Inspection	The inspection conditions were sufficient for the assessment of the vehicle. Lifting equipment and/or a pit were available for examining the vehicle.
Test drive	No test drive/shunting maneuver was carried out during the inspection of the vehicle.
Engine function test	An engine test run was performed.

Value reducing factors

No.	Component group	Description
1	Misc.	Main inspection - No evidence - No deduction
2	Misc.	Inspection / maintenance - No evidence - No deduction
3	Roof	Roof - dent(s) - Smart repair
4	Front bumper	Spoiler - Scratched - Smart repair

Wear and tear

No.	Component group	Description
1	Rear bumper	Rear bumper - Scratch(es) - No deduction
2	Side panel - rear left side	Side panel - Scratch(es) - No deduction

The vehicle shows signs of wear and tear commensurate with its age and use.

Previous damages

No.	Previous damage	Extent of damage (Net)
1	Rear, Professionally repaired, Invoice of repair done Non-existent	

Repainting

No.	Repainting
1	Boot lid / rear door, Professionally carried out, Invoice of repair done Non-existent

Paint coat thickness measurement

Boot lid / rear door	251 µm
----------------------	--------

Order/Scope of Order

- An order was placed to prepare a sales report for the described vehicle. This report includes the following:
- Description of key vehicle information
 - Documentation of equipment features
(Delivery by third-party service providers)
 - Documentation of damage, defects, missing parts
 - Documentation of prior damage, unrepaired prior damage, repainting
 - A brief visual or functional inspection of the equipment details, if possible.
(Functional testing of driver assistance systems is not included in the scope of services!)
 - a photographic documentation of the vehicle



Basis for the order

This product is based on the guidelines for vehicle returns and valuations of light commercial vehicles published by Alphabet Fleet Management GmbH. The expert makes the specific findings in each individual case objectively, within the framework of the prescribed standards, based on their own expertise.

The vehicle inspection takes place in a fully assembled, unassembled state.

Damage or defects that can only be detected during disassembly/diagnostic work or through further investigation remain within the realm of prognostic risk. An increased risk exists due to concealed defects caused by fraudulent misrepresentation and which were not identifiable by the expert.

Damage or defects resulting from normal use or wear and tear of the vehicle will be accepted in accordance with the applicable standard.

There was no explicit identification or monetary consideration of the expected features within the product.

Features which, in their nature and extent, slightly exceed normal use but do not constitute unacceptable damage, will be documented and indicated as signs of wear, if applicable.

Damage or defects that, according to the applicable standard, can no longer be attributed to normal use or wear and tear are listed under "Value Reducing Factors" in the product description.

Depending on the product specification, a monetary ID can be provided. If this takes place, the costs can be 100% d or pro rata depending on the vehicle's age and mileage.

Previous damages

Professionally repaired previous damages were found at the vehicle.



Figure 1: Diagonal front (left)



Figure 2: Diagonal front (right)



Figure 3: Diagonal rear (left)



Figure 4: Diagonal rear (right)

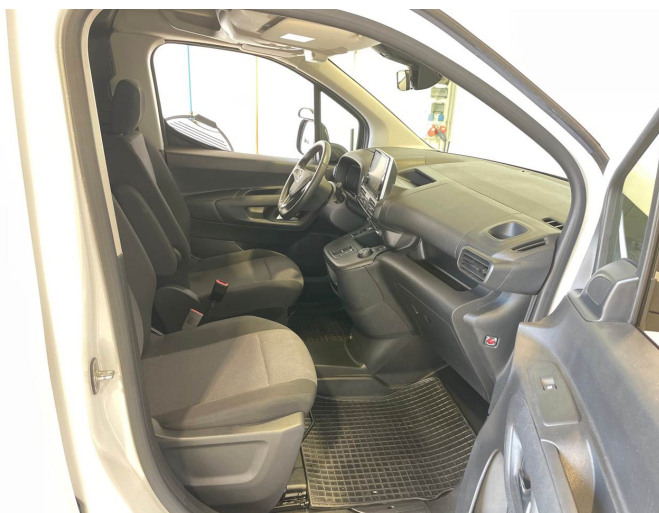


Figure 5: Interior - front



Figure 6: Interior - rear



Figure 7: Instrument cluster



Figure 8: Instrument panel



Figure 9: Interior 360° view



Figure 10: Cargo area

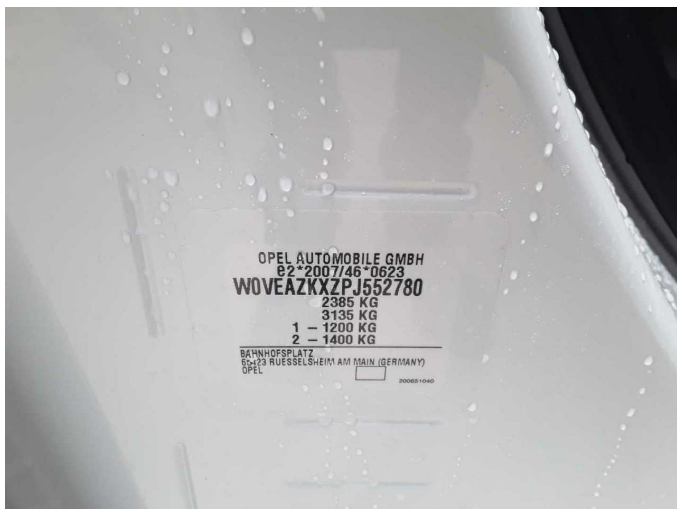


Figure 11: VIN



Figure 12: Mounted tyres



Figure 13: Documents



Figure 14: Documents



Figure 15: Navigation



Figure 16: Misc.



Figure 17: Misc.



Figure 18: Misc.



Figure 19: Misc.



Figure 20: Misc.



Figure 21: Misc.



Figure 22: Misc.



Figure 23: Misc.



Figure 24: Misc.



Figure 25: Misc.



Figure 26: Misc.



Damage 3: Roof: Roof - dent(s) - Smart repair



Damage 3: Roof: Roof - dent(s) - Smart repair



Damage 3: Roof: Roof - dent(s) - Smart repair



Damage 4: Front bumper: Spoiler - Scratched - Smart repair



Damage 4: Front bumper: Spoiler - Scratched - Smart repair



Damage 4: Front bumper: Spoiler - Scratched - Smart repair



Repainting 1: Boot lid / rear door



Repainting 1: Boot lid / rear door



Wartungshistorie

(gemäß Auftraggeber Informationen)

Fahrgestellnummer: W0VEAZKXZPJ552780

Hersteller / Modell: OPEL OPEL Combo-e Cargo XL (50-kWh) Edition

Datum	KM-Stand	Beschreibung
10.04.2025	10.624	Bremsflüssigkeit; Bremsflüssigkeit ern; Regelwartungsdienst; Systemtest/ Eigendiagnose
04.04.2024	4.291	Regelwartungsdienst