

## Expertise

Protocol number: 46318528  
Order No. / Reference: 26542435  
Inspection date: 3 Jul 2026

Manufacturer: Opel

Model: Astra Sports Tourer 1.5 D Automatik GS Line

VIN: VXKFCYHZTP1087251



### Vehicle details

#### Manufacturer / Type / Model / Equipment

Opel Astra Sports Tourer 1.5 D Automatik GS Line

|   |                                 |
|---|---------------------------------|
| <b>Vehicle Identification number</b>        | VXKFCYHZTP1087251               |
| <b>Mileage (Read)</b>                       | 147,065 km                      |
| <b>First registration</b>                   | 7 Dec 2023                      |
| <b>Number of holders</b>                    | 1                               |
| <b>Next periodical technical inspection</b> | 12/2026<br>(Report not on hand) |

|                                    |                   |
|------------------------------------|-------------------|
| <b>Power / Engine displacement</b> | 96 kw / 1,499 ccm |
|------------------------------------|-------------------|

|                             |            |
|-----------------------------|------------|
| <b>Fuel type / Cylinder</b> | Diesel / 4 |
|-----------------------------|------------|

|                                  |               |
|----------------------------------|---------------|
| <b>Gearbox / Number of gears</b> | Automatic / 8 |
|----------------------------------|---------------|

|                      |             |
|----------------------|-------------|
| <b>Type of drive</b> | Front drive |
|----------------------|-------------|

|                        |               |
|------------------------|---------------|
| <b>Type of vehicle</b> | Station wagon |
|------------------------|---------------|

|                             |                      |
|-----------------------------|----------------------|
| <b>Colour / colour code</b> | Kobalt Blau Metallic |
|-----------------------------|----------------------|

|                      |       |
|----------------------|-------|
| <b>Doors / Seats</b> | 5 / 5 |
|----------------------|-------|

|                        |         |
|------------------------|---------|
| <b>Upholstery type</b> | Leather |
|------------------------|---------|

|                             |       |
|-----------------------------|-------|
| <b>Colour of upholstery</b> | Black |
|-----------------------------|-------|



## Vehicle details

|  |                              |                                |  |
|--|------------------------------|--------------------------------|--|
| <b>Maintenance booklet / proof</b>                   | Available / complete         | <b>Next maintenance in</b>     | 5 Monat(e)   |
| <b>Key is / should be</b>                            | 2 / 2                        | <b>FZG documents</b>           | ZB#2 (B) was available (copy), ZB#1 (S) was not available. |
|  |                              | <b>Letter No.</b>              | GY766375   |
| <b>Previous damage / Accident</b>                    | None detectable              | <b>Repainting</b>              | None detectable  |
| <b>Inspection conditions</b>                         | sufficient                   | <b>Lifting equipment / pit</b> | No   |
| <b>Test drive</b>                                    | Not performed                | <b>Engine function test</b>    | Performed  |
| <b>Manufacturer key number/<br/>type code number</b> | 1889 / AEY 00087             |                                |  |
| <b>Emission standard</b>                             | EURO6;WLTP;AP;PI/CI; M, N1 I | <b>fine dust sticker</b>       |  |
| <b>Permitted total weight</b>                        | 1,980 kg                     | <b>Empty weight</b>            |  |

## Tyres

### Mounted tyres

| #  | Tyre size      | Type of tyre                | Manufacturer | Tread depth |
|----|----------------|-----------------------------|--------------|-------------|
| 1) | 225/40 R18 92Y | Summer tyres on Light alloy | Kumho        | 7mm / 7mm   |
| 2) | 225/40 R18 92Y | Summer tyres on Light alloy | Kumho        | 7mm / 7mm   |

### Additional tyres

| #  | Tyre size      | Type of tyre                | Manufacturer | Tread depth |
|----|----------------|-----------------------------|--------------|-------------|
| 1) | 225/45 R17 94V | Winter tyres on Light alloy | Continental  | 5mm / 5mm   |
| 2) | 225/45 R17 94V | Winter tyres on Light alloy | Continental  | 6mm / 6mm   |

### Replacement

| Typ     | Tyre size | Type of tyre            | Manufacturer | Tread depth |
|---------|-----------|-------------------------|--------------|-------------|
| Tirefit |           | Expiration date 05/2029 |              |             |

**Legend: Tread depth information for the left tire is listed first, for the right tire it is listed second on the axle in the direction of travel.**



## Equipment

### Standard equipment

- Storage compartments
- Airbag: Front airbags, driver and front passenger
- Airbag: Front and rear outer head airbags
- Anti-lock braking system (ABS)
- Exterior mirrors, electrically adjustable, heated and folding
- Hill Start Assist
- third brake light
- Tachometer
- Electronic Stability Program (ESP) and Traction Control with engine and brake intervention (TCPlus)
- Transmission: 8-speed automatic transmission
- rear window wiper
- Interior rearview mirror, automatically dimming
- Dual-zone automatic climate control
- Paint finish: Roof in carbon black
- LED interior lighting
- Steering wheel: Leather steering wheel, flattened, perforated, with steering wheel remote control and paddle shifters
- Multimedia infotainment system
- Opel Blitz logo, Astra lettering on the rear
- Parkpilot, front and rear parking aid
- Tire pressure monitoring system
- Rear seat backrest folds forward in a 40:20:40 split
- Seat belts: Three-point seat belts in all seats
- Seats: Ergonomic sport active seat driver Stoff Greta/Premium leather look
- Start/Stop System
- Pre-wiring for ISOFIX child seat mounting system
- Central locking with remote control

### Extra equipment

- Intelli-Drive 1.0 (Forward Collision Warning with Automatic Emergency Braking, Pedestrian Detection, Active Lane Keeping Assist, Traffic Sign Recognition and Driver Alert System, Cross Traffic Alert and Automatic Speed Assist with Stop Function, Blind Spot Warning)
- Seats: Ergonomic sport active seats for driver and front passenger, Nappa leather upholstery (certified by the German Campaign for Healthy Backs (AGR)), driver/front passenger - leather, black, perforated, including leather seat contact surfaces - driver's seat: electrically adjustable, memory function, massage function - front passenger seat: massage function - electro-pneumatic lumbar support, height/length adjustable - extendable thigh support - pockets on the back of the front seats, driver/front passenger - seat ventilation - multi-stage seat heating, front/rear - heated leather steering wheel - heated ThermoTec windshield)

- Airbag: Chest-pelvis-side airbags, driver and front passenger
- Aluminum pedals
- Automatic activation of the hazard warning lights
- Exterior mirror housings in black
- On-board computer
- Diesel particulate filter (DPF) maintenance-free
- Electronic brake force distribution (EBD)
- Electric windows front and rear
- Front collision warning system
- Back window, heater
- High Gloss Black trim
- Wiring harness for trailer hitch
- Front headrests and 3 rear headrests, height adjustable
- LED ambient lighting
- LED headlights
- Steering wheel heating
- Illuminated makeup mirrors in both sun visors
- Center armrest, front and rear
- Fog light
- Electric parking brake
- Tire repair kit
- Reversing camera: 360-degree reversing camera
- Keyless locking and starting system Keyless Open & Start
- safety net
- Heated seats, driver and passenger
- Solar Protect thermal insulation glazing
- 12V power outlet in the center console
- Electronic immobilizer

- Detachable trailer hitch (including trailer stability program TSP)
- Electric tailgate, sensor-controlled (self-opening and self-closing via foot gesture)
- Navigation system, Hi-Fi sound system and head-up display (multimedia infotainment system with 10" color touchscreen display and 10" driver information display; navigation system with integrated memory; 3D map display for Europe and Russia; dynamic route guidance; TomTom Online Traffic; online POI search and route guidance; parking information; fuel price information; live weather; over-the-air map updates; intelligent voice control; "Hey Opel" quick button with 6 functions; active route suggestions; Hi-Fi sound system with 8 speakers)
- Paint finish: Metallic Cobalt Blue
- Wheels: Alloy wheels 7.5 J x 18 (5 spokes) in BiColor/Black (with tires 225/40 R 18)



## Brief expert findings

|                      |   |
|----------------------|---|
| Documents submitted  | At the time of the inspection, the vehicle registration certificate Part 2 (title) was available, but the vehicle registration certificate Part 1 (document) was not. (Copy)  |
| VIN comparison       | The vehicle identification number (VIN) was read from the vehicle and its conformity with the submitted documents was confirmed by the undersigned during the inspection.   |
| Inspection           | The inspection conditions were sufficient for the assessment of the vehicle.<br>No lifting equipment or pit was available for inspecting the vehicle. Therefore, inspection of the vehicle's underside was only possible to a limited extent. |
| Test drive           | No test drive/shunting maneuver was carried out during the inspection of the vehicle.   |
| Engine function test | An engine test run was performed.   |

## Value reducing factors

| No. | Component group              | Description                                 |
|-----|------------------------------|---|
| 1   | Door - front right side      | Door edge - Scratch(es) - Smart repair      |
| 2   | Engine                       | Engine cover - Broken / torn - Replace      |
| 3   | Bonnet                       | Insulation lining - Broken / torn - Replace |
| 4   | Rear bumper                  | Rear bumper - Scratch(es) - Paint           |
| 5   | Side panel - rear right side | Side panel - Scratch(es) - Paint            |
| 6   | Door - rear right side       | Door - Scratch(es) - Paint                  |
| 7   | Door - rear left side        | Door - Scratch(es) - Paint                  |

## Wear and tear

| No. | Component group | Description                               |
|-----|-----------------|---|
| 1   | Bonnet          | Bonnet - Stone chips - No deduction       |
| 2   | Front bumper    | Front bumper - Stone chips - No deduction |
| 3   | Vehicle glazing | Windscreen - Stone chips - No deduction   |
| 4   | Interior        | Interior - Scratch(es) - No deduction     |
| 5   | 2nd wheel set   | 1 alloy rim - Scratch(es) - No deduction  |

The vehicle shows signs of wear and tear commensurate with its age and use.

## Order/Scope of Order

An order was placed to prepare a sales report for the described vehicle. This report includes the following:

- Description of key vehicle information
- Documentation of equipment features  
(*Delivery by third-party service providers*)
- Documentation of damage, defects, missing parts
- Documentation of prior damage, unrepaired prior damage, repainting
- A brief visual or functional inspection of the equipment details, if possible.  
(*Functional testing of driver assistance systems is not included in the scope of services!*)
- a photographic documentation of the vehicle



## Basis for the order

This product is based on the guidelines for vehicle returns and valuations published by Alphabet Fleet GmbH. The expert makes the specific findings in each individual case objectively, within the framework of the prescribed standards, based on their own expertise.

The vehicle inspection takes place in a fully assembled, unassembled state.

Damage or defects that can only be detected during disassembly/diagnostic work or through further investigation remain within the realm of prognostic risk. An increased risk exists due to concealed defects caused by fraudulent misrepresentation and which were not identifiable by the expert.

Damage or defects resulting from normal use or wear and tear of the vehicle will be accepted in accordance with the applicable standard.

There was no explicit identification or monetary consideration of the expected features within the product.

Features which, in their nature and extent, slightly exceed normal use but do not constitute unacceptable damage, will be documented and indicated as signs of wear, if applicable.

Damage or defects that, according to the applicable standard, can no longer be attributed to normal use or wear and tear are listed under "Value Reducing Factors" in the product description.

Depending on the product specification, a monetary ID can be provided. If this takes place, the costs can be 100% d or pro rata depending on the vehicle's age and mileage.

## Previous damages

No apparent prior damage that had been repaired could be found on the vehicle.

## Comments

- Die Unterbodenbesichtigung war nur ebenerdig und eingeschränkt möglich.
- Mehrkosten möglich .
  
- Winterradsatz ist kein Bestandteil des Auslieferungsumfangs.



Figure 1: Diagonal front (left)



Figure 2: Diagonal front (right)



Figure 3: Diagonal rear (left)



Figure 4: Diagonal rear (right)



Figure 5: Interior - front



Figure 6: Interior - rear

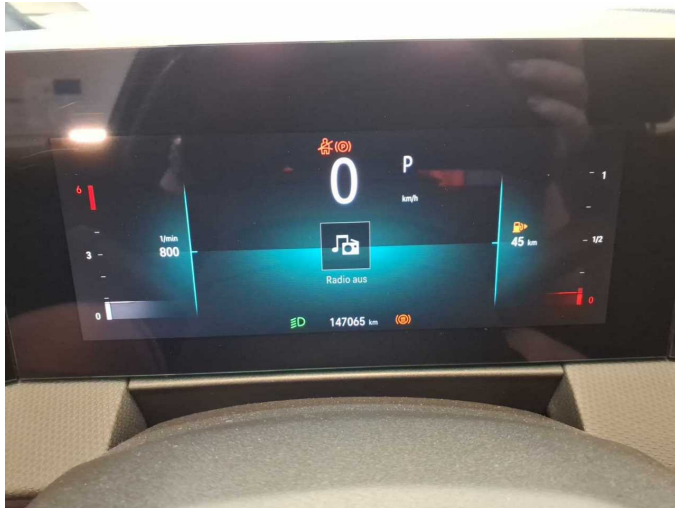


Figure 7: Instrument cluster



Figure 8: Instrument panel



Figure 9: Interior 360° view



Figure 10: Cargo area

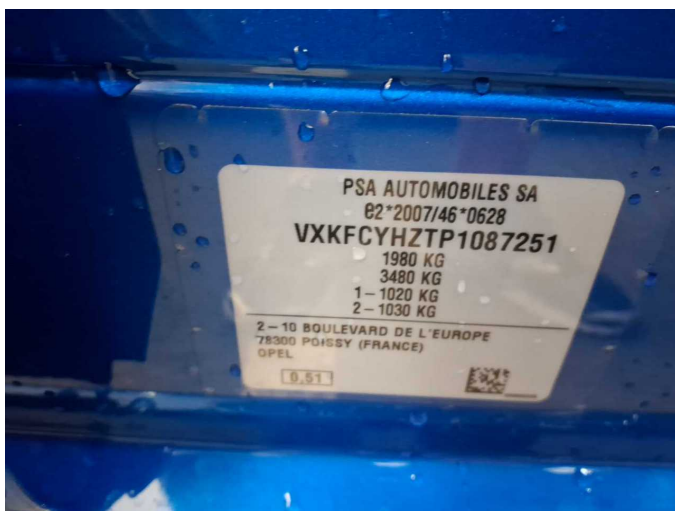


Figure 11: VIN



Figure 12: Mounted tyres



Figure 13: Documents

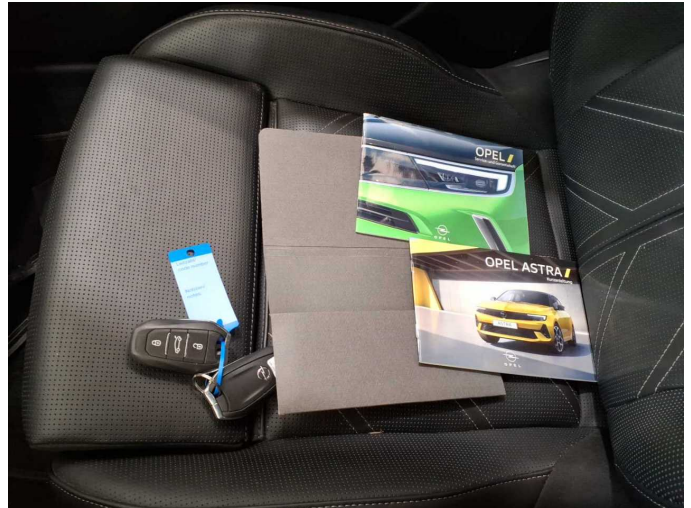


Figure 14: Documents

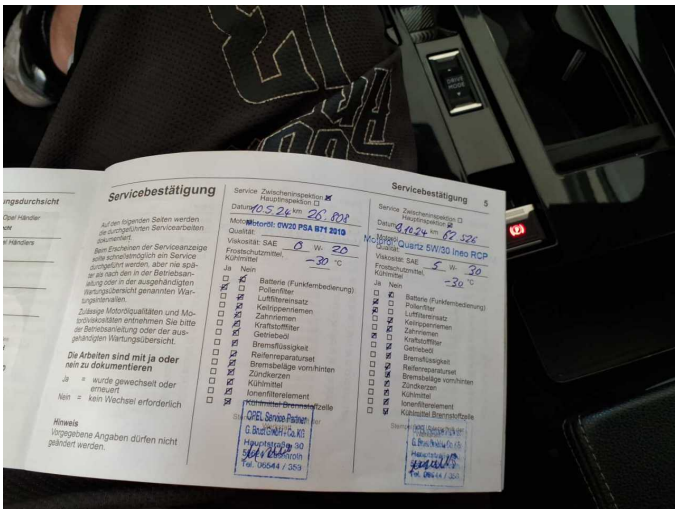


Figure 15: Documents



Figure 16: Documents



Figure 17: Additional tyres



Figure 18: Navigation



Figure 19: Misc.



Figure 20: Misc.

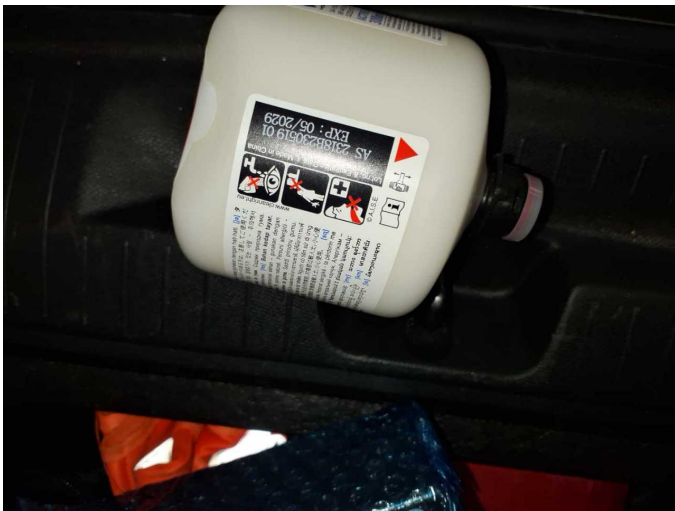


Figure 21: Misc.



Figure 22: Misc.



Figure 23: Misc.



Figure 24: Misc.



Figure 25: Misc.



Figure 26: Misc.



Figure 27: Misc.



Figure 28: Misc.

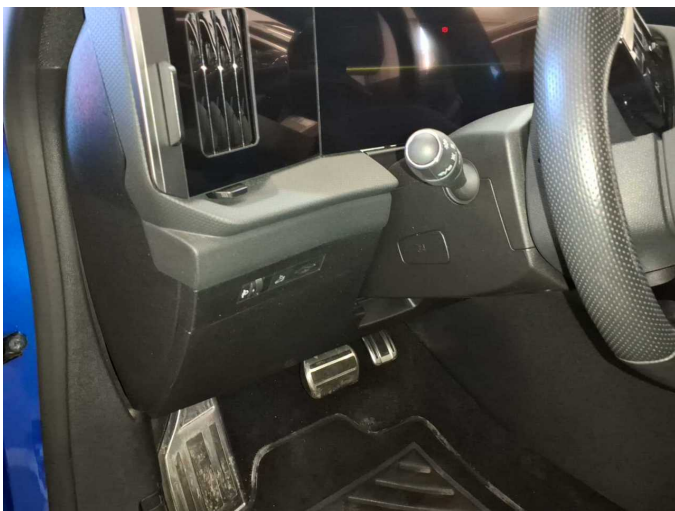


Figure 29: Misc.



Figure 30: Misc.



Figure 31: Misc.



Figure 32: Misc.



Figure 33: Misc.



Figure 34: Misc.

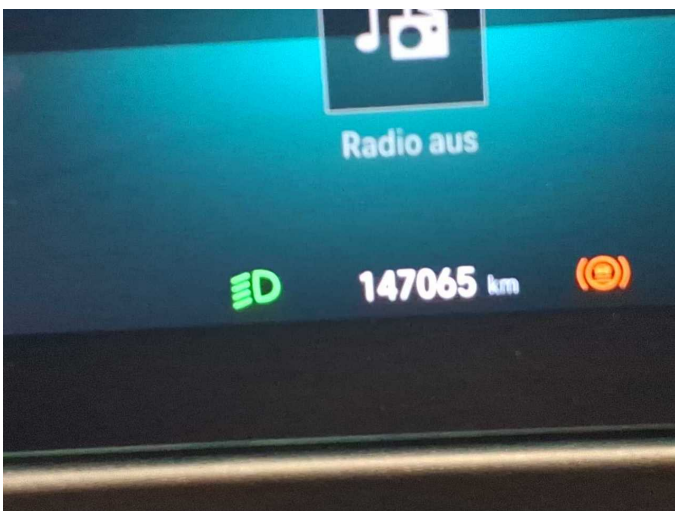


Figure 35: Misc.

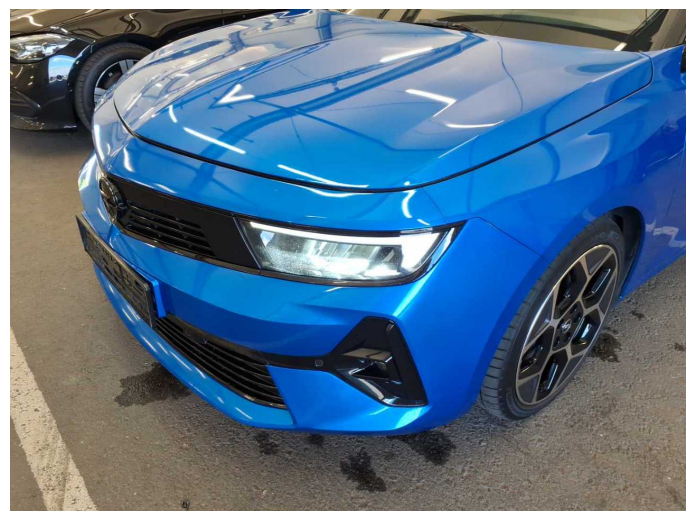


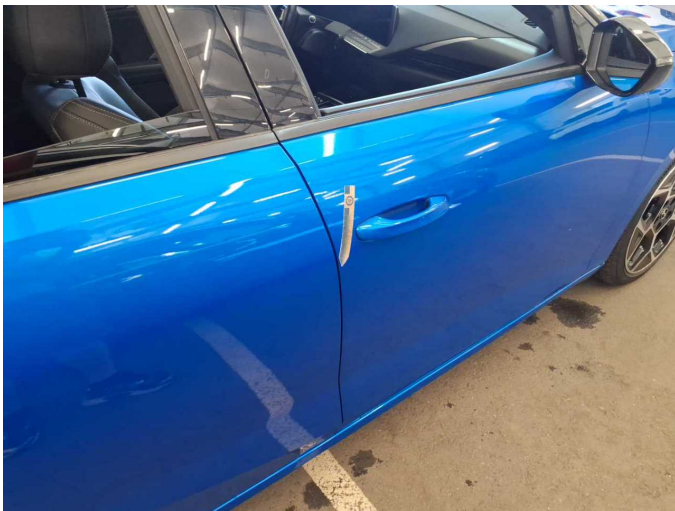
Figure 36: Misc.



**Figure 37:** Misc.



**Damage 1:** Door - front right side: Door edge - Scratch(es) - Smart repair



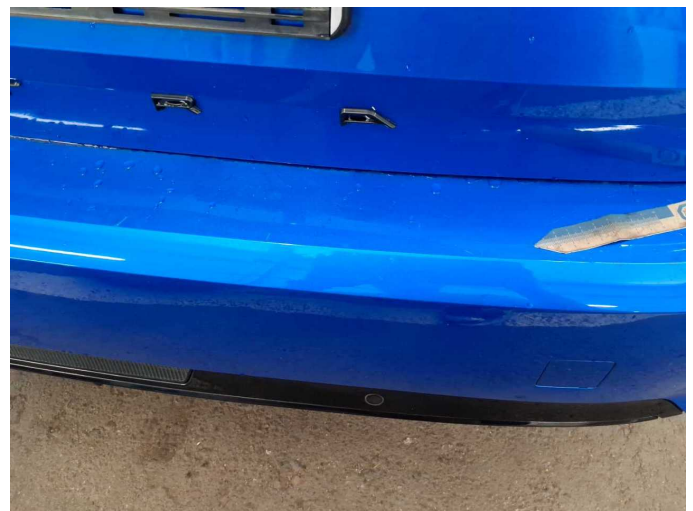
**Damage 1:** Door - front right side: Door edge - Scratch(es) - Smart repair



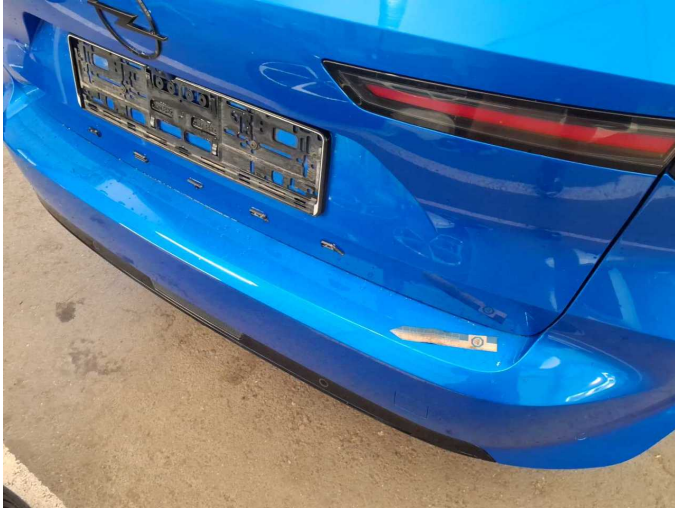
**Damage 2:** Engine: Engine cover - Broken / torn - Replace



**Damage 3:** Bonnet: Insulation lining - Broken / torn - Replace



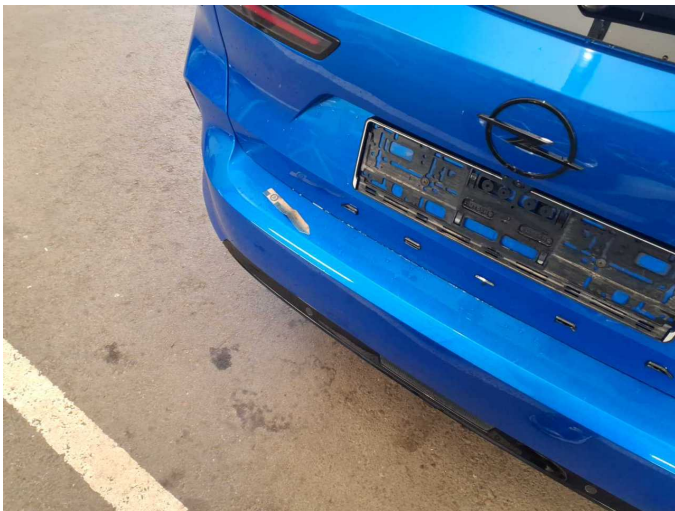
**Damage 4:** Rear bumper: Rear bumper - Scratch(es) - Paint



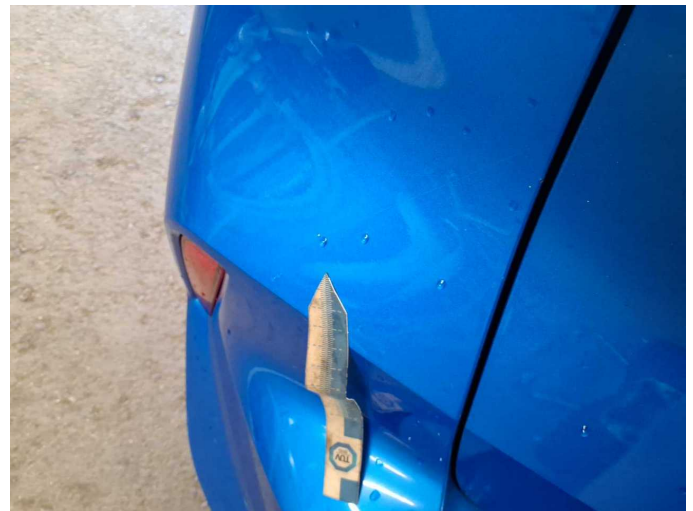
**Damage 4:** Rear bumper: Rear bumper - Scratch(es) - Paint



**Damage 4:** Rear bumper: Rear bumper - Scratch(es) - Paint



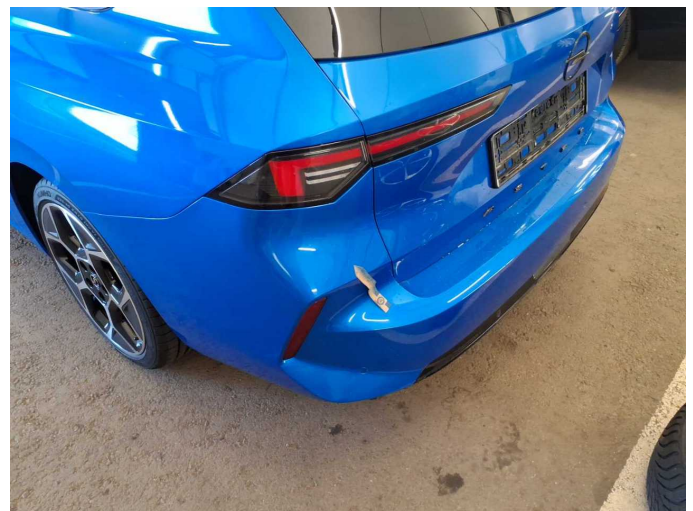
**Damage 4:** Rear bumper: Rear bumper - Scratch(es) - Paint



**Damage 4:** Rear bumper: Rear bumper - Scratch(es) - Paint



**Damage 4:** Rear bumper: Rear bumper - Scratch(es) - Paint



**Damage 4:** Rear bumper: Rear bumper - Scratch(es) - Paint



**Damage 5:** Side panel - rear right side: Side panel - Scratch(es) - Paint



**Damage 5:** Side panel - rear right side: Side panel - Scratch(es) - Paint



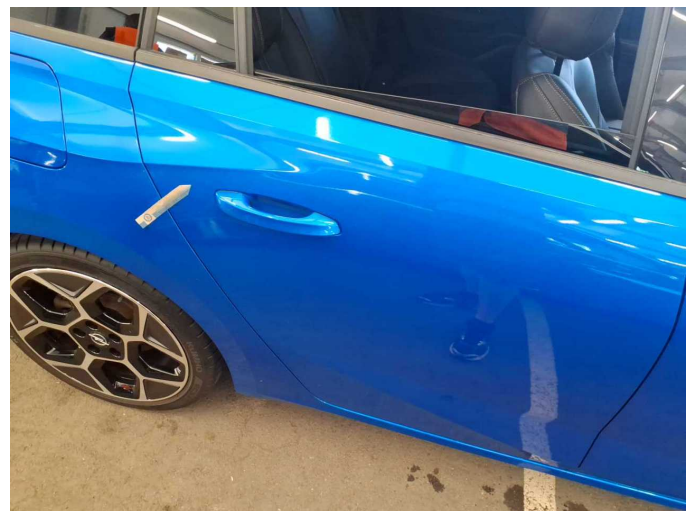
**Damage 6:** Door - rear right side: Door - Scratch(es) - Paint



**Damage 6:** Door - rear right side: Door - Scratch(es) - Paint



**Damage 6:** Door - rear right side: Door - Scratch(es) - Paint



**Damage 6:** Door - rear right side: Door - Scratch(es) - Paint



**Damage 7:** Door - rear left side: Door - Scratch(es) - Paint



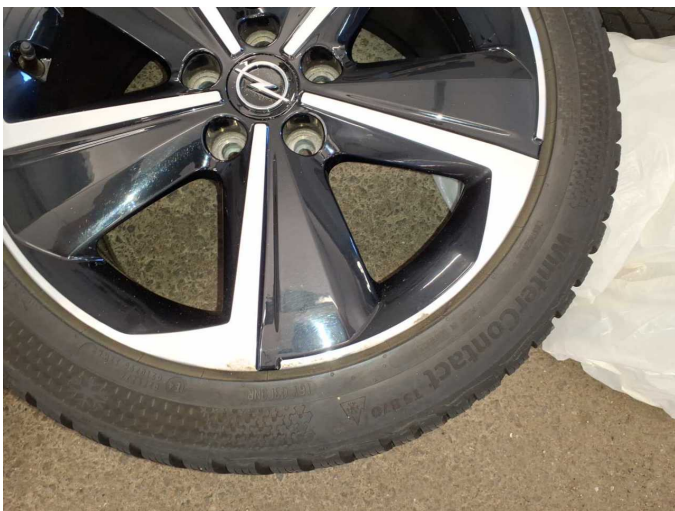
**Damage 7:** Door - rear left side: Door - Scratch(es) - Paint



**Damage 7:** Door - rear left side: Door - Scratch(es) - Paint



**Wear and tear 2:** Front bumper: Front bumper - Stone chips - No deduction



**Wear and tear 5:** 2nd wheel set: 1 alloy rim - Scratch(es) - No deduction