

Expertise

Protocol number: 46237949
Order No. / Reference: 26536776
Inspection date: 30 Jun 2026

Manufacturer: Volkswagen

Model: Touran 2.0 TDI SCR DSG Comfortline

VIN: WVGZZZ1T1PW004801



Vehicle details

Manufacturer / Type / Model / Equipment

Volkswagen Touran 2.0 TDI SCR DSG Comfortline

Vehicle Identification number WVGZZZ1T1PW004801

Mileage (Read) 140,988 km

First registration 23 Nov 2022

Number of holders 1

Power / Engine displacement 110 kw / 1,968 ccm

Fuel type / Cylinder Diesel / 4

Gearbox / Number of gears Automatic / 7

Type of drive Front drive

Type of vehicle Station wagon

Colour / colour code Pure White

Doors / Seats 5 / 5

Upholstery type Alcantara / cloth

Colour of upholstery Black-Anthracite

Re-import no

readiness to drive Roadworthy



Vehicle details			
Maintenance booklet / proof	digital proof / complete	Next maintenance in	29,500 km
Last service on / at	05/2024 at 56,239 km		
Key is / should be	2 / 2	FZG documents	ZB#2 (B) was available (copy), ZB#1 (S) was not available.
		Letter No.	GP780854
Previous damage / Accident	None detectable	Repainting	None detectable
Inspection conditions	sufficient	Lifting equipment / pit	yes
Test drive	Not performed	Engine function test	Performed
readiness to drive	Roadworthy		
Manufacturer key number/ type code number	0603 / BWR 00419		
Emission standard	EURO6;WLTP;AP;PI/CI; M, N1 I	fine dust sticker	
Permitted total weight	2,230 kg	Empty weight	

Tyres

Mounted tyres				
#	Tyre size	Type of tyre	Manufacturer	Tread depth
1)	205/60 R16 96H	Winter tyres on Light alloy	Continental	5mm / 5mm
2)	205/60 R16 96H	Winter tyres on Light alloy	Continental	5mm / 5mm
Additional tyres				
#	Tyre size	Type of tyre	Manufacturer	Tread depth
1)	205/60 R16 96V	Summer tyres on Light alloy	Pirelli	5mm / 5mm
2)	205/60 R16 96V	Summer tyres on Light alloy	Pirelli	6mm / 6mm
Replacement				
Typ	Tyre size	Type of tyre	Manufacturer	Tread depth
	Tirefit	Expiration date 08/2026		

Legend: Tread depth information for the left tire is listed first, for the right tire it is listed second on the axle in the direction of travel.



Equipment

Standard equipment

- 2 USB-C ports on the front
- Storage compartments in the overhead console
- Airbag, head airbag system for front and rear passengers
- Electrically folding exterior mirrors
- Exterior mirror housings and door handles in body color
- Headliner in Storm Grey
- Decorative inlays "New Brushed Design"
- Diesel particulate filter
- Tachometer
- Electronic parking brake including auto-hold function
- Automatic headlight control with daytime running lights
- Windscreen made of laminated safety glass, heat and sound insulating
- Baggage management package
- Additional luggage compartment lighting
- Transmission: 7-speed DSG
- Rear window heated
- Interior lights with delayed shut-off and dimming function, 2 reading lights front and rear
- Headrests (3) in the 2nd row of seats
- Black radiator grille with chrome strips on the slats
- Headlight range control
- Illuminated makeup mirrors in the sun visors
- Multifunctional camera
- Non-smoking version
- Emergency call service
- Upholstery in fabric
- Radio "Composition"
- Radio accessories: 8 speakers
- Rain sensor
- Wheels: Tire pressure monitoring system
- Gearshift knob in leather
- Drawers under the front seats
- Seat belts: 3 three-point automatic seat belts in the rear
- Seats: Front passenger seat backrest folds down completely
- Seats: Lumbar support in the front
- Lane keeping assistant "Lane Assist"
- Start-stop system
- Bumpers in body color
- Textile floor mats
- Prepared for "We Connect" and "We Connect Plus"
- Electronic immobilizer
- Central locking without safe locking, with remote control and 2 remote folding keys
- Storage compartment with lid on the instrument panel
- Airbag for driver and front passenger
- Adaptive Cruise Control (ACC) "stop & go", with speed limiter
- third brake light
- black roof rails
- Decorative inlays "Piano Black"
- Digital Cockpit, multicoloured
- Parking assistance
- Electronic Stability Program (ESP) with counter-steering support
- Pedestrian and cyclist detection as well as active front hood
- luggage compartment cover
- Height-adjustable luggage compartment floor
- Glove compartment with cooling option
- Rear window wiper with intermittent function
- Interior mirror automatically dimming
- ISOFIX mounting points on rear seats
- Front headrests
- Steering wheel: Multifunction steering wheel in leather, with paddle shifters
- front center armrest
- Fatigue detection
- Emergency braking assistant "Front Assist" (for automatic distance control ACC up to 210 km/h)
- Proactive occupant protection system in conjunction with "Front Assist" and "Side Assist"
- Radio accessories: Digital radio reception DAB+
- Wheels: Light alloy (4) "Karlstad" 6.5 J x 16
- Wheels: Tire Mobility Set
- Keyless start system without safe locking
- electromechanical power steering
- Seats: 3 individual seats in the 2nd row
- Seats: Folding tables on the backs of the front seats
- Seats: Comfort seats in the front
- Seats: Front seats are height-adjustable
- Lane change assistant "Side Assist" and parking assistant
- 12V power outlet on the rear of the center console
- Telephone interface
- First aid kit, warning triangle and high-visibility vest
- Warning tone and light for unfastened front seat belts
- Green thermal insulation glazing
- Black trim strips on the side windows



Extra equipment

- Anti-theft alarm system (with interior monitoring, backup horn and tow-away protection)
- Package: Assistance package "IQ.DRIVE" incl. IQ.LIGHT (DSG) (Dynamic Light Assist high beam control - Travel Assist, Lane Assist and Emergency Assist - LED headlights with LED daytime running lights and cornering lights - Dynamic headlight range control with dynamic cornering lights)
- Package: Mirror
- Wheels: Winter wheels (additional) LM "Karlstad" 6.5 J x 16 (4 light alloy wheels 6.5 J x 16 - on-board tools and jack - AirStop winter tires 205/60 R 16 H)
- Rear View reversing camera (displays the rear of the vehicle in real time on the radio/navigation system display)
- Keyless locking and starting system "Keyless Access" with safe locking mechanism
- Paint finish: Special color Pure White
- "Discover Media" navigation system including "Streaming & Internet" (radio)
- Package: Business Premium incl. Navigation (DSG) (Air Care Climatronic air conditioning - Lumbar support front, electrically adjustable on driver's side, massage function driver's side - Multifunction leather steering wheel with shift paddles - Cargo net partition - Automatically heated windshield washer nozzles front - Headlight cleaning system - Drawer under the right front seat - Microfleece seat center panels "ArtVelours" - Top comfort seats front - Heated front seats - Height-adjustable front seats, ergoActive seat on the driver's side - Washer fluid level warning light)
- "Comfort" telephone interface with inductive charging function (hands-free system)

Brief expert findings

Documents submitted	At the time of the inspection, the vehicle registration certificate Part 2 (title) was available, but the vehicle registration certificate Part 1 (document) was not. (Copy)
VIN comparison	The vehicle identification number (VIN) was read from the vehicle and its conformity with the submitted documents was confirmed by the undersigned during the inspection.
Inspection	The inspection conditions were sufficient for the assessment of the vehicle. Lifting equipment and/or a pit were available for examining the vehicle.
Test drive	No test drive/shunting maneuver was carried out during the inspection of the vehicle.
Engine function test	An engine test run was performed.
readiness to drive	The vehicle was roadworthy at the time of inspection.

Value reducing factors

No.	Component group	Description
1	Boot lid / rear door	Boot lid - dent(s) - Smooth repair work
2	Roof	Roof - dent(s) - Smooth repair work
3	Side panel - rear left side	Side panel - dent(s) - Smooth repair work
4	Bonnet	Bonnet - Stone chips - Paint

Wear and tear

No.	Component group	Description
1	Misc.	Main inspection - No evidence - No deduction

The vehicle shows signs of wear and tear commensurate with its age and use.



Order/Scope of Order

An order was placed to prepare a sales report for the described vehicle. This report includes the following:

- Description of key vehicle information
- Documentation of equipment features
(Delivery by third-party service providers)
- Documentation of damage, defects, missing parts
- Documentation of prior damage, unrepaired prior damage, repainting
- A brief visual or functional inspection of the equipment details, if possible.
(Functional testing of driver assistance systems is not included in the scope of services!)
- a photographic documentation of the vehicle

Basis for the order

This product is based on the guidelines for vehicle returns and valuations published by Alphabet Fleet GmbH. The expert makes the specific findings in each individual case objectively, within the framework of the prescribed standards, based on their own expertise.

The vehicle inspection takes place in a fully assembled, unassembled state.

Damage or defects that can only be detected during disassembly/diagnostic work or through further investigation remain within the realm of prognostic risk. An increased risk exists due to concealed defects caused by fraudulent misrepresentation and which were not identifiable by the expert.

Damage or defects resulting from normal use or wear and tear of the vehicle will be accepted in accordance with the applicable standard.

There was no explicit identification or monetary consideration of the expected features within the product.

Features which, in their nature and extent, slightly exceed normal use but do not constitute unacceptable damage, will be documented and indicated as signs of wear, if applicable.

Damage or defects that, according to the applicable standard, can no longer be attributed to normal use or wear and tear are listed under "Value Reducing Factors" in the product description.

Depending on the product specification, a monetary ID can be provided. If this takes place, the costs can be 100% d or pro rata depending on the vehicle's age and mileage.

Previous damages

No apparent prior damage that had been repaired could be found on the vehicle.

Comments

- Wartungshistorie gemäß Auftraggeber Informationen.



Figure 1: Diagonal front (left)



Figure 2: Diagonal front (right)



Figure 3: Diagonal rear (left)



Figure 4: Diagonal rear (right)



Figure 5: Interior - front



Figure 6: Interior - rear



Figure 7: Instrument cluster



Figure 8: Instrument panel



Figure 9: Interior 360° view



Figure 10: Cargo area



Figure 11: VIN



Figure 12: Mounted tyres



Figure 13: Documents



Figure 14: Additional tyres



Figure 15: Navigation



Figure 16: Misc.



Figure 17: Misc.



Figure 18: Misc.



Figure 19: Misc.



Figure 20: Misc.

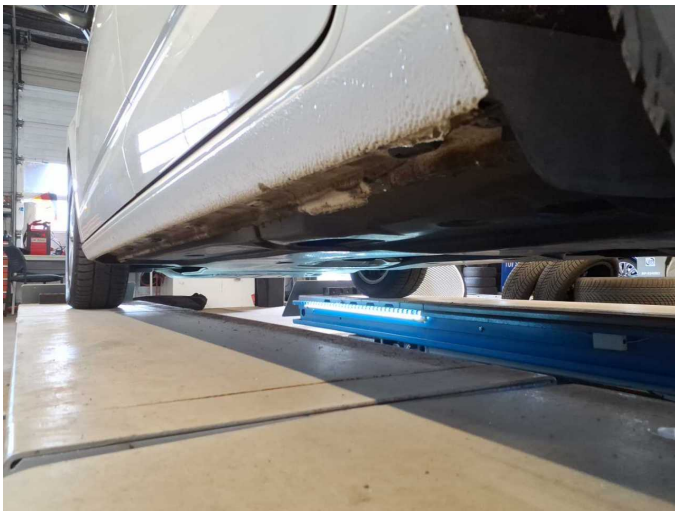


Figure 21: Misc.

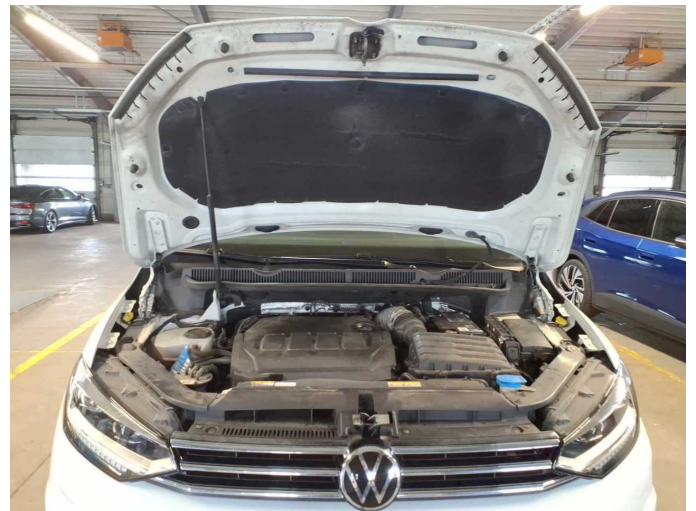


Figure 22: Misc.



Figure 23: Misc.



Figure 24: Misc.



Figure 25: Misc.



Figure 26: Misc.



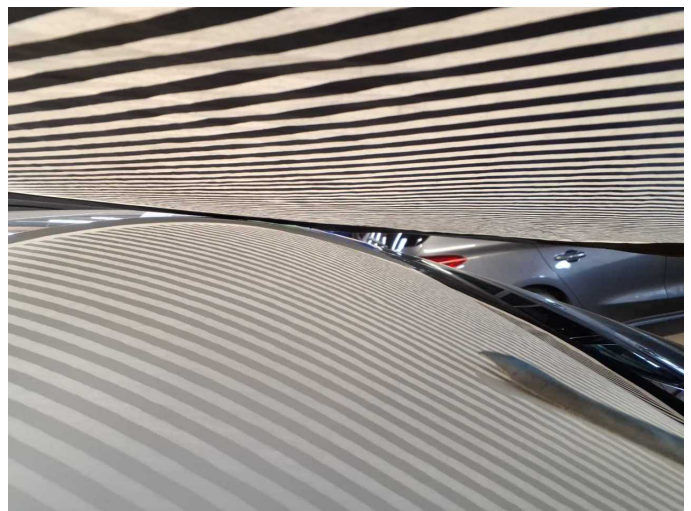
Damage 1: Boot lid / rear door: Boot lid - dent(s) - Smooth repair work



Damage 1: Boot lid / rear door: Boot lid - dent(s) - Smooth repair work



Damage 2: Roof: Roof - dent(s) - Smooth repair work



Damage 2: Roof: Roof - dent(s) - Smooth repair work



Damage 3: Side panel - rear left side: Side panel - dent(s) - Smooth repair work



Damage 3: Side panel - rear left side: Side panel - dent(s) - Smooth repair work



Damage 3: Side panel - rear left side: Side panel - dent(s) - Smooth repair work



Damage 3: Side panel - rear left side: Side panel - dent(s) - Smooth repair work



Damage 4: Bonnet: Bonnet - Stone chips - Paint



Damage 4: Bonnet: Bonnet - Stone chips - Paint



Damage 4: Bonnet: Bonnet - Stone chips - Paint



Damage 4: Bonnet: Bonnet - Stone chips - Paint



Damage 4: Bonnet: Bonnet - Stone chips - Paint



Damage 4: Bonnet: Bonnet - Stone chips - Paint



Wartungshistorie

(gemäß Auftraggeber Informationen)

Fahrgestellnummer: WVGZZZ1T1PW004801

Hersteller / Modell: VOLKSWAGEN VOLKSWAGEN Touran 2.0 TDI SCR DSG
Comfortline

Datum	KM-Stand	Beschreibung
08.05.2024	56.239	Motoröl b. Wartung; Ölfilter ern; Regelwartungsdienst; Wartung Sonstiges
10.11.2023	30.116	Regelwartungsdienst
31.08.2023	22.230	Motoröl b. Wartung; Ölfilter ern; Ölwechsel; Wartung Sonstiges