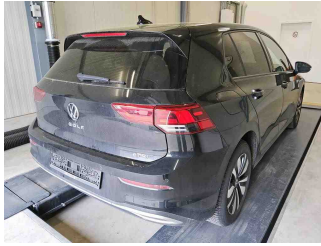


» Overview

Order number: 1002402592
Order completed: 09.04.2026 16:05
Report number: 10393999
VIN: WVVZZZCD9RW191122



Front Left 3/4



Rear Right 3/4



Mileage

» Vehicle Data

Vehicle category:	Passenger Car
Vehicle type:	Limousine
Make:	Volkswagen
Model:	Golf
Manufacturers and type code:	0603 / CLA
Date of first registration:	10.04.2024
Mileage:	17,484 km
Proof of mileage:	ReadOff
Exterior colour:	Grenadillschwarz Metallic
Roof colour:	Grenadillschwarz Metallic
Propulsion:	Front
Fuel:	Petrol
Engine size (cc):	1,000 ccm
Performance:	81 kW (111 PS)
Length:	
Height:	
Width:	
Permitted total weight:	
Wheelbase:	
Number of powered axles:	2
Cylinders:	3
Euronorm:	Euro 6
Number of doors:	5
Number of seats:	5
Gearbox:	Automatic 7-speed
Upholstery type:	Lining fabrics
Interior colour:	Grau-Titanschwarz-Silbergrau/ Titanschwarz/Schwarz/Perlgrau
Number of keys:	2

» Documents & Maintenance

Statutory inspection date:	
Registration certificate available:	No
Registration certificate received:	No
License plate:	None
Maintenance book:	Digital
Maintenance:	Not testable
Maintenance last date:	
Maintenance last mileage:	

"MOVE"

12-V outlet in luggage compartment
 2 LED reading lights in front and 2 in rear
 2 USB-C ports in the front, 2 USB-C charging sockets on the center console in rear, charging capacity up to 45 W
 3 head restraints in rear
 30-color ambient lighting
 3-cylinder SI engine 1.0 l
 3-cylinder SI engine 1.0 l TSI, 81 kW
 3-point seat belts for the outer rear seats
 3-point seat belts in front with height adjustment and seat belt pretensioners
 4 alloy wheels "Zurich" 7J x 16
 4 all-season tires 205/55 R16
 6+1 speakers
 7-speed automatic or DSG note: family EDF
 Activated carbon canister (Evaporative Emission Control System (EVAP))
 Adaptive Cruise Control ACC stop & go
 Adaptive Cruise Control ACC stop & go incl. speed limiter
 Additional el. heating
 Air Care Climatronic 3 zone automatic climate control w/ allergen filter, enhanced air filter a. controls in rear
 App-Connect Wireless for Apple CarPlay and Android Auto
 Auto-dimming interior rearview mirror
 Automatic headlight control with LED separate daytime running light and entry and exit lighting
 Automatically-heated washer nozzles in front
 Basic equipment variant
 Battery 420 A (70 Ah)
 Belt-driven integrated starter alternator 48 V 110 - 250 A
 Body-colored bumpers, air intake with chrome fin
 Body-colored exterior mirror housings and door handles
 Car2X "High" variant
 Carpet mats in front and rear
 Child seat anchors f. child seat system i-Size, 2x top tether and child seat anchors in front on front passenger side
 Chrome elements on power mirror and window regulator switches, chrome trims on the vents
 Comfort equipment
 Comfort seats in front
 Curtain airbags in front and rear, side airbags in front, center airbag
 Decorative inserts for special model
 Delivery "Autostadt Wolfsburg"
 Digital radio reception DAB+
 Disc brakes in front

Disc brakes in rear
 Diversity antenna for FM reception
 Door and side trim panel
 Driver alert system
 Driver and front passenger airbag with front passenger airbag deactivation
 Driving on the right
 Dual-clutch transmission DSG DQ200
 Dynamic headlight range control
 Electromechanical parking brake with Auto Hold function
 Electromechanical speed-sensitive power steering
 Electronic differential lock XDS
 Electronic engine sound
 Electronic immobilizer
 Electronic restriction of top speed
 Electronic Stability Control and electromechanical brake booster
 Elimination of nameplate for engine designation on luggage compartment lid
 Emergency call service, 10-year contract duration as of initial delivery, condition: mob. phone network available
 Emission standard EU6 AP
 Equipment options subset for Germany
 Ext. mirrors, power-adjustable and heated, with memory feature and front passenger ext. mirror lowering function
 Extended pedestrian protection
 Exterior mirrors: aspherical on driver side, convex on front passenger side
 First aid kit, warning triangle and safety vest
 Forward collision warning with warning and braking reaction to vehicles, pedestrians and cyclists
 Front center armrest, height- and longitudinally adjustable
 Front seats with height adjustment
 Front stabilizer bar
 Front-wheel drive
 Fuel system for fuel-injected SI engine
 Gearshift knob/handle in plastic
 Hatchback
 Headliner
 Heated front seats
 High-beam control Light Assist
 Highway light
 Hybrid drive system mHEV
 Illuminated door handle recesses
 Illuminated vanity mirrors in sun visors
 Initial standard fuel filling

Instrument cluster with electronic speedometer, odometer and trip odometer, tachometer	Shock absorption in front
Keyless Start without SAFELOCK	Special identification label for EC for M1 passenger vehicles
Laminated safety glass windshield, heat- and sound-insulating	Standard battery/alternator capacity
Lane keeping system Lane Assist	Standard climatic zones
Leather multi-function steering wheel, heated, with shift paddles	Standard curb weight range
LED headlamps	Standard engine starter
LED light unit in front footwell, selectable light color	Standard manufacturing sequence
LED rear combination lamps	Standard paint coating
Left-hand drive	Standard rear axle
LongLife Service Regime	Standard rear seat release
Lumbar supports in front	Standard roof
Manual in German (Germany)	Standard wheel bolts
Mobile phone interface with inductive charging feature	Start-stop system with regenerative braking
MOVE	Surround lighting with welcome light
Multi-color Digital Cockpit Pro, selection of different info profiles possible	Suspension range 04 installation control only, no requirement forecast
Multifunction camera	Tailgate/trunk lid unlocking from outside
No special purpose vehicle, standard equipment	Tire Mobility Set: 12-volt compressor and tire sealant
Non-folding front passenger seat backrest	Tire Pressure Monitoring System
Non-smoker's package: Storage compartment and 12-V outlet in front	Tool kit
Not hot country	Trailer hitch mechanically swiveling and power-detachable
Online service, with OCU, with head unit coding, without engine immobilizer interconnection	Transport protection film (minimum protection) with additional transport protection measures
Operating permit, alteration	Two-tone horn
Operating voltage 12 V	Type approval country Germany
Park distance control in front and rear	Unsplit rear bench seat, asymmetric split folding backrest, with center armrest
Part set without country-specific prescriptive standard	UWB-capable country and carrier frequency, 433.92 to 434.42 MHz
Pedals in brushed stainless steel	Vehicle class differentiation -5H0-
Preparation for subsequent activation: Navigation feature "Discover Media" incl. Streaming & Internet	Vehicles without special upgrade measures
Preparation for We Connect and We Connect Plus or VW Connect and VW Connect Plus	Visual and acoustic seat belt reminder, electric contact in front and rear
Privacy glass for rear side windows and rear window	Voice control
Radio	Weight range 5 installation control only, no requirement forecast
Radio "Ready 2 Discover" incl. "Streaming & Internet"	Wheelbase
Rain sensor	With emergency steering support with turn assist
Rear exhaust tailpipe (standard)	Without Adaptive Chassis Control
Rear floor panel module, type 1	Without additional decorative trims
Rear fog light on one side, back-up light on both sides	Without additional front underbody guard
Rear shock absorption, basic version 1	Without additional tires
Refrigerant R1234yf	Without alcohol interlock
Regional code " ECE " for radio	Without auxiliary heater/parking heater
Safety-optimized front head restraints	Without camera systems/accident sensors
Seat trim covers for special model	Without charging cable
Service indicator 30 000 km or 2 years (variable)	Without decals and emblems

- Without dynamic road sign display
- Without electric motor (hybrid)
- Without extended safety system
- Without fire extinguisher
- Without headlamp washer system, with washer fluid level indicator
- Without head-up display
- Without hill start assist/hill descent control/comfort driving assist
- Without lane change assist
- Without locking and starting systems
- Without mode 3 charging cable
- Without partition
- Without preparation for rotating beacon/siren combination
- Without preparation for two-way radio installation
- Without rear stabilizer bar
- Without roof rails
- Without seat ventilation/massage seat
- Without second battery
- Without special body measures
- Without speed limiter
- Without UN-ECE cybersecurity & software update

» Tyres

MOUNTED TYRES

Make	Location	Position	Type	Rim	Dimensions	Profile depth
Michelin	Front	Left	All season	Aluminium	205/55 R 16 94 V	6.0 mm
Michelin	Front	Right	All season	Aluminium	205/55 R 16 94 V	6.0 mm
Michelin	Rear	Left	All season	Aluminium	205/55 R 16 94 V	6.0 mm
Michelin	Rear	Right	All season	Aluminium	205/55 R 16 94 V	6.0 mm

Permitted: Yes

Roadworthy: Yes

SPARE/EMERGENCY TYRE & ACCESSORIES

Toolkit present: Yes

Repair kit present: Yes

Repair kit expiration date: 01.2028

Compressor present: Yes

No devaluation factors available

» Usage Damages

Nr	Location	Damage type	Repair type
1	Boot lid covering R	Scratch(es)	Acceptable

» Commercial devaluation

Known previous damages:	No
Previous damages detectable:	No
Repainting present:	No
Paint thickness measurement performed:	Yes - no abnormalities/deviations

PAINTTHICKNESS MEASUREMENT RESULTS

The measured values were in the usual range.

At least 3 measurements were carried out per component.

» Notes On The Assessment

Details of the assignment and the scope of the assessment:

The order was placed to prepare a condition report on the described vehicle.

The vehicle condition assessment was carried out in accordance with the order on the basis of the standards for vehicle assessments specified by the client. The expert makes the findings in the individual case on the basis of his own expertise and at his own expert discretion.

Vehicle identification:

WVWZZZCD9RW191122

VIN checked and matches documentation

Vehicle condition:

Average general condition

Inspection condition:

Sufficient

Lifting platform/lifting equipment used:

Yes

Testdrive carried out:

No

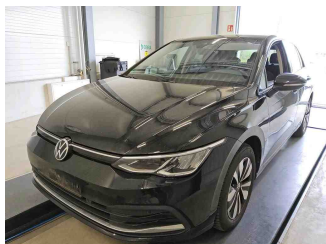
Engine test carried out:

Yes

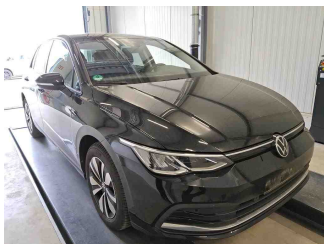
» **Remarks**

This copy was generated electronically. It is valid without an original signature.

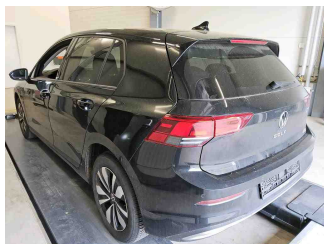
» Commercial Pictures



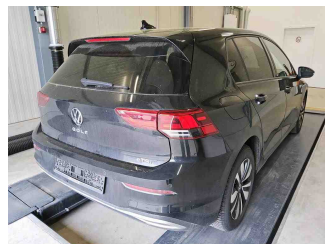
Front Left 3/4



Front Right 3/4



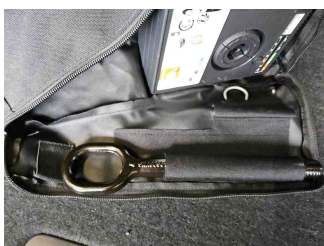
Rear Left 3/4



Rear Right 3/4



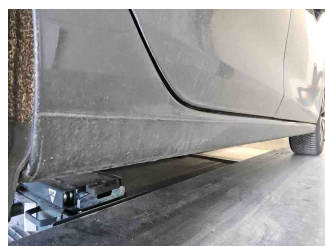
Mileage



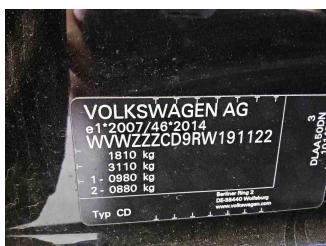
Tools



Sill outer L



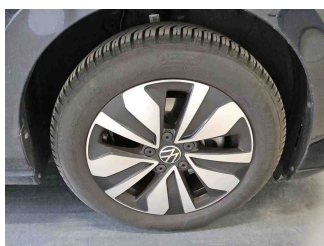
Sill outer R



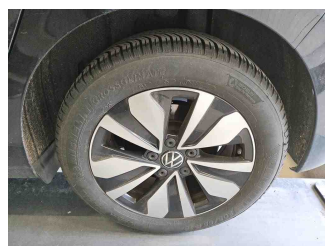
Chassis nr



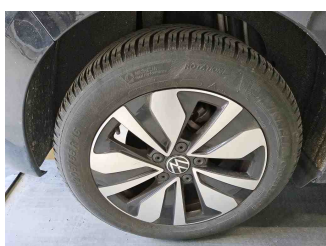
Wheel FL



Wheel FR



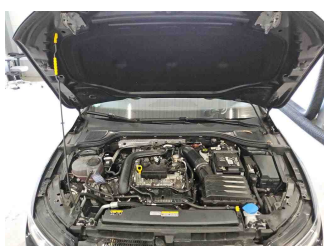
Wheel RL



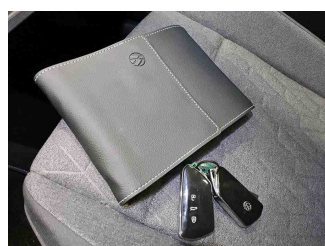
Wheel RR



Central console



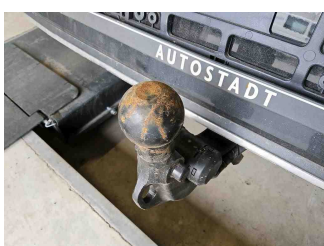
Engine compartment



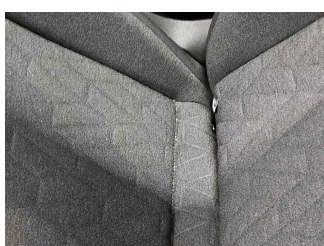
Documents



Interior arrangement



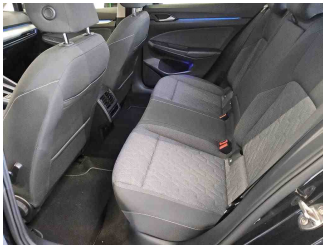
Towbar



History Maintenance



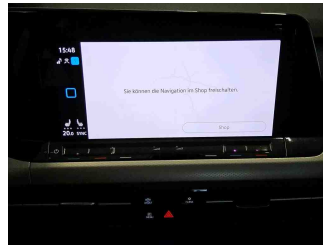
Interior - front



Interior - rear



Tirefit expiration date



GPS/Radio

» Devaluation Damages

USAGE DAMAGES

1 - Boot lid covering R - Scratch(es) - Acceptable

