

Expertise

Protocol number: 45425301
Order No. / Reference: 26215774
Inspection date: 7 May 2026

Manufacturer: Renault

Model: Trafic ENERGY dCi 120 L1H1 3,0t Komfort

VIN: VF1FL000666129284



Vehicle details

Manufacturer / Type / Model / Equipment

Renault Trafic ENERGY dCi 120 L1H1 3,0t Komfort

Vehicle Identification number VF1FL000666129284

Mileage (Read) 82,482 km

First registration 3 Dec 2020

Number of holders 1

Power / Engine displacement 88 kw / 1,997 ccm

Fuel type / Cylinder Diesel / 4

Gearbox / Number of gears Manual / 6

Type of drive Front drive

Type of vehicle Van

Colour / colour code Arktis-Weiß

Doors / Seats 3 / 3

Upholstery type Cloth

Colour of upholstery Black-Dark grey

readiness to drive Roadworthy



Vehicle details

Maintenance booklet / proof	digital proof / complete	Next maintenance in	21,900 km
Last service on / at	12/2024 at 64,284 km		
Key is / should be	2 / 2	FZG documents	ZB#2 (B) was available (copy), ZB#1 (S) was not available.
		Letter No.	FU209697
Previous damage / Accident	Detectable	Repainting	Detectable
Inspection conditions	sufficient	Lifting equipment / pit	yes
Test drive	Not performed	Engine function test	Performed
readiness to drive	Roadworthy		
Manufacturer key number/ type code number	3333 / BME 00433		
Emission standard	EURO6;WLTP;CI;PI/CI;N1 III, N2	fine dust sticker	
Permitted total weight	2,955 kg	Empty weight	

Tyres

Mounted tyres

#	Tyre size	Type of tyre	Manufacturer	Tread depth
1)	215/65 R16 109T	All-season tyres on Steel rim with wheel cover	Continental	4mm / 4mm
2)	215/65 R16 109T	All-season tyres on Steel rim with wheel cover	Hankook	3mm / 3mm

Replacement

Typ	Tyre size	Type of tyre	Manufacturer	Tread depth
Tirefit		Expiration date 09/2025		

Legend: Tread depth information for the left tire is listed first, for the right tire it is listed second on the axle in the direction of travel.



Equipment

Standard equipment

- Storage compartments in the doors (driver's and passenger's door)
- Airbag: Driver's side
- Exterior mirrors, electrically adjustable and heated (with wide-angle insert)
- On-board computer
- Electronic tachometer
- Electric front windows (with one-touch function)
- Halogen headlights with daytime running lights
- Rear door, opening angle 180°, without window
- Keycard Handsfree (Automatic unlocking of doors and/or tailgate upon approach - Starting at the touch of a button)
- Steering wheel adjustable in 2 ways (length, height)
- Engine: Start & Stop automatic
- Upholstery: Cloth
- Wheels: 16-inch steel rims with 205/65 R 16 tires
- Power steering
- Seats: Driver's seat "Comfort" adjustable in 3 ways (length, height, backrest tilt - with enhanced lateral support, lumbar support and center armrest)
- Heat-insulating glass
- ABS with EBV and brake assist (with automatic activation of the hazard warning lights during emergency braking)
- Automatic door locking after starting to drive
- Outdoor temperature display
- Turn signals in clear lens look
- Diesel particulate filter
- ESP with hill start assist, load detection and ASR
- Transmission: 6-speed manual transmission
- Glove compartment, closed (cooled in conjunction with air conditioning)
- Headrests (3) (height adjustable)
- Paint finish: Standard
- Mobility kit (instead of spare wheel)
- Pollen filter
- Radio installation with roof antenna
- Sliding door on the right, closed
- Seats: Passenger double seat
- Partition wall without windows
- Lashing eyes in the cargo area, on the lower side
- Electronic immobilizer
- Central locking with radio remote control (integrated into the key)

Extra equipment

- Airbag: Passenger airbag, deactivatable
- Package: Sound & Climate Package 1 DAB+ (front manual air conditioning - DAB+ MP3 tuner radio with integrated Bluetooth hands-free system, display, USB & AUX connection, steering wheel control satellite)
- Key: 3-button key (with separate unlocking of the driver's door)
- Rear parking aid (acoustic signal)
- Package: Mobile Office Package 1 (foldable double passenger seat with PC storage - closed partition without window with pass-through flap - wide-angle mirror)
- Tires: All-season tires
- Tablet Docking Station
- Würth installation

Retrofitted equipment

- Cargo area ventilation

Brief expert findings

Documents submitted	At the time of the inspection, the vehicle registration certificate Part 2 (title) was available, but the vehicle registration certificate Part 1 (document) was not. (Copy)
VIN comparison	The vehicle identification number (VIN) was read from the vehicle and its conformity with the submitted documents was confirmed by the undersigned during the inspection.
Inspection	The inspection conditions were sufficient for the assessment of the vehicle. Lifting equipment and/or a pit were available for examining the vehicle.
Test drive	No test drive/shunting maneuver was carried out during the inspection of the vehicle.
Engine function test	An engine test run was performed.
readiness to drive	The vehicle was roadworthy at the time of inspection.



Value reducing factors

No.	Component group	Description
1	Documents	Service book (1 und 2. Service überzogen)
2	Equipment	Tirefit filler - Expired - Replace
3	Door - front left side	Door handle - outside - Missing - Replace
4	Engine	Engine - Leaking - Perform diagnosis
5	Steering system	Steering wheel - Scratch(es) - Loss in value
6	Wheel / tyres	Tyre - right - Worn - Replace
7	Wing mirror - left side	Chassis - Broken / torn - Replace
8	Seat - front	Seat cover - left side (Und polster) - Broken / torn - Replace
9	Roof	Roof rail - left side (Orangenhaut) - Unprofessionally repaired - Repair and paint
10	Side panel - rear right side	Sill - Corrosion - Repair and paint
11	Boot lid / rear door	Rear door - left side - Dent / paintcoat damage - Repair and paint
12	Boot lid / rear door	Rear door - right side - Dent / paintcoat damage - Repair and paint
13	Body	Partition wall - Holes - Replace
14	Body	Body - Damage by hail - repair according to calculation

Wear and tear

No.	Component group	Description
1	Trim / covers	Door trim - front right side - Scratch(es) - No deduction
2	Wheel / tyres	Tyre - front (Über 4mm) - No deduction
3	Mudguard - right side	Mudguard - right side - Scratch(es) - No deduction
4	Headlight	Headlight - right side - Scratch(es) - No deduction
5	Sliding door, right	Sliding door - Scratch(es) - No deduction
6	Side panel - rear left side	Side panel - Scratch(es) - No deduction
7	Side panel - rear right side	Side panel - Scratch(es) - No deduction
8	Rear bumper	Rear bumper (unpainted) - Scratch(es) - No deduction
9	Front bumper	Front bumper (unpainted) - Scratch(es) - No deduction
10	Body	Body (Nachgerüstet) - Differs from the original configuration - No deduction

The vehicle shows signs of wear and tear commensurate with its age and use.

Previous damages

No.	Previous damage	Extent of damage (Net)
1	Side - left, Provided by user / customer, from 29 Nov 2023	2.407,47 €

Repainting

No.	Repainting
1	Side panel - rear left side, Professionally carried out, Invoice of repair done Non-existent
2	Door - front left side, Professionally carried out, Invoice of repair done Non-existent

Paint coat thickness measurement

Side panel - rear left side	255 µm	Door - front left side	175 µm
-----------------------------	--------	------------------------	--------



Order/Scope of Order

An order was placed to prepare a sales report for the described vehicle. This report includes the following:

- Description of key vehicle information
- Documentation of equipment features
(Delivery by third-party service providers)
- Documentation of damage, defects, missing parts
- Documentation of prior damage, unrepaired prior damage, repainting
- A brief visual or functional inspection of the equipment details, if possible.
(Functional testing of driver assistance systems is not included in the scope of services!)
- a photographic documentation of the vehicle

Basis for the order

This product is based on the guidelines for vehicle returns and valuations of light commercial vehicles published by Alphabet Fleet Management GmbH. The expert makes the specific findings in each individual case objectively, within the framework of the prescribed standards, based on their own expertise.

The vehicle inspection takes place in a fully assembled, unassembled state.

Damage or defects that can only be detected during disassembly/diagnostic work or through further investigation remain within the realm of prognostic risk. An increased risk exists due to concealed defects caused by fraudulent misrepresentation and which were not identifiable by the expert.

Damage or defects resulting from normal use or wear and tear of the vehicle will be accepted in accordance with the applicable standard.

There was no explicit identification or monetary consideration of the expected features within the product.

Features which, in their nature and extent, slightly exceed normal use but do not constitute unacceptable damage, will be documented and indicated as signs of wear, if applicable.

Damage or defects that, according to the applicable standard, can no longer be attributed to normal use or wear and tear are listed under "Value Reducing Factors" in the product description.

Depending on the product specification, a monetary ID can be provided. If this takes place, the costs can be 100% or pro rata depending on the vehicle's age and mileage.

Previous damages

According to available information previous damages were repaired at the vehicle. Traces of repairs, which allow conclusions about the area of repair, were not recognizable during the inspection.

Comments

Der kalkulierte Hagelschaden wurde nach bestem Wissen und Gewissen unter eingeschränkter Besichtigungsbedingung im demontagefreien Zustand erstellt. Es können aufgrund verdeckter Beschädigung, Mehrkosten und somit Abweichung der für den Schaden ausgewiesenen Reparaturkosten nicht ausgeschlossen werden.

Minderwerte höher als HEK



Figure 1: Diagonal front (left)



Figure 2: Diagonal front (right)



Figure 3: Diagonal rear (left)



Figure 4: Diagonal rear (right)



Figure 5: Interior - front



Figure 6: Interior - rear



Figure 7: Instrument cluster



Figure 8: Instrument panel



Figure 9: Interior 360° view



Figure 10: Cargo area



Figure 11: VIN



Figure 12: Mounted tyres



Figure 13: Documents



Figure 14: Misc.



Figure 15: Misc.



Figure 16: Misc.



Figure 17: Misc.



Figure 18: Misc.



Figure 19: Misc.



Figure 20: Misc.



Figure 21: Misc.



Figure 22: Misc.



Figure 23: Misc.



Figure 24: Misc.



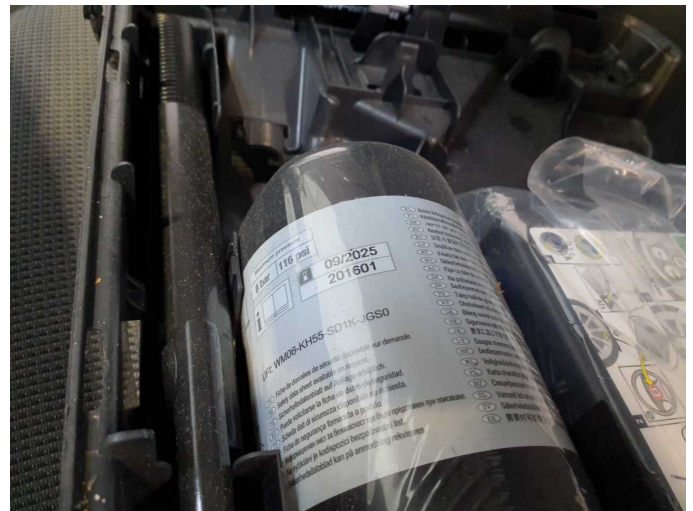
Figure 25: Misc.



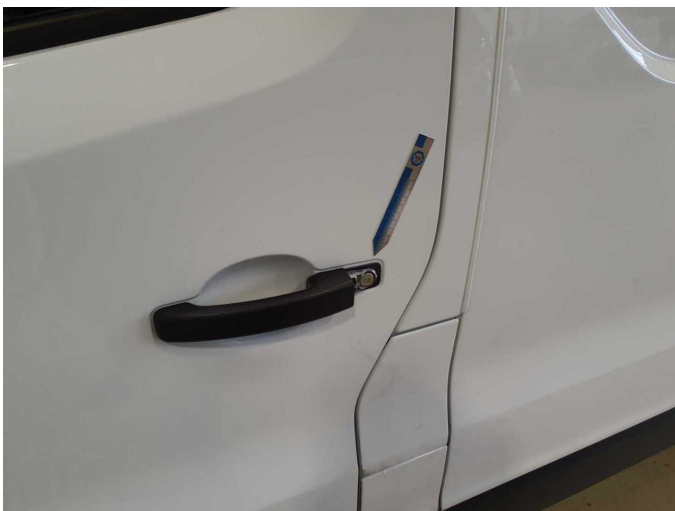
Figure 26: Misc.



Figure 27: Misc.



Damage 2: Equipment: Tirefit filler - Expired - Replace



Damage 3: Door - front left side: Door handle - outside - Missing - Replace



Damage 3: Door - front left side: Door handle - outside - Missing - Replace



Damage 4: Engine: Engine - Leaking - Perform diagnosis



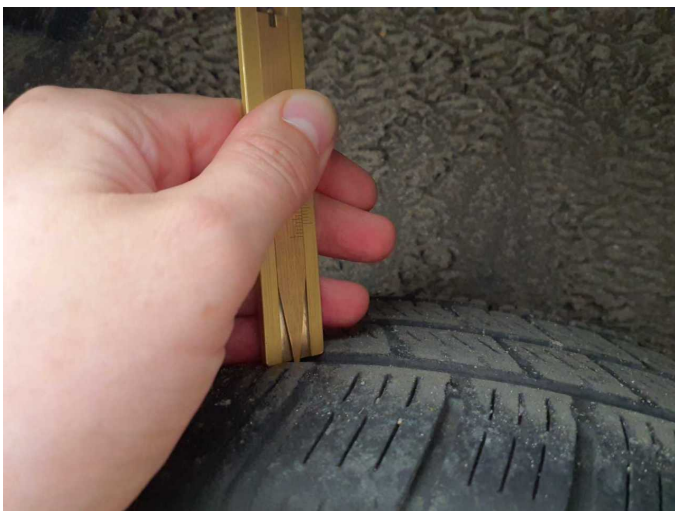
Damage 4: Engine: Engine - Leaking - Perform diagnosis



Damage 5: Steering system: Steering wheel - Scratch(es) - Loss in value



Damage 5: Steering system: Steering wheel - Scratch(es) - Loss in value



Damage 6: Wheel / tyres: Tyre - right - Worn - Replace



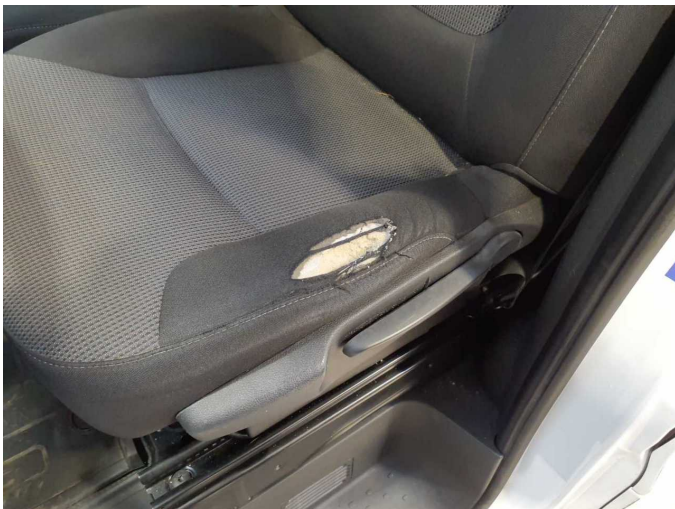
Damage 6: Wheel / tyres: Tyre - right - Worn - Replace



Damage 7: Wing mirror - left side: Chassis - Broken / torn - Replace



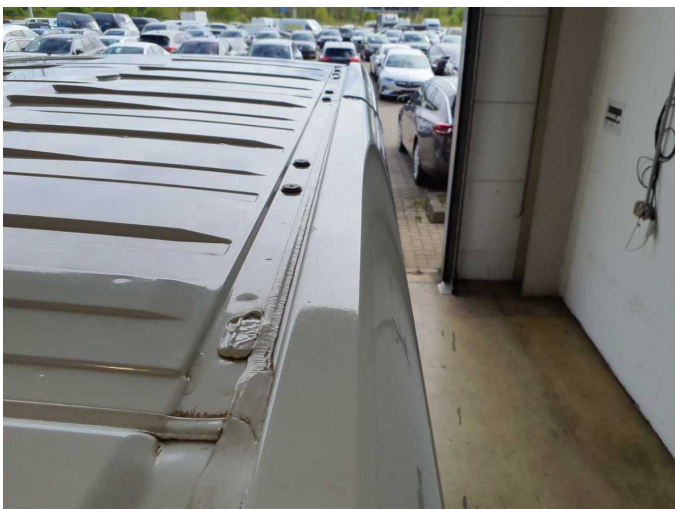
Damage 7: Wing mirror - left side: Chassis - Broken / torn - Replace



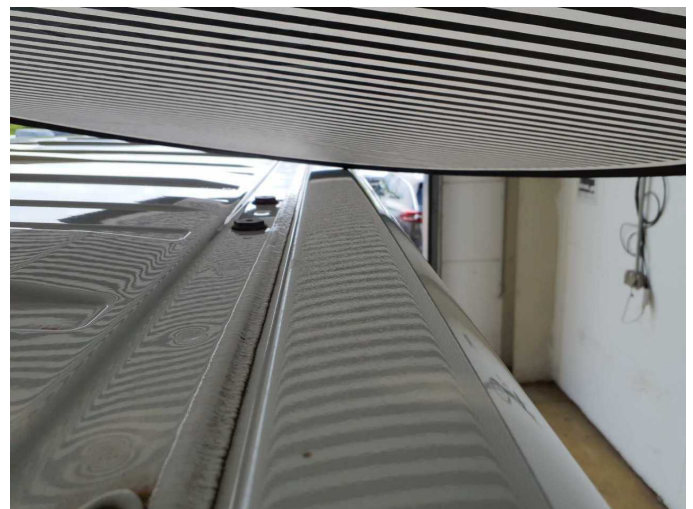
Damage 8: Seat - front: Seat cover - left side (Und polster) - Broken / torn - Replace



Damage 8: Seat - front: Seat cover - left side (Und polster) - Broken / torn - Replace



Damage 9: Roof: Roof rail - left side (Orangenhaut) - Unprofessionally repaired - Repair and paint



Damage 9: Roof: Roof rail - left side (Orangenhaut) - Unprofessionally repaired - Repair and paint



Damage 10: Side panel - rear right side: Sill - Corrosion - Repair and paint



Damage 10: Side panel - rear right side: Sill - Corrosion - Repair and paint



Damage 11: Boot lid / rear door: Rear door - left side - Dent / paintcoat damage - Repair and paint



Damage 11: Boot lid / rear door: Rear door - left side - Dent / paintcoat damage - Repair and paint



Damage 11: Boot lid / rear door: Rear door - left side - Dent / paintcoat damage - Repair and paint



Damage 12: Boot lid / rear door: Rear door - right side - Dent / paintcoat damage - Repair and paint



Damage 12: Boot lid / rear door: Rear door - right side - Dent / paintcoat damage - Repair and paint



Damage 12: Boot lid / rear door: Rear door - right side - Dent / paintcoat damage - Repair and paint



Damage 12: Boot lid / rear door: Rear door - right side - Dent / paintcoat damage - Repair and paint



Damage 13: Body: Partition wall - Holes - Replace



Damage 13: Body: Partition wall - Holes - Replace



Damage 13: Body: Partition wall - Holes - Replace



Damage 14: Body: Body - Damage by hail - repair according to calculation



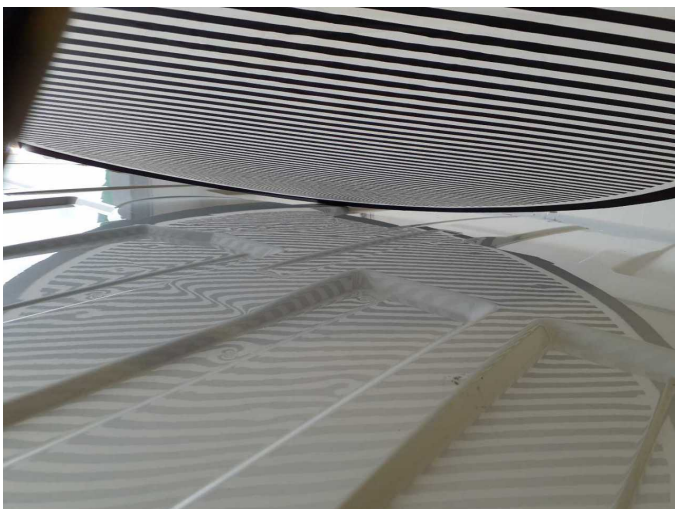
Damage 14: Body: Body - Damage by hail - repair according to calculation



Damage 14: Body: Body - Damage by hail - repair according to calculation



Damage 14: Body: Body - Damage by hail - repair according to calculation



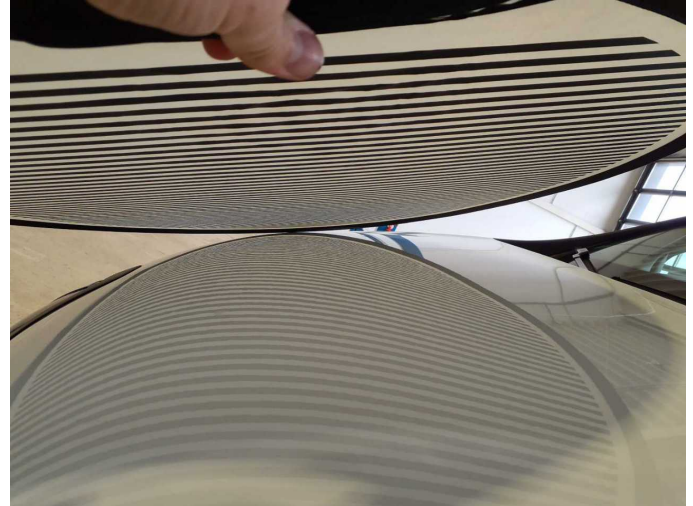
Damage 14: Body: Body - Damage by hail - repair according to calculation



Damage 14: Body: Body - Damage by hail - repair according to calculation



Damage 14: Body: Body - Damage by hail - repair according to calculation



Damage 14: Body: Body - Damage by hail - repair according to calculation



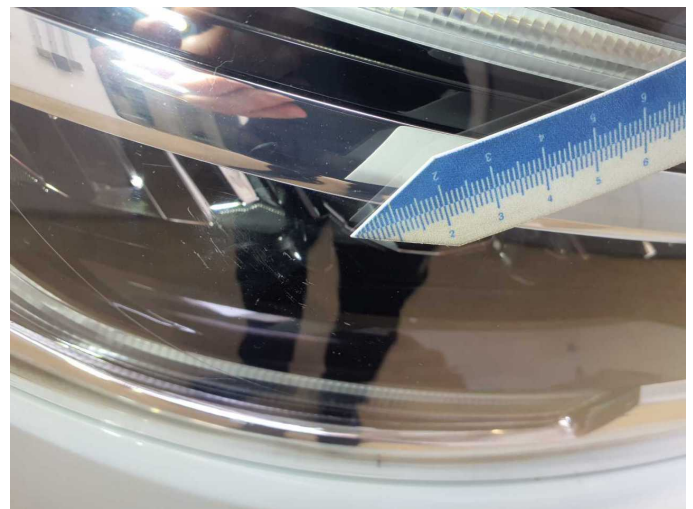
Wear and tear 3: Mudguard - right side: Mudguard - right side - Scratch(es) - No deduction



Wear and tear 3: Mudguard - right side: Mudguard - right side - Scratch(es) - No deduction



Wear and tear 4: Headlight: Headlight - right side - Scratch(es) - No deduction



Wear and tear 4: Headlight: Headlight - right side - Scratch(es) - No deduction



Wear and tear 5: Sliding door, right: Sliding door - Scratch(es) - No deduction



Wear and tear 5: Sliding door, right: Sliding door - Scratch(es) - No deduction



Wear and tear 6: Side panel - rear left side: Side panel - Scratch(es) - No deduction



Wear and tear 6: Side panel - rear left side: Side panel - Scratch(es) - No deduction



Wear and tear 7: Side panel - rear right side: Side panel - Scratch(es) - No deduction



Wear and tear 7: Side panel - rear right side: Side panel - Scratch(es) - No deduction



Wear and tear 7: Side panel - rear right side: Side panel - Scratch(es) - No deduction



Wear and tear 8: Rear bumper: Rear bumper (unpainted) - Scratch(es) - No deduction



Wear and tear 8: Rear bumper: Rear bumper (unpainted) - Scratch(es) - No deduction



Wear and tear 8: Rear bumper: Rear bumper (unpainted) - Scratch(es) - No deduction



Wear and tear 9: Front bumper: Front bumper (unpainted) - Scratch(es) - No deduction



Wear and tear 9: Front bumper: Front bumper (unpainted) - Scratch(es) - No deduction



Wear and tear 9: Front bumper: Front bumper (unpainted) - Scratch(es) - No deduction



Wear and tear 10: Body: Body (Nachgerüstet) - Differs from the original configuration - No deduction



Repainting 1: Side panel - rear left side



Repainting 1: Side panel - rear left side



Repainting 2: Door - front left side



Repainting 2: Door - front left side



Wartungshistorie

(gemäß Auftraggeber Informationen)

Fahrgestellnummer: VF1FL000666129284

Hersteller / Modell: RENAULT RENAULT Trafic ENERGY dCi 120 L1H1 3,0t Komfort

Datum	KM-Stand	Beschreibung
16.12.2024	64.284	Bremse Sonstiges; Bremsflüssigkeit; Bremsflüssigkeit ern; Bremsklötze hinten; Bremsklötze vorne; Bremsscheiben hinten; HU + AU; Kraftstofffilter ern; Luftfiltereinsatz ern; Motoröl b. Wartung; Ölfilter ern; Ölwechsel; Reparatur Sonstiges; Systemtest/Eigendiagnose; Wartung Sonstiges
12.04.2023	36.010	AU; Bremse Sonstiges; Getriebeöl ern/prüfen; Motoröl b. Wartung; Regelwartungsdienst; Systemtest/Eigendiagnose