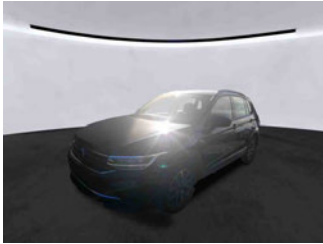


## » Overview

**Order number:** 1002430799  
**Order completed:** 04.05.2026 09:49  
**Report number:** 10540174  
**VIN:** WVGZZZ5NZNW526280



Front Left 3/4



Rear Right 3/4



Mileage

## » Vehicle Data

<b>Vehicle category:</b>	Passenger Car
<b>Vehicle type:</b>	SUV
<b>Make:</b>	Volkswagen
<b>Model:</b>	Tiguan
<b>Manufacturers and type code:</b>	0603 / BZG
<b>Date of first registration:</b>	25.01.2023
<b>Mileage:</b>	85,976 km
<b>Proof of mileage:</b>	ReadOff
<b>Exterior colour:</b>	Deep Black Perleffekt
<b>Roof colour:</b>	Deep Black Perleffekt
<b>Propulsion:</b>	Front
<b>Fuel:</b>	Diesel
<b>Engine size (cc):</b>	2,000 ccm
<b>Performance:</b>	110 kW (150 PS)
<b>Length:</b>	
<b>Height:</b>	
<b>Width:</b>	
<b>Permitted total weight:</b>	
<b>Wheelbase:</b>	
<b>Number of powered axles:</b>	2
<b>Cylinders:</b>	4
<b>Euronorm:</b>	Euro 6
<b>Number of doors:</b>	4
<b>Number of seats:</b>	5
<b>Gearbox:</b>	Automatic 7-speed
<b>Upholstery type:</b>	Lining fabrics
<b>Interior colour:</b>	Anthrazit - Titanschwarz/Titanschwarz/ Schwarz/Storm Grey
<b>Number of keys:</b>	2

## » Documents & Maintenance

<b>Statutory inspection date:</b>	01.2026
<b>Registration certificate available:</b>	Yes
<b>Registration certificate received:</b>	Yes
<b>License plate:</b>	None
<b>Maintenance book:</b>	Digital
<b>Maintenance:</b>	Not testable
<b>Maintenance last date:</b>	
<b>Maintenance last mileage:</b>	
<b>Remainder until next maintenance:</b>	508 Day(s)

12-V outlet in center console in rear and in luggage compartment	Digital radio reception DAB+
2 LED reading lights in front and 2 in rear	Disc brakes in front
2 USB-C ports in the front	Disc brakes in rear
3 head restraints in rear	Diversity antenna for FM reception
30-color ambient lighting	Door and side trim panel in foam film and woven fabric
3-point seat belt for center rear seat	Drawers under front seats
3-point seat belts in front with height adjustment and seat belt pretensioners	Driver alert system
3-point seat belts with seat belt pretensioners for the outer rear seats	Driver and front passenger airbag with front passenger airbag deactivation, including knee airbag on driver side
4 alloy wheels "Tulsa" 7J x 17, Dark Graphite, diamond-turned surface	Driving on the right
4-cylinder diesel engine 2.0 l	Dual-clutch transmission DSG DQ381
4-cylinder diesel engine 2.0 l TDI, 110 kW	Dynamic Road Sign Display
7-speed automatic transmission or dual-clutch transmission DSG, note: PR family EDF	Electric auxiliary air heater
8 speakers	Electromechanical parking brake with Auto Hold function
Adaptive Cruise Control ACC stop & go incl. speed limiter	Electromechanical speed-sensitive power steering
Air Care Climatronic 3 zone automatic climate control with enhanced air filter and controls in the rear	Electronic engine sound
Alternator 140 A	Electronic immobilizer
Ambience package	Electronic Stability Control w/ driver steering recommendation, ABS, ASR, EDL, EDTC and trailer stabilization
Aspherical exterior mirror on driver side	Elimination of nameplate for engine designation on luggage compartment lid
Auto-dimming interior rearview mirror	Emergency call service; no registration required, service is activated upon delivery
Automatic headlight control with LED separate daytime running light and Coming Home and Leaving Home feature	Emission standard EU6 AP
Autonomous Emergency Braking Front Assist (for Adaptive Cruise Control ACC up to 210 km/h)	Equipment options subset for Germany
Basic equipment variant	Exterior mirrors power-adjustable and heated
Battery 420 A (70 Ah)	First aid kit, warning triangle and safety vest
Black decorative trims	Folding trailer hitch, with electric release
Black roof rails	Front seats with height adjustment
Body-colored bumpers, black lower parts	Front stabilizer bar
Body-colored exterior mirror housings and door handles	Front-wheel drive
Carpet mats in front and rear	Fuel system for diesel engine
Carrier frequency 433.92 MHz-434.42 Mhz	Gearshift knob in leather
Center armrest in front	Green heat-insulating glass windows on sides and in rear
Central locking system without SAFELOCK, with radio remote control and 2 remote control folding keys	Hatchback
Chrome elements on the mirror switch and power window switches, door pulls; interior door handle in matte chrome	Headlight range control
Comfort equipment	Headliner
Comfort seats in front	High-beam control Light Assist
Completely folding front passenger seat backrest	Illuminated front scuff plates, in aluminum
Curtain airbag system for front and rear passengers incl. side airbags in front	Illuminated vanity mirrors in sun visors
Customized wiring harness, M 01	Initial standard fuel filling
Decorative inserts for dashboard and front door trim panels	Inserts of front seats and outer rear seats in fabric "Life"
	Instrument cluster with electronic speedometer, odometer and trip odometer, tachometer

ISOFIX anchorage points for mounting of 2 child seats on rear bench seat, also for i-Size child seats	Refrigerant R1234yf
Labels in German, French and Dutch	Regional code " ECE " for radio
Laminated safety glass windshield, heat- and sound-insulating	Remote unlocking for rear seat backrest
Lane keeping system Lane Assist	Right exterior mirror, convex
Leather multi-function steering wheel with shifting paddles	Safety-optimized front head restraints, longitudinally and height adjustable
LED headlamps	Service indicator 30 000 km or 2 years (variable)
LED license plate lighting	Shock absorption in front
Left-hand drive	Space- and weight-saving spare wheel
Light unit in front footwell	Space- and weight-saving spare wheel
LongLife Service Regime	Special identification label for EC for M1 passenger vehicles
Luggage compartment floor adjustable in 2 heights	Standard battery/alternator capacity
Luggage compartment lamp	Standard climatic zones
Lumbar supports in front	Standard paint coating
Manual in German (Germany)	Standard pedal cluster
Mobile phone interface	Standard wheel bolts
Multifunction camera	Start-stop system with regenerative braking
Multi-function display "Premium" with multi-color display	Steel winter wheels (additional), 6.5J x 17, AirStop® snow tires 215/65 R17 H
Navigation system "Discover Media" incl. Streaming & Internet	Suspension range 11 installation control only, no requirement forecast
Navigation system "Discover Media" incl. Streaming & Internet	Tailgate/trunk lid unlocking from outside
No special edition	Tire Pressure Monitoring System
No special purpose vehicle, standard equipment	Tires 215/65 R17, rolling resistance class A
Non-smoker's package: Storage compartment and 12 V outlet in front	Tires without specification of tire brand
Not hot country	Transport protection film (minimum protection) with additional transport protection measures
Online service, with OCU, with head unit coding, without engine immobilizer interconnection	Trims for alloy wheels
Operating permit, alteration	Two-tone horn
Operating voltage 12 V	Type approval country Germany
Overhead storage compartment	Vehicle class differentiation -550-
Park Distance Control - warning signals for obstacles in the front and rear	Vehicle tool kit and vehicle jack
Part set without country-specific prescriptive standard	Vehicles with special upgrade measures
Pedestrian Monitoring	Warning lamp for washer fluid level
Preparation for We Connect and We Connect Plus	Warning signal and warning lamp for front and rear seat belts not fastened
Proactive passenger protection system in combination with Front Assist	Weight range 10 installation control only, no requirement forecast
Radio	Wheelbase
Rain sensor	Winter wheels (additional) 4 steel wheels 6.5J x 17 AirStop® snow tires 215/65 R17 H
Rear bench seat asymm. split folding, longitudinally movable and folding with load-through hatch and center armrest	Without "Multimedia" in vehicle
Rear combination lamps	Without activated carbon canister with SCR
Rear exhaust tailpipe (standard)	Without Adaptive Chassis Control
Rear fog lamp	Without additional front underbody guard
Rear shock absorption, basic version 1	Without alternative drive system
Rear stabilizer bar	Without auxiliary heater/parking heater
Rear view camera system	Without charging cable

Without customized installation  
Without decals and emblems  
Without delivery equipment  
Without ECO function  
Without electric motor (hybrid)  
Without electronic steering column lock  
Without fire extinguisher  
Without folding table on front seat backrest  
Without front fog lamps  
Without headlamp washer system  
Without head-up display  
Without heated washer nozzles  
Without hill start assist/hill descent control/comfort driving assist  
Without lane change assist  
Without license plate carrier  
Without mode 3 charging cable  
Without partition  
Without rear spoiler  
Without roof insert (standard roof)  
Without seat heater  
Without seat ventilation/massage seat  
Without second battery  
Without special body measures  
Without tie down straps/net/pocket  
Without voice control  
Wolfsburg manufacturing sequence

## » Tyres

### MOUNTED TYRES

Make	Location	Position	Type	Rim	Dimensions	Profile depth
Hankook	Front	Left	Summer	Aluminium	215/65 R 17 99 V	4.0 mm
Hankook	Front	Right	Summer	Aluminium	215/65 R 17 99 V	4.0 mm
Hankook	Rear	Left	Summer	Aluminium	215/65 R 17 99 V	4.0 mm
Hankook	Rear	Right	Summer	Aluminium	215/65 R 17 99 V	4.0 mm

**Permitted:** Yes

**Roadworthy:** Yes

### UNMOUNTED TYRES

Make	Location	Position	Type	Rim	Dimensions	Profile depth
Pirelli			Winter	Steel	215/65 R 17 99 H	5.0 mm
Pirelli			Winter	Steel	215/65 R 17 99 H	5.0 mm
Pirelli			Winter	Steel	215/65 R 17 99 H	5.0 mm
Pirelli			Winter	Steel	215/65 R 17 99 H	5.0 mm

**Permitted:** Yes

**Roadworthy:** Yes

### SPARE/EMERGENCY TYRE & ACCESSORIES

**Spare tyre provided:** Yes

Make	Location	Position	Type	Rim	Dimensions	Profile depth
Other	Spare		Summer	Steel	145/85 R 18 103 M	4.0 mm

**Permitted:** Yes

**Roadworthy:** Yes

**Toolkit present:** Yes

**Jack present:** Yes

## » Devaluation Factors

Nr	Location	Damage type	Repair type
1	Display	Scratch(es)	Replace
2	Windscreen	Tear	Replace
3	Control Display	Residue	Replace
4	Door FL	Scratch(es)	Paint
5	Door RL	Scratch(es)	Paint
6	Bumper R	Scratch(es)	Paint
7	Preparationtime bodywork	Paint preparation	Execute
8	Boot cover	Broken	Replace
9	Wing trim RR	Scratch(es)	Replace Safety relevant damage
10	Boot lid covering R	Scratch(es)	Replace
11	Interior	Smell	Ozone treatment
12	MOT certificate	Expired	Renew
13	Inner door sill RR	Scratch(es)	Smart repair
14	Inner door sill FL	Scratch(es)	Smart repair
15	Inner door sill RL	Scratch(es)	Smart repair
16	Tailgate / Boot	Dent(s)	Paintless dent repair

## » Usage Damages

Nr	Location	Damage type	Repair type
1	Side wall RR	Dent(s)	Acceptable

## » Commercial devaluation

<b>Known previous damages:</b>	No
<b>Previous damages detectable:</b>	No
<b>Repainting present:</b>	No
<b>Paint thickness measurement performed:</b>	Yes - no abnormalities/deviations

### PAINTHICKNESS MEASUREMENT RESULTS

The measured values were in the usual range.

At least 3 measurements were carried out per component.

## » Notes On The Assessment

**Details of the assignment and the scope of the assessment:**

The order was placed to prepare a condition report on the described vehicle.

The vehicle condition assessment was carried out in accordance with the order on the basis of the standards for vehicle assessments specified by the client. The expert makes the findings in the individual case on the basis of his own expertise and at his own expert discretion.

**Vehicle identification:**

WVGZZZ5NZNW526280

VIN checked and matches documentation

**Vehicle condition:**

Dirty

**Inspection condition:**

Insufficient, Restricted

**Lifting platform/lifting equipment used:**

No

**Testdrive carried out:**

No

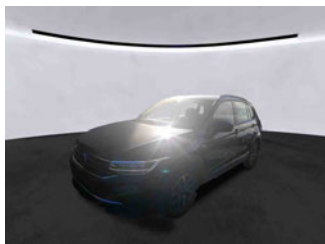
**Engine test carried out:**

Yes

» **Remarks**

This copy was generated electronically. It is valid without an original signature.

## » Commercial Pictures



Front Left 3/4



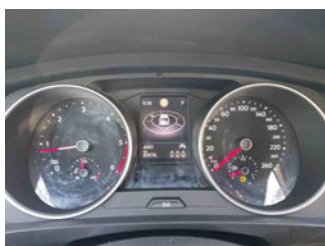
Front Right 3/4



Rear Left 3/4



Rear Right 3/4



Mileage



Tools



Sill outer L



Sill outer R



Chassis nr



Wheel FL



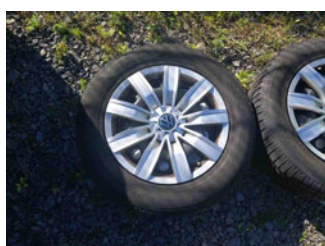
Wheel FR



Wheel RL



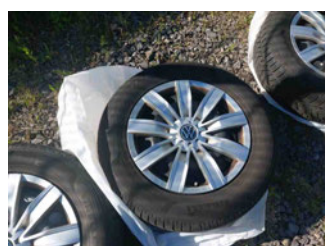
Wheel RR



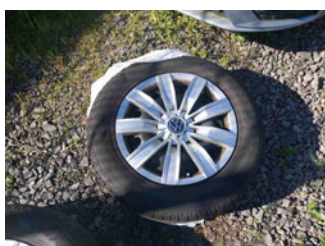
Additional wheel 1



Additional wheel 2



Additional wheel 3



Additional wheel 4



Spare wheel



Central console



Engine compartment



Documents



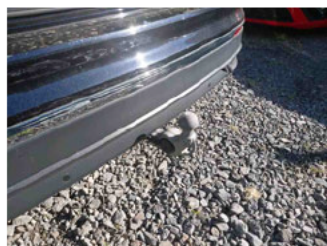
Interior arrangement



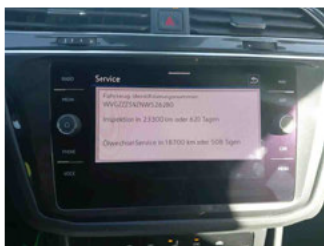
Registration Certificate



Tyres in vehicle



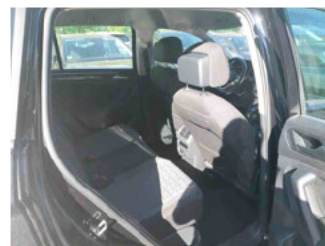
Towbar



History Maintenance



Interior - front



Interior - rear



GPS/Radio

## » Devaluation Damages

### DEVALUATION FACTORS

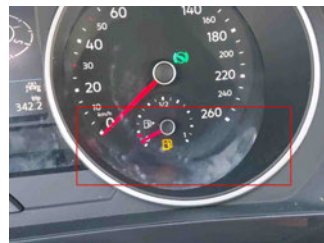
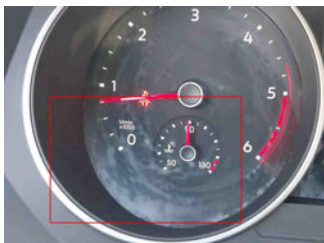
1 - Display - Scratch(es) - Replace



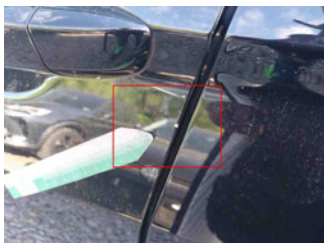
2 - Windscreen - Tear - Replace



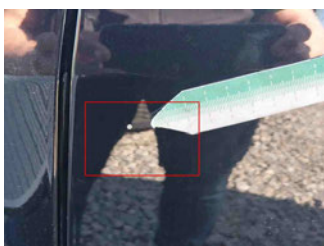
3 - Control Display - Residue - Replace



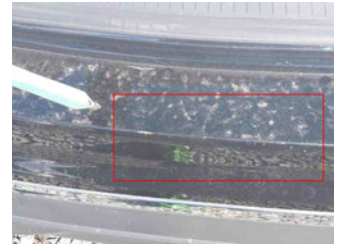
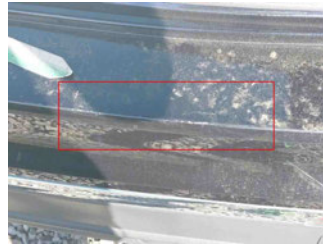
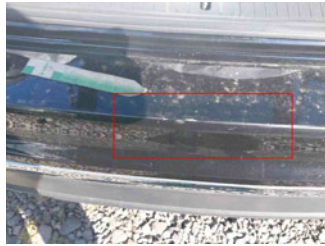
4 - Door FL - Scratch(es) - Paint



5 - Door RL - Scratch(es) - Paint

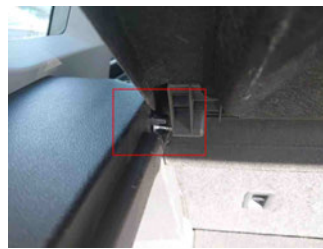
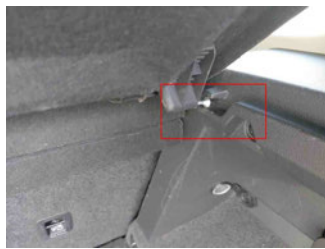


6 - Bumper R - Scratch(es) - Paint



7 - Preparationtime bodywork - Paint preparation - Execute

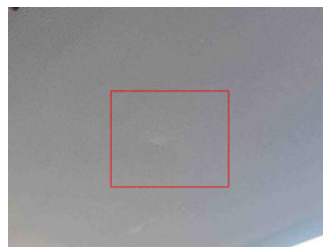
8 - Boot cover - Broken - Replace



9 - Wing trim RR - Scratch(es) - Replace  
Safety relevant damage

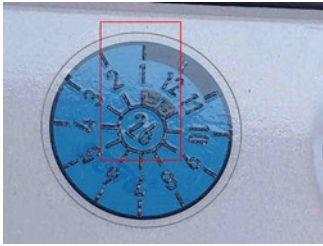


10 - Boot lid covering R - Scratch(es) - Replace



11 - Interior - Smell - Ozone treatment

12 - MOT certificate - Expired - Renew



13 - Inner door sill RR - Scratch(es) - Smart repair



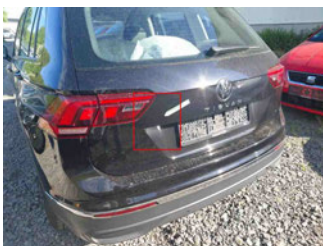
14 - Inner door sill FL - Scratch(es) - Smart repair



15 - Inner door sill RL - Scratch(es) - Smart repair



16 - Tailgate / Boot - Dent(s) - Paintless dent repair



## USAGE DAMAGES

1 - Side wall RR - Dent(s) - Acceptable

