

Expertise

Protocol number: 45255100
Order No. / Reference: 26323544
Inspection date: 28 Apr 2026

Manufacturer: Volkswagen

Model: Passat Variant 2.0 TDI SCR DSG Business

VIN: WVVZZZ3CZPE036830



Vehicle details

Manufacturer / Type / Model / Equipment

Volkswagen Passat Variant 2.0 TDI SCR DSG Business

Vehicle Identification number WVVZZZ3CZPE036830

Mileage (Read) 169,654 km

First registration 8 Mar 2023

Number of holders 1

Power / Engine displacement 110 kw / 1,968 ccm

Fuel type / Cylinder Diesel / 4

Gearbox / Number of gears Automatic / 7

Type of drive Front drive

Type of vehicle Station wagon

Colour / colour code Deep Black Perleffekt
(C9X)

Doors / Seats 5 / 4

Upholstery type Cloth

Colour of upholstery Black-Dark grey



Vehicle details

| | | | |
|--|------------------------------|--------------------------------|--|
| Maintenance booklet / proof | digital proof / complete | Next maintenance in | 3,200 km |
| Last service on / at | 10/2025 at 142,781 km | | |
| Key is / should be | 2 / 2 | FZG documents | ZB#2 (B) was available (copy), ZB#1 (S) was not available. |
| | | Letter No. | GS354936 |
| Previous damage / Accident | None detectable | Repainting | None detectable |
| Inspection conditions | sufficient | Lifting equipment / pit | yes |
| Test drive | Not performed | Engine function test | Performed |
| Manufacturer key number/ type code number | 0603 / BQS 04360 | | |
| Emission standard | EURO6;WLTP;AP;PI/CI; M, N1 I | fine dust sticker | |
| Permitted total weight | 2,200 kg | Empty weight | |

Tyres

Mounted tyres

| # | Tyre size | Type of tyre | Manufacturer | Tread depth |
|----|----------------|--|--------------|-------------|
| 1) | 215/60 R16 95H | Winter tyres on Steel rim with wheel cover | Dunlop | 6mm / 6mm |
| 2) | 215/60 R16 95H | Winter tyres on Steel rim with wheel cover | Dunlop | 7mm / 7mm |

Additional tyres

| # | Tyre size | Type of tyre | Manufacturer | Tread depth |
|----|----------------|-----------------------------|--------------|-------------|
| 1) | 215/60 R16 95V | Summer tyres on Light alloy | Continental | 4mm / 4mm |
| 2) | 215/60 R16 95V | Summer tyres on Light alloy | Continental | 5mm / 5mm |

Replacement

| Typ | Tyre size | Type of tyre | Manufacturer | Tread depth |
|---------|-----------|-------------------------|--------------|-------------|
| Tirefit | | Expiration date 11/2026 | | |

Legend: Tread depth information for the left tire is listed first, for the right tire it is listed second on the axle in the direction of travel.



Equipment

Standard equipment

- Airbag for driver and front passenger
- Anti-lock braking system (ABS)
- Adaptive Cruise Control (ACC) "stop & go", including speed limiter
- Cup holders (2) front
- third brake light
- black roof rails
- Tachometer
- Entry/warning lights in LED technology in the front doors
- Electronic parking brake including auto-hold function
- Automatic headlight control
- Remote release for luggage compartment lid
- Pedestrian detection
- Adjustable luggage compartment floor
- Rear window heated
- Interior lights with delayed shut-off and dimming function
- Air conditioning
- Front headrests
- LED taillights
- Headlight range control
- "Premium" multifunction display with multicolor screen
- Fatigue detection
- Non-smoking version
- Emergency call service
- Package: Light and Sight Package "Plus"
- Proactive occupant protection system in conjunction with "Front Assist"
- Tire pressure monitoring system (passive)
- Rear bench seat, undivided, backrest asymmetrically split and foldable, with center armrest
- Power steering
- Seats: Comfort seats in the front
- Lane keeping assistant "Lane Assist"
- 12V power outlet on the rear of the center console
- Textile floor mats
- Warning tone and light for unfastened seat belts front and rear

Extra equipment

- Towbar, foldable (with electric release)
- Anti-theft alarm system (interior monitoring, backup horn and tow-away protection - illuminated make-up mirror in the sun visors, extendable sun visors)
- Paint finish: Pearl effect

- Airbag, head airbag system for front and rear passengers
- App-Connect
- Electrically adjustable and heated exterior mirrors, ambient lighting
- Hill start assist
- Chrome trim on the side windows
- Diesel particulate filter
- Parking aid - warning signals for obstacles in the front and rear area
- Electronic stability program and electromechanical brake booster
- Windscreen made of laminated safety glass, heat and sound insulating
- Transmission: 7-speed DSG
- rear window wiper
- ISOFIX mounting points
- Rear headrests (3)
- LED fog lights and cornering lights
- LED headlights with daytime running lights
- Front center armrest, height and length adjustable, with storage box
- Mesh partition
- Emergency braking assistant "Front Assist" (for automatic distance control ACC up to 210 km/h)
- Upholstery: "Business" fabric
- Radio "Composition"
- Radio accessories: Digital radio reception DAB+
- Wheels: Tire Mobility Set
- Gearshift knob in leather
- Keyless start system without safe locking
- Seat belts: Three-point automatic seat belt
- Seats: Lumbar support in the front
- Start-stop system
- Telephone interface
- First aid kit, warning triangle and high-visibility vest
- Electronic immobilizer
- Central locking with remote control

- Roof headliner in titanium black
- Removable luggage compartment protective mat (back of the rear seat backrest with black rubber coating)
- Head-up display
- Steering wheel: Multifunction leather steering wheel, heated, with paddle shifters



- Navigation system "Discover Pro" incl. "Streaming & Internet" (4x20 Watt App-Con. Wireless Digital Cockpit. Operation with proximity sensor. Dual tuner with phase differentiation. DAB. Vehicle menu. Speed. Volume adjustment. Gestures. 32 GB SSD hard drive. Map 2D display. Tone control. 3-way TFT display with touchscreen. MP3. Navigation for Europe. Voice control. Telephone contact. Address. Telephone interface. "Comfort" with inductive charging. 2 USB iPod/iPhone. Traffic sign recognition. "We Connect Plus" incl. "We Connect". Dynamic route guidance. RDS. TMC tuner. Mobile key pre-activation, vehicle via smartphone.)
- Package: "Easy Open & Close" package including safe locking (extendable and removable luggage compartment cover with electric opening - tailgate with sensor-controlled opening and closing, with remote unlocking - keyless locking and starting system "Keyless Access" with safe locking)
- Proactive occupant protection system and lane change assistant "Side Assist" (Proactive occupant protection system in conjunction with "Front Assist" and "Side Assist" - lane change assistant "Side Assist" and parking assistant)
- Sunshade roller blind on the rear door windows
- Voice control
- Surround view "Area View" incl. reversing camera "Rear View" with Business Premium (displays the vehicle's surroundings in real time on the radio/navigation system display - assists when exiting blind driveways or side streets, when parking in and out of parking spaces, when maneuvering with a trailer or when driving off-road)
- Package: "Business Premium" package incl. navigation (from Business trim level) (2 USB-C ports in the front, USB-C charging socket in the rear, 230V socket, App-Connect incl. wireless, Apple CarPlay, Android Auto, "Travel Assist" driver assistance system and "Lane Assist" lane keeping assist system, Air Care Climatronic with 3-zone temperature control, active combination filter and rear controls, lumbar support in the front, electric on the driver's side, massage function on the driver's side, "Rear View" reversing camera, heated windshield washer nozzles, Comfort telephone interface, inductive charging function, heated front seats)
- Package: Ambient lighting "Plus" (multicoloured ambient lighting - LED entry/warning lights in all doors - interior lights with switch-off delay and dimming function, 2 LED reading lights each in the front and rear)
- Package: Assistance P. IQ.DRIVE LIGHT. in conjunction with BP PF1
- Wheels: 4 alloy wheels "Aragon" 6.5 J x 16 (tires 215/60 R 16 - wheel locks with enhanced theft protection)
- Rear side windows and rear window tinted
- Seats: ergoComfort seat with 14-way electric adjustment, memory and massage on driver's side in conjunction with Business Package (electrically folding exterior mirrors, auto-dimming on driver's side, ambient lighting and memory - electrically adjustable lumbar support in front, massage function on driver's side - electrically adjustable front seats, ergoComfort seat on driver's side, with memory function and comfort entry)

Brief expert findings

| | |
|----------------------|--|
| Documents submitted | At the time of the inspection, the vehicle registration certificate Part 2 (title) was available, but the vehicle registration certificate Part 1 (document) was not. (Copy) |
| VIN comparison | The vehicle identification number (VIN) was read from the vehicle and its conformity with the submitted documents was confirmed by the undersigned during the inspection. |
| Inspection | The inspection conditions were sufficient for the assessment of the vehicle. Lifting equipment and/or a pit were available for examining the vehicle. |
| Test drive | No test drive/shunting maneuver was carried out during the inspection of the vehicle. |
| Engine function test | An engine test run was performed. |

Value reducing factors

| No. | Component group | Description |
|-----|------------------------------|--|
| 1 | Equipment | Vehicle key (Batterie wechseln) - Electrical fault - Perform diagnosis |
| 2 | Rear bumper | Rear bumper - Scratched - Smart repair |
| 3 | 2nd wheel set | 1 alloy rim - Scratch(es) - Loss in value |
| 4 | Side panel - rear right side | Side panel - Dent / paintcoat damage - Paint |
| 5 | Door - front right side | Door - Scratch(es) - Paint |

Wear and tear

| No. | Component group | Description |
|-----|-----------------|---|
| 1 | Front bumper | Front bumper - Stone chips - No deduction |



| No. | Component group | Description |
|-----|-----------------------------|---|
| 2 | Bonnet | Bonnet - Stone chips - No deduction |
| 3 | Side panel - rear left side | Side panel - Stone chips - No deduction |
| 4 | Door - front left side | Door edge - Scratched - No deduction |
| 5 | Boot lid / rear door | Boot lid - dent(s) - No deduction |

The vehicle shows signs of wear and tear commensurate with its age and use.

Order/Scope of Order

An order was placed to prepare a sales report for the described vehicle. This report includes the following:

- Description of key vehicle information
- Documentation of equipment features
(Delivery by third-party service providers)
- Documentation of damage, defects, missing parts
- Documentation of prior damage, unrepaired prior damage, repainting
- A brief visual or functional inspection of the equipment details, if possible.
(Functional testing of driver assistance systems is not included in the scope of services!)
- a photographic documentation of the vehicle

Basis for the order

This product is based on the guidelines for vehicle returns and valuations published by Alphabet Fleet GmbH. The expert makes the specific findings in each individual case objectively, within the framework of the prescribed standards, based on their own expertise.

The vehicle inspection takes place in a fully assembled, unassembled state.

Damage or defects that can only be detected during disassembly/diagnostic work or through further investigation remain within the realm of prognostic risk. An increased risk exists due to concealed defects caused by fraudulent misrepresentation and which were not identifiable by the expert.

Damage or defects resulting from normal use or wear and tear of the vehicle will be accepted in accordance with the applicable standard.

There was no explicit identification or monetary consideration of the expected features within the product.

Features which, in their nature and extent, slightly exceed normal use but do not constitute unacceptable damage, will be documented and indicated as signs of wear, if applicable.

Damage or defects that, according to the applicable standard, can no longer be attributed to normal use or wear and tear are listed under "Value Reducing Factors" in the product description.

Depending on the product specification, a monetary ID can be provided. If this takes place, the costs can be 100% d or pro rata depending on the vehicle's age and mileage.

Previous damages

No apparent prior damage that had been repaired could be found on the vehicle.

Comments

Der montierte Winterradsatz ist kein Bestandteil der Ausstattung.



Figure 1: Diagonal front (left)



Figure 2: Diagonal front (right)



Figure 3: Diagonal rear (left)



Figure 4: Diagonal rear (right)



Figure 5: Interior - front



Figure 6: Interior - rear



Figure 7: Instrument cluster



Figure 8: Instrument panel



Figure 9: Interior 360° view



Figure 10: Cargo area

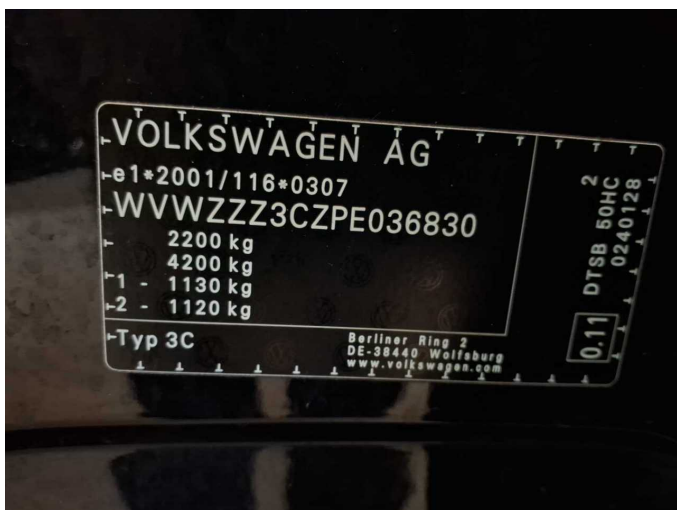


Figure 11: VIN



Figure 12: Mounted tyres



Figure 13: Documents

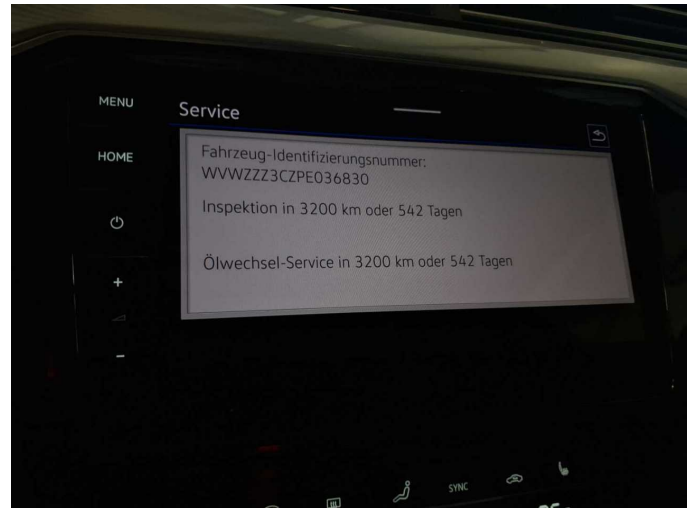


Figure 14: Documents

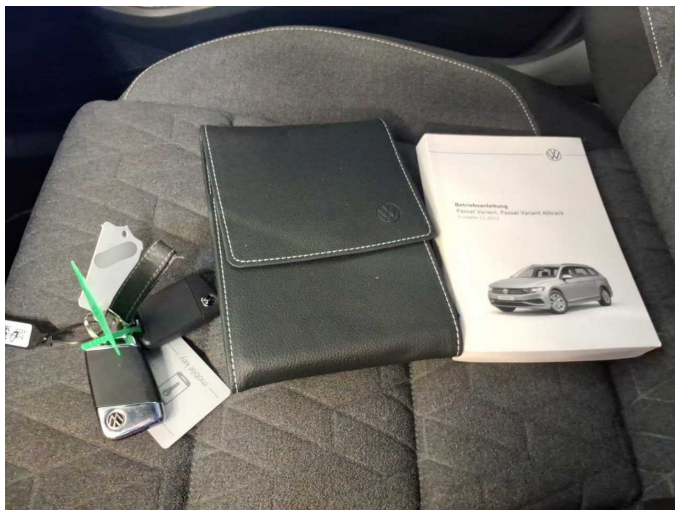


Figure 15: Documents



Figure 16: Additional tyres

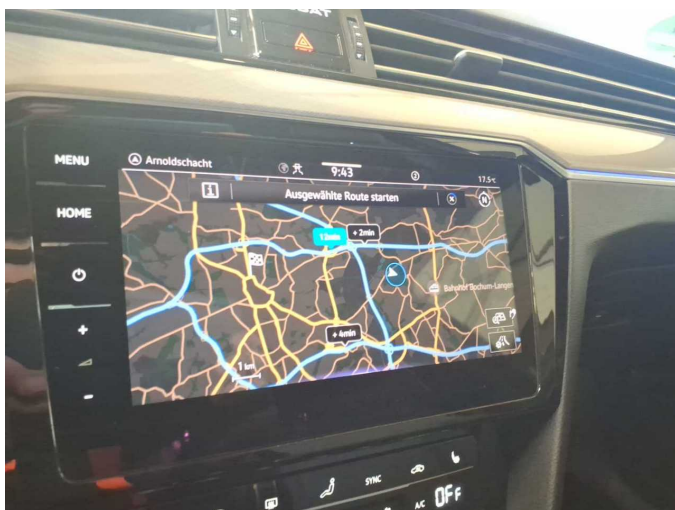


Figure 17: Navigation



Figure 18: Misc.



Figure 19: Misc.



Figure 20: Misc.



Figure 21: Misc.



Figure 22: Misc.



Figure 23: Misc.

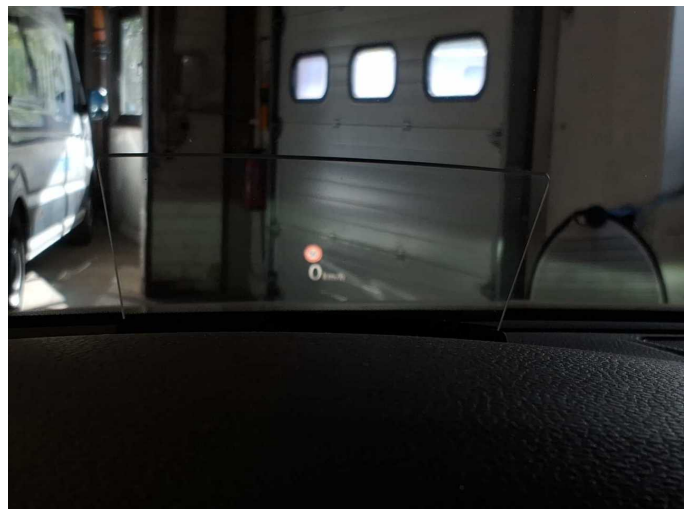


Figure 24: Misc.



Figure 25: Misc.



Figure 26: Misc.



Figure 27: Misc.



Figure 28: Misc.

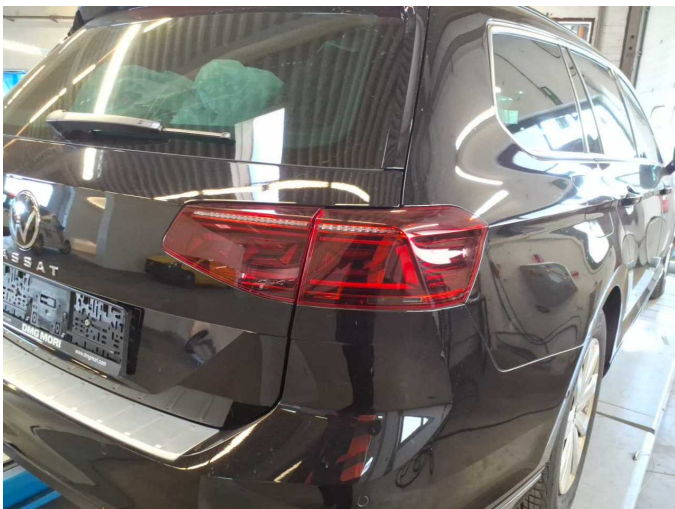


Figure 29: Misc.

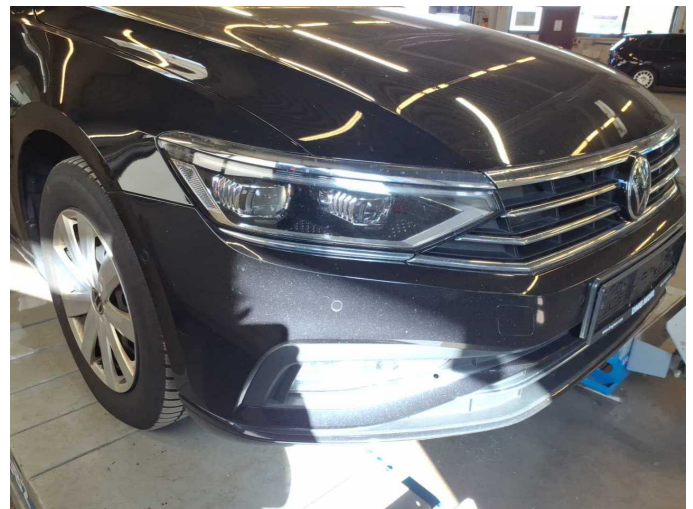


Figure 30: Misc.



Figure 31: Misc.



Figure 32: Misc.



Figure 33: Misc.



Figure 34: Misc.



Figure 35: Misc.

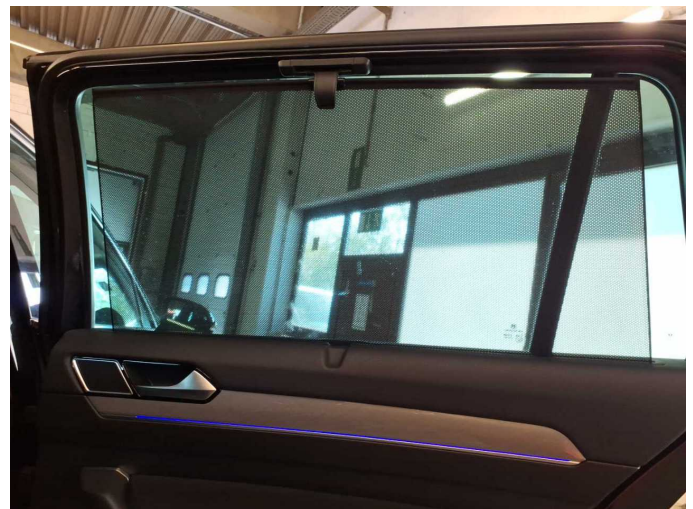


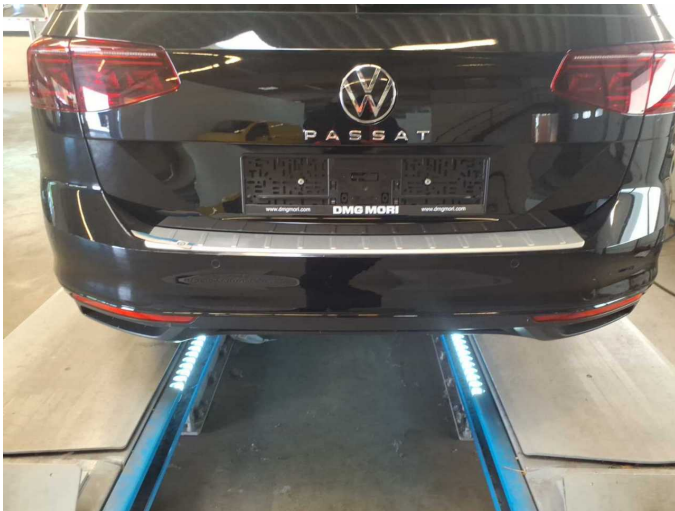
Figure 36: Misc.



Figure 37: Misc.



Damage 1: Equipment: Vehicle key (Batterie wechseln) - Electrical fault - Perform diagnosis



Damage 2: Rear bumper: Rear bumper - Scratched - Smart repair



Damage 2: Rear bumper: Rear bumper - Scratched - Smart repair



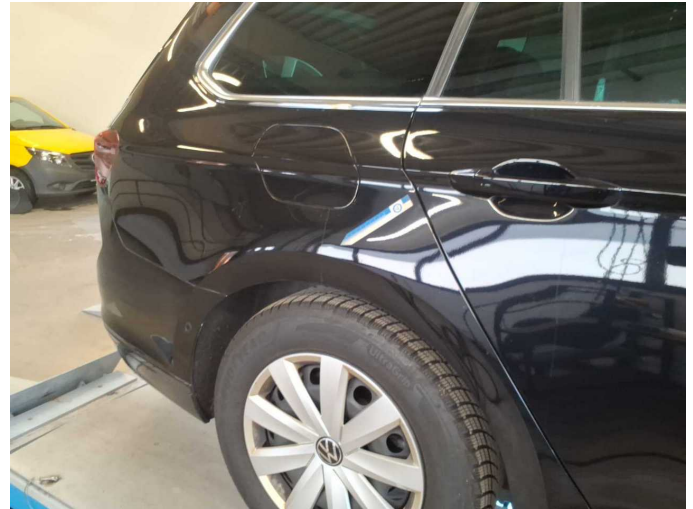
Damage 2: Rear bumper: Rear bumper - Scratched - Smart repair



Damage 3: 2nd wheel set: 1 alloy rim - Scratch(es) - Loss in value



Damage 3: 2nd wheel set: 1 alloy rim - Scratch(es) - Loss in value



Damage 4: Side panel - rear right side: Side panel - Dent / paintcoat damage - Paint



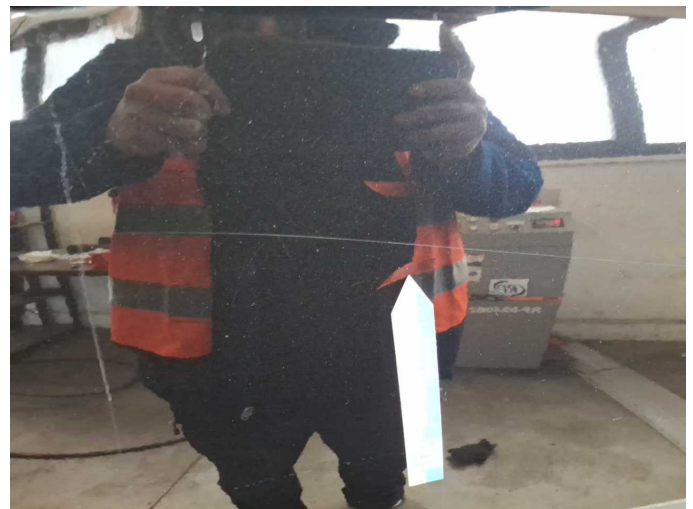
Damage 4: Side panel - rear right side: Side panel - Dent / paintcoat damage - Paint



Damage 4: Side panel - rear right side: Side panel - Dent / paintcoat damage - Paint



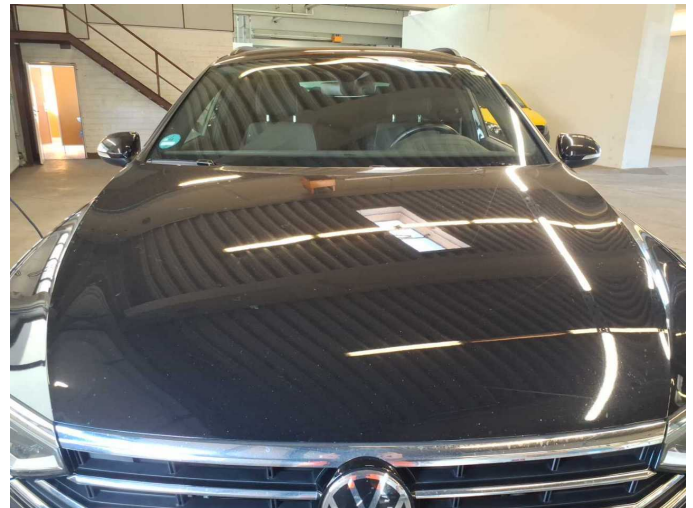
Damage 5: Door - front right side: Door - Scratch(es) - Paint



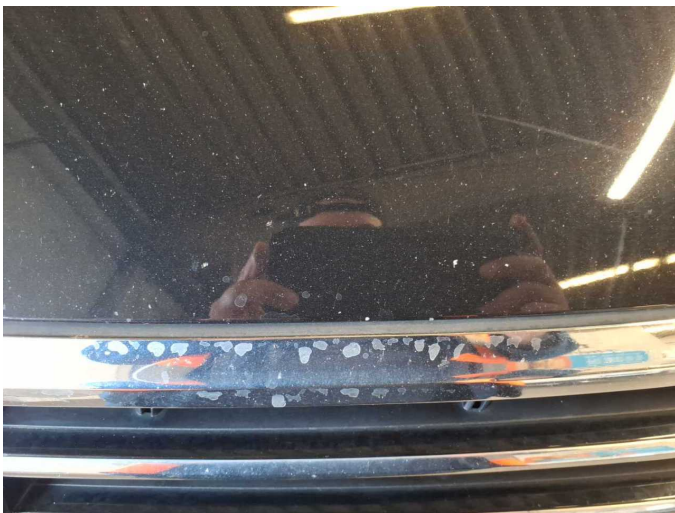
Damage 5: Door - front right side: Door - Scratch(es) - Paint



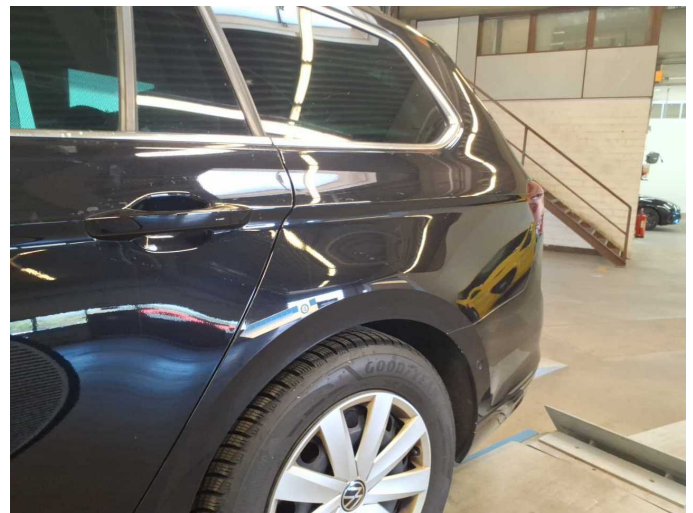
Wear and tear 1: Front bumper: Front bumper - Stone chips - No deduction



Wear and tear 2: Bonnet: Bonnet - Stone chips - No deduction



Wear and tear 2: Bonnet: Bonnet - Stone chips - No deduction



Wear and tear 3: Side panel - rear left side: Side panel - Stone chips - No deduction



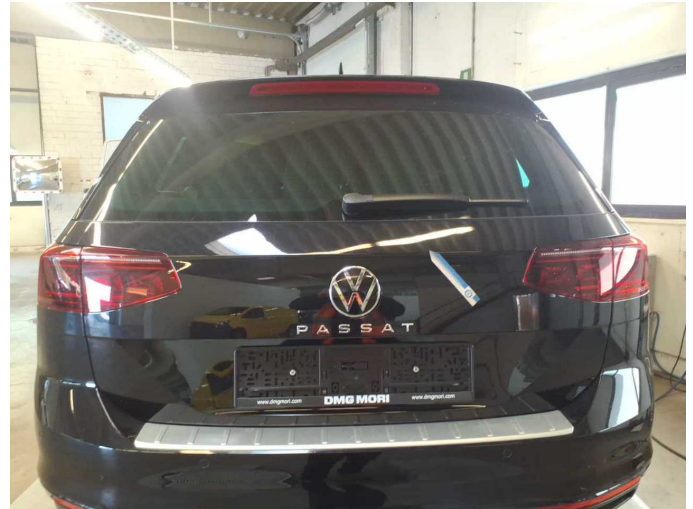
Wear and tear 3: Side panel - rear left side: Side panel - Stone chips - No deduction



Wear and tear 4: Door - front left side: Door edge - Scratched - No deduction



Wear and tear 4: Door - front left side: Door edge - Scratched - No deduction



Wear and tear 5: Boot lid / rear door: Boot lid - dent(s) - No deduction



Wear and tear 5: Boot lid / rear door: Boot lid - dent(s) - No deduction



Wartungshistorie

(gemäß Auftraggeber Informationen)

Fahrgestellnummer: WVVZZZ3CZPE036830

Hersteller / Modell: VOLKSWAGEN VW Passat Variant 2.0 TDI SCR DSG Business

| Datum | KM-Stand | Beschreibung |
|------------|----------|---|
| 22.10.2025 | 142.781 | Motoröl b. Wartung; Ölfilter ern; Regelwartungsdienst; Wartung Sonstiges |
| 28.04.2025 | 113.897 | Bremse Sonstiges; Bremsflüssigkeit; Bremsflüssigkeit ern; Bremsklötze hinten; Bremsscheiben + Klötze h; Bremsscheiben + Klötze v; Bremsscheiben hinten; Bremsscheiben vorne; Getriebeöl ern/prüfen; Kraftstofffilter ern; Luftfiltereinsatz ern; Motoröl b. Wartung; Ölfilter ern; Regelwartungsdienst; Systemtest/Eigendiagnose; Wartung Sonstiges |
| 05.11.2024 | 87.347 | Motoröl b. Wartung; Ölfilter ern; Regelwartungsdienst; Wartung Sonstiges |
| 24.04.2024 | 61.919 | Bremse Sonstiges; Bremsklötze hinten; Bremsscheiben + Klötze v; Bremsscheiben hinten; Bremsscheiben vorne; Motoröl b. Wartung; Ölfilter ern; Regelwartungsdienst; Wartung Sonstiges |
| 27.10.2023 | 32.369 | Motoröl b. Wartung; Ölfilter ern; Regelwartungsdienst; Wartung Sonstiges |