

## Expertise

Protocol number: 45889021  
Order No. / Reference: 26457114  
Inspection date: 11 Jun 2026

Manufacturer: Jaguar

Model: F-Pace D300 AWD R-Dynamic SE

VIN: SADCA2BW4NA695869



### Vehicle details

#### Manufacturer / Type / Model / Equipment

Jaguar F-Pace D300 AWD R-Dynamic SE

**Vehicle Identification number** SADCA2BW4NA695869

**Mileage (Read)** 85,702 km

**First registration** 5 Jul 2022

**Number of holders** 1

**Next periodical technical inspection** 06/2027  
(Report on hand)

**Power / Engine displacement** 221 kw / 2,997 ccm

**Fuel type / Cylinder** Hybrid Diesel / E / 6

**Gearbox / Number of gears** Automatic / 8

**Type of drive** All-wheel drive

**Type of vehicle** SUV

**Colour / colour code** Santorini Black Metallic

**Doors / Seats** 5 / 5

**Upholstery type** Leather

**Colour of upholstery** Black



## Vehicle details

<b>Maintenance booklet / proof</b>	digital proof / complete	<b>Next maintenance in</b>	
<b>Last service on / at</b>	06/2025 at 64,379 km		
<b>Key is / should be</b>	2 / 2	<b>FZG documents</b>	ZB#2 (B) was available (copy), ZB#1 (S) was not available.
		<b>Letter No.</b>	GD106454
<b>Previous damage / Accident</b>	None detectable	<b>Repainting</b>	None detectable
<b>Inspection conditions</b>	sufficient	<b>Lifting equipment / pit</b>	yes
<b>Test drive</b>	Not performed	<b>Engine function test</b>	Performed
<b>Manufacturer key number/ type code number</b>	1590 / AKJ 00011		
<b>Emission standard</b>	EURO6;WLTP;AP;PI/CI; M, N1 I	<b>fine dust sticker</b>	
<b>Permitted total weight</b>	2,660 kg	<b>Empty weight</b>	

## Tyres

### Mounted tyres

#	Tyre size	Type of tyre	Manufacturer	Tread depth
1)	255/50 R20 109W	Summer tyres on Light alloy	Pirelli	6mm / 6mm
2)	255/50 R20 109W	Summer tyres on Light alloy	Pirelli	6mm / 6mm

### Additional tyres

#	Tyre size	Type of tyre	Manufacturer	Tread depth
1)	255/55 R19 111V	Winter tyres on Light alloy	Vredestein	6mm / 6mm
2)	255/55 R19 111V	Winter tyres on Light alloy	Vredestein	6mm / 6mm

### Replacement

Typ	Tyre size	Type of tyre	Manufacturer	Tread depth
N	175/80 R19 122M	Summer tyres on Steel	Continental	4 mm

**Legend: Tread depth information for the left tire is listed first, for the right tire it is listed second on the axle in the direction of travel.**

TÜV SÜD Auto Partner GmbH  
Wiesenring 2  
04159 Leipzig

Inspection location  
Hartmann Compound Professionals  
Arnoldschacht 9-11  
44894 Bochum



## Equipment



## Standard equipment

- Storage compartments on the side of the center console
- Airbag: Front and side airbags for driver and front passenger
- All Surface Progress Control (ASPC)
- Amazon Alexa
- Analog round gauges with 7" TFT display
- Animated flashing lights, front and rear
- Attention assistant
- Exterior mirrors, electrically folding, adjustable and heated, with memory function,
- Brake pad wear indicator
- Brakes: Jaguar sports braking system with brake discs measuring 380 mm in diameter at the front and 325 mm at the rear.
- Differential with Torque Vectoring by Braking (TVBB)
- Dynamic mode, configurable
- Front and rear parking sensors
- Stainless steel front door sill trims with R-Dynamic emblem
- Chassis: Adaptive Dynamics (Adaptive Chassis)
- High beam with automatic dimming (Auto High Beam Assist, AHBA)
- Lockable glove compartment
- Heated rear window
- JaguarDrive Control
- Keyless Entry
- Automatic climate control (2-zone)
- Front and rear headrests
- Paint finish: Solid
- LED taillights
- 20" alloy wheels with 5 double spokes "Style 5031" Gloss Grey, Diamond Turned
- Steering wheel: Multifunction leather steering wheel
- Metal roof
- Navigation system: Pivi Pro with navigation
- Package: Online/Package with data tariff
- Radio accessories: Android Auto, Apple CarPlay
- Radio accessories: DAB radio receiver (DAB+)
- Rain sensor
- Wheels: Summer tires
- Secure Tracker
- Electromechanical power steering (Electric Power Assisted Steering, EPAS)
- Seats: Rear seats split 40:20:40, with armrest
- Sporty stainless steel pedals
- Sports seats in perforated grained leather in Ebony with interior in Ebony/Ebony
- Blind spot lane assist including proximity sensor
- Valet mode
- Lashing eyes in the cargo area
- Adaptive Cruise Control (ACC) with Traffic Jam Assist
- Airbag: Front and rear head airbags
- Perimetric alarm system including immobilizer
- All-wheel drive (AWD)
- Ambient interior lighting, configurable
- Trailer Stability Assist (TSA)
- Anti-lock braking system (ABS)
- Autonomous Emergency Braking (AEB)
- Welcome light
- Hill start assist
- Brakes: Brake calipers unpainted
- third brake light
- Morzine (fabric) headliner - Ebony
- Decorative elements in Engine Spin aluminum
- Tachometer
- Dynamic Stability Control (DSC)
- Rear door sill trims made of stainless steel
- Electric Parking Brake (EPB)
- F-Pace and R-Dynamic Emblem
- Electric windows, front and rear
- Transmission: 8-speed automatic transmission with Jaguar Sequential Shift
- electric tailgate
- Interior rearview mirror automatically dimming
- JaguarDrive Selector
- Child safety lock, electric
- Collision warning system for reversing with emergency braking
- Stainless steel loading sill protector
- LED headlights with LED signature
- Steering wheel: Steering column manually adjustable (axially and vertically)
- Steering wheel: Paddle shifters in matte chrome
- Center console with armrest
- rear fog lights
- Radio: Meridian sound system (400 W, 13 speakers including subwoofer)
- Radio accessories: Voice control
- Wheels: Tire Pressure Monitoring System (TPMS)
- Rear view camera
- Sensor-controlled headlights
- Seat belts with belt tensioners
- Seats: ISOFIX anchor points for child seats in the rear
- Seats: Front seats, 14-way adjustable (12-way electric, 2-way manual), heated, memory function
- Lane departure warning system
- Stop/Start system
- Blind spot warning system when opening doors
- Traffic sign recognition with intelligent speed limiter
- Central locking with remote control



### Extra equipment

- Adaptive Surface Response (ASR)
- Package: Cargo Comfort Package
- Package: Smoker
- Package: Winter Package (Heated windscreen and windscreen washer nozzles - Heated multifunction leather steering wheel (R-Dynamic with emblem) - Headlight cleaning system)
- Paint finish: Metallic
- Seats: Performance seats in perforated Windsor leather in Ebony with Ebony/Ebony interior
- Wheels: Spare wheel (steel)
- Wireless charging for smartphones
- Electric panoramic sunroof
- Package: Driver Assistance Package (Adaptive Cruise Control (ACC) with Traffic Jam Assist - Reversing Collision Warning System with Emergency Braking - Collision Warning System Monitor - Blind Spot Lane Assist incl. Proximity Sensor)
- Radio: Meridian surround sound system (650 W, 17 speakers including subwoofer)
- Seats: Performance front seats, 14-way electrically adjustable, heated and cooled, with memory function (forward/backward - seat height - seat tilt - backrest tilt - backrest side bolsters - lumbar support, 4-way electrically adjustable)

### Brief expert findings

Documents submitted	At the time of the inspection, the vehicle registration certificate Part 2 (title) was available, but the vehicle registration certificate Part 1 (document) was not. (Copy)
VIN comparison	The vehicle identification number (VIN) was read from the vehicle and its conformity with the submitted documents was confirmed by the undersigned during the inspection.
Inspection	The inspection conditions were sufficient for the assessment of the vehicle. Lifting equipment and/or a pit were available for examining the vehicle.
Test drive	No test drive/shunting maneuver was carried out during the inspection of the vehicle.
Engine function test	An engine test run was performed.

### Value reducing factors

No.	Component group	Description
1	Trim / covers	Boot lid - interior trim - Scratch(es) - Smart repair
2	Door - rear left side	Door - dent(s) - Smooth repair work
3	Screen cleaning	Wiper arm - rear - Broken / torn - Replace
4	Rear bumper	Spoiler - Scratch(es) - Smart repair
5	Front bumper	Front bumper - Scratch(es) - Repair and paint
6	Door - front right side	Door - Dent / paintcoat damage - Repair and paint

### Wear and tear

No.	Component group	Description
1	Body	Body - Scratch(es) - No deduction

The vehicle shows signs of wear and tear commensurate with its age and use.

### Order/Scope of Order

An order was placed to prepare a sales report for the described vehicle. This report includes the following:

- Description of key vehicle information
- Documentation of equipment features  
(*Delivery by third-party service providers*)
- Documentation of damage, defects, missing parts
- Documentation of prior damage, unrepaired prior damage, repainting
- A brief visual or functional inspection of the equipment details, if possible.  
(*Functional testing of driver assistance systems is not included in the scope of services!*)
- a photographic documentation of the vehicle



## Basis for the order

This product is based on the guidelines for vehicle returns and valuations published by Alphabet Fleet GmbH. The expert makes the specific findings in each individual case objectively, within the framework of the prescribed standards, based on their own expertise.

The vehicle inspection takes place in a fully assembled, unassembled state.

Damage or defects that can only be detected during disassembly/diagnostic work or through further investigation remain within the realm of prognostic risk. An increased risk exists due to concealed defects caused by fraudulent misrepresentation and which were not identifiable by the expert.

Damage or defects resulting from normal use or wear and tear of the vehicle will be accepted in accordance with the applicable standard.

There was no explicit identification or monetary consideration of the expected features within the product.

Features which, in their nature and extent, slightly exceed normal use but do not constitute unacceptable damage, will be documented and indicated as signs of wear, if applicable.

Damage or defects that, according to the applicable standard, can no longer be attributed to normal use or wear and tear are listed under "Value Reducing Factors" in the product description.

Depending on the product specification, a monetary ID can be provided. If this takes place, the costs can be 100% d or pro rata depending on the vehicle's age and mileage.

## Previous damages

No apparent prior damage that had been repaired could be found on the vehicle.

## Comments

Wartungshistorie gemäß Auftraggeber Informationen.

Der beiliegende Radsatz gehört nicht zur Ausstattung.

Servicerestlauf nicht anzeigbar



Figure 1: Diagonal front (left)



Figure 2: Diagonal front (right)



Figure 3: Diagonal rear (left)



Figure 4: Diagonal rear (right)



Figure 5: Interior - front

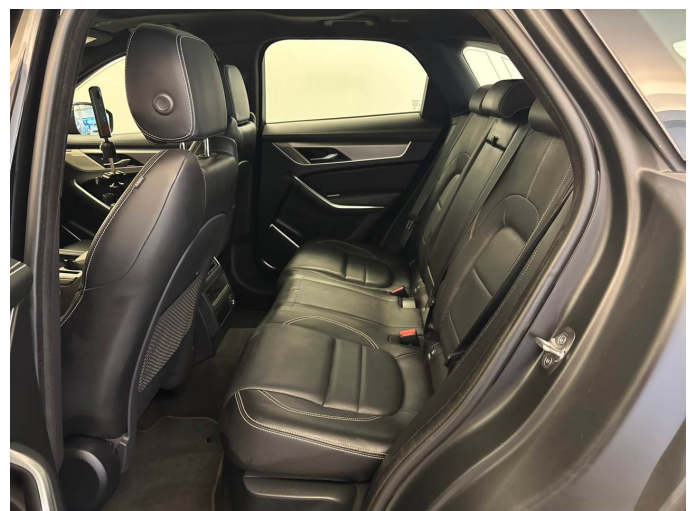


Figure 6: Interior - rear



Figure 7: Instrument cluster



Figure 8: Instrument panel



Figure 9: Interior 360° view



Figure 10: Cargo area

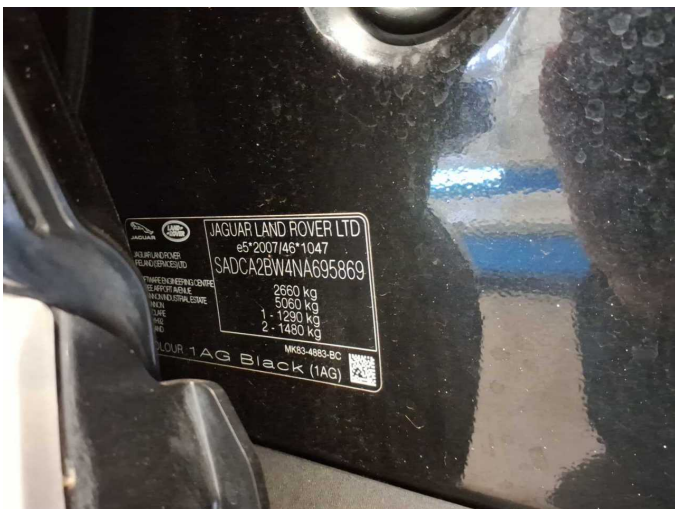


Figure 11: VIN



Figure 12: Mounted tyres



Figure 13: Documents



Figure 14: Documents



Figure 15: Additional tyres



Figure 16: Navigation



Figure 17: Misc.



Figure 18: Misc.



Figure 19: Misc.



Figure 20: Misc.

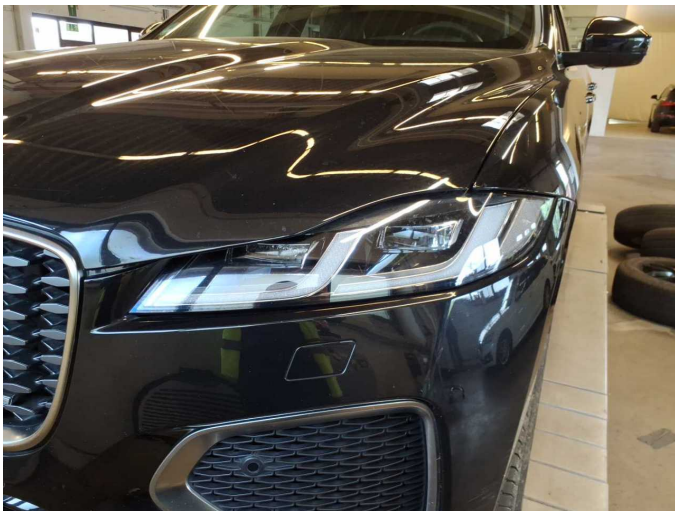


Figure 21: Misc.



Figure 22: Misc.



Figure 23: Misc.



Figure 24: Misc.



Figure 25: Misc.



Figure 26: Misc.



Figure 27: Misc.

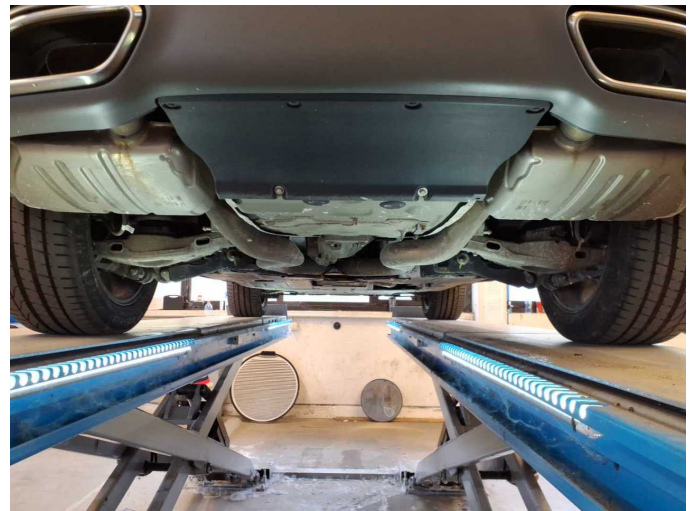


Figure 28: Misc.

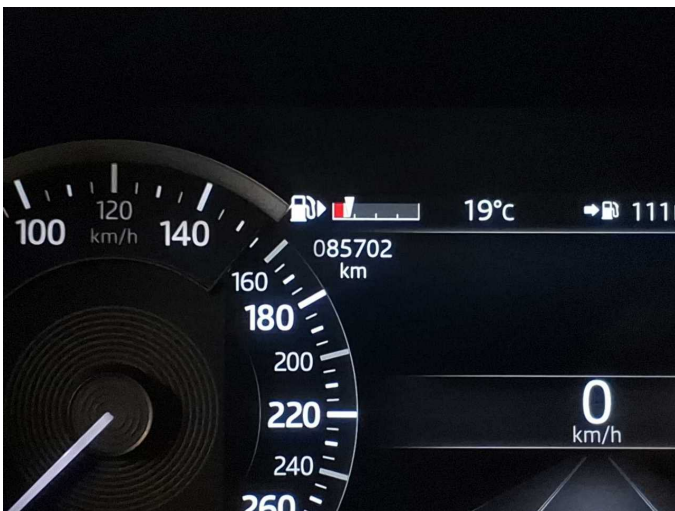


Figure 29: Misc.



Figure 30: Misc.



Figure 31: Misc.



Figure 32: Misc.



Figure 33: Misc.



Figure 34: Misc.



Damage 1: Trim / covers: Boot lid - interior trim - Scratch(es) - Smart repair



Damage 1: Trim / covers: Boot lid - interior trim - Scratch(es) - Smart repair



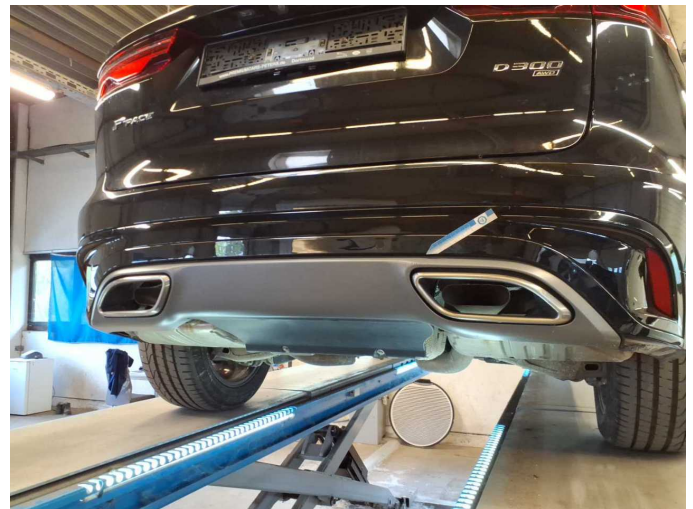
**Damage 2:** Door - rear left side: Door - dent(s) - Smooth repair work



**Damage 2:** Door - rear left side: Door - dent(s) - Smooth repair work



**Damage 3:** Screen cleaning: Wiper arm - rear - Broken / torn - Replace



**Damage 4:** Rear bumper: Spoiler - Scratch(es) - Smart repair



**Damage 4:** Rear bumper: Spoiler - Scratch(es) - Smart repair



**Damage 4:** Rear bumper: Spoiler - Scratch(es) - Smart repair



**Damage 5:** Front bumper: Front bumper - Scratch(es) - Repair and paint



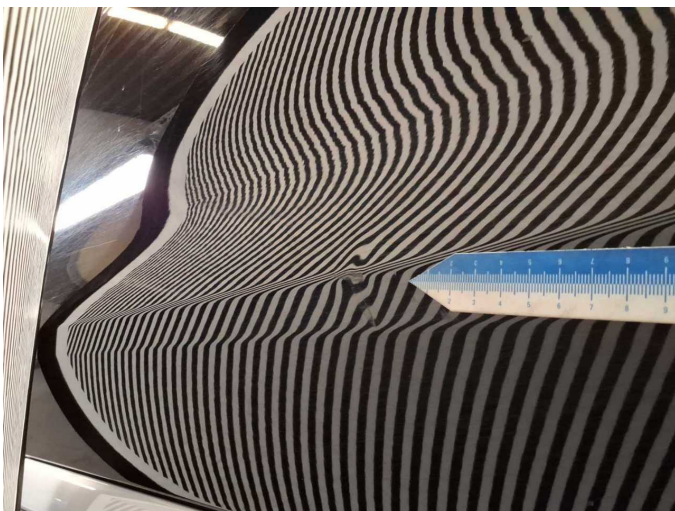
**Damage 5:** Front bumper: Front bumper - Scratch(es) - Repair and paint



**Damage 6:** Door - front right side: Door - Dent / paintcoat damage - Repair and paint



**Damage 6:** Door - front right side: Door - Dent / paintcoat damage - Repair and paint



**Damage 6:** Door - front right side: Door - Dent / paintcoat damage - Repair and paint



# Wartungshistorie

(gemäß Auftraggeber Informationen)

Fahrgestellnummer: SADCA2BW4NA695869

Hersteller / Modell: JAGUAR JAGUAR F-Pace D300 AWD R-Dynamic SE

Datum	KM-Stand	Beschreibung
27.06.2025	64.379	AU; Bremsbelagfühler ern; Bremse Sonstiges; Bremsklötze hinten; Bremsklötze vorne; Bremsscheiben + Klötze v; Bremsscheiben vorne; Kraftstofffilter ern; Luftfiltereinsatz ern; Motoröl b. Wartung; Ölfilter ern; Regelwartungsdienst; Wartung Sonstiges
26.11.2024	31.987	Bremsflüssigkeit; Motoröl b. Wartung; Ölfilter ern; Regelwartungsdienst; Wartung Sonstiges