

Expertise

Protocol number: 46328397
Order No. / Reference: 26631764
Inspection date: 2 Jul 2026

Manufacturer: Audi

Model: S6 Avant TDI quattro tiptronic

VIN: WAUZZZF25NN039653



Vehicle details

Manufacturer / Type / Model / Equipment

Audi S6 Avant TDI quattro tiptronic

Vehicle Identification number WAUZZZF25NN039653

Mileage (Read) 172,278 km

First registration 18 Mar 2022

Number of holders 1

Power / Engine displacement 253 kw / 2,967 ccm

Fuel type / Cylinder Hybrid Diesel / E / 6

Gearbox / Number of gears Automatic / 7

Type of drive All-wheel drive

Type of vehicle Station wagon

Colour / colour code Firmamentblau Metallic

Doors / Seats 5 / 5

Upholstery type Alcantara / Leather

Colour of upholstery Anthracite-Black



Vehicle details

Maintenance booklet / proof	Non-existent	Next maintenance in	16,800 km
Key is / should be	2 / 2	FZG documents	ZB#2 (B) was available (copy), ZB#1 (S) was not available.
		Letter No.	GJ041092
Previous damage / Accident	Detectable	Repainting	None detectable
Inspection conditions	sufficient	Lifting equipment / pit	No
Test drive	Not performed	Engine function test	Performed
Manufacturer key number/ type code number	0588 / BWV 00104		
Emission standard	EURO6;WLTP;AP;PI/CI; M, N1 I	fine dust sticker	
Permitted total weight	2,655 kg	Empty weight	

Tyres

Mounted tyres

#	Tyre size	Type of tyre	Manufacturer	Tread depth
1)	255/35 R21 98Y	Summer tyres on Light alloy	Bridgestone	5mm / 5mm
2)	255/35 R21 98Y	Summer tyres on Light alloy	Bridgestone	5mm / 5mm

Additional tyres

#	Tyre size	Type of tyre	Manufacturer	Tread depth
1)	245/45 R19 102V	Winter tyres on Light alloy	Continental	3mm / 3mm
2)	245/45 R19 102V	Winter tyres on Light alloy	Continental	4mm / 4mm

Replacement

Typ	Tyre size	Type of tyre	Manufacturer	Tread depth
Tirefit		Expiration date 05/2027		

Legend: Tread depth information for the left tire is listed first, for the right tire it is listed second on the axle in the direction of travel.



Equipment

Standard equipment

- AdBlue tank (12 liters)
- Airbag: Front side airbags and head airbag system
- Anti-lock braking system (ABS)
- Audi connect emergency call & service m.connect remote & control
- Electrically adjustable, heated and folding exterior mirrors with memory function
- Fabric headliner
- Decorative inlay in dark, matt brushed aluminum
- Diesel particulate filter (DPF) with nitrogen oxide catalyst and AdBlue tank
- Electronic Stability Control (ESC)
- Chassis: S sport suspension with damper control
- Luggage compartment lid, electrically opening and closing
- Transmission: 8-speed automatic transmission tiptronic
- Interior mirror dimming
- ISOFIX child seat attachment and Top Tether for the outer rear seats
- Headrests (4)
- Paint finish: Solid
- Steering wheel: Leather steering wheel, 3-spoke, with multifunction and paddle shifters
- MMI navigation with MMI touch response
- Non-smoking package
- Pedals and footrest in stainless steel
- Wheel: Alloy wheels, 5-arm design (S-design)
- Wheel: Tire repair kit
- Radio accessories: Audi sound system
- Seat covers in Dinamica microfiber frequency/leather combination with S-embossing
- Seats: Front sports seats
- Sun visor on driver and passenger side
- Lane Departure Warning
- Phone: Audi smartphone interface
- Glazing: Rear window, rear door and side windows in clear glass
- Central locking
- Airbag for driver and front passenger
- All-wheel drive "quattro" with self-locking center differential
- Audi connect navigation & infotainment
- Audi drive select
- Audi pre sense front
- Exterior mirror housings in aluminum look
- third brake light
- Aluminum roof rails
- Anti-theft alarm system
- Tachometer
- Door sills with aluminum inlay, front and rear, illuminated
- Driver information system with color display
- key fob
- Cruise control system including speed limiter
- Interior lighting
- Instrument panel and door trim, two-piece, single/multi-color
- 4-zone automatic climate control
- Fuel tank (73 liters)
- LED headlights
- Steering column, manually adjustable in height and axis
- front center armrest
- Package Gloss
- Package: Filing package
- Progressive steering
- Wheel: Tire pressure monitoring system
- Radio: MMI Radio plus with MMI touch response
- Rail system with fixing set
- Seats: 4-way lumbar support
- Seats: Split-folding rear seat backrest Avant
- Seats: Electrically adjustable front seats including memory function for the driver's seat
- Start-stop system
- Glazing: Windscreen in heat-insulating glazing
- Electronic immobilizer
- Thermal insulation glazing on the sides and rear



Extra equipment

- Black fabric headliner
- Front seat heating (heats seat and backrest center panels; with leather upholstery, sport seats and sport seats plus also seat side bolsters - individually adjustable in multiple stages for driver and front passenger side via the climate control unit)
- LED headlights: HD Matrix LED headlights with dynamic turn signals (daytime running lights, low beam, high beam, position lights, turn signals, cornering lights, all-weather lights, motorway lights, adaptive headlights, automatic headlight range control, intersection lights, headlight cleaning system, LED taillights with dynamic light display and dynamic turn signals)
- Paint finish: Metallic
- Parking aid plus with surround view (acoustic and visual parking aid front, side and rear to assist with parking and maneuvering by measuring with 12 ultrasonic sensors. A selective visual display shows the distance to detected objects in the upper display, depending on the current steering angle and the direction of travel. Optionally, activation occurs automatically as soon as the vehicle approaches a detected obstacle at a speed of less than 10 km/h).
- Rail system with fixing set (telescopic pole and strap for individual partitioning of the luggage compartment and secure fixing of objects, stowable under the loading floor)
- Swiveling towbar with electric release (with swiveling ball head, trailer stabilization via electronic stability control (ESC), release via button in the luggage compartment, the integrated swiveling system socket allows continuous operation of electrical devices in the trailer or caravan while driving)
- Tour Assistance Package (Adaptive Driving Assistant - Adaptive Cruise Control, Speed Limiter - Efficiency Assistant supports the driver in anticipatory and therefore fuel-saving driving - Evasive Steering Assist helps the driver to steer the vehicle around an obstacle in a critical situation - Turning Assist - Emergency Assist - High Beam Assist - Camera-based Traffic Sign Recognition)
- Wheel: Light alloy wheels 5-twin-spoke-V (S-design) (8.5J x 21 with tires 255/35 R21)
- Wheel: Winter alloy wheels, 10-spoke dynamic design (8 J x 19 with tires 245/45 R19)
- Ambient lighting package (in addition to the standard interior lighting:
 - Ambient fabric lighting in the front/rear doors - Pre-view lighting from the front/rear door handles - Ambient lighting of the instrument panel)
- Automatically dimming, frameless interior mirror (can increase safety, as reduced glare improves the perception of following traffic at night - less glare at night, among other factors, can help to recognize other vehicles in the interior mirror more quickly and better - reduced glare can help to prevent eye fatigue)
- Black Optics Package Plus (Black optics package with Audi rings front/rear and model designation in black)
- Brake calipers, painted red
- Control buttons in glossy black with haptic feedback and aluminum-look interior (control button strip in the center console and light buttons in glossy black, control button and light button strip with haptic feedback - light button strip including proximity sensor - control buttons for driver assistance systems, buttons for parking brake, auto-hold function, central locking front and rear, rear locking, frame around the interior door handles and window regulators in aluminum look)
- Glazing: Privacy glazing (tinted windows) (rear window, rear door and side windows tinted)
- Head-up display (projects speed and other driver-relevant information from optional equipment such as assistance systems and navigation, as well as warnings, into the driver's direct field of vision; height-adjustable; enables high-contrast, multi-colored display with reduced eye strain from the road)
- Panoramic glass roof (2-piece) (extra-large, tinted glass surface for a progressive design; electric operation for tilting and opening, including an electrically operated, lightproof sunshade; convenient opening and closing from the outside via the remote key ensures a pleasant, light-flooded interior; improved interior climate through efficient ventilation; integrated wind deflector reduces wind noise when the roof is open)
- Reversing camera (The reversing camera displays the area behind the vehicle on the upper display. Dynamic display elements such as a steering angle-dependent lane calculation assist with parking or maneuvering.)

Brief expert findings

Documents submitted	At the time of the inspection, the vehicle registration certificate Part 2 (title) was available, but the vehicle registration certificate Part 1 (document) was not. (Copy)
VIN comparison	The vehicle identification number (VIN) was read from the vehicle and its conformity with the submitted documents was confirmed by the undersigned during the inspection.
Inspection	The inspection conditions were sufficient for the assessment of the vehicle. No lifting equipment or pit was available for inspecting the vehicle. Therefore, inspection of the vehicle's underside was only possible to a limited extent.
Test drive	No test drive/shunting maneuver was carried out during the inspection of the vehicle.
Engine function test	An engine test run was performed.



Value reducing factors

No.	Component group	Description
1	Misc.	Inspection / maintenance - No evidence - No deduction
2	Misc.	Main inspection - No evidence - No deduction
3	Wing mirror - right side	Cap - Scratch(es) - Smart repair
4	2nd wheel set	1 alloy rim - Scratch(es) - Loss in value
5	Wheel / tyres	Alloy rim - rear left side - Scratch(es) - Loss in value
6	Wheel / tyres	Alloy rim - rear right side - Scratch(es) - Loss in value
7	Wheel / tyres	Alloy rim - front left side - Scratch(es) - Loss in value
8	Wheel / tyres	Alloy rim - front right side - Scratch(es) - Loss in value
9	Door - rear right side	Door - Scratch(es) - Paint
10	2nd wheel set	Tyres - complete set - Worn - Replace
11	Braking system	Brake pads - front (Untermaß) - on - Replace
12	Side panel - rear right side	Side panel - Deformed - Repair and paint
13	Door - front right side	Door - Scratch(es) - Paint
14	Front bumper	Front bumper (Zusätzlich Blende VL Kratzer) - Scratch(es) - repair according to calculation
15	Vehicle glazing	Windscreen - Broken / torn - repair according to calculation

Wear and tear

No.	Component group	Description
1	Bonnet	Bonnet - Dent / paintcoat damage - No deduction
2	Rear bumper	Rear bumper (Zusätzlich Blende Kratzer) - Dent / paintcoat damage - No deduction
3	Door - front left side	Door edge - Scratch(es) - No deduction

The vehicle shows signs of wear and tear commensurate with its age and use.

Accident damages

No.	Accident
1	Rear, Side - left

Order/Scope of Order

An order was placed to prepare a sales report for the described vehicle. This report includes the following:

- Description of key vehicle information
- Documentation of equipment features
(*Delivery by third-party service providers*)
- Documentation of damage, defects, missing parts
- Documentation of prior damage, unrepaired prior damage, repainting
- A brief visual or functional inspection of the equipment details, if possible.
(*Functional testing of driver assistance systems is not included in the scope of services!*)
- a photographic documentation of the vehicle



Basis for the order

This product is based on the guidelines for vehicle returns and valuations published by Alphabet Fleet GmbH. The expert makes the specific findings in each individual case objectively, within the framework of the prescribed standards, based on their own expertise.

The vehicle inspection takes place in a fully assembled, unassembled state.

Damage or defects that can only be detected during disassembly/diagnostic work or through further investigation remain within the realm of prognostic risk. An increased risk exists due to concealed defects caused by fraudulent misrepresentation and which were not identifiable by the expert.

Damage or defects resulting from normal use or wear and tear of the vehicle will be accepted in accordance with the applicable standard.

There was no explicit identification or monetary consideration of the expected features within the product.

Features which, in their nature and extent, slightly exceed normal use but do not constitute unacceptable damage, will be documented and indicated as signs of wear, if applicable.

Damage or defects that, according to the applicable standard, can no longer be attributed to normal use or wear and tear are listed under "Value Reducing Factors" in the product description.

Depending on the product specification, a monetary ID can be provided. If this takes place, the costs can be 100% d or pro rata depending on the vehicle's age and mileage.

Previous damages

Non-repaired previous damages were found at the vehicle. The necessary repair costs are listed in the expert report or if necessary, are listed in detail in a separately enclosed repair cost calculation.

Comments

Die beigefügte Reparaturkostenkalkulation wurde nach bestem Wissen und Gewissen unter eingeschränkter Besichtigungsbedingung im demontagefreien Zustand erstellt. Es können aufgrund verdeckter Beschädigung erhebliche Mehrkosten und somit Abweichung der für den Unfall ausgewiesenen Reparaturkosten nicht ausgeschlossen werden.



Figure 1: Diagonal front (left)



Figure 2: Diagonal front (right)



Figure 3: Diagonal rear (left)



Figure 4: Diagonal rear (right)



Figure 5: Interior - front



Figure 6: Interior - rear



Figure 7: Instrument cluster



Figure 8: Instrument panel



Figure 9: Interior 360° view



Figure 10: Cargo area



Figure 11: VIN



Figure 12: Mounted tyres



Figure 13: Documents



Figure 14: Additional tyres

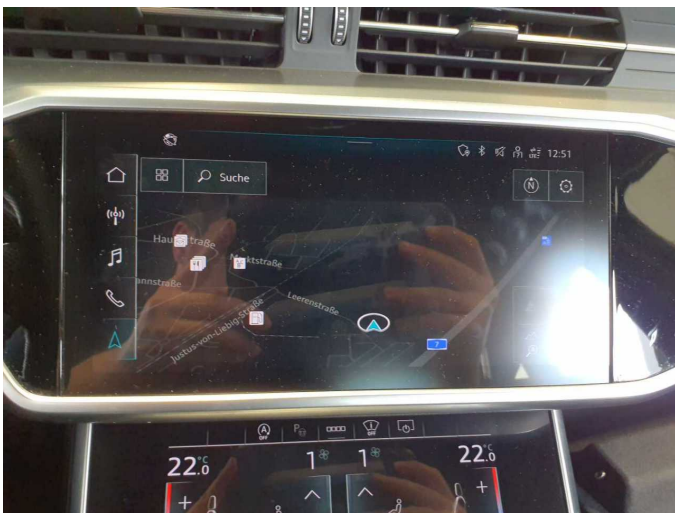


Figure 15: Navigation



Figure 16: Misc.

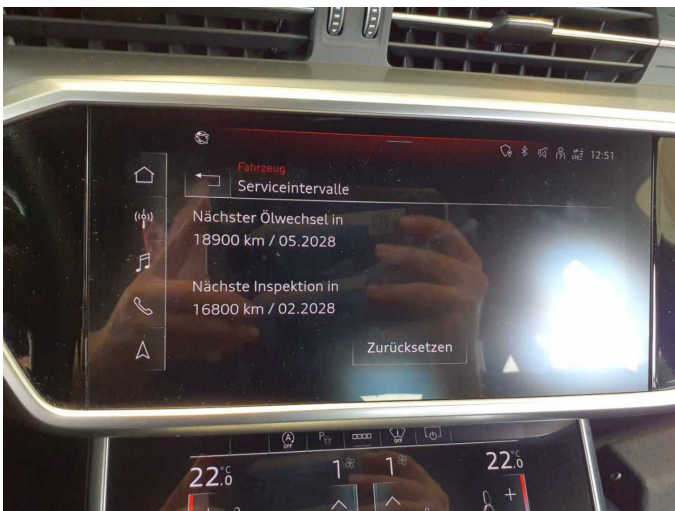


Figure 17: Misc.



Figure 18: Misc.



Figure 19: Misc.



Figure 20: Misc.



Figure 21: Misc.



Figure 22: Misc.



Figure 23: Misc.



Figure 24: Misc.



Figure 25: Misc.



Figure 26: Misc.

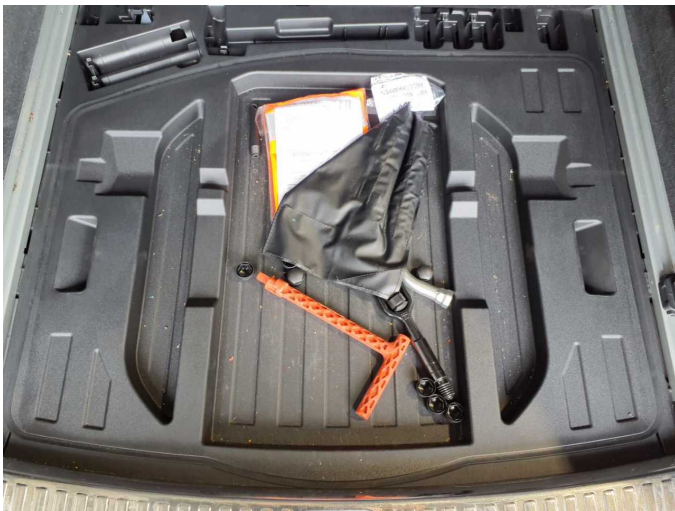


Figure 27: Misc.

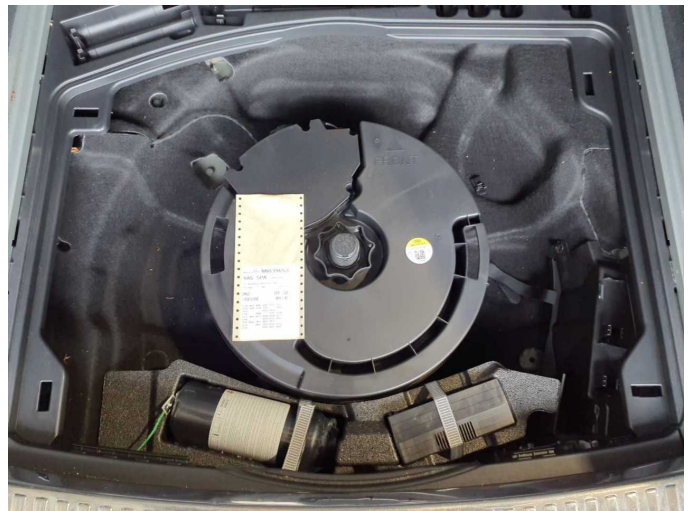
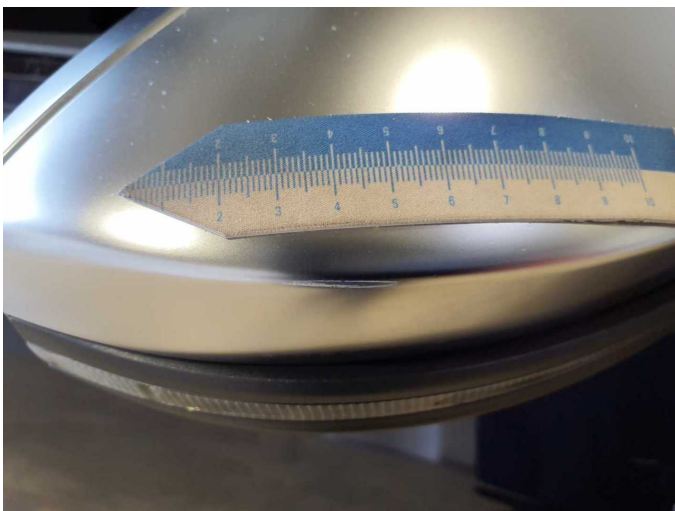


Figure 28: Misc.



Damage 3: Wing mirror - right side: Cap - Scratch(es) - Smart repair



Damage 3: Wing mirror - right side: Cap - Scratch(es) - Smart repair



Damage 4: 2nd wheel set: 1 alloy rim - Scratch(es) - Loss in value



Damage 4: 2nd wheel set: 1 alloy rim - Scratch(es) - Loss in value



Damage 4: 2nd wheel set: 1 alloy rim - Scratch(es) - Loss in value



Damage 4: 2nd wheel set: 1 alloy rim - Scratch(es) - Loss in value



Damage 4: 2nd wheel set: 1 alloy rim - Scratch(es) - Loss in value



Damage 5: Wheel / tyres: Alloy rim - rear left side - Scratch(es) - Loss in value



Damage 5: Wheel / tyres: Alloy rim - rear left side - Scratch(es) - Loss in value



Damage 5: Wheel / tyres: Alloy rim - rear left side - Scratch(es) - Loss in value



Damage 5: Wheel / tyres: Alloy rim - rear left side - Scratch(es) - Loss in value



Damage 5: Wheel / tyres: Alloy rim - rear left side - Scratch(es) - Loss in value



Damage 6: Wheel / tyres: Alloy rim - rear right side - Scratch(es) - Loss in value



Damage 6: Wheel / tyres: Alloy rim - rear right side - Scratch(es) - Loss in value



Damage 6: Wheel / tyres: Alloy rim - rear right side - Scratch(es) - Loss in value



Damage 7: Wheel / tyres: Alloy rim - front left side - Scratch(es) - Loss in value



Damage 7: Wheel / tyres: Alloy rim - front left side - Scratch(es) - Loss in value



Damage 7: Wheel / tyres: Alloy rim - front left side - Scratch(es) - Loss in value



Damage 8: Wheel / tyres: Alloy rim - front right side - Scratch(es) - Loss in value



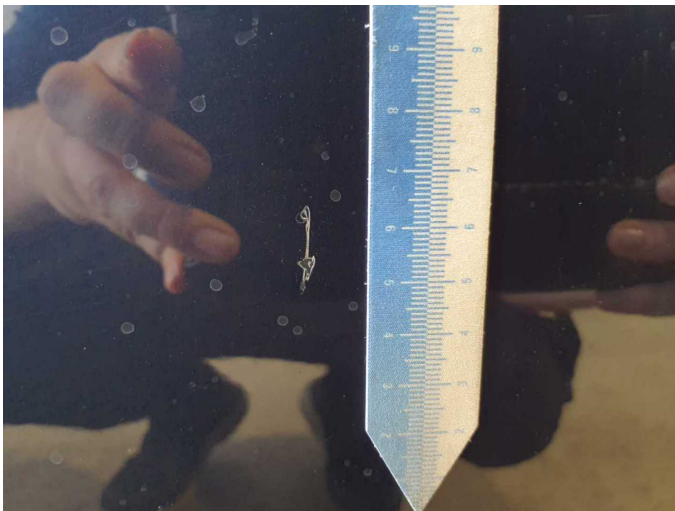
Damage 8: Wheel / tyres: Alloy rim - front right side - Scratch(es) - Loss in value



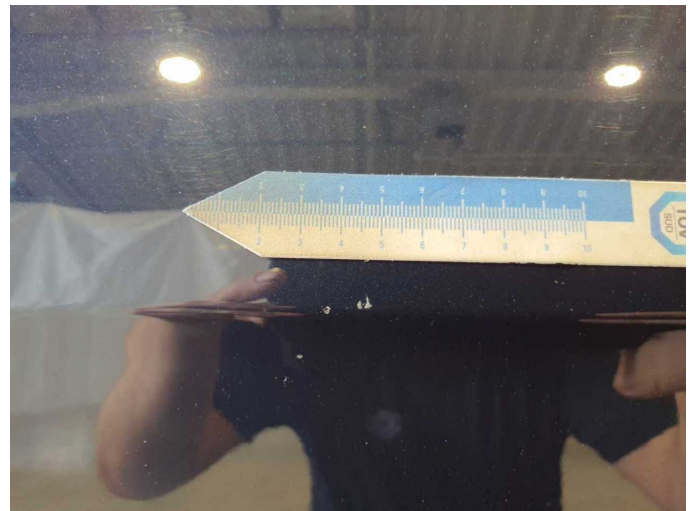
Damage 8: Wheel / tyres: Alloy rim - front right side - Scratch(es) - Loss in value



Damage 8: Wheel / tyres: Alloy rim - front right side - Scratch(es) - Loss in value



Damage 9: Door - rear right side: Door - Scratch(es) - Paint



Damage 9: Door - rear right side: Door - Scratch(es) - Paint



Damage 9: Door - rear right side: Door - Scratch(es) - Paint



Damage 10: 2nd wheel set: Tyres - complete set - Worn - Replace



Damage 10: 2nd wheel set: Tyres - complete set - Worn - Replace



Damage 10: 2nd wheel set: Tyres - complete set - Worn - Replace



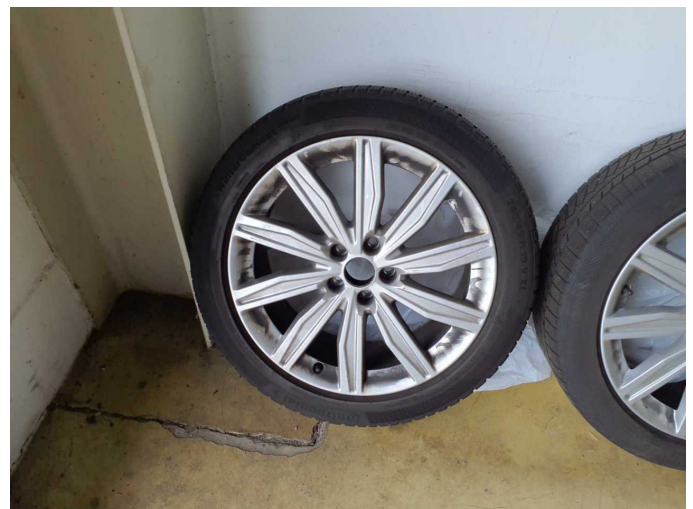
Damage 10: 2nd wheel set: Tyres - complete set - Worn - Replace



Damage 10: 2nd wheel set: Tyres - complete set - Worn - Replace



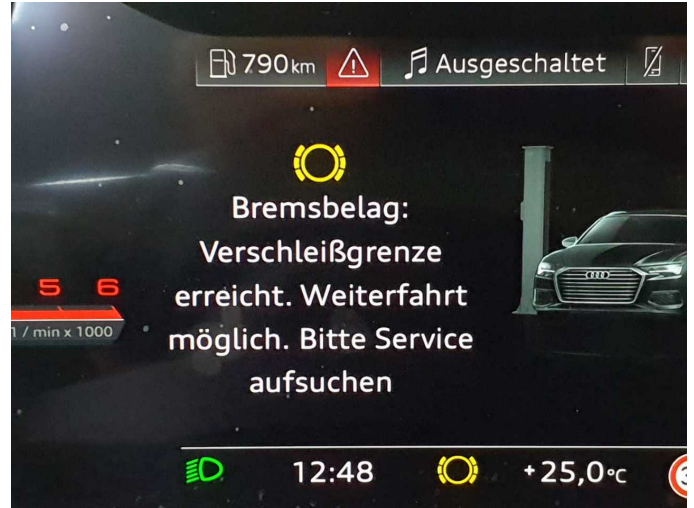
Damage 10: 2nd wheel set: Tyres - complete set - Worn - Replace



Damage 10: 2nd wheel set: Tyres - complete set - Worn - Replace



Damage 10: 2nd wheel set: Tyres - complete set - Worn - Replace



Damage 11: Braking system: Brake pads - front (Untermaß) - on - Replace



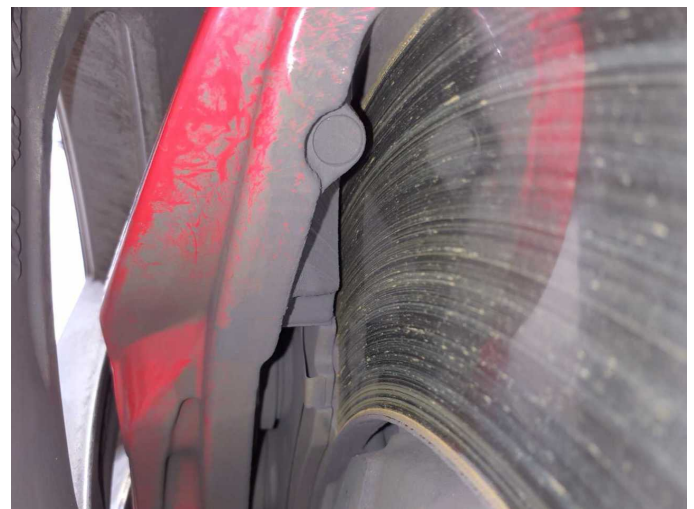
Damage 11: Braking system: Brake pads - front (Untermaß) - on - Replace



Damage 11: Braking system: Brake pads - front (Untermaß) - on - Replace



Damage 11: Braking system: Brake pads - front (Untermaß) - on - Replace



Damage 11: Braking system: Brake pads - front (Untermaß) - on - Replace



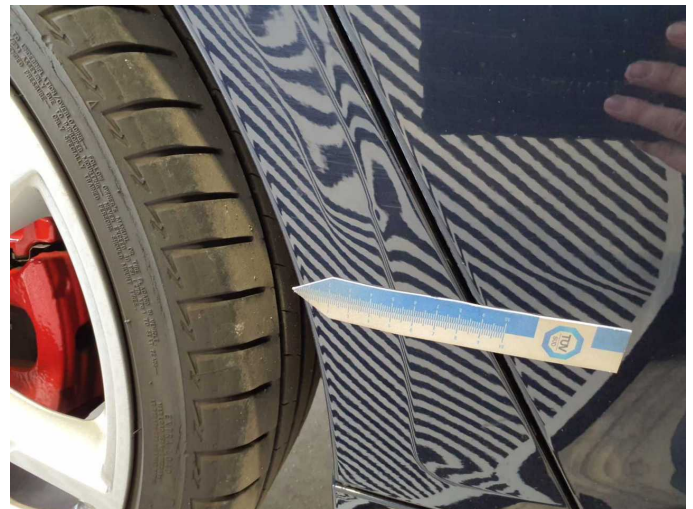
Damage 12: Side panel - rear right side: Side panel - Deformed - Repair and paint



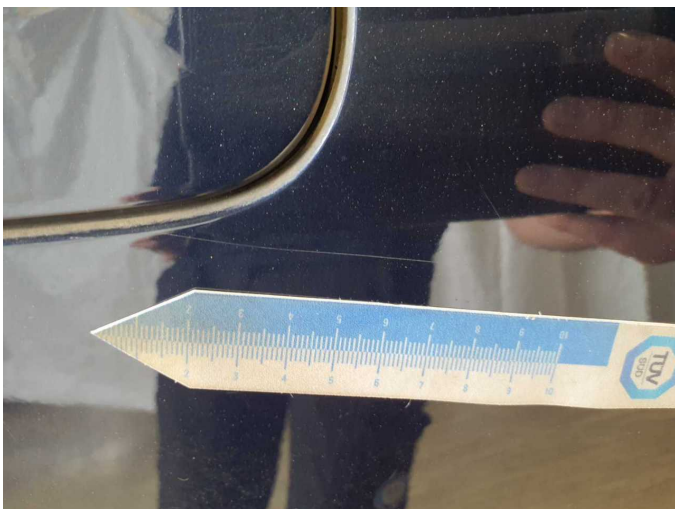
Damage 12: Side panel - rear right side: Side panel - Deformed - Repair and paint



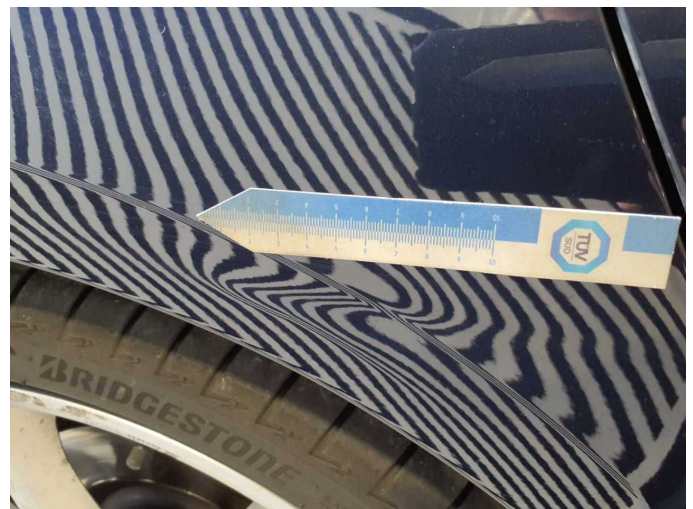
Damage 12: Side panel - rear right side: Side panel - Deformed - Repair and paint



Damage 12: Side panel - rear right side: Side panel - Deformed - Repair and paint



Damage 12: Side panel - rear right side: Side panel - Deformed - Repair and paint



Damage 12: Side panel - rear right side: Side panel - Deformed - Repair and paint



Damage 13: Door - front right side: Door - Scratch(es) - Paint



Damage 13: Door - front right side: Door - Scratch(es) - Paint



Damage 13: Door - front right side: Door - Scratch(es) - Paint



Damage 13: Door - front right side: Door - Scratch(es) - Paint



Damage 14: Front bumper: Front bumper (Zusätzlich Blende VL Kratzer) - Scratch(es) - repair according to calculation



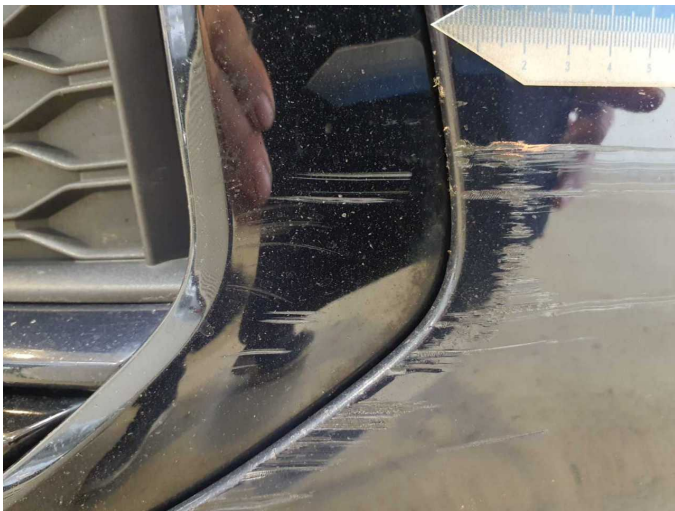
Damage 14: Front bumper: Front bumper (Zusätzlich Blende VL Kratzer) - Scratch(es) - repair according to calculation



Damage 14: Front bumper: Front bumper (Zusätzlich Blende VL Kratzer)
- Scratch(es) - repair according to calculation



Damage 14: Front bumper: Front bumper (Zusätzlich Blende VL Kratzer)
- Scratch(es) - repair according to calculation



Damage 14: Front bumper: Front bumper (Zusätzlich Blende VL Kratzer)
- Scratch(es) - repair according to calculation



Damage 14: Front bumper: Front bumper (Zusätzlich Blende VL Kratzer)
- Scratch(es) - repair according to calculation



Damage 14: Front bumper: Front bumper (Zusätzlich Blende VL Kratzer)
- Scratch(es) - repair according to calculation



Damage 14: Front bumper: Front bumper (Zusätzlich Blende VL Kratzer)
- Scratch(es) - repair according to calculation



Damage 15: Vehicle glazing: Windscreen - Broken / torn - repair according to calculation



Damage 15: Vehicle glazing: Windscreen - Broken / torn - repair according to calculation



Accident 1: Rear, Side - left



Accident 1: Rear, Side - left



Accident 1: Rear, Side - left



Accident 1: Rear, Side - left



Accident 1: Rear, Side - left



Accident 1: Rear, Side - left



Accident 1: Rear, Side - left



Accident 1: Rear, Side - left



Accident 1: Rear, Side - left