

Expertise

Protocol number: 46211213
Order No. / Reference: 26573210
Inspection date: 25 Jun 2026

Manufacturer: Ford

Model: Transit Connect 230 L2 Trend

VIN: WF0SXXWPGSNA82654



Vehicle details

Manufacturer / Type / Model / Equipment

Ford Transit Connect 230 L2 Trend

Vehicle Identification number WF0SXXWPGSNA82654

Mileage (Read) 89,886 km

First registration 5 Apr 2023

Number of holders 1

Power / Engine displacement 73 kw / 1,499 ccm

Fuel type / Cylinder Diesel / 4

Gearbox / Number of gears Manual / 6

Type of drive Front drive

Type of vehicle Van

Colour / colour code Frozen White

Doors / Seats 4 / 2

Upholstery type Cloth

Colour of upholstery Black-Grey

readiness to drive Roadworthy



Vehicle details

| | | | |
|--|----------------------------|--------------------------------|--|
| Maintenance booklet / proof | Available / complete | Next maintenance in | 5 % |
| Last service on / at | 06/2025 at 61,255 km | | |
| Key is / should be | 2 / 2 | FZG documents | ZB#2 (B) was available (copy), ZB#1 (S) was not available. |
| | | Letter No. | GP501350 |
| Previous damage / Accident | Detectable | Repainting | None detectable |
| Inspection conditions | sufficient | Lifting equipment / pit | yes |
| Test drive | Not performed | Engine function test | Performed |
| readiness to drive | Roadworthy | | |
| Manufacturer key number/ type code number | 8566 / BUU 01076 | | |
| Emission standard | EURO6;WLTP;AQ;PI/CI; N1 II | fine dust sticker | |
| Permitted total weight | 2,270 kg | Empty weight | |

Tyres

Mounted tyres

| # | Tyre size | Type of tyre | Manufacturer | Tread depth |
|----|----------------|--|--------------|-------------|
| 1) | 205/60 R16 96H | Summer tyres on Steel rim with wheel cover | Continental | 4mm / 4mm |
| 2) | 205/60 R16 96H | Summer tyres on Steel rim with wheel cover | Continental | 5mm / 5mm |

Additional tyres

| # | Tyre size | Type of tyre | Manufacturer | Tread depth |
|----|----------------|-----------------------|--------------|-------------|
| 1) | 205/60 R16 96H | Winter tyres on Steel | Goodyear | 5mm / 5mm |
| 2) | 205/60 R16 96H | Winter tyres on Steel | Goodyear | 5mm / 5mm |

Replacement

| Typ | Tyre size | Type of tyre | Manufacturer | Tread depth |
|-----|----------------|-----------------------|--------------|-------------|
| E | 205/60 R16 96H | Summer tyres on Steel | Continental | 8 mm |

Legend: Tread depth information for the left tire is listed first, for the right tire it is listed second on the axle in the direction of travel.



Equipment

Standard equipment

- ABS with EBD
- Exterior mirrors, electrically adjustable and heated
- Battery, reinforced
- Rubberized flooring, front
- Diesel particulate filter (DPF)
- Tachometer
- Electronic Safety and Stability Program (ESP)
- Ford Easy Fuel
- Heated windshield
- Transmission: 6-speed transmission
- Glove compartment with lid
- Front air conditioning including semi-electronic recirculation system
- Cargo area lining, side, half-height
- Alternator/Generator
- Fog light
- Radio: Ford Audio System 2
- Sliding door at rear, right
- Side protection strips, plastic
- Safety brake assist
- Automatic door locking mechanism (45 sec.)
- Front spoiler lip
- Dust and pollen filter
- Power outlet: 12-volt connection on the front center console
- Front bumper and rear bumper end caps painted in body color
- Partition wall to the cargo area without window
- Lashing eyes
- Heat-insulating glazing, lightly tinted
- Auxiliary electric heater (PTC), front
- Driver's side airbag
- Exterior mirrors, narrow mirror format
- Hill start assist
- On-board computer including outside temperature display
- Double-leaf rear doors without windows
- Third brake light
- Front electric windows
- FordPass Connect
- Warranty: 2-year Ford new car warranty including Ford Assistance mobility guarantee
- Front interior lighting with delay function
- Paint finish: Solid
- Cargo area floor protection plastic, molded
- Steering column, adjustable in height and reach
- Center console, front
- Emergency brake light
- Wheels: Steel wheels 6.5 J x 16 with 205/60 R 16 tires and wheel trims
- Electro-mechanical power steering
- Front seat belts are height-adjustable
- Seats: Seat package 4
- Start-stop system
- Concealed storage compartment on dashboard
- Power outlet: 12-volt connection in storage compartment on dashboard (driver's side)
- Daytime running light
- Child safety lock on sliding doors
- Electronic immobilizer (EPATS)
- Central locking with remote control

Extra equipment

- Airbag: Front airbag for passenger
- Cargo area lighting, LED
- Front and rear parking pilot system
- Radio: Ford Audio System 9
- Headlight assistant with day/night sensor including automatically dimming interior mirror
- Floor covering: Front floor mats, all-weather floor mats (2-piece set)
- Camera-based pre-collision assist
- Spare wheel: Steel wheel
- Power outlet: 12-volt connection in the charging/luggage compartment

Brief expert findings

| | |
|----------------------|--|
| Documents submitted | At the time of the inspection, the vehicle registration certificate Part 2 (title) was available, but the vehicle registration certificate Part 1 (document) was not. (Copy) |
| VIN comparison | The vehicle identification number (VIN) was read from the vehicle and its conformity with the submitted documents was confirmed by the undersigned during the inspection. |
| Inspection | The inspection conditions were sufficient for the assessment of the vehicle. Lifting equipment and/or a pit were available for examining the vehicle. |
| Test drive | No test drive/shunting maneuver was carried out during the inspection of the vehicle. |
| Engine function test | An engine test run was performed. |
| readiness to drive | The vehicle was roadworthy at the time of inspection. |



Value reducing factors

| No. | Component group | Description |
|-----|-----------------|---|
| 1 | Misc. | Main inspection - No evidence - No deduction |
| 2 | Cab | Insulation lining (Marderschaden) - Damaged - Replace |
| 3 | Front bumper | Front bumper - Scratch(es) - Smart repair |
| 4 | Fog lamp | Fog lamp - front left side - Broken / torn - Replace |
| 5 | Body | Body (Firmenlogo und Anschrift) - Glued / labelled - De-glue / neutralise |
| 6 | Engine | Engine (Lampdasonde Kabel angefressen) - Damage caused by marten / rodent - Perform diagnosis |
| 7 | Vehicle glazing | Windscreen - Stone chips - repair according to calculation |

Wear and tear

| No. | Component group | Description |
|-----|--------------------------|--|
| 1 | Rear bumper | Rear bumper (unpainted) - Scratched - No deduction |
| 2 | Wing mirror - right side | Cap - Scratched - No deduction |
| 3 | Trim / covers | Boot lining - Scratched - No deduction |
| 4 | Boot lid / rear door | Rear door - right side - Scratch(es) - No deduction |
| 5 | Bonnet | Bonnet - Stone chips - No deduction |
| 6 | Body | Underbody panelling - Scratch(es) - No deduction |
| 7 | 2nd wheel set | 2nd wheel set (Stahlfelgen mit Winterbereifung) - No deduction |
| 8 | Sill - right side | Sill - Scratch(es) - Cover / polish |
| 9 | Door - front left side | Door - Scratch(es) - No deduction |
| 10 | Door - front left side | Door (Flugrost) - Conditioning |
| 11 | Front bumper | Parking sensors - centre - Scratch(es) - Cover / polish |
| 12 | Roof | Roof rail - right side - dent(s) - Smooth repair work |
| 13 | Wheel / tyres | Wheel cover - rear right side - Scratch(es) - No deduction |

The vehicle shows signs of wear and tear commensurate with its age and use.

Previous damages

| No. | Previous damage | Extent of damage (Net) |
|-----|---|------------------------|
| 1 | Rear, Provided by user / customer, from 29 May 2024 | 550,58 € |

Order/Scope of Order

An order was placed to prepare a sales report for the described vehicle. This report includes the following:

- Description of key vehicle information
- Documentation of equipment features
(*Delivery by third-party service providers*)
- Documentation of damage, defects, missing parts
- Documentation of prior damage, unrepaired prior damage, repainting
- A brief visual or functional inspection of the equipment details, if possible.
(*Functional testing of driver assistance systems is not included in the scope of services!*)
- a photographic documentation of the vehicle



Basis for the order

This product is based on the guidelines for vehicle returns and valuations published by Alphabet Fleet GmbH. The expert makes the specific findings in each individual case objectively, within the framework of the prescribed standards, based on their own expertise.

The vehicle inspection takes place in a fully assembled, unassembled state.

Damage or defects that can only be detected during disassembly/diagnostic work or through further investigation remain within the realm of prognostic risk. An increased risk exists due to concealed defects caused by fraudulent misrepresentation and which were not identifiable by the expert.

Damage or defects resulting from normal use or wear and tear of the vehicle will be accepted in accordance with the applicable standard.

There was no explicit identification or monetary consideration of the expected features within the product.

Features which, in their nature and extent, slightly exceed normal use but do not constitute unacceptable damage, will be documented and indicated as signs of wear, if applicable.

Damage or defects that, according to the applicable standard, can no longer be attributed to normal use or wear and tear are listed under "Value Reducing Factors" in the product description.

Depending on the product specification, a monetary ID can be provided. If this takes place, the costs can be 100% or pro rata depending on the vehicle's age and mileage.

Previous damages

According to available information previous damages were repaired at the vehicle. Traces of repairs, which allow conclusions about the area of repair, were not recognizable during the inspection.



Figure 1: Diagonal front (left)



Figure 2: Diagonal front (right)



Figure 3: Diagonal rear (left)



Figure 4: Diagonal rear (right)



Figure 5: Interior - front



Figure 6: Interior - rear



Figure 7: Instrument cluster



Figure 8: Instrument panel

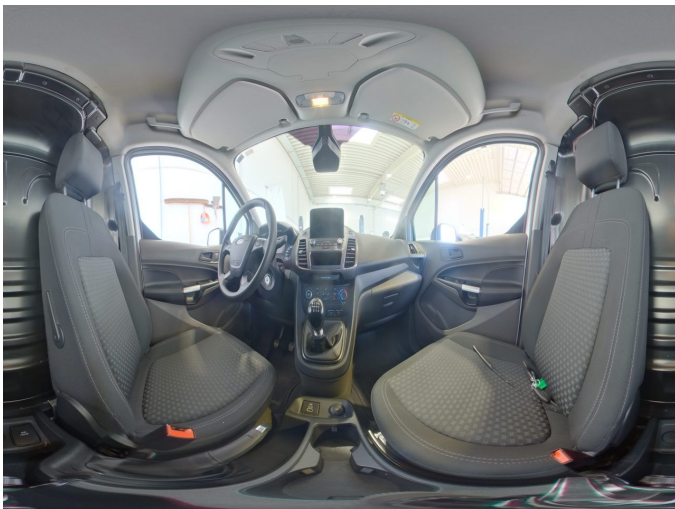


Figure 9: Interior 360° view



Figure 10: Cargo area



Figure 11: VIN



Figure 12: Mounted tyres

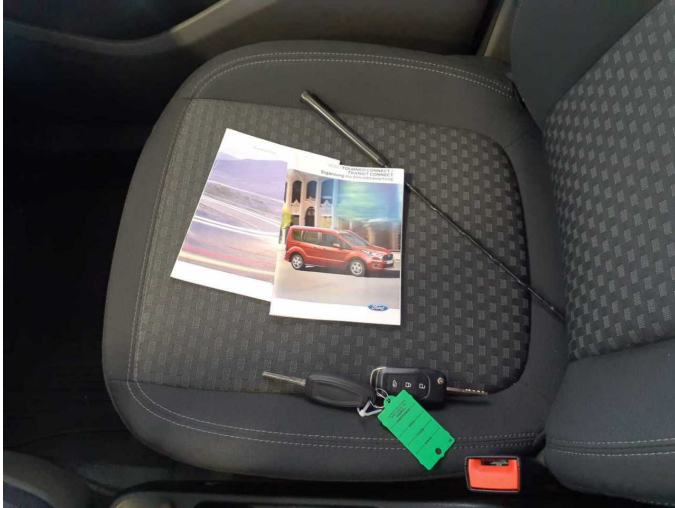


Figure 13: Documents



Figure 14: Additional tyres



Figure 15: Additional tyres



Figure 16: Navigation



Figure 17: Misc.



Figure 18: Misc.

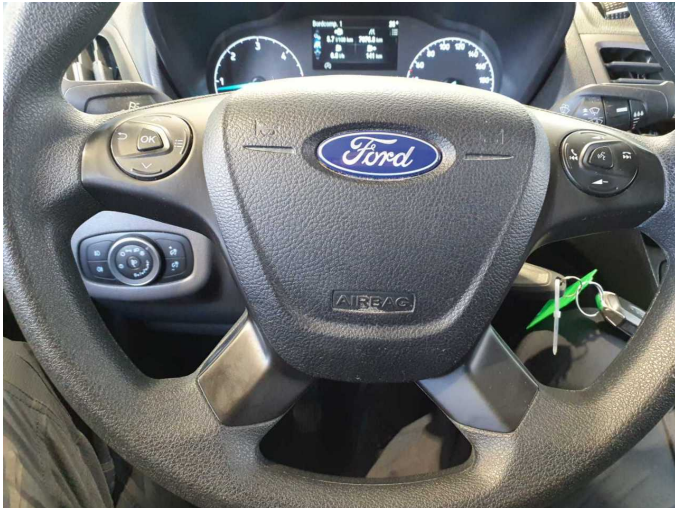


Figure 19: Misc.

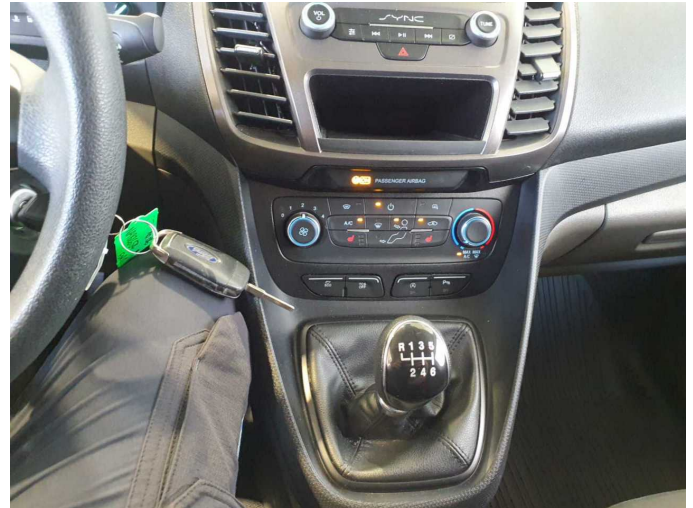


Figure 20: Misc.



Figure 21: Misc.



Figure 22: Misc.

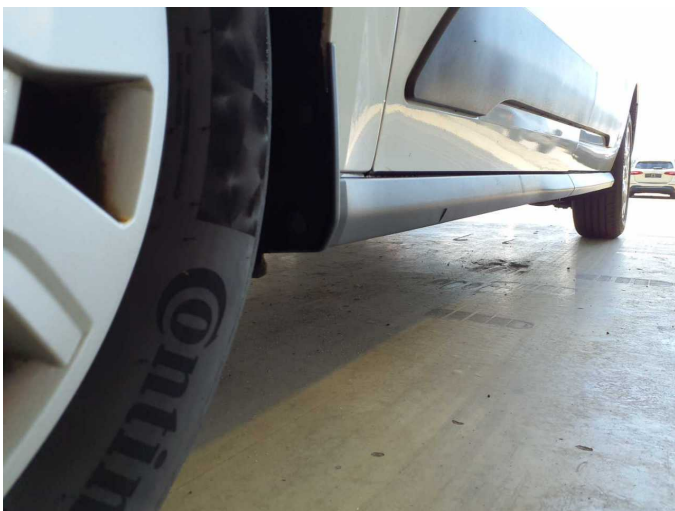


Figure 23: Misc.



Figure 24: Misc.



Figure 25: Misc.



Figure 26: Misc.



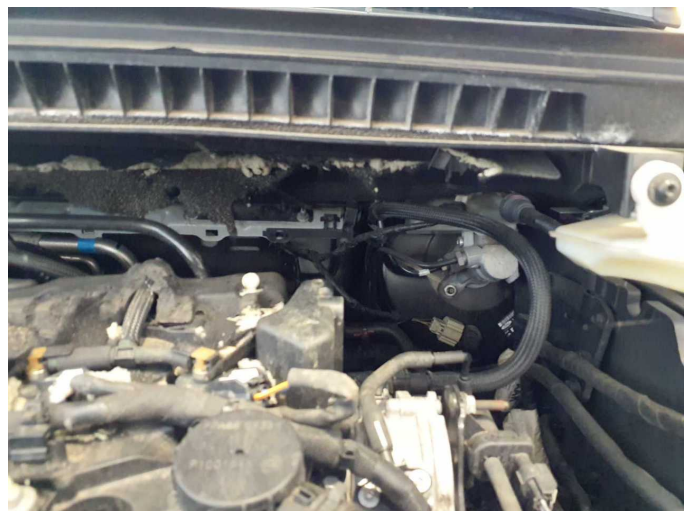
Figure 27: Misc.



Figure 28: Misc.



Damage 2: Cab: Insulation lining (Marderschaden) - Damaged - Replace



Damage 2: Cab: Insulation lining (Marderschaden) - Damaged - Replace



Damage 3: Front bumper: Front bumper - Scratch(es) - Smart repair



Damage 3: Front bumper: Front bumper - Scratch(es) - Smart repair



Damage 3: Front bumper: Front bumper - Scratch(es) - Smart repair



Damage 4: Fog lamp: Fog lamp - front left side - Broken / torn - Replace



Damage 4: Fog lamp: Fog lamp - front left side - Broken / torn - Replace



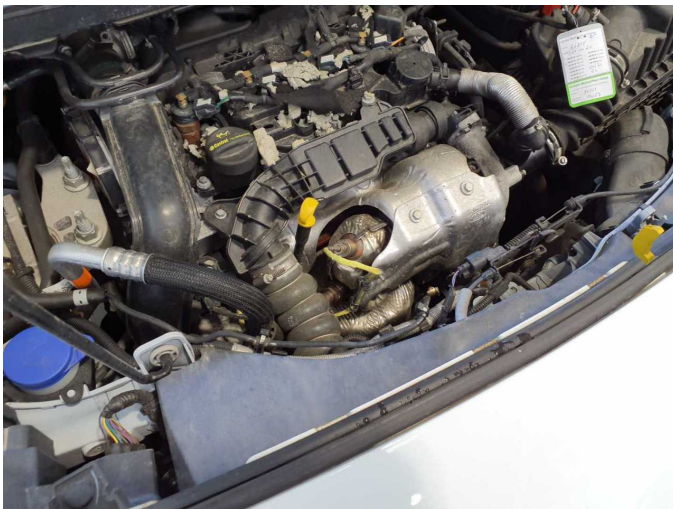
Damage 5: Body: Body (Firmenlogo und Anschrift) - Glued / labelled - De-glue / neutralise



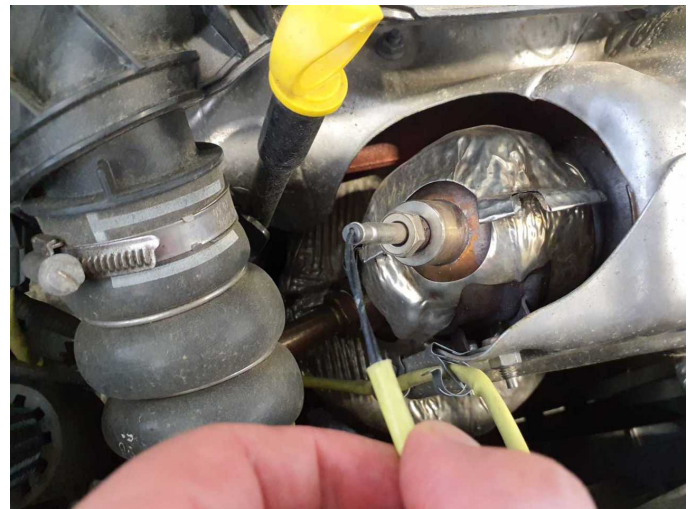
Damage 5: Body: Body (Firmenlogo und Anschrift) - Glued / labelled - De-glue / neutralise



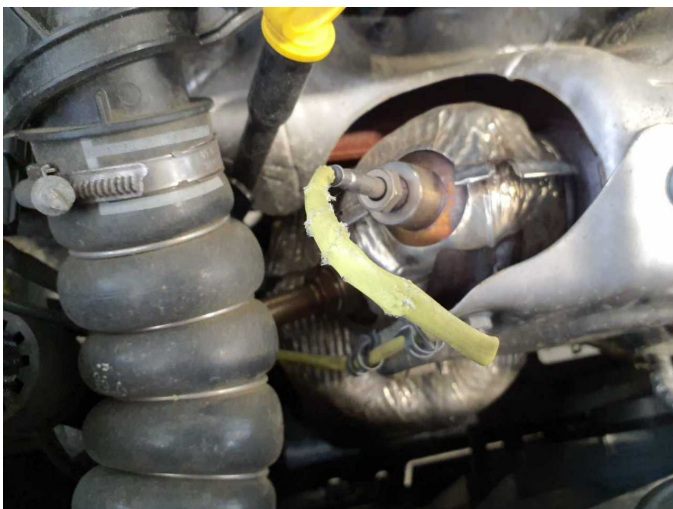
Damage 5: Body: Body (Firmenlogo und Anschrift) - Glued / labelled - De-glue / neutralise



Damage 6: Engine: Engine (Lampdasonde Kabel angefressen) - Damage caused by marten / rodent - Perform diagnosis



Damage 6: Engine: Engine (Lampdasonde Kabel angefressen) - Damage caused by marten / rodent - Perform diagnosis



Damage 6: Engine: Engine (Lampdasonde Kabel angefressen) - Damage caused by marten / rodent - Perform diagnosis



Damage 7: Vehicle glazing: Windscreen - Stone chips - repair according to calculation



Damage 7: Vehicle glazing: Windscreen - Stone chips - repair according to calculation



Wear and tear 8: Sill - right side: Sill - Scratch(es) - Cover / polish



Wear and tear 8: Sill - right side: Sill - Scratch(es) - Cover / polish



Wear and tear 9: Door - front left side: Door - Scratch(es) - No deduction



Wear and tear 9: Door - front left side: Door - Scratch(es) - No deduction



Wear and tear 9: Door - front left side: Door - Scratch(es) - No deduction



Wear and tear 11: Front bumper: Parking sensors - centre - Scratch(es) - Cover / polish



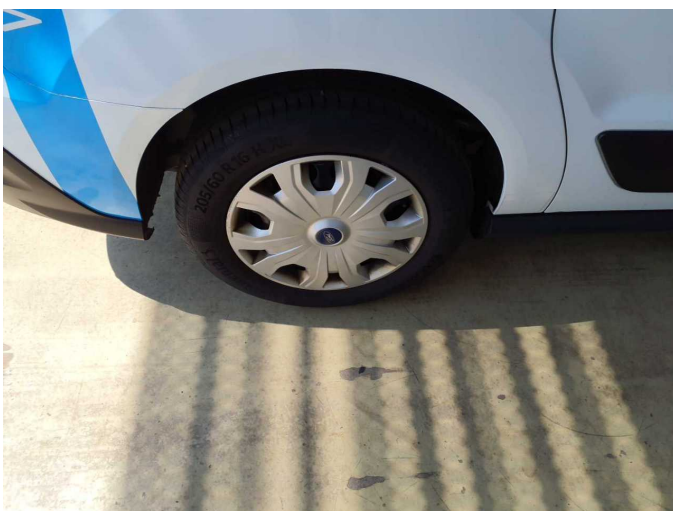
Wear and tear 11: Front bumper: Parking sensors - centre - Scratch(es) - Cover / polish



Wear and tear 12: Roof: Roof rail - right side - dent(s) - Smooth repair work



Wear and tear 12: Roof: Roof rail - right side - dent(s) - Smooth repair work



Wear and tear 13: Wheel / tyres: Wheel cover - rear right side - Scratch(es) - No deduction



Wear and tear 13: Wheel / tyres: Wheel cover - rear right side - Scratch(es) - No deduction