

Expertise

Protocol number: 46149895
Order No. / Reference: 26489486
Inspection date: 25 Jun 2026

Manufacturer: Opel

Model: Astra 1.2 Turbo Start/Stop Sports Tourer Business Edition

VIN: W0VBD8ESXL8035274



Vehicle details

Manufacturer / Type / Model / Equipment

Opel Astra 1.2 Turbo Start/Stop Sports Tourer Business Edition

Vehicle Identification number W0VBD8ESXL8035274

Mileage (Read) 24,262 km

First registration 1 Dec 2020

Number of holders 1

Power / Engine displacement 96 kw / 1,199 ccm

Fuel type / Cylinder Petrol / 3

Gearbox / Number of gears Manual / 6

Type of drive Front drive

Type of vehicle Station wagon

Colour / colour code Lava Rot Brilliant

Doors / Seats 5 / 5

Upholstery type Cloth

Colour of upholstery Black-Anthracite

Re-import no

readiness to drive Roadworthy



Vehicle details

Maintenance booklet / proof	digital proof / complete	Next maintenance in	88 %
Last service on / at	05/2025 at 20,647 km		
Key is / should be	2 / 2	FZG documents	ZB#2 (B) was available (copy), ZB#1 (S) was not available.
		Letter No.	FU003242
Previous damage / Accident	Detectable	Repainting	Detectable
Inspection conditions	sufficient	Lifting equipment / pit	No
Test drive	Not performed	Engine function test	Performed
readiness to drive	Roadworthy		
Manufacturer key number/ type code number	1844 / AKX 00045		
Emission standard	EURO6;WLTP;AM;PI/CI; M, N1 I	fine dust sticker	
Permitted total weight	1,870 kg	Empty weight	

Tyres

Mounted tyres

#	Tyre size	Type of tyre	Manufacturer	Tread depth
1)	195/65 R15 91H	Winter tyres on Light alloy	Goodyear	6mm / 6mm
2)	195/65 R15 91H	Winter tyres on Light alloy	Goodyear	7mm / 7mm

Additional tyres

#	Tyre size	Type of tyre	Manufacturer	Tread depth
1)	195/65 R15 91V	Summer tyres on Steel rim with wheel cover	Continental	6mm / 6mm
2)	195/65 R15 91V	Summer tyres on Steel rim with wheel cover	Continental	6mm / 6mm

Replacement

Typ	Tyre size	Type of tyre	Manufacturer	Tread depth
Tirefit		Expiration date 02/2025		

Legend: Tread depth information for the left tire is listed first, for the right tire it is listed second on the axle in the direction of travel.



Equipment

Standard equipment

- 2 ignition keys
- Airbag for driver and passenger side
- Airbag: Head airbags, 1st and 2nd row (outer seats)
- Anti-lock braking system (ABS)
- Electrically adjustable and heated exterior mirrors for driver and passenger side
- third brake light
- black roof rails
- Tachometer
- Electric windows front and rear
- Transmission: 6-speed manual transmission
- rear window wiper
- Instruments, black, with high-gloss chrome rings, 3.5" driver information display
- Front headrests
- LED headlights
- Light alloy wheels 7 J x 16 in "5-twin-spoke" design
- Steering column, height and reach adjustable
- Lighting equipment
- Otto particulate filter
- Pedals: Disengaging safety pedals
- Quickheat rapid heating system
- Tire repair kit
- Rear seat backrest folds forward in a 60:40 split
- Seat belts: Three-point seat belts in all seats
- Visibility equipment
- Start/Stop System
- Traction Control (TC) Plus
- Immobiliser
- Central locking with remote control and interior switches

- Storage compartments
- Airbag: Chest-pelvis side airbag for driver and front passenger side
- Automatic activation of the hazard warning lights
- Hill Start Assist
- On-board computer
- Roof design line, above in black
- Decorative trim strips Antelao Sand/Polar Silver
- Electronic Stability Program Plus (ESP Plus)
- Speed controller with limiter
- Back window, heater
- Interior lighting, front and rear
- trunk light
- Rear headrests (3)
- Cargo area cover
- LED daytime running lights
- Steering wheel: Comfort steering wheel with steering wheel remote control
- Fog light
- Parkpilot, rear parking aid
- Upholstery: Cloth
- Radio: Digital radio reception DAB/DAB+/DMB-R
- Tire pressure monitoring system
- Power steering
- Luggage compartment safety net
- Seats: Comfort seats, front
- 12V power outlet in the center console
- Pre-installation for child seat mounting system "ISOFIX"
- Heat-insulating glazing, green tinted, and windshield

Extra equipment

- Automatic climate control, two zones
- Steering wheel: Heated leather steering wheel and seat heating, multi-stage, driver and passenger
- Paint finish: Solid special color Solid Brilliant Lava Red
- Radio: Multimedia Navigation

Brief expert findings

Documents submitted	At the time of the inspection, the vehicle registration certificate Part 2 (title) was available, but the vehicle registration certificate Part 1 (document) was not. (Copy)
VIN comparison	The vehicle identification number (VIN) was read from the vehicle and its conformity with the submitted documents was confirmed by the undersigned during the inspection.
Inspection	The inspection conditions were sufficient for the assessment of the vehicle. No lifting equipment or pit was available for inspecting the vehicle. Therefore, inspection of the vehicle's underside was only possible to a limited extent.
Test drive	No test drive/shunting maneuver was carried out during the inspection of the vehicle.
Engine function test	An engine test run was performed.
readiness to drive	The vehicle was roadworthy at the time of inspection.



Value reducing factors

No.	Component group	Description
1	Equipment	Tirefit filler - Expired - Replace
2	Boot lid / rear door	Emblem - Missing - Replace
3	Door - rear left side	Door edge - Scratch(es) - Smart repair
4	Wing mirror - right side	Cap - Scratch(es) - Paint
5	Wing mirror - left side	Cap - Scratch(es) - Paint
6	Tail light	Tail lamp - left side - Leaking - Replace
7	Door - front left side	Door - Dent / paintcoat damage - Repair and paint
8	Bonnet	Bonnet - Dent / paintcoat damage - Repair and paint

Wear and tear

No.	Component group	Description
1	Trim / covers	Boot lid - interior trim - Scratch(es) - No deduction
2	Rear bumper	Rear bumper - Scratch(es) - No deduction
3	Vehicle glazing	Windscreen - Stone chips - No deduction

The vehicle shows signs of wear and tear commensurate with its age and use.

Missing parts

Description

Engine - Engine cover

Previous damages

No.	Previous damage	Extent of damage (Net)
1	Rear, Professionally repaired, Invoice of repair done	Non-existent

Repainting

No. Repainting

1 Boot lid / rear door, Professionally carried out, Invoice of repair done

Paint coat thickness measurement

Boot lid / rear door 161 µm |

Order/Scope of Order

An order was placed to prepare a sales report for the described vehicle. This report includes the following:

- Description of key vehicle information
- Documentation of equipment features
(*Delivery by third-party service providers*)
- Documentation of damage, defects, missing parts
- Documentation of prior damage, unrepaired prior damage, repainting
- A brief visual or functional inspection of the equipment details, if possible.
(*Functional testing of driver assistance systems is not included in the scope of services!*)
- a photographic documentation of the vehicle



Basis for the order

This product is based on the guidelines for vehicle returns and valuations published by Alphabet Fleet GmbH. The expert makes the specific findings in each individual case objectively, within the framework of the prescribed standards, based on their own expertise.

The vehicle inspection takes place in a fully assembled, unassembled state.

Damage or defects that can only be detected during disassembly/diagnostic work or through further investigation remain within the realm of prognostic risk. An increased risk exists due to concealed defects caused by fraudulent misrepresentation and which were not identifiable by the expert.

Damage or defects resulting from normal use or wear and tear of the vehicle will be accepted in accordance with the applicable standard.

There was no explicit identification or monetary consideration of the expected features within the product.

Features which, in their nature and extent, slightly exceed normal use but do not constitute unacceptable damage, will be documented and indicated as signs of wear, if applicable.

Damage or defects that, according to the applicable standard, can no longer be attributed to normal use or wear and tear are listed under "Value Reducing Factors" in the product description.

Depending on the product specification, a monetary ID can be provided. If this takes place, the costs can be 100% d or pro rata depending on the vehicle's age and mileage.

Previous damages

Professionally repaired previous damages were found at the vehicle.

Comments

- Die Unterbodenbesichtigung war nur ebenerdig & eingeschränkt möglich. Mehrkosten möglich.
- Für den montierten Radsatz wurde kein Nachweis erbracht.
- Winterradsatz ist kein Bestandteil des Auslieferungsumfangs.



Figure 1: Diagonal front (left)



Figure 2: Diagonal front (right)



Figure 3: Diagonal rear (left)



Figure 4: Diagonal rear (right)



Figure 5: Interior - front



Figure 6: Interior - rear



Figure 7: Instrument cluster



Figure 8: Instrument panel



Figure 9: Interior 360° view



Figure 10: Cargo area

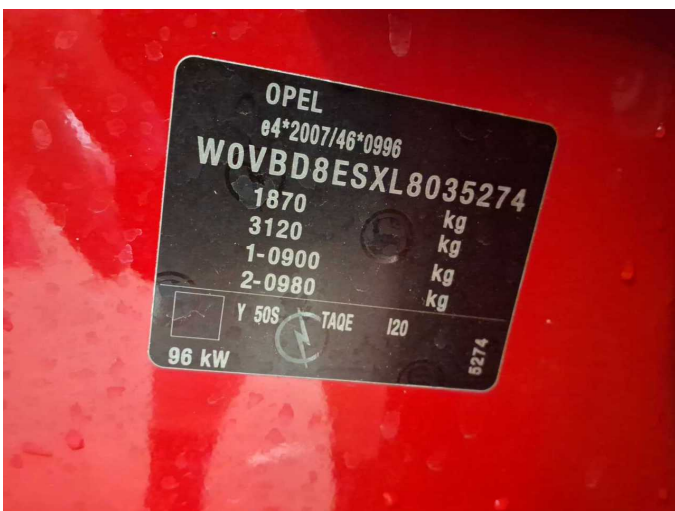


Figure 11: VIN



Figure 12: Mounted tyres



Figure 13: Documents

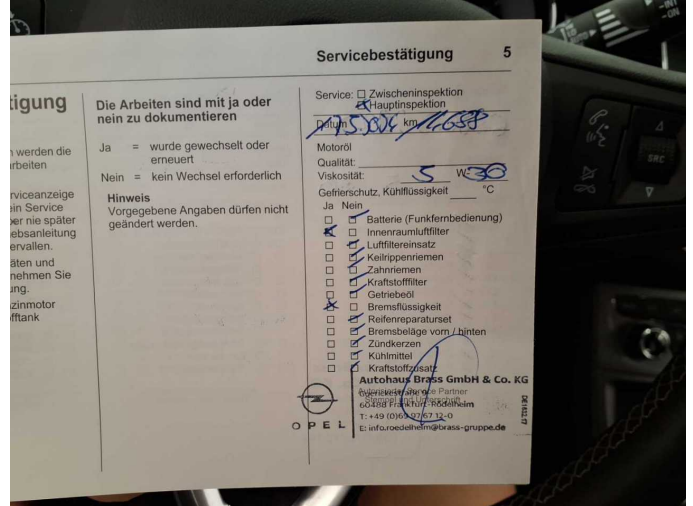


Figure 14: Documents

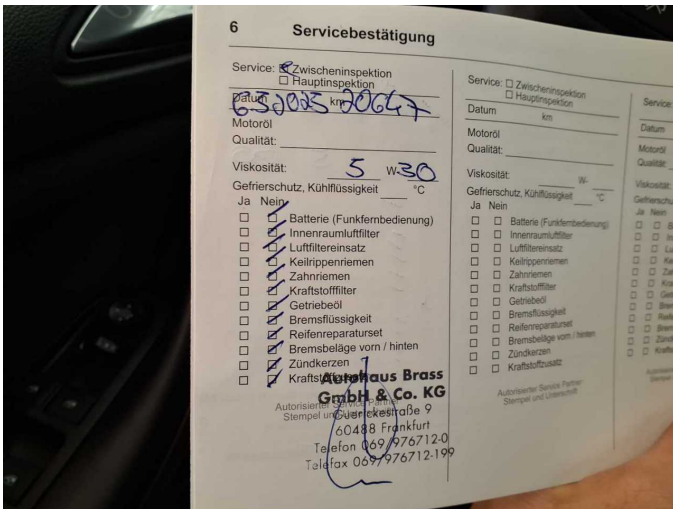


Figure 15: Documents



Figure 16: Documents



Figure 17: Additional tyres



Figure 18: Navigation



Figure 19: Misc.



Figure 20: Misc.



Figure 21: Misc.



Figure 22: Misc.



Figure 23: Misc.



Figure 24: Misc.



Figure 25: Misc.



Figure 26: Misc.

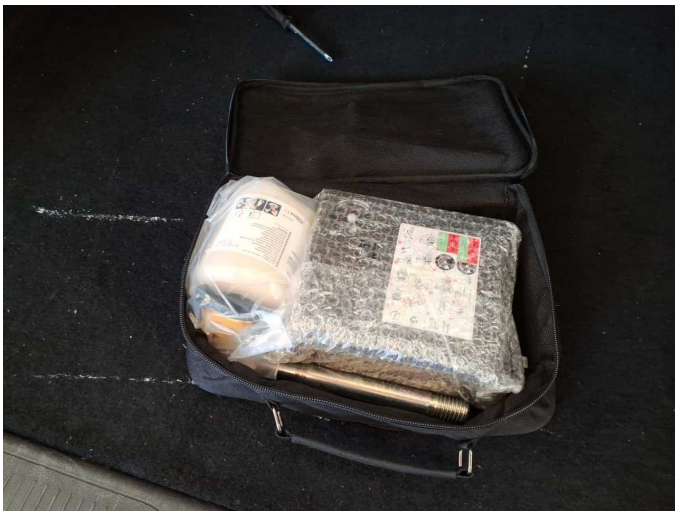
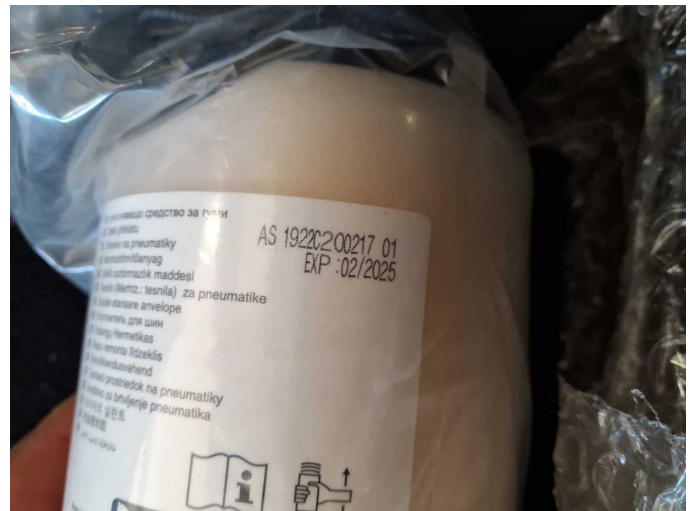
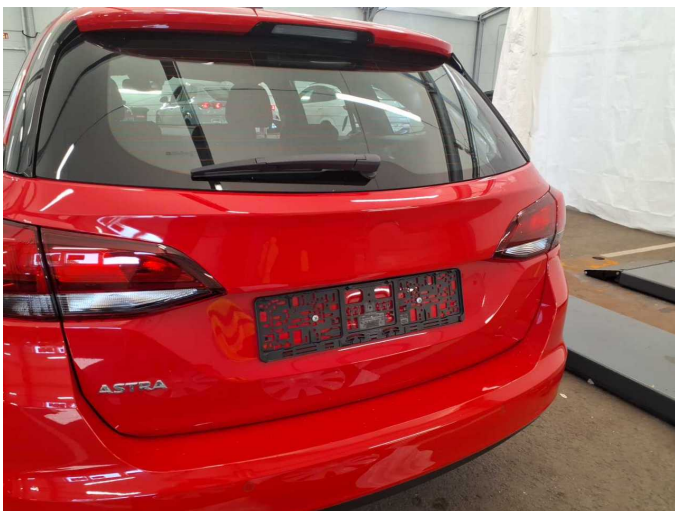


Figure 27: Misc.



Damage 1: Equipment: Tirefit filler - Expired - Replace



Damage 2: Boot lid / rear door: Emblem - Missing - Replace



Damage 2: Boot lid / rear door: Emblem - Missing - Replace



Damage 3: Door - rear left side: Door edge - Scratch(es) - Smart repair



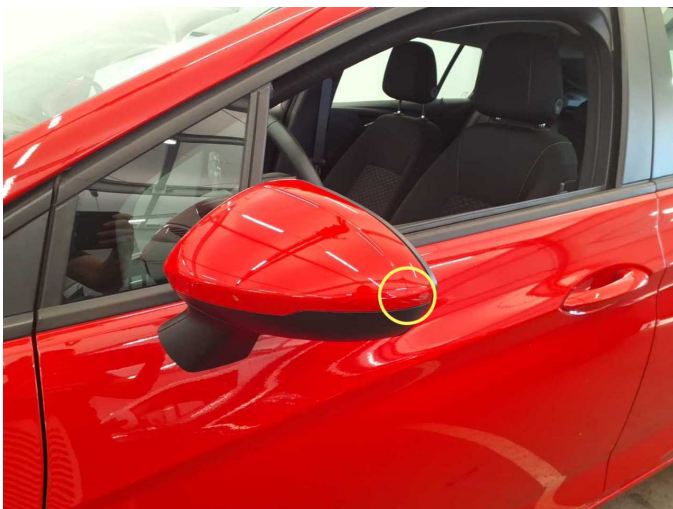
Damage 3: Door - rear left side: Door edge - Scratch(es) - Smart repair



Damage 4: Wing mirror - right side: Cap - Scratch(es) - Paint



Damage 4: Wing mirror - right side: Cap - Scratch(es) - Paint



Damage 5: Wing mirror - left side: Cap - Scratch(es) - Paint



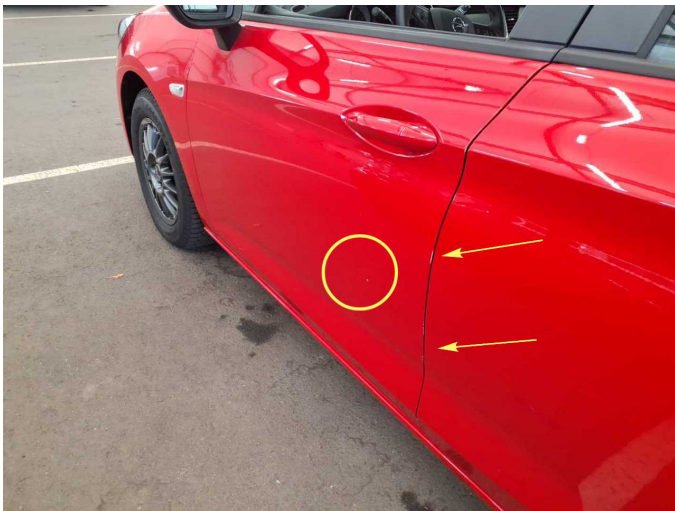
Damage 5: Wing mirror - left side: Cap - Scratch(es) - Paint



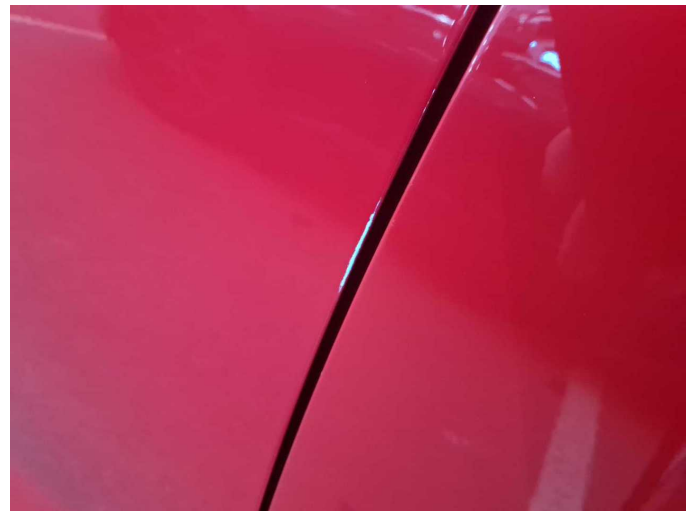
Damage 6: Tail light: Tail lamp - left side - Leaking - Replace



Damage 6: Tail light: Tail lamp - left side - Leaking - Replace



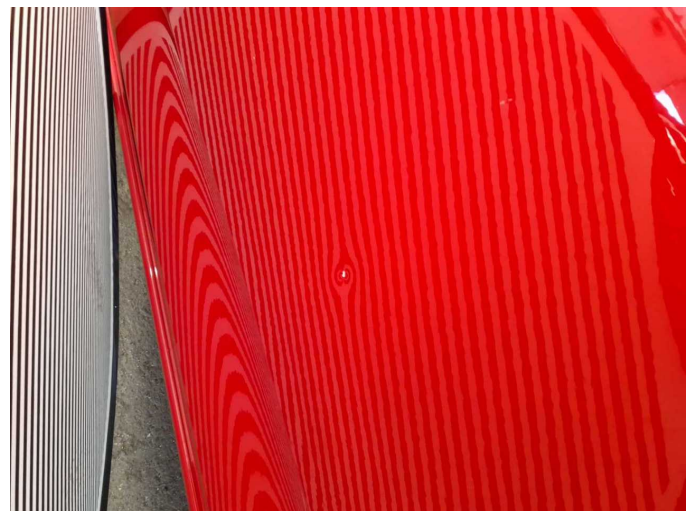
Damage 7: Door - front left side: Door - Dent / paintcoat damage - Repair and paint



Damage 7: Door - front left side: Door - Dent / paintcoat damage - Repair and paint



Damage 7: Door - front left side: Door - Dent / paintcoat damage - Repair and paint



Damage 7: Door - front left side: Door - Dent / paintcoat damage - Repair and paint



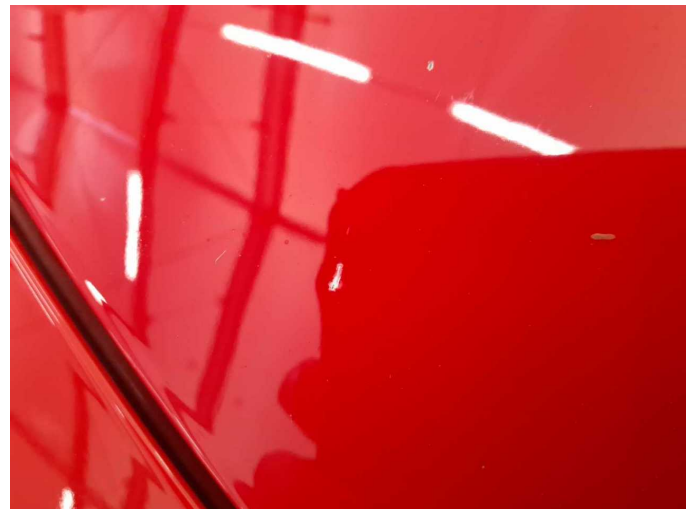
Damage 7: Door - front left side: Door - Dent / paintcoat damage - Repair and paint



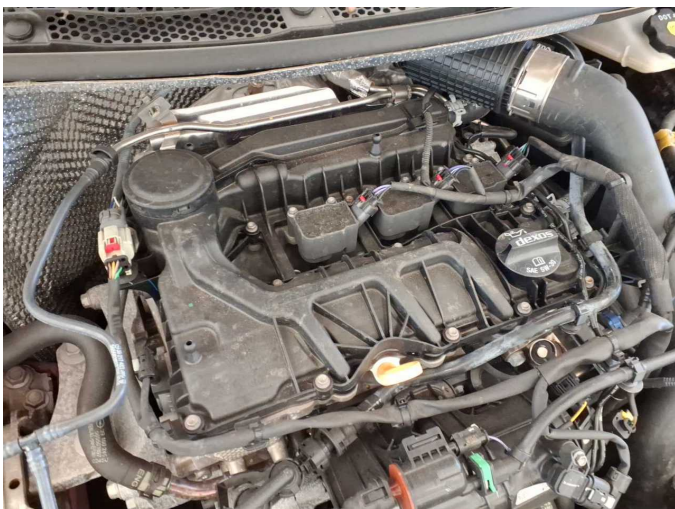
Damage 8: Bonnet: Bonnet - Dent / paintcoat damage - Repair and paint



Damage 8: Bonnet: Bonnet - Dent / paintcoat damage - Repair and paint



Damage 8: Bonnet: Bonnet - Dent / paintcoat damage - Repair and paint



Missing part 1: Engine: Engine cover - Missing - Replace



Repainting 1: Boot lid / rear door



Repainting 1: Boot lid / rear door



Wartungshistorie

(gemäß Auftraggeber Informationen)

Fahrgestellnummer: W0VBD8ESXL8035274

Hersteller / Modell: OPEL OPEL Astra 1.2 Turbo Start/Stop Sports Tourer Business Edition

Datum	KM-Stand	Beschreibung
22.09.2025	24.172	Systemtest/Eigendiagnose
06.05.2025	20.647	Motoröl b. Wartung; Ölfilter ern; Regelwartungsdienst; Wartung Sonstiges
17.05.2024	14.688	Bremsflüssigkeit; Bremsflüssigkeit ern; Motoröl b. Wartung; Ölfilter ern; Regelwartungsdienst; Wartung Sonstiges