

Expertise

Protocol number: 45790581
Order No. / Reference: 26382093
Inspection date: 1 Jun 2026

Manufacturer: Volvo

Model: XC90 T8 AWD Recharge Core

VIN: YV1LFH7V8R1208303



Vehicle details

Manufacturer / Type / Model / Equipment

Volvo XC90 T8 AWD Recharge Core

Vehicle Identification number YV1LFH7V8R1208303

Mileage (Read) 45,689 km

First registration 18 Dec 2023

Number of holders 1

Power / Engine displacement 228 kw / 1,969 ccm

Fuel type / Cylinder Hybr.B/E ext.auf1 / 4

Gearbox / Number of gears Automatic / 8

Type of drive All-wheel drive

Type of vehicle SUV

Colour / colour code Denim Blau-Metallic

Doors / Seats 5 / 7

Upholstery type Leather

Colour of upholstery Anthracite



Vehicle details

| | | | |
|--|-------------------------------|--------------------------------|--|
| Maintenance booklet / proof | digital proof / complete | Next maintenance in | 198 Tag(e) |
| Last service on / at | 12/2025 at 38,422 km | | |
| Key is / should be | 2 / 2 | FZG documents | ZB#2 (B) was available (copy), ZB#1 (S) was not available. |
| | | Letter No. | GY627163 |
| Previous damage / Accident | None detectable | Repainting | None detectable |
| Inspection conditions | sufficient | Lifting equipment / pit | yes |
| Test drive | Not performed | Engine function test | Performed |
| Manufacturer key number/ type code number | 9101 / BUL 00012 | | |
| Emission standard | EURO6;WLTP;EA;PI/CI;M, N1, N2 | fine dust sticker | |
| Permitted total weight | 2,950 kg | Empty weight | |

Tyres

| Mounted tyres | | | | |
|------------------|-----------------|-----------------------------|--------------|-------------|
| # | Tyre size | Type of tyre | Manufacturer | Tread depth |
| 1) | 235/55 R19 105V | Summer tyres on Light alloy | Continental | 6mm / 6mm |
| 2) | 235/55 R19 105V | Summer tyres on Light alloy | Continental | 6mm / 6mm |
| Additional tyres | | | | |
| # | Tyre size | Type of tyre | Manufacturer | Tread depth |
| 1) | 235/55 R19 105V | Winter tyres on Light alloy | Continental | 6mm / 6mm |
| 2) | 235/55 R19 105V | Winter tyres on Light alloy | Continental | 7mm / 7mm |

Legend: Tread depth information for the left tire is listed first, for the right tire it is listed second on the axle in the direction of travel.

TÜV SÜD Auto Partner GmbH
Wiesenring 2
04159 Leipzig

Inspection location
Hartmann Fleet Professionals GmbH
Industriestraße 11
36272 Niederaula



Equipment



Standard equipment

- ABS - Anti-lock Braking System
- Passenger side airbag can be deactivated
- Active safety belts with belt tensioners
- Aluminum loading sill protector in the luggage compartment
- Electrically folding exterior mirrors
- Electrically adjustable exterior mirrors
- Outdoor temperature display
- Hill Descent Control (HDC)
- Hill Start Assist (HSA)
- LED turn signals integrated into the exterior mirrors
- Brake energy recuperation
- Chrome applications on the rear of the vehicle
- Chrome trim strip in the door sill area with Recharge lettering
- Deactivating the high-voltage battery
- Digital Instrumentation 2nd Gen.
- Driver Awareness
- Aluminum door sill plates with Recharge lettering, front and rear
- Advanced air purification system with fine dust filtration according to air quality standard PM2.5
- Automatic emergency braking
- Front grille in waterfall design in chrome
- Transmission: 8-speed automatic transmission
- Automatic tailgate
- Heated rear window
- Interior and exterior mirrors automatically dimming
- ISOFIX mounting for the outer rear seats
- Keyless Start
- Automatic climate control with 4-zone temperature control
- Headrests (7)
- Charging box under the cargo floor
- Charging cable Schuko/Type 2 (Mode 2)
- Steering wheel adjustable for height and reach
- Steering wheel: Multifunction buttons on the steering wheel
- Front center armrest including cup holder
- Otto particulate filter
- Parking ticket holder
- Upholstery: Leather/leatherette comfort seats
- Radio accessories: Smartphone integration Apple CarPlay
- Rain sensor with automatic light function
- Tire pressure monitoring system
- Wheels: 19" 5-spoke alloy wheels, diamond cut/high-gloss black
- Safety Assistance
- Speed-sensitive power steering
- Seats: Third row of seats (7-seater)
- Seats: Driver and front passenger seats are height-adjustable (electrically)
- Seats: Rear bench seat of the 2nd row in a 40/20/40 ratio or completely foldable
- Electric auxiliary heater with timer
- Power socket
- Acoustic Vehicle Alerting System (AVAS)
- Airbags
- All-wheel drive (AWD)
- Android infotainment system
- Armrests with integrated storage compartment and cup holders for the 3rd row of seats (left and right)
- Heated exterior mirrors and rear window (automatic)
- Attachment system for carrier bags in the luggage compartment
- Fog sensor for automatic activation of the defroster function
- On-board computer
- third brake light
- Chrome applications in the front bumper
- Roof edge spoiler
- Aluminum roof rails (integrated)
- Digital services including Google Maps navigation system
- Driver Assistance
- Parking assistance, front and rear
- Electronic differential lock
- Electronic Stability Control
- Electric windows front and rear
- Chrome window surround
- Bottle holder in the luggage compartment
- Luggage compartment partition net
- Seat belt height adjustment front and rear (2nd row of seats)
- rear window wiper
- Intelligent driver information system
- Keyless Drive (electronic access system)
- Child safety lock for the rear doors (electric)
- Air conditioning for the 3rd row of seats
- Headrests of the 2nd row of seats can be folded down (electrically)
- Cargo area roller blind (semi-automatic)
- Steering wheel: Steering wheel heating
- Illuminated makeup mirror for driver and front passenger
- Emergency brake lights
- Electric parking brake
- Pollen filter
- Radio: High Performance Sound audio system
- Radio accessories: Two USB-C ports on the back of the center console
- Run-off Road Protection
- Wheels: Tire sealant
- Rear view camera
- Whiplash Protection System (WHIPS)
- Safety braking system with disc brakes all around (internally ventilated)
- Seats: Child seat integrated in the middle rear seat (2nd row).
- Seats: Heated rear seats (outer seats of the 2nd row)
- Seats: Heated front seats
- Start/Stop technology
- Phone: Inductive smartphone charging system



- Textile floor mat for the 3rd row of seats
- Glazing: Colored glazing
- Preparation for Trailer Stability Assist (TSA)
- Immobiliser
- Central locking system with two remote controls and integrated emergency keys

Extra equipment

- Windscreen, heater
- Glazing: Side and rear windows tinted (from the B-pillar back)

- First aid kit and warning triangle
- Lashing eyes in the luggage compartment (foldable)
- Warning tone/indicator when seat belts are not fastened (for all seats)

- Paint finish: Metallic paint

Brief expert findings

| | |
|----------------------|--|
| Documents submitted | At the time of the inspection, the vehicle registration certificate Part 2 (title) was available, but the vehicle registration certificate Part 1 (document) was not. (Copy) |
| VIN comparison | The vehicle identification number (VIN) was read from the vehicle and its conformity with the submitted documents was confirmed by the undersigned during the inspection. |
| Inspection | The inspection conditions were sufficient for the assessment of the vehicle. Lifting equipment and/or a pit were available for examining the vehicle. |
| Test drive | No test drive/shunting maneuver was carried out during the inspection of the vehicle. |
| Engine function test | An engine test run was performed. |

Value reducing factors

| No. | Component group | Description |
|-----|------------------------|--|
| 1 | Door - front left side | Door edge - Scratch(es) - Smart repair |
| 2 | Door - front left side | Door (Rahmen Leiste) - dent(s) - Replace |
| 3 | Body | Body - Damage by hail - Smooth repair work |

Wear and tear

| No. | Component group | Description |
|-----|-------------------------|---|
| 1 | Front bumper | Front bumper - Stone chips - No deduction |
| 2 | Wing mirror - left side | Cap - Soiled - No deduction |

The vehicle shows signs of wear and tear commensurate with its age and use.

Order/Scope of Order

An order was placed to prepare a sales report for the described vehicle. This report includes the following:

- Description of key vehicle information
- Documentation of equipment features
(*Delivery by third-party service providers*)
- Documentation of damage, defects, missing parts
- Documentation of prior damage, unrepaired prior damage, repainting
- A brief visual or functional inspection of the equipment details, if possible.
(*Functional testing of driver assistance systems is not included in the scope of services!*)
- a photographic documentation of the vehicle



Basis for the order

This product is based on the guidelines for vehicle returns and valuations published by Alphabet Fleet GmbH. The expert makes the specific findings in each individual case objectively, within the framework of the prescribed standards, based on their own expertise.

The vehicle inspection takes place in a fully assembled, unassembled state.

Damage or defects that can only be detected during disassembly/diagnostic work or through further investigation remain within the realm of prognostic risk. An increased risk exists due to concealed defects caused by fraudulent misrepresentation and which were not identifiable by the expert.

Damage or defects resulting from normal use or wear and tear of the vehicle will be accepted in accordance with the applicable standard.

There was no explicit identification or monetary consideration of the expected features within the product.

Features which, in their nature and extent, slightly exceed normal use but do not constitute unacceptable damage, will be documented and indicated as signs of wear, if applicable.

Damage or defects that, according to the applicable standard, can no longer be attributed to normal use or wear and tear are listed under "Value Reducing Factors" in the product description.

Depending on the product specification, a monetary ID can be provided. If this takes place, the costs can be 100% d or pro rata depending on the vehicle's age and mileage.

Previous damages

No apparent prior damage that had been repaired could be found on the vehicle.

Comments

Der beiliegende Winterradsatz ist kein Bestandteil der Ausstattung.



Figure 1: Diagonal front (left)



Figure 2: Diagonal front (right)



Figure 3: Diagonal rear (left)



Figure 4: Diagonal rear (right)

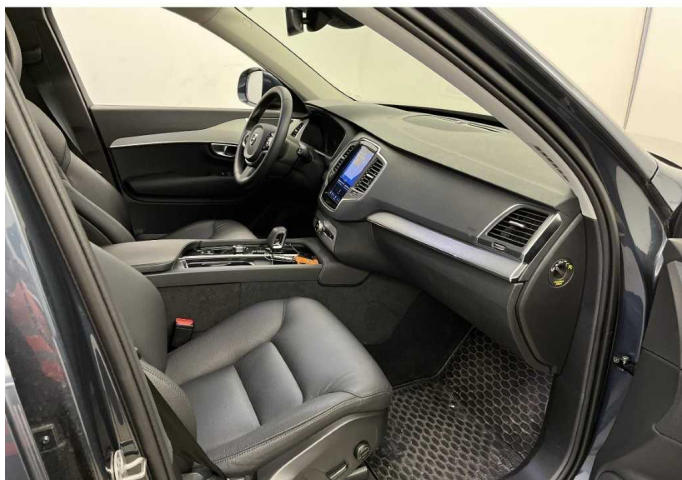


Figure 5: Interior - front



Figure 6: Interior - rear



Figure 7: Instrument cluster



Figure 8: Instrument panel



Figure 9: Interior 360° view

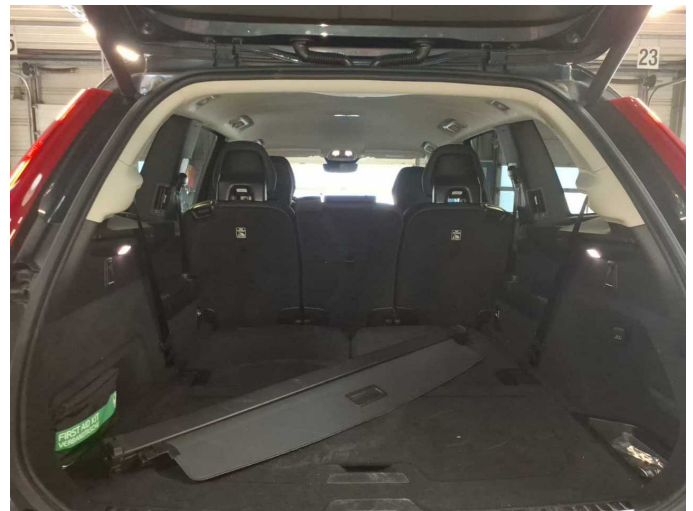


Figure 10: Cargo area

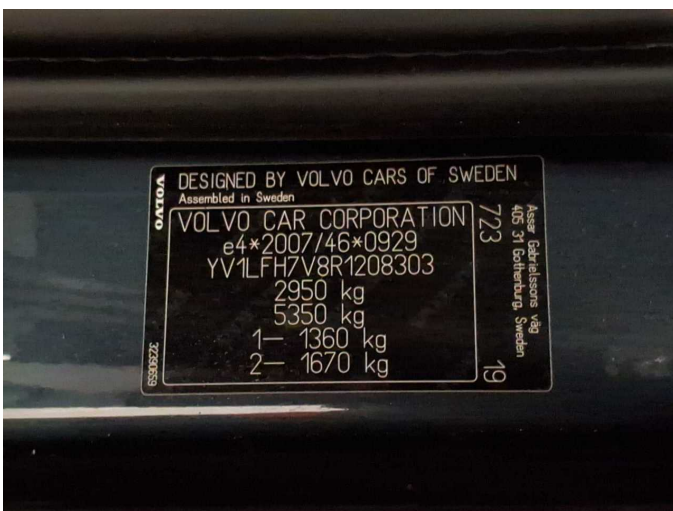


Figure 11: VIN



Figure 12: Mounted tyres

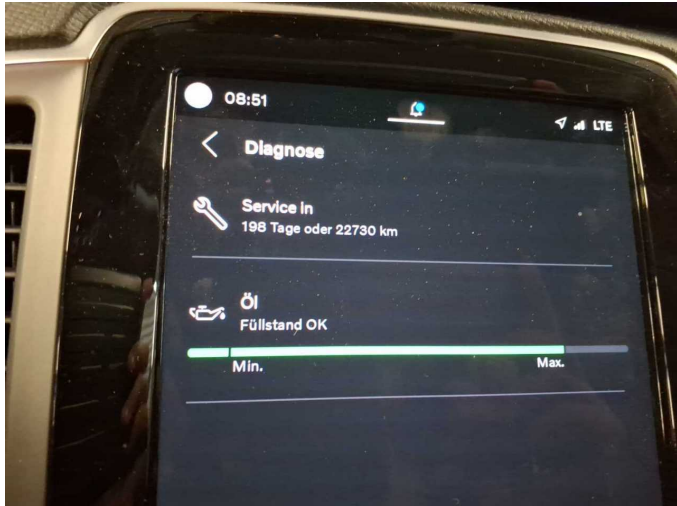


Figure 13: Documents



Figure 14: Documents

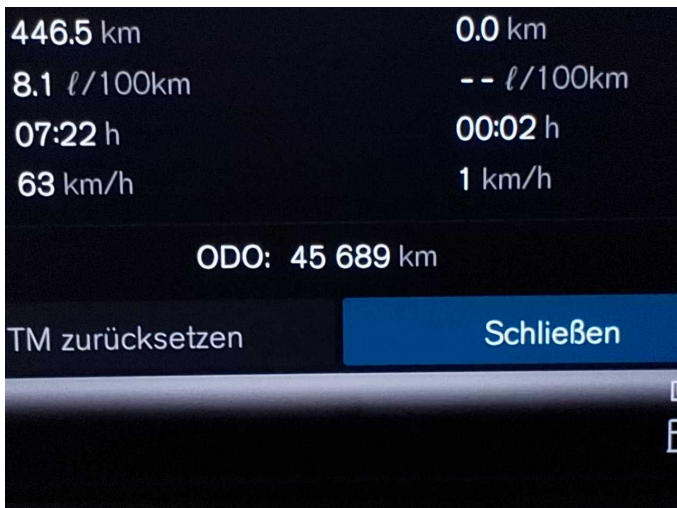


Figure 15: Documents



Figure 16: Additional tyres



Figure 17: Navigation



Figure 18: Misc.



Figure 19: Misc.



Figure 20: Misc.



Figure 21: Misc.



Figure 22: Misc.



Figure 23: Misc.

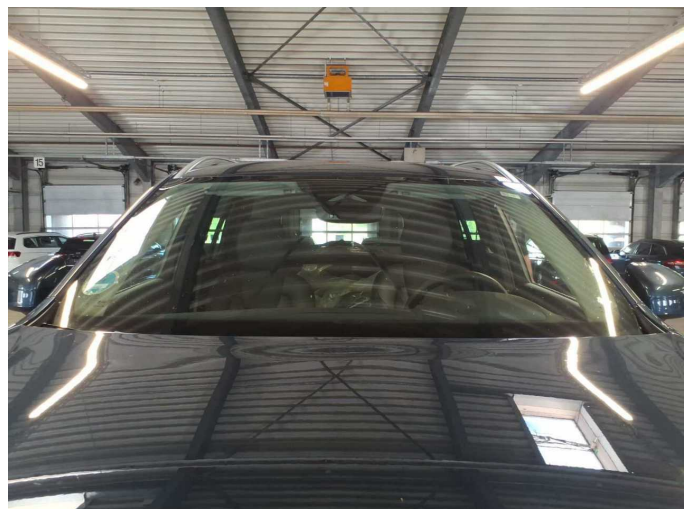


Figure 24: Misc.



Figure 25: Misc.



Figure 26: Misc.

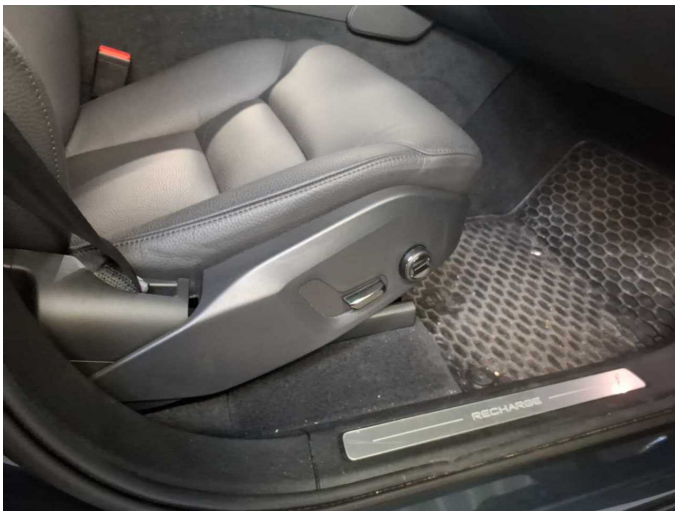


Figure 27: Misc.



Figure 28: Misc.



Figure 29: Misc.



Figure 30: Misc.



Figure 31: Misc.



Figure 32: Misc.



Figure 33: Misc.



Figure 34: Misc.



Figure 35: Misc.



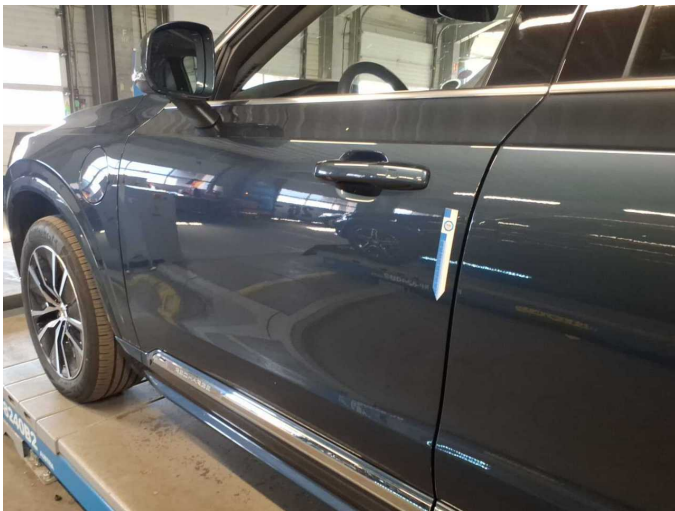
Figure 36: Misc.



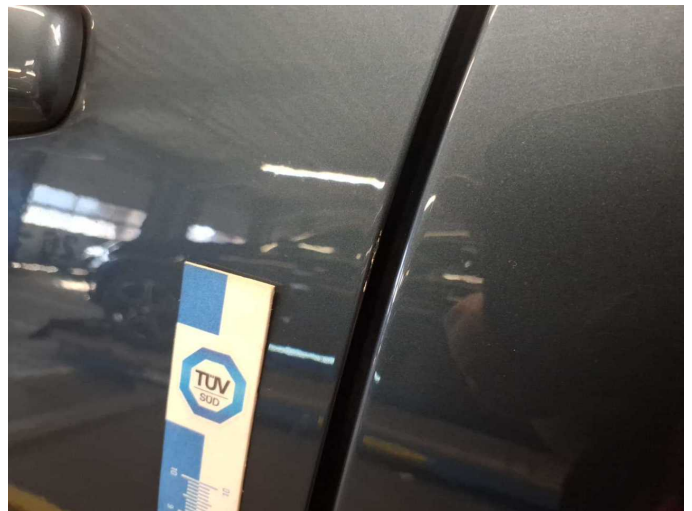
Figure 37: Misc.



Figure 38: Misc.



Damage 1: Door - front left side: Door edge - Scratch(es) - Smart repair



Damage 1: Door - front left side: Door edge - Scratch(es) - Smart repair



Damage 1: Door - front left side: Door edge - Scratch(es) - Smart repair



Damage 1: Door - front left side: Door edge - Scratch(es) - Smart repair



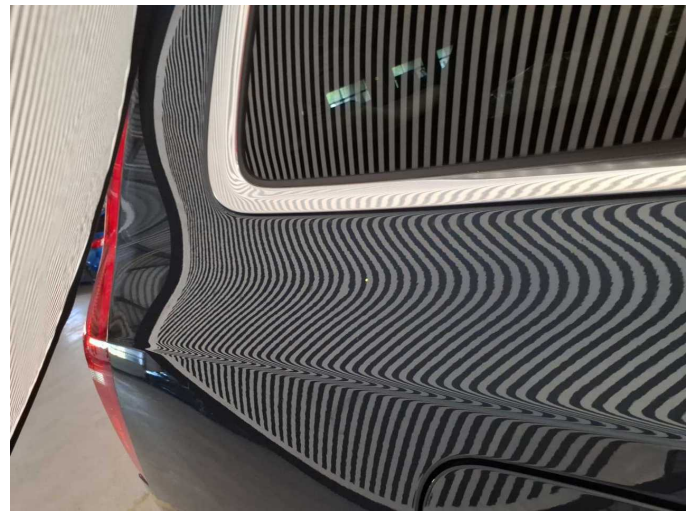
Damage 2: Door - front left side: Door (Rahmen Leiste) - dent(s) - Replace



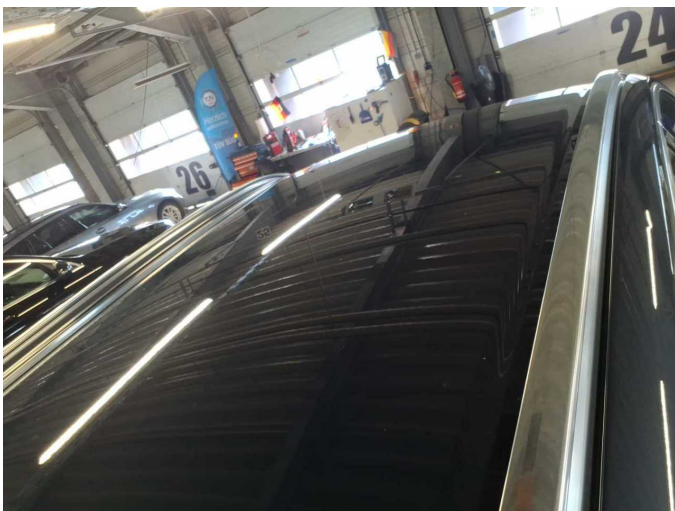
Damage 2: Door - front left side: Door (Rahmen Leiste) - dent(s) - Replace



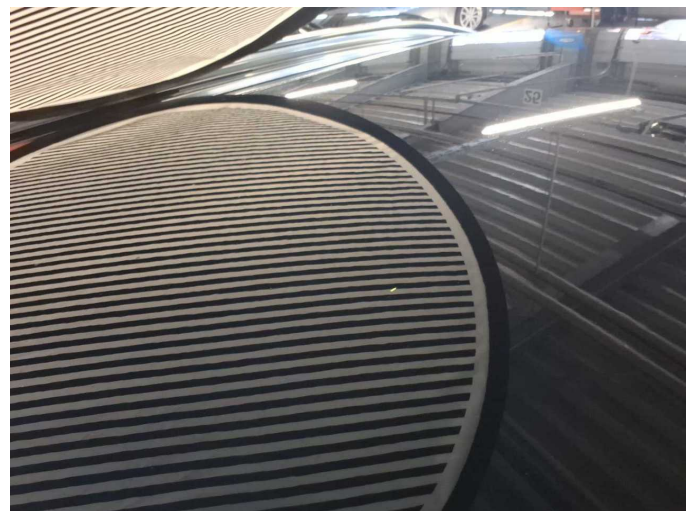
Damage 3: Body: Body - Damage by hail - Smooth repair work



Damage 3: Body: Body - Damage by hail - Smooth repair work



Damage 3: Body: Body - Damage by hail - Smooth repair work



Damage 3: Body: Body - Damage by hail - Smooth repair work



Damage 3: Body: Body - Damage by hail - Smooth repair work



Damage 3: Body: Body - Damage by hail - Smooth repair work



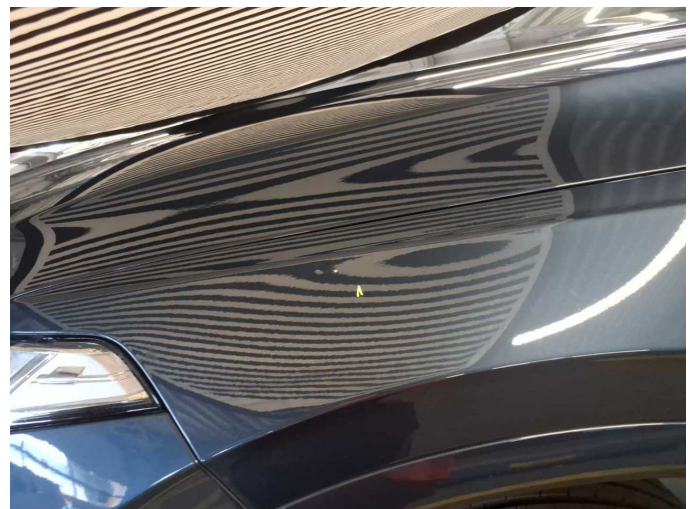
Damage 3: Body: Body - Damage by hail - Smooth repair work



Damage 3: Body: Body - Damage by hail - Smooth repair work



Damage 3: Body: Body - Damage by hail - Smooth repair work



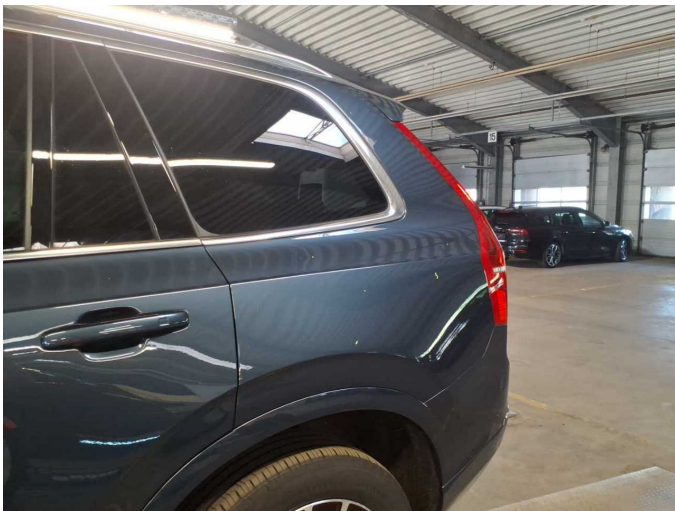
Damage 3: Body: Body - Damage by hail - Smooth repair work



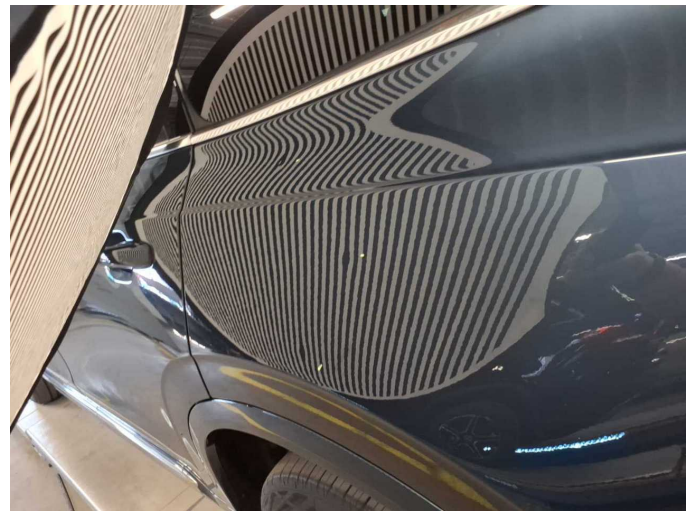
Damage 3: Body: Body - Damage by hail - Smooth repair work



Damage 3: Body: Body - Damage by hail - Smooth repair work



Damage 3: Body: Body - Damage by hail - Smooth repair work



Damage 3: Body: Body - Damage by hail - Smooth repair work



Damage 3: Body: Body - Damage by hail - Smooth repair work



Damage 3: Body: Body - Damage by hail - Smooth repair work



Wear and tear 1: Front bumper: Front bumper - Stone chips - No deduction



Wear and tear 2: Wing mirror - left side: Cap - Soiled - No deduction



Wear and tear 2: Wing mirror - left side: Cap - Soiled - No deduction



Wartungshistorie

(gemäß Auftraggeber Informationen)

Fahrgestellnummer: YV1LFH7V8R1208303

Hersteller / Modell: VOLVO VOLVO XC90 T8 AWD Recharge Core

| Datum | KM-Stand | Beschreibung |
|------------|----------|---|
| 15.12.2025 | 38.422 | Bremsflüssigkeit; Bremsflüssigkeit ern; Luftfiltereinsatz ern; Motoröl b. Wartung; Ölfilter ern; Regelwartungsdienst; Reparatur Sonstiges; Wartung Sonstiges; Wartung Sonstiges; Zündkerzen ern |
| 07.01.2025 | 20.699 | Motoröl b. Wartung; Ölfilter ern; Regelwartungsdienst; Wartung Sonstiges; Wartung Sonstiges |