

## Expertise

Protocol number: 45485249  
Order No. / Reference: 26301335  
Inspection date: 15 May 2026

Manufacturer: Volkswagen

Model: Passat Variant 1.4 TSI Plug-In-Hybrid DSG GTE

VIN: WVVZZZ3CZPE026441



### Vehicle details

#### Manufacturer / Type / Model / Equipment

Volkswagen Passat Variant 1.4 TSI Plug-In-Hybrid DSG GTE

**Vehicle Identification number** WVVZZZ3CZPE026441

**Mileage (Read)** 83,932 km

**First registration** 9 Dec 2022

**Number of holders** 1

**Next periodical technical inspection** 12/2027

(Report not on hand)

**Power / Engine displacement** 115 kw / 1,395 ccm

**Fuel type / Cylinder** Hybr.B/E ext.aufll / 4

**Gearbox / Number of gears** Automatic / 6

**Type of drive** Front drive

**Type of vehicle** Station wagon

**Colour / colour code** Mangangrau-metallic (B7R)

**Doors / Seats** 5 / 5

**Upholstery type** Alcantara / Leather

**Colour of upholstery** Grey-Beige

**Re-import** no

**readiness to drive** Roadworthy



Vehicle details			
<b>Maintenance booklet / proof</b>	digital proof / complete	<b>Next maintenance in</b>	67 Tag(e)
<b>Last service on / at</b>	12/2025 at 82,504 km		
<b>Key is / should be</b>	1 / 2	<b>FZG documents</b>	ZB#2 (B) was available (copy), ZB#1 (S) was not available.
		<b>Letter No.</b>	GP853469
<b>Previous damage / Accident</b>	Detectable	<b>Repainting</b>	Detectable
<b>Inspection conditions</b>	sufficient	<b>Lifting equipment / pit</b>	No
<b>Test drive</b>	Not performed	<b>Engine function test</b>	Performed
<b>readiness to drive</b>	Roadworthy		
<b>Manufacturer key number/ type code number</b>	0603 / BRZ 00128		
<b>Emission standard</b>	EURO6;WLTP;AP;PI/CI; M, N1 I	<b>fine dust sticker</b>	
<b>Permitted total weight</b>	2,270 kg	<b>Empty weight</b>	

## Tyres

Mounted tyres				
#	Tyre size	Type of tyre	Manufacturer	Tread depth
1)	235/45 R18 94W	Summer tyres on Light alloy	Continental	5mm / 5mm
2)	235/45 R18 94W	Summer tyres on Light alloy	Continental	3mm / 3mm
Additional tyres				
#	Tyre size	Type of tyre	Manufacturer	Tread depth
1)	215/55 R17 94H	Winter tyres on Light alloy	Continental	7mm / 7mm
2)	215/55 R17 94H	Winter tyres on Light alloy	Continental	8mm / 8mm

**Legend: Tread depth information for the left tire is listed first, for the right tire it is listed second on the axle in the direction of travel.**

TÜV SÜD Auto Partner GmbH  
Wiesenring 2  
04159 Leipzig

Inspection location  
Hartmann Fleet Professionals GmbH  
Leerenstraße 25  
29683 Bad Fallingbommel



## Equipment



## Standard equipment

- Airbag for driver and front passenger (airbag deactivation switch on the passenger side)
- Anti-lock braking system (ABS)
- Adaptive Cruise Control (ACC) "stop & go", including speed limiter
- Electrically adjustable and heated exterior mirrors, ambient lighting (automatically dimming on the driver's side)
- Chrome trim on the side windows
- Tachometer
- Parking aid - warning signals for obstacles in the front and rear area
- Electronic parking brake including auto-hold function
- Remote release for luggage compartment lid
- Windscreen made of laminated safety glass, heat and sound insulating
- Adjustable luggage compartment floor
- Rear window heated
- rear window wiper
- Interior mirror automatically dimming
- ISOFIX mounting points (for attaching 2 child seats to the rear seats, also for i-Size child seats)
- Rear headrests (3)
- LED taillights
- Steering wheel: Multifunction sports steering wheel in leather, with paddle shifters (gearshift knob in leather)
- Multifunction display "Premium" with multi-color display (showing, among other things: - Outside temperature - Average consumption - Average speed - Trip distance - Trip time - Gear recommendation - Speed warning - Comfort - Current consumption - Range - Service - Time with extended display options, e.g.: - Digital speedometer - Digital oil temperature display - Lights & visibility - Language - Auxiliary heater - Winter tires)
- Emergency braking assistant "Front Assist" (for automatic distance control ACC up to 210 km/h)
- Package: Light and Sight Package "Plus" (LED lights in the front footwell - Electrically adjustable and heated exterior mirrors, automatically dimming on the driver's side - Entry/warning lights in the front doors, in LED technology - Automatic headlight control, with daytime running lights, "Leaving Home" function and manual "Coming Home" function - Interior light with delayed shut-off and dimming function, 2 LED reading lights each in the front and rear - Automatically dimming interior mirror - Illuminated vanity mirrors - Extendable sun visors - Rain sensor)
- Keyless start system without safe locking
- Seat belts: Three-point automatic seat belt (seat belt for middle rear seat - seat belts for outer rear seats - front seat belts with height adjustment and belt tensioner)
- Seats: Front seats height-adjustable (ergoComfort seat on the driver's side - with electric backrest adjustment)
- Start-stop system (with brake energy recuperation)
- Bumpers in body color
- Telephone interface
- Airbag, head airbag system for front and rear passengers (including front side airbags)
- App-Connect Wireless (Volkswagen offers three interfaces for connecting smartphones with numerous possibilities: - Apple CarPlay - Android Auto from Google - MirrorLink)
- Cup holders (2) front
- Hill start assist
- third brake light
- Headliner in Mistral Grey
- e-Sound (artificially generated engine noise to inform other road users about the approach of the e-vehicle)
- Entry/warning lights in LED technology in the front doors
- Automatic headlight control (with daytime running lights, "Leaving home" function and manual "Coming home" function)
- Pedestrian detection
- Transmission: 6-speed DSG (6-speed dual-clutch transmission DSG)
- Interior lights with delayed shut-off and dimming function (2 LED reading lights each at the front and rear)
- Cable for AC charging station (incl. standard mains charging cable for household socket)
- Front headrests (safety-optimized, longitudinally and height-adjustable)
- Headlight range control
- Front center armrest, height and length adjustable, with storage box (2 rear air vents with chrome slats)
- Fatigue detection (detects signs of possible driver fatigue based on characteristic steering behavior, time of day and driving duration and issues a visual and audible warning)
- Mains charging cable for household socket
- Mesh partition
- Non-smoking version (storage compartment and 12V socket at the front)
- Emergency call service (no registration required, service is activated upon delivery)
- Radio accessories: Digital radio reception DAB+ (reception of digitally broadcast radio stations and traffic information in addition to the analog station offering - reception depends on the local availability of digital networks - expanded range of radio programs - improved reception performance)
- Tire pressure monitoring system (passive)
- Rear bench seat undivided, backrest asymmetrically split and foldable, with center armrest (and pass-through option)
- Power steering (electromechanical, speed-dependent)
- Seats: Comfort seats in the front
- Seats: Lumbar support in the front (driver's side electrically adjustable)
- Lane Assist (warns with a corrective steering intervention if the vehicle unintentionally leaves the lane)
- 12V power outlet on the rear center console (and in the luggage compartment)



- First aid kit, warning triangle and high-visibility vest
- Electronic immobilizer
- Central locking with remote control

### Extra equipment

- Anti-theft alarm system (interior monitoring, backup horn and tow-away protection - illuminated make-up mirror in the sun visors, extendable sun visors)
- Auxiliary heating and ventilation (with radio remote control and timer)
- Navigation system "Discover Pro" incl. "Streaming & Internet" (4x20 Watt App-Con. Wireless Digital Cockpit. Operation with proximity sensor. Dual tuner with phase differentiation. DAB. Vehicle menu. Speed. Volume adjustment. Gestures. 32 GB SSD hard drive. Map 2D display. Tone control. 3-way TFT display with touchscreen. MP3. Navigation for Europe. Voice control. Telephone contact. Address. Telephone interface. "Comfort" with inductive charging. 2 USB iPod/iPhone. Traffic sign recognition. "We Connect Plus" incl. "We Connect". Dynamic route guidance. RDS. TMC tuner. Mobile key pre-activation, vehicle via smartphone.)
- Package: "Design and Comfort" in conjunction with "Business Premium" (silver anodized roof rails - stainless steel door sill trims front and rear - automatically heated windshield washer nozzles in the front - "ArtVelours" seat center panels of the front seats and outer rear seats, - inner side bolsters in "Vienna" leather - sport comfort seats in the front - heated front seats)
- Package: Ambient lighting "Plus" (multicoloured ambient lighting - LED entry/warning lights in all doors - interior lights with switch-off delay and dimming function, 2 LED reading lights each in the front and rear)
- Panoramic tilt/slide sunroof (with panoramic roof at the rear)
- Proactive occupant protection system and lane change assistant "Side Assist" (Proactive occupant protection system in conjunction with "Front Assist" and "Side Assist" - lane change assistant "Side Assist" and parking assistant)
- Rear side windows and rear window tinted
- Surround view "Area View" including reversing camera "Rear View" (displays the vehicle's surroundings in real time on the radio/navigation system display - assists when exiting blind driveways or side streets, when parking in and out of parking spaces, when maneuvering with a trailer or when driving off-road)
- Trailer maneuvering assistant "Trailer Assist" including parking assist "Park Assist" and parking aid
- Voice control
- Wheels: Tire Mobility Set omitted

- Textile floor mats (front and rear)
- Warning tone and light for unfastened seat belts front and rear
- Head-up display
- IQ.LIGHT - LED matrix headlights (GTE) (Dynamic Light Assist high beam control for LED matrix headlights - LED taillights with dynamic turn signals - LED headlights with LED daytime running lights, cornering lights and dynamic turn signals - Dynamic headlight range control with dynamic cornering lights - Rear fog lights on both sides, reversing lights on both sides)
- Keyless locking and starting system "Keyless Access" with safe locking (automatic locking and starting system where the vehicle key must be carried but not handled - if you carry the vehicle key and approach the vehicle, it is automatically unlocked; the engine is conveniently started via a start button)
- Luggage net
- Package: "Business Premium" package incl. navigation (from Business trim level) (2 USB-C ports in the front, USB-C charging socket in the rear, 230V socket, App-Connect incl. wireless, Apple CarPlay, Android Auto, "Travel Assist" driver assistance system and "Lane Assist" lane keeping assist system, Air Care Climatronic with 3-zone temperature control, active combination filter and rear controls, lumbar support in the front, electric on the driver's side, massage function on the driver's side, "Rear View" reversing camera, heated windshield washer nozzles, Comfort telephone interface, inductive charging function, heated front seats)
- Package: "Easy Open & Close" package including safe locking (extendable and removable luggage compartment cover with electric opening - tailgate with sensor-controlled opening and closing, with remote unlocking - keyless locking and starting system "Keyless Access" with safe locking)
- Package: IQ.DRIVE incl. IQ.LIGHT. in conjunction with BP
- Package: Winter additionally includes heated outer rear seats (windscreen washer nozzles automatically heated - front seats/rear seats heated)
- Paint finish: Metallic
- Roof rails, silver anodized
- Towbar, foldable (with electric release)
- Wheels: 4 alloy wheels 8 J x 18 "Monterey", Volkswagen R (in grey metallic - AirStop tires 235/45 R 18, optimized for rolling resistance - wheel locks with enhanced theft protection - rear disc brakes, brake calipers in blue (only for GTE))



### Brief expert findings

Documents submitted	At the time of the inspection, the vehicle registration certificate Part 2 (title) was available, but the vehicle registration certificate Part 1 (document) was not. (Copy)
VIN comparison	The vehicle identification number (VIN) was read from the vehicle and its conformity with the submitted documents was confirmed by the undersigned during the inspection.
Inspection	The inspection conditions were sufficient for the assessment of the vehicle. No lifting equipment or pit was available for inspecting the vehicle. Therefore, inspection of the vehicle's underside was only possible to a limited extent.
Test drive	No test drive/shunting maneuver was carried out during the inspection of the vehicle.
Engine function test	An engine test run was performed.
readiness to drive	The vehicle was roadworthy at the time of inspection.

### Value reducing factors

No.	Component group	Description
1	Wheel / tyres	Alloy rim - front left side - Scratch(es) - Loss in value
2	Instrument panel	Air nozzle - centre (Versteller fehlt) - Differs from the original configuration - Replace
3	Wheel / tyres	Alloy rim - rear right side - Scratch(es) - Loss in value
4	Boot lid / rear door	Boot lid - Scratch(es) - Smart repair
5	Wheel / tyres	Alloy rim - front right side - Scratch(es) - Replace
6	Rear bumper	Rear bumper - Scratch(es) - Paint

### Wear and tear

No.	Component group	Description
1	Front bumper	Front bumper (Unterseite) - Scratch(es) - No deduction
2	Bonnet	Bonnet - dent(s) - No deduction

The vehicle shows signs of wear and tear commensurate with its age and use.

### Missing parts

#### Description

Equipment - Vehicle key

### Previous damages

No.	Previous damage	Extent of damage (Net)
1	Front, Side - left, Side right, Provided by user / customer, from 20 Jul 2024	6.086,01 €

### Repainting

#### No. Repainting

1 Bonnet, Professionally carried out, Invoice of repair done Non-existent

### Paint coat thickness measurement

Bonnet 288 µm |



## Order/Scope of Order

An order was placed to prepare a sales report for the described vehicle. This report includes the following:

- Description of key vehicle information
- Documentation of equipment features  
*(Delivery by third-party service providers)*
- Documentation of damage, defects, missing parts
- Documentation of prior damage, unrepaired prior damage, repainting
- A brief visual or functional inspection of the equipment details, if possible.  
*(Functional testing of driver assistance systems is not included in the scope of services!)*
- a photographic documentation of the vehicle

## Basis for the order

This product is based on the guidelines for vehicle returns and valuations published by Alphabet Fleet GmbH. The expert makes the specific findings in each individual case objectively, within the framework of the prescribed standards, based on their own expertise.

The vehicle inspection takes place in a fully assembled, unassembled state.

Damage or defects that can only be detected during disassembly/diagnostic work or through further investigation remain within the realm of prognostic risk. An increased risk exists due to concealed defects caused by fraudulent misrepresentation and which were not identifiable by the expert.

Damage or defects resulting from normal use or wear and tear of the vehicle will be accepted in accordance with the applicable standard.

There was no explicit identification or monetary consideration of the expected features within the product.

Features which, in their nature and extent, slightly exceed normal use but do not constitute unacceptable damage, will be documented and indicated as signs of wear, if applicable.

Damage or defects that, according to the applicable standard, can no longer be attributed to normal use or wear and tear are listed under "Value Reducing Factors" in the product description.

Depending on the product specification, a monetary ID can be provided. If this takes place, the costs can be 100% or pro rata depending on the vehicle's age and mileage.

## Previous damages

According to available information previous damages were repaired at the vehicle. Traces of repairs, which allow conclusions about the area of repair, were not recognizable during the inspection.

## Comments

- Winterradsatz ist kein Bestandteil des Auslieferungsumfangs.



Figure 1: Diagonal front (left)



Figure 2: Diagonal front (right)



Figure 3: Diagonal rear (left)



Figure 4: Diagonal rear (right)



Figure 5: Interior - front



Figure 6: Interior - rear



Figure 7: Instrument cluster



Figure 8: Instrument panel



Figure 9: Interior 360° view



Figure 10: Cargo area

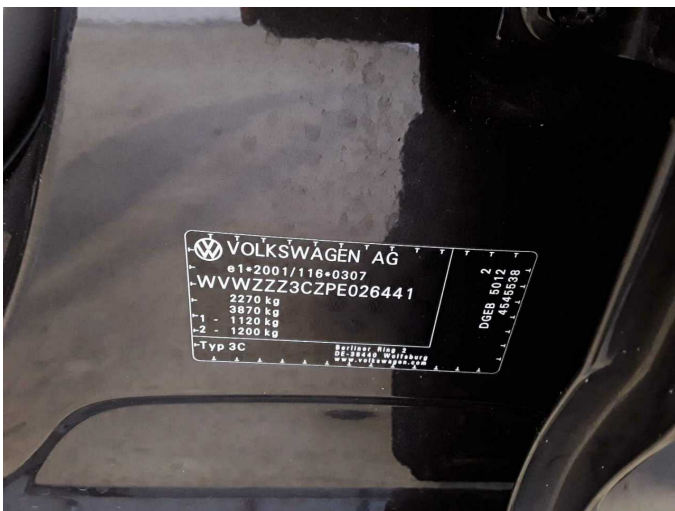


Figure 11: VIN



Figure 12: Mounted tyres

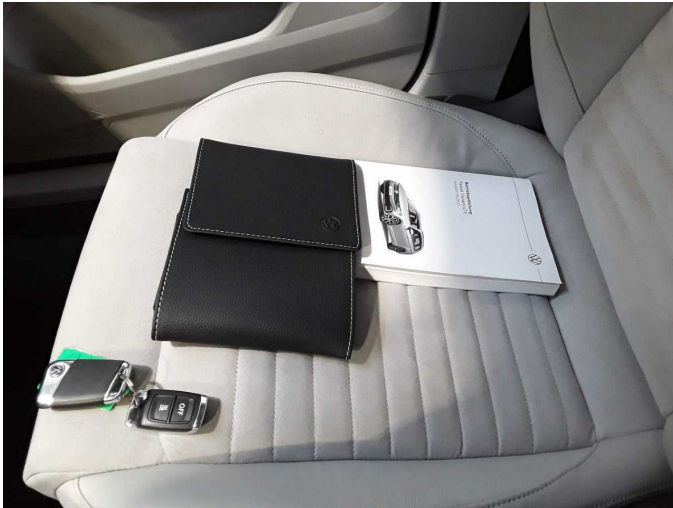


Figure 13: Documents

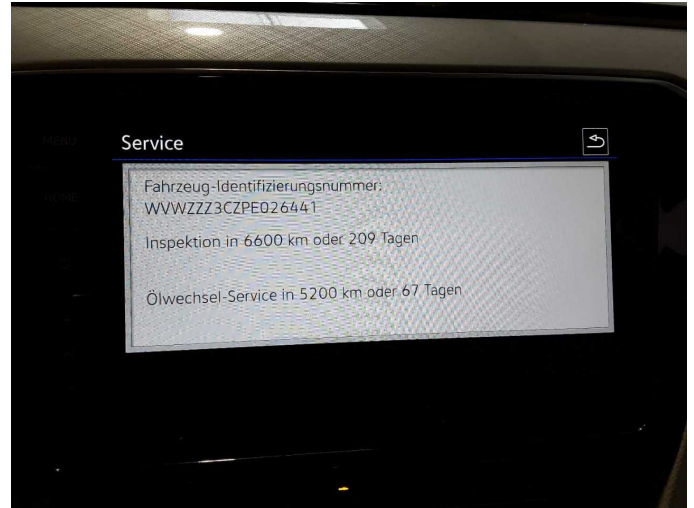


Figure 14: Documents



Figure 15: Documents



Figure 16: Additional tyres

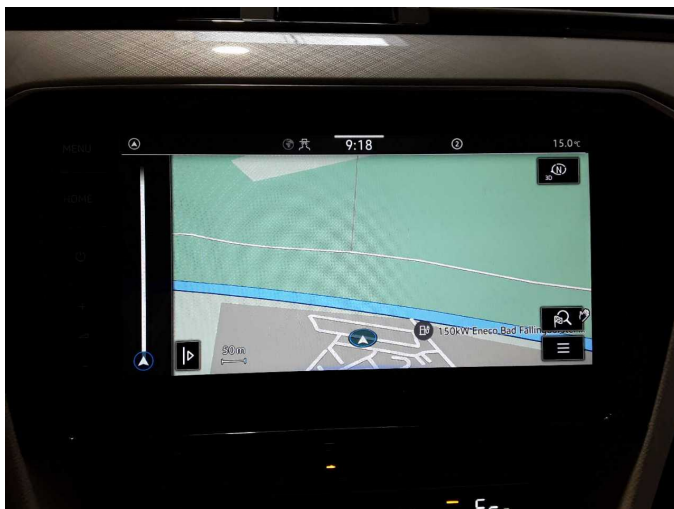


Figure 17: Navigation



Figure 18: Misc.



Figure 19: Misc.



Figure 20: Misc.



Figure 21: Misc.



Figure 22: Misc.



Figure 23: Misc.



Figure 24: Misc.



Figure 25: Misc.



Figure 26: Misc.

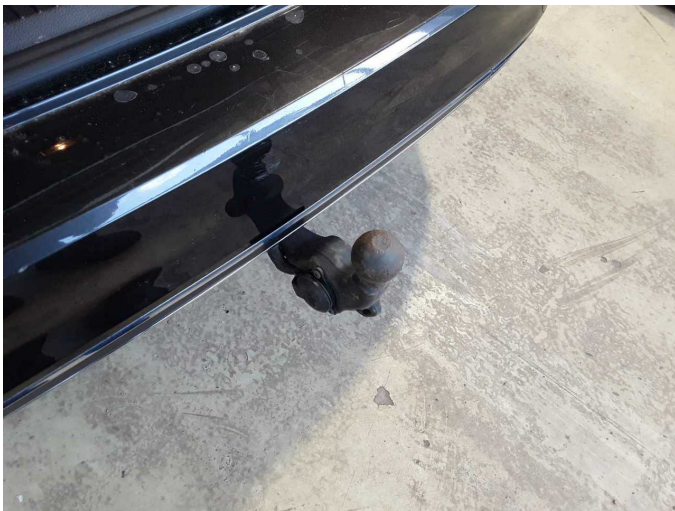


Figure 27: Misc.



Figure 28: Misc.



Damage 1: Wheel / tyres: Alloy rim - front left side - Scratch(es) - Loss in value



Damage 1: Wheel / tyres: Alloy rim - front left side - Scratch(es) - Loss in value



**Damage 2:** Instrument panel: Air nozzle - centre (Versteller fehlt) - Differs from the original configuration - Replace



**Damage 2:** Instrument panel: Air nozzle - centre (Versteller fehlt) - Differs from the original configuration - Replace



**Damage 3:** Wheel / tyres: Alloy rim - rear right side - Scratch(es) - Loss in value



**Damage 3:** Wheel / tyres: Alloy rim - rear right side - Scratch(es) - Loss in value



**Damage 4:** Boot lid / rear door: Boot lid - Scratch(es) - Smart repair



**Damage 4:** Boot lid / rear door: Boot lid - Scratch(es) - Smart repair



**Damage 5:** Wheel / tyres: Alloy rim - front right side - Scratch(es) - Replace



**Damage 5:** Wheel / tyres: Alloy rim - front right side - Scratch(es) - Replace



**Damage 5:** Wheel / tyres: Alloy rim - front right side - Scratch(es) - Replace



**Damage 6:** Rear bumper: Rear bumper - Scratch(es) - Paint



**Damage 6:** Rear bumper: Rear bumper - Scratch(es) - Paint



**Repainting 1:** Bonnet



**Repainting 1: Bonnet**



# Wartungshistorie

(gemäß Auftraggeber Informationen)

Fahrgestellnummer: WVWZZZ3CZPE026441  
Hersteller / Modell: VOLKSWAGEN VOLKSWAGEN Passat Variant 1.4 TSI Plug-In-Hybrid DSG GTE

Datum	KM-Stand	Beschreibung
09.03.2026	83.580	Bremse Sonstiges; Bremsklötze hinten; Bremsscheiben + Klötze h; Bremsscheiben hinten
05.12.2025	82.504	AU; Wartung Sonstiges
21.07.2025	74.056	Motoröl b. Wartung; Ölfilter ern; Ölwechsel; Wartung Sonstiges
30.12.2024	60.478	Bremsflüssigkeit; Bremsflüssigkeit ern; Getriebeöl ern/prüfen; Motoröl b. Wartung; Ölfilter ern; Regelwartungsdienst; Wartung Sonstiges; Zündkerzen ern
03.06.2024	44.259	Motoröl b. Wartung; Ölfilter ern; Ölwechsel; Wartung Sonstiges
29.11.2023	29.693	Motoröl b. Wartung; Ölfilter ern; Regelwartungsdienst; Wartung Sonstiges
10.05.2023	13.574	Motoröl b. Wartung; Ölfilter ern; Ölwechsel; Wartung Sonstiges