



Assessment

- Vehicle Inspection Report -

Number: 10438973
From: 16.04.2026

» Overview

Order number: 1002412041
Order completed: 16.04.2026 13:28
Report number: 10438973
VIN: WVGZZZCSZPY045701



Front Left 3/4



Rear Right 3/4



Mileage



Assessment

- Vehicle Inspection Report -

Number: 10438973
From: 16.04.2026

» Vehicle Data

Vehicle category:	Passenger Car
Vehicle type:	SUV
Make:	Volkswagen
Model:	Taigo
Manufacturers and type code:	0603 / CQN
Date of first registration:	05.04.2023
Mileage:	36,159 km
Proof of mileage:	ReadOff
Exterior colour:	Ivory Silver Metallic
Roof colour:	Ivory Silver Metallic
Propulsion:	Front
Fuel:	Petrol
Engine size (cc):	1,500 ccm
Performance:	110 kW (150 PS)
Length:	
Height:	
Width:	
Permitted total weight:	
Wheelbase:	
Number of powered axles:	2
Cylinders:	4
Euronorm:	Euro 6
Number of doors:	4
Number of seats:	5
Gearbox:	Automatic 7-speed
Upholstery type:	Lining fabrics
Interior colour:	Grau-Titanschwarz-Silbergrau/ Titanschwarz/Schwarz/Perlgrau
Number of keys:	2

» Documents & Maintenance

Statutory inspection date:	04.2026
Registration certificate available:	No
Registration certificate received:	No
License plate:	None
Maintenance book:	Digital
Maintenance:	Not testable
Maintenance last date:	
Maintenance last mileage:	
Remainder until next maintenance:	27,000 KM



Assessment

- Vehicle Inspection Report -

Number: 10438973
From: 16.04.2026

"Plus" package for special models	Disc brakes in front
"Standard Plus" version	Disc brakes in rear
2 reading lights in front	Diversity antenna for FM reception
2 USB-C ports in the front, 2 USB-C charging sockets on the center console in rear, charging capacity up to 45 W	Door and side trim panel
3 head restraints in rear	Driver alert system
3-point seat belt for center rear seat	Driver and front passenger airbag with front passenger airbag deactivation
3-point seat belts for the outer rear seats	Driving Mode Selection
3-point seat belts in front with height adjustment and seat belt pretensioners	Driving on the right
4 alloy wheels "Bangalore" 6.5J x 17	Dual-clutch transmission DSG DQ200
4 doors	Dynamic headlight range control
4-cylinder SI engine 1.5 l TSI, 110 kW	Dynamic Road Sign Display
4-cylinder SI engine 1.5 l unit 05E.D	ECO function
6 speakers	Electronic differential lock XDS
7-speed automatic transmission or dual-clutch transmission DSG, note: PR family EDF	Electronic immobilizer
Activated carbon canister (Evaporative Emission Control System (EVAP))	Electronic Stability Control w/ driver steering recommendation, ABS, ASR, EDL, EDTC and trailer stabilization
Adaptive Cruise Control ACC stop & go incl. speed limiter	Elimination of nameplate for engine designation on luggage compartment lid
Advanced high-beam control Dynamic Light Assist for LED matrix headlamps	Emergency call service; no registration required, service is activated upon delivery
Air Care Climatronic 2 zone automatic climate control with enhanced air filter with activated carbon	Emission standard EU6 AP
Alternator 140 A	Equipment options subset for Germany
Ambient lighting	Executive comfort equipment
App-Connect incl. App-Connect Wireless for Apple CarPlay and Android Auto	Exhaust tailpipe, double-flow
Auto-dimming interior rearview mirror	Exterior mirrors, power-adjustable, folding and heated, w/ front passenger exterior mirror lowering function
Automatic headlight control with LED separate daytime running light and exit and entry lighting	Exterior mirrors: aspherical on driver side, convex on front passenger side
Autonomous Emergency Braking Front Assist (for Adaptive Cruise Control ACC up to 210 km/h)	First aid kit, warning triangle and safety vest
Battery 380 A (59 Ah) EFB+	Foamed dashboard
Black exterior mirror housings	Fresh air intake system with combination filter
Black headliner	Front center armrest, longitudinally adjustable, with storage compartment
Black roof rails	Front fog lamps and cornering light
Body-colored bumpers, air intake and radiator grille with chrome trims	Front seats with height adjustment
Carpet mats in front and rear	Front stabilizer bar
Carrier frequency 433.92 MHz-434.42 MHz	Front-wheel drive
Central locking system without SAFELOCK, with radio remote control and 2 remote control folding keys	Fuel system for fuel-injected SI engine (tropicalized)
Chrome bezel for instrument cluster, vents, door handles, and gear shift	Gearshift knob in leather
Curtain airbags in front and rear, side airbags in front, center airbag	Hand brake lever handle in leather
Decorative inserts for special model	Hatchback
Decorative trims	Heated front seats
Digital radio reception DAB+	Height and longitudinally adjustable steering column
	Hill start assist
	Illuminated molding between headlamps



Assessment

Number: 10438973
From: 16.04.2026

- Vehicle Inspection Report -

Illuminated vanity mirrors in sun visors	Rear shock absorption
Initial standard fuel filling	Rear window wiper with intermittent control
Introductory volume	Refrigerant R1234yf
IQ.DRIVE assistance systems package	Regional code " ECE " for radio
IQ.LIGHT - LED matrix headlamps with LED separate daytime running light	Removable and lockable trailer hitch
ISOFIX anchors for child seats on outer rear bench seats and on front passenger seat, compatible for i-Size	Safety-optimized front head restraints
Laminated safety glass windshield, heat-insulating	Scuff plates for special model
Leather-wrapped multi-function steering wheel with shifting paddles	Seat trim covers for special model
LED rear combination lamps	Semi-automated driving assistance TravelAssist and lane keeping system Lane Assist
Left-hand drive	Service indicator 30 000 km or 2 years (variable)
Light unit in front footwell	Shock absorption in front
LongLife Service Regime	Single-tone horn
Luggage compartment floor adjustable in 2 heights	Smoker's package
Luggage compartment lighting	Special identification label for EC for M1 passenger vehicles
Manual in German (Germany)	Standard battery/alternator capacity
Mobile phone interface with inductive charging feature	Standard climatic zones
MOVE	Standard rear axle
MOVE	Standard seats in front
Multi-color Digital Cockpit "Pro" selection of different info profiles possible	Start-stop system with regenerative braking
Multifunction camera	Storage compartment under front seat(s)
Navigation system "Discover Media" incl. Streaming & Internet	Surround lighting with welcome light
Navigation system "Discover Media" incl. Streaming & Internet	Suspension range 40 installation control only, no requirement forecast
No special purpose vehicle, standard equipment	Tire Mobility Set: 12-volt compressor and tire sealant
Non-folding front passenger seat backrest	Tire Pressure Monitoring System
Not hot country	Tires 205/55 R17 low rolling resistance
Online service, with OCU, with head unit coding, without engine immobilizer interconnection	Tires without specification of tire brand
Operating permit, alteration	Transport protection film (minimum protection) with additional transport protection measures
Pamplona manufacturing sequence	Trims for alloy wheels
Park Distance Control - warning signals for obstacles in the front and rear	Type approval country Germany
Part set without country-specific prescriptive standard	Unsplit rear bench seat, asymmetric split folding backrest
Pedals in brushed stainless steel	Vehicle class differentiation -2F0-
Pedestrian and cyclist monitoring	Vehicles without special upgrade measures
Power steering	Warning lamp for washer fluid level
Power windows	Warning signal and warning light for front and rear seat belts not fastened
Preparation for We Connect and We Connect Plus	Weight range 14 installation control only, no requirement forecast
Privacy glass for rear side windows and rear window	Wheel locks with extended theft protection
Radio	Wheelbase
Rain sensor	Without additional tires
Rear floor panel module, type 3	Without alternative drive system
Rear fog light on one side, back-up light on both sides	Without auxiliary heater/parking heater
Rear overhang, medium	Without camera systems/accident sensors



Assessment

- Vehicle Inspection Report -

Number: 10438973
From: 16.04.2026

- Without extended safety system
- Without headlamp washer system
- Without heated washer nozzles
- Without lane change assist
- Without lumbar support in seat backrests
- Without roof insert (standard roof)
- Without second battery
- Without tool kit and jack
- Without voice control



Assessment

- Vehicle Inspection Report -

Number: 10438973
From: 16.04.2026

» Tyres

MOUNTED TYRES

Make	Location	Position	Type	Rim	Dimensions	Profile depth
Semperit	Front	Left	Winter	Steel	195/60 R 16 89 H	6.0 mm
Semperit	Front	Right	Winter	Steel	195/60 R 16 89 H	6.0 mm
Semperit	Rear	Left	Winter	Steel	195/60 R 16 89 H	7.0 mm
Semperit	Rear	Right	Winter	Steel	195/60 R 16 89 H	7.0 mm

Permitted: Yes**Roadworthy:** Yes

UNMOUNTED TYRES

Make	Location	Position	Type	Rim	Dimensions	Profile depth
Goodyear			Summer	Aluminium	205/55 R 17 91 V	5.0 mm
Goodyear			Summer	Aluminium	205/55 R 17 91 V	5.0 mm
Goodyear			Summer	Aluminium	205/55 R 17 91 V	5.0 mm
Goodyear			Summer	Aluminium	205/55 R 17 91 V	5.0 mm

Permitted: Yes**Roadworthy:** Yes

SPARE/EMERGENCY TYRE & ACCESSORIES

Toolkit present: Yes**Repair kit present:** Yes**Repair kit expiration date:** 10.2026**Compressor present:** Yes



Assessment

- Vehicle Inspection Report -

Number: 10438973
From: 16.04.2026

» Devaluation Factors

Nr	Location	Damage type	Repair type
1	MOT certificate	Expired	Renew
2	Bumper FM	Scratch(es)	Smart repair

» Usage Damages

Nr	Location	Damage type	Repair type
1	Windscreen	Stone chip(s)	Acceptable
2	Bumper trim R	Scratch(es)	Acceptable



Assessment

- Vehicle Inspection Report -

Number: 10438973
From: 16.04.2026

» Commercial devaluation

Known previous damages:	No
Previous damages detectable:	No
Repainting present:	No
Paint thickness measurement performed:	Yes - no abnormalities/deviations

PAINTTHICKNESS MEASUREMENT RESULTS

The measured values were in the usual range.

At least 3 measurements were carried out per component.



Assessment

Number: 10438973
From: 16.04.2026

- Vehicle Inspection Report -

» Notes On The Assessment

Details of the assignment and the scope of the assessment:

The order was placed to prepare a condition report on the described vehicle.

The vehicle condition assessment was carried out in accordance with the order on the basis of the standards for vehicle assessments specified by the client. The expert makes the findings in the individual case on the basis of his own expertise and at his own expert discretion.

Vehicle identification:

WVGZZZCSZPY045701

VIN check, no comparison with documents possible

Vehicle condition:

Dirty

Inspection condition:

Sufficient

Lifting platform/lifting equipment used:

Yes

Testdrive carried out:

Yes

Engine test carried out:

Yes



Assessment

- Vehicle Inspection Report -

Number: 10438973
From: 16.04.2026

» Remarks

This copy was generated electronically. It is valid without an original signature.



Assessment

- Vehicle Inspection Report -

Number: 10438973
From: 16.04.2026

» Commercial Pictures



Front Left 3/4



Front Right 3/4



Rear Left 3/4



Rear Right 3/4



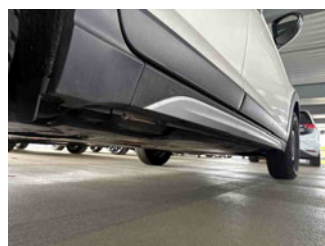
Mileage



Tools



Sill outer L



Sill outer R



Chassis nr



Wheel FL



Wheel FR



Wheel RL



Wheel RR



Additional wheel 1



Additional wheel 2



Additional wheel 3



Additional wheel 4



Central console



Engine compartment



Documents



Assessment

- Vehicle Inspection Report -

Number: 10438973
From: 16.04.2026



Interior arrangement



Towbar



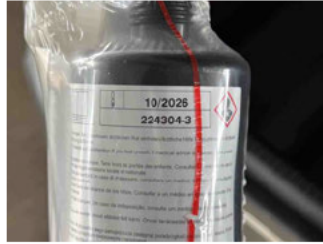
History Maintenance



Interior - front



Interior - rear



Tirefit expiration date



GPS/Radio



Assessment

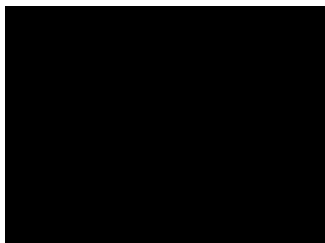
- Vehicle Inspection Report -

Number: 10438973
From: 16.04.2026

» Devaluation Damages

DEVALUATION FACTORS

1 - MOT certificate - Expired - Renew

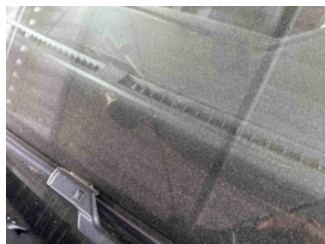


2 - Bumper FM - Scratch(es) - Smart repair



USAGE DAMAGES

1 - Windscreen - Stone chip(s) - Acceptable



2 - Bumper trim R - Scratch(es) - Acceptable

