

Expertise

Protocol number: 46008837
Order No. / Reference: 26154584
Inspection date: 17 Jun 2026

Manufacturer: Mercedes-Benz

Model: Vito 116 CDI Tourer Extralang Aut. PRO

VIN: W1VVLGFZ5T4543944



Vehicle details

Manufacturer / Type / Model / Equipment

Mercedes-Benz Vito 116 CDI Tourer Extralang Aut. PRO

Vehicle Identification number W1VVLGFZ5T4543944

Mileage (Read) 24,927 km

First registration 11 Jul 2025

Number of holders 1

Power / Engine displacement 120 kw / 1,950 ccm

Fuel type / Cylinder Diesel / 4

Gearbox / Number of gears Automatic / 9

Type of drive Rear drive

Type of vehicle Van

Colour / colour code Obsidian black metallic

Doors / Seats 4 / 9

Upholstery type Cloth

Colour of upholstery Black

Type of use rental car

readiness to drive Roadworthy



Vehicle details

Maintenance booklet / proof	digital proof / complete	Next maintenance in	371 Tag(e)
Key is / should be	2 / 2	FZG documents	ZB#2 (B) was available (copy), ZB#1 (S) was not available.
		Letter No.	HN425645
Previous damage / Accident	None detectable	Repainting	None detectable
Inspection conditions	sufficient	Lifting equipment / pit	yes
Test drive	Not performed	Engine function test	Performed
readiness to drive	Roadworthy		
Manufacturer key number/ type code number	2222 / ABB 07004		
Emission standard	EURO6;WLTP;EB;PI/CI;M, N1, N2	fine dust sticker	
Permitted total weight	3,100 kg	Empty weight	

Tyres

Mounted tyres

#	Tyre size	Type of tyre	Manufacturer	Tread depth
1)	225/55 R17 109H	All-season tyres on Steel rim with wheel cover	Goodyear	6mm / 6mm
2)	225/55 R17 109H	All-season tyres on Steel rim with wheel cover	Goodyear	6mm / 6mm

Legend: Tread depth information for the left tire is listed first, for the right tire it is listed second on the axle in the direction of travel.

TÜV SÜD Auto Partner GmbH
Wiesenring 2
04159 Leipzig

Inspection location
ARS Altmann AG Automobillogistik
Lilienthalstraße 2
29693 Hodenhagen



Equipment



Standard equipment

- ABS, ESP, ASR, EBV, BAS (Anti-lock Braking System (ABS) - Electronic Stability Program (ESP) - Traction Control (ASR) - Electronic Brakeforce Distribution (EBV) - Brake Assist (BAS))
- Airbag: Thorax-pelvis-sidebag for driver
- Airbag: Windowbag for driver and front passenger
- ATTENTION ASSIST (ATTENTION ASSIST can assist the driver on long, monotonous journeys by monitoring attention. If signs of fatigue or increasing inattention are detected, it suggests a break.)
- Battery: fleece battery 12 V / 92 Ah
- Hill start assist
- third brake light
- COC documents
- Roof cladding
- Electronic tachometer
- Driving light assistant (automatically switching on driving lights)
- Window in rear door/taillgate (with wiper/washer system)
- Front left window fixed in SW/ cargo area sliding door
- Electric window regulator driver/passenger (with anti-pinch protection, quick lowering and raising)
- Generator management (Generator management helps reduce fuel consumption and CO2 emissions. The generator is switched off and the vehicle's electrical system is powered by the battery when it is sufficiently charged. This relieves the engine of the burden of charging the battery, for example, during acceleration. - When braking and during coasting downhill, the generator is switched on and the vehicle's kinetic energy is recuperated to charge the battery.)
- Interior mirror (rearview mirror)
- Intelligent speed assistant
- Child safety locks on doors in the passenger compartment
- Instrument cluster with color display
- Communication module (LTE) for digital services
- Large fuel tank, approx. 70 liters
- leather steering wheel
- Steering wheel: Multifunction steering wheel
- Mercedes-Benz emergency call system
- Navigation: Navigation pre-installation
- Package: BlueEFFICIENCY (Efficiency Package)
- Upholstery: Caluma fabric, black
- Radio: MBUX multimedia system (high-resolution 10.25-inch touchscreen, Bluetooth interface with hands-free function, USB-C port, digital radio (DAB), setup of up to 7 profiles via Mercedes me, voice assistant with seat-specific voice recognition, technical requirements for over-the-air updates, satellite view, social navigation, dynamic offboard routing* (additional route alternatives), online music)
- Wheels: Premium complete wheel protection (3 years)
- Headlights: halogen technology
- Sliding door on the right, cargo/passenger compartment
- electromechanical power steering
- Seats: 3-seater bench, 2nd row
- Screw-in towing eye front/rear
- Passenger side airbag
- Driver's side airbag
- Airbag: Thorax airbag - Pelvis side airbag for front passenger
- Active Lane Keeping Assist
- Increased load capacity to 3,100 kg
- Electrically adjustable and heated exterior mirrors, left and right
- Outdoor temperature display
- Fixing points in the roof frame
- Brake assist, active
- Brake lights, adaptive
- Front cupholder
- Diesel particulate filter and SCR
- Entry grab handle for the cargo area sliding door
- Chassis: Comfort chassis
- Misfueling protection
- Left/right window in SW/ Cargo area sliding door
- Front right window fixed in SW/ cargo area sliding door
- electric parking brake
- Generator 14 V / 200 A
- Speed limit 210 km/h
- Transmission: 9G-TRONIC
- Seatbelt warning device for front passenger seat
- Seatbelt warning device for driver's seat
- Grab handle in the rear
- Lockable glove box
- Boot lid
- HOLD function
- Interior lights in the rear
- Interior trim, high-end finish
- Passive child detection in the vehicle
- Tempmatic controlled air conditioning
- Comfort closing (comfort opening and closing of windows)
- Headrests (2), front
- Plastic floor TPO passenger compartment
- Steering wheel adjustable for tilt and height
- Headlight range control
- Navigation accessories: Live Traffic Information
- Package: Aerodynamics
- Breakdown management
- Radio: Digital Radio DAB
- Radio accessories: 2-way speakers front + rear.
- Full wheel cover
- Tires: 225/55R17
- Tires: Tires without specified make
- Tires: Premium protection tires (3 years)
- Tires: Summer tires
- Tire pressure monitoring (on front and rear axles (wireless))
- Wheels: Steel rims 6.5 J x 17
- Sliding door: Active stop



- Seats: Rear seat mounting with quick-release fasteners, 2 rows of seats
- Seats: Driver's seat cushion depth adjustment
- 12V socket
- Ambient lighting tailgate
- Updates to the intelligent speed assistant
- Pre-installation for Remote Services Plus
- Warning triangle
- Immobiliser
- Central locking with radio remote control
- Car registration

- Crosswind Assist
- Seats: 3-seater bench in the 1st row of the passenger compartment (with individual seat elements - folding outer seat)
- Seats: Passenger seat cushion depth adjustment
- Start-stop function
- Blind Spot Assist
- Ambient lighting in the exterior mirrors
- First aid kit
- Warm air duct to the passenger compartment
- ASSYST maintenance interval indicator
- Heat-insulating glass
- Auxiliary heater, electric

Extra equipment

- Towing capacity 2500 kg
- Tinted rear windows, black glass
- Semi-automatic air conditioning, TEMPOMATIC in the rear
- Navigation
- Package: Winter Package (heated windscreen - heated seats for driver and front passenger - pockets on driver and front passenger seatbacks - heated multifunction steering wheel)
- Seat: Lumbar support driver's seat
- Seats: Comfort driver's seat
- Cruise control

- Towbar (detachable ball head)
- Generator 14 V / 250 A
- Paint finish: Metallic
- Package: Parking package with reversing camera
- Tires: All-season tires
- Electric suction fan, power level 5
- Sliding door on the left (cargo area)
- Key: Multi-button radio remote control
- Seats: Passenger seat, two-seater
- Bumpers painted in body color
- Traffic Sign Assistant

Brief expert findings

Documents submitted	At the time of the inspection, the vehicle registration certificate Part 2 (title) was available, but the vehicle registration certificate Part 1 (document) was not. (Copy)
VIN comparison	The vehicle identification number (VIN) was read from the vehicle and its conformity with the submitted documents was confirmed by the undersigned during the inspection.
Inspection	The inspection conditions were sufficient for the assessment of the vehicle. Lifting equipment and/or a pit were available for examining the vehicle.
Test drive	No test drive/shunting maneuver was carried out during the inspection of the vehicle.
Engine function test	An engine test run was performed.
readiness to drive	The vehicle was roadworthy at the time of inspection.



Value reducing factors

No.	Component group	Description
1	Misc.	Inspection / maintenance - No evidence - No deduction
2	Misc.	Main inspection - No evidence - No deduction
3	Door - front left side	Door - Dent / paintcoat damage - Smooth repair work
4	Side panel - rear left side	Side panel - Scratch(es) - Smart repair
5	Front bumper	Front bumper - Scratch(es) - Smart repair
6	Door - front right side	Door - Dent / paintcoat damage - Smart repair
7	Boot lid / rear door	Boot lid - Scratch(es) - Smart repair
8	Sliding door, right	Sliding door - Dent / paintcoat damage - Smart repair
9	Rear bumper	Rear bumper - Scratch(es) - Paint
10	Bonnet	Bonnet - Scratch(es) - Paint
11	Vehicle glazing	Windscreen (kein Staubschutz) - Stone chips - repair according to calculation

Order/Scope of Order

An order was placed to prepare a sales report for the described vehicle. This report includes the following:

- Description of key vehicle information
- Documentation of equipment features
(*Delivery by third-party service providers*)
- Documentation of damage, defects, missing parts
- Documentation of prior damage, unrepaired prior damage, repainting
- A brief visual or functional inspection of the equipment details, if possible.
(*Functional testing of driver assistance systems is not included in the scope of services!*)
- a photographic documentation of the vehicle

Basis for the order

This product is based on the guidelines for vehicle returns and valuations of light commercial vehicles published by Alphabet Fleet Management GmbH. The expert makes the specific findings in each individual case objectively, within the framework of the prescribed standards, based on their own expertise.

The vehicle inspection takes place in a fully assembled, unassembled state.

Damage or defects that can only be detected during disassembly/diagnostic work or through further investigation remain within the realm of prognostic risk. An increased risk exists due to concealed defects caused by fraudulent misrepresentation and which were not identifiable by the expert.

Damage or defects resulting from normal use or wear and tear of the vehicle will be accepted in accordance with the applicable standard.

There was no explicit identification or monetary consideration of the expected features within the product.

Features which, in their nature and extent, slightly exceed normal use but do not constitute unacceptable damage, will be documented and indicated as signs of wear, if applicable.

Damage or defects that, according to the applicable standard, can no longer be attributed to normal use or wear and tear are listed under "Value Reducing Factors" in the product description.

Depending on the product specification, a monetary ID can be provided. If this takes place, the costs can be 100% d or pro rata depending on the vehicle's age and mileage.

Previous damages

No apparent prior damage that had been repaired could be found on the vehicle.



Figure 1: Diagonal front (left)



Figure 2: Diagonal front (right)



Figure 3: Diagonal rear (left)



Figure 4: Diagonal rear (right)



Figure 5: Interior - front



Figure 6: Interior - rear



Figure 7: Instrument cluster



Figure 8: Instrument panel



Figure 9: Interior 360° view



Figure 10: Cargo area



Figure 11: VIN



Figure 12: Mounted tyres



Figure 13: Documents



Figure 14: Navigation

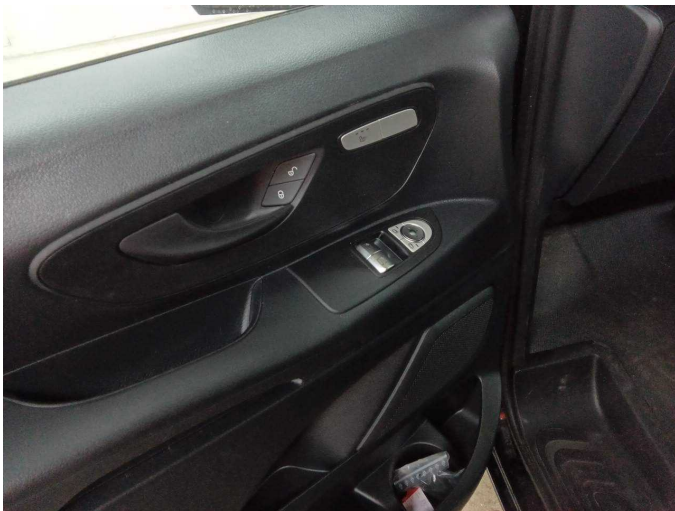


Figure 15: Misc.



Figure 16: Misc.



Figure 17: Misc.



Figure 18: Misc.



Figure 19: Misc.



Figure 20: Misc.



Figure 21: Misc.



Figure 22: Misc.



Figure 23: Misc.



Figure 24: Misc.



Figure 25: Misc.



Figure 26: Misc.



Figure 27: Misc.

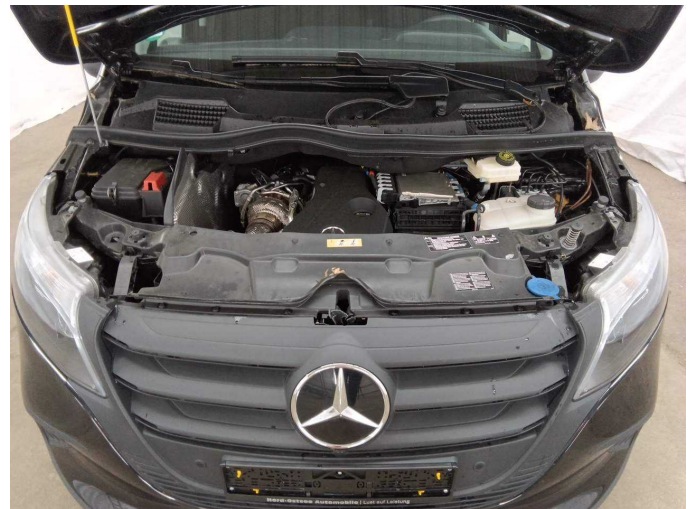


Figure 28: Misc.



Figure 29: Misc.

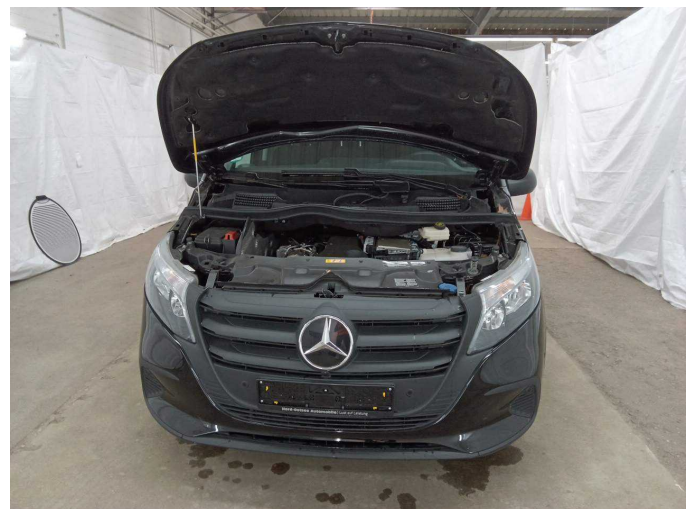


Figure 30: Misc.



Figure 31: Misc.



Figure 32: Misc.



Figure 33: Misc.

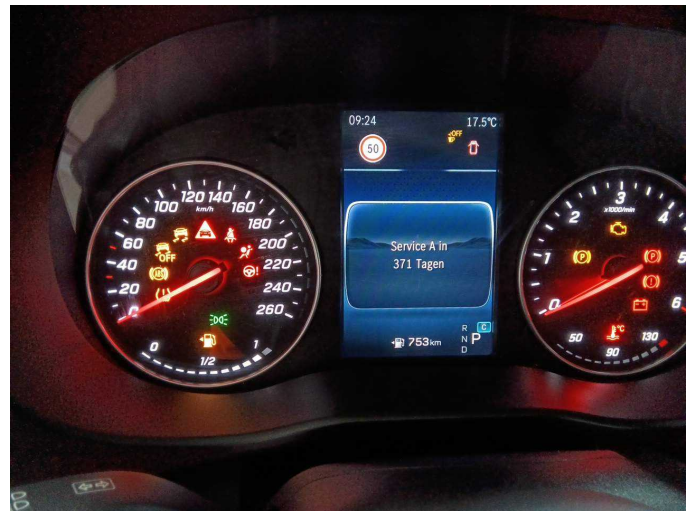


Figure 34: Misc.



Figure 35: Misc.



Figure 36: Misc.



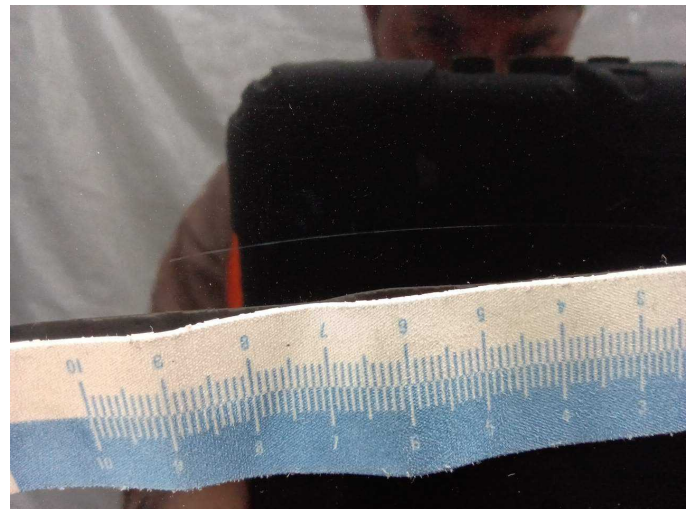
Damage 3: Door - front left side: Door - Dent / paintcoat damage - Smooth repair work



Damage 3: Door - front left side: Door - Dent / paintcoat damage - Smooth repair work



Damage 4: Side panel - rear left side: Side panel - Scratch(es) - Smart repair



Damage 4: Side panel - rear left side: Side panel - Scratch(es) - Smart repair



Damage 5: Front bumper: Front bumper - Scratch(es) - Smart repair



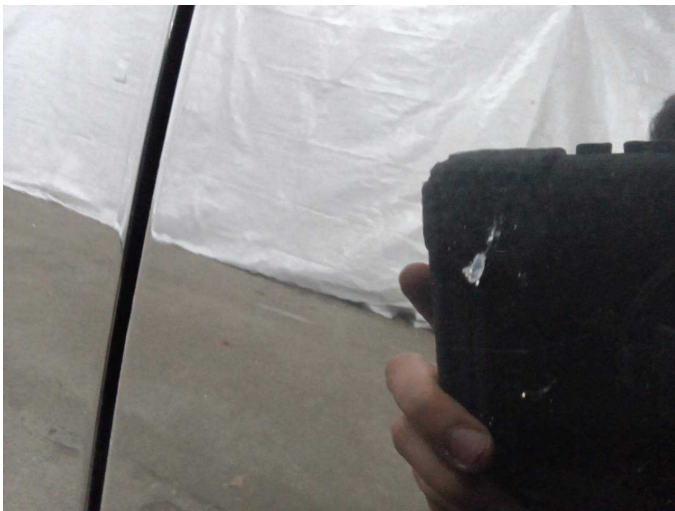
Damage 5: Front bumper: Front bumper - Scratch(es) - Smart repair



Damage 5: Front bumper: Front bumper - Scratch(es) - Smart repair



Damage 6: Door - front right side: Door - Dent / paintcoat damage - Smart repair



Damage 6: Door - front right side: Door - Dent / paintcoat damage - Smart repair



Damage 6: Door - front right side: Door - Dent / paintcoat damage - Smart repair



Damage 7: Boot lid / rear door: Boot lid - Scratch(es) - Smart repair



Damage 7: Boot lid / rear door: Boot lid - Scratch(es) - Smart repair



Damage 7: Boot lid / rear door: Boot lid - Scratch(es) - Smart repair



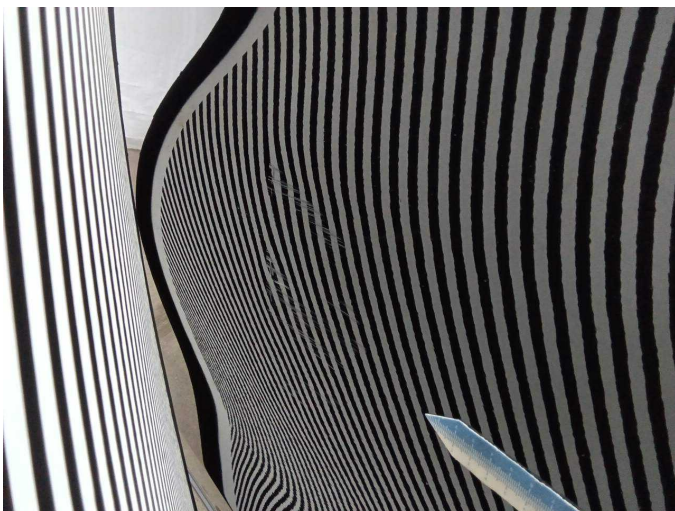
Damage 7: Boot lid / rear door: Boot lid - Scratch(es) - Smart repair



Damage 8: Sliding door, right: Sliding door - Dent / paintcoat damage - Smart repair



Damage 8: Sliding door, right: Sliding door - Dent / paintcoat damage - Smart repair



Damage 8: Sliding door, right: Sliding door - Dent / paintcoat damage - Smart repair



Damage 9: Rear bumper: Rear bumper - Scratch(es) - Paint



Damage 9: Rear bumper: Rear bumper - Scratch(es) - Paint



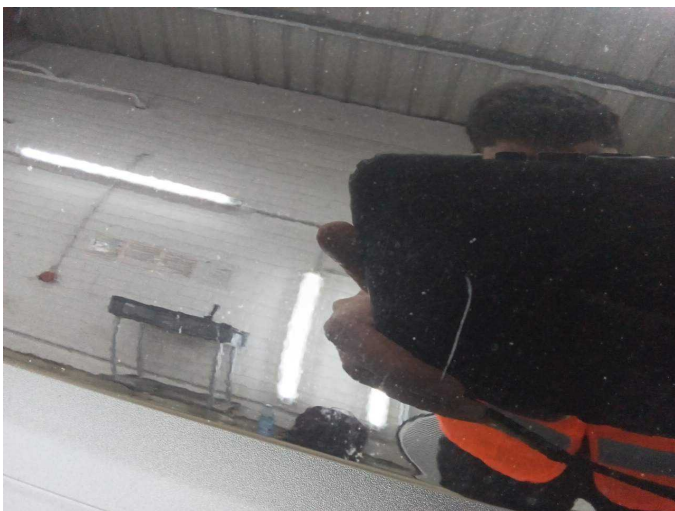
Damage 9: Rear bumper: Rear bumper - Scratch(es) - Paint



Damage 10: Bonnet: Bonnet - Scratch(es) - Paint



Damage 10: Bonnet: Bonnet - Scratch(es) - Paint



Damage 10: Bonnet: Bonnet - Scratch(es) - Paint



Damage 11: Vehicle glazing: Windscreen (kein Staubschutz) - Stone chips - repair according to calculation



Damage 11: Vehicle glazing: Windscreen (kein Staubschutz) - Stone chips - repair according to calculation