

Expertise

Protocol number: 45481875
Order No. / Reference: 26284199
Inspection date: 16 May 2026

Manufacturer: Skoda

Model: Kodiaq 2.0 TDI DSG Ambition

VIN: TMBJJ9NS2P8010945



Vehicle details

Manufacturer / Type / Model / Equipment

Skoda Kodiaq 2.0 TDI DSG Ambition

Vehicle Identification number TMBJJ9NS2P8010945

Mileage (Read) 116,417 km

First registration 23 Aug 2022

Number of holders 1

Power / Engine displacement 110 kw / 1,968 ccm

Fuel type / Cylinder Diesel / 4

Gearbox / Number of gears Automatic / 7

Type of drive Front drive

Type of vehicle SUV

Colour / colour code Blau Race Metallic

Doors / Seats 5 / 5

Upholstery type Cloth

Colour of upholstery Black-Grey

Type of use rental car

readiness to drive Roadworthy



Vehicle details

Maintenance booklet / proof	digital proof / complete	Next maintenance in	4,600 km
Last service on / at	05/2025 at 90,939 km		
Key is / should be	2 / 2	FZG documents	ZB#2 (B) was available (copy), ZB#1 (S) was not available.
		Letter No.	GJ952566
Previous damage / Accident	None detectable	Repainting	None detectable
Inspection conditions	sufficient	Lifting equipment / pit	yes
Test drive	Not performed	Engine function test	Performed
readiness to drive	Roadworthy		
Manufacturer key number/ type code number	8004 / ART 03443		
Emission standard	EURO6;WLTP;AP;PI/CI; M, N1 I	fine dust sticker	
Permitted total weight	2,350 kg	Empty weight	

Tyres

Mounted tyres

#	Tyre size	Type of tyre	Manufacturer	Tread depth
1)	215/65 R17 99H	Winter tyres on Light alloy	Continental	6mm / 6mm
2)	215/65 R17 99H	Winter tyres on Light alloy	Continental	6mm / 6mm

Additional tyres

#	Tyre size	Type of tyre	Manufacturer	Tread depth
1)	215/65 R17 99V	Summer tyres on Light alloy	Hankook	5mm / 5mm
2)	215/65 R17 99V	Summer tyres on Light alloy	Hankook	5mm / 5mm

Replacement

Typ	Tyre size	Type of tyre	Manufacturer	Tread depth
Tirefit		Expiration date 06/2026		

Legend: Tread depth information for the left tire is listed first, for the right tire it is listed second on the axle in the direction of travel.



Equipment

Standard equipment

- 12V socket in the center console and in the trunk
- Storage compartments behind the wheel arches in the trunk
- Airbag, driver's knee airbag
- Airbag, head airbags
- Allergen filter
- Traction control (ASR)
- Electrically folding exterior mirrors including interior and driver's side mirrors with automatic dimming
- Hill start assist
- Care Connect: Proactive services (10-year term) (Remote Access (1-year term))
- Decorative inlay, brushed aluminum
- Tachometer
- Easy Start (start-stop button)
- Electronic parking brake including auto-hold function
- Electronic transverse differential lock (XDS+)
- Driving light assistant and rain sensor ((tunnel light, coming and leaving home function))
- Front radar assistant including city emergency braking function with pedestrian detection
- Transmission: 7-speed dual-clutch transmission (DSG)
- Illuminated glove compartment
- Boot cover, roll-up and removable
- Front and rear headrests are height-adjustable.
- LED headlights with daytime running lights
- Steering wheel: Leather steering wheel with multifunction buttons including paddle shifters (height and reach adjustable)
- Engine drag torque control (MSR)
- Multi-collision brake
- Rear parking sensors
- Wheel arch cover (front and rear, made of plastic, black textured)
- Radio accessories: Digital radio reception DAB+
- Tire pressure monitoring
- Rear seat backrest split 60:40, foldable, longitudinally adjustable, backrest angle adjustable
- Headlights washer / wiper system
- Kodiahq safety belts (Height-adjustable three-point seat belts in the front, with belt tensioners - Three three-point seat belts in the rear - Belt fastening indicator in the front and in the second row of seats)
- Sun visor on driver and passenger side with illuminated vanity mirror
- Speed limiter
- Telephone: Comfort hands-free telephone system (without connection to the external antenna)
- Variable fastening concept in the trunk
- Lashing eyes in the trunk
- Immobiliser
- Storage compartment on the left wheel arch
- front aero windshield wipers
- Airbag for driver and front passenger (passenger airbag can be deactivated)
- Airbag, front side airbags
- Anti-lock braking system (ABS)
- Dashboard in black / black, door trim in black
- Electrically adjustable and heated exterior mirrors with integrated side indicators
- Hydraulic brake assist (HBA)
- Grey headliner
- Roof rails, black
- Diesel particulate filter
- Third brake light (in the rear spoiler (LED))
- eCall (automatic emergency call function in case of an accident with airbag deployment)
- ESC Electronic Stability Control
- Electric windows front and rear (including anti-pinch protection and child safety lock)
- Closed storage compartment on the driver's side
- Cruise control
- Tinted windows
- Isofix anchorage on the outer rear seats including top tether
- LED taillights in crystal glass look & LED license plate lights
- Reading lights at the front of the headliner
- Rear center armrest with cup holders
- Front center armrest, including storage compartment
- Multifunction display in the instrument cluster, color
- Fog lights with integrated LED daytime running lights
- Upholstery: Cloth
- Radio: Swing 6.5" music system
- Radio accessories: 8 speakers
- Tire mobility kit (tire repair spray incl. compressor)
- Wheels: 17" Mytikas alloy wheels (7Jx17 tires 215/65 R17 99V ET40)
- Heated windshield washer nozzles, front
- Electromechanical power steering
- Seats: Adjustable lumbar support in the front seats
- Seats: Height-adjustable front seats
- Skoda Care Connect (SOS emergency call function (eCall, including automatic activation in the event of an accident with airbag deployment) - Mobility service (connection for rapid assistance in case of breakdown) - Information service (connection to the hotline for all questions regarding vehicle functions) - Free remote vehicle access for one year with access to vehicle data/functions via smartphone, e.g., parking position, activating hazard warning lights, current fuel level, etc.)
- Central locking with remote control (two vehicle keys)



Extra equipment

- Swiveling trailer hitch (with electric release, including trailer stabilization)
- High Beam Assist (Light Assist)
- Climatronic air conditioning (3-zone) (fully automatic, separately adjustable for driver, front passenger and rear seats, including humidity sensor and odor and allergen filter)
- Electric panoramic sunroof including sunshade (no glasses compartment in the headliner)
- Proactive occupant protection including rear side airbags
- Radio: Bolero infotainment system (Bolero music system - 8" capacitive color display - SmartLink - Wireless SmartLink for Apple CarPlay - voice control)
- Seats: Heated front seats
- Variable loading floor in the trunk
- Area-View 360
- Traveller Plus (DSG) assistance system (Adaptive Cruise Control ACC (control range up to 210 km/h) - Lane Assist - Adaptive Lane Guidance - Park Assist - Traffic Jam and Emergency Assist - Traffic Sign Recognition)
- Paint finish: Metallic / Pearl effect
- Package: Business Columbus (Dynamic radio navigation system Columbus - 9.2" capacitive color display - Digital Cockpit Plus (10") - SmartLink - Wireless SmartLink for Apple CarPlay - Voice control - Phonebox with inductive charging function (connection via external antenna) - Driver fatigue detection - 230V socket and one USB charging port (Type-C) - Electric tailgate operation including comfort opening - Sunset - Acoustic glazing in the front doors - KESSY keyless entry - Luggage net partition - Infotainment Online (3-year subscription))

Brief expert findings

Documents submitted	At the time of the inspection, the vehicle registration certificate Part 2 (title) was available, but the vehicle registration certificate Part 1 (document) was not. (Copy)
VIN comparison	The vehicle identification number (VIN) was read from the vehicle and its conformity with the submitted documents was confirmed by the undersigned during the inspection.
Inspection	The inspection conditions were sufficient for the assessment of the vehicle. Lifting equipment and/or a pit were available for examining the vehicle.
Test drive	No test drive/shunting maneuver was carried out during the inspection of the vehicle.
Engine function test	An engine test run was performed.
readiness to drive	The vehicle was roadworthy at the time of inspection.

Value reducing factors

No.	Component group	Description
1	Side panel - rear left side	Side panel - dent(s) - Smooth repair work
2	Door - rear left side	Door - dent(s) - Smooth repair work
3	Door - rear right side	Door - dent(s) - Smooth repair work
4	Boot lid / rear door	Boot lid - dent(s) - Smooth repair work
5	Side panel - rear right side	Side panel - Scratch(es) - Smart repair
6	2nd wheel set	1 alloy rim - Scratch(es) - Loss in value
7	Rear bumper	Spoiler - Scratched - Replace
8	Rear bumper	Rear bumper - Scratch(es) - Repair and paint

Wear and tear

No.	Component group	Description
1	Vehicle glazing	Windscreen - Stone chips - No deduction
2	Bonnet	Bonnet - Stone chips - No deduction
3	Front bumper	Front bumper - Stone chips - No deduction

The vehicle shows signs of wear and tear commensurate with its age and use.



Missing parts

Description

Documents - Service book (Digitaler Ausdruck)

Documents - Log book

Order/Scope of Order

An order was placed to prepare a sales report for the described vehicle. This report includes the following:

- Description of key vehicle information
- Documentation of equipment features
(Delivery by third-party service providers)
- Documentation of damage, defects, missing parts
- Documentation of prior damage, unrepaired prior damage, repainting
- A brief visual or functional inspection of the equipment details, if possible.
(Functional testing of driver assistance systems is not included in the scope of services!)
- a photographic documentation of the vehicle

Basis for the order

This product is based on the guidelines for vehicle returns and valuations published by Alphabet Fleet GmbH. The expert makes the specific findings in each individual case objectively, within the framework of the prescribed standards, based on their own expertise.

The vehicle inspection takes place in a fully assembled, unassembled state.

Damage or defects that can only be detected during disassembly/diagnostic work or through further investigation remain within the realm of prognostic risk. An increased risk exists due to concealed defects caused by fraudulent misrepresentation and which were not identifiable by the expert.

Damage or defects resulting from normal use or wear and tear of the vehicle will be accepted in accordance with the applicable standard.

There was no explicit identification or monetary consideration of the expected features within the product.

Features which, in their nature and extent, slightly exceed normal use but do not constitute unacceptable damage, will be documented and indicated as signs of wear, if applicable.

Damage or defects that, according to the applicable standard, can no longer be attributed to normal use or wear and tear are listed under "Value Reducing Factors" in the product description.

Depending on the product specification, a monetary ID can be provided. If this takes place, the costs can be 100% d or pro rata depending on the vehicle's age and mileage.

Previous damages

No apparent prior damage that had been repaired could be found on the vehicle.

Comments

-Der montierte Winterradsatz ist kein Bestandteil des Auslieferungsumfangs.



Figure 1: Diagonal front (left)



Figure 2: Diagonal front (right)



Figure 3: Diagonal rear (left)



Figure 4: Diagonal rear (right)



Figure 5: Interior - front



Figure 6: Interior - rear



Figure 7: Instrument cluster



Figure 8: Instrument panel



Figure 9: Interior 360° view



Figure 10: Cargo area



Figure 11: VIN



Figure 12: Mounted tyres



Figure 13: Documents



Figure 14: Additional tyres



Figure 15: Additional tyres



Figure 16: Navigation



Figure 17: Misc.

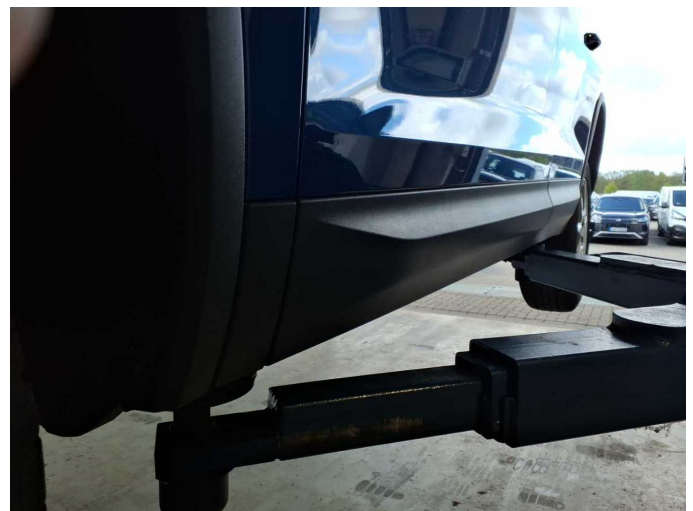


Figure 18: Misc.



Figure 19: Misc.



Figure 20: Misc.

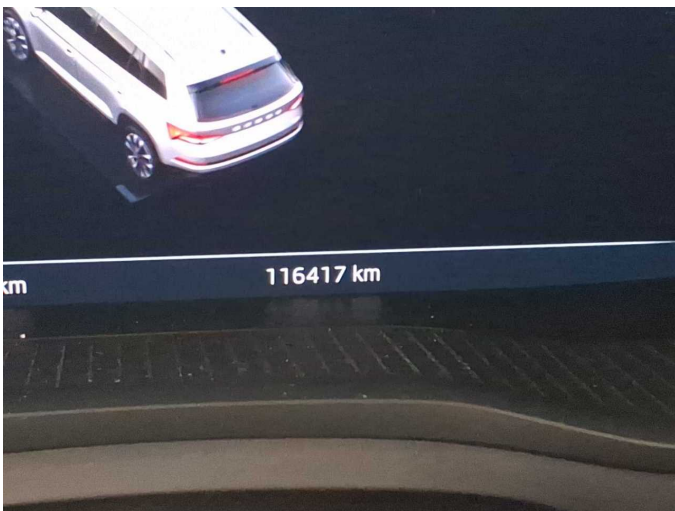


Figure 21: Misc.



Figure 22: Misc.



Figure 23: Misc.

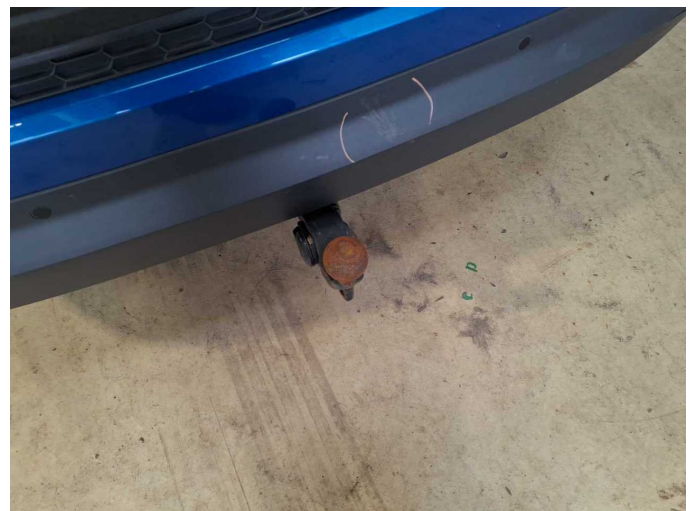


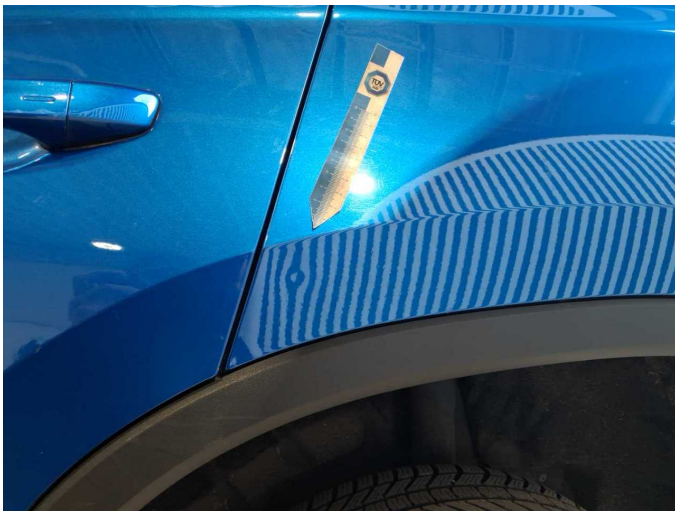
Figure 24: Misc.



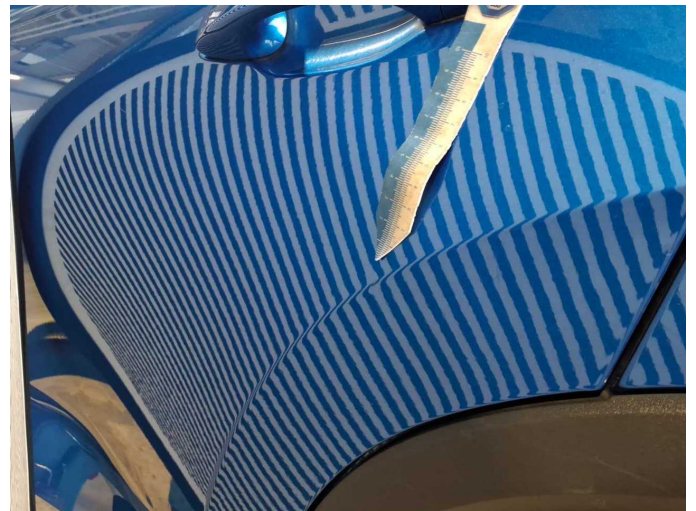
Figure 25: Misc.



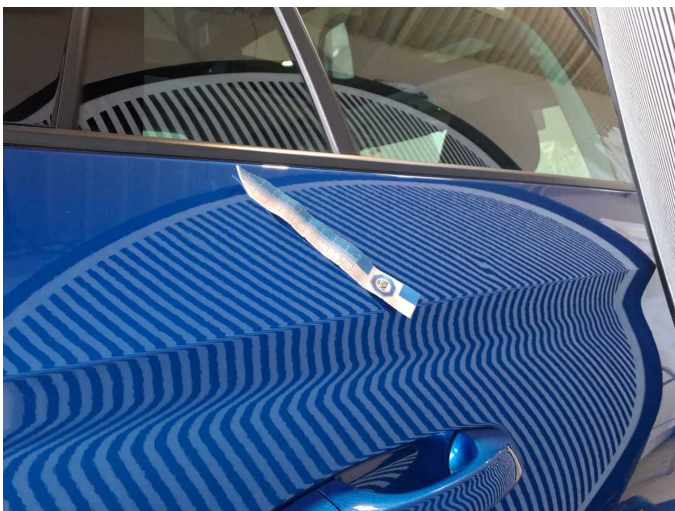
Figure 26: Misc.



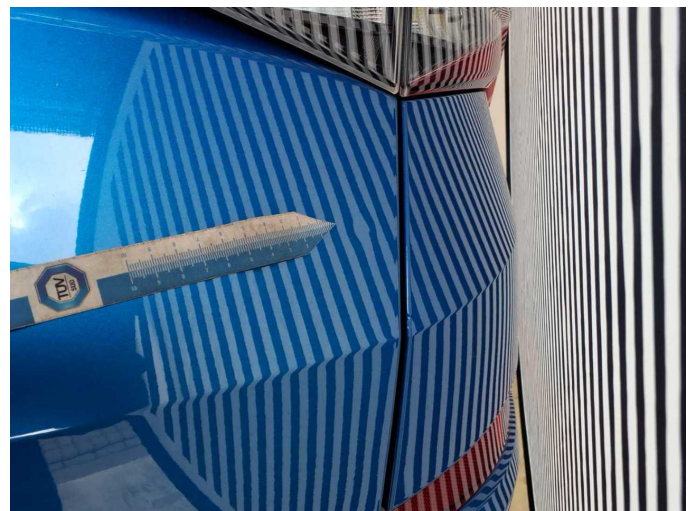
Damage 1: Side panel - rear left side: Side panel - dent(s) - Smooth repair work



Damage 2: Door - rear left side: Door - dent(s) - Smooth repair work



Damage 3: Door - rear right side: Door - dent(s) - Smooth repair work



Damage 4: Boot lid / rear door: Boot lid - dent(s) - Smooth repair work



Damage 4: Boot lid / rear door: Boot lid - dent(s) - Smooth repair work



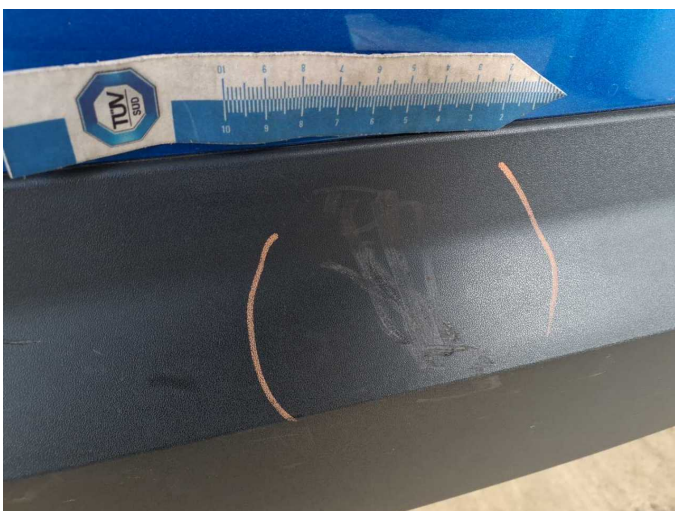
Damage 5: Side panel - rear right side: Side panel - Scratch(es) - Smart repair



Damage 6: 2nd wheel set: 1 alloy rim - Scratch(es) - Loss in value



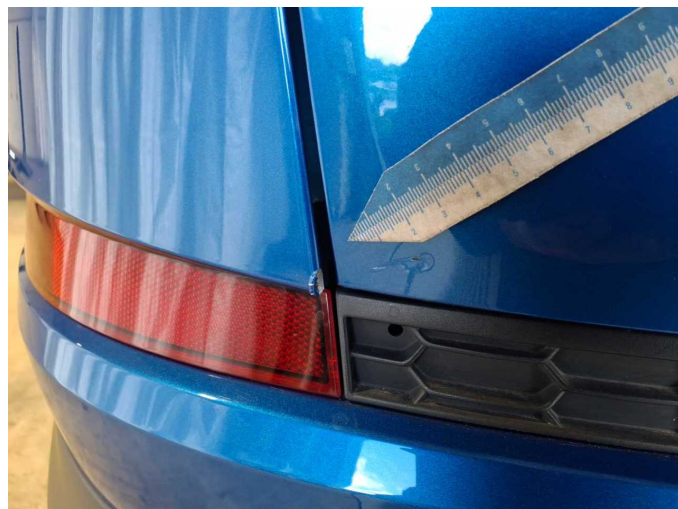
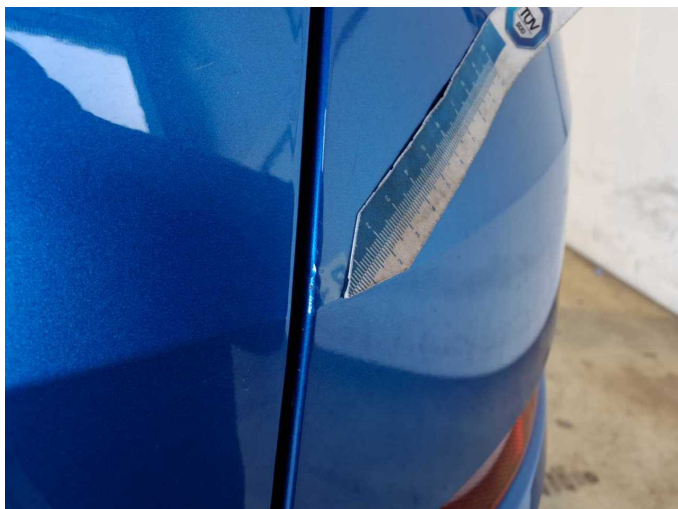
Damage 6: 2nd wheel set: 1 alloy rim - Scratch(es) - Loss in value



Damage 7: Rear bumper: Spoiler - Scratched - Replace



Damage 7: Rear bumper: Spoiler - Scratched - Replace



Damage 8: Rear bumper: Rear bumper - Scratch(es) - Repair and paint

Damage 8: Rear bumper: Rear bumper - Scratch(es) - Repair and paint



Wartungshistorie

(gemäß Auftraggeber Informationen)

Fahrgestellnummer: TMBJJ9NS2P8010945
Hersteller / Modell: SKODA SKODA Kodiaq 2.0 TDI DSG Ambition

Datum	KM-Stand	Beschreibung
19.12.2025	109.021	AU; Systemtest/Eigendiagnose
21.08.2025	98.075	Reparatur Sonstiges; Systemtest/Eigendiagnose
16.05.2025	90.939	Kraftstofffilter ern; Luftfiltereinsatz ern; Motoröl b. Wartung; Regelwartungsdienst
29.07.2024	61.807	Bremse Sonstiges; Bremsflüssigkeit; Bremsflüssigkeit ern; Bremsklötze hinten; Bremsklötze vorne; Bremsscheiben hinten; Bremsscheiben vorne; Motoröl b. Wartung; Ölfilter ern; Regelwartungsdienst; Wartung Sonstiges
24.08.2023	31.064	Motoröl b. Wartung; Ölfilter ern; Regelwartungsdienst; Wartung Sonstiges