

Expertise

Protocol number: 46055865
Order No. / Reference: 26452664
Inspection date: 18 Jun 2026

Manufacturer: Ford

Model: Transit Custom 280 L1H1 LKW VA Autm. Trend

VIN: WF0YXXTTGYLD82945



Vehicle details

Manufacturer / Type / Model / Equipment

Ford Transit Custom 280 L1H1 LKW VA Autm. Trend

Vehicle Identification number	WF0YXXTTGYLD82945
Mileage (Read)	104,016 km
First registration	7 Sept 2020
Number of holders	1
Next periodical technical inspection	01/2027
(Report on hand)	

Power / Engine displacement	96 kw / 1,995 ccm
------------------------------------	-------------------

Fuel type / Cylinder	Diesel / 4
-----------------------------	------------

Gearbox / Number of gears	Automatic / 6
----------------------------------	---------------

Type of drive	Front drive
----------------------	-------------

Type of vehicle	Van
------------------------	-----

Colour / colour code	Polar-Silber Metallic
-----------------------------	-----------------------

Doors / Seats	4 / 3
----------------------	-------

Upholstery type	Cloth
------------------------	-------

Colour of upholstery	Black-Anthracite
-----------------------------	------------------

Vehicle with smoke odor	no
--------------------------------	----



Vehicle details

Maintenance booklet / proof	digital proof / complete	Next maintenance in	35,000 km
Last service on / at	02/2026 at 95,168 km		
Key is / should be	2 / 2	FZG documents	ZB#2 (B) was available (copy), ZB#1 (S) was not available.
		Letter No.	FV085409
Previous damage / Accident	None detectable	Repainting	None detectable
Inspection conditions	sufficient	Lifting equipment / pit	yes
Test drive	Not performed	Engine function test	Performed
Manufacturer key number/ type code number	8566 / BMU 05613		
Emission standard	EURO6;WLTP;CI;PI/CI;N1 III, N2	fine dust sticker	
Permitted total weight	2,800 kg	Empty weight	

Tyres

Mounted tyres

#	Tyre size	Type of tyre	Manufacturer	Tread depth
1)	215/65 R16 109T	Summer tyres on Steel rim with wheel cover	Goodyear	4mm / 4mm
2)	215/65 R16 109T	Summer tyres on Steel rim with wheel cover	Goodyear	4mm / 4mm

Additional tyres

#	Tyre size	Type of tyre	Manufacturer	Tread depth
1)	215/65 R16 107R	Winter tyres on Steel	Continental	5mm / 5mm
2)	215/65 R16 107R	Winter tyres on Steel	Continental	5mm / 5mm

Replacement

Typ	Tyre size	Type of tyre	Manufacturer	Tread depth
E	215/65 R16 109T	Summer tyres on Steel	Goodyear	7 mm

Legend: Tread depth information for the left tire is listed first, for the right tire it is listed second on the axle in the direction of travel.



Equipment

Standard equipment

- 1 battery
- Anti-lock braking system with electronic brake force distribution (EBD)
- roof, flat
- Double-leaf rear door with 180° opening angle (without window)
- Electronic Stability Program (ESP) with Traction Control System (TCS)
- FordPass Connect
- Generator, 240 A
- Cruise control including leather steering wheel
- Lockable glove compartment with lid
- Interior lighting with delay circuit
- Paint finish: Solid color paint
- Cargo area floor: Vinyl floor covering, sealed, "Easy Clean"
- Emergency brake assist including emergency brake light
- Front and rear parking pilot system including fog lights
- Radio: Audio system 13 additionally with DAB/DAB+
- Wheels/Tires: Spare wheel, steel wheel
- Headlights: Halogen projector headlights
- Sliding door: Sliding door, right
- Mud flaps front and rear
- Low side paneling
- Seat belts
- Start-stop system
- Power outlet: 12-volt connection
- Lashing eyes 8
- Heat-insulating glazing, lightly tinted
- Auxiliary heater, electric

Extra equipment

- Airbag (passenger side)
- Lane Assist
- LED lights in the cargo area
- Package: Smoker (cigarette lighter and ashtray)
- Paint finish: Metallic
- Radio: Audio System 24: Ford audio system including Ford SYNC 3 with AppLink, DAB/DAB+, navigation system. (Radio (FM/AM) 8" touchscreen multifunction display (20.32 cm), 4 speakers, FordPass Connect Wi-Fi hotspot, integrated control panel and audio remote control on the steering wheel, Ford SYNC 3 with touchscreen (hands-free system with voice control, SMS readout/sending function, Bluetooth, Emergency Assistance...), AppLink (advanced voice control, privacy mode, Android Auto and Apple CarPlay support, capacitive touchscreen technology,...), dynamic navigation, lane guidance, road map for Western Europe)

- Driver's side airbag
- Exterior mirrors, electrically adjustable and heated
- On-board computer
- Headliner in driver's cab
- Tachometer
- Third brake light
- Front electric windows
- Ford Easy Fuel
- Warranty: 2-year Ford new car warranty including Ford Assistance mobility guarantee
- Transmission: 6-speed SelectShift automatic transmission
- Front air conditioning
- Cargo area lighting with activatable switch-off delay
- Steering column, adjustable in height and reach
- Package: Style-Color Package
- Particulate filter: diesel particulate filter
- Wheel trims
- Wheels: Steel wheels 6.5 J x 16 with 215/65 R 16 R tires
- Sliding door entry light automatically illuminates when the door is opened
- Side protection strips
- Power steering
- Seats: Seat package 13 - partition (load-through flap), without window (Custom Truck Trend)
- Front bumper in body color
- Immobiliser
- Central locking with remote control
- Second key with remote control

- Seats: Seat Package 15 - Partition (load-through hatch), with window (Custom Truck Trend) (Driver's seat, 4-way adjustable (forward/backward, backrest, seat cushion tilt, height) - Double passenger seat with storage compartment under individually foldable seat cushions - Height-adjustable headrests - Integrated tray in the double passenger seat (fold-out) - Heated driver's seat - Heated passenger seat (outer seat) - Inner armrest for driver - Manual lumbar support (driver's seat) - TREND seat cover: fabric - Partition with window and load-through hatch)
- Visibility Package III (Electrically adjustable and heated exterior mirrors - Heated windscreen - Windscreen washer fluid sensor - Electrically folding exterior mirrors - Rain-sensing wipers - Automatic headlights with day/night sensor - Lane Keeping Assist with Driver Alert and High Beam Assist - Rearview camera - Connected Radio audio system, DAB/DAB+, FordPass Connect 8" touchscreen, antenna control panel and audio remote control on the steering wheel - Android Auto and Apple CarPlay support)



Retrofitted equipment

- Interior design
- Samsung Smartphone

Brief expert findings

Documents submitted	At the time of the inspection, the vehicle registration certificate Part 2 (title) was available, but the vehicle registration certificate Part 1 (document) was not. (Copy)
VIN comparison	The vehicle identification number (VIN) was read from the vehicle and its conformity with the submitted documents was confirmed by the undersigned during the inspection.
Inspection	The inspection conditions were sufficient for the assessment of the vehicle. Lifting equipment and/or a pit were available for examining the vehicle.
Test drive	No test drive/shunting maneuver was carried out during the inspection of the vehicle.
Engine function test	An engine test run was performed.

Value reducing factors

No.	Component group	Description
1	Front bumper	Front bumper - Scratch(es) - Smart repair
2	Sill - right side	Sill - dent(s) - Smart repair
3	Door - front right side	Door - Dent / paintcoat damage - Smart repair
4	Body	Body - Glued / labelled - De-glue / neutralise
5	Vehicle glazing	Windscreen - Broken / torn - repair according to calculation

Wear and tear

No.	Component group	Description
1	Interior	Interior - Scratch(es) - No deduction
2	Body	Body - Scratch(es) - No deduction
3	Boot lid / rear door	Rear door - left side - dent(s) - Smooth repair work
4	Boot lid / rear door	Rear door - right side - dent(s) - Smooth repair work
5	Boot lid / rear door	Rear door - right side (innen) - Scratch(es) - No deduction

The vehicle shows signs of wear and tear commensurate with its age and use.

Missing parts

Description

Documents - Log book

Order/Scope of Order

An order was placed to prepare a sales report for the described vehicle. This report includes the following:

- Description of key vehicle information
- Documentation of equipment features
(*Delivery by third-party service providers*)
- Documentation of damage, defects, missing parts
- Documentation of prior damage, unrepaired prior damage, repainting
- A brief visual or functional inspection of the equipment details, if possible.
(*Functional testing of driver assistance systems is not included in the scope of services!*)
- a photographic documentation of the vehicle



Basis for the order

This product is based on the guidelines for vehicle returns and valuations of light commercial vehicles published by Alphabet Fleet Management GmbH. The expert makes the specific findings in each individual case objectively, within the framework of the prescribed standards, based on their own expertise.

The vehicle inspection takes place in a fully assembled, unassembled state.

Damage or defects that can only be detected during disassembly/diagnostic work or through further investigation remain within the realm of prognostic risk. An increased risk exists due to concealed defects caused by fraudulent misrepresentation and which were not identifiable by the expert.

Damage or defects resulting from normal use or wear and tear of the vehicle will be accepted in accordance with the applicable standard.

There was no explicit identification or monetary consideration of the expected features within the product.

Features which, in their nature and extent, slightly exceed normal use but do not constitute unacceptable damage, will be documented and indicated as signs of wear, if applicable.

Damage or defects that, according to the applicable standard, can no longer be attributed to normal use or wear and tear are listed under "Value Reducing Factors" in the product description.

Depending on the product specification, a monetary ID can be provided. If this takes place, the costs can be 100% d or pro rata depending on the vehicle's age and mileage.

Previous damages

No apparent prior damage that had been repaired could be found on the vehicle.



Figure 1: Diagonal front (left)



Figure 2: Diagonal front (right)



Figure 3: Diagonal rear (left)



Figure 4: Diagonal rear (right)



Figure 5: Interior - front



Figure 6: Interior - rear



Figure 7: Instrument cluster



Figure 8: Instrument panel



Figure 9: Interior 360° view



Figure 10: Cargo area



Figure 11: VIN



Figure 12: Mounted tyres



Figure 13: Documents

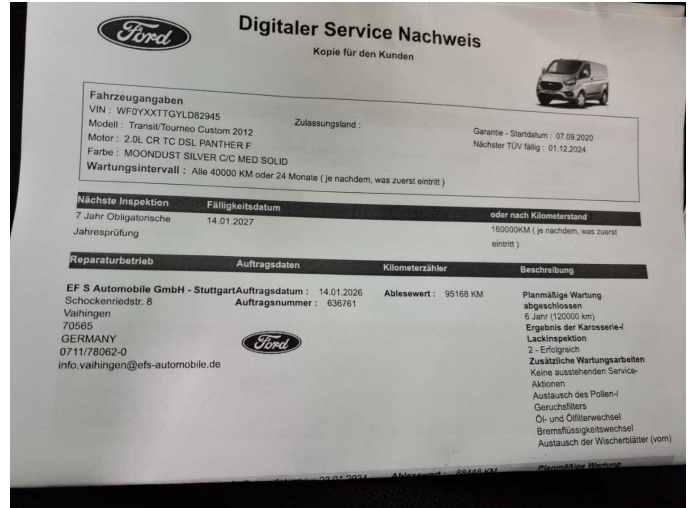


Figure 14: Documents



Figure 15: Documents



Figure 16: Documents



Figure 17: Additional tyres



Figure 18: Additional tyres



Figure 19: Navigation



Figure 20: Misc.



Figure 21: Misc.



Figure 22: Misc.



Figure 23: Misc.



Figure 24: Misc.



Figure 25: Misc.



Figure 26: Misc.



Figure 27: Misc.



Figure 28: Misc.



Figure 29: Misc.



Damage 1: Front bumper: Front bumper - Scratch(es) - Smart repair



Damage 1: Front bumper: Front bumper - Scratch(es) - Smart repair



Damage 2: Sill - right side: Sill - dent(s) - Smart repair



Damage 2: Sill - right side: Sill - dent(s) - Smart repair



Damage 2: Sill - right side: Sill - dent(s) - Smart repair



Damage 2: Sill - right side: Sill - dent(s) - Smart repair



Damage 3: Door - front right side: Door - Dent / paintcoat damage - Smart repair



Damage 3: Door - front right side: Door - Dent / paintcoat damage - Smart repair



Damage 3: Door - front right side: Door - Dent / paintcoat damage - Smart repair



Damage 4: Body: Body - Glued / labelled - De-glug / neutralise



Damage 4: Body: Body - Glued / labelled - De-glug / neutralise



Damage 4: Body: Body - Glued / labelled - De-glug / neutralise



Damage 4: Body: Body - Glued / labelled - De-glug / neutralise



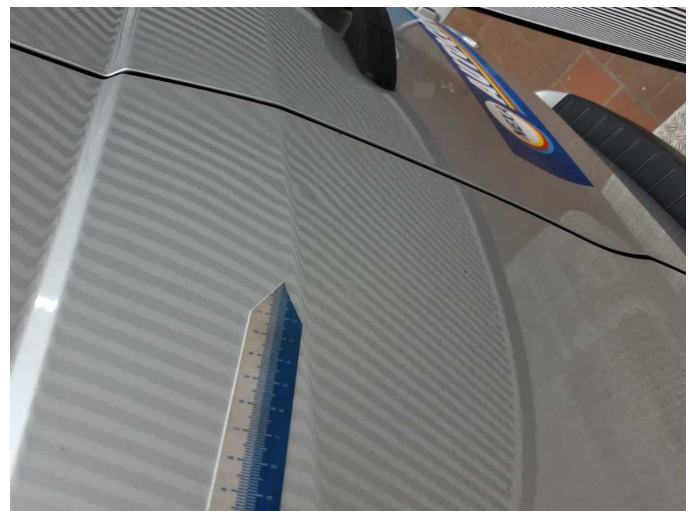
Damage 5: Vehicle glazing: Windscreen - Broken / torn - repair according to calculation



Damage 5: Vehicle glazing: Windscreen - Broken / torn - repair according to calculation



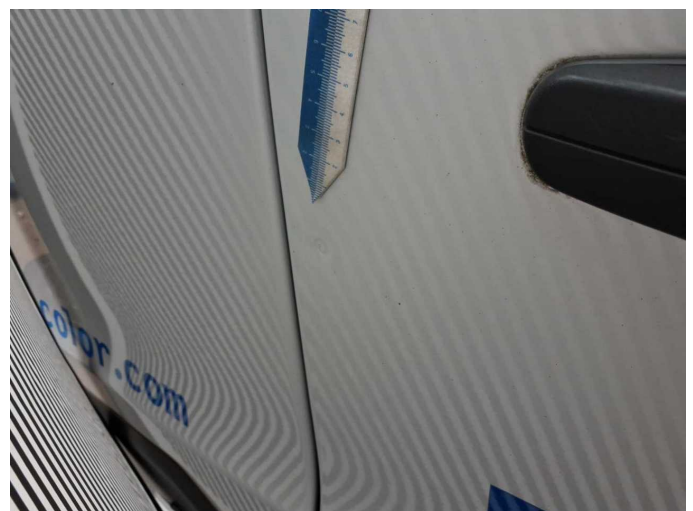
Wear and tear 3: Boot lid / rear door: Rear door - left side - dent(s) - Smooth repair work



Wear and tear 3: Boot lid / rear door: Rear door - left side - dent(s) - Smooth repair work



Wear and tear 4: Boot lid / rear door: Rear door - right side - dent(s) - Smooth repair work



Wear and tear 4: Boot lid / rear door: Rear door - right side - dent(s) - Smooth repair work



Wear and tear 5: Boot lid / rear door: Rear door - right side (innen) -
Scratch(es) - No deduction



Wear and tear 5: Boot lid / rear door: Rear door - right side (innen) -
Scratch(es) - No deduction



Wear and tear 5: Boot lid / rear door: Rear door - right side (innen) -
Scratch(es) - No deduction



Wear and tear 5: Boot lid / rear door: Rear door - right side (innen) -
Scratch(es) - No deduction



Wartungshistorie

(gemäß Auftraggeber Informationen)

Fahrgestellnummer: WF0YXXTTGYLD82945

Hersteller / Modell: FORD FORD Transit Custom 280 L1H1 LKW VA Autm. Trend

Datum	KM-Stand	Beschreibung
02.02.2026	95.168	Bremsflüssigkeit; Bremsflüssigkeit ern; Motoröl b. Wartung; Ölfilter ern; Regelwartungsdienst; Wartung Sonstiges
08.01.2025	91.867	AU; Bremsbelagfühler ern; Bremse Sonstiges; Bremsklötze hinten; Bremsscheiben + Klötze h; Bremsscheiben hinten
04.01.2024	88.448	Luftfiltereinsatz ern; Motoröl b. Wartung; Ölfilter ern; Regelwartungsdienst; Wartung Sonstiges
13.07.2023	70.202	Bremsbelagfühler ern; Bremse Sonstiges; Bremsklötze hinten; Bremsklötze vorne; Bremsscheiben + Klötze h; Bremsscheiben + Klötze v; Bremsscheiben hinten; Bremsscheiben vorne
02.12.2022	44.595	AU; Bremsbelagfühler ern; Bremsflüssigkeit; Bremsflüssigkeit ern; Bremsklötze hinten; Motoröl b. Wartung; Ölfilter ern; Regelwartungsdienst; Wartung Sonstiges
25.08.2021	24.833	Bremse Sonstiges; Bremsklötze vorne; Bremsscheiben + Klötze v; Bremsscheiben vorne