

Expertise

Protocol number: 46028429
Order No. / Reference: 26494723
Inspection date: 17 Jun 2026

Manufacturer: Opel

Model: Astra Sports Tourer 1.5 D Automatik GS

VIN: VXKFCYHZTP1077275



Vehicle details

Manufacturer / Type / Model / Equipment

Opel Astra Sports Tourer 1.5 D Automatik GS

Vehicle Identification number VXKFCYHZTP1077275

Mileage (Read) 160,013 km

First registration 26 Jan 2024

Number of holders 1

Power / Engine displacement 96 kw / 1,499 ccm

Fuel type / Cylinder Diesel / 4

Gearbox / Number of gears Automatic / 8

Type of drive Front drive

Type of vehicle Station wagon

Colour / colour code Vulkan Grau

Doors / Seats 5 / 5

Upholstery type Leather

Colour of upholstery Black-Anthracite



Vehicle details

Maintenance booklet / proof	digital proof / complete	Next maintenance in	
Last service on / at	02/2026 at 151,635 km		
Key is / should be	2 / 2	FZG documents	ZB#2 (B) was available (copy), ZB#1 (S) was not available.
		Letter No.	GY757164
Previous damage / Accident	None detectable	Repainting	None detectable
Inspection conditions	sufficient	Lifting equipment / pit	No
Test drive	Not performed	Engine function test	Performed
Manufacturer key number/ type code number	1889 / AEY 00088		
Emission standard	EURO6;WLTP;AP;PI/CI; M, N1 I	fine dust sticker	
Permitted total weight	1,980 kg	Empty weight	

Tyres

Mounted tyres

#	Tyre size	Type of tyre	Manufacturer	Tread depth
1)	205/55 R16 91H	Winter tyres on Light alloy	Pirelli	3mm / 3mm
2)	205/55 R16 91H	Winter tyres on Light alloy	Pirelli	3mm / 3mm

Additional tyres

#	Tyre size	Type of tyre	Manufacturer	Tread depth
1)	225/40 R18 92Y	Summer tyres on Light alloy	Michelin	5mm / 5mm
2)	225/40 R18 92Y	Summer tyres on Light alloy	Vredestein	7mm / 7mm

Replacement

Typ	Tyre size	Type of tyre	Manufacturer	Tread depth
	Tirefit	Expiration date 05/2029		

Legend: Tread depth information for the left tire is listed first, for the right tire it is listed second on the axle in the direction of travel.



Equipment

Standard equipment

- Storage compartments
- Airbag: Front airbags, driver and front passenger
- Airbag: Front and rear outer head airbags
- Anti-lock braking system (ABS)
- Exterior mirrors, electrically adjustable, heated and folding
- Hill Start Assist
- third brake light
- Headliner, Black
- Tachometer
- Electronic Stability Program (ESP) and Traction Control with engine and brake intervention (TCPlus)
- Back window, heater
- Interior rearview mirror, automatically dimming
- Dual-zone automatic climate control
- Paint finish: Roof in carbon black
- LED interior lighting
- Steering wheel: Leather steering wheel, flattened, perforated, with steering wheel remote control and paddle shifters
- Multimedia infotainment system
- Opel Blitz logo, Astra lettering on the rear
- Electric parking brake
- Tire repair kit
- Wheels: Alloy wheels 7.5 J x 17 (5 spokes) in silver/black
- Rear seat backrest folds forward in a 40:20:40 split
- Seat belts: Three-point seat belts in all seats
- Heated seats, driver and passenger
- Start/Stop System
- Pre-wiring for ISOFIX child seat mounting system
- Central locking with remote control

Extra equipment

- Detachable trailer hitch (including trailer stability program TSP)
- Intelli-Air air quality system "Clean Cabin"
- Paint finish: Metallic
- Roof rails
- Ultimate equipment
- Wheels: Alloy wheels 7.5 J x 18 (5 spokes) in BiColor/Black (with tires 225/40 R 18)

- Airbag: Chest-pelvis-side airbags, driver and front passenger
- Aluminum pedals
- Automatic activation of the hazard warning lights
- Exterior mirror housings in black
- On-board computer
- Roof design line, in black
- Diesel particulate filter (DPF) maintenance-free
- Electronic brake force distribution (EBD)
- Electric windows front and rear
- Transmission: 8-speed automatic transmission
- rear window wiper
- Wiring harness for trailer hitch
- Front headrests and 3 rear headrests, height adjustable
- LED ambient lighting
- LED headlights
- Steering wheel heating
- Illuminated makeup mirrors in both sun visors
- Center armrest, front and rear
- Fog light
- Opel Vizor with frame in high-gloss black
- Parkpilot, front and rear parking aid
- Tire pressure monitoring system
- Reversing camera: 360-degree reversing camera
- Keyless locking and starting system Keyless Open & Start
- Seats: Ergonomic sport active seat driver Stoff Greta/Premium leather look
- 12V power outlet in the center console
- Electronic immobilizer

- Anti-theft alarm system (burglar alarm - deterrent signal - interior monitoring - tilt monitoring - monitoring of luggage compartment, doors and hood)
- Seats: Ergonomic sport active seats for driver and front passenger, Alcantara upholstery (Ergonomic sport active seats, certified by the German Campaign for Healthy Backs (AGR), driver and front passenger - Alcantara, black, including seat contact surfaces and door panels partially in Alcantara - adjustable length, height, tilt, backrest tilt, and seat cushion tilt - memory function for driver's seat - electro-pneumatically adjustable lumbar support in height and length - extendable thigh support - pocket on the front seat backs - heated front seats and heated steering wheel)



Brief expert findings

Documents submitted	At the time of the inspection, the vehicle registration certificate Part 2 (title) was available, but the vehicle registration certificate Part 1 (document) was not. (Copy)
VIN comparison	The vehicle identification number (VIN) was read from the vehicle and its conformity with the submitted documents was confirmed by the undersigned during the inspection.
Inspection	The inspection conditions were sufficient for the assessment of the vehicle. No lifting equipment or pit was available for inspecting the vehicle. Therefore, inspection of the vehicle's underside was only possible to a limited extent.
Test drive	No test drive/shunting maneuver was carried out during the inspection of the vehicle.
Engine function test	An engine test run was performed.

Value reducing factors

No.	Component group	Description
1	2nd wheel set	1 alloy rim - Scratch(es) - Loss in value
2	Roof	Roof (Anätzung) - Paint defect - Repair and paint

Wear and tear

No.	Component group	Description
1	Trim / covers	Boot lid - interior trim - Scratch(es) - No deduction
2	Front bumper	Front bumper - Stone chips - No deduction
3	Vehicle glazing	Windscreen - Stone chips - No deduction
4	Bonnet	Bonnet - Stone chips - No deduction

The vehicle shows signs of wear and tear commensurate with its age and use.

Order/Scope of Order

An order was placed to prepare a sales report for the described vehicle. This report includes the following:

- Description of key vehicle information
- Documentation of equipment features
(*Delivery by third-party service providers*)
- Documentation of damage, defects, missing parts
- Documentation of prior damage, unrepaired prior damage, repainting
- A brief visual or functional inspection of the equipment details, if possible.
(*Functional testing of driver assistance systems is not included in the scope of services!*)
- a photographic documentation of the vehicle



Basis for the order

This product is based on the guidelines for vehicle returns and valuations published by Alphabet Fleet GmbH. The expert makes the specific findings in each individual case objectively, within the framework of the prescribed standards, based on their own expertise.

The vehicle inspection takes place in a fully assembled, unassembled state.

Damage or defects that can only be detected during disassembly/diagnostic work or through further investigation remain within the realm of prognostic risk. An increased risk exists due to concealed defects caused by fraudulent misrepresentation and which were not identifiable by the expert.

Damage or defects resulting from normal use or wear and tear of the vehicle will be accepted in accordance with the applicable standard.

There was no explicit identification or monetary consideration of the expected features within the product.

Features which, in their nature and extent, slightly exceed normal use but do not constitute unacceptable damage, will be documented and indicated as signs of wear, if applicable.

Damage or defects that, according to the applicable standard, can no longer be attributed to normal use or wear and tear are listed under "Value Reducing Factors" in the product description.

Depending on the product specification, a monetary ID can be provided. If this takes place, the costs can be 100% d or pro rata depending on the vehicle's age and mileage.

Previous damages

No apparent prior damage that had been repaired could be found on the vehicle.

Comments

-Der montierte Winterradsatz ist kein Bestandteil des Auslieferungsumfangs.



Figure 1: Diagonal front (left)



Figure 2: Diagonal front (right)



Figure 3: Diagonal rear (left)



Figure 4: Diagonal rear (right)



Figure 5: Interior - front



Figure 6: Interior - rear



Figure 7: Instrument cluster



Figure 8: Instrument panel



Figure 9: Interior 360° view



Figure 10: Cargo area

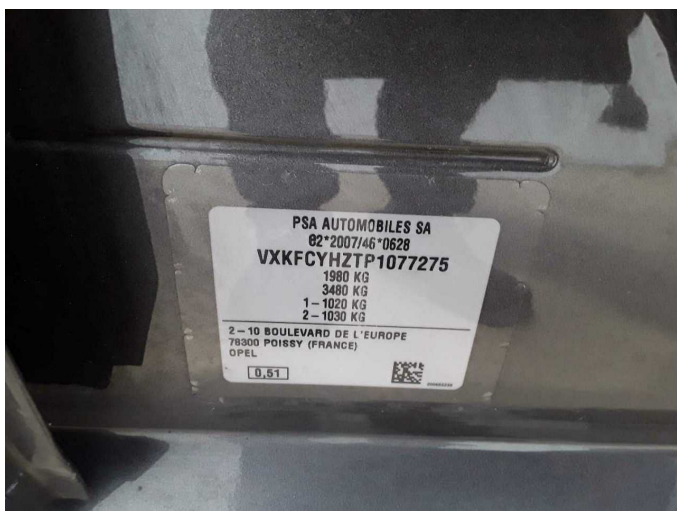


Figure 11: VIN



Figure 12: Mounted tyres

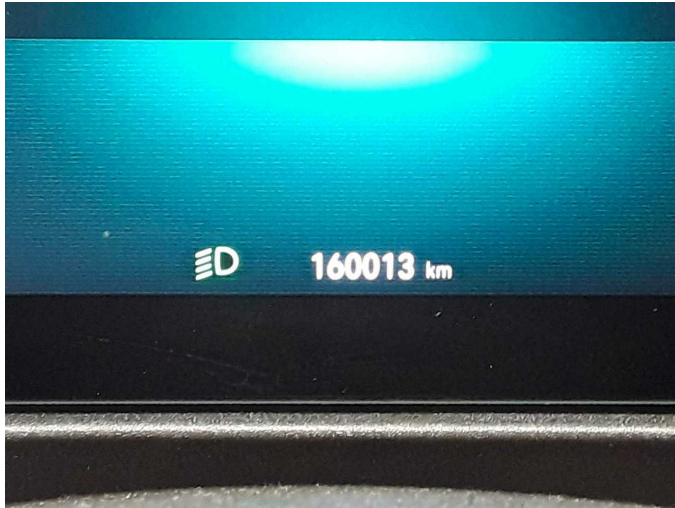


Figure 13: Documents

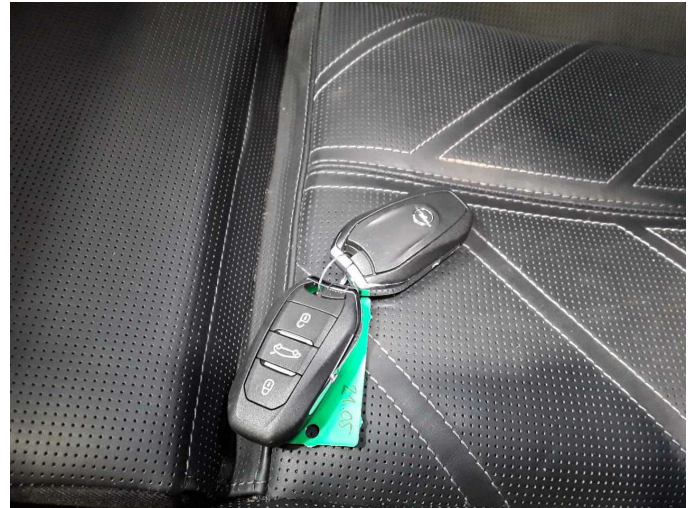


Figure 14: Documents



Figure 15: Additional tyres

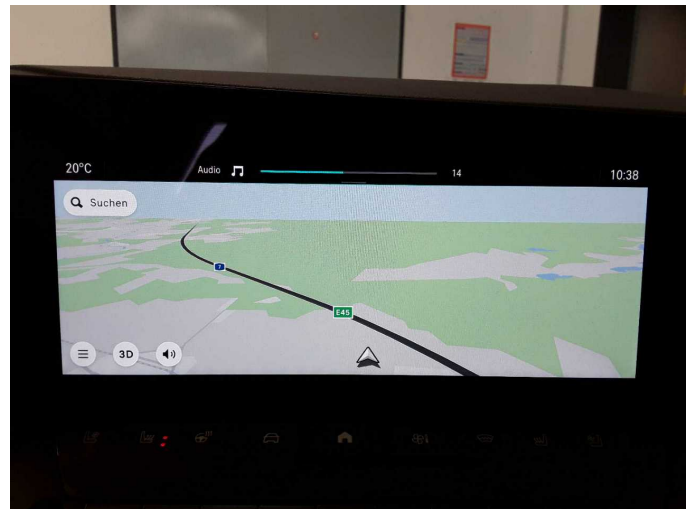


Figure 16: Navigation

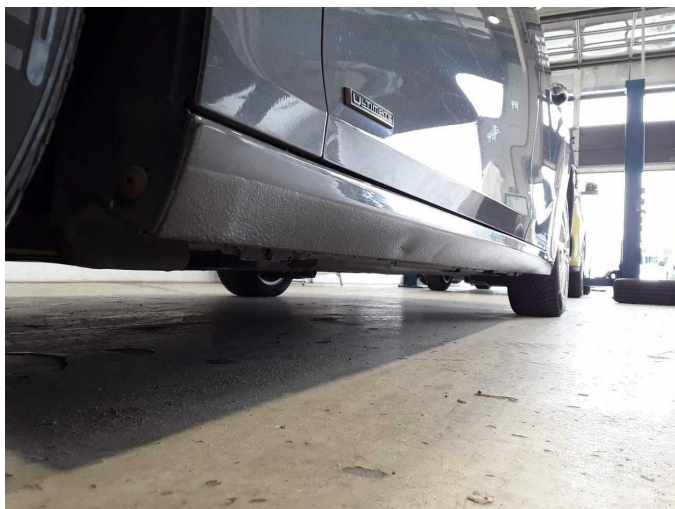


Figure 17: Misc.



Figure 18: Misc.



Figure 19: Misc.



Figure 20: Misc.



Figure 21: Misc.



Figure 22: Misc.



Figure 23: Misc.

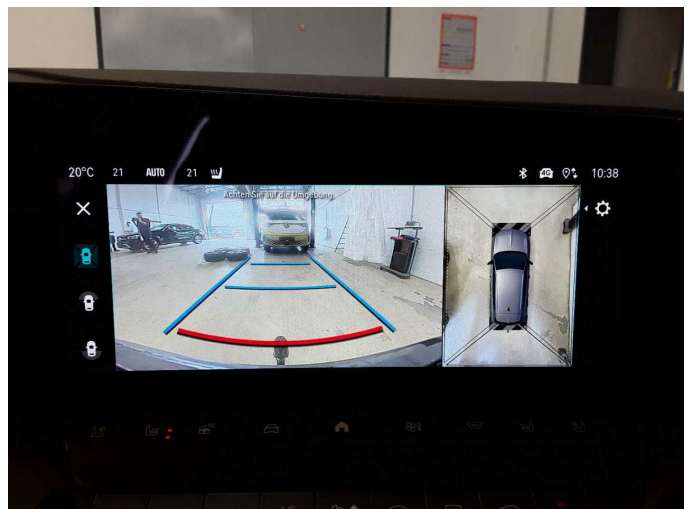


Figure 24: Misc.



Figure 25: Misc.



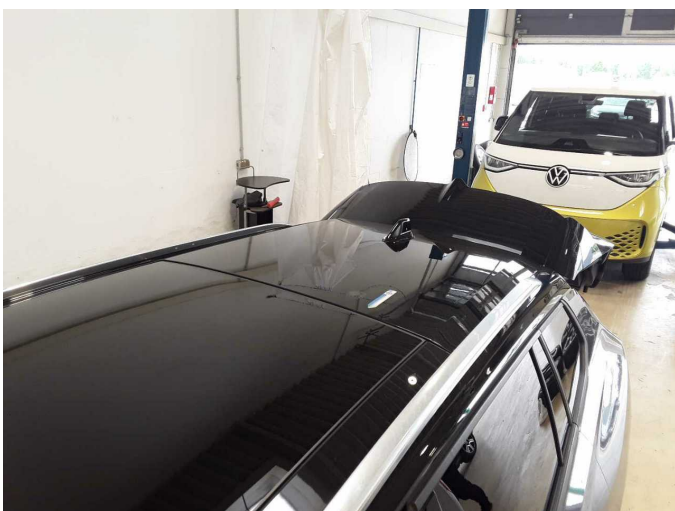
Figure 26: Misc.



Damage 1: 2nd wheel set: 1 alloy rim - Scratch(es) - Loss in value



Damage 1: 2nd wheel set: 1 alloy rim - Scratch(es) - Loss in value



Damage 2: Roof: Roof (Anätzung) - Paint defect - Repair and paint



Damage 2: Roof: Roof (Anätzung) - Paint defect - Repair and paint



Damage 2: Roof: Roof (Anätzung) - Paint defect - Repair and paint



Wartungshistorie

(gemäß Auftraggeber Informationen)

Fahrgestellnummer: VXXKFCYHZTP1077275

Hersteller / Modell: OPEL OPEL Astra Sports Tourer 1.5 D Automatik GS

Datum	KM-Stand	Beschreibung
18.02.2026	151.635	Bremsflüssigkeit; Bremsflüssigkeit ern; Motoröl b. Wartung; Ölfilter ern; Regelwartungsdienst; Systemtest/Eigendiagnose; Wartung Sonstiges
13.10.2025	122.662	Keilrippenriemen; Kraftstofffilter ern; Luftfiltereinsatz ern; Motoröl b. Wartung; Ölfilter ern; Regelwartungsdienst; Wartung Sonstiges
23.06.2025	100.583	Motoröl b. Wartung; Ölfilter ern; Regelwartungsdienst; Wartung Sonstiges
06.05.2025	93.044	Bremse Sonstiges; Bremsklötze hinten; Bremsscheiben + Klötze h; Bremsscheiben hinten
14.02.2025	76.634	Motoröl b. Wartung; Ölfilter ern; Regelwartungsdienst; Wartung Sonstiges
07.11.2024	52.890	Bremse Sonstiges; Bremsklötze vorne; Bremsscheiben vorne; Kraftstofffilter ern; Luftfiltereinsatz ern; Motoröl b. Wartung; Ölfilter ern; Regelwartungsdienst; Wartung Sonstiges
25.06.2024	27.429	Motoröl b. Wartung; Ölfilter ern; Regelwartungsdienst; Wartung Sonstiges