

## Expertise

Protocol number: 46164652  
Order No. / Reference: 26496835  
Inspection date: 26 Jun 2026

Manufacturer: Ford

Model: Transit Connect 240 L1 Trend

VIN: WF0RXXWPGRNJ49478



### Vehicle details

#### Manufacturer / Type / Model / Equipment

Ford Transit Connect 240 L1 Trend

**Vehicle Identification number** WF0RXXWPGRNJ49478

**Mileage (Read)** 35,516 km

**First registration** 2 Dec 2022

**Number of holders** 1

**Next periodical technical inspection** 12/2026  
(Report on hand)

**Power / Engine displacement** 88 kw / 1,499 ccm

**Fuel type / Cylinder** Diesel / 4

**Gearbox / Number of gears** Manual / 6

**Type of drive** Front drive

**Type of vehicle** Van

**Colour / colour code** Frost-Weiß

**Doors / Seats** 4 / 2

**Upholstery type** Cloth

**Colour of upholstery** Black



**Vehicle details**

|  |                            |                                |  |
|--|----------------------------|--------------------------------|--|
| <b>Maintenance booklet / proof</b>               | digital proof / complete   | <b>Next maintenance in</b>     | 23 %   |
| <b>Last service on / at</b>                      | 12/2024 at 26,765 km       |                                |  |
| <b>Key is / should be</b>                        | 3 / 3                      | <b>FZG documents</b>           | ZB#2 (B) was available (copy), ZB#1 (S) was not available. |
|  |                            | <b>Letter No.</b>              | GK841483   |
| <b>Previous damage / Accident</b>                | None detectable            | <b>Repainting</b>              | None detectable  |
| <b>Inspection conditions</b>                     | sufficient                 | <b>Lifting equipment / pit</b> | yes  |
| <b>Test drive</b>                                | Not performed              | <b>Engine function test</b>    | Performed  |
| <b>Manufacturer key number/ type code number</b> | 8566 / BMN 02449           |                                |  |
| <b>Emission standard</b>                         | EURO6;WLTP;AQ;PI/CI; N1 II | <b>fine dust sticker</b>       |  |
| <b>Permitted total weight</b>                    | 2,400 kg                   | <b>Empty weight</b>            |  |

**Tyres**

**Mounted tyres**

| #  | Tyre size      | Type of tyre                               | Manufacturer | Tread depth |
|----|----------------|--|--------------|-------------|
| 1) | 205/60 R16 96H | Summer tyres on Steel rim with wheel cover | Continental  | 6mm / 6mm   |
| 2) | 205/60 R16 96H | Summer tyres on Steel rim with wheel cover | Continental  | 5mm / 5mm   |

**Replacement**

| Typ | Tyre size      | Type of tyre          | Manufacturer | Tread depth |
|-----|----------------|-----------------------|--------------|-------------|
| E   | 205/60 R16 96H | Summer tyres on Steel | Continental  | 6 mm        |

**Legend: Tread depth information for the left tire is listed first, for the right tire it is listed second on the axle in the direction of travel.**



## Equipment

### Standard equipment

- Storage compartment with 12-volt connection
- Driver's side airbag
- Exterior mirrors, narrow mirror format
- Battery, reinforced
- Rubberized flooring, front
- Diesel particulate filter (DPF)
- Tachometer
- Electronic Safety and Stability Program (ESP)
- Ford Easy Fuel
- Heated windshield
- Transmission: 6-speed transmission
- Glove compartment with lid
- Front air conditioning including semi-electronic recirculation system
- Cargo area lining, side, half-height
- Alternator/Generator
- Fog light
- Radio: Ford Audio System 2
- Wheels: Steel wheels 6.5 J x 16 with 205/60 R 16 tires and wheel trims
- Electro-mechanical power steering
- Front seat belts are height-adjustable
- Seats: Seat package 4
- Start-stop system
- Power outlet: 12-volt connection on the front center console
- Daytime running light
- Partition wall to the cargo area without window
- Door handles, black
- Warning system for unfastened seat belts
- Heat-insulating glazing, lightly tinted
- Auxiliary electric heater (PTC), front
- ABS with EBD
- Exterior mirrors, electrically adjustable and heated
- Exterior mirror housing black
- Hill start assist
- On-board computer including outside temperature display
- Double-leaf rear doors without windows
- Third brake light
- Front electric windows
- FordPass Connect
- Warranty: 2-year Ford new car warranty including Ford Assistance mobility guarantee
- Front interior lighting with delay function
- Paint finish: Solid
- Cargo area floor protection plastic, molded
- Steering column, adjustable in height and reach
- Center console, front
- Emergency brake light
- Wheels: Tire repair kit
- Sliding door at rear, right
- Side protection strips, plastic
- Safety brake assist
- Automatic door locking mechanism (45 sec.)
- Front spoiler lip
- Dust and pollen filter
- Front bumper and rear bumper end caps painted in body color
- Child safety lock on sliding doors
- Lashing eyes
- Electronic immobilizer (EPATS)
- Central locking with remote control



### Extra equipment

- Adaptive cruise control (with intelligent speed limiter - including radar- and camera-based pre-collision assist with pedestrian and cyclist detection, lane keeping assist including lane keeping assist and driver drowsiness detection - including traffic sign recognition system - leather multifunction steering wheel with 4 spokes in aluminum trim)
- Electrically adjustable and heated exterior mirrors with blind spot assist (blind spot assist including cross traffic alert)
- Headlight assistant with day/night sensor including automatically dimming interior mirror (including headlight dimming with switch-off delay, windscreen wipers with rain sensor)
- Seats: Seat Package 42 (Driver's seat, 3-way manually adjustable (forward/backward, height, backrest) - Single passenger seat, 2-way adjustable (forward/backward, backrest) - Height-adjustable headrests - Heated seats for driver and front passenger - Manually adjustable lumbar support in driver's seat - Airbag Package (Front airbag for front passenger, front head/shoulder airbags, side airbags for driver and front passenger) - "Capitol/City" fabric in Ebony (black))
- Active parking assistant with parking and exiting function (front and rear parking pilot system)
- Crosswind Assist and Roll Stability Control (RSC)
- DPF regenerator, manual
- Fog lights with static cornering lights
- Inductive charging station for mobile devices (according to Qi standard, compatibility depends on the device)
- Partition wall to the cargo area with window
- Radio: Ford Audio System 9 (Ford navigation system incl. Ford SYNC 3 with AppLink, 6" touchscreen radio (FM/AM), 2 USB ports, audio remote control on the steering wheel, Bluetooth hands-free system and audio streaming, emergency call assistant, SMS text-to-speech function, SMS sending function, voice control, reversing camera, phase diversity antenna, DAB/DAB+, acoustic and visual route guidance, road map for Europe, TMCpro live traffic, detailed 3D visualization, Michelin travel guide for Europe)
- Rear swing door with heated rear window
- Remote control: 2nd remote control key for central locking (instead of conventional key)
- Spare wheel: Steel wheel
- Tire pressure monitoring system

### Retrofitted equipment

- Third key, rubber floor mats, protective seat covers
- SORTIMO: DED019H0000784 Left 1 without pipe
- SORTIMO: DED019H0000784 Basic package
- SORTIMO: DED019H0000784 Right 2 without workbench

### Brief expert findings

|                      |  |
|----------------------|--|
| Documents submitted  | At the time of the inspection, the vehicle registration certificate Part 2 (title) was available, but the vehicle registration certificate Part 1 (document) was not. (Copy) |
| VIN comparison       | The vehicle identification number (VIN) was read from the vehicle and its conformity with the submitted documents was confirmed by the undersigned during the inspection.    |
| Inspection           | The inspection conditions were sufficient for the assessment of the vehicle.<br>Lifting equipment and/or a pit were available for examining the vehicle.                     |
| Test drive           | No test drive/shunting maneuver was carried out during the inspection of the vehicle.  |
| Engine function test | An engine test run was performed.  |

### Value reducing factors

| No. | Component group      | Description  |
|-----|----------------------|--|
| 1   | Wheel / tyres        | Wheel cover - rear right side - Scratched - Replace                        |
| 2   | Wheel / tyres        | Wheel cover - front right side - Scratched - Replace                       |
| 3   | Boot lid / rear door | Boot lid - Glued / labelled - De-glue / neutralise                         |
| 4   | Front bumper         | Front bumper - Scratch(es) - Smart repair                                  |
| 5   | Equipment            | Vehicle key with remote control (Schlüssel-bart) - Broken / torn - Replace |

### Wear and tear

| No. | Component group | Description   |
|-----|-----------------|---|
| 1   | Vehicle glazing | Rear window (Folie verbaut) - Glued / labelled - No deduction |

The vehicle shows signs of wear and tear commensurate with its age and use.



## Order/Scope of Order

An order was placed to prepare a sales report for the described vehicle. This report includes the following:

- Description of key vehicle information
- Documentation of equipment features  
*(Delivery by third-party service providers)*
- Documentation of damage, defects, missing parts
- Documentation of prior damage, unrepaired prior damage, repainting
- A brief visual or functional inspection of the equipment details, if possible.  
*(Functional testing of driver assistance systems is not included in the scope of services!)*
- a photographic documentation of the vehicle

## Basis for the order

This product is based on the guidelines for vehicle returns and valuations of light commercial vehicles published by Alphabet Fleet Management GmbH. The expert makes the specific findings in each individual case objectively, within the framework of the prescribed standards, based on their own expertise.

The vehicle inspection takes place in a fully assembled, unassembled state.

Damage or defects that can only be detected during disassembly/diagnostic work or through further investigation remain within the realm of prognostic risk. An increased risk exists due to concealed defects caused by fraudulent misrepresentation and which were not identifiable by the expert.

Damage or defects resulting from normal use or wear and tear of the vehicle will be accepted in accordance with the applicable standard.

There was no explicit identification or monetary consideration of the expected features within the product.

Features which, in their nature and extent, slightly exceed normal use but do not constitute unacceptable damage, will be documented and indicated as signs of wear, if applicable.

Damage or defects that, according to the applicable standard, can no longer be attributed to normal use or wear and tear are listed under "Value Reducing Factors" in the product description.

Depending on the product specification, a monetary ID can be provided. If this takes place, the costs can be 100% or pro rata depending on the vehicle's age and mileage.

## Previous damages

No apparent prior damage that had been repaired could be found on the vehicle.



Figure 1: Diagonal front (left)



Figure 2: Diagonal front (right)



Figure 3: Diagonal rear (left)



Figure 4: Diagonal rear (right)

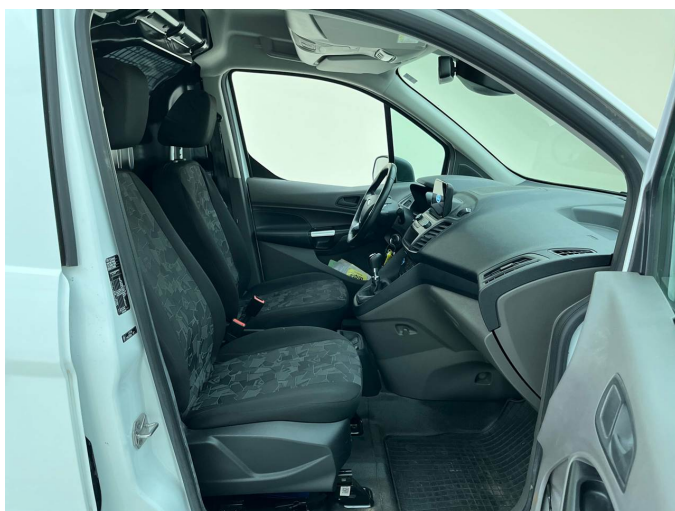


Figure 5: Interior - front



Figure 6: Interior - rear



Figure 7: Instrument cluster



Figure 8: Instrument panel



Figure 9: Interior 360° view



Figure 10: Cargo area



Figure 11: VIN



Figure 12: Mounted tyres

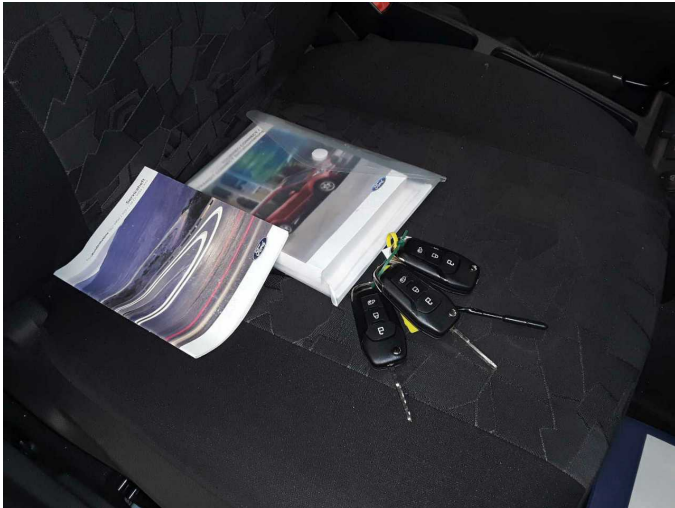


Figure 13: Documents

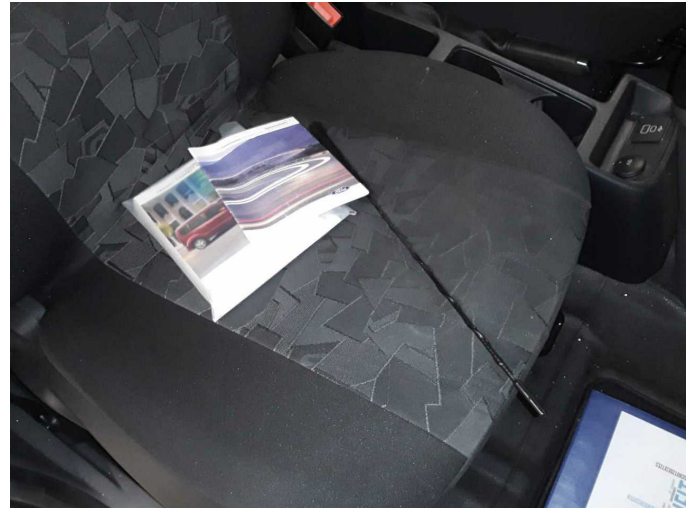


Figure 14: Documents



Figure 15: Documents



Figure 16: Documents

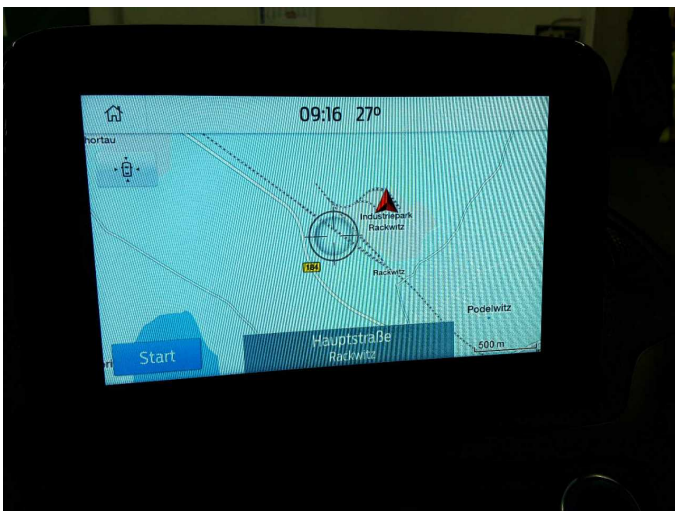


Figure 17: Navigation

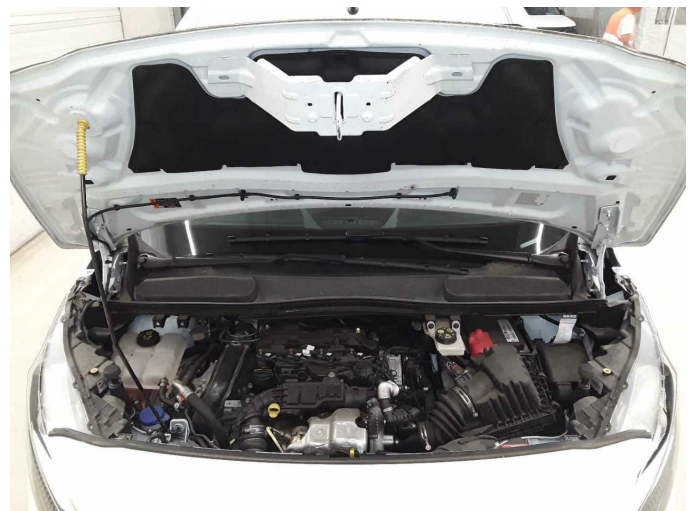


Figure 18: Misc.

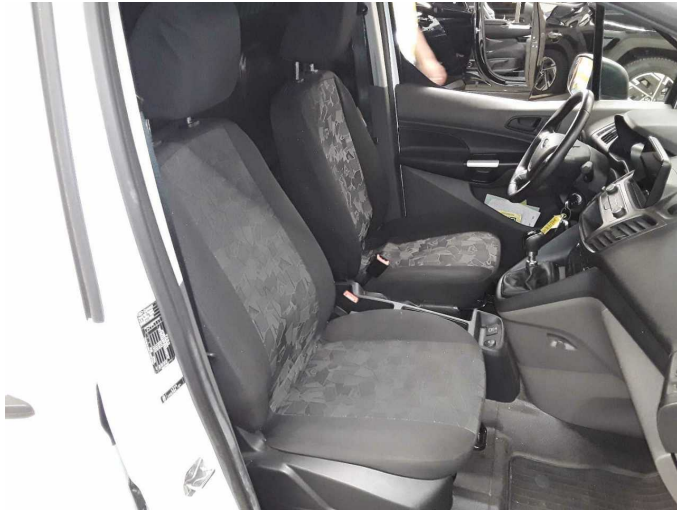


Figure 19: Misc.



Figure 20: Misc.



Figure 21: Misc.



Figure 22: Misc.



Figure 23: Misc.



Figure 24: Misc.



Figure 25: Misc.



Figure 26: Misc.



Figure 27: Misc.

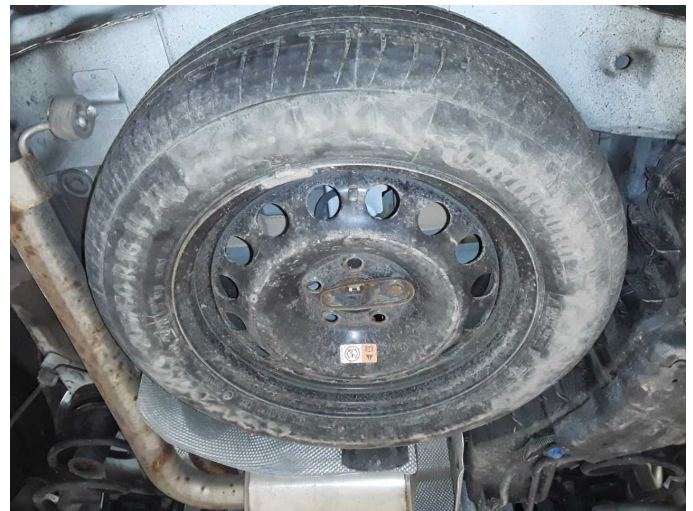


Figure 28: Misc.



**Damage 1:** Wheel / tyres: Wheel cover - rear right side - Scratched - Replace



**Damage 1:** Wheel / tyres: Wheel cover - rear right side - Scratched - Replace



**Damage 2:** Wheel / tyres: Wheel cover - front right side - Scratched - Replace



**Damage 2:** Wheel / tyres: Wheel cover - front right side - Scratched - Replace



**Damage 3:** Boot lid / rear door: Boot lid - Glued / labelled - De-glu / neutralise



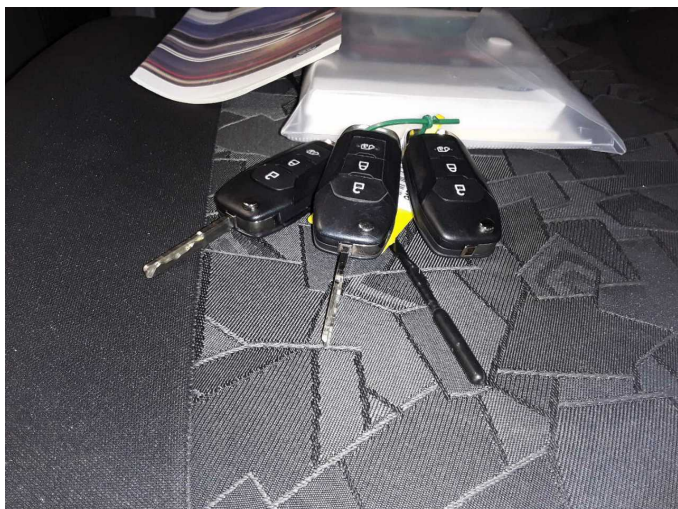
**Damage 4:** Front bumper: Front bumper - Scratch(es) - Smart repair



**Damage 4:** Front bumper: Front bumper - Scratch(es) - Smart repair



**Damage 5:** Equipment: Vehicle key with remote control (Schlüssel-bart) - Broken / torn - Replace



**Damage 5:** Equipment: Vehicle key with remote control (Schlüssel-bart) - Broken / torn - Replace



**Wear and tear 1:** Vehicle glazing: Rear window (Folie verbaut) - Glued / labelled - No deduction



# Wartungshistorie

(gemäß Auftraggeber Informationen)

Fahrgestellnummer: WF0RXXWPGRNJ49478  
Hersteller / Modell: FORD FORD Transit Connect 240 L1 Trend

| Datum      | KM-Stand | Beschreibung   |
|------------|----------|--|
| 13.12.2024 | 26.765   | Bremse Sonstiges; Bremsflüssigkeit; Bremsflüssigkeit ern; Bremsklötze vorne; HU + AU; Motoröl b. Wartung; Ölfilter ern; Regelwartungsdienst; Systemtest/Eigendiagnose; Wartung Sonstiges |